

CONTENTS

1	Introduction	3
1.1	The CARE Database	3
1.2	Notes	4
2	Overview – major issues	5
2.1	EU– Developments	5
2.2	Interesting Details	14
3	Time Series – last 10 years in detail	16
3.1	Time series related to mode of transport	16
3.2	Time series related to age and gender	27
4	Fatalities 2015	42
4.1	People involved	42
4.1.1	Age and gender	42
4.2	Modes of transport	45
4.2.1	Mode of transport by age	45
4.2.2	Mode of transport by type of area	50
4.3	Accident characteristics	53
4.3.1	Various periods of time (month, day of week, hour of day)	53
4.3.2	Type of area/road	73
4.3.3	Type of junction	75
4.3.4	Weather conditions	76
5	Glossary	78
6	List of tables	84
7	List of figures	85

1 Introduction

1.1 The CARE Database

Community database on **A**ccidents on the **R**oads in **E**urope

Road traffic accidents in the Member States of the European Union claim about 26.100 lives and leave more than 1.4 million people injured in 2015. Since 1984, a large number of measures to reduce road accidents have been taken at regional level. Along with these measures, the Council adopted a Decision on 30 November 1993 on the creation of a Community database on road accidents (93/704/EC)¹, the CARE project.

It was commonly agreed that such a database at the Community level would make it possible to identify and quantify road safety problems, evaluate the efficiency of road safety measures, determine the relevance of Community actions and facilitate the exchange of experience in this field. After a pilot phase of about 3 years, the Council endorsed the “Report from the Commission on the progress with the project and its future prospects” (COM(97) 238 final).

CARE is a Community database on road accidents resulting in death or injury (no statistics on damage-only accidents are kept). The major difference between CARE and most other existing international databases is the high level of disaggregation, i.e. CARE is based on detailed data of individual accidents as collected by the Member States. This structure allows for maximum flexibility and potential with regard to analysing the information contained in the system and opens up a whole set of new possibilities in the field of accident analysis.

National data sets are integrated into the CARE database in their original national structure and definitions, with confidential data blanked out. However, transformation rules are implemented in the CARE database in order to increase data compatibility and thus enhance the functioning of the system.

The process of improving “homogenisation” of accident data within CARE is underway. In the meantime, the inherent incompatibility of national accident data remains a source of possible misinterpretation when performing comparative analyses at international level. Therefore, on-line access to the CARE database is currently restricted to expert users. The summary statistical tables and figures contained here provide an overview of road accident data from 2006 to 2015. For some figures other sources than CARE have been used in order to give an overview of EU road accident data.

¹ OJ No 329, 30.12.1993, p. 63.

1.2 Notes

1. Country abbreviations

	Belgium	BE		Italy	IT		Romania	RO
	Bulgaria	BG		Cyprus	CY		Slovenia	SI
	Czech Republic	CZ		Latvia	LV		Slovakia	SK
	Denmark	DK		Lithuania	LT		Finland	FI
	Germany	DE		Luxembourg	LU		Sweden	SE
	Estonia	EE		Hungary	HU		United Kingdom	UK
	Ireland	IE		Malta	MT			
	Greece	EL		Netherlands	NL		Iceland	IS
	Spain	ES		Austria	AT		Liechtenstein	LI
	France	FR		Poland	PL		Norway	NO
	Croatia	HR		Portugal	PT		Switzerland	CH

2. Sources: CARE (Community database on road accidents)

The glossary of definitions of variables used in this Report is in the appendix, the full glossary is available at: http://ec.europa.eu/transport/road_safety/sites/roadsafety/files/cadas_glossary_v3.pdf.

3. Data available in May 2017.

4. Data refer to 2015 and when not available the latest available data are used (2009 data for BG, 2010 data for MT and SK, 2013 data for IE and 2014 data for SE). Totals and related average percentages for EU also include latest available data.

5. This 2017 edition of Annual Accident Report updates the previous versions produced within the EU co-funded research projects SafetyNet and DaCoTA under the name Annual Statistical Report.

6. Disclaimer

This report has been produced by the National Technical University of Athens ([NTUA](#)), the Austrian Road Safety Board ([KFV](#)) and the European Union Road Federation ([ERF](#)) under a contract with the [European Commission](#). Whilst every effort has been made to ensure that the matter presented in this report is relevant, accurate and up-to-date, the Partners cannot accept any liability for any error or omission, or reliance on part or all of the content in another context. Any information and views set out in this report are those of the author(s) and do not necessarily reflect the official opinion of the Commission. The Commission does not guarantee the accuracy of the data included in this study. Neither the Commission nor any person acting on the Commission's behalf may be held responsible for the use that may be made of the information contained therein.

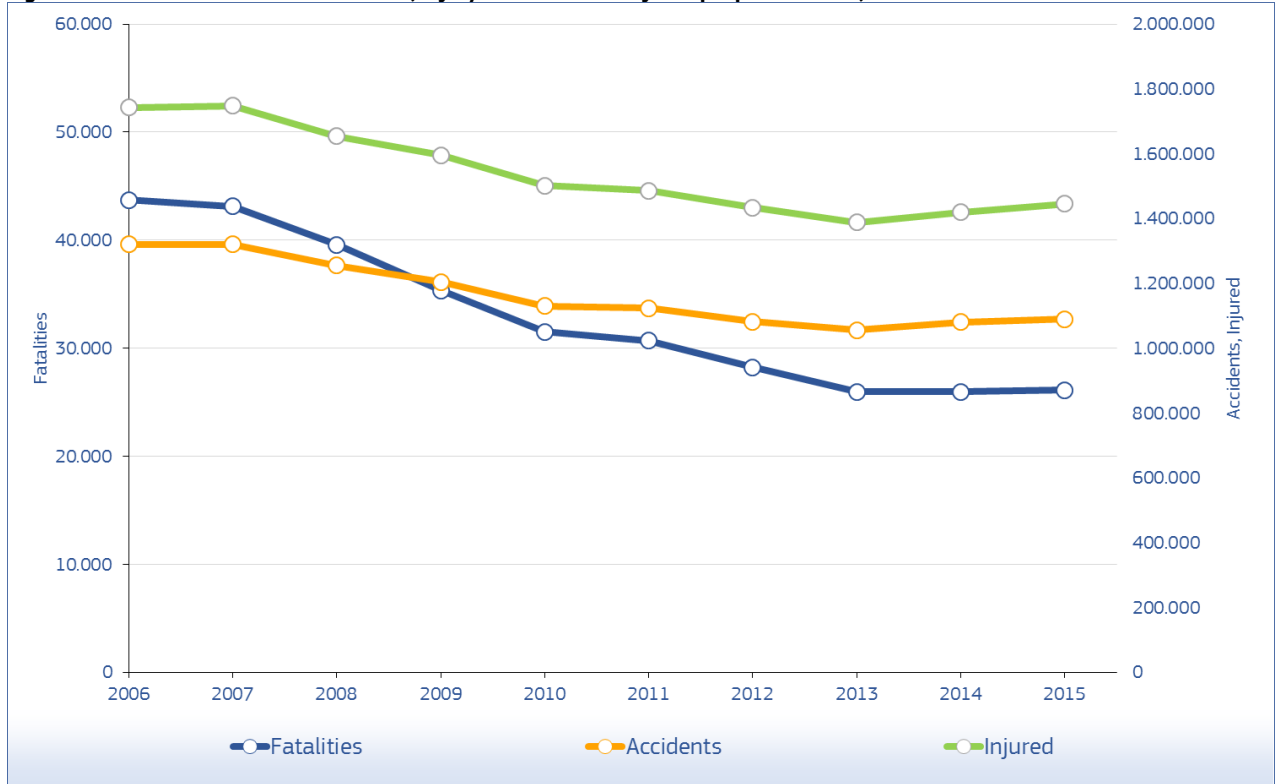
7. Please refer to this Report as follows:

European Commission, Annual Accident Report. European Commission, Directorate General for Transport, June 2017.

2 Overview – major issues

2.1 EU- Developments

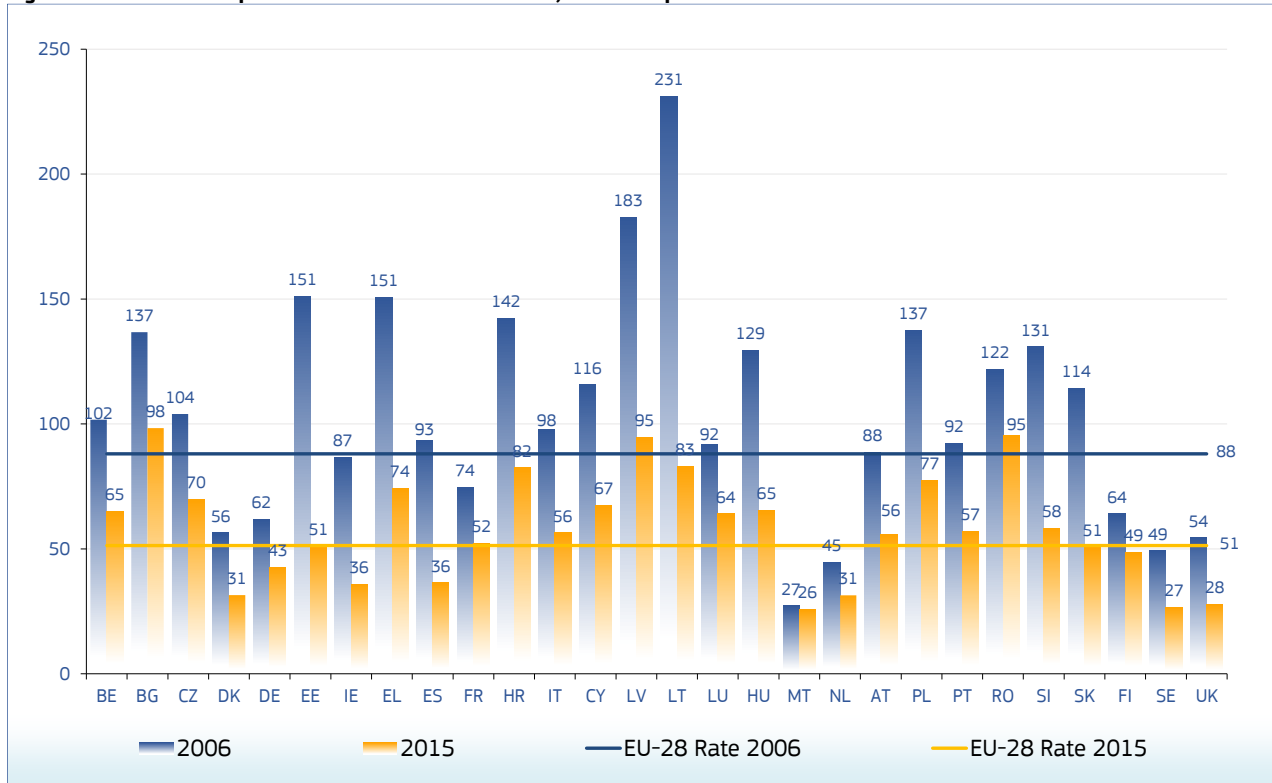
Figure 1: Annual number of fatalities, injury accidents and injured people in the EU, 2006-2015



Source: CARE (EU road accidents database) or national publications
 Last update: May 2017

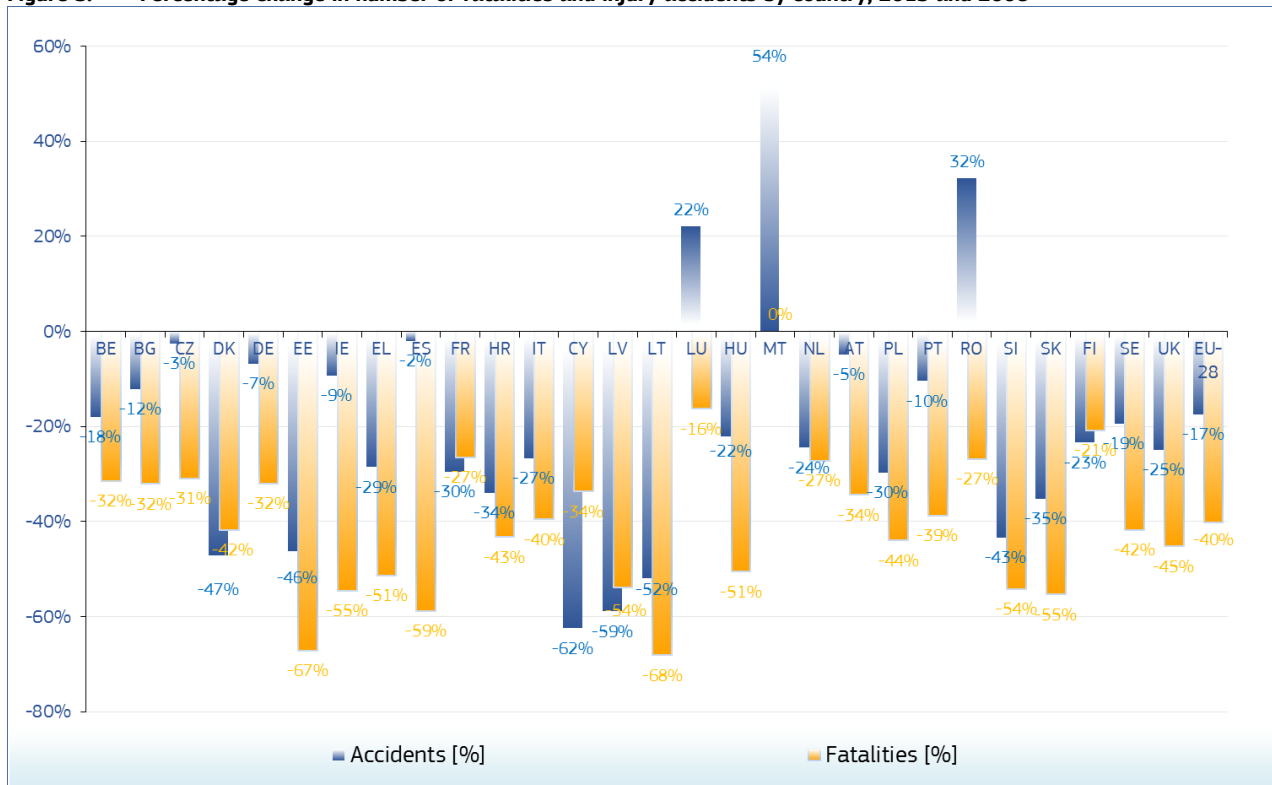
Annual Accident Report 2017

Figure 2: Fatalities per million inhabitants in the EU, 2015 compared to 2006



Source: CARE (EU road accidents database) or national publications
Last update: May 2017

Figure 3: Percentage change in number of fatalities and injury accidents by country, 2015 and 2006



Source: CARE (EU road accidents database) or national publications
Last update: May 2017

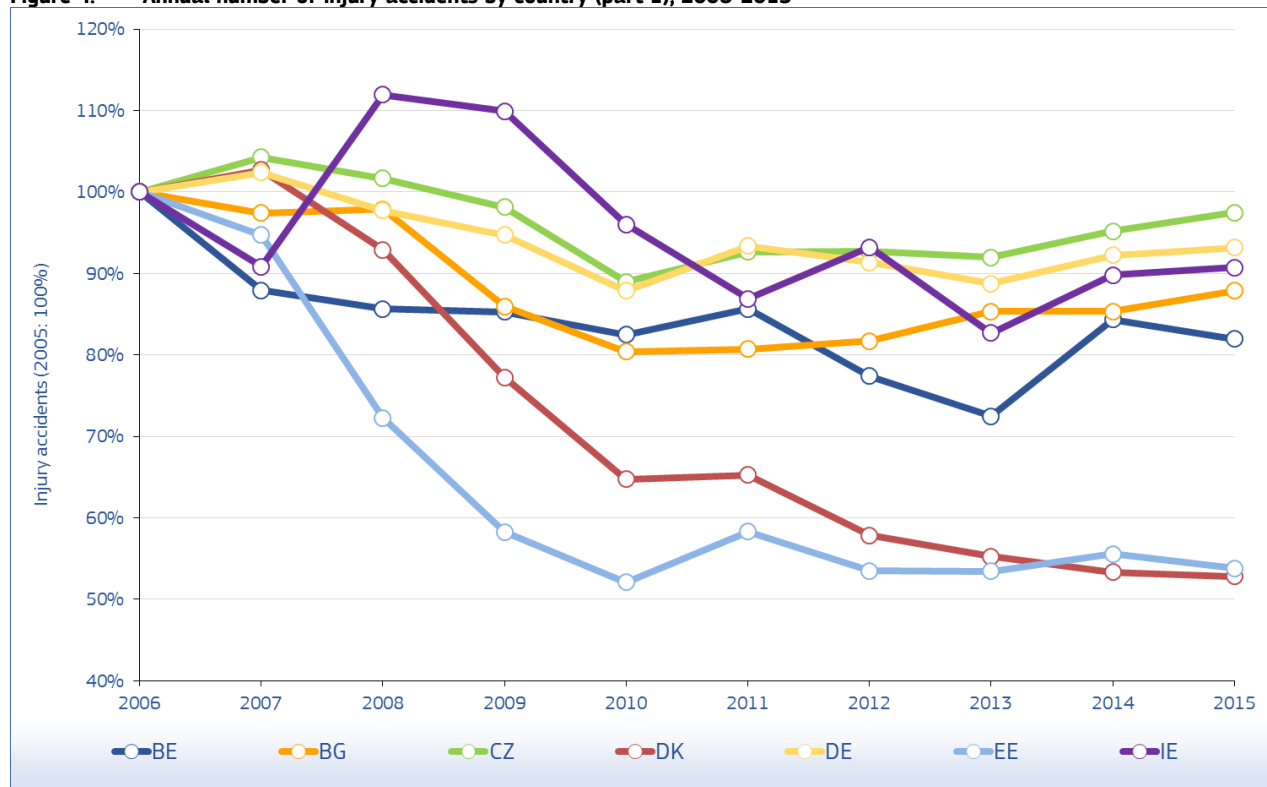
Table 1: Annual number of injury accidents by country, 2006-2015

	2006	2007	2008	2009	2010	2011	2012	2013	2014	2015
BE	49.307	49.171	43.239	42.115	41.944	40.569	42.119	38.057	35.632	41.481
BG	8.224	8.222	8.010	8.047	7.068	6.610	6.638	6.717	6.759	7.018
CZ	25.239	22.115	23.060	22.481	21.706	19.675	20.486	20.503	20.342	21.054
DK	5.413	5.403	5.549	5.020	4.174	3.498	3.525	3.124	2.985	2.881
DE	336.618	327.984	335.845	320.614	310.667	288.297	306.266	299.637	291.105	302.435
EE	2.341	2.585	2.449	1.868	1.506	1.347	1.508	1.383	1.382	1.436
IE	6.533	6.018	5.467	6.736	6.615	5.779	5.230	5.610	6.067	5.405
EL	16.914	16.190	15.499	15.083	14.789	15.032	13.849	12.398	12.109	11.752
ES	91.187	99.779	100.508	93.161	88.251	85.503	83.027	83.115	89.519	91.570
FR	84.525	80.309	81.272	74.487	72.315	67.288	65.024	60.437	56.812	58.191
HR	15.679	16.706	18.033	16.290	15.731	13.274	13.229	11.774	11.228	10.323
IT	240.011	238.124	230.871	218.963	215.430	212.997	205.638	188.228	181.660	177.031
CY	1.594	1.757	1.468	1.392	1.197	1.198	1.058	919	774	758
LV	9.310	8.986	9.865	8.894	3.160	3.193	3.386	3.358	3.489	3.728
LT	6.772	6.588	6.448	4.796	3.827	3.530	3.266	3.392	3.391	3.256
LU	775	805	954	927	869	787	962	1.019	949	908
HU	20.777	20.977	20.634	19.174	17.863	16.308	15.827	15.174	15.691	15.847
MT	848	894	942	764	636	577	348	-	-	-
NL	27.007	24.527	25.819	23.708	19.378	10.778	5.134	4.968	9.522	13.358
AT	40.896	39.884	41.096	39.173	37.925	35.348	35.129	40.831	38.502	37.957
PL	48.100	46.876	49.536	49.054	44.195	38.832	40.069	37.046	35.847	34.970
PT	37.066	35.680	35.311	33.613	35.484	35.426	32.541	29.867	30.339	30.604
RO	19.819	21.905	24.661	29.307	28.612	25.995	26.647	26.928	24.827	25.355
SI	10.509	11.620	11.640	9.165	8.717	7.659	7.257	6.857	6.568	6.168
SK	7.903	7.988	8.483	8.416	8.415	8.119	5.378	5.007	4.729	5.064
FI	7.020	6.740	6.657	6.881	6.414	6.072	6.408	5.725	5.334	5.324
SE	18.094	18.213	18.548	18.462	18.027	16.627	16.274	16.636	14.942	13.091
UK	203.712	194.789	188.105	176.814	169.805	160.080	157.068	151.346	144.480	152.407
EU	1.342.193	1.320.835	1.319.969	1.255.405	1.204.720	1.130.398	1.123.291	1.080.404	1.055.332	1.079.720
Yearly Change		-1,6%	-0,1%	-4,9%	-4,0%	-6,2%	-0,6%	-3,8%	-2,3%	2,3%
IS	671	886	1.131	1.071	878	876	837	732	806	805
LI	435	448	420	402	358	366	327	405	468	0
NO	7.884	7.672	7.973	7.479	6.726	6.229	5.798	5.783	4.957	4.796
CH	21.333	21.151	21.550	20.400	20.171	19.296	18.678	17.847	17.216	17.574

Source: CARE (EU road accidents database) or national publications
Last update: May 2017

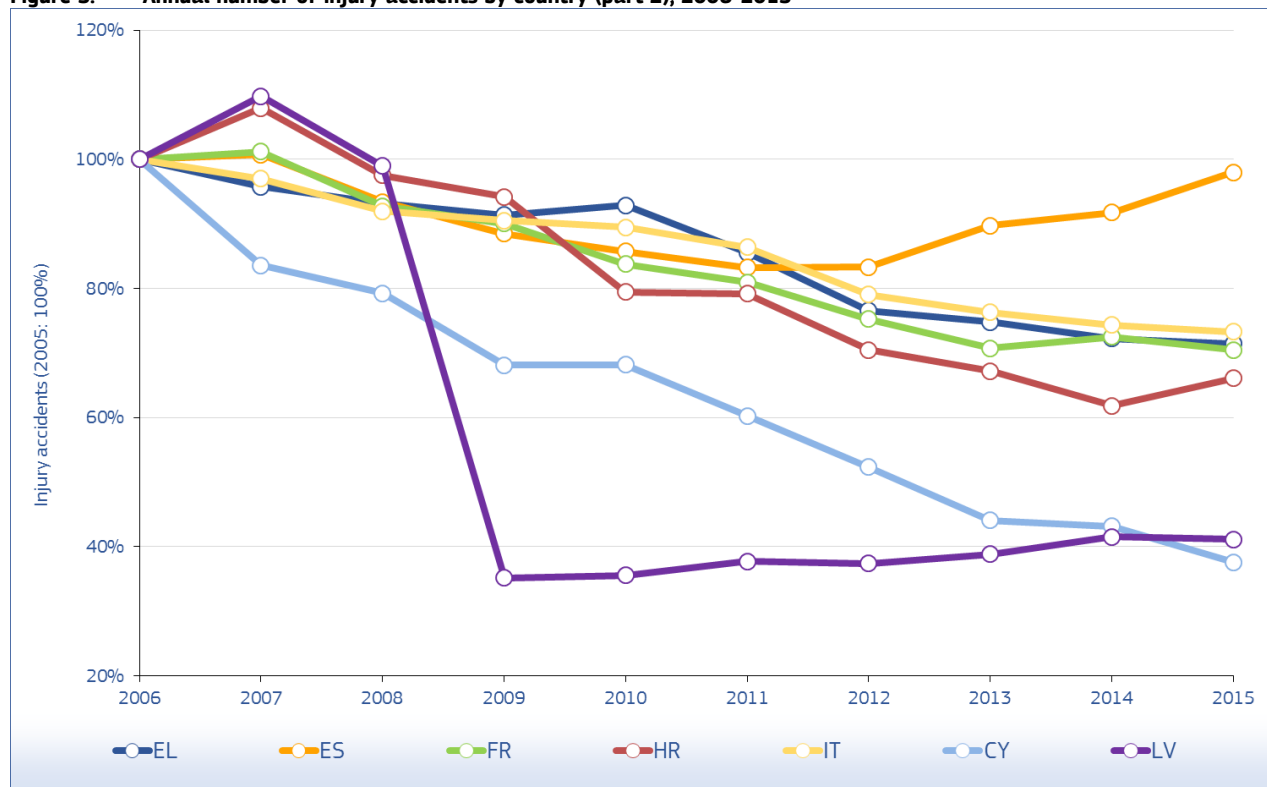
Annual Accident Report 2017

Figure 4: Annual number of injury accidents by country (part 1), 2006-2015



Source: CARE (EU road accidents database) or national publications
 Last update: May 2017

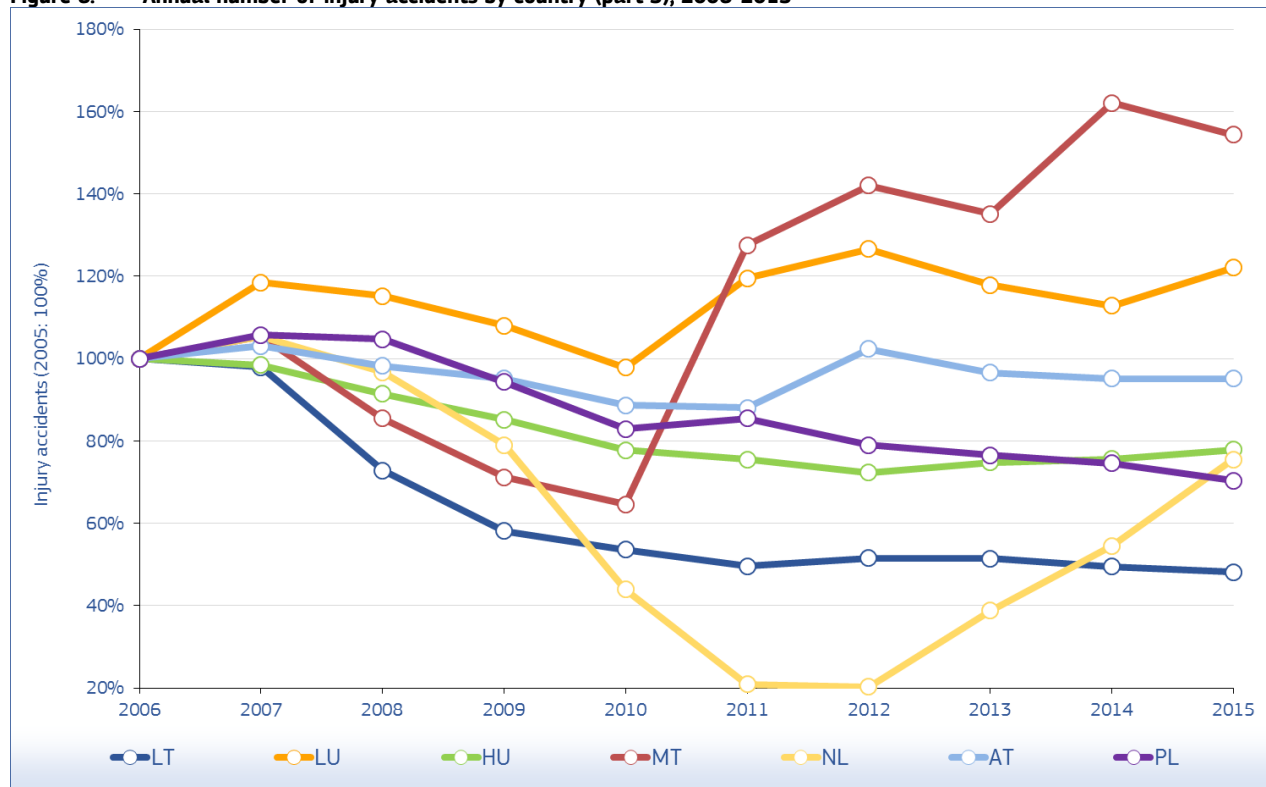
Figure 5: Annual number of injury accidents by country (part 2), 2006-2015



Source: CARE (EU road accidents database) or national publications
 Last update: May 2017

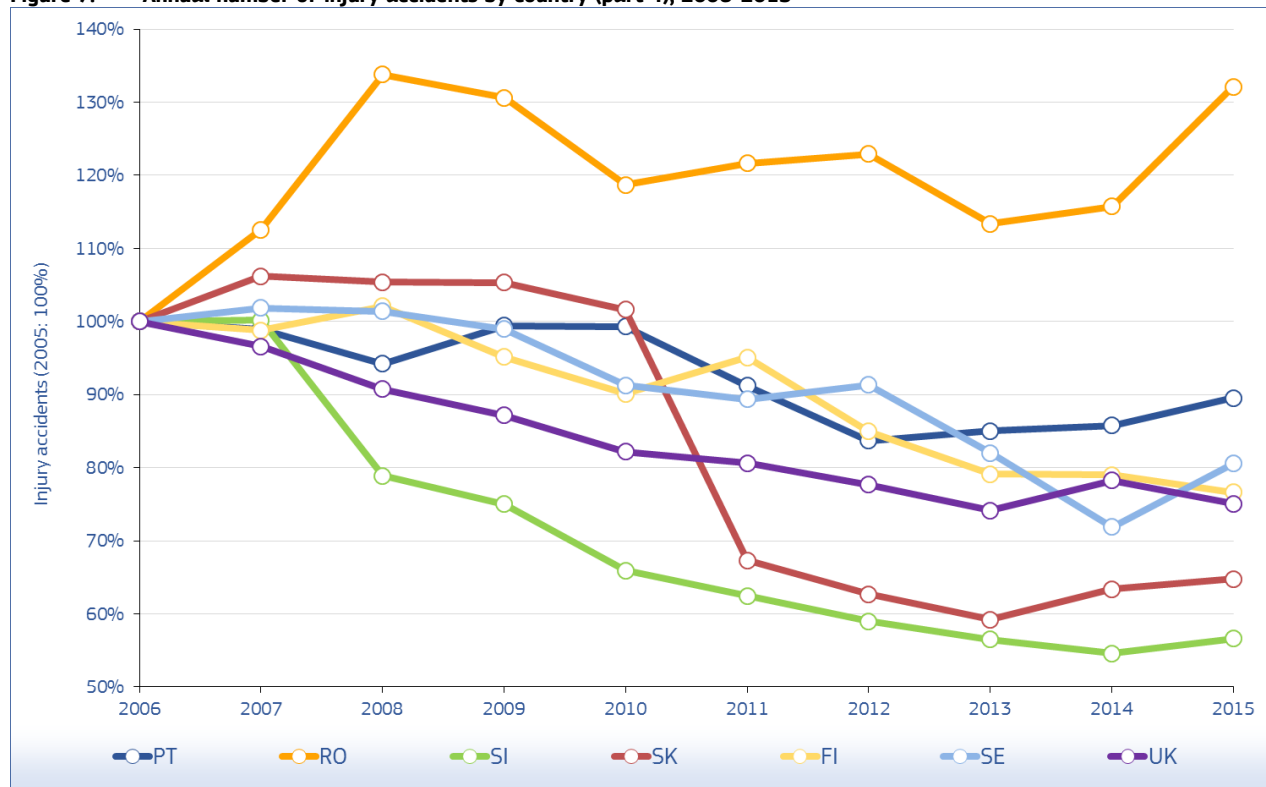
Annual Accident Report 2017

Figure 6: Annual number of injury accidents by country (part 3), 2006-2015



Source: CARE (EU road accidents database) or national publications
 Last update: May 2017

Figure 7: Annual number of injury accidents by country (part 4), 2006-2015



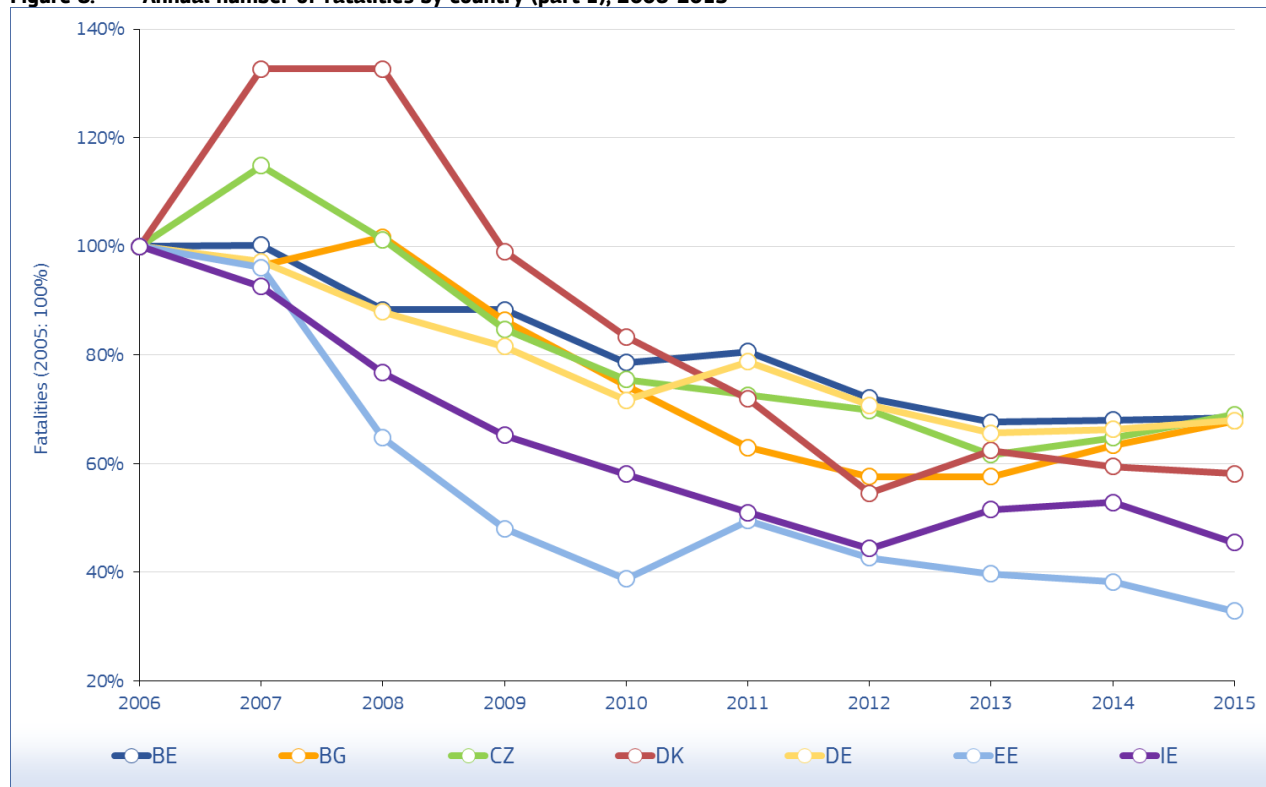
Source: CARE (EU road accidents database) or national publications
 Last update: May 2017

Table 2: Annual number of fatalities by country, 2006-2015

	2006	2007	2008	2009	2010	2011	2012	2013	2014	2015
BE	1.069	1.071	944	944	840	862	770	723	727	732
BG	1.043	1.006	1.061	901	776	657	601	601	661	708
CZ	1.063	1.221	1.076	901	802	773	742	655	688	734
DK	306	406	406	303	255	220	167	191	182	178
DE	5.091	4.949	4.477	4.152	3.648	4.009	3.600	3.339	3.377	3.459
EE	204	196	132	98	79	101	87	81	78	67
IE	365	338	280	238	212	186	162	188	193	166
EL	1.657	1.612	1.553	1.456	1.258	1.141	988	879	795	793
ES	4.104	3.822	3.098	2.714	2.479	2.060	1.902	1.680	1.688	1.689
FR	4.709	4.620	4.275	4.273	3.992	3.963	3.653	3.268	3.384	3.459
HR	614	619	664	548	426	418	393	368	308	348
IT	5.669	5.131	4.725	4.237	4.114	3.860	3.753	3.401	3.381	3.428
CY	86	89	82	71	60	71	51	44	45	57
LV	407	419	316	254	218	179	177	179	212	188
LT	760	740	499	370	299	296	302	256	267	242
LU	43	46	35	48	32	33	34	45	35	36
HU	1.303	1.232	996	822	740	638	606	591	626	644
MT	11	12	9	15	13	16	9	17	10	11
NL	730	709	677	644	537	546	562	476	476	531
AT	730	691	679	633	552	523	531	455	430	479
PL	5.243	5.583	5.437	4.572	3.908	4.189	3.571	3.357	3.202	2.938
PT	969	974	885	840	937	891	718	637	638	593
RO	2.587	2.800	3.065	2.796	2.377	2.018	2.042	1.861	1.818	1.893
SI	262	293	214	171	138	141	130	125	108	120
SK	614	661	606	384	371	325	352	251	295	310
FI	336	380	344	279	272	292	255	258	229	266
SE	445	471	397	358	266	319	285	260	270	259
UK	3.298	3.059	2.645	2.337	1.905	1.960	1.802	1.770	1.854	1.806
EU	43.718	43.150	39.577	35.359	31.506	30.687	28.244	25.955	25.977	26.132
Yearly Change		-1,3%	-8,3%	-10,7%	-10,9%	-2,6%	-8,0%	-8,1%	0,1%	0,6%
IS	31	15	12	17	8	12	9	15	4	16
LI	0	0	1	1	0	2	1	2	-	-
NO	242	233	255	212	208	168	145	187	147	117
CH	370	384	357	349	327	320	339	269	243	253

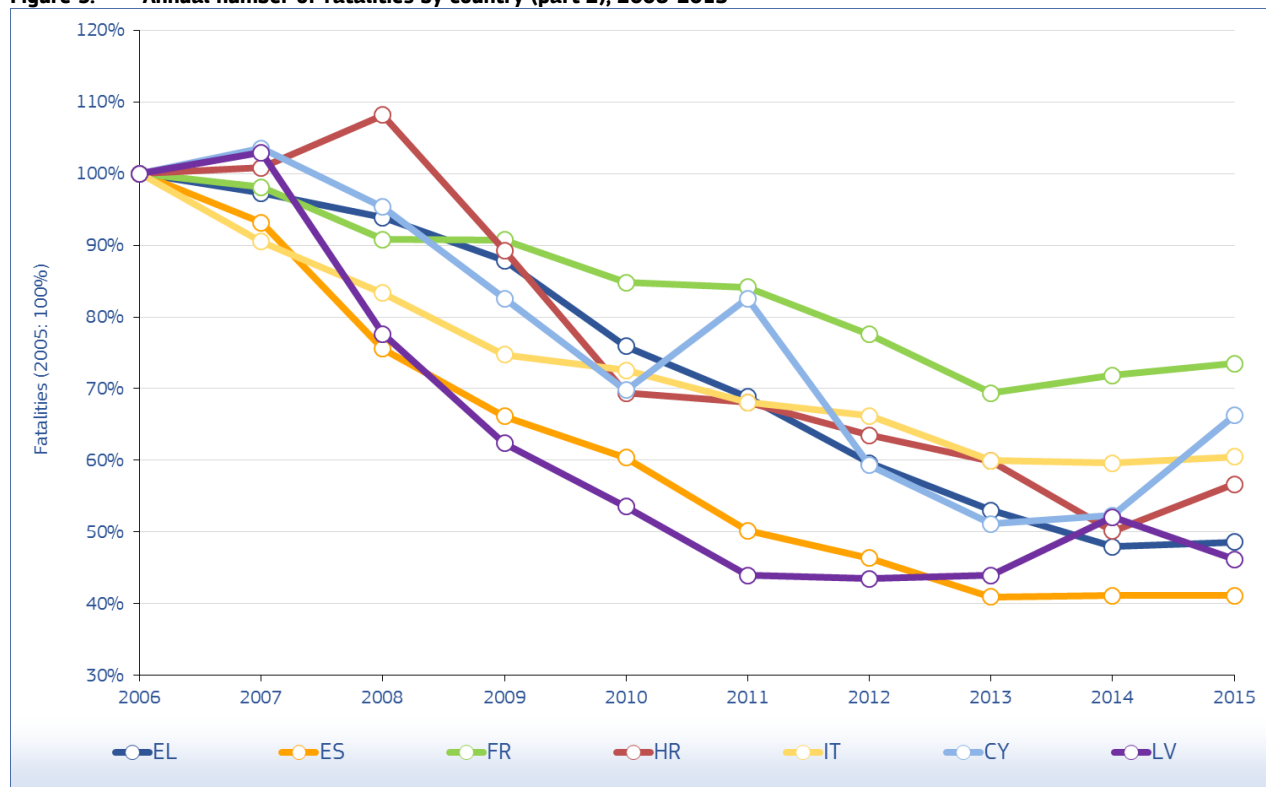
Source: CARE (EU road accidents database) or national publications
Last update: May 2017

Figure 8: Annual number of fatalities by country (part 1), 2006-2015



Source: CARE (EU road accidents database) or national publications
 Last update: May 2017

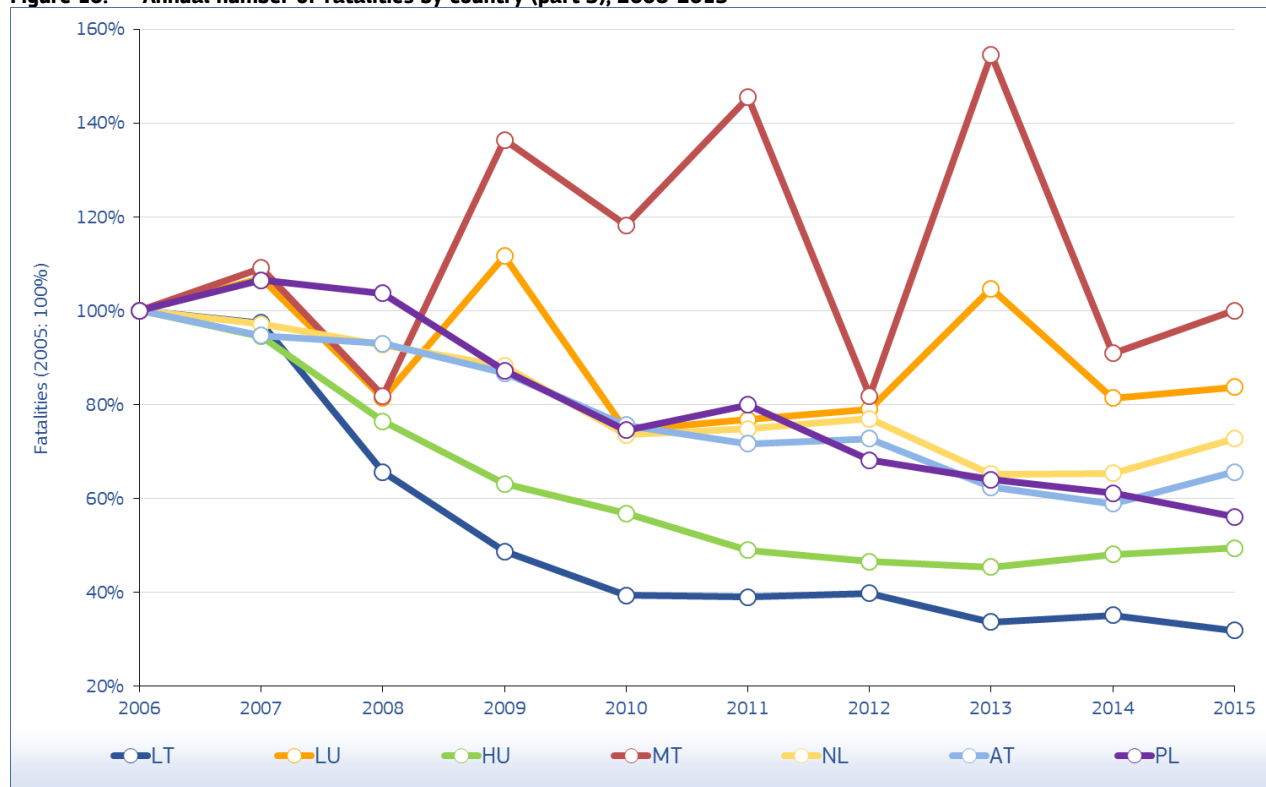
Figure 9: Annual number of fatalities by country (part 2), 2006-2015



Source: CARE (EU road accidents database) or national publications
 Last update: May 2017

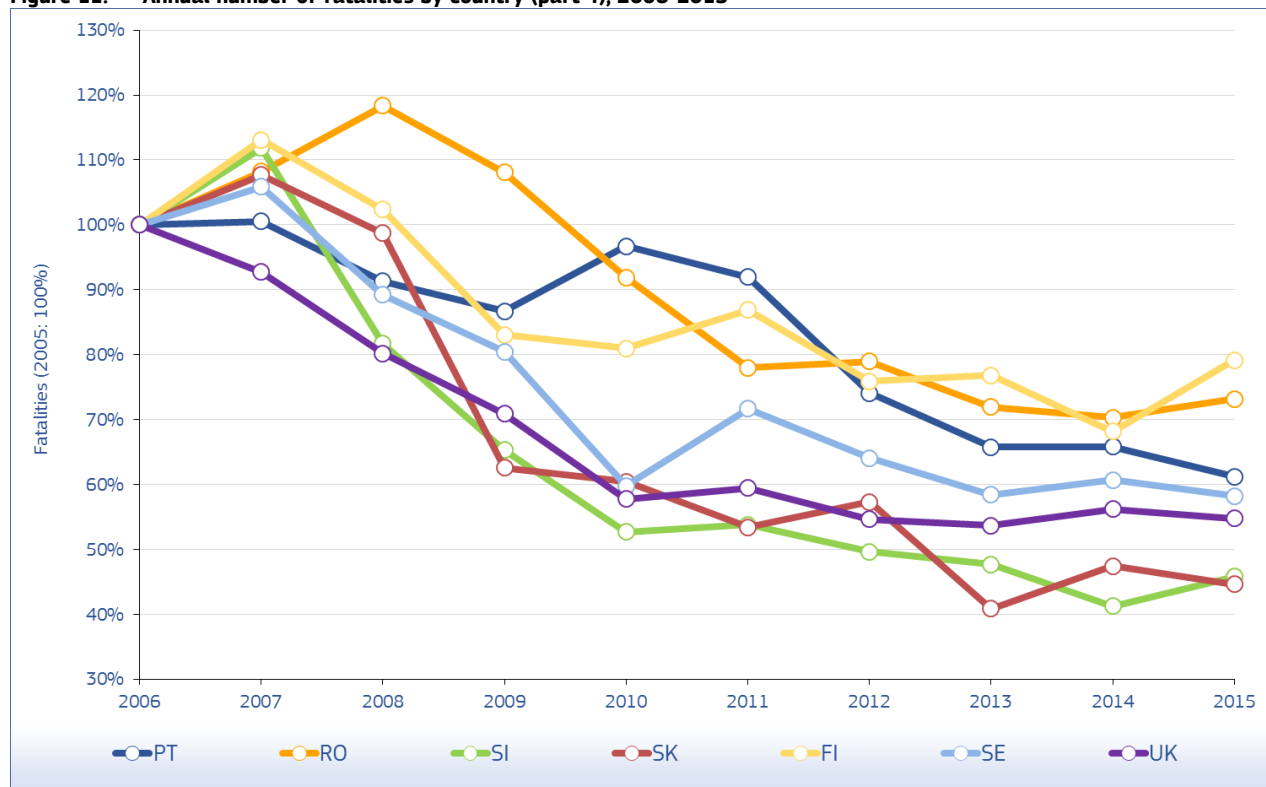
Annual Accident Report 2017

Figure 10: Annual number of fatalities by country (part 3), 2006-2015



Source: CARE (EU road accidents database) or national publications
Last update: May 2017

Figure 11: Annual number of fatalities by country (part 4), 2006-2015



Source: CARE (EU road accidents database) or national publications
Last update: May 2017

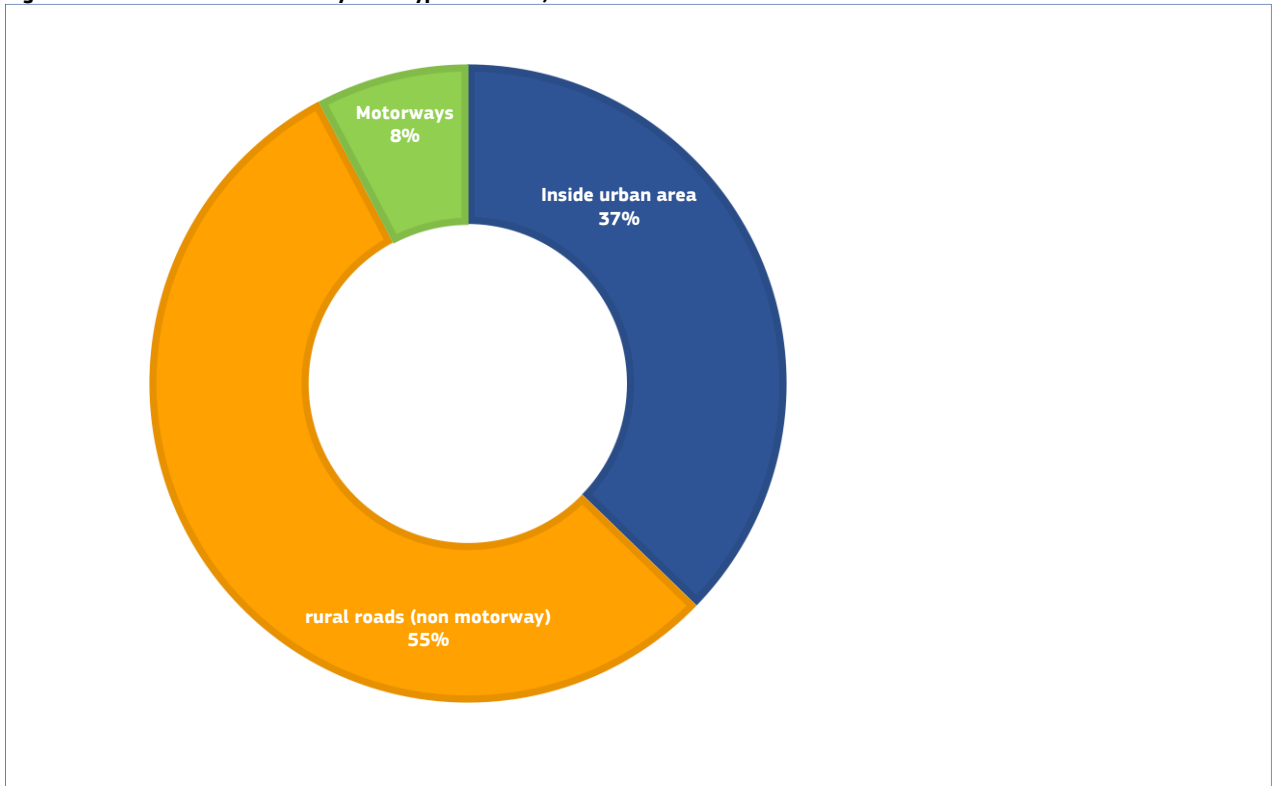
Table 3: Annual number of fatal accidents by country, 2006-2015

	2006	2007	2008	2009	2010	2011	2012	2013	2014	2015
BE	1.001	1.006	869	884	786	799	720	676	685	687
BG	-	-	937	748	-	-	-	-	-	-
CZ	957	1.111	983	846	742	713	687	606	623	668
DK	284	366	378	271	231	208	156	173	168	172
DE	4.717	4.609	4.117	3.867	3.387	3.724	3.375	3.131	3.187	3.277
EE	183	174	114	83	70	93	82	74	72	61
IE	321	309	254	220	185	172	152	179	-	-
EL	1.501	1.442	1.411	1.296	1.142	1.051	908	814	739	741
ES	3.119	2.957	2.384	2.117	1.953	1.816	1.709	1.488	1.512	1.559
FR	4.326	4.265	3.933	3.956	3.706	3.647	3.386	3.020	3.146	3.158
HR	-	548	585	493	402	385	355	328	284	317
IT	5.178	4.718	4.358	3.973	3.871	3.616	3.515	3.161	3.175	3.236
CY	81	88	79	64	56	67	51	41	44	56
LV	366	376	285	227	198	164	161	169	182	172
LT	-	-	-	-	-	-	-	230	243	223
LU	41	43	34	44	29	30	34	41	31	33
HU	1.173	1.107	891	752	649	563	541	540	573	585
MT	11	12	9	11	13	-	-	-	-	-
NL	678	669	630	597	500	520	532	456	455	505
AT	664	644	629	576	515	492	501	435	411	445
PL	4.663	5.028	4.862	4.144	3.504	3.775	3.246	3.062	2.954	2.687
PT	786	765	721	673	857	826	667	585	603	554
RO	2.274	2.462	2.655	2.464	2.103	1.818	1.833	1.657	1.621	1.685
SI	233	263	200	154	127	129	122	116	97	112
SK	547	599	555	336	345	-	-	-	-	-
FI	324	349	321	255	241	273	235	244	208	243
SE	404	426	355	336	249	292	258	247	254	-
UK	3.036	2.819	2.439	2.161	1.782	1.854	1.682	1.663	1.732	1.685
EU	38.035	38.322	35.218	31.778	28.621	28.363	26.244	24.242	24.284	24.400
Yearly Change		0,8%	-8,1%	-9,8%	-9,9%	-0,9%	-7,5%	-7,6%	0,2%	0,5%
IS	28	15	12	15	7	12	9	14	3	16
LI	-	-	-	-	-	-	-	-	-	-
NO	226	209	237	186	190	158	139	170	135	102
CH	594	585	585	536	510	482	449	441	367	356

Source: CARE (EU road accidents database) or national publications
Last update: May 2017

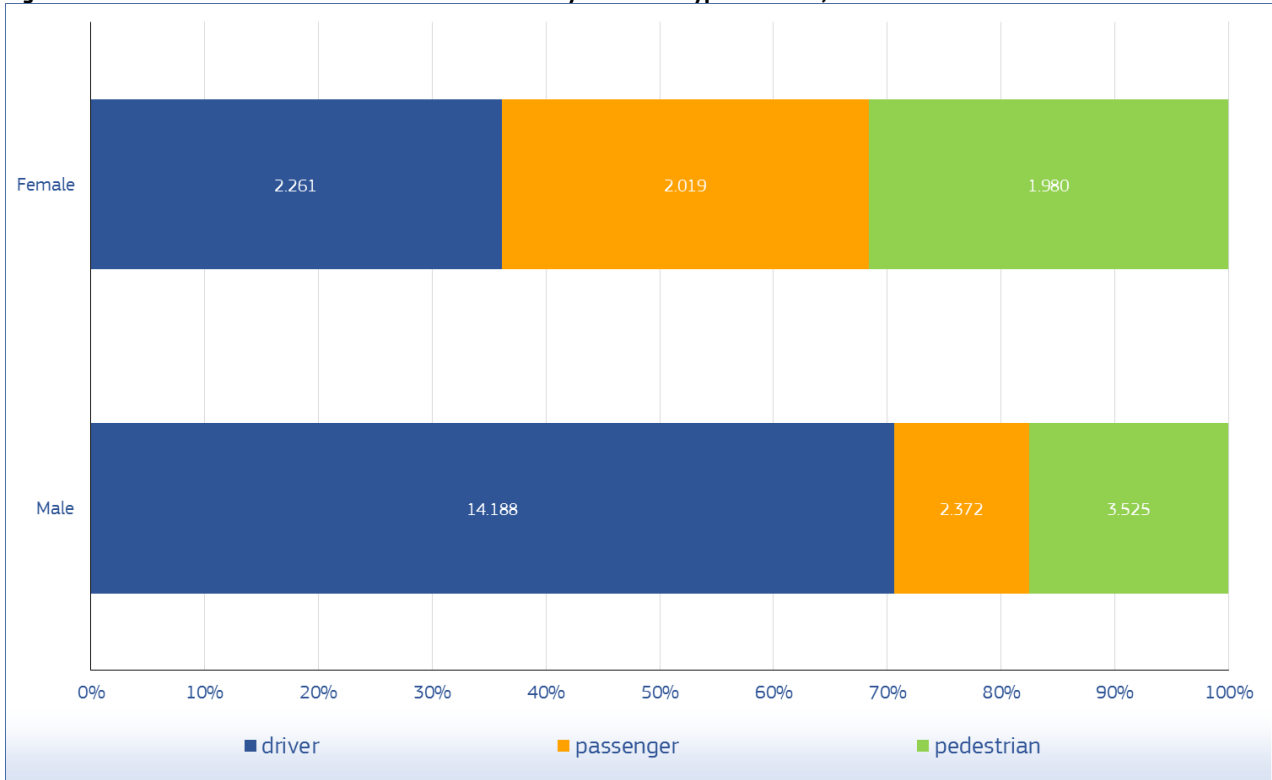
2.2 Interesting Details

Figure 12: Share of fatalities by area type in the EU, 2015



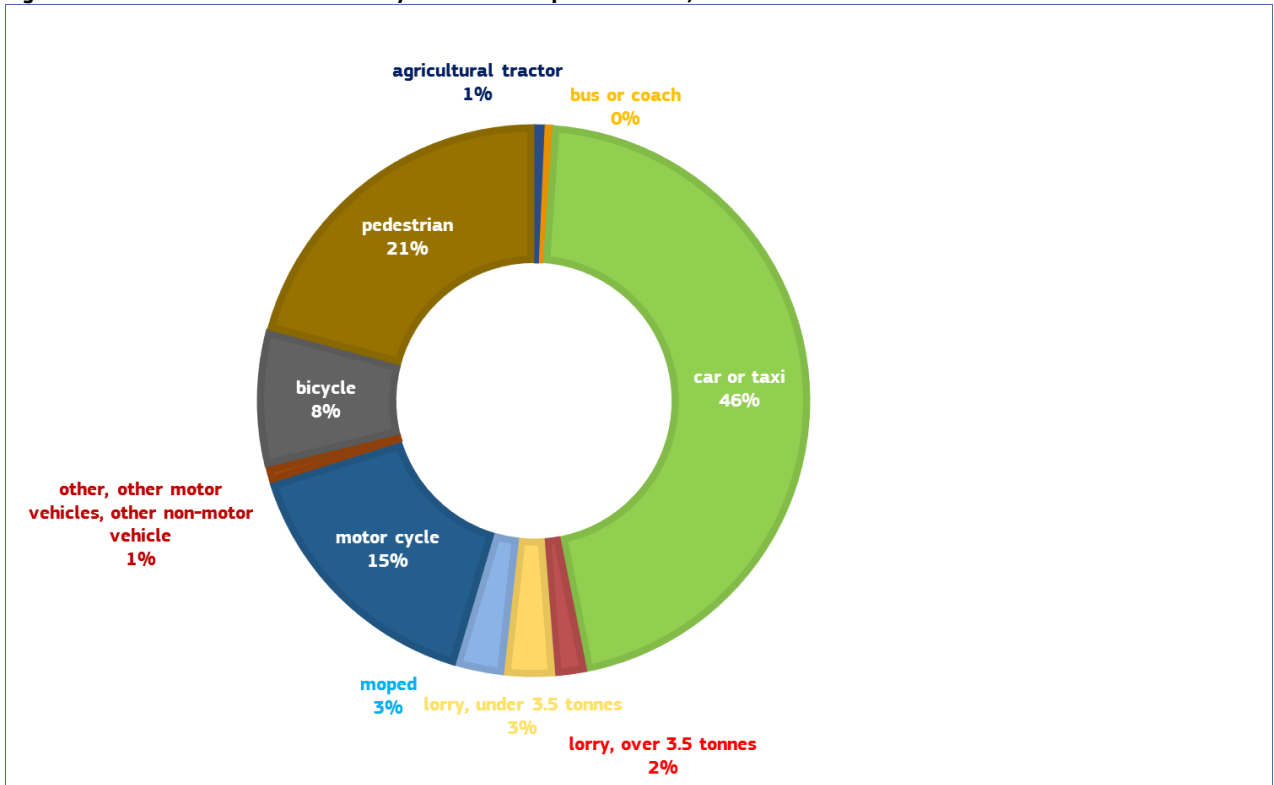
Source: CARE (EU road accidents database) or national publications
 Last update: May 2017

Figure 13: Distribution of male and female fatalities by road user type in the EU, 2015



Source: CARE (EU road accidents database) or national publications
 Last update: May 2017

Figure 14: Distribution of fatalities by mode of transport in the EU, 2015

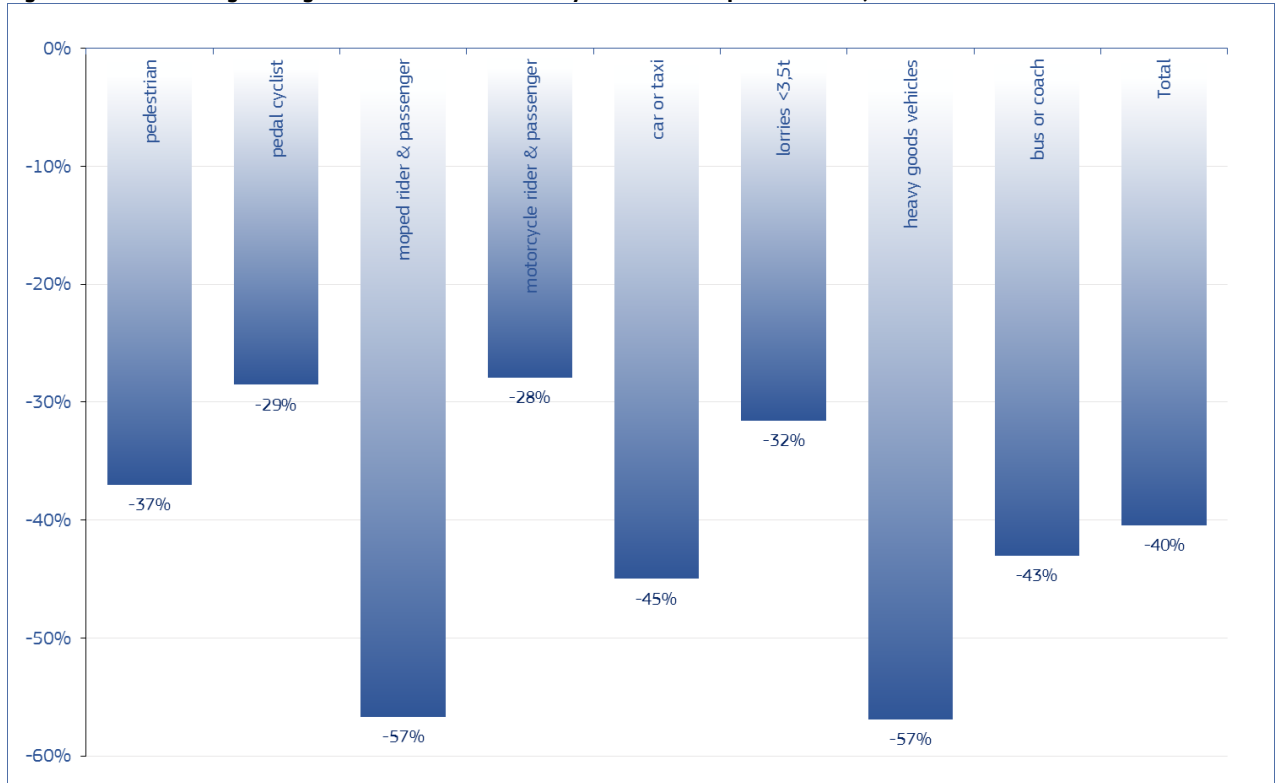


Source: CARE (EU road accidents database) or national publications
Last update: May 2017

3 Time Series – last 10 years in detail

3.1 Time series related to mode of transport

Figure 15: Percentage change in number of fatalities by mode of transport in the EU, 2015 and 2006



Source: CARE (EU road accidents database) or national publications
 Last update: May 2017

Annual Accident Report 2017

Table 4: Annual number of pedestrian fatalities by country, 2006-2015

	2006	2007	2008	2009	2010	2011	2012	2013	2014	2015
BE	122	104	99	101	106	113	104	99	106	92
BG	-	-	278	198	-	-	-	-	-	-
CZ	202	232	238	176	168	176	163	162	130	150
DK	60	68	58	52	44	33	31	34	22	27
DE	711	695	653	591	476	614	527	561	527	545
EE	64	38	41	23	14	26	29	23	26	24
IE	72	81	49	40	44	47	29	31	-	-
EL	267	255	248	202	179	223	170	151	125	128
ES	614	591	502	470	471	380	370	371	336	367
FR	535	561	548	496	485	519	489	465	499	466
HR	-	124	136	103	105	71	72	69	73	61
IT	758	627	646	667	621	589	576	551	578	602
CY	19	17	16	9	13	13	10	8	10	16
LV	153	158	105	82	79	60	62	70	71	63
LT	-	-	-	-	-	-	-	96	109	81
LU	10	7	6	12	1	6	6	5	3	7
HU	296	288	251	186	192	124	156	147	152	149
MT	4	3	1	0	0	-	-	-	-	-
NL	66	86	56	63	62	65	64	51	50	60
AT	110	108	102	101	98	87	81	82	71	84
PL	1.802	1.951	1.882	1.467	1.236	1.408	1.157	1.140	1.116	915
PT	156	156	155	148	195	199	159	144	145	146
RO	1.034	1.113	1.067	1.015	868	747	728	726	697	649
SI	36	32	39	24	26	21	19	20	14	16
SK	214	217	204	113	126	-	-	-	-	-
FI	49	48	53	30	35	41	29	34	36	32
SE	55	58	45	44	31	53	50	42	52	-
UK	697	663	591	524	415	466	429	405	464	427
EU	8.604	8.655	8.165	7.034	6.385	6.502	5.931	5.812	5.768	5.515
Yearly Change		0,6%	-5,7%	-13,9%	-9,2%	1,8%	-8,8%	-2,0%	-0,8%	-4,4%
IS	4	1	0	2	2	4	2	1	0	1
LI	-	-	-	-	-	-	-	-	-	-
NO	36	23	31	26	24	16	22	18	18	12
CH	76	79	59	60	75	69	75	69	43	58

Source: CARE (EU road accidents database) or national publications
Last update: May 2017

Table 5: Annual number of pedal cyclist rider and passenger fatalities by country, 2006-2015

	2006	2007	2008	2009	2010	2011	2012	2013	2014	2015
BE	92	90	86	89	70	70	69	73	76	83
BG	-	-	35	29	-	-	-	-	-	-
CZ	110	116	93	84	80	63	78	74	68	84
DK	31	54	54	25	26	30	22	33	30	26
DE	486	425	456	462	381	399	406	354	396	383
EE	13	13	9	7	0	0	0	0	0	0
IE	9	15	13	7	5	9	8	5	-	-
EL	21	16	22	15	23	13	21	15	19	11
ES	72	90	59	57	67	48	74	70	75	58
FR	181	142	148	162	147	141	164	147	159	149
HR	-	28	47	29	28	28	21	23	19	34
IT	311	352	288	295	265	282	292	251	273	251
CY	2	3	6	2	2	2	1	2	1	1
LV	33	18	15	26	13	15	18	13	16	9
LT	-	-	-	-	-	-	-	18	19	22
LU	0	0	0	2	1	2	0	0	0	0
HU	153	158	109	103	92	85	84	68	98	83
MT	0	0	0	0	0	-	-	-	-	-
NL	179	147	145	138	119	144	145	112	118	107
AT	48	37	62	39	32	42	52	52	45	39
PL	509	498	433	371	280	314	300	306	286	300
PT	40	34	42	29	33	45	32	29	35	25
RO	198	179	179	157	182	140	154	161	151	162
SI	15	17	17	18	17	16	12	16	13	14
SK	52	61	46	22	27	-	-	-	-	-
FI	29	22	18	20	26	19	19	20	27	30
SE	26	33	30	20	21	21	28	14	33	-
UK	147	138	117	104	111	109	120	113	116	100
EU	2.838	2.739	2.547	2.329	2.095	2.111	2.194	2.025	2.134	2.065
Yearly Change		-3,5%	-7,0%	-8,6%	-10,0%	0,8%	3,9%	-7,7%	5,4%	-3,2%
IS	0	0	0	0	0	0	0	0	0	1
LI	-	-	-	-	-	-	-	-	-	-
NO	8	7	10	9	5	12	12	10	12	5
CH	35	30	27	54	34	39	36	21	34	39

Source: CARE (EU road accidents database) or national publications

Last update: May 2017

Annual Accident Report 2017

Table 6: Annual number of moped rider and passenger fatalities by country, 2006-2015

	2006	2007	2008	2009	2010	2011	2012	2013	2014	2015
BE	36	26	32	25	22	20	15	13	17	19
BG	-	-	9	5	-	-	-	-	-	-
CZ	3	3	2	9	7	7	7	6	8	6
DK	24	48	30	15	11	14	14	11	13	19
DE	107	100	110	99	74	70	93	73	87	62
EE	2	4	6	3	0	-	1	0	0	0
IE	-	-	-	-	-	-	-	-	-	-
EL	57	43	41	28	36	34	35	25	20	32
ES	303	233	181	156	99	73	67	56	54	56
FR	317	324	291	299	248	220	179	159	165	155
HR	-	20	27	15	15	10	16	14	11	14
IT	346	358	292	212	206	165	127	125	112	105
CY	5	8	8	4	3	3	3	0	4	2
LV	6	4	4	1	4	5	3	3	6	6
LT	-	-	-	-	-	-	-	4	1	3
LU	0	1	0	0	0	0	0	0	0	0
HU	42	31	26	23	19	31	25	24	17	27
MT	-	-	-	-	-	-	-	-	-	-
NL	63	60	51	47	32	36	40	41	32	35
AT	39	24	25	30	18	18	19	15	16	8
PL	57	59	87	68	83	87	82	62	71	65
PT	97	71	71	58	77	71	57	51	43	42
RO	45	81	150	122	114	87	99	39	30	34
SI	12	12	8	3	7	2	3	4	2	1
SK	-	-	-	-	-	-	-	-	-	-
FI	13	11	13	11	9	10	7	5	3	2
SE	15	14	11	11	8	11	8	3	8	-
UK	29	18	21	16	10	10	12	4	6	8
EU	1.651	1.565	1.500	1.264	1.111	993	921	742	731	714
Yearly Change		-5,2%	-4,2%	-15,7%	-12,1%	-10,6%	-7,3%	-19,4%	-1,5%	-2,3%
IS	0	0	0	0	0	1	0	0	0	0
LI	-	-	-	-	-	-	-	-	-	-
NO	3	7	5	2	0	4	4	3	2	1
CH	11	7	9	8	4	4	3	8	1	3

Source: CARE (EU road accidents database) or national publications
Last update: May 2017

Annual Accident Report 2017

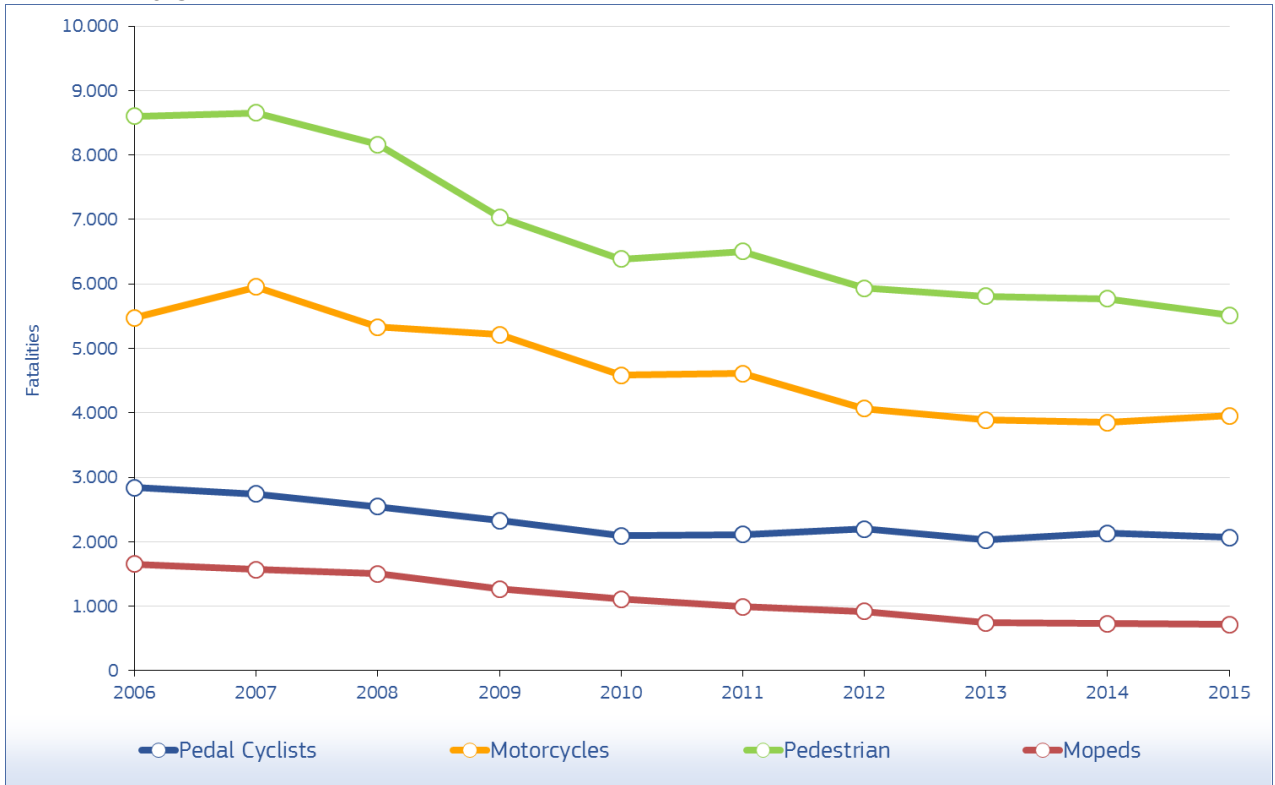
Table 7: Annual number of motorcycle rider and passenger fatalities by country, 2006-2015

	2006	2007	2008	2009	2010	2011	2012	2013	2014	2015
BE	130	139	108	137	102	127	87	102	85	100
BG	-	-	67	48	-	-	-	-	-	-
CZ	113	136	121	85	92	77	86	66	88	91
DK	21	36	40	27	22	23	10	15	18	19
DE	793	807	656	650	635	708	586	568	587	639
EE	5	10	1	2	0	0	0	0	0	0
IE	29	33	29	25	17	18	19	26	-	-
EL	440	420	394	405	367	305	282	271	278	237
ES	488	640	484	437	386	348	304	302	287	329
FR	789	853	817	908	734	786	692	658	649	614
HR	-	96	100	81	51	76	62	49	44	58
IT	1.127	1.182	1.085	1.037	950	923	847	728	704	773
CY	20	16	16	19	18	13	11	15	9	13
LV	10	10	14	10	17	6	7	10	10	7
LT	-	-	-	-	-	-	-	15	13	13
LU	8	5	9	7	1	3	5	8	8	6
HU	89	112	91	73	49	52	39	58	58	50
MT	2	4	3	2	3	-	-	-	-	-
NL	57	64	67	68	60	50	53	29	51	43
AT	95	96	91	87	68	67	68	87	76	83
PL	164	215	262	290	259	292	261	253	237	208
PT	137	145	116	115	126	116	104	78	91	73
RO	35	73	90	74	59	69	62	52	45	55
SI	42	41	40	28	17	25	18	17	15	25
SK	37	54	39	34	27	-	-	-	-	-
FI	26	32	36	27	18	29	21	24	17	20
SE	55	60	51	47	37	46	31	40	31	-
UK	583	596	488	472	403	359	320	337	347	361
EU	5.473	5.957	5.330	5.210	4.581	4.611	4.068	3.886	3.852	3.952
Yearly Change		8,8%	-10,5%	-2,3%	-12,1%	0,6%	-11,8%	-4,5%	-0,9%	2,6%
IS	3	3	1	2	1	0	0	1	0	1
LI	-	-	-	-	-	-	-	-	-	-
NO	34	33	32	27	26	13	17	21	20	20
CH	69	82	83	78	68	68	74	55	53	66

Source: CARE (EU road accidents database) or national publications
Last update: May 2017

Annual Accident Report 2017

Figure 16: Annual number of fatalities by mode of transport (drivers and passengers, vulnerable modes) in the EU, 2006-2015



Source: CARE (EU road accidents database) or national publications
 Last update: May 2017

Table 8: Annual number of car and taxi driver and passenger fatalities by country, 2006-2015

	2006	2007	2008	2009	2010	2011	2012	2013	2014	2015
BE	589	550	479	464	443	457	383	340	379	361
BG	-	-	623	570	-	-	-	-	-	-
CZ	567	661	573	497	403	404	368	308	347	365
DK	138	168	196	164	135	106	81	79	89	74
DE	2.683	2.625	2.368	2.110	1.840	1.986	1.791	1.588	1.579	1.624
EE	106	122	69	54	44	56	42	41	33	35
IE	226	171	160	146	129	95	89	107	-	-
EL	722	771	708	680	545	474	383	347	289	314
ES	2.096	1.824	1.494	1.260	1.194	977	871	716	722	693
FR	2.627	2.466	2.205	2.162	2.117	2.062	1.881	1.615	1.664	1.796
HR	-	309	303	284	205	215	186	195	141	164
IT	2.781	2.320	2.115	1.793	1.832	1.673	1.695	1.491	1.497	1.476
CY	32	37	26	24	19	31	18	16	15	24
LV	182	203	167	116	91	78	72	71	91	85
LT	-	-	-	-	-	-	-	108	118	115
LU	23	27	20	26	27	21	22	30	24	16
HU	630	555	448	386	330	268	253	254	256	304
MT	5	4	4	12	9	-	-	-	-	-
NL	323	299	299	288	219	209	218	180	171	214
AT	384	378	367	325	291	289	282	194	191	241
PL	2.392	2.582	2.540	2.179	1.853	1.897	1.615	1.448	1.346	1.332
PT	375	417	358	301	367	331	255	214	223	214
RO	992	1.096	1.324	1.168	973	780	798	721	724	787
SI	96	126	82	59	44	46	53	40	41	38
SK	282	293	292	182	171	-	-	-	-	-
FI	203	241	202	165	159	172	147	152	121	156
SE	261	279	234	219	151	159	142	144	122	-
UK	1.687	1.489	1.312	1.123	859	911	829	815	835	798
EU	21.442	20.744	19.076	16.865	15.128	14.555	13.332	11.964	11.875	12.205
Yearly Change		-3,3%	-8,0%	-11,6%	-10,3%	-3,8%	-8,4%	-10,3%	-0,7%	2,8%
IS	20	11	10	9	4	7	6	11	3	12
LI	-	-	-	-	-	-	-	-	-	-
NO	141	138	151	127	127	102	73	105	72	67
CH	156	162	156	136	129	119	104	103	97	75

Source: CARE (EU road accidents database) or national publications
Last update: May 2017

Annual Accident Report 2017

Table 9: Annual number of heavy goods vehicles >3,5t fatalities by country, 2006-2015

	2006	2007	2008	2009	2010	2011	2012	2013	2014	2015
BE	16	25	25	20	13	15	17	13	14	16
BG	-	-	28	33	-	-	-	-	-	-
CZ	22	21	18	20	27	23	25	19	23	9
DK	2	4	2	3	2	1	0	1	1	2
DE	113	131	91	79	87	88	154	148	72	84
EE	6	3	3	6	1	0	1	2	3	0
IE	2	7	4	4	2	0	2	2	-	-
EL	23	14	19	7	14	10	11	7	12	11
ES	132	90	85	69	71	73	50	43	48	59
FR	87	68	76	54	65	67	56	57	56	56
HR	-	17	21	17	4	2	2	2	4	6
IT	251	203	219	173	53	50	46	43	46	44
CY	0	0	0	0	0	-	1	2	0	0
LV	13	12	3	6	0	2	4	3	5	5
LT	-	-	-	-	-	-	-	6	4	3
LU	2	4	0	0	1	0	0	2	0	1
HU	28	15	22	12	11	10	15	13	14	11
MT	0	0	1	0	0	-	-	-	-	-
NL	9	7	10	4	4	2	7	7	6	9
AT	15	11	3	9	7	6	4	6	9	8
PL	227	198	175	136	142	138	104	90	92	74
PT	18	25	17	29	12	14	16	18	8	10
RO	26	25	26	14	13	25	21	18	17	15
SI	2	4	0	0	1	1	0	1	1	1
SK	20	22	18	17	19	-	-	-	-	-
FI	7	7	5	6	9	5	10	6	4	4
SE	7	6	5	3	5	4	2	5	5	-
UK	41	54	24	15	30	29	30	22	14	33
EU	1.121	1.008	906	741	632	623	636	588	512	520
Yearly Change		-10,1%	-10,1%	-18,2%	-14,8%	-1,4%	2,2%	-7,6%	-12,9%	1,5%
IS	0	0	1	1	1	0	0	0	0	0
LI	-	-	-	-	-	-	-	-	-	-
NO	8	5	9	9	8	8	2	11	7	4
CH	1	4	4	2	2	1	1	3	2	3

Source: CARE (EU road accidents database) or national publications
Last update: May 2017

Annual Accident Report 2017

Table 10: Annual number of lorries <3,5t fatalities by country, 2006-2015

	2006	2007	2008	2009	2010	2011	2012	2013	2014	2015
BE	34	49	40	43	35	29	29	34	27	37
BG	-	-	-	-	-	-	-	-	-	-
CZ	31	45	27	25	18	15	7	15	16	15
DK	24	24	22	16	14	10	6	17	9	9
DE	122	84	92	85	75	86	-	-	71	62
EE	0	0	0	0	-	-	-	-	-	-
IE	16	25	16	13	8	17	10	12	-	-
EL	82	56	62	75	62	51	51	38	35	44
ES	262	234	189	170	116	99	98	69	111	93
FR	120	131	134	144	146	134	145	132	142	120
HR	-	-	-	-	5	10	15	2	5	5
IT	-	-	-	-	141	117	118	102	109	118
CY	4	4	8	12	5	4	4	1	4	0
LV	-	-	2	5	0	2	4	5	6	3
LT	-	-	-	-	-	-	-	1	2	1
LU	-	-	-	-	-	1	1	0	0	6
HU	36	47	33	28	24	30	20	17	25	17
MT	0	0	0	0	0	-	-	-	-	-
NL	21	35	31	24	22	18	16	15	7	15
AT	16	15	19	13	10	5	15	15	10	12
PL	-	-	-	-	-	-	-	-	-	-
PT	98	70	88	68	88	76	48	61	49	46
RO	124	105	114	87	73	64	72	61	67	77
SI	2	3	3	6	2	1	5	5	0	0
SK	3	2	2	1	1	-	-	-	-	-
FI	3	12	9	10	9	9	11	9	10	13
SE	9	9	11	7	7	10	16	5	8	-
UK	55	63	47	40	37	35	34	39	34	34
EU	1.212	1.162	1.097	1.021	900	825	813	742	760	748
Yearly Change		-4,1%	-5,7%	-6,9%	-11,8%	-8,4%	-1,5%	-8,7%	2,5%	-1,6%
IS	2	0	0	1	0	0	1	1	1	0
LI	-	-	-	-	-	-	-	-	-	-
NO	11	10	7	5	9	5	9	9	1	4
CH	8	4	5	3	6	8	6	3	3	1

Source: CARE (EU road accidents database) or national publications
Last update: May 2017

Annual Accident Report 2017

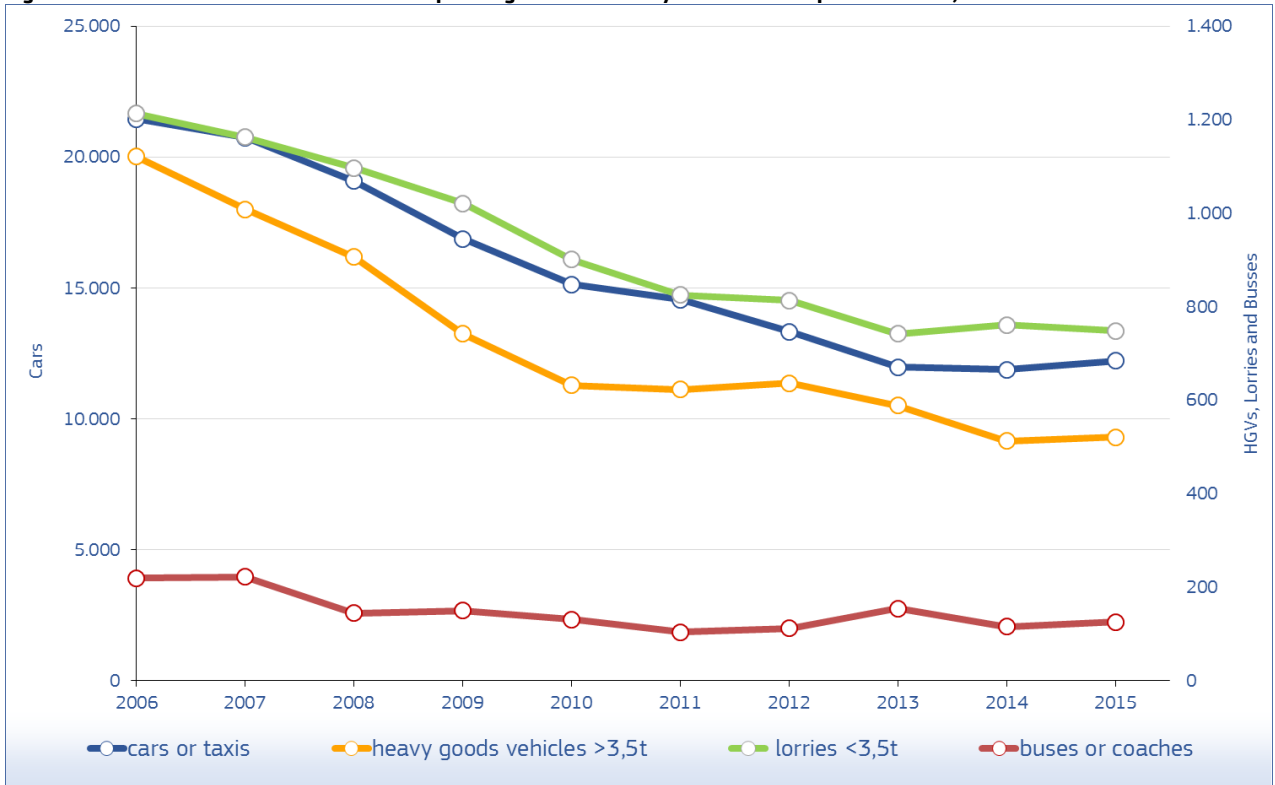
Table 11: Annual number of buses or coaches fatalities by country, 2006-2015

	2006	2007	2008	2009	2010	2011	2012	2013	2014	2015
BE	0	4	2	1	1	2	9	5	4	4
BG	-	-	5	5	-	-	-	-	-	-
CZ	10	2	0	3	1	4	2	2	3	1
DK	3	3	0	0	0	0	1	0	0	0
DE	12	24	10	11	32	10	3	11	13	5
EE	1	0	0	2	4	1	2	2	8	1
IE	3	1	0	1	1	0	1	0	-	-
EL	4	0	4	0	2	4	8	2	2	3
ES	37	15	28	21	5	4	3	11	26	2
FR	8	35	20	5	4	0	7	7	9	43
HR	-	6	17	0	0	0	8	1	0	1
IT	24	18	11	2	9	3	7	48	5	6
CY	2	0	0	0	0	0	0	0	0	0
LV	1	3	1	2	5	2	3	1	1	2
LT	-	-	-	-	-	-	-	1	0	1
LU	0	0	0	0	0	0	0	0	0	0
HU	14	14	3	3	12	30	3	6	1	1
MT	0	0	0	0	0	-	-	-	-	-
NL	1	1	3	0	1	0	1	0	1	1
AT	8	4	2	2	8	0	2	0	1	0
PL	15	17	11	19	14	12	18	18	12	14
PT	1	15	1	6	0	1	2	11	2	8
RO	19	26	6	36	10	9	10	8	9	18
SI	0	0	0	1	0	0	0	0	0	0
SK	4	8	4	12	0	-	-	-	-	-
FI	2	0	0	1	0	2	1	1	0	0
SE	10	6	1	0	2	2	2	1	2	-
UK	28	14	14	16	14	12	12	12	11	7
EU	219	222	144	149	131	104	111	153	115	125
Yearly Change		1,3%	-35,0%	3,7%	-12,6%	-20,7%	7,4%	37,8%	-25,0%	8,6%
IS	1	0	0	0	0	0	0	0	0	0
LI	-	-	-	-	-	-	-	-	-	-
NO	0	5	1	1	4	4	2	5	7	1
CH	2	0	4	0	4	3	32	0	2	1

Source: CARE (EU road accidents database) or national publications

Last update: May 2017

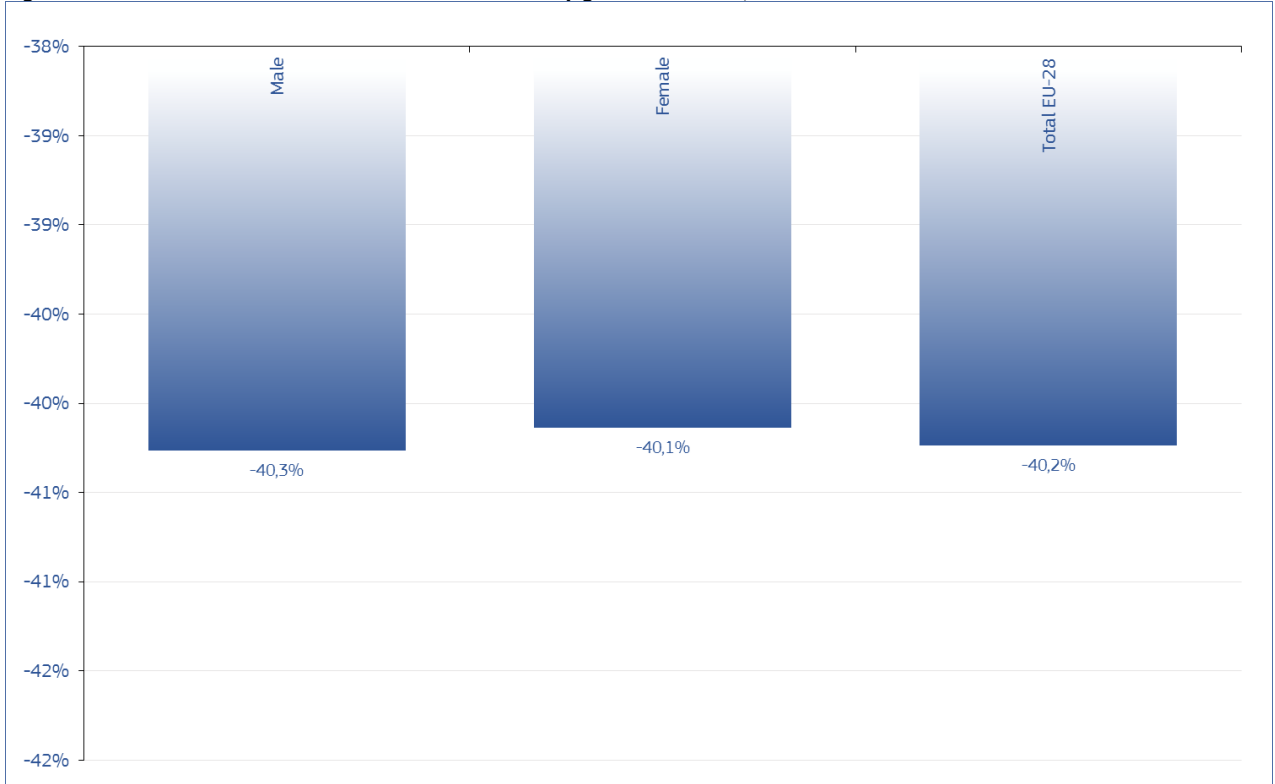
Figure 17: Annual number of drivers and passengers fatalities by mode of transport in the EU, 2006-2015



Source: CARE (EU road accidents database) or national publications
 Last update: May 2017

3.2 Time series related to age and gender

Figure 18: Increase/decrease of number of fatalities by gender in the EU, 2015 and 2006



Source: CARE (EU road accidents database) or national publications
Last update: May 2017

Annual Accident Report 2017

Table 12: Annual number of fatalities by age group by country, 2006-2007

	2006						2007					
	0-14	15-17	18-24	25-49	50-64	65+	0-14	15-17	18-24	25-49	50-64	65+
BE	32	21	195	482	141	193	30	27	215	464	159	170
BG	-	-	-	-	-	-	-	-	-	-	-	-
CZ	32	18	183	432	215	173	25	29	190	523	230	201
DK	13	19	65	91	46	72	20	18	58	145	69	95
DE	136	173	1.011	1.824	791	1.154	111	176	971	1.799	736	1.153
EE	6	5	35	73	53	32	6	8	41	70	27	41
IE	15	18	95	133	36	66	15	14	76	123	45	58
EL	36	40	305	725	197	327	42	43	280	685	207	330
ES	109	131	601	1.952	591	671	99	135	550	1.817	566	604
FR	120	183	1.037	1.739	644	921	150	166	984	1.789	627	896
HR	-	-	-	-	-	-	26	17	135	247	83	110
IT	110	186	825	2.290	802	1.220	95	190	723	2.187	681	1.105
CY	1	3	25	34	5	18	4	6	24	27	12	16
LV	14	11	59	165	74	61	11	15	44	169	90	73
LT	-	-	-	-	-	-	-	-	-	-	-	-
LU	0	0	8	24	5	3	2	2	8	22	4	7
HU	42	24	134	565	307	216	37	30	139	541	264	209
MT	0	1	3	5	1	1	0	0	4	5	0	3
NL	37	33	112	233	105	209	36	32	134	223	103	181
AT	23	35	129	257	130	156	13	32	135	254	112	145
PL	151	150	895	1.959	1.054	888	156	181	953	2.112	1.140	945
PT	22	10	125	404	178	215	27	11	148	385	171	225
RO	145	55	293	1.035	555	504	117	52	402	1.040	569	617
SI	9	10	54	114	42	33	6	6	64	126	40	51
SK	13	8	100	263	131	95	28	6	87	274	129	97
FI	5	21	67	104	68	71	14	18	75	118	76	79
SE	16	24	75	142	93	95	10	22	86	148	100	105
UK	147	207	706	1.234	423	572	96	192	639	1.142	407	575
EU	1.307	1.441	7.501	17.040	7.007	8.327	1.223	1.466	7.394	16.950	6.884	8.342
Yearly Change							-6,8%	1,7%	-1,4%	-0,5%	-1,8%	0,2%
IS	1	3	7	11	5	4	1	0	2	7	2	3
NO	9	14	39	76	39	65	10	10	33	89	40	51
CH	16	18	62	117	56	101	14	16	61	105	71	117

Source: CARE (EU road accidents database) or national publications

Last update: May 2017

Annual Accident Report 2017

Table 13: Annual number of fatalities by age group by country, 2008-2009

	2008						2009					
	0-14	15-17	18-24	25-49	50-64	65+	0-14	15-17	18-24	25-49	50-64	65+
BE	35	28	177	411	139	149	16	21	147	355	150	163
BG	40	34	187	420	181	199	30	33	157	368	155	158
CZ	19	14	193	437	209	186	16	13	133	405	166	167
DK	19	14	69	146	61	97	10	17	53	121	41	61
DE	102	174	887	1.515	727	1.066	90	133	796	1.351	678	1.104
EE	3	4	28	40	28	29	4	2	21	39	13	18
IE	18	20	75	91	24	47	10	9	64	96	31	26
EL	35	41	246	658	221	329	43	37	242	617	211	275
ES	83	95	469	1.399	465	544	61	70	357	1.273	412	507
FR	114	136	956	1.624	622	823	122	189	901	1.653	612	796
HR	20	16	130	261	132	105	24	18	102	187	101	116
IT	85	163	634	1.937	660	1.099	71	121	579	1.596	669	1.111
CY	1	5	17	35	10	14	4	2	19	29	3	14
LV	12	12	48	126	63	46	7	4	31	115	48	35
LT	-	-	-	-	-	-	-	-	-	-	-	-
LU	0	0	8	16	5	4	6	0	10	12	11	9
HU	24	32	103	407	237	179	22	16	81	353	184	166
MT	0	0	2	5	0	2	1	0	2	5	2	5
NL	23	32	107	228	113	174	23	26	126	191	91	187
AT	12	26	134	220	115	172	15	29	99	229	102	159
PL	146	185	948	1.982	1.163	962	128	120	833	1.668	970	810
PT	23	11	113	363	174	197	23	19	109	331	150	205
RO	137	58	439	1.182	678	571	125	58	416	1.000	597	593
SI	4	10	38	87	41	34	2	4	30	61	35	39
SK	23	9	92	198	111	72	9	5	53	122	80	51
FI	8	26	50	111	56	93	6	23	51	84	46	69
SE	6	13	64	142	70	102	9	25	60	100	72	92
UK	110	160	542	989	344	499	69	126	467	913	330	432
EU	1.109	1.322	6.797	15.125	6.705	7.847	953	1.125	5.981	13.368	6.017	7.420
Yearly Change	-10,3%	-10,9%	-8,8%	-12,1%	-2,7%	-6,3%	-16,3%	-17,5%	-13,6%	-13,1%	-11,4%	-5,7%
IS	0	0	3	2	3	4	0	1	1	8	4	3
NO	8	11	59	84	44	48	8	17	46	71	33	37
CH	10	12	44	123	65	103	21	5	68	97	68	90

Source: CARE (EU road accidents database) or national publications
Last update: May 2017

Annual Accident Report 2017

Table 14: Annual number of fatalities by age group by country, 2010-2011

	2010						2011					
	0-14	15-17	18-24	25-49	50-64	65+	0-14	15-17	18-24	25-49	50-64	65+
BE	23	21	171	343	124	153	35	14	143	353	127	183
BG	-	-	-	-	-	-	-	-	-	-	-	-
CZ	17	17	125	329	142	172	12	16	129	309	160	141
DK	9	8	42	81	48	67	9	8	35	63	42	63
DE	104	101	690	1.218	624	910	86	116	737	1.302	723	1.044
EE	1	2	10	24	25	17	4	0	15	40	23	19
IE	6	7	56	83	26	30	7	10	39	76	17	37
EL	30	39	186	521	190	268	22	28	163	458	185	260
ES	79	49	311	1.087	407	527	43	29	234	880	368	486
FR	130	161	831	1.513	592	765	128	144	813	1.517	602	759
HR	12	9	58	170	80	97	14	14	81	174	61	74
IT	70	121	547	1.573	645	1.064	61	105	496	1.417	667	1.038
CY	1	2	12	27	7	11	1	1	14	36	7	12
LV	9	2	35	75	53	36	5	4	20	70	32	43
LT	-	-	-	-	-	-	-	-	-	-	-	-
LU	0	0	10	13	6	3	1	2	8	12	7	3
HU	20	10	73	304	184	137	12	8	73	227	172	146
MT	1	0	4	7	1	0	-	-	-	-	-	-
NL	16	20	90	171	86	154	18	19	86	152	83	188
AT	10	27	102	178	95	140	13	24	76	164	96	150
PL	112	122	677	1.419	871	674	102	106	718	1.580	950	703
PT	18	7	88	378	168	277	19	11	105	303	189	264
RO	95	50	307	849	577	494	83	36	251	723	468	453
SI	2	4	19	54	29	30	6	4	17	62	29	23
SK	11	7	59	126	67	48	-	-	-	-	-	-
FI	7	13	48	93	47	64	8	14	51	92	45	82
SE	9	5	47	82	52	71	10	9	57	96	56	91
UK	42	93	362	701	330	377	52	77	341	746	305	439
EU	871	934	5.158	11.882	5.687	6.796	800	843	4.963	11.448	5.693	6.959
Yearly Change	-9,4%	-20,5%	-15,9%	-12,5%	-5,8%	-9,2%	-8,9%	-10,7%	-3,9%	-3,8%	0,1%	2,3%
IS	0	0	3	1	2	2	2	4	0	2	2	2
NO	3	7	42	75	39	42	7	6	27	57	34	37
CH	8	12	36	105	65	101	10	9	41	80	62	118

Source: CARE (EU road accidents database) or national publications
Last update: May 2017

Annual Accident Report 2017

Table 15: Annual number of fatalities by age group by country, 2012-2013

	2012						2013					
	0-14	15-17	18-24	25-49	50-64	65+	0-14	15-17	18-24	25-49	50-64	65+
BE	16	18	128	279	151	177	18	8	119	318	108	151
BG	-	-	-	-	-	-	-	-	-	-	-	-
CZ	15	17	96	311	144	157	11	10	96	242	136	155
DK	7	6	31	51	28	44	13	6	25	56	38	53
DE	73	113	611	1.144	665	994	58	89	493	1.065	633	999
EE	0	1	17	26	25	18	3	2	8	32	17	19
IE	2	7	35	61	20	36	6	4	36	74	22	46
EL	21	21	143	389	147	248	17	27	112	319	149	234
ES	53	32	175	783	337	506	46	20	145	643	329	479
FR	115	131	753	1.345	564	745	97	102	636	1.213	532	688
HR	8	10	48	150	98	79	10	10	58	132	83	75
IT	52	85	423	1.400	656	1.068	55	69	404	1.171	614	1.011
CY	0	2	10	23	7	9	1	0	18	12	5	8
LV	6	5	16	67	40	34	7	1	14	75	32	40
LT	-	-	-	-	-	-	7	4	41	95	56	52
LU	1	2	6	14	2	9	2	0	5	19	10	9
HU	20	11	42	237	170	121	7	14	50	227	156	135
MT	-	-	-	-	-	-	-	-	-	-	-	-
NL	24	13	76	171	91	187	8	14	81	126	80	164
AT	8	24	84	156	105	154	10	14	56	148	85	142
PL	90	87	585	1.327	823	653	91	83	551	1.194	786	647
PT	14	10	65	274	155	195	11	8	65	215	142	193
RO	90	52	231	740	470	457	76	40	220	704	397	422
SI	3	2	19	46	34	26	3	2	22	43	28	27
SK	-	-	-	-	-	-	-	-	-	-	-	-
FI	7	14	41	84	51	58	6	12	36	79	52	73
SE	7	10	41	107	49	71	4	7	40	77	56	76
UK	56	66	344	631	283	422	41	48	348	642	282	409
EU	737	783	4.281	10.412	5.394	6.726	650	634	3.899	9.422	5.051	6.513
Yearly Change	-8,6%	-7,6%	-15,9%	-9,9%	-5,5%	-3,5%	-13,4%	-23,5%	-9,8%	-10,5%	-6,8%	-3,3%
IS	0	0	2	2	1	4	2	3	2	4	2	2
NO	4	6	20	60	27	28	4	6	29	60	44	44
CH	31	6	39	92	78	93	12	2	30	68	57	100

Source: CARE (EU road accidents database) or national publications

Last update: May 2017

Annual Accident Report 2017

Table 16: Annual number of fatalities by age group by country, 2014-2015

	2014						2015					
	0-14	15-17	18-24	25-49	50-64	65+	0-14	15-17	18-24	25-49	50-64	65+
BE	10	22	117	255	137	178	19	17	101	268	140	184
BG	-	-	-	-	-	-	-	-	-	-	-	-
CZ	14	11	100	288	142	131	18	4	103	281	149	178
DK	6	3	22	61	32	58	6	4	32	54	33	49
DE	71	91	496	1.045	687	987	84	72	473	1.068	736	1.024
EE	1	2	13	27	19	16	4	4	5	29	12	13
IE	-	-	-	-	-	-	-	-	-	-	-	-
EL	10	19	114	300	160	187	6	19	112	297	130	225
ES	37	23	130	648	358	479	25	27	144	659	320	505
FR	112	116	582	1.255	547	772	101	125	619	1.242	543	829
HR	8	5	36	111	67	81	14	7	45	140	79	63
IT	62	70	369	1.129	645	1.056	39	57	379	1.168	646	1.088
CY	0	2	12	16	4	11	1	1	11	24	4	16
LV	7	3	30	80	37	42	11	6	20	66	42	33
LT	15	9	33	97	63	49	5	6	29	87	46	66
LU	1	0	5	18	9	2	0	2	5	11	10	8
HU	11	7	59	229	163	155	11	9	61	271	145	144
MT	-	-	-	-	-	-	-	-	-	-	-	-
NL	19	17	69	136	62	173	20	15	70	142	108	176
AT	8	16	59	130	102	115	11	17	72	145	93	141
PL	80	71	499	1.117	735	692	70	67	446	1.044	690	619
PT	8	11	53	215	144	206	14	8	48	203	142	177
RO	91	37	177	624	468	420	76	40	207	703	409	450
SI	2	1	9	51	19	26	3	4	16	39	29	29
SK	-	-	-	-	-	-	-	-	-	-	-	-
FI	10	12	32	78	41	56	14	7	48	79	51	67
SE	7	7	25	78	54	99	-	-	-	-	-	-
UK	50	38	335	662	295	474	52	48	309	648	303	444
EU	688	637	3.632	9.225	5.235	6.717	659	617	3.636	9.321	5.159	6.879
Yearly Change	5,6%	0,5%	-7,3%	-2,1%	3,5%	3,0%	-4,4%	-3,3%	0,1%	1,0%	-1,5%	2,4%
IS	0	1	1	1	1	0	2	0	5	3	1	5
NO	4	4	18	48	25	47	2	2	31	36	22	24
CH	9	2	38	65	43	86	7	4	35	66	44	97

Source: CARE (EU road accidents database) or national publications
Last update: May 2017

Table 17: Annual number of female fatalities by country, 2006-2015

	2006	2007	2008	2009	2010	2011	2012	2013	2014	2015
BE	248	215	221	234	203	192	179	173	166	179
BG	-	-	231	201	-	-	-	-	-	-
CZ	225	275	259	225	177	187	167	150	164	154
DK	87	105	107	91	85	59	45	65	43	45
DE	1.371	1.309	1.229	1.102	997	1.038	950	905	867	910
EE	50	45	34	26	24	27	23	27	27	23
IE	97	85	75	56	46	56	54	46	-	-
EL	290	338	304	250	245	221	182	187	146	142
ES	899	823	676	621	556	465	449	392	398	395
FR	1.155	1.118	1.013	1.041	953	939	923	763	843	855
HR	-	-	157	141	102	84	69	84	64	74
IT	1.277	1.005	960	926	846	855	738	698	719	669
CY	15	14	17	12	10	13	14	9	13	21
LV	97	100	77	42	26	8	47	39	46	46
LT	-	-	-	-	-	-	-	61	75	74
LU	10	7	8	13	8	11	8	11	6	7
HU	293	314	237	207	181	169	163	159	167	173
MT	0	1	3	5	5	-	-	-	-	-
NL	212	192	179	175	145	162	146	131	134	131
AT	190	161	170	155	143	138	153	113	115	132
PL	1.232	1.333	1.321	1.109	913	938	845	792	771	707
PT	182	188	209	173	203	216	152	135	134	119
RO	661	740	765	694	575	473	500	487	457	463
SI	42	59	36	39	34	28	33	31	30	30
SK	134	156	111	88	92	-	-	-	-	-
FI	95	101	79	71	68	81	64	66	62	72
SE	112	127	111	92	67	78	67	65	79	-
UK	806	752	682	597	497	499	429	456	481	434
EU	10.230	10.012	9.331	8.447	7.463	7.296	6.759	6.343	6.351	6.278
Yearly Change		-2,1%	-6,8%	-9,5%	-11,6%	-2,2%	-7,4%	-6,2%	0,1%	-1,2%
IS	11	2	2	3	4	4	2	8	2	4
NO	73	70	60	45	50	50	38	52	39	30
CH	90	82	90	80	83	80	90	78	56	65

Source: CARE (EU road accidents database) or national publications
Last update: May 2017

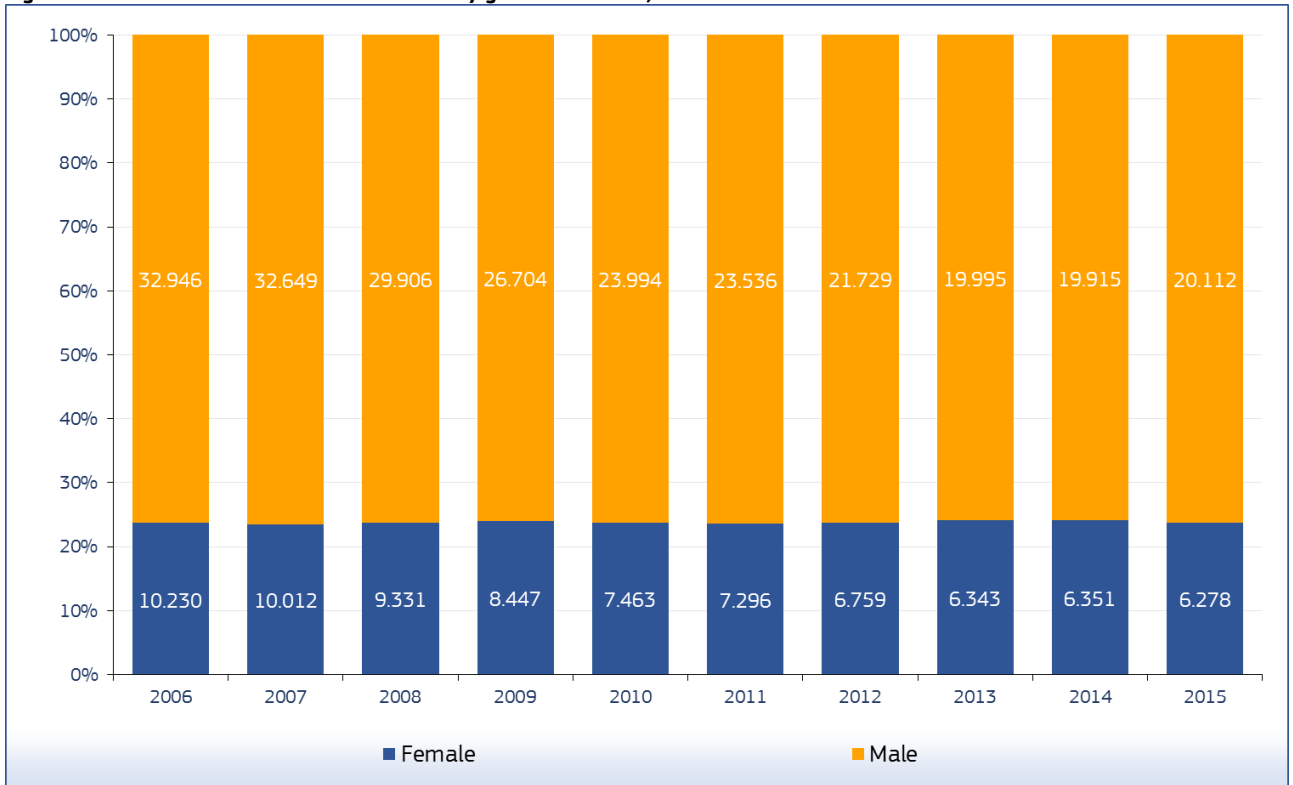
Annual Accident Report 2017

Table 18: Annual number of male fatalities by country, 2006-2015

	2006	2007	2008	2009	2010	2011	2012	2013	2014	2015
BE	818	850	717	705	629	659	589	549	557	550
BG	-	-	788	700	-	-	-	-	-	-
CZ	838	946	817	659	607	574	560	492	508	561
DK	219	300	299	212	170	161	122	126	139	133
DE	3.717	3.638	3.247	3.050	2.651	2.971	2.650	2.433	2.509	2.549
EE	152	147	97	71	55	74	64	54	51	44
IE	262	250	199	182	161	130	108	142	-	-
EL	1.361	1.268	1.244	1.201	1.013	920	806	692	649	651
ES	3.192	2.985	2.412	2.087	1.917	1.589	1.447	1.279	1.289	1.292
FR	3.554	3.502	3.262	3.232	3.039	3.024	2.730	2.505	2.541	2.604
HR	-	-	505	406	324	334	324	284	244	274
IT	4.392	4.126	3.765	3.311	3.268	3.005	3.015	2.703	2.662	2.759
CY	71	75	65	59	50	58	37	35	32	36
LV	309	317	239	166	121	109	128	137	166	142
LT	-	-	-	-	-	-	-	194	192	165
LU	33	38	27	35	24	22	26	34	29	29
HU	1.008	916	757	612	555	467	438	429	457	468
MT	11	11	6	10	8	-	-	-	-	-
NL	518	517	498	469	392	384	416	345	342	400
AT	540	530	509	478	409	385	378	342	315	347
PL	3.993	4.241	4.099	3.456	2.977	3.243	2.725	2.563	2.431	2.231
PT	779	779	674	666	734	675	564	501	503	473
RO	1.926	2.060	2.300	2.102	1.802	1.545	1.542	1.374	1.361	1.430
SI	220	232	178	132	104	113	97	94	78	90
SK	480	505	495	296	279	-	-	-	-	-
FI	241	279	265	208	204	211	191	192	167	194
SE	333	344	286	266	199	241	218	195	191	-
UK	2.492	2.307	1.962	1.740	1.408	1.461	1.373	1.314	1.373	1.370
EU	32.946	32.649	29.906	26.704	23.994	23.536	21.729	19.995	19.915	20.112
Yearly Change		-0,9%	-8,4%	-10,7%	-10,2%	-1,9%	-7,7%	-8,0%	-0,4%	1,0%
IS	20	13	10	14	4	8	7	7	2	12
NO	169	163	195	167	158	118	107	135	108	87
CH	280	302	267	269	244	240	249	191	187	188

Source: CARE (EU road accidents database) or national publications
Last update: May 2017

Figure 19: Annual distribution of fatalities by gender in the EU, 2006-2015



Source: CARE (EU road accidents database) or national publications
 Last update: May 2017

Table 19: Annual number of female fatalities as drivers by country, 2006-2015

	2006	2007	2008	2009	2010	2011	2012	2013	2014	2015
BE	136	120	105	113	111	88	95	74	80	95
BG	-	-	36	23	-	-	-	-	-	-
CZ	70	86	74	77	54	64	51	41	56	73
DK	38	56	58	45	43	32	23	27	18	19
DE	664	669	591	530	499	482	489	403	438	473
EE	13	11	11	5	9	2	6	7	8	5
IE	41	29	36	31	21	24	34	23	-	-
EL	53	64	64	44	60	52	33	44	35	31
ES	253	238	176	190	150	118	107	109	104	95
FR	527	507	451	473	435	423	433	337	383	365
HR	-	-	37	34	24	24	14	18	15	23
IT	403	353	337	313	306	317	273	258	244	246
CY	3	3	6	0	0	5	6	3	3	7
LV	11	14	15	14	7	0	13	8	9	7
LT	-	-	-	-	-	-	-	12	11	17
LU	3	4	6	3	4	4	1	7	3	3
HU	94	86	62	59	45	47	48	57	51	58
MT	0	0	2	0	1	-	-	-	-	-
NL	141	112	113	101	92	108	90	93	99	80
AT	96	69	81	63	58	60	76	49	61	65
PL	262	295	299	267	207	250	239	192	189	197
PT	44	46	63	46	46	52	34	35	37	32
RO	60	62	77	81	55	45	58	48	36	67
SI	15	24	13	10	16	11	16	16	12	11
SK	30	32	24	16	20	-	-	-	-	-
FI	42	46	46	30	31	32	29	31	32	36
SE	52	55	55	41	36	33	31	33	35	-
UK	288	269	260	220	204	204	153	182	192	154
EU	3.424	3.335	3.110	2.841	2.569	2.533	2.408	2.151	2.218	2.261
Yearly Change		-2,6%	-6,8%	-8,6%	-9,6%	-1,4%	-4,9%	-10,7%	3,1%	1,9%
IS	5	1	2	0	1	2	1	4	0	0
NO	33	34	26	14	21	25	25	26	21	14
CH	37	34	32	42	30	33	27	27	21	22

Source: CARE (EU road accidents database) or national publications
Last update: May 2017

Table 20: Annual number of male fatalities as drivers by country, 2006-2015

	2006	2007	2008	2009	2010	2011	2012	2013	2014	2015
BE	668	711	586	588	484	533	466	442	430	444
BG	-	-	421	413	-	-	-	-	-	-
CZ	569	666	555	466	440	388	402	345	392	385
DK	162	224	230	153	116	119	91	94	111	108
DE	2.924	2.848	2.527	2.408	2.085	2.344	2.108	1.906	1.983	2.011
EE	87	93	48	44	40	50	33	38	33	23
IE	160	155	134	125	91	81	67	101	-	-
EL	1.021	945	956	919	778	661	618	538	505	514
ES	2.308	2.180	1.750	1.500	1.360	1.170	1.056	906	939	953
FR	2.799	2.732	2.526	2.566	2.400	2.340	2.090	1.942	1.981	2.006
HR	-	-	335	270	209	245	237	197	170	202
IT	3.345	3.292	2.962	2.621	2.546	2.373	2.349	2.050	2.047	2.103
CY	49	56	49	44	38	45	31	26	24	26
LV	161	162	115	92	64	58	72	73	79	78
LT	-	-	-	-	-	-	-	93	86	85
LU	24	24	21	24	21	18	20	28	24	23
HU	628	601	480	430	341	321	280	266	309	294
MT	6	8	6	8	6	-	-	-	-	-
NL	417	406	417	387	317	315	341	289	283	323
AT	405	405	399	357	316	297	298	275	254	267
PL	2.030	2.144	2.070	1.898	1.648	1.692	1.517	1.373	1.356	1.287
PT	578	555	496	466	506	479	406	351	359	331
RO	848	937	1.152	974	872	764	763	672	657	733
SI	156	172	133	100	73	87	76	72	60	72
SK	236	289	258	162	150	-	-	-	-	-
FI	191	217	182	153	159	166	160	150	129	155
SE	253	266	231	207	154	170	145	138	143	-
UK	1.665	1.550	1.333	1.163	974	981	917	896	920	952
EU	22.539	22.487	20.465	18.631	16.694	16.359	15.205	13.830	13.944	14.188
Yearly Change		-0,2%	-9,0%	-9,0%	-10,4%	-2,0%	-7,1%	-9,0%	0,8%	1,7%
IS	14	12	8	9	3	5	5	6	2	9
NO	133	123	147	122	123	93	77	110	81	70
CH	206	227	218	204	181	183	183	144	148	146

Source: CARE (EU road accidents database) or national publications
Last update: May 2017

Table 21: Annual number of female fatalities as passengers by country, 2006-2015

	2006	2007	2008	2009	2010	2011	2012	2013	2014	2015
BE	60	49	74	66	46	53	40	50	45	46
BG	-	-	115	100	-	-	-	-	-	-
CZ	94	103	97	74	58	56	56	47	56	38
DK	20	23	24	22	24	12	7	23	13	12
DE	407	350	348	327	308	279	233	242	226	223
EE	12	18	8	11	10	14	6	8	4	9
IE	34	28	22	11	13	18	11	10	-	-
EL	142	171	141	135	119	100	81	78	76	64
ES	436	364	324	260	225	204	207	162	175	148
FR	403	374	322	356	306	314	280	245	239	316
HR	-	-	66	66	38	32	30	38	19	28
IT	562	396	370	322	315	282	253	240	253	208
CY	7	8	5	6	4	1	3	2	3	5
LV	32	34	24	13	9	2	15	11	19	22
LT	-	-	-	-	-	-	-	14	20	21
LU	2	1	0	4	4	4	5	1	3	0
HU	108	126	85	70	76	71	64	51	64	62
MT	0	0	0	3	3	-	-	-	-	-
NL	47	46	38	42	22	27	32	17	18	12
AT	49	56	45	53	33	39	44	28	21	35
PL	469	488	469	384	339	302	265	265	237	231
PT	76	92	95	79	80	85	52	53	42	39
RO	271	278	311	283	227	177	200	167	192	173
SI	17	19	12	19	8	12	9	7	12	9
SK	44	54	41	40	29	-	-	-	-	-
FI	29	41	17	30	21	29	22	18	14	20
SE	38	46	31	30	20	20	11	17	23	-
UK	286	254	203	191	161	143	144	144	125	133
EU	3.840	3.614	3.300	3.011	2.612	2.422	2.216	2.070	2.041	2.019
Yearly Change		-5,9%	-8,7%	-8,8%	-13,2%	-7,3%	-8,5%	-6,6%	-1,4%	-1,1%
IS	3	1	0	2	2	0	0	3	2	3
NO	23	24	21	20	18	17	7	18	11	15
CH	20	12	27	13	18	13	26	13	16	16

Source: CARE (EU road accidents database) or national publications
Last update: May 2017

Annual Accident Report 2017

Table 22: Annual number of male fatalities as passengers by country, 2006-2015

	2006	2007	2008	2009	2010	2011	2012	2013	2014	2015
BE	79	81	72	69	85	64	63	57	51	47
BG	-	-	180	167	-	-	-	-	-	-
CZ	128	134	112	97	70	81	62	52	47	74
DK	26	34	36	31	28	24	15	14	18	12
DE	383	385	357	296	280	290	243	227	202	207
EE	24	29	22	15	6	9	11	4	4	5
IE	54	43	34	31	38	16	21	23	-	-
EL	170	172	144	153	122	105	86	68	54	56
ES	484	441	343	289	269	184	158	128	134	126
FR	445	446	428	382	366	367	361	279	282	306
HR	-	-	87	74	50	46	40	46	31	34
IT	601	463	410	314	326	299	302	302	259	269
CY	8	5	6	12	5	7	1	5	4	3
LV	50	50	57	29	16	12	13	15	34	18
LT	-	-	-	-	-	-	-	38	41	35
LU	4	9	2	5	2	1	2	4	2	3
HU	176	131	118	76	85	73	57	67	50	80
MT	1	1	0	0	1	-	-	-	-	-
NL	59	59	53	50	44	29	33	26	22	19
AT	70	53	52	59	47	40	32	21	23	28
PL	673	704	711	555	473	533	393	386	304	308
PT	107	117	74	100	110	76	65	53	54	45
RO	374	409	458	443	353	285	293	248	236	271
SI	38	44	16	17	14	10	10	10	9	11
SK	90	69	79	53	46	-	-	-	-	-
FI	25	28	46	36	26	24	15	25	18	23
SE	43	43	31	28	20	30	21	25	17	-
UK	362	323	257	239	151	166	159	143	153	138
EU	4.779	4.579	4.223	3.659	3.238	3.023	2.708	2.480	2.286	2.372
Yearly Change		-4,2%	-7,8%	-13,4%	-11,5%	-6,6%	-10,4%	-8,4%	-7,8%	3,7%
IS	5	0	2	4	0	1	1	1	0	3
NO	17	29	30	30	22	17	14	15	16	6
CH	31	32	21	30	23	22	28	16	15	11

Source: CARE (EU road accidents database) or national publications
Last update: May 2017

Table 23: Annual number of female fatalities as pedestrians by country, 2006-2015

	2006	2007	2008	2009	2010	2011	2012	2013	2014	2015
BE	52	46	41	53	46	50	44	49	40	38
BG	-	-	80	78	-	-	-	-	-	-
CZ	61	86	88	74	65	67	60	62	52	43
DK	29	26	25	24	18	15	15	15	12	14
DE	300	290	290	245	190	277	228	260	203	214
EE	25	16	15	10	5	11	11	12	15	9
IE	22	28	17	14	12	14	9	13	-	-
EL	95	103	99	71	66	69	68	65	35	47
ES	211	221	176	171	181	144	135	122	120	152
FR	225	237	240	212	212	202	210	181	221	174
HR	-	-	53	41	40	28	25	28	30	23
IT	312	256	253	291	225	256	212	200	222	215
CY	5	3	6	6	6	7	5	4	7	9
LV	54	52	38	15	10	6	19	20	18	17
LT	-	-	-	-	-	-	-	34	44	35
LU	5	2	2	6	0	3	2	3	0	4
HU	91	102	90	78	60	51	51	51	52	53
MT	0	1	1	2	1	-	-	-	-	-
NL	24	34	28	32	31	26	24	21	16	22
AT	45	36	44	39	52	39	33	36	33	32
PL	501	550	553	458	367	386	341	335	345	279
PT	62	50	51	49	77	79	66	47	55	48
RO	330	400	377	330	293	251	242	272	229	223
SI	10	16	11	10	9	5	8	8	6	10
SK	60	70	46	32	43	-	-	-	-	-
FI	24	14	16	11	16	20	13	17	16	16
SE	21	25	24	19	11	25	17	15	21	-
UK	232	229	219	186	132	152	132	130	164	147
EU	2.962	3.060	2.917	2.591	2.280	2.339	2.126	2.122	2.091	1.980
Yearly Change		3,3%	-4,7%	-11,2%	-12,0%	2,6%	-9,1%	-0,2%	-1,5%	-5,3%
IS	3	0	0	1	1	2	1	1	0	1
NO	17	12	13	11	11	8	6	8	7	1
CH	33	36	31	25	35	34	37	38	19	27

Source: CARE (EU road accidents database) or national publications
Last update: May 2017

Table 24: Annual number of male fatalities as pedestrians by country, 2006-2015

	2006	2007	2008	2009	2010	2011	2012	2013	2014	2015
BE	70	57	58	48	58	62	60	49	65	54
BG	-	-	187	120	-	-	-	-	-	-
CZ	141	146	150	95	97	105	96	95	69	102
DK	31	42	33	28	26	18	16	18	10	13
DE	410	405	363	346	286	337	299	300	324	331
EE	37	21	26	12	9	15	18	11	11	15
IE	48	52	31	26	32	33	20	18	-	-
EL	170	151	144	129	113	154	102	86	90	81
ES	400	363	319	298	288	234	233	246	216	213
FR	310	324	308	284	273	317	279	284	278	292
HR	-	-	83	62	65	43	47	41	43	38
IT	446	371	393	376	396	333	364	351	356	387
CY	14	14	10	3	7	6	5	4	3	7
LV	98	105	67	45	41	39	43	49	53	46
LT	-	-	-	-	-	-	-	61	65	45
LU	5	5	4	6	1	3	4	2	3	3
HU	204	184	159	106	129	73	101	96	98	94
MT	4	2	0	2	1	-	-	-	-	-
NL	42	52	28	31	31	39	40	30	34	38
AT	65	72	58	62	46	48	48	46	38	52
PL	1.290	1.393	1.318	1.003	856	1.018	815	804	771	636
PT	93	106	104	99	118	120	93	97	90	97
RO	704	713	690	685	575	496	486	454	468	426
SI	26	15	28	14	17	16	11	12	8	6
SK	154	147	158	81	83	-	-	-	-	-
FI	25	34	37	19	19	21	16	17	20	16
SE	34	33	21	25	20	28	33	27	31	-
UK	465	434	372	338	283	314	297	275	300	280
EU	5.618	5.572	5.209	4.404	4.051	4.137	3.791	3.677	3.666	3.525
Yearly Change		-0,8%	-6,5%	-15,5%	-8,0%	2,1%	-8,4%	-3,0%	-0,3%	-3,8%
IS	1	1	0	1	1	2	1	0	0	0
NO	19	11	18	15	13	8	16	10	11	11
CH	43	43	28	35	40	35	38	31	24	31

Source: CARE (EU road accidents database) or national publications
Last update: May 2017

4 Fatalities 2015

4.1 People involved

4.1.1 Age and gender

Table 25: Number of total fatalities by age group by country, 2015

	unknown	0-14	15-17	18-24	25-49	50-64	65+	Total
BE	3	19	17	101	268	140	184	732
BG	0	30	33	157	368	155	158	901
CZ	1	18	4	103	281	149	178	734
DK	0	6	4	32	54	33	49	178
DE	2	84	72	473	1,068	736	1,024	3,459
EE	0	4	4	5	29	12	13	67
IE	0	6	4	36	74	22	46	188
EL	4	6	19	112	297	130	225	793
ES	9	25	27	144	659	320	505	1,689
FR	0	101	125	619	1,242	543	829	3,459
HR	0	14	7	45	140	79	63	348
IT	51	39	57	379	1,168	646	1,088	3,428
CY	-	1	1	11	24	4	16	57
LV	10	11	6	20	66	42	33	188
LT	3	5	6	29	87	46	66	242
LU	0	0	2	5	11	10	8	36
HU	3	11	9	61	271	145	144	644
MT	-	1	0	4	7	1	0	13
NL	0	20	15	70	142	108	176	531
AT	0	11	17	72	145	93	141	479
PL	2	70	67	446	1,044	690	619	2,938
PT	1	14	8	48	203	142	177	593
RO	8	76	40	207	703	409	450	1,893
SI	0	3	4	16	39	29	29	120
SK	53	11	7	59	126	67	48	371
FI	0	14	7	48	79	51	67	266
SE	0	7	7	25	78	54	99	270
UK	0	52	48	309	648	303	444	1,804
EU	151	659	617	3,636	9,321	5,159	6,879	26,421
%	0,6%	2,5%	2,3%	13,8%	35,3%	19,5%	26,0%	100,0%
IS	0	2	0	5	3	1	5	16
NO	0	2	2	31	36	22	24	117
CH	0	7	4	35	66	44	97	253

Source: CARE (EU road accidents database) or national publications
Last update: May 2017

Table 26: Number of female fatalities by age group by country, 2015

	unknown	0-14	15-17	18-24	25-49	50-64	65+	Total
BE	0	11	6	20	50	30	62	179
BG	-	8	6	28	67	29	63	201
CZ	0	0	1	19	47	34	53	154
DK	0	2	2	5	7	12	17	45
DE	0	29	24	100	192	166	399	910
EE	0	2	3	1	6	5	6	23
IE	0	4	3	7	12	5	15	46
EL	0	3	4	24	48	16	47	142
ES	3	11	4	38	101	64	174	395
FR	0	47	33	128	206	115	326	855
HR	0	6	5	3	20	18	22	74
IT	15	11	10	59	175	106	293	669
CY	0	1	0	2	9	2	7	21
LV	2	6	0	3	15	4	16	46
LT	0	1	2	3	23	14	31	74
LU	0	0	0	0	4	1	2	7
HU	0	6	3	14	46	38	66	173
MT	-	1	0	2	2	0	0	5
NL	0	4	8	8	25	29	57	131
AT	0	3	2	13	33	22	59	132
PL	0	36	21	68	172	146	264	707
PT	0	5	1	8	27	28	50	119
RO	1	33	13	35	134	81	166	463
SI	0	1	0	4	3	6	16	30
SK	12	3	3	12	19	20	23	92
FI	0	7	3	9	23	5	25	72
SE	0	3	0	7	24	13	32	79
UK	0	20	16	42	105	72	179	434
EU	33	264	173	662	1.595	1.081	2.470	6.278
%	0,5%	4,2%	2,8%	10,5%	25,4%	17,2%	39,3%	100,0%
IS	0	1	0	2	0	0	1	4
NO	0	0	2	9	4	9	6	30
CH	0	4	0	3	12	10	36	65

Source: CARE (EU road accidents database) or national publications
Last update: May 2017

Table 27: Number of male fatalities by age group by country, 2015

	unknown	0-14	15-17	18-24	25-49	50-64	65+	Total
BE	2	8	11	81	217	109	122	550
BG	-	22	27	129	301	126	95	700
CZ	1	0	2	84	234	115	125	561
DK	0	4	2	27	47	21	32	133
DE	2	55	48	373	876	570	625	2.549
EE	0	2	1	4	23	7	7	44
IE	0	2	1	29	62	17	31	142
EL	4	3	15	88	249	114	178	651
ES	5	14	23	106	557	256	331	1.292
FR	0	54	92	491	1.036	428	503	2.604
HR	0	8	2	42	120	61	41	274
IT	36	28	47	320	993	540	795	2.759
CY	0	0	1	9	15	2	9	36
LV	8	5	6	17	51	38	17	142
LT	0	4	4	26	64	32	35	165
LU	0	0	2	5	7	9	6	29
HU	0	5	6	47	225	107	78	468
MT	-	0	0	2	5	1	0	8
NL	0	16	7	62	117	79	119	400
AT	0	8	15	59	112	71	82	347
PL	2	34	46	378	872	544	355	2.231
PT	1	9	7	40	176	114	126	473
RO	7	43	27	172	569	328	284	1.430
SI	0	2	4	12	36	23	13	90
SK	41	8	4	47	107	47	25	279
FI	0	7	4	39	56	46	42	194
SE	0	4	7	18	54	41	67	191
UK	0	32	32	267	543	231	265	1.370
EU	109	377	443	2.974	7.724	4.077	4.408	20.112
%	0,5%	1,9%	2,2%	14,8%	38,4%	20,3%	21,9%	100,0%
IS	0	1	0	3	3	1	4	12
NO	0	2	0	22	32	13	18	87
CH	0	3	4	32	54	34	61	188

Source: CARE (EU road accidents database) or national publications
Last update: May 2017

4.2 Modes of transport

4.2.1 Mode of transport by age

Table 28: Number of pedestrian fatalities by age group by country, 2015

	unknown	0-14	15-17	18-24	25-49	50-64	65+	Total
BE	1	8	0	7	22	20	34	92
BG	0	6	2	9	33	42	106	198
CZ	1	5	1	9	40	31	63	150
DK	0	4	0	2	5	5	11	27
DE	2	28	11	38	108	73	285	545
EE	0	2	0	1	7	6	8	24
IE	0	1	2	1	9	6	12	31
EL	1	3	1	5	25	12	81	128
ES	5	8	3	18	70	54	209	367
FR	0	16	15	30	106	72	227	466
HR	0	3	1	2	11	14	30	61
IT	7	9	9	20	101	78	378	602
CY	0	0	0	0	5	1	10	16
LV	5	5	1	2	19	15	16	63
LT	1	1	1	5	20	19	34	81
LU	0	0	0	0	2	2	3	7
HU	2	1	1	10	44	44	47	149
MT	-	0	0	0	0	0	1	1
NL	0	2	1	3	15	19	20	60
AT	0	5	2	8	11	9	49	84
PL	1	17	13	45	222	292	325	915
PT	1	5	2	3	22	32	81	146
RO	8	34	11	22	158	149	267	649
SI	0	0	0	0	4	2	10	16
SK	20	4	3	9	29	32	29	126
FI	0	5	0	1	6	4	16	32
SE	0	3	1	3	9	5	31	52
UK	0	24	10	40	111	82	160	427
EU	55	199	91	293	1.214	1.120	2.543	5.515
%	1,0%	3,6%	1,7%	5,3%	22,0%	20,3%	46,1%	100,0%
IS	-	-	-	-	-	-	-	-
NO	0	2	0	1	2	1	6	12
CH	0	2	1	2	7	9	37	58

Source: CARE (EU road accidents database) or national publications

Last update: May 2017

Table 29: Number of pedal cyclist fatalities by age group by country, 2015

	unknown	0-14	15-17	18-24	25-49	50-64	65+	Total
BE	0	3	5	4	9	16	46	83
BG	0	1	0	1	7	8	12	29
CZ	0	0	0	4	16	23	41	84
DK	0	1	1	1	4	3	16	26
DE	0	17	8	15	61	84	198	383
EE	0	0	0	0	0	0	0	0
IE	0	0	0	0	2	0	3	5
EL	1	0	0	1	4	4	1	11
ES	2	0	3	2	21	14	16	58
FR	0	6	6	5	37	44	51	149
HR	0	5	2	0	9	11	7	34
IT	3	4	5	11	46	54	128	251
CY	0	0	0	0	0	0	1	1
LV	1	0	0	0	0	4	4	9
LT	1	1	0	0	5	7	8	22
LU	0	0	0	0	0	0	0	0
HU	0	2	1	1	23	24	32	83
MT	-	0	0	0	0	-	-	0
NL	0	10	6	5	12	17	57	107
AT	0	1	0	1	7	12	18	39
PL	0	14	4	9	61	103	109	300
PT	0	2	1	1	7	7	7	25
RO	0	10	4	6	39	55	48	162
SI	0	1	1	1	2	4	5	14
SK	1	1	1	1	7	8	8	27
FI	0	1	0	1	5	9	14	30
SE	0	0	2	1	4	10	16	33
UK	0	4	2	8	42	25	19	100
EU	9	84	52	79	430	546	865	2.065
%	0,4%	4,1%	2,5%	3,8%	20,8%	26,4%	41,9%	100,0%
IS	0	0	0	0	0	1	0	1
NO	0	0	0	0	1	2	2	5
CH	0	2	0	3	9	8	17	39

Source: CARE (EU road accidents database) or national publications
Last update: May 2017

Table 30: Number of moped rider and passenger fatalities by age group by country, 2015

	unknown	0-14	15-17	18-24	25-49	50-64	65+	Total
BE	0	0	2	2	9	5	1	19
BG	0	0	1	2	1	1	0	5
CZ	0	0	0	0	2	3	1	6
DK	0	0	2	4	7	2	4	19
DE	0	0	7	3	11	21	20	62
EE	0	0	0	0	0	0	0	0
IE	-	-	-	-	-	-	-	0
EL	0	0	3	4	10	3	12	32
ES	0	0	9	6	21	7	13	56
FR	0	9	45	41	35	17	8	155
HR	0	1	0	1	7	2	3	14
IT	0	1	13	21	27	14	29	105
CY	0	0	1	0	1	0	0	2
LV	0	0	1	1	0	2	2	6
LT	0	0	2	0	1	0	0	3
LU	0	0	0	0	0	0	0	0
HU	0	0	1	1	11	8	6	27
MT	-	-	-	-	-	-	-	0
NL	0	2	3	5	11	8	6	35
AT	0	0	5	1	1	0	1	8
PL	0	0	8	8	20	15	14	65
PT	0	0	0	1	14	14	13	42
RO	0	0	0	5	18	7	4	34
SI	0	0	0	0	0	0	1	1
SK	-	-	-	-	-	-	-	0
FI	0	0	1	0	0	1	0	2
SE	0	1	2	0	0	3	2	8
UK	0	0	2	3	2	1	0	8
EU	0	14	108	109	209	134	140	714
%	0,0%	2,0%	15,1%	15,3%	29,3%	18,8%	19,6%	100,0%
IS	-	-	-	-	-	-	-	-
NO	0	0	0	0	1	0	0	1
CH	0	0	0	1	0	0	2	3

Source: CARE (EU road accidents database) or national publications
Last update: May 2017

Table 31: Number of motorcycle rider and passenger fatalities by age group by country, 2015

	unknown	0-14	15-17	18-24	25-49	50-64	65+	Total
BE	0	0	1	12	62	19	6	100
BG	0	1	2	15	25	2	3	48
CZ	0	0	2	8	58	16	7	91
DK	0	0	0	4	10	3	2	19
DE	0	0	26	116	284	164	49	639
EE	0	0	0	0	0	0	0	0
IE	0	0	0	1	19	5	1	26
EL	1	0	10	46	126	36	18	237
ES	0	0	4	31	204	73	17	329
FR	0	2	11	107	345	132	17	614
HR	0	0	0	15	40	3	0	58
IT	2	2	18	101	426	175	49	773
CY	0	0	0	5	8	0	0	13
LV	1	0	0	1	4	1	0	7
LT	0	0	0	4	8	1	0	13
LU	0	0	2	0	2	2	0	6
HU	0	0	0	4	38	6	2	50
MT	-	0	-	0	3	0	0	3
NL	0	1	1	6	26	9	0	43
AT	0	0	5	14	30	26	8	83
PL	0	0	7	56	127	14	4	208
PT	0	0	1	6	53	11	2	73
RO	0	0	1	12	38	2	2	55
SI	0	0	1	2	12	8	2	25
SK	3	0	0	7	15	1	1	27
FI	0	1	0	4	8	6	1	20
SE	0	0	1	3	18	6	3	31
UK	0	0	6	71	188	76	20	361
EU	7	7	99	651	2.177	797	214	3.952
%	0,2%	0,2%	2,5%	16,5%	55,1%	20,2%	5,4%	100,0%
IS	0	0	0	0	1	0	0	1
NO	0	0	0	5	11	3	1	20
CH	0	0	3	9	21	19	14	66

Source: CARE (EU road accidents database) or national publications
Last update: May 2017

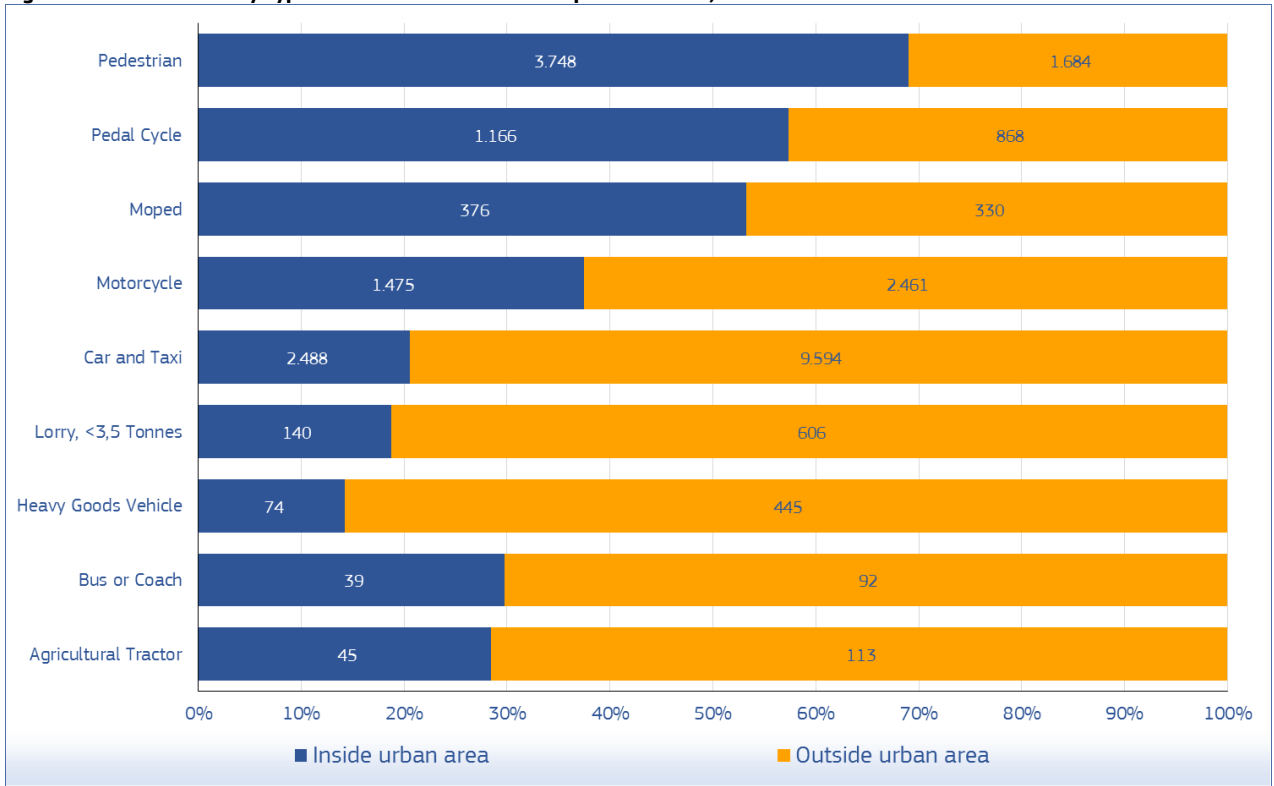
Table 32: Number of car driver and passenger fatalities by age group by country, 2015

	unknown	0-14	15-17	18-24	25-49	50-64	65+	Total
BE	0	7	8	71	133	57	85	361
BG	0	20	28	123	282	84	33	570
CZ	0	12	1	77	150	63	62	365
DK	0	1	0	18	23	16	16	74
DE	0	34	20	287	517	333	433	1.624
EE	0	2	3	4	19	3	4	35
IE	0	2	1	30	38	6	30	107
EL	1	2	5	52	111	56	87	314
ES	0	16	6	81	264	120	206	693
FR	0	63	42	408	617	216	450	1.796
HR	0	5	4	25	67	44	19	164
IT	15	20	12	214	499	262	454	1.476
CY	0	1	0	6	10	2	5	24
LV	3	6	3	15	33	15	10	85
LT	0	3	3	17	51	17	24	115
LU	0	0	0	4	5	2	5	16
HU	1	8	6	42	140	54	53	304
MT	-	1	0	4	4	0	0	9
NL	0	3	3	43	68	39	58	214
AT	0	5	5	47	84	36	64	241
PL	1	39	32	314	558	229	159	1.332
PT	0	4	3	35	68	49	55	214
RO	0	28	23	148	350	143	95	787
SI	0	0	1	10	12	11	4	38
SK	29	6	3	41	62	21	9	171
FI	0	7	5	40	54	21	29	156
SE	0	2	1	16	39	23	41	122
UK	0	21	26	175	257	100	219	798
EU	50	318	244	2.347	4.515	2.022	2.709	12.205
%	0,4%	2,6%	2,0%	19,2%	37,0%	16,6%	22,2%	100,0%
IS	0	0	0	5	2	0	5	12
NO	0	0	2	23	15	14	13	67
CH	0	3	0	20	23	7	22	75

Source: CARE (EU road accidents database) or national publications
Last update: May 2017

4.2.2 Mode of transport by type of area

Figure 20: Fatalities by type of area and mode of transport in the EU, 2015



Source: CARE (EU road accidents database) or national publications
 Last update: May 2017

Table 33: Number of fatalities by mode of transport and type of area by country (part 1), 2015

	Agricultural tractor		Bus or coach		Car + Taxi		Heavy goods vehicle		Lorry, under 3.5 tonnes	
	inside urban area	outside urban area	inside urban area	outside urban area	inside urban area	outside urban area	inside urban area	outside urban area	inside urban area	outside urban area
BE	0	4	1	3	68	293	0	16	9	28
BG	1	0	1	4	124	446	3	30	-	-
CZ	0	4	0	1	59	306	1	8	2	13
DK	0	0	0	0	12	62	0	2	1	8
DE	12	13	4	1	217	1.407	8	76	3	59
EE	0	0	2	6	4	29	1	2	-	-
IE	-	-	0	0	16	91	0	2	2	10
EL	1	11	2	1	97	217	2	9	13	31
ES	2	19	0	2	61	632	1	58	9	84
FR	2	3	1	42	278	1.518	7	49	14	106
HR	3	2	1	0	89	75	3	3	1	4
IT	5	17	4	2	395	1.081	2	42	20	98
CY	-	0	0	-	10	14	0	0	0	0
LV	0	6	2	0	6	79	0	5	1	2
LT	-	-	-	-	-	-	-	-	-	-
LU	0	0	0	0	1	15	0	1	1	5
HU	-	-	1	0	60	244	2	9	5	12
MT	0	-	0	-	9	-	0	-	0	-
NL	0	1	0	1	16	194	1	7	0	14
AT	0	3	0	0	38	203	2	6	1	11
PL	6	9	3	11	300	1.032	14	60	-	-
PT	6	7	2	6	76	138	2	8	19	27
RO	6	1	9	9	343	444	11	4	28	49
SI	0	2	0	0	10	28	0	1	0	0
SK	-	-	0	0	33	138	9	10	1	0
FI	1	4	0	0	17	139	1	3	3	10
SE	0	0	0	2	10	110	0	5	1	7
UK	0	7	6	1	139	659	4	29	6	28
EU	45	113	39	92	2.488	9.594	74	445	140	606
%	28,5%	71,5%	29,8%	70,2%	20,6%	79,4%	14,3%	85,7%	18,8%	81,2%
IS	-	1	0	0	2	10	0	0	0	0
NO	0	1	0	1	5	62	0	4	0	4
CH	0	4	1	0	16	59	1	2	0	1

Source: CARE (EU road accidents database) or national publications

Last update: May 2017

Table 34: Number of fatalities by mode of transport and type of area by country (part 2), 2015

	Moped		Motor cycle		Pedal cycle		Pedestrian		Total		Total
	inside urban area	outside urban area	inside urban area	outside urban area	inside urban area	outside urban area	inside urban area	outside urban area	inside urban area	outside urban area	
BE	8	11	32	68	38	45	63	29	219	497	716
BG	5	0	21	27	20	9	135	63	310	579	889
CZ	1	5	21	70	39	45	92	58	215	510	725
DK	10	9	8	11	17	9	14	13	62	114	176
DE	31	31	138	501	236	147	382	163	1.031	2.398	3.429
EE	0	-	0	-	0	0	12	14	19	51	70
IE	-	-	4	22	1	4	12	19	35	148	183
EL	17	15	145	92	7	4	104	24	388	404	792
ES	28	28	82	247	10	48	247	120	440	1.238	1.678
FR	75	80	215	399	66	83	308	158	966	2.438	3.404
HR	12	2	32	26	26	8	53	8	220	128	348
IT	61	44	389	384	161	90	458	144	1.495	1.902	3.397
CY	2	0	11	2	0	1	14	2	37	19	56
LV	1	5	3	4	4	5	26	37	43	143	186
LT	-	-	-	-	-	-	2	-	2	0	2
LU	0	0	0	6	0	0	3	4	5	31	36
HU	20	7	21	29	56	27	94	55	259	383	642
MT	-	-	3	0	0	-	-	-	12	0	12
NL	12	19	12	28	43	63	26	31	110	358	468
AT	2	6	10	73	24	15	51	33	128	350	478
PL	29	36	112	96	174	126	601	314	1.239	1.684	2.923
PT	29	13	38	35	17	8	111	35	300	277	577
RO	27	7	35	20	116	46	512	137	1.087	717	1.804
SI	0	1	3	22	7	7	12	4	32	65	97
SK	-	0	13	14	15	12	86	40	157	214	371
FI	1	1	4	16	22	8	23	9	72	190	262
SE	3	4	6	25	18	7	28	22	66	182	248
UK	2	6	117	244	49	51	279	148	602	1.173	1.775
EU	376	330	1.475	2.461	1.166	868	3.748	1.684	9.551	16.193	25.744
%	53,3%	46,7%	37,5%	62,5%	57,3%	42,7%	69,0%	31,0%	37,1%	62,9%	-
IS	0	-	0	1	1	0	0	1	0	0	16
NO	0	1	4	16	3	2	9	3	8	3	115
CH	2	1	21	45	28	11	48	10	10	17	250

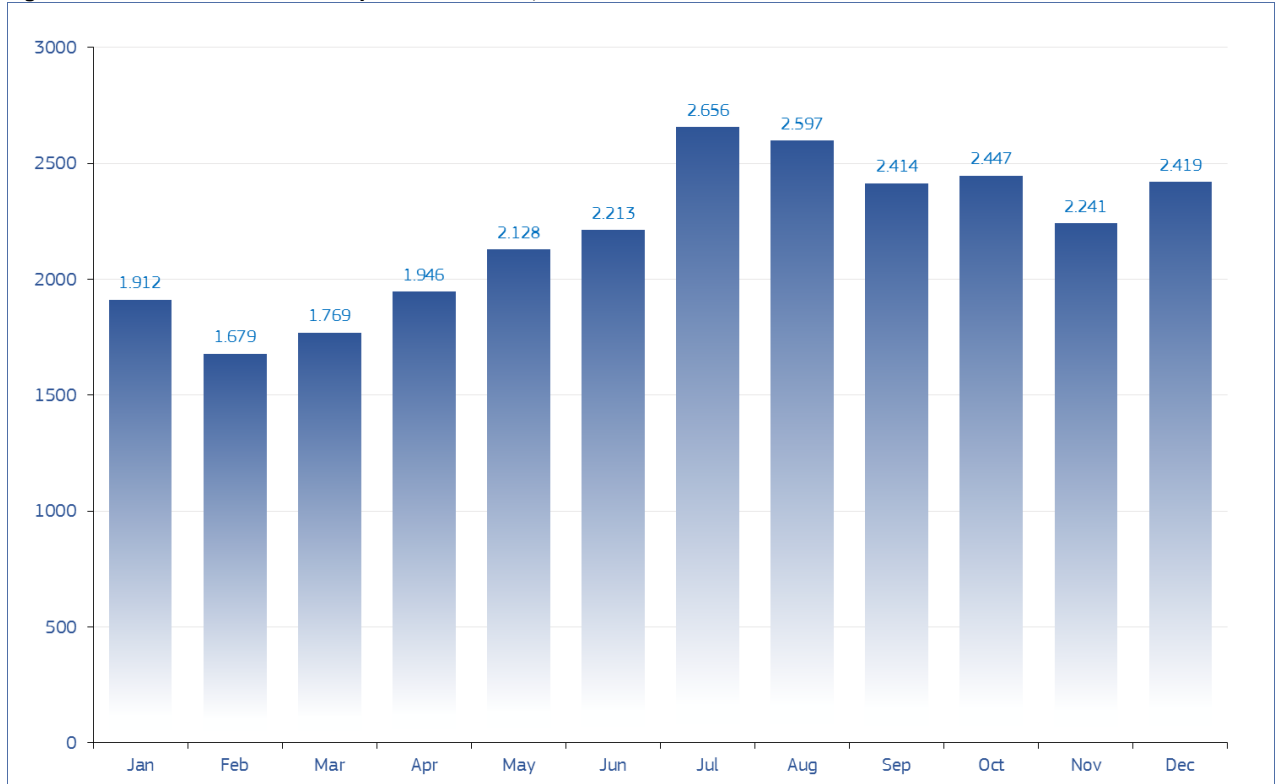
Source: CARE (EU road accidents database) or national publications

Last update: May 2017

4.3 Accident characteristics

4.3.1 Various periods of time (month, day of week, hour of day)

Figure 21: Number of fatalities by month in the EU, 2015



Source: CARE (EU road accidents database) or national publications
Last update: May 2017

Annual Accident Report 2017

Figure 22: Number of fatalities by month and road user type in the EU, 2015



Source: CARE (EU road accidents database) or national publications
 Last update: May 2017

Table 35: Number of fatalities by month by country (January to June), 2015

	January	February	March	April	May	June
BE	62	47	47	51	61	66
BG	46	56	55	75	93	66
CZ	39	40	49	50	58	60
DK	16	12	14	9	14	13
DE	223	202	230	284	312	343
EE	3	11	3	6	7	2
IE	19	14	15	12	17	13
EL	57	52	55	67	62	69
ES	119	113	113	116	157	129
FR	262	235	219	257	267	299
HR	25	14	15	18	39	26
IT	289	196	232	245	274	303
CY	1	4	3	2	3	4
LV	22	7	8	10	8	14
LT	21	22	12	15	12	20
LU	0	2	1	5	4	5
HU	55	46	51	29	56	57
MT	3	1	1	2	0	2
NL	38	34	34	44	40	40
AT	27	26	36	30	43	53
PL	211	192	233	216	201	217
PT	60	37	48	42	59	51
RO	98	120	107	145	121	128
SI	5	5	11	7	5	11
SK	31	27	21	20	21	27
FI	18	15	19	26	22	18
SE	18	17	21	19	22	28
UK	144	132	116	144	150	149
EU	1.912	1.679	1.769	1.946	2.128	2.213
%	7,2%	6,4%	6,7%	7,4%	8,1%	8,4%
IS	0	1	2	3	2	1
NO	6	7	10	4	11	9
CH	17	9	13	19	29	30

Source: CARE (EU road accidents database) or national publications
Last update: May 2017

Table 36: Number of fatalities by month by country (July to December), 2015

	July	August	September	October	November	December	Total
BE	74	77	54	60	70	63	732
BG	100	97	78	106	71	58	901
CZ	88	75	87	71	56	61	734
DK	15	12	16	22	16	19	178
DE	348	335	316	286	294	286	3.459
EE	3	9	6	1	10	6	67
IE	18	19	17	13	15	16	188
EL	76	96	64	59	60	76	793
ES	174	164	178	130	150	146	1.689
FR	353	332	257	378	296	304	3.459
HR	41	39	43	30	31	27	348
IT	394	335	315	287	263	295	3.428
CY	9	5	8	8	3	7	57
LV	14	30	17	18	17	23	188
LT	13	22	16	29	31	29	242
LU	3	2	7	1	4	2	36
HU	58	52	64	71	45	60	644
MT	2	1	0	0	1	0	13
NL	49	49	47	62	44	50	531
AT	53	53	54	34	34	36	479
PL	266	273	280	272	251	326	2.938
PT	47	47	53	41	61	47	593
RO	177	187	204	213	172	221	1.893
SI	26	14	10	11	8	7	120
SK	39	40	32	42	47	24	371
FI	22	38	22	29	20	17	266
SE	27	25	32	15	16	30	270
UK	167	169	137	158	155	183	1.804
EU	2.656	2.597	2.414	2.447	2.241	2.419	26.421
%	10,1%	9,8%	9,1%	9,3%	8,5%	9,2%	100,0%
IS	0	1	1	1	0	4	16
NO	15	14	11	7	13	10	117
CH	25	29	30	16	17	19	253

Source: CARE (EU road accidents database) or national publications
Last update: May 2017

Table 37: Number of driver fatalities by month by country (January to June), 2015

	January	February	March	April	May	June
BE	44	30	32	40	44	49
BG	19	28	27	36	42	34
CZ	17	19	31	36	43	42
DK	8	6	12	7	13	9
DE	135	131	164	217	232	261
EE	0	4	3	4	3	2
IE	13	11	11	7	11	11
EL	37	37	34	46	45	41
ES	77	81	65	75	86	78
FR	160	154	158	186	196	231
HR	13	6	9	12	28	21
IT	170	127	161	175	197	223
CY	1	0	2	2	2	1
LV	7	3	3	6	7	7
LT	9	6	7	9	4	14
LU	0	1	0	4	4	3
HU	22	23	33	19	28	31
MT	1	0	1	2	0	1
NL	25	24	22	38	30	34
AT	16	17	20	23	26	49
PL	80	78	124	122	134	135
PT	37	22	34	28	36	26
RO	30	40	40	70	67	58
SI	4	2	7	4	5	6
SK	11	9	8	10	8	17
FI	12	9	14	19	18	13
SE	10	13	10	12	17	17
UK	87	64	70	103	101	102
EU	1.045	945	1.102	1.312	1.427	1.516
%	6,4%	5,7%	6,7%	8,0%	8,7%	9,2%
IS	0	1	1	1	1	0
NO	5	4	8	3	8	8
CH	9	4	8	13	18	23

Source: CARE (EU road accidents database) or national publications
Last update: May 2017

Table 38: Number of driver fatalities by month by country (July to December), 2015

	July	August	September	October	November	December	Total
BE	54	61	41	41	56	47	539
BG	45	53	35	52	40	25	436
CZ	55	49	60	38	36	32	458
DK	12	8	13	16	10	13	127
DE	277	257	250	209	175	176	2.484
EE	3	4	1	1	1	2	28
IE	11	10	12	8	8	11	124
EL	58	64	50	44	35	54	545
ES	111	98	123	77	92	85	1.048
FR	245	232	184	233	189	203	2.371
HR	30	28	26	18	19	15	225
IT	287	244	225	184	174	182	2.349
CY	5	3	5	6	2	4	33
LV	7	16	9	7	4	9	85
LT	7	11	6	12	10	8	103
LU	3	2	5	1	3	0	26
HU	37	35	38	41	21	25	353
MT	1	1	0	0	0	0	7
NL	35	41	37	52	30	35	403
AT	40	38	39	19	19	26	332
PL	155	171	148	131	94	112	1.484
PT	34	30	28	26	41	21	363
RO	83	92	90	85	71	74	800
SI	18	12	9	6	7	3	83
SK	23	21	16	17	19	11	170
FI	16	29	20	18	13	10	191
SE	21	19	22	14	7	16	178
UK	107	108	88	93	83	100	1.106
EU	1.780	1.737	1.580	1.449	1.259	1.299	16.451
%	10,8%	10,6%	9,6%	8,8%	7,7%	7,9%	100,0%
IS	0	0	1	0	0	4	9
NO	10	10	9	4	7	8	84
CH	22	21	19	9	11	11	168

Source: CARE (EU road accidents database) or national publications
Last update: May 2017

Table 39: Number of passenger fatalities by month by country (January to June), 2015

	January	February	March	April	May	June
BE	9	6	10	7	10	11
BG	11	15	15	26	22	20
CZ	9	9	13	11	4	10
DK	3	2	2	2	0	1
DE	20	23	30	40	40	46
EE	1	3	0	1	2	0
IE	2	1	1	4	3	2
EL	4	12	12	10	9	15
ES	23	11	20	18	33	21
FR	46	37	34	41	45	43
HR	6	4	4	1	8	3
IT	46	22	29	32	33	38
CY	0	1	0	0	0	1
LV	6	2	1	3	1	5
LT	4	8	0	4	4	4
LU	0	0	0	1	0	0
HU	12	9	7	6	19	19
MT	1	1	0	0	0	1
NL	3	4	3	2	4	2
AT	2	3	8	4	9	2
PL	25	34	36	43	42	49
PT	6	6	2	6	7	15
RO	17	32	23	34	17	37
SI	0	0	2	2	0	4
SK	6	6	5	5	5	4
FI	2	3	3	3	4	5
SE	5	1	5	3	3	3
UK	17	26	17	20	29	20
EU	286	281	282	329	353	381
%	6,5%	6,4%	6,4%	7,5%	8,0%	8,6%
IS	0	0	1	2	1	1
NO	0	2	1	1	1	0
CH	2	0	3	1	6	4

Source: CARE (EU road accidents database) or national publications
Last update: May 2017

Annual Accident Report 2017

Table 40: Number of passenger fatalities by month by country (July to December), 2015

	July	August	September	October	November	December	Total
BE	12	9	3	8	5	3	93
BG	41	27	29	32	15	14	267
CZ	20	14	15	7	9	5	126
DK	2	2	2	5	2	1	24
DE	36	48	39	31	40	37	430
EE	0	4	3	0	0	0	14
IE	6	6	2	1	3	2	33
EL	11	19	8	5	9	6	120
ES	27	41	24	20	20	16	274
FR	64	74	45	94	45	54	622
HR	5	6	12	3	5	5	62
IT	58	58	44	36	29	52	477
CY	3	2	1	0	0	0	8
LV	3	11	1	2	2	3	40
LT	5	7	5	10	2	3	56
LU	0	0	1	0	1	0	3
HU	15	6	14	11	12	12	142
MT	0	0	0	0	1	0	4
NL	6	2	5	0	0	0	31
AT	10	9	4	5	4	3	63
PL	77	41	53	53	43	43	539
PT	7	11	9	4	5	6	84
RO	46	57	53	41	32	55	444
SI	5	2	0	2	0	3	20
SK	8	8	2	14	10	2	75
FI	3	4	1	8	2	5	43
SE	3	4	8	0	3	2	40
UK	30	25	20	23	23	21	271
EU	503	497	403	415	322	353	4.405
%	11,4%	11,3%	9,1%	9,4%	7,3%	8,0%	100,0%
IS	0	1	0	0	0	0	6
NO	4	4	1	2	5	0	21
CH	0	3	6	1	1	0	27

Source: CARE (EU road accidents database) or national publications
Last update: May 2017

Table 41: Number of pedestrian fatalities by month by country (January to June), 2015

	January	February	March	April	May	June
BE	9	10	4	4	7	4
BG	16	13	13	13	29	12
CZ	13	12	5	3	11	8
DK	5	4	0	0	1	3
DE	68	48	36	27	40	36
EE	2	4	0	1	2	0
IE	4	2	3	1	3	0
EL	16	3	9	11	8	13
ES	19	21	28	23	38	30
FR	56	44	27	30	26	25
HR	6	4	2	5	3	2
IT	73	47	42	38	44	42
CY	0	3	1	0	1	2
LV	9	2	4	1	0	2
LT	8	8	5	2	4	2
LU	0	1	1	0	0	2
HU	21	14	11	4	9	7
MT	1	0	0	0	0	0
NL	7	6	6	0	4	3
AT	9	6	8	3	8	2
PL	106	80	73	51	25	33
PT	17	9	12	8	16	10
RO	51	48	44	41	37	33
SI	1	3	2	1	0	1
SK	14	12	8	5	8	6
FI	4	3	2	4	0	0
SE	3	3	6	4	2	8
UK	40	42	29	21	20	27
EU	578	452	381	301	346	313
%	10,5%	8,2%	6,9%	5,5%	6,3%	5,7%
IS	0	0	0	0	0	0
NO	1	1	1	0	2	1
CH	6	5	2	5	5	3

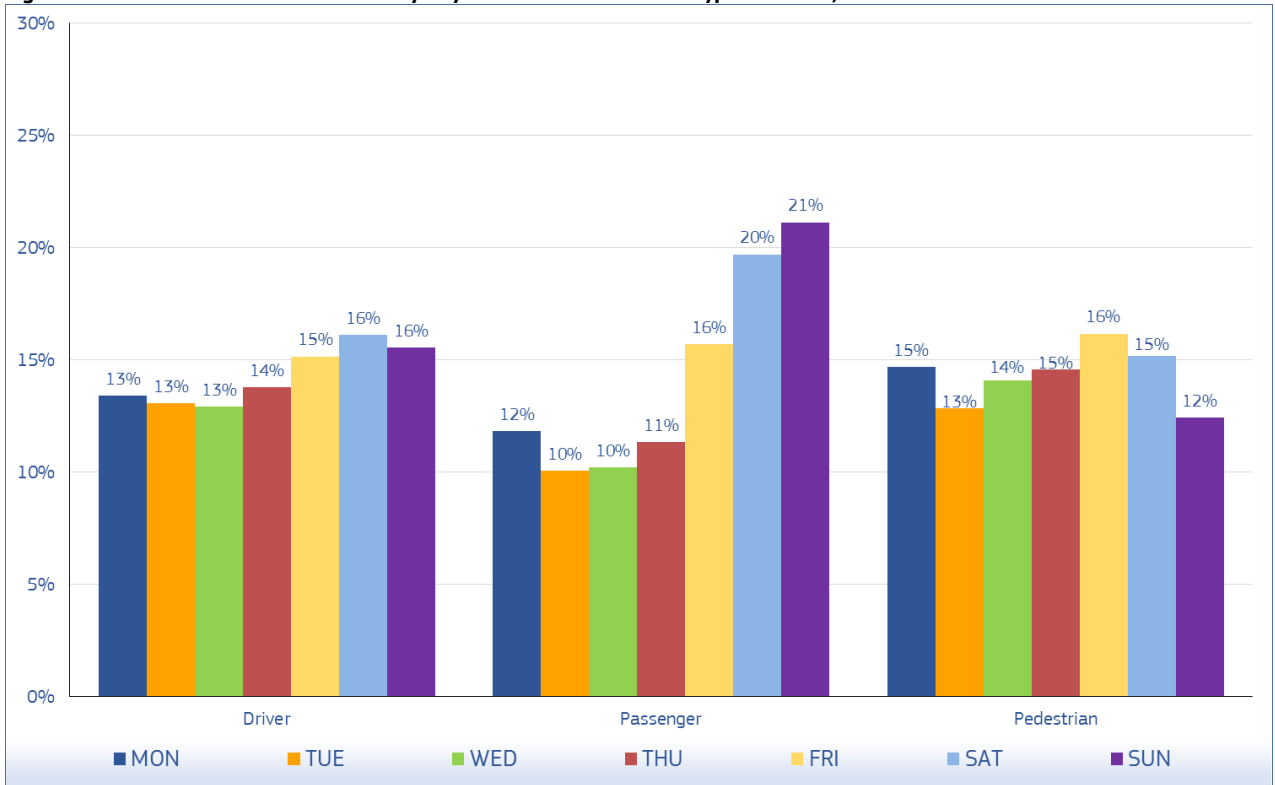
Source: CARE (EU road accidents database) or national publications
Last update: May 2017

Table 42: Number of pedestrian fatalities by month by country (July to December), 2015

	July	August	September	October	November	December	Total
BE	8	7	9	11	9	10	92
BG	14	17	14	22	16	19	198
CZ	13	12	12	26	11	24	150
DK	1	2	1	1	4	5	27
DE	35	30	27	46	79	73	545
EE	0	0	2	0	9	4	24
IE	1	3	3	4	4	3	31
EL	7	13	6	10	16	16	128
ES	36	25	31	33	38	45	367
FR	44	26	28	51	62	47	466
HR	6	5	5	9	7	7	61
IT	49	33	46	67	60	61	602
CY	1	0	2	2	1	3	16
LV	4	3	7	9	11	11	63
LT	1	4	4	7	19	17	81
LU	0	0	1	0	0	2	7
HU	6	11	12	19	12	23	149
MT	1	0	0	0	0	0	2
NL	7	6	2	4	6	9	60
AT	3	6	11	10	11	7	84
PL	34	61	79	88	114	171	915
PT	6	6	16	11	15	20	146
RO	48	38	61	87	69	92	649
SI	3	0	0	3	1	1	16
SK	8	11	14	11	18	11	126
FI	3	5	1	3	5	2	32
SE	3	2	2	1	6	12	52
UK	30	36	29	42	49	62	427
EU	372	362	425	577	652	757	5.516
%	6,7%	6,6%	7,7%	10,5%	11,8%	13,7%	100,0%
IS	0	0	0	1	0	0	1
NO	1	0	1	1	1	2	12
CH	3	5	5	6	5	8	58

Source: CARE (EU road accidents database) or national publications
Last update: May 2017

Figure 23: Total number of fatalities by day of week and road user type in the EU, 2015



Source: CARE (EU road accidents database) or national publications
 Last update: May 2017

Table 43: Total number of fatalities by day of week by country, 2015

	Monday	Tuesday	Wednesday	Thursday	Friday	Saturday	Sunday	Total
BE	86	99	87	80	122	138	120	732
BG	94	94	105	133	161	156	158	901
CZ	85	91	85	119	128	119	107	734
DK	33	27	23	21	28	21	25	178
DE	498	485	491	484	549	477	475	3.459
EE	8	14	8	7	9	12	9	67
IE	29	19	21	25	35	27	32	188
EL	105	95	95	126	92	125	155	793
ES	244	215	209	186	255	300	280	1.689
FR	414	416	424	462	600	564	579	3.459
HR	47	37	47	54	40	69	54	348
IT	494	420	435	456	449	597	577	3.428
CY	5	5	12	9	9	7	10	57
LV	31	27	20	16	22	40	32	188
LT	32	36	25	24	33	51	41	242
LU	3	5	4	4	8	4	8	36
HU	72	76	74	92	110	127	93	644
MT	1	1	2	0	1	2	6	13
NL	72	73	81	79	76	86	64	531
AT	61	62	52	68	94	77	65	479
PL	399	377	348	398	500	477	439	2.938
PT	93	57	74	80	81	103	105	593
RO	278	222	236	271	273	307	306	1.893
SI	14	11	25	20	14	24	12	120
SK	48	52	47	51	54	64	55	371
FI	39	33	44	32	34	49	35	266
SE	36	27	40	42	48	44	33	270
UK	217	230	248	240	265	299	305	1.804
EU	3.538	3.306	3.362	3.579	4.090	4.366	4.180	26.421
%	13,4%	12,5%	12,7%	13,5%	15,5%	16,5%	15,8%	100,0%
IS	3	3	1	2	1	3	3	16
NO	20	13	16	19	18	17	14	117
CH	35	29	27	41	50	35	36	253

Source: CARE (EU road accidents database) or national publications
Last update: May 2017

Annual Accident Report 2017

Table 44: Number of fatalities by day of week by country, 2015 (drivers)

	Monday	Tuesday	Wednesday	Thursday	Friday	Saturday	Sunday	Total
BE	67	76	68	55	97	95	81	539
BG	42	37	50	53	87	77	90	436
CZ	50	65	55	77	80	71	60	458
DK	24	20	17	15	19	15	17	127
DE	369	355	350	349	389	334	338	2.484
EE	5	8	4	2	2	3	4	28
IE	19	16	10	16	26	16	21	124
EL	69	70	65	82	67	89	103	545
ES	146	122	132	121	153	199	175	1.048
FR	300	295	298	333	380	376	389	2.371
HR	32	27	31	34	28	43	30	225
IT	331	287	310	320	312	398	391	2.349
CY	3	3	7	4	6	2	8	33
LV	12	13	9	8	11	19	13	85
LT	13	24	11	13	9	15	18	103
LU	2	3	2	3	5	4	7	26
HU	36	44	46	51	56	65	55	353
MT	1	1	1	0	1	1	2	7
NL	59	58	58	60	50	69	49	403
AT	39	54	37	46	58	50	48	332
PL	204	198	173	213	257	235	204	1.484
PT	50	34	44	46	48	69	72	363
RO	110	97	100	126	112	136	119	800
SI	9	6	16	13	9	19	11	83
SK	17	30	27	25	19	27	25	170
FI	30	24	33	21	25	34	24	191
SE	24	23	24	26	29	28	24	178
UK	141	159	149	155	158	164	180	1.106
EU	2.204	2.149	2.127	2.267	2.493	2.653	2.558	16.451
%	13,4%	13,1%	12,9%	13,8%	15,2%	16,1%	15,5%	100,0%
IS	2	2	1	0	0	2	2	9
NO	16	10	11	12	10	13	12	84
CH	20	17	18	31	33	26	23	168

Source: CARE (EU road accidents database) or national publications
Last update: May 2017

Table 45: Number of fatalities by day of week by country, 2015 (passengers)

	Monday	Tuesday	Wednesday	Thursday	Friday	Saturday	Sunday	Total
BE	7	12	5	11	11	22	25	93
BG	31	30	29	29	50	58	40	267
CZ	6	10	11	23	20	30	26	126
DK	3	1	4	1	5	5	5	24
DE	54	51	47	45	83	73	77	430
EE	0	3	1	0	3	5	2	14
IE	7	1	3	3	5	8	6	33
EL	13	12	14	20	8	20	33	120
ES	37	39	23	23	37	56	59	274
FR	47	55	59	57	142	124	138	622
HR	8	6	4	10	8	16	10	62
IT	60	57	46	54	50	86	124	477
CY	0	0	3	2	1	1	1	8
LV	8	3	7	2	4	8	8	40
LT	7	2	4	5	7	17	14	56
LU	0	0	2	0	1	0	0	3
HU	19	8	11	20	25	34	25	142
MT	0	0	0	0	0	1	3	4
NL	3	5	6	4	5	3	5	31
AT	11	3	3	9	17	11	9	63
PL	60	62	59	68	71	108	111	539
PT	16	6	9	12	10	17	14	84
RO	71	38	48	49	65	71	102	444
SI	5	2	4	2	2	4	1	20
SK	10	6	5	11	13	15	15	75
FI	4	5	6	5	4	12	7	43
SE	2	2	5	6	9	9	7	40
UK	32	24	32	29	36	54	64	271
EU	521	443	450	500	692	868	931	4.405
%	11,8%	10,1%	10,2%	11,4%	15,7%	19,7%	21,1%	100,0%
IS	1	1	0	2	1	0	1	6
NO	2	2	4	4	6	1	2	21
CH	2	3	1	3	4	7	7	27

Source: CARE (EU road accidents database) or national publications
Last update: May 2017

Table 46: Number of fatalities by day of week by country, 2015 (pedestrians)

	Monday	Tuesday	Wednesday	Thursday	Friday	Saturday	Sunday	Total
BE	12	8	12	14	12	20	14	92
BG	21	27	26	51	24	21	28	198
CZ	29	16	19	19	28	18	21	150
DK	6	6	2	5	4	1	3	27
DE	75	79	94	90	77	70	60	545
EE	3	3	3	5	4	4	2	24
IE	3	2	8	6	4	3	5	31
EL	23	13	16	24	17	16	19	128
ES	61	54	54	42	65	45	46	367
FR	67	66	67	72	78	64	52	466
HR	7	4	12	10	4	10	14	61
IT	103	76	79	82	87	113	62	602
CY	2	2	2	3	2	4	1	16
LV	11	11	4	6	7	13	11	63
LT	12	10	10	6	16	18	9	81
LU	1	2	0	1	2	0	1	7
HU	17	24	17	21	29	28	13	149
MT	0	0	1	0	0	0	1	2
NL	7	8	12	7	11	9	6	60
AT	11	5	12	13	19	16	8	84
PL	135	117	116	117	172	134	124	915
PT	27	17	21	22	23	17	19	146
RO	97	87	88	96	96	100	85	649
SI	0	3	4	5	3	1	0	16
SK	21	16	15	15	22	22	15	126
FI	5	4	5	6	5	3	4	32
SE	10	2	11	10	10	7	2	52
UK	44	47	67	56	71	81	61	427
EU	810	709	777	804	892	838	686	5.516
%	14,7%	12,9%	14,1%	14,6%	16,2%	15,2%	12,4%	100,0%
IS	0	0	0	0	0	1	0	1
NO	2	1	1	3	2	3	0	12
CH	13	9	8	7	13	2	6	58

Source: CARE (EU road accidents database) or national publications
Last update: May 2017

Table 47: Number of fatalities by hour of day (00-08) by country, 2015

	00	01	02	03	04	05	06	07	08
BE	21	24	12	25	24	34	37	24	23
BG	5	51	20	12	28	23	30	24	36
CZ	6	12	12	10	14	23	38	27	27
DK	6	5	5	2	1	8	9	7	8
DE	64	66	46	56	52	82	136	115	128
EE	0	1	1	0	2	4	2	2	4
IE	6	7	10	5	5	3	5	4	5
EL	13	28	24	20	18	23	55	36	30
ES	32	27	23	23	35	48	51	73	72
FR	98	96	82	99	79	86	108	202	140
HR	16	3	8	5	13	10	9	9	12
IT	94	108	100	90	85	72	91	126	132
CY	2	2	2	3	1	2	2	3	2
LV	3	6	2	4	2	6	2	13	6
LT	7	3	8	3	4	2	6	8	5
LU	0	2	1	0	0	0	0	5	3
HU	12	13	14	12	12	25	32	22	37
MT	0	0	0	2	2	0	1	1	0
NL	13	5	12	9	13	11	15	21	18
AT	7	7	9	10	13	21	15	22	17
PL	50	41	50	34	66	106	129	112	82
PT	17	11	7	11	9	16	19	27	32
RO	63	51	43	30	52	50	73	67	75
SI	5	5	3	3	2	3	2	6	4
SK	7	4	7	8	13	10	24	11	16
FI	5	7	4	10	12	4	9	5	9
SE	4	6	7	2	4	3	4	4	8
UK	74	44	53	38	27	35	48	64	59
EU	630	635	565	526	588	710	952	1.040	990
%	2,4%	2,4%	2,1%	2,0%	2,2%	2,7%	3,6%	3,9%	3,7%
IS	0	0	0	0	0	0	1	0	0
NO	6	2	4	6	1	7	5	1	4
CH	10	7	3	7	3	8	7	6	14

Source: CARE (EU road accidents database) or national publications

Last update: May 2017

Annual Accident Report 2017

Table 48: Number of fatalities by hour of day (09-16) by country, 2015

	09	10	11	12	13	14	15	16
BE	23	25	29	28	42	34	56	50
BG	30	44	40	27	31	39	57	58
CZ	28	31	40	44	47	57	32	75
DK	7	4	7	7	10	15	13	17
DE	136	168	198	186	189	248	246	269
EE	1	0	1	7	1	3	2	7
IE	4	5	9	9	9	16	9	11
EL	31	29	34	28	40	37	31	54
ES	69	80	90	109	123	76	70	90
FR	140	138	140	135	148	171	207	242
HR	13	12	14	10	7	19	20	30
IT	149	172	171	180	177	150	163	182
CY	3	3	0	2	1	3	5	2
LV	5	2	7	5	13	6	12	19
LT	6	8	12	13	15	8	4	15
LU	0	1	0	3	1	3	2	1
HU	48	28	31	27	30	27	23	40
MT	1	0	1	1	0	0	0	0
NL	25	32	26	30	29	42	46	31
AT	22	22	35	22	25	36	38	28
PL	99	113	105	121	125	170	134	211
PT	29	24	40	24	15	37	41	28
RO	77	79	64	81	86	92	92	84
SI	9	5	10	9	5	6	4	8
SK	16	6	20	14	16	21	17	22
FI	16	13	15	24	18	15	14	22
SE	14	14	18	21	21	21	23	22
UK	47	83	107	95	92	96	110	129
EU	1.048	1.141	1.264	1.262	1.316	1.448	1.471	1.747
%	4,0%	4,3%	4,8%	4,8%	5,0%	5,5%	5,6%	6,6%
IS	1	1	0	1	2	1	1	5
NO	3	8	6	3	6	11	6	7
CH	13	11	10	17	10	17	23	15

Source: CARE (EU road accidents database) or national publications
Last update: May 2017

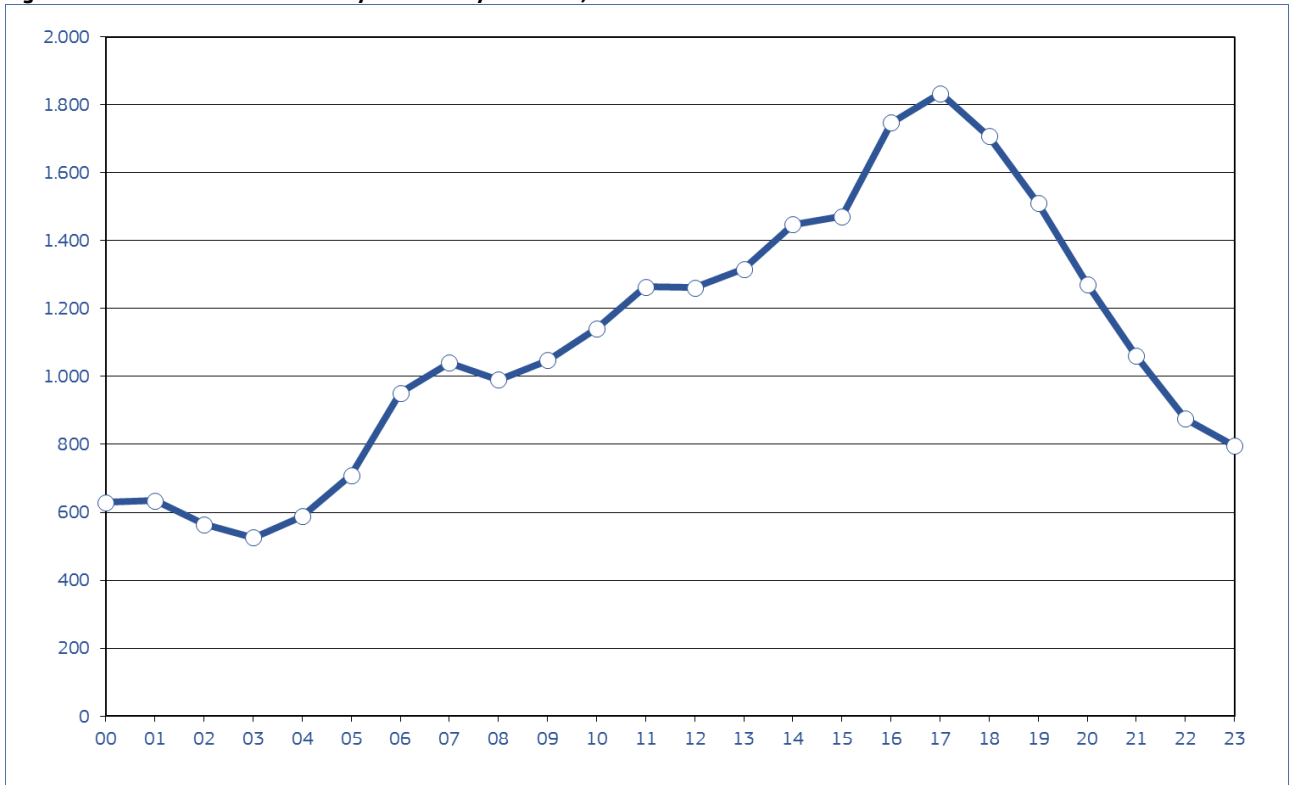
Table 49: Number of fatalities by hour of day (17-24) by country, 2015

	17	18	19	20	21	22	23	Un- known	Total
BE	39	38	27	31	20	30	32	4	732
BG	58	72	47	45	45	46	33	0	901
CZ	50	32	35	27	18	22	17	10	734
DK	13	6	7	10	3	4	4	0	178
DE	274	207	178	151	98	94	72	0	3.459
EE	6	3	5	8	1	2	4	0	67
IE	13	10	10	8	14	6	5	0	188
EL	31	40	42	46	42	33	28	0	793
ES	92	112	110	92	79	49	64	0	1.689
FR	255	227	186	157	119	103	101	0	3.459
HR	28	24	14	18	22	17	15	0	348
IT	193	240	220	174	137	114	106	2	3.428
CY	5	2	3	2	4	1	2	0	57
LV	15	18	14	9	5	3	7	4	188
LT	36	31	19	7	14	3	5	0	242
LU	2	3	2	3	2	2	0	0	36
HU	44	42	30	35	26	20	14	0	644
MT	0	0	1	0	1	1	1	0	13
NL	37	28	27	13	15	14	19	0	531
AT	39	15	25	18	14	12	7	0	479
PL	263	221	194	164	147	115	86	0	2.938
PT	26	52	42	25	23	13	25	0	593
RO	133	130	134	105	98	72	62	0	1.893
SI	3	9	7	6	4	2	0	0	120
SK	27	32	22	19	13	9	13	4	371
FI	11	12	10	8	11	7	5	0	266
SE	13	12	11	4	9	6	10	9	270
UK	128	90	88	87	76	75	59	0	1.804
EU	1.834	1.708	1.510	1.272	1.060	875	796	33	26.421
%	6,9%	6,5%	5,7%	4,8%	4,0%	3,3%	3,0%	0,1%	100,0%
IS	1	0	0	1	0	1	0	0	16
NO	12	5	6	3	2	2	1	0	117
CH	26	15	8	3	8	5	7	0	253

Source: CARE (EU road accidents database) or national publications
Last update: May 2017

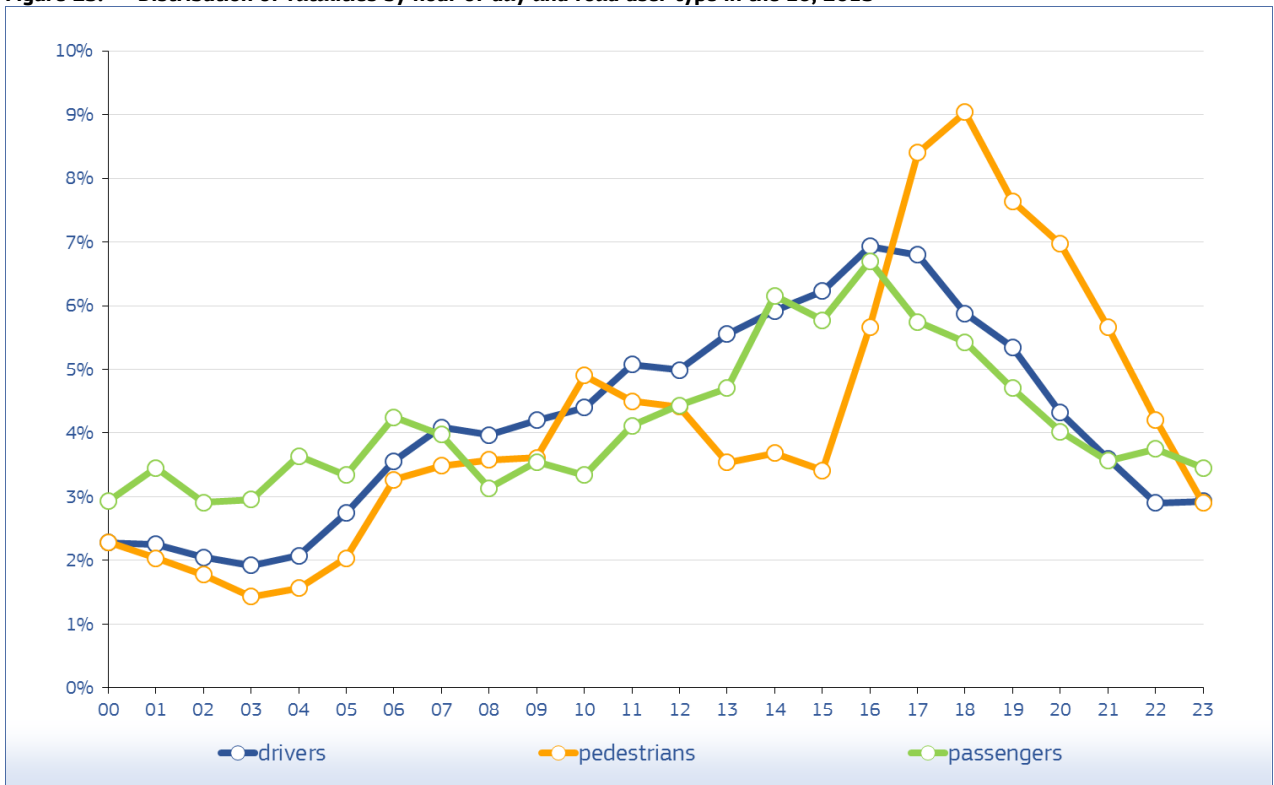
Annual Accident Report 2017

Figure 24: Number of fatalities by hour of day in the EU, 2015



Source: CARE (EU road accidents database) or national publications
 Last update: May 2017

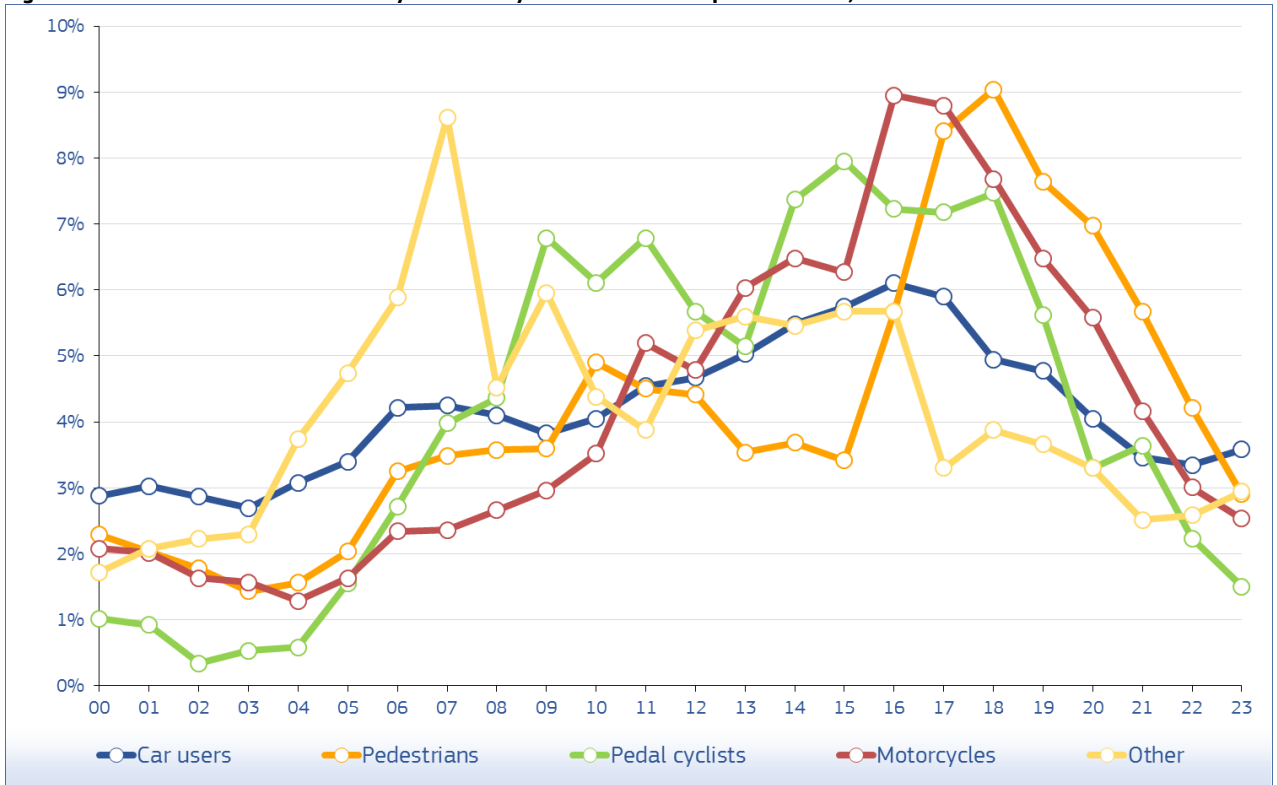
Figure 25: Distribution of fatalities by hour of day and road user type in the EU, 2015



Source: CARE (EU road accidents database) or national publications
 Last update: May 2017

Annual Accident Report 2017

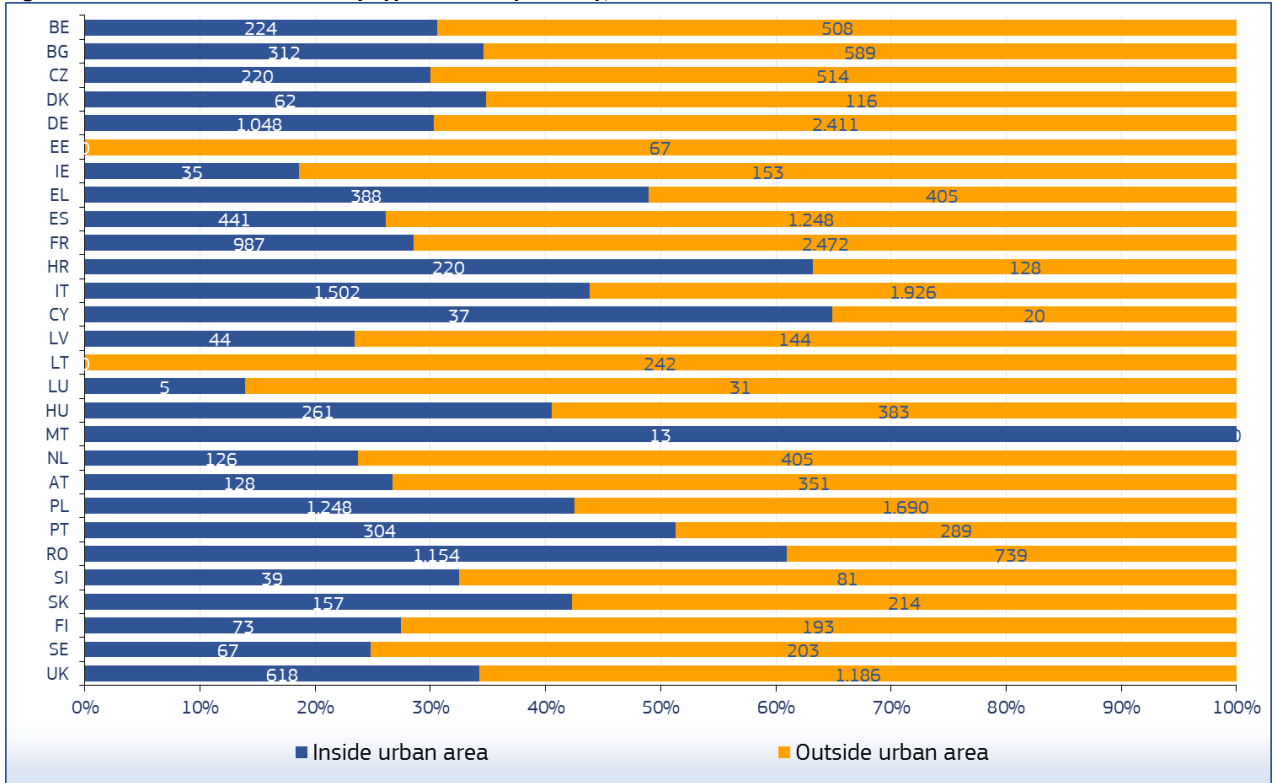
Figure 26: Distribution of fatalities by hour of day and mode of transport in the EU, 2015



Source: CARE (EU road accidents database) or national publications
 Last update: May 2017

4.3.2 Type of area/road

Figure 27: Number of fatalities by type of area by country, 2015



Source: CARE (EU road accidents database) or national publications
 Last update: May 2017

Table 50: Number of fatalities by type of area and road by country, 2015

	Inside urban area	Outside urban area			Total
		motorway	no motorway	unknown	
BE	224	108	395	5	732
BG	312	36	553	-	901
CZ	220	31	483	-	734
DK	62	16	0	-	178
DE	1.048	414	1.997	-	3.459
EE	-	-	-	67	67
IE	35	8	145	-	188
EL	388	53	352	-	793
ES	441	277	971	-	1.689
FR	987	297	2.175	-	3.459
HR	220	16	112	-	348
IT	1.502	305	1.621	-	3.428
CY	37	6	14	-	57
LV	44	-	144	-	188
LT	-	-	-	242	242
LU	5	3	28	-	36
HU	261	34	349	-	644
MT	13	-	0	-	13
NL	126	79	305	21	531
AT	128	41	310	-	479
PL	1.248	61	1.629	-	2.938
PT	304	61	228	-	593
RO	1.154	19	720	-	1.893
SI	39	15	66	-	120
SK	157	14	200	-	371
FI	73	6	187	-	266
SE	67	31	158	14	270
UK	618	93	1.093	-	1.804
EU	9.713	2.024	14.335	349	26.421
%	36,8%	7,7%	54,3%	1,3%	100,0%
IS	3	-	13	-	16
NO	22	-	95	0	117
CH	119	21	113	-	253

Source: CARE (EU road accidents database) or national publications
Last update: May 2017

4.3.3 Type of junction

Table 51: Number of fatalities by type of junction by country, 2015

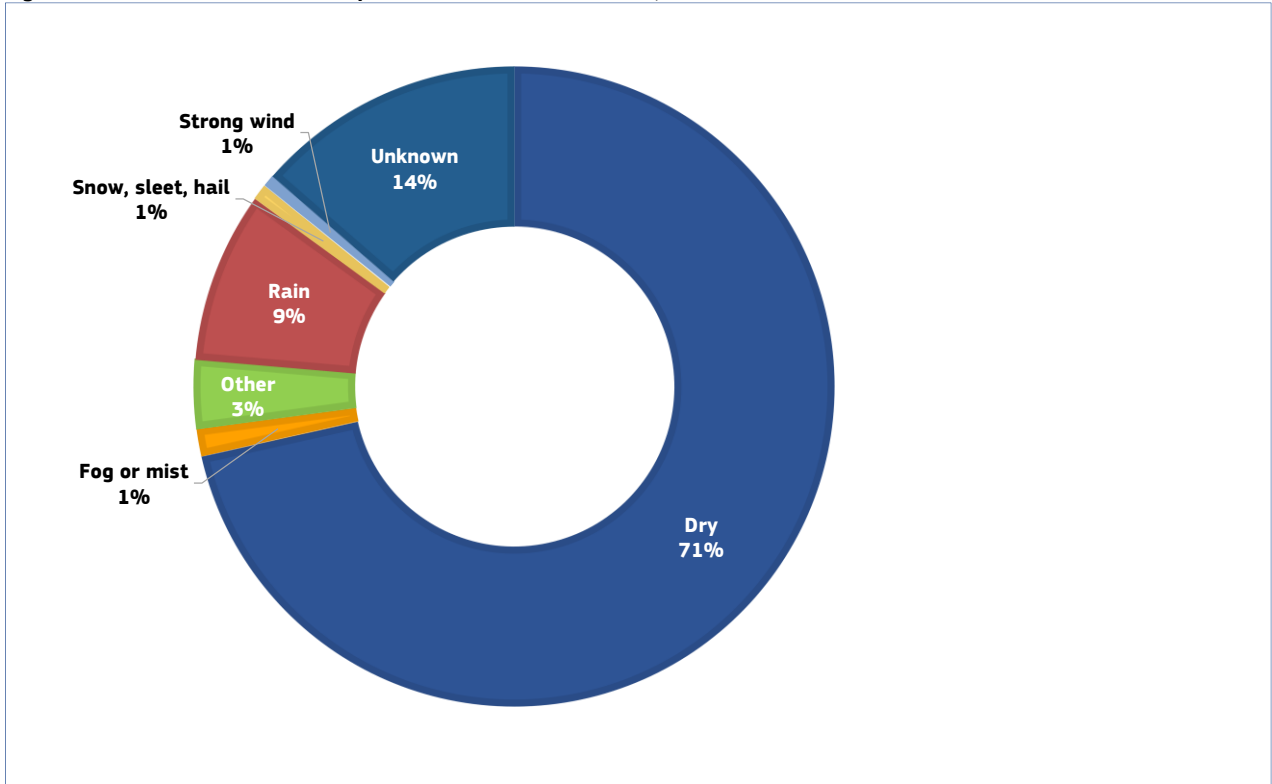
	Not at a junction	Junction Type					other	Unknown	Total
		at-grade - crossroad	at-grade - multiple junction	at-grade - roundabout	at-grade - T or staggered junction	not at grade (interchange)			
BE	580	-	-	6	-	-	97	45	728
BG	782	102	-	-	-	17	-	-	901
CZ	603	51	-	4	52	0	2	-	712
DK	123	26	-	1	26	0	2	-	178
DE	2.661	-	-	-	-	-	-	798	3.459
EE	-	-	-	-	-	-	49	18	67
IE	0	17	-	2	21	-	0	148	188
EL	729	-	-	-	-	-	-	64	793
ES	1.332	107	0	60	145	-	42	-	1.686
FR	2.965	179	6	60	171	-	59	-	3.440
HR	297	22	-	1	18	-	0	7	345
IT	2.665	296	-	54	413	-	-	-	3.428
CY	29	2	-	0	19	-	7	-	57
LV	165	-	-	-	-	-	23	-	188
LT	214	-	-	-	-	-	-	28	242
LU	35	0	0	0	1	0	-	-	36
HU	508	83	0	4	48	-	1	-	644
MT	0	-	-	-	-	-	-	13	13
NL	367	132	-	6	-	-	0	15	520
AT	396	49	-	2	4	-	6	-	457
PL	2.461	-	-	7	-	-	429	-	2.897
PT	483	27	-	9	53	14	3	4	593
RO	1.691	181	-	-	-	-	-	-	1.872
SI	113	-	-	0	-	-	-	6	119
SK	324	17	-	2	25	-	0	3	371
FI	218	-	-	1	-	-	-	40	259
SE	0	-	-	-	-	-	-	270	270
UK	1.162	96	7	55	353	-	131	0	1.804
EU	20.903	1.387	13	274	1.349	31	851	1.459	26.267
%	79,6%	5,3%	0,0%	1,0%	5,1%	0,1%	3,2%	5,6%	100,0%
IS	15	1	-	0	0	0	-	-	16
NO	-	-	-	-	-	-	-	117	117
CH	-	18	-	-	23	-	-	212	253

Source: CARE (EU road accidents database) or national publications

Last update: May 2017

4.3.4 Weather conditions

Figure 28: Number of fatalities by weather conditions in the EU, 2015



Source: CARE (EU road accidents database) or national publications
Last update: May 2017

Table 52: Number of fatalities by weather conditions by country, 2015

	Dry	Fog or mist	Other	Rain	Snow, sleet, hail	Strong wind	Unknown	Total
BE	571	6	2	89	2	7	55	732
BG	784	13	-	87	17	0	-	901
CZ	612	19	14	79	7	3	0	734
DK	149	1	5	18	0	2	3	178
DE	0	11	55	0	0	9	3.384	3.459
EE	64	0	0	3	0	0	0	67
IE	142	2	1	40	0	2	1	188
EL	691	2	12	82	1	5	0	793
ES	1.526	22	0	91	4	13	33	1.689
FR	2.987	40	25	376	15	16	0	3.459
HR	298	5	1	43	1	0	0	348
IT	2.879	77	230	227	6	9	0	3.428
CY	54	0	1	2	0	0	0	57
LV	166	0	0	17	5	0	0	188
LT	200	0	0	21	15	2	4	242
LU	28	1	0	7	0	0	0	36
HU	565	22	1	47	8	1	0	644
MT	9	0	-	0	0	1	3	13
NL	443	7	0	53	1	3	24	531
AT	407	7	0	53	9	3	0	479
PL	1.886	54	546	364	53	35	0	2.938
PT	509	6	0	75	0	2	1	593
RO	1.635	40	0	193	22	3	0	1.893
SI	110	0	0	9	1	0	0	120
SK	291	5	8	47	16	1	3	371
FI	216	2	0	22	14	0	12	266
SE	199	11	-	17	13	-	30	270
UK	1.468	16	16	212	3	51	38	1.804
EU	18.889	369	917	2.274	213	168	3.591	26.421
%	71,5%	1,4%	3,5%	8,6%	0,8%	0,6%	13,6%	100,0%
IS	10	0	0	2	0	0	4	16
NO	61	4	23	13	4	0	12	117
CH	221	0	9	21	2	0	0	253

Source: CARE (EU road accidents database) or national publications
Last update: May 2017

5 Glossary

The CARE glossary provides short definitions for variables used in the Annual Statistical Report, and includes short definitions of CARE common values.

The glossary has two components:

- a) A **definition** of the common value
- b) The **availability** of the common value in the data file for each Member State.

ACCIDENT

ACCIDENT

Definition: Occurs on a public road. Occurs on a private road to which the public has right of access (except BE, NL, PT). Involves at least one moving vehicle (except UK, PT). Involves at least one injured or killed person. Is reported by the police. Self reporting possible (BE, UK, EL, IT, IE). Self reporting not possible (DK, FI, NL, AT, PT). Confirmed suicides excluded (BE, UK, IE, NL, AT, DK, PT). Confirmed suicides included (ES, IT, LU).

Note: The variation in the groups of road and the coverage of the injury categories included in injury accidents, together with differences in the level of self reported accidents, will lead to significant variations in the number of injury accidents reported, and their reporting rate, between Member States.

FATAL ACCIDENT

Definition: Accident with at least one killed person regardless the injury severity of any other involved persons.

Note: See “killed” definition from Injury Severity defined in Person type item (Death within 30 days of a road accident [UN/ECE Geneva 1995 – Statistics of Road Traffic Accidents in Europe and North America], except AT [3 days before 1992], ES [24 hours in CARE; 24 hours before 1993 in publication], FR [6 days], EL [24 hours], IT [7 days], PT [24 hours]. Suicide not included [except DK, ES, FR]. Natural death not included [except LU, SE]).

Data availability: All countries

TIME TYPE ITEMS

MONTH

Definition: Calendar month

Data availability: All countries (except DK)

HOURLY

Definition: Period of 60 minutes. Rounded down to whole hours (except EL, ES, IT: rounded to nearest hour).

Note: Winter time is:

- GMT from November to March (DE from 1996 onwards, GB, IE, NI, PT)
- GMT +1 hour from October to March (BE, AT, DK prior to 1996, DK, ES, FR, IT, LU, NL, SE)
- GMT +2 hours from October to March (EL, FI).

Summer time is one hour ahead of winter time:

- GMT +1 hour from April to October (DK from 1996 onwards, GB, IE, NI, PT)
- GMT +2 hours from April to September (AT, BE, DK prior to 1996, DK, ES, FR, IT, LU, NL, SE)
- GMT +3 hours from April to September (EL, FI)

For PT, unknown hour coded as '12' during daytime and '0' during night time

Data availability: All countries (except DK)

DAY OF WEEK

Definition: 24 hour day within 7 day week.

Note: Data calculated by the CARE system from the date of accident, where data is not available in national files (AT from 1992 onwards, BE, FR prior to 1993, PT, SE).

Data availability: All countries.

ROAD USER TYPE

DRIVER

Definition: Person driving or riding any motorised vehicle or pedal cycle. Person herding animals is not a driver (except BE, AT). Learner driver is a driver (except ES, PT). Learner driver is a driver during a driving test, but not in a driving lesson (DK). Driving instructor is not a driver (except ES, PT). Driving instructor is a driver during a driving lesson, but not during a driving test (DK).

Note: Uninjured drivers are included in the database (except GB, NI, NL: implicitly included in vehicle records only). Data on driving instructors and learner drivers collected separately from 1993 onwards (SE).

Data availability: All countries.

PASSENGER

Definition: Person on or in a vehicle, who is not the driver. Includes person in the act of boarding or alighting from a vehicle (except DK). Learner driver is not a passenger (except ES, PT). Learner driver is a passenger during a driving lesson, but not during a driving test (DK). Driving instructor is a passenger (except ES, PT). Driving instructor is a passenger during a driving test, but not in a driving lesson (DK).

Note: Uninjured passengers not included in the database (except FR, IE, LU; ES, FI in some cases, AT).

Data availability: All countries.

PEDESTRIAN

Definition: Person on foot. Person pushing or holding bicycle (except DK). Person pushing a pram or pushchair. Person leading or herding an animal (except DK, AT). Person riding a toy cycle on the footway (except AT). Person on roller skates, skateboard or skis (except AT). Does not include person in the act of boarding or alighting from a vehicle (except DK, ES).

Note: Uninjured pedestrians not included in the database (except BE, IE, LU, NL implicitly included in element records; DK, FR, FI, AT, SE if they caused the accident; ES not consistently).

Data availability: All countries.

TYPE OF INJURY

INJURED

Definition: Injured with application of correcting coefficient as stated for the 'Killed at 30 days'. Injured in a road accident. Hospitalisation or medical treatment not necessarily required (except FR). Self declaration of injury (DK if slight; FI, GB, IT, IE, NI). Opinion of the police. Aggregation of the following injury severities: SERIOUSLYINJUREDASREPORTED + SLIGHTLY INJURED + INJURED - 1 COEFFICIENT

Data availability: All countries

FATALITIES

Definition: Death within 30 days of a road accident (UN/ECE Geneva 1995 – Statistics of Road Traffic Accidents in Europe and North America, annex 1). Suicide not included (except DK, ES, FR). Natural death not included (except LU, SE). Corrective factors have been applied to comply with this international definition for the following countries: EL (24 hours), ES (24 hours in CARE; 24 hours before 1993 in publication), FR (6 days), IT (7 days), AT (3 days before 1992), PT (24 hours).

Data availability: All countries.

Member State	Correcting factors		
Greece	K(30) = K * 1,18 up to 1995		
Spain	K(30) = K * 1,3 up to 1992		
	1993 up to 1996:	Outside urban area	Inside urban area
	Driver	K(30)=K+SI*2,46%	K(30)=K+SI*1,02%
	Passenger	K(30)=K+SI*2,29%	K(30)=K+SI*0,94%
	Pedestrian	K(30)=K+SI*7,22%	K(30)=K+SI*3,87%
	1997 up to 2000:	Outside urban area	Inside urban area
	Driver	K(30)=K+SI*2,44%	K(30)=K+SI*1,93%
	Passenger	K(30)=K+SI*2,17%	K(30)=K+SI*1,80%
	Pedestrian	K(30)=K+SI*4,76%	K(30)=K+SI*5,71%
	2001 up to 2004:	Outside urban area	Inside urban area
	Driver	K(30)=K+SI*2,41%	K(30)=K+SI*2,17%
	Passenger	K(30)=K+SI*2,24%	K(30)=K+SI*2,15%
Pedestrian	K(30)=K+SI*6,17%	K(30)=K+SI*4,34%	
France	K(30) = K * 1,09 up to 1993 K(30) = K * 1,057 from 1994 onwards		
Italy	K(30) = K * 1,078		
Austria	K(30) = K * 1,12 only for 1991		
Portugal	K(30) = K * 1,3 up to 1997 K(30) = K * 1,14 from 1998 onwards		
K: number of persons killed, SI: number of persons seriously injured			

GENDER

FEMALE

Definition: Determined by the police (except ES, IT, LU, AT, PT: on the basis of identity documents; DK, FI, SE: on the basis of personal ID number).

Data availability: All countries.

MALE

Definition: Determined by the police (except ES, IT, LU, AT, PT: on the basis of identity documents; DK, FI, SE: on the basis of personal ID number).

Data availability: All countries.

AGE

AGE

Definition: Length of life of person. Rounded down to whole number of years (except EL, IT, NI: rounded to nearest year).

Note: Age 0 to 1 is exceptionally rounded up (FR, IT, IE, LU, NI, PT). Age over 99 only available for ES, FR (1993 on), NL.

Data availability: All countries.

AREA TYPE

INSIDE URBAN AREA

Definition: Area inside urban area boundary signs (except IE, UK). Includes dual carriageways and national roads. Can include motorways (except DK, EL, IT). Opinion of the police (DK, SE).

Note: Data approximated from speed limit of 40 mph or less (IE, UK).

Data availability: All countries.

OUTSIDE URBAN AREA

Definition: Area outside urban area boundary signs. Opinion of the police (DK, SE). Includes motorways.

Note: Data approximated from speed limit of over 40 mph (IE, UK).

Data availability: All countries.

MOTORWAY

Definition: Public road with dual carriageways, and at least two lanes each way. Entrance and exit signposted. Road with grade separated interchanges. Road with a central barrier or central reservation. No crossing permitted. No stopping permitted unless in an emergency. Entry prohibited for pedestrians, animals, pedal cycles, mopeds, agricultural vehicles; learner drivers (BE, GB, EL, IE, NI, PT). Access restricted to motor vehicles (DK, FI, AT). Minimum speed between 50 km/h and 80 km/h (except FR, UK). Maximum speed between 100 km/h and 130 km/h (except DK recommended 130 km/h).

Data availability: All countries.

MODES OF TRANSPORT-VEHICLE GROUP

AGRICULTURAL TRACTOR

Definition: Motor vehicle for agricultural use, with wheels or caterpillar tracks, with at least two axles. Driving licence required (DK, EL, ES, FI, GB, IT, IE, LU, AT; not in FR). Maximum speed 30 km/h or 40 km/h.

Data availability: All countries (except DK prior to 1997, AT, FR, GB, IE from 1996 onwards, LU).

Value included in another value:

agricultural machine (FR), construction or agricultural machine (DK, AT prior to 1997), agricultural or industrial tractor (LU), other motor vehicle (GB), other (IE from 1996 onwards).

BUS OR COACH

Definition:

Motor vehicle with at least four wheels, used for transporting people. Public or private use. Type D driving licence required (BE, GB, IE, NI). Includes bus, more than 8 and 16 seats, minibus, trolley-bus (except LU), scheduled bus, unscheduled bus, school bus.

Data availability:

All countries.

CAR OR TAXI

Definition:

Includes car, taxi. Motor vehicle with four wheels. Used to transport only or mainly people. Seating for no more than 8 passengers. Type B driving licence required. Includes taxi-bus (NL).

Data availability:

All countries.

HEAVY GOODS VEHICLE

Definition:

Includes road tractor, road tractor with semi trailer, lorry over 3,5 tonnes. Motor vehicle with at least four wheels, with a permissible gross vehicle weight of over 3,5 tonnes, used only for the transport of goods. With or without a trailer. Type C driving licence required. Includes lorry, over 3,5 tonnes ; road tractor ; road tractor with semi-trailer ; lorry with trailer ; tanker (except FI).

Note:

Lorries cannot systematically be categorised as over 3,5 tonnes (DK, IT).

Data availability:

All countries (except DE, IT).

LORRY, LESS THAN 3,5 TONNES

Definition:

Motor vehicle with a permissible gross vehicle weight of less than 3,5 tonnes, used only for the transport of goods. Type B driving licence required.

Note:

Lorries cannot systematically be categorised as less than 3,5 tonnes (DK, IT).

Data availability:

All countries (except DK, IT, LU).

MOPED

Definition:

Motor vehicle with two wheels, with an engine size of less than 50 cc. Design speed between 25 km/h and 50 km/h. One or two seats. Minimum age for driver between 14 and 18 (except IT). No driving licence required (ES, FR, FI, GB, IT, PT, SE). Unregistered vehicle (BE, DK, ES, FR, SE).

Data availability:

All countries (except IE from 1996 onwards).

Value included in another value:

Two wheeled motor vehicle (IE from 1996 onwards).

MOTORCYCLE

Definition:

Motor vehicle with two or three wheels (not three wheeled in DK), with an engine size of more than 50 cc. With a trailer possible (except DK). With a sidecar possible. Registered vehicle (except PT). Type A driving licence required. Includes motor scooter (except FR).

Data availability:

All countries (except IE from 1996 onwards).

Value included in another value: two wheeled motor vehicle (IE from 1996 onwards).

OTHER VEHICLE

Definition: Includes other non-motor vehicle, other motor vehicle.

PEDAL CYCLE

Definition: Vehicle with at least two wheels, without engine, moved by pedals or hand cranks. With or without a trailer. With or without passengers. Ridden in the carriageway. Ridden on the pavement (except DK, LU).

Data availability: All countries.

PEDESTRIAN

Definition: Wherever a person's person class has been identified as being pedestrian, its vehicle type is "pedestrian". This as opposed to older version of CARE where a pedestrian didn't have a vehicle type.

Data availability: All countries.

JUNCTION TYPE

JUNCTION

Definition: Road intersection with three or more arms. Not grade separated. Includes t junction, y junction, crossroad, level crossing (except DK, FI, GB, NI), roundabout (except FR), multiple junction.

Data availability: All countries (except EL).

CROSSROAD

Definition: Road intersection with four arms. Opinion of the police (DK, ES, FI; not AT).

Data availability: All countries (except BE, EL).

NOT AT A JUNCTION

Definition: Position on road more than 20m from a junction or roundabout (GB, IE, NI, NL, AT). Position on road more than 50m from a junction (FR). Opinion of the police (BE, DK, ES, FI, IT, LU, SE).

Data availability: All countries (except EL).

ROUNDABOUT

Definition: Circular highway. Includes sections of the road leading into it, within 20m (GB, IE, NI, AT). Opinion of the police (DK, ES, FR, IT).

Data availability: All countries (except BE, DK, EL, FI, LU, PT).

T OR Y JUNCTION

Definition: Road intersection with three arms. Includes t junction, y junction, staggered junction.

Data availability: All countries (except BE, EL, FI, IT, PT).

6 List of tables

Table 1:	Annual number of injury accidents by country, 2006-2015	7
Table 2:	Annual number of fatalities by country, 2006-2015	10
Table 3:	Annual number of fatal accidents by country, 2006-2015	13
Table 4:	Annual number of pedestrian fatalities by country, 2006-2015	17
Table 5:	Annual number of pedal cyclist rider and passenger fatalities by country, 2006-2015	18
Table 6:	Annual number of moped rider and passenger fatalities by country, 2006-2015	19
Table 7:	Annual number of motorcycle rider and passenger fatalities by country, 2006-2015	20
Table 8:	Annual number of car and taxi driver and passenger fatalities by country, 2006-2015	22
Table 9:	Annual number of heavy goods vehicles >3,5t fatalities by country, 2006-2015	23
Table 10:	Annual number of lorries <3,5t fatalities by country, 2006-2015	24
Table 11:	Annual number of buses or coaches fatalities by country, 2006-2015	25
Table 12:	Annual number of fatalities by age group by country, 2006-2007	28
Table 13:	Annual number of fatalities by age group by country, 2008-2009	29
Table 14:	Annual number of fatalities by age group by country, 2010-2011	30
Table 15:	Annual number of fatalities by age group by country, 2012-2013	31
Table 16:	Annual number of fatalities by age group by country, 2014-2015	32
Table 17:	Annual number of female fatalities by country, 2006-2015	33
Table 18:	Annual number of male fatalities by country, 2006-2015	34
Table 19:	Annual number of female fatalities as drivers by country, 2006-2015	36
Table 20:	Annual number of male fatalities as drivers by country, 2006-2015	37
Table 21:	Annual number of female fatalities as passengers by country, 2006-2015	38
Table 22:	Annual number of male fatalities as passengers by country, 2006-2015	39
Table 23:	Annual number of female fatalities as pedestrians by country, 2006-2015	40
Table 24:	Annual number of male fatalities as pedestrians by country, 2006-2015	41
Table 25:	Number of total fatalities by age group by country, 2015	42
Table 26:	Number of female fatalities by age group by country, 2015	43
Table 27:	Number of male fatalities by age group by country, 2015	44
Table 28:	Number of pedestrian fatalities by age group by country, 2015	45
Table 29:	Number of pedal cyclist fatalities by age group by country, 2015	46
Table 30:	Number of moped rider and passenger fatalities by age group by country, 2015	47
Table 31:	Number of motorcycle rider and passenger fatalities by age group by country, 2015	48
Table 32:	Number of car driver and passenger fatalities by age group by country, 2015	49
Table 33:	Number of fatalities by mode of transport and type of area by country (part 1), 2015	51
Table 34:	Number of fatalities by mode of transport and type of area by country (part 2), 2015	52
Table 35:	Number of fatalities by month by country (January to June), 2015	55
Table 36:	Number of fatalities by month by country (July to December), 2015	56
Table 37:	Number of driver fatalities by month by country (January to June), 2015	57
Table 38:	Number of driver fatalities by month by country (July to December), 2015	58
Table 39:	Number of passenger fatalities by month by country (January to June), 2015	59
Table 40:	Number of passenger fatalities by month by country (July to December), 2015	60
Table 41:	Number of pedestrian fatalities by month by country (January to June), 2015	61
Table 42:	Number of pedestrian fatalities by month by country (July to December), 2015	62
Table 43:	Total number of fatalities by day of week by country, 2015	64
Table 44:	Number of fatalities by day of week by country, 2015 (drivers)	65
Table 45:	Number of fatalities by day of week by country, 2015 (passengers)	66
Table 46:	Number of fatalities by day of week by country, 2015 (pedestrians)	67
Table 47:	Number of fatalities by hour of day (00-08) by country, 2015	68
Table 48:	Number of fatalities by hour of day (09-16) by country, 2015	69
Table 49:	Number of fatalities by hour of day (17-24) by country, 2015	70
Table 50:	Number of fatalities by type of area and road by country, 2015	74
Table 51:	Number of fatalities by type of junction by country, 2015	75
Table 52:	Number of fatalities by weather conditions by country, 2015	77

7 List of figures

Figure 1:	Annual number of fatalities, injury accidents and injured people in the EU, 2006-2015	5
Figure 2:	Fatalities per million inhabitants in the EU, 2015 compared to 2006	6
Figure 3:	Percentage change in number of fatalities and injury accidents by country, 2015 and 2006	6
Figure 4:	Annual number of injury accidents by country (part 1), 2006-2015	8
Figure 5:	Annual number of injury accidents by country (part 2), 2006-2015	8
Figure 6:	Annual number of injury accidents by country (part 3), 2006-2015	9
Figure 7:	Annual number of injury accidents by country (part 4), 2006-2015	9
Figure 8:	Annual number of fatalities by country (part 1), 2006-2015	11
Figure 9:	Annual number of fatalities by country (part 2), 2006-2015	11
Figure 10:	Annual number of fatalities by country (part 3), 2006-2015	12
Figure 11:	Annual number of fatalities by country (part 4), 2006-2015	12
Figure 12:	Share of fatalities by area type in the EU, 2015	14
Figure 13:	Distribution of male and female fatalities by road user type in the EU, 2015	14
Figure 14:	Distribution of fatalities by mode of transport in the EU, 2015	15
Figure 15:	Percentage change in number of fatalities by mode of transport in the EU, 2015 and 2006	16
Figure 16:	Annual number of fatalities by mode of transport (drivers and passengers, vulnerable modes) in the EU, 2006-2015	21
Figure 17:	Annual number of drivers and passengers fatalities by mode of transport in the EU, 2006-2015	26
Figure 18:	Increase/decrease of number of fatalities by gender in the EU, 2015 and 2006	27
Figure 19:	Annual distribution of fatalities by gender in the EU, 2006-2015	35
Figure 20:	Fatalities by type of area and mode of transport in the EU, 2015	50
Figure 21:	Number of fatalities by month in the EU, 2015	53
Figure 22:	Number of fatalities by month and road user type in the EU, 2015	54
Figure 23:	Total number of fatalities by day of week and road user type in the EU, 2015	63
Figure 24:	Number of fatalities by hour of day in the EU, 2015	71
Figure 25:	Distribution of fatalities by hour of day and road user type in the EU, 2015	71
Figure 26:	Distribution of fatalities by hour of day and mode of transport in the EU, 2015	72
Figure 27:	Number of fatalities by type of area by country, 2015	73
Figure 28:	Number of fatalities by weather conditions in the EU, 2015	76

