



# Traffic Safety Basic Facts 2018



## Roads outside urban areas



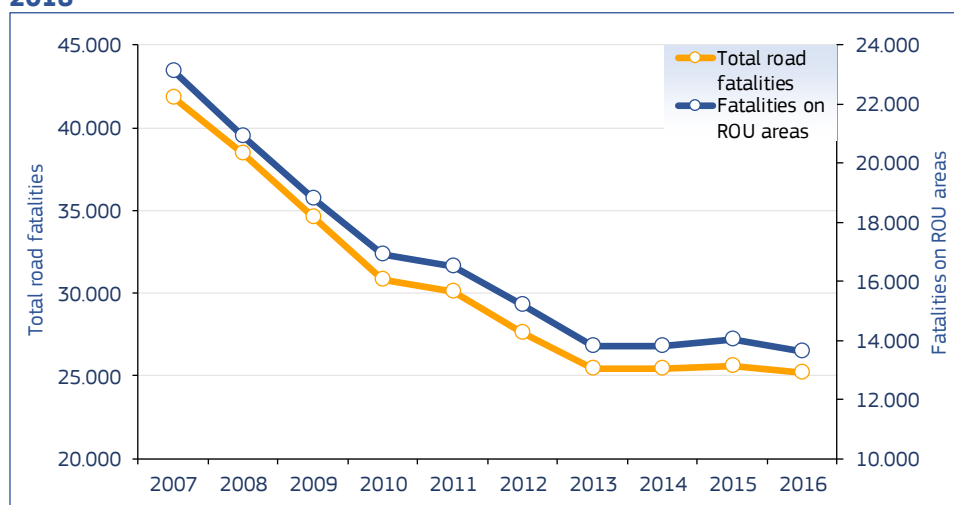
During the decade 2007-2016, about 170.000 people died in accidents on roads outside urban areas (55% of all road fatalities).

## General

About 170.000 people were killed in accidents on roads outside urban areas (hereinafter “ROU areas”) – excluding motorways – in the European Union (EU) between 2007 and 2016. This number represents 55% of all road fatalities in the EU.

Figure 1 shows that fatalities on ROU areas were reduced by 41% over this decade (from 23.105 in 2007 to 13.620 in 2016), following a similar trend to that of all road fatalities. The highest decrease on ROU areas was recorded in 2009, with a fall of 10,2% compared with 2008.

**Figure 1: Number of fatalities on ROU areas and all road fatalities, EU, 2007-2016**



Sources: CARE database, data available in May 2018

Table 1 presents the number of fatalities on ROU areas by country from 2007 to 2016.

The highest decrease in fatalities on ROU areas between 2007 and 2016 was recorded in Slovenia (62%), followed by Spain (61%), Estonia (58%) and Croatia (57%).

Fatalities on roads outside urban areas were reduced by 41% between 2007 and 2016.

The highest reduction of fatalities on roads outside urban areas between 2007 and 2016 was recorded in Slovenia (62%).

**Table 1: Number of fatalities on ROU areas by country, 2007-2016**

	2007	2008	2009	2010	2011	2012	2013	2014	2015	2016
<b>BE</b>	643	531	537	488	461	469	451	420	395	361
<b>BG</b>	-	576	553	427	385	348	354	371	379	-
<b>CZ</b>	731	602	547	483	472	455	388	431	483	356
<b>DK</b>	253	246	187	151	139	100	120	122	100	120
<b>DE</b>	3.012	2.721	2.452	2.207	2.441	2.151	1.934	2.019	1.997	1.853
<b>EE</b>	133	91	79	65	76	-	-	56	-	-
<b>IE</b>	251	216	178	159	139	121	145	127	-	-
<b>EL</b>	748	689	702	578	501	432	336	338	352	352
<b>ES</b>	2.471	1.977	1.669	1.516	1.266	1.144	939	957	971	964
<b>FR</b>	2.988	2.807	2.796	2.621	2.599	2.404	2.098	2.171	2.175	2.188
<b>HR</b>	226	183	189	128	143	121	117	95	112	97
<b>IT</b>	2.336	2.203	1.995	1.956	1.778	1.821	1.652	1.589	1.621	1.546
<b>CY</b>	27	18	22	10	24	17	12	8	14	10
<b>LV</b>	254	219	186	140	126	124	126	143	144	128
<b>LT</b>	-	-	-	-	-	-	-	-	-	-
<b>LU</b>	23	20	20	22	22	20	24	23	28	19
<b>HU</b>	666	523	483	424	355	364	329	362	349	346
<b>MT</b>	-	-	-	-	-	-	-	-	1	9
<b>NL</b>	439	431	332	254	266	280	203	205	305	239
<b>AT</b>	444	419	399	352	338	330	309	271	310	288
<b>PL</b>	2.981	2.903	2.358	2.067	2.193	1.875	1.736	1.680	1.629	1.701
<b>PT</b>	457	372	365	342	320	263	241	241	228	223
<b>RO</b>	979	1.122	1.015	866	731	779	677	651	720	698
<b>SI</b>	162	128	77	59	74	68	56	53	66	62
<b>SK</b>	344	312	199	200	-	-	-	-	-	-
<b>FI</b>	285	227	191	205	207	186	193	159	187	188
<b>SE</b>	323	281	243	170	217	178	181	158	179	168
<b>UK</b>	1.697	1.401	1.206	1.196	1.216	1.086	1.124	1.142	1.093	1.151
<b>EU</b>	<b>23.105</b>	<b>20.906</b>	<b>18.781</b>	<b>16.886</b>	<b>16.489</b>	<b>15.212</b>	<b>13.801</b>	<b>13.792</b>	<b>14.020</b>	<b>13.620</b>
<b>Yearly change</b>		-9,5%	-10,2%	-10,1%	-2,4%	-7,7%	-9,3%	-0,1%	1,7%	-2,9%
<b>IS</b>	14	7	12	4	9	7	11	4	13	13
<b>NO</b>	-	-	156	166	126	-	153	117	95	107
<b>CH</b>	196	195	178	190	165	151	133	138	113	109

Source: CARE database, data available in May 2018

Totals for EU include latest available data (Data for Lithuania, Malta and Slovakia not included in the totals)

Table 2 shows the percentage of road fatalities that occurred on ROU areas during the decade 2007-2016 in each EU country.

While the number of fatalities on ROU areas in the EU countries decreased over that decade, the percentage of all road fatalities remained stable (about 55%), as shown in Figure 2a.

# Traffic Safety Basic Facts 2018 – ROU Areas

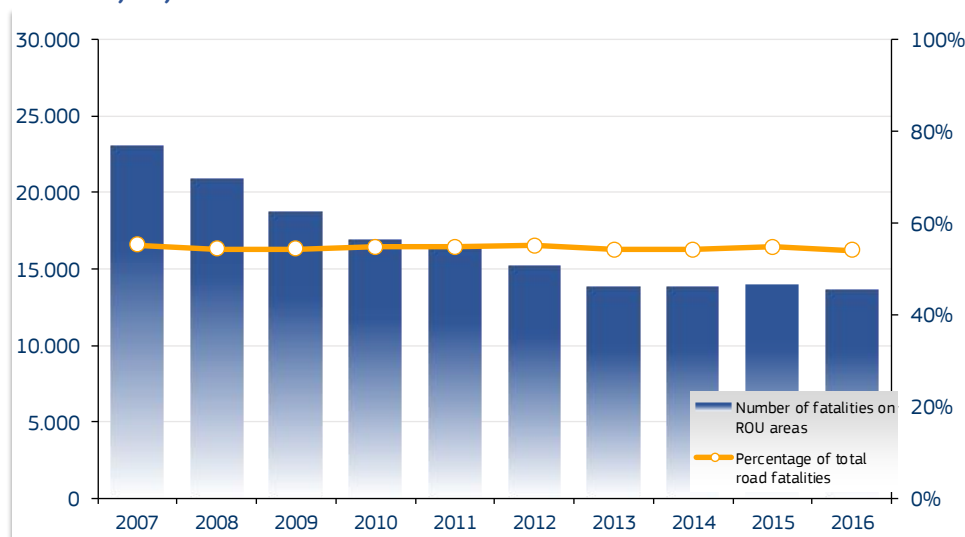
**Table 2: Percentage of fatalities on ROU areas of all road fatalities, 2007-2016**

	2007	2008	2009	2010	2011	2012	2013	2014	2015	2016
<b>BE</b>	60%	56%	57%	58%	53%	61%	62%	58%	54%	57%
<b>BG</b>	-	54%	61%	55%	59%	58%	59%	56%	54%	-
<b>CZ</b>	60%	56%	61%	60%	61%	61%	59%	63%	66%	58%
<b>DK</b>	62%	61%	62%	59%	63%	60%	63%	67%	56%	57%
<b>DE</b>	61%	61%	59%	60%	61%	60%	58%	60%	58%	58%
<b>EE</b>	68%	69%	81%	82%	75%	87%	69%	72%	-	-
<b>IE</b>	74%	77%	75%	75%	75%	-	-	66%	-	-
<b>EL</b>	46%	44%	48%	46%	44%	44%	38%	43%	44%	43%
<b>ES</b>	65%	64%	62%	61%	61%	60%	56%	57%	57%	53%
<b>FR</b>	65%	66%	65%	66%	66%	66%	64%	64%	63%	63%
<b>HR</b>	37%	28%	34%	30%	34%	31%	32%	31%	32%	32%
<b>IT</b>	46%	47%	47%	48%	46%	49%	49%	47%	47%	47%
<b>CY</b>	30%	22%	31%	17%	34%	33%	27%	18%	25%	22%
<b>LV</b>	61%	69%	73%	64%	70%	70%	70%	67%	77%	81%
<b>LT</b>	-	-	-	-	-	-	-	-	-	-
<b>LU</b>	50%	-	-	69%	67%	59%	53%	66%	78%	59%
<b>HU</b>	54%	53%	59%	57%	56%	60%	56%	58%	54%	57%
<b>MT</b>	-	-	-	-	-	-	-	-	9%	39%
<b>NL</b>	62%	64%	52%	47%	49%	50%	43%	43%	57%	45%
<b>AT</b>	64%	62%	63%	64%	65%	62%	68%	63%	65%	67%
<b>PL</b>	53%	53%	52%	53%	52%	53%	52%	52%	55%	56%
<b>PT</b>	47%	42%	43%	36%	36%	37%	38%	38%	38%	40%
<b>RO</b>	35%	37%	36%	36%	36%	38%	36%	36%	38%	36%
<b>SI</b>	55%	60%	45%	43%	52%	52%	45%	49%	55%	48%
<b>SK</b>	52%	51%	52%	54%	-	-	-	-	-	-
<b>FI</b>	75%	66%	68%	75%	71%	73%	75%	69%	70%	73%
<b>SE</b>	69%	71%	68%	64%	68%	62%	70%	59%	69%	62%
<b>UK</b>	55%	53%	52%	63%	62%	60%	64%	62%	61%	62%
<b>EU</b>	<b>55%</b>	<b>54%</b>	<b>54%</b>	<b>55%</b>	<b>55%</b>	<b>55%</b>	<b>54%</b>	<b>54%</b>	<b>55%</b>	<b>54%</b>
<b>IS</b>	93%	58%	71%	50%	75%	78%	73%	100%	81%	72%
<b>NO</b>	-	-	74%	80%	75%	-	82%	80%	81%	79%
<b>CH</b>	51%	55%	51%	58%	52%	45%	49%	57%	45%	50%

Source: CARE database, data available in May 2018

The percentage of fatalities that occurred on ROU areas remained stable (about 55%) during the decade 2007-2016.

**Figure 2a: Number of fatalities on ROU areas and percentage of all road fatalities, EU, 2007-2016**

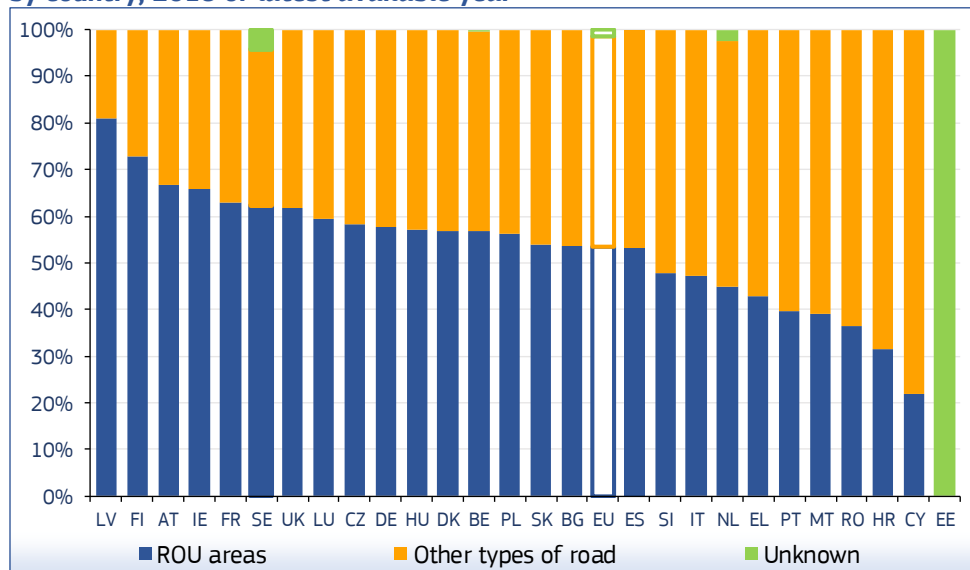


Source: CARE database, data available in May 2018

The percentages of fatalities on ROU areas in 2016 varied between 32% in Croatia and 81% in Latvia among the EU countries.

# Traffic Safety Basic Facts 2018 – ROU Areas

**Figure 2b: Distribution of fatalities on ROU areas and on other types of roads by country, 2016 or latest available year**



Source: CARE database, data available in May 2018

To compare the fatality data for ROU areas in the different countries, the respective population size was taken into account (see Table 3). About 65 people per million population were killed in accidents on ROU areas in Latvia, which is about 2,5 times as high as the EU rate (27).

In Latvia, 81% of the road fatalities in 2016 occurred on roads outside urban areas.

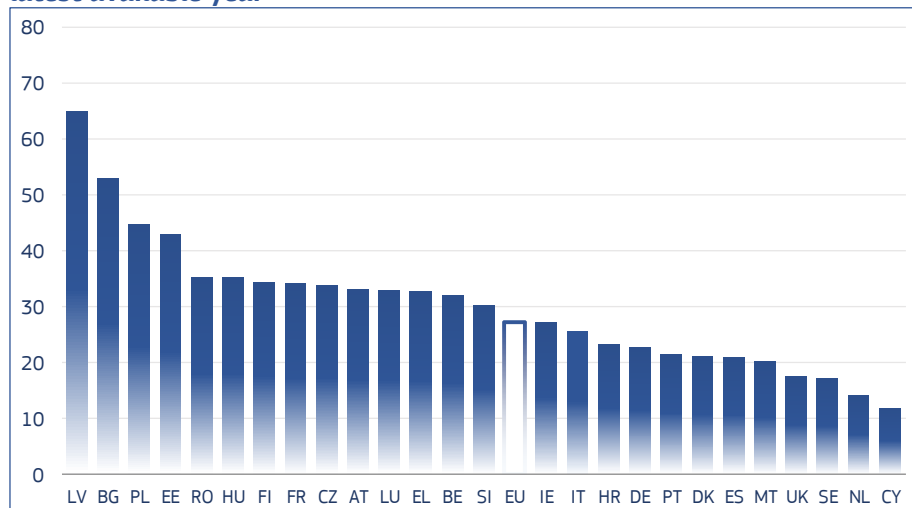
**Table 3: ROU area fatality rates per million population by country, 2007-2016**

	2007	2008	2009	2010	2011	2012	2013	2014	2015	2016
BE	61	50	50	45	42	42	40	38	35	32
BG	-	77	74	58	52	47	49	51	53	-
CZ	71	58	52	46	45	43	37	41	46	34
DK	46	45	34	27	25	18	21	22	18	21
DE	37	33	30	27	30	27	24	25	25	23
EE	99	68	59	49	57	57	42	43	-	-
IE	58	48	39	35	30	-	-	27	-	-
EL	68	62	63	52	45	39	31	31	32	33
ES	55	43	36	33	27	24	20	21	21	21
FR	48	45	45	42	41	38	33	34	34	34
HR	52	42	44	30	33	28	27	22	27	23
IT	40	38	34	33	30	31	28	26	27	25
CY	36	23	28	12	29	20	14	9	17	12
LV	115	100	86	66	61	61	62	71	73	65
LT	-	-	-	-	-	-	-	-	-	-
LU	48	-	-	44	43	38	45	42	50	33
HU	66	52	48	42	36	37	33	37	35	35
MT	-	-	-	-	-	-	-	-	2	20
NL	27	26	20	15	16	17	12	12	18	14
AT	54	50	48	42	40	39	37	32	36	33
PL	78	76	62	54	58	49	46	44	43	45
PT	43	35	35	32	30	25	23	23	22	22
RO	46	54	50	43	36	39	34	33	36	35
SI	81	64	38	29	36	33	27	26	32	30
SK	64	58	37	37	-	-	-	-	-	-
FI	54	43	36	38	39	34	36	29	34	34
SE	35	31	26	18	23	19	19	16	18	17
UK	28	23	19	19	19	17	18	18	17	18
EU	47	43	38	34	33	31	28	28	28	27
IS	46	22	38	13	28	22	34	12	40	39
NO	-	-	33	34	26	-	30	23	18	21
CH	26	26	23	24	21	19	17	17	14	13

Sources: CARE database (EUROSTAT for population data), data available in May 2018

# Traffic Safety Basic Facts 2018 – ROU Areas

**Figure 3: ROU area fatality rates per million population by country, 2016 or latest available year**



Sources: CARE database (EUROSTAT for population data), data available in May 2018

**Map 1: ROU area fatality rates per million population by country, 2016 or latest available year**



Latvia had the highest fatality rate per million population on roads outside urban areas in 2016.

In the following tables and figures, the CARE data for 2016 are analysed in greater detail. It should be noted that the latest available data are used, meaning 2010 data for SK, 2014 data for EE and IE and 2015 data for BG and LT.

## Age group and Gender

Table 4 provides the age distribution of the people killed in accidents on ROU areas. 53% of fatalities on ROU areas were aged 18-49 and concretely; 38% of fatalities on ROU areas were aged 25-49.

**Table 4: Total number and distribution of fatalities on ROU areas by country and age group, 2016 or latest available year**

	0-14	15-17	18-24	25-49	50-64	65+	Unknown	Total
BE	2%	2%	14%	43%	18%	20%	1%	361
BG	2%	2%	15%	44%	22%	15%	1%	379
CZ	2%	2%	13%	42%	24%	18%	0%	356
DK	3%	2%	18%	32%	18%	29%	0%	120
DE	1%	3%	16%	31%	23%	25%	0%	1.853
EE	2%	2%	23%	34%	23%	16%	0%	56
IE	6%	3%	15%	39%	15%	20%	2%	127
EL	3%	1%	11%	36%	22%	28%	0%	352
ES	1%	1%	9%	41%	23%	24%	0%	964
FR	3%	3%	18%	37%	18%	21%	0%	2.188
HR	0%	0%	10%	36%	32%	22%	0%	97
IT	2%	2%	12%	39%	20%	25%	1%	1.546
CY	10%	20%	0%	30%	20%	20%	0%	10
LV	2%	4%	12%	34%	23%	21%	5%	128
LT	-	-	-	-	-	-	-	-
LU	5%	0%	5%	47%	5%	37%	0%	19
HU	2%	1%	8%	42%	26%	21%	0%	346
MT	0%	0%	0%	89%	11%	0%	0%	9
NL	3%	2%	14%	28%	18%	35%	0%	239
AT	1%	4%	15%	35%	18%	25%	0%	288
PL	2%	2%	17%	42%	21%	15%	0%	1.701
PT	0%	1%	11%	33%	26%	27%	0%	223
RO	2%	2%	11%	45%	23%	17%	0%	698
SI	2%	3%	19%	39%	26%	11%	0%	62
SK	2%	2%	18%	40%	15%	9%	16%	200
FI	4%	2%	19%	36%	17%	22%	0%	188
SE	1%	4%	13%	32%	21%	30%	0%	168
UK	3%	3%	16%	39%	17%	22%	0%	1.151
<b>EU</b>	<b>2%</b>	<b>2%</b>	<b>15%</b>	<b>38%</b>	<b>21%</b>	<b>22%</b>	<b>1%</b>	<b>13.829</b>
IS	8%	15%	0%	31%	31%	15%	0%	13
NO	1%	2%	15%	35%	27%	21%	0%	107
CH	3%	2%	17%	28%	28%	23%	0%	109

Source: CARE database, data available in May 2018

Even though they represent low frequencies with respect to the total, the countries with the highest percentages of child fatalities (aged below 15 years old) on ROU areas are Ireland (6%) and Finland (4%). In the 18-24 age group, the highest percentages were recorded in Estonia (23%), Slovenia and Finland (19%).

In 2016, 53% of the people killed on roads outside urban areas were aged 18-49.

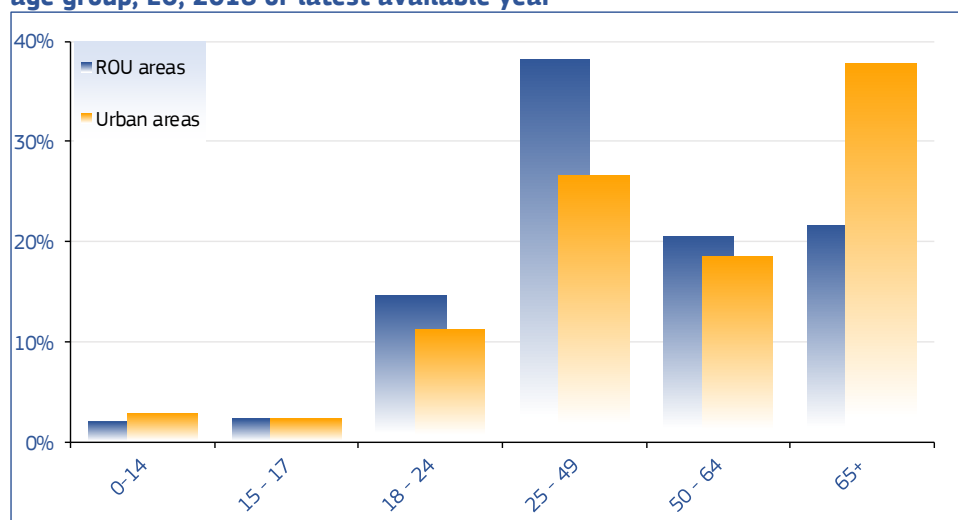
# Traffic Safety Basic Facts 2018 – ROU Areas

38% of the fatalities in urban areas were elderly people. On ROU areas, this percentage is reduced to 22%.

Romania (45%) and Bulgaria (44%) had the highest percentages of fatalities aged between 25 and 49 years old on ROU areas, while the Netherlands (35%) and Sweden (30%) had the highest percentages of elderly fatalities.

Figure 4 illustrates the distribution of fatalities in accidents on ROU areas, as well as in accidents in urban areas, by age group.

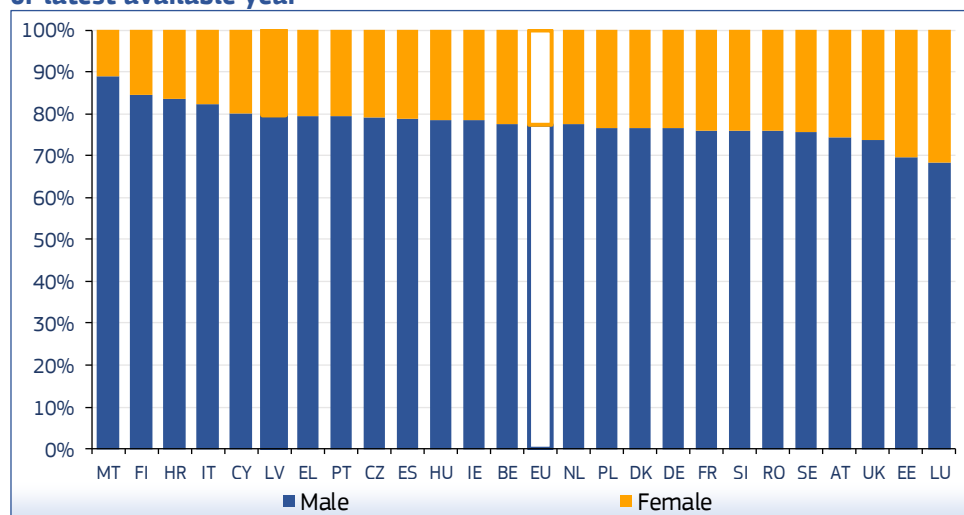
**Figure 4: Distribution of fatalities on ROU areas and on roads in urban areas by age group, EU, 2016 or latest available year**



Source: CARE database, data available in May 2018

Figure 5 shows how the fatalities on ROU areas are distributed by gender. Estonia is the country with the highest percentage of female fatalities (30%), while Finland (15%), Croatia (16%) and Italy (18%) had the lowest percentages.

**Figure 5: Distribution of fatalities on ROU areas by country and gender, 2016 or latest available year**



Source: CARE database, data available in May 2018

In Estonia, about 30% of the fatalities on roads outside urban areas concerned women.



59% of fatalities on ROU areas across the EU countries in 2016 were car or taxi occupants.

17% of EU fatalities on ROU areas were riders of PTW.

## Road User Type and Transport Mode

Table 5 shows the distribution of fatalities on ROU areas by mode of transport in the EU countries.

**Table 5: Total number and distribution of fatalities on ROU areas by country and mode of transport, 2016 or latest available year**

	Car/Taxi	PTW	Bus/Lorry	Pedestrian	Pedal cycle	Other/unknown	Total
<b>BE</b>	58%	16%	6%	6%	11%	3%	361
<b>BG</b>	69%	6%	0%	11%	3%	10%	379
<b>CZ</b>	69%	12%	3%	7%	7%	3%	356
<b>DK</b>	55%	23%	6%	4%	10%	3%	120
<b>DE</b>	60%	23%	2%	6%	8%	2%	1.853
<b>EE</b>	52%	0%	11%	25%	0%	13%	56
<b>IE</b>	64%	16%	4%	9%	4%	3%	127
<b>EL</b>	57%	22%	7%	7%	3%	4%	352
<b>ES</b>	54%	20%	7%	9%	4%	5%	964
<b>FR</b>	62%	20%	5%	6%	4%	3%	2.188
<b>HR</b>	58%	18%	2%	11%	6%	5%	97
<b>IT</b>	57%	23%	2%	7%	7%	4%	1.546
<b>CY</b>	20%	20%	20%	10%	0%	30%	10
<b>LV</b>	47%	11%	2%	32%	5%	4%	128
<b>LT</b>	-	-	-	-	-	-	-
<b>LU</b>	74%	11%	0%	11%	5%	0%	19
<b>HU</b>	58%	10%	4%	17%	10%	2%	346
<b>MT</b>	11%	67%	0%	11%	11%	0%	9
<b>NL</b>	49%	16%	6%	4%	16%	9%	239
<b>AT</b>	51%	27%	3%	7%	9%	2%	288
<b>PL</b>	61%	9%	0%	17%	7%	6%	1.701
<b>PT</b>	54%	14%	8%	9%	4%	9%	223
<b>RO</b>	63%	3%	7%	17%	6%	3%	698
<b>SI</b>	44%	24%	0%	10%	13%	10%	62
<b>SK</b>	64%	7%	0%	19%	6%	5%	200
<b>FI</b>	67%	7%	7%	5%	5%	9%	188
<b>SE</b>	63%	17%	3%	8%	4%	7%	168
<b>UK</b>	56%	19%	4%	14%	5%	2%	1.151
<b>EU</b>	<b>59%</b>	<b>17%</b>	<b>4%</b>	<b>10%</b>	<b>6%</b>	<b>4%</b>	<b>13.829</b>
<b>IS</b>	77%	8%	0%	8%	0%	8%	13
<b>NO</b>	56%	18%	2%	6%	6%	13%	107
<b>CH</b>	42%	31%	2%	9%	10%	6%	109

Source: CARE database, data available in May 2018

# Traffic Safety Basic Facts 2018 – ROU Areas

In Latvia, 32% of the fatalities on ROU areas were pedestrians.

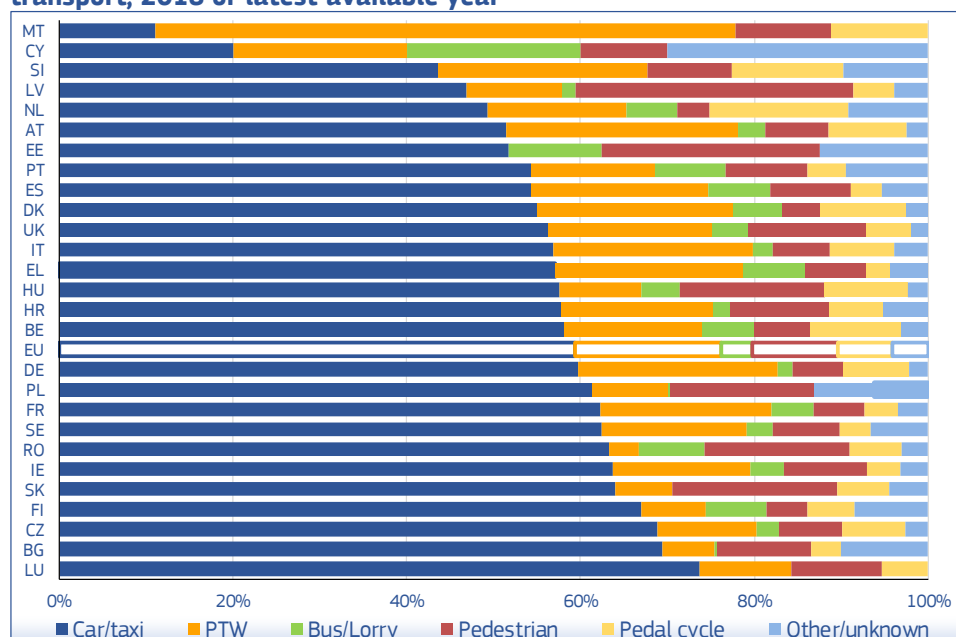
Austria had the highest percentages of PTW fatalities on ROU areas in 2016.

Figure 6 shows that in 2016, Bulgaria and the Czech Republic had the highest percentages (69%) of fatalities on ROU areas by car or taxi, while Slovenia had the lowest (44%) and the EU average was 59%.

17% of EU fatalities on ROU areas were riders of powered two-wheelers (motorcycle and moped users). The percentage was highest in Austria (27%). The highest percentages of cyclist fatalities on ROU areas were recorded in the Netherlands (16%) and in Slovenia (13%).

Estonia and Portugal are the countries with the highest percentages of fatalities on ROU areas involving lorries or buses (11% and 8% respectively). Also, 32% of the fatalities on ROU areas in Latvia were pedestrians, i.e. the highest percentage in the European Union.

**Figure 6: Distribution of fatalities on ROU areas by country and mode of transport, 2016 or latest available year**



Source: CARE database, data available in May 2018

About one out of ten people killed on roads outside urban areas were pedestrians.

In Romania, half of the fatalities on roads outside urban areas were pedestrians and passengers.

Table 6 shows the distribution of fatalities on ROU areas by road user type in the EU countries. 10% of the fatalities were pedestrians in 2016. This percentage varies between countries, while it is highest in Latvia (32%) and Estonia (25%).

In contrast, more than 80% of fatalities in the Netherlands, Slovenia and Germany were drivers, higher than the EU average of 70%.

In Bulgaria and Romania, the share of passenger fatalities in accidents on ROU areas was more than 30%.

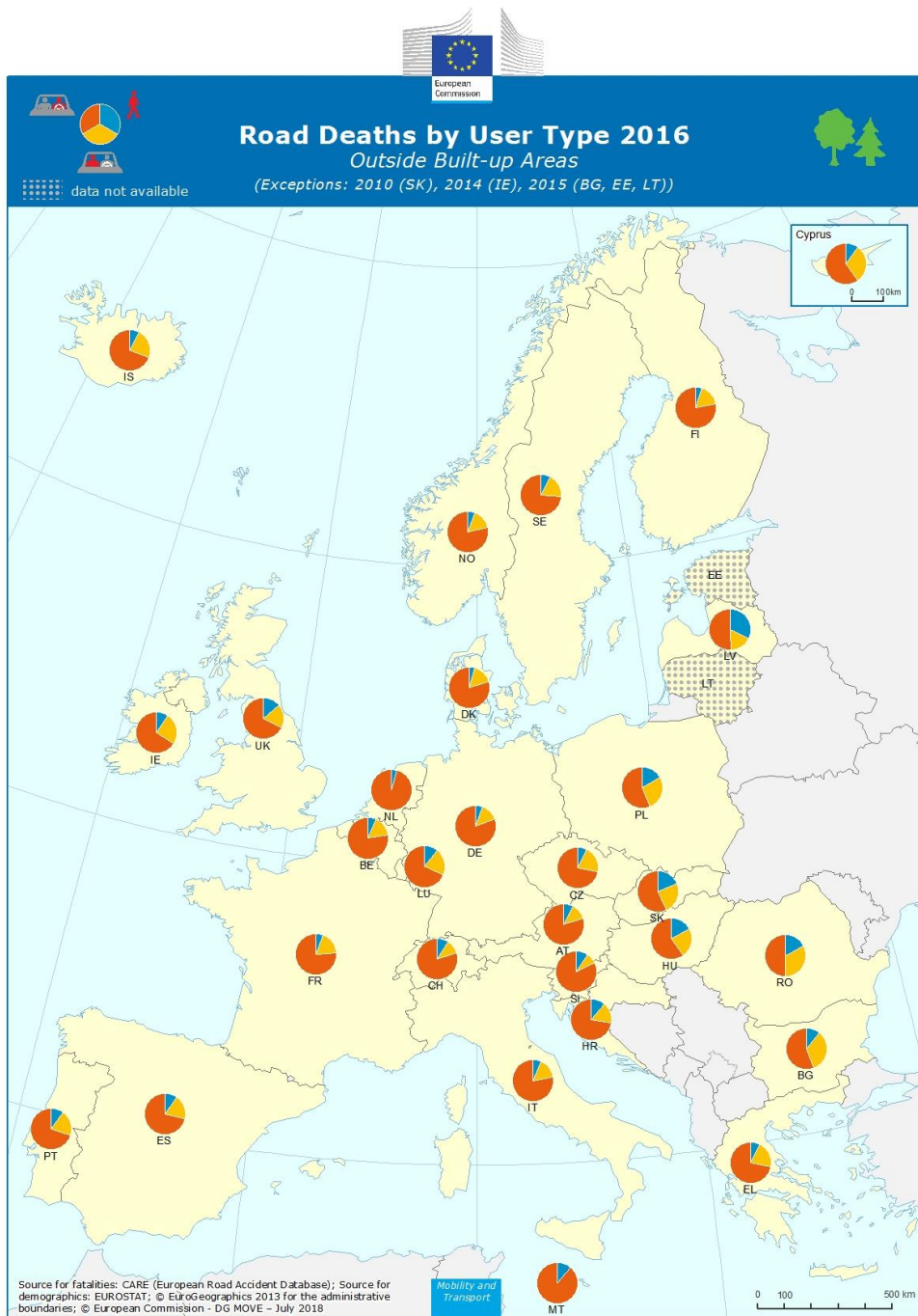
**Table 6: Total number and distribution of fatalities on ROU areas by country and road user type, 2016 or latest available year**

	Driver	Passenger	Pedestrian	Unknown	Total
BE	77%	16%	6%	1%	361
BG	55%	34%	11%	0%	379
CZ	72%	21%	7%	0%	356
DK	80%	16%	4%	0%	120
DE	81%	13%	6%	0%	1.853
EE	59%	13%	25%	4%	56
IE	66%	24%	9%	0%	127
EL	72%	21%	7%	0%	352
ES	71%	20%	9%	0%	964
FR	76%	18%	6%	0%	2.188
HR	72%	16%	11%	0%	97
IT	78%	16%	7%	0%	1.546
CY	60%	30%	10%	0%	10
LV	51%	17%	32%	0%	128
LT	-	-	-	-	-
LU	68%	21%	11%	0%	19
HU	60%	23%	17%	0%	346
MT	89%	0%	11%	0%	9
NL	86%	0%	4%	10%	239
AT	80%	13%	7%	0%	288
PL	57%	27%	17%	0%	1.701
PT	70%	20%	9%	0%	223
RO	50%	33%	17%	0%	698
SI	82%	8%	10%	0%	62
SK	57%	24%	19%	0%	200
FI	78%	17%	5%	0%	188
SE	73%	18%	8%	1%	168
UK	68%	19%	14%	0%	1.151
<b>EU</b>	<b>70%</b>	<b>20%</b>	<b>10%</b>	<b>0%</b>	<b>13.829</b>
IS	69%	23%	8%	0%	13
NO	79%	16%	6%	0%	107
CH	80%	11%	9%	0%	109

Source: CARE database, data available in May 2018

# Traffic Safety Basic Facts 2018 – ROU Areas

**Map 2: Distribution of fatalities on ROU areas by country and road user type, 2016 or latest available year**



57% of the fatalities in non-junction accidents were recorded on roads outside urban areas.

## Junction

Table 7 shows the proportion of fatalities in junction and non-junction accidents that were recorded on ROU areas in the EU countries.

**Table 7: Number of road fatalities by country, “junction” and road type and percentage of fatalities on ROU areas by country and “junction”, 2016 or latest available year**

	Fatalities at junction			Fatalities not at junction		
	ROU areas	All roads	ROU proportion	ROU areas	All roads	ROU proportion
BE	36	85	42%	300	510	59%
BG	2	2	100%	362	647	56%
CZ	55	125	44%	301	486	62%
DK	30	58	52%	90	151	60%
DE	-	-	-	1.491	2.491	60%
EE	7	13	54%	49	65	75%
IE	17	35	49%	-	-	-
EL	-	-	-	-	-	-
ES	166	389	43%	798	1.421	56%
FR	226	486	47%	1.962	2.985	66%
HR	10	46	22%	87	261	33%
IT	336	760	44%	1.210	2.523	48%
CY	1	10	10%	9	36	25%
LV	2	7	29%	126	151	83%
LT	-	-	-	-	-	-
LU	0	4	0%	19	28	68%
HU	42	115	37%	304	492	62%
MT	1	3	33%	7	18	39%
NL	50	142	35%	188	375	50%
AT	37	85	44%	251	347	72%
PL	199	513	39%	1.502	2.513	60%
PT	13	78	17%	210	481	44%
RO	43	207	21%	655	1.706	38%
SI	1	2	50%	58	120	48%
SK	16	44	36%	183	324	56%
FI	4	8	50%	170	216	79%
SE	29	61	48%	139	209	67%
UK	282	626	45%	869	1.234	70%
<b>EU</b>	<b>1.605</b>	<b>3.904</b>	<b>41%</b>	<b>11.692</b>	<b>20.569</b>	<b>57%</b>
IS	1	3	33%	12	15	80%
NO	-	-	-	-	-	-
CH	14	33	42%	-	-	-

Source: CARE database, data available in May 2018

In 2016, at junctions, 41% of the fatalities occurred on ROU areas. This proportion is highest in Estonia (54%), Denmark (52%), Slovenia and Finland (50%).

57% of the fatalities in non-junction accidents that occurred in the EU countries were recorded on ROU areas. However, this percentage is higher in Latvia (83%), Finland (79%) and Estonia (75%).

41% of fatalities at junctions were recorded on ROU areas.

# Traffic Safety Basic Facts 2018 – ROU Areas

**Figure 7: Distribution of fatalities on ROU areas by country and “junction”, 2016 or latest available year**



Source: CARE database, data available in May 2018

Figure 7 shows the distribution of fatalities on ROU areas according to the road segment (i.e. at junction, not at junction) in the EU countries. 85% of total ROU area fatalities in the EU did not occur at junctions; this percentage is higher in Latvia (98%).

Although the EU percentage of fatalities on ROU areas is lower at junctions (12%), Denmark and the UK had a higher percentage than the EU average (25%).

In Denmark and the UK, 25% of fatalities on roads outside urban areas occurred at junctions.

## Lighting Conditions

Table 9 shows that in the EU countries the percentage of fatalities in daylight conditions is slightly higher on ROU areas (54,3%) than in urban areas or motorways.

About 30% of the ROU area fatalities occurred in accidents in the dark, this percentage being lower than in urban areas (31%) and also lower than on motorways (37%).

The “darkness” variable is divided into specific lighting conditions that can occur in combination with darkness conditions. On ROU areas, about 18% of the fatalities happened in darkness without any street light. However, the proportions collected under the different categories of “darkness” may be distorted because of the high percentage of unknown in the variable describing whether the street light was lit or unlit.

**Table 9: Distribution of fatalities on ROU areas, urban areas and motorways by lighting conditions, EU, 2016 or latest available year**

	ROU areas	Urban areas	Motorways	Total
<b>Daylight</b>	54,3%	49,1%	45,3%	51,6%
<b>Twilight</b>	4,7%	4,5%	3,8%	4,6%
<b>Darkness - no street lights</b>	18,4%	5,0%	17,9%	13,1%
<b>Darkness - street lights lit</b>	4,0%	21,8%	7,4%	11,1%
<b>Darkness - street lights unknown</b>	5,0%	3,3%	8,4%	4,6%
<b>Darkness - street lights unlit</b>	2,1%	1,1%	3,5%	1,8%
<b>Unknown</b>	11,5%	15,2%	13,8%	13,1%

Source: CARE database, data available in May 2018

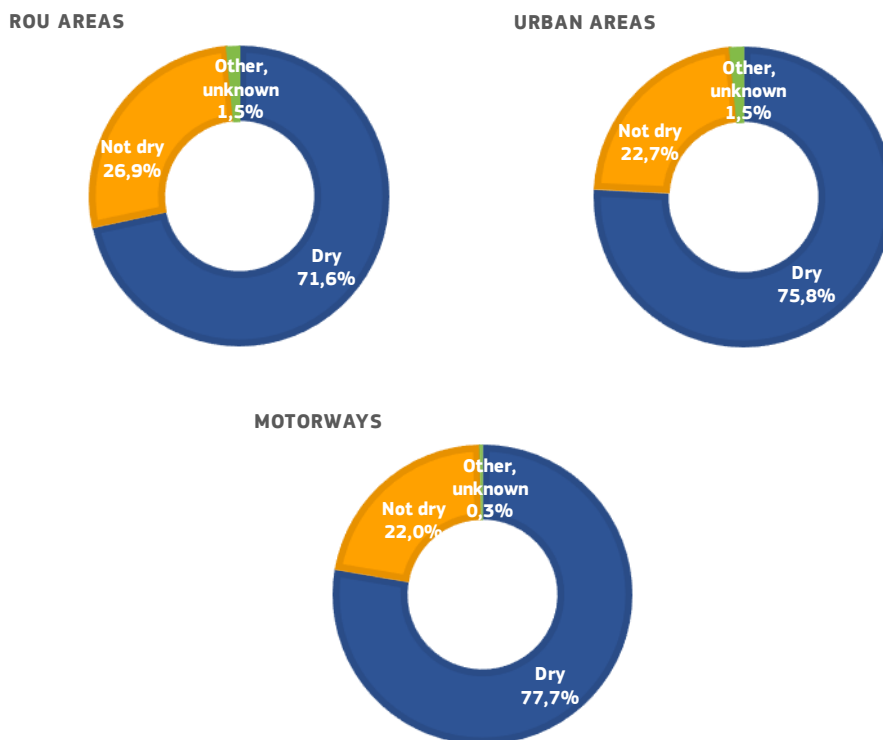
More than half of the fatalities on roads outside urban areas occurred under daylight conditions.

## Road Surface Conditions

Figure 8 shows that in 2016, 27% of the fatalities on ROU areas in the EU countries were killed on non-dry road surface conditions (water, ice, snow or slippery). This percentage is lower in urban areas and on motorways.

By analysing the categories in a disaggregate way, we can see that almost 90% of the ROU area fatalities on non-dry road surface conditions occurred on wet or damp roads.

**Figure 8: Distribution of fatalities on ROU areas, urban areas and motorways by road surface conditions, EU, 2016 or latest available year**



More than a quarter of the fatalities on roads outside urban areas occurred on non-dry road surface conditions.

Source: CARE database, data available in May 2018



## Notes

### 1. Country abbreviations

	Belgium	BE		Italy	IT		Romania	RO
	Bulgaria	BG		Cyprus	CY		Slovenia	SI
	Czech Republic	CZ		Latvia	LV		Slovakia	SK
	Denmark	DK		Lithuania	LT		Finland	FI
	Germany	DE		Luxembourg	LU		Sweden	SE
	Estonia	EE		Hungary	HU		United Kingdom	UK
	Ireland	IE		Malta	MT			
	Greece	EL		Netherlands	NL		Iceland	IS
	Spain	ES		Austria	AT		Liechtenstein	LI
	France	FR		Poland	PL		Norway	NO
	Croatia	HR		Portugal	PT		Switzerland	CH

### 2. Sources: CARE (Community database on road accidents)

The full glossary of definitions of variables used in this Report is available at:  
[http://ec.europa.eu/transport/road\\_safety/pdf/statistics/cadas\\_glossary.pdf](http://ec.europa.eu/transport/road_safety/pdf/statistics/cadas_glossary.pdf)

### 3. Data available in May 2018.

4. Data refer to 2016 and when not available the latest available data are used (2010 data for SK, 2014 data for EE and IE and 2015 data for BG and LT). Totals and related average percentages for EU also include latest available data.

5. Data for Lithuania, Malta and Slovakia are not included in the totals of data comparing the years 2007-2016.

6. At the commenting of the tables and figures, countries with small figures are omitted.

7. This 2018 edition of Traffic Safety Basic Facts updates the previous versions produced within the EU co-funded research projects SafetyNet and DaCoTA.

### 8. Disclaimer

This report has been produced by the National Technical University of Athens ([NTUA](#)), the Austrian Road Safety Board ([KFV](#)) and the European Union Road Federation ([ERF](#)) under a contract with the [European Commission](#). Whilst every effort has been made to ensure that the matter presented in this report is relevant, accurate and up-to-date, the Partners cannot accept any liability for any error or omission, or reliance on part or all of the content in another context.

Any information and views set out in this report are those of the author(s) and do not necessarily reflect the official opinion of the Commission. The Commission does not guarantee the accuracy of the data included in this study. Neither the Commission nor any person acting on the Commission's behalf may be held responsible for the use that may be made of the information contained therein.

### 9. Please refer to this Report as follows:

*European Commission, Traffic Safety Basic Facts on Roads outside urban areas, European Commission, Directorate General for Transport, June 2018.*

