



Annual Accident Report 2016



CONTENTS

1	<i>Introduction</i>	3
1.1	The CARE Database	3
1.2	Notes	4
2	<i>Overview – major issues</i>	5
2.1	EU– Developments	5
2.2	Interesting Details	14
3	<i>Time Series – last 10 years in detail</i>	16
3.1	Time series related to mode of transport	16
3.2	Time series related to age and gender	27
4	<i>Fatalities 2014</i>	42
4.1	People involved	42
4.1.1	Age and gender	42
4.2	Modes of transport	45
4.2.1	Mode of transport by age	45
4.2.2	Mode of transport by type of area	50
4.3	Accident characteristics	53
4.3.1	Various periods of time (month, day of week, hour of day)	53
4.3.2	Type of area/road	73
4.3.3	Type of junction	75
4.3.4	Weather conditions	76
5	<i>Glossary</i>	78
6	<i>List of tables</i>	84
7	<i>List of figures</i>	85

1 Introduction

1.1 The CARE Database

Community database on **A**ccidents on the **R**oads in **E**urope

Road traffic accidents in the Member States of the European Union claim about 26.000 lives and leave more than 1,3 million people injured in 2014. Since 1984, a large number of measures to reduce road accidents have been taken at regional level. Along with these measures, the Council adopted a Decision on 30 November 1993 on the creation of a Community database on road accidents (93/704/EC)¹, the CARE project.

It was commonly agreed that such a database at the Community level would make it possible to identify and quantify road safety problems, evaluate the efficiency of road safety measures, determine the relevance of Community actions and facilitate the exchange of experience in this field. After a pilot phase of about 3 years, the Council endorsed the “Report from the Commission on the progress with the project and its future prospects” (COM(97) 238 final).

CARE is a Community database on road accidents resulting in death or injury (no statistics on damage-only accidents are kept). The major difference between CARE and most other existing international databases is the high level of disaggregation, i.e. CARE is based on detailed data of individual accidents as collected by the Member States. This structure allows for maximum flexibility and potential with regard to analysing the information contained in the system and opens up a whole set of new possibilities in the field of accident analysis.

National data sets are integrated into the CARE database in their original national structure and definitions, with confidential data blanked out. However, transformation rules are implemented in the CARE database in order to increase data compatibility and thus enhance the functioning of the system.

The process of improving “homogenisation” of accident data within CARE is underway. In the meantime, the inherent incompatibility of national accident data remains a source of possible misinterpretation when performing comparative analyses at international level. Therefore, on-line access to the CARE database is currently restricted to expert users. The summary statistical tables and figures contained here provide an overview of road accident data from 2005 to 2014. For some figures other sources than CARE have been used in order to give an overview of EU road accident data.

¹ OJ No 329, 30.12.1993, p. 63.

1.2 Notes

1. Country abbreviations

 Belgium	BE	 Italy	IT	 Romania	RO
 Bulgaria	BG	 Cyprus	CY	 Slovenia	SI
 Czech Republic	CZ	 Latvia	LV	 Slovakia	SK
 Denmark	DK	 Lithuania	LT	 Finland	FI
 Germany	DE	 Luxembourg	LU	 Sweden	SE
 Estonia	EE	 Hungary	HU	 United Kingdom	UK
 Ireland	IE	 Malta	MT		
 Greece	EL	 Netherlands	NL	 Iceland	IS
 Spain	ES	 Austria	AT	 Liechtenstein	LI
 France	FR	 Poland	PL	 Norway	NO
 Croatia	HR	 Portugal	PT	 Switzerland	CH

2. Sources: CARE (Community database on road accidents)

The glossary of definitions of variables used in this Report is in the appendix, the full glossary is available at: http://ec.europa.eu/transport/road_safety/pdf/statistics/cadas_glossary.pdf.

3. Data available in May 2016.

4. Data refer to 2014 and when not available the latest available data are used (2009 data for BG, 2010 data for MT, and 2013 data for IE, SI and SK). Totals and related average percentages for EU also include latest available data.

5. This 2016 edition of Annual Accident Report updates the previous versions produced within the EU co-funded research projects SafetyNet and DaCoTA under the name Annual Statistical Report.

6. Disclaimer

This report has been produced by the National Technical University of Athens ([NTUA](#)), the Austrian Road Safety Board ([KFV](#)) and the European Union Road Federation ([ERF](#)) under a contract with the European Commission. Whilst every effort has been made to ensure that the matter presented in this report is relevant, accurate and up-to-date, the Partners cannot accept any liability for any error or omission, or reliance on part or all of the content in another context. Any information and views set out in this report are those of the author(s) and do not necessarily reflect the official opinion of the Commission. The Commission does not guarantee the accuracy of the data included in this study. Neither the Commission nor any person acting on the Commission's behalf may be held responsible for the use that may be made of the information contained therein.

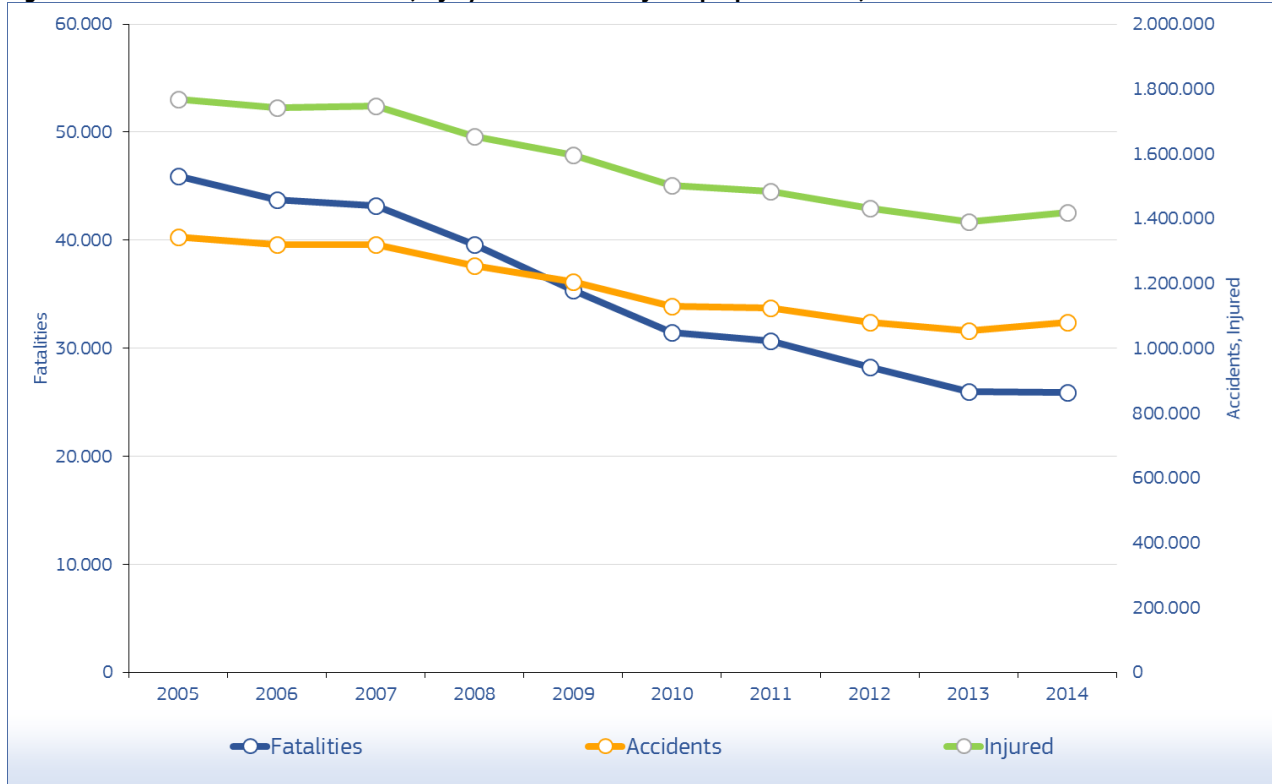
7. Please refer to this Report as follows:

European Commission, Annual Accident Report. European Commission, Directorate General for Transport, June 2016.

2 Overview – major issues

2.1 EU- Developments

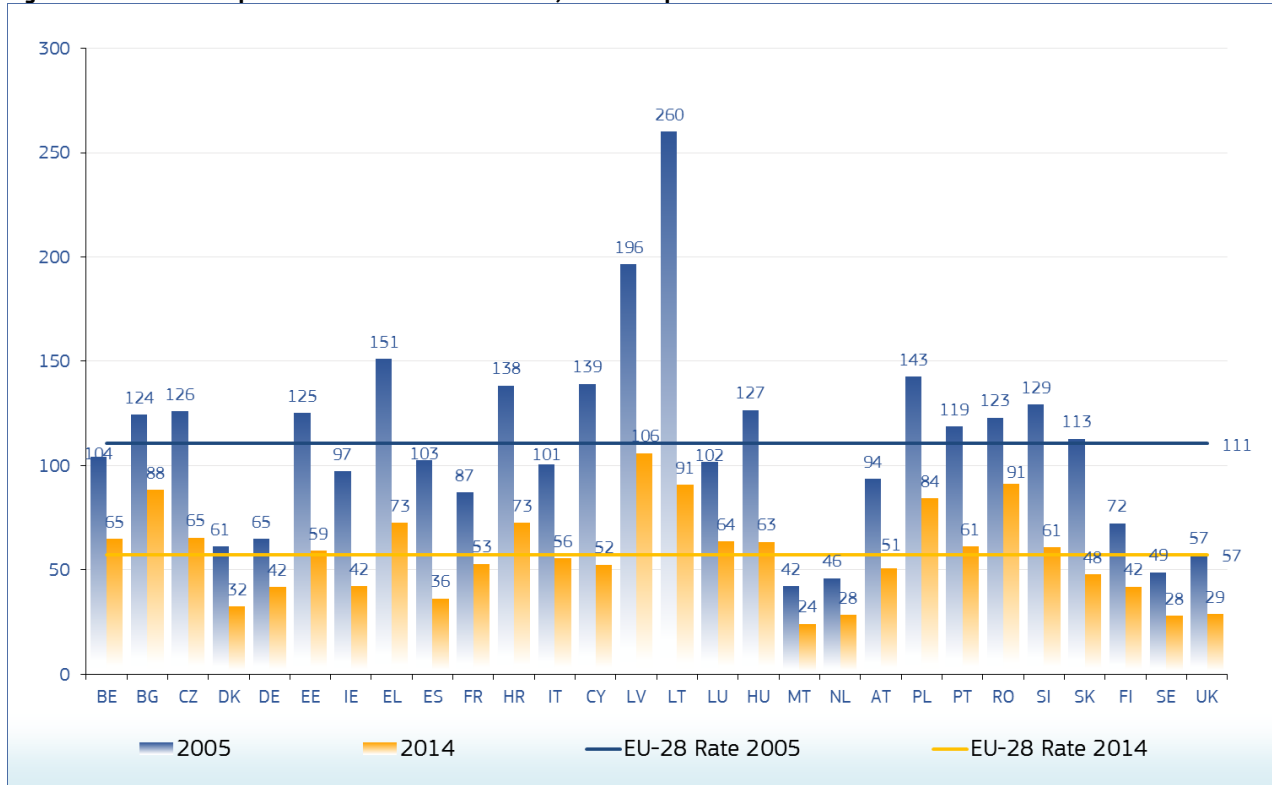
Figure 1: Annual number of fatalities, injury accidents and injured people in the EU, 2005-2014



Source: CARE (EU road accidents database) or national publications
 Last update: May 2016

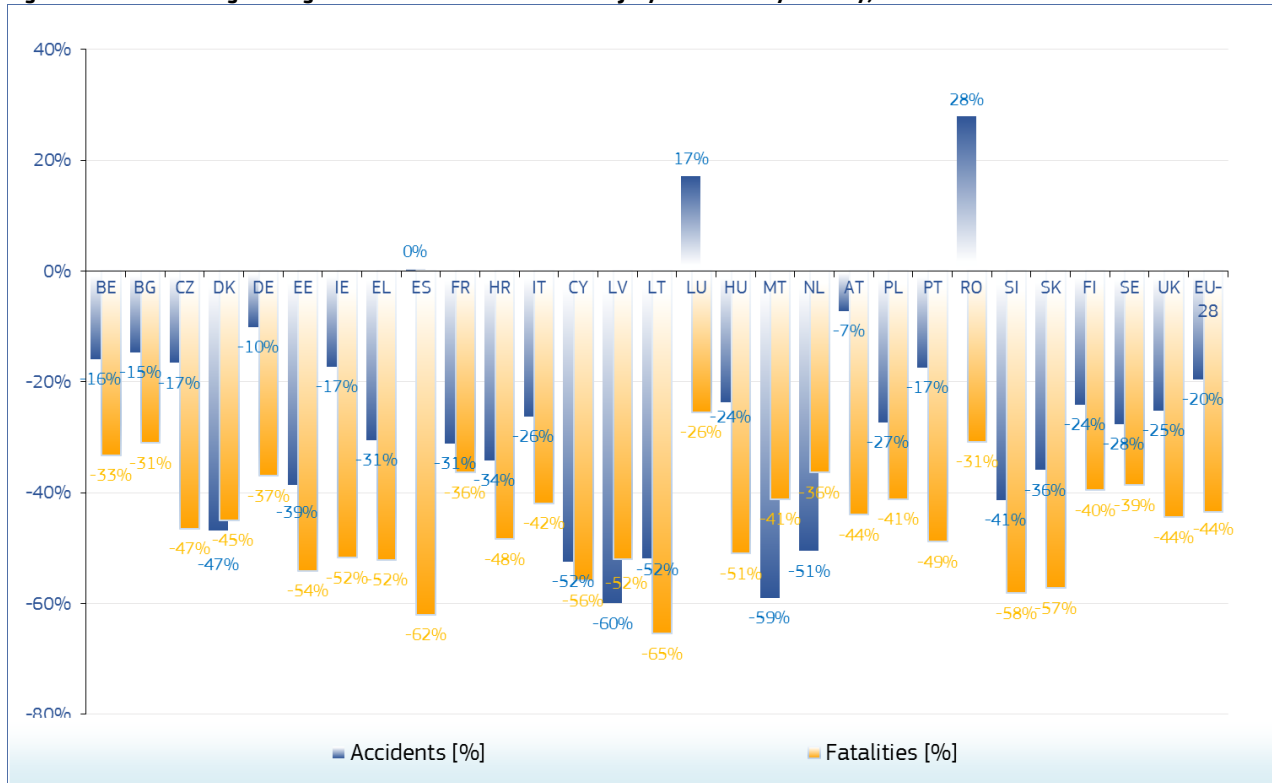
Annual Accident Report 2016

Figure 2: Fatalities per million inhabitants in the EU, 2014 compared to 2005



Source: CARE (EU road accidents database) or national publications
Last update: May 2016

Figure 3: Percentage change in number of fatalities and injury accidents by country, 2014 and 2005



Source: CARE (EU road accidents database) or national publications
Last update: May 2016

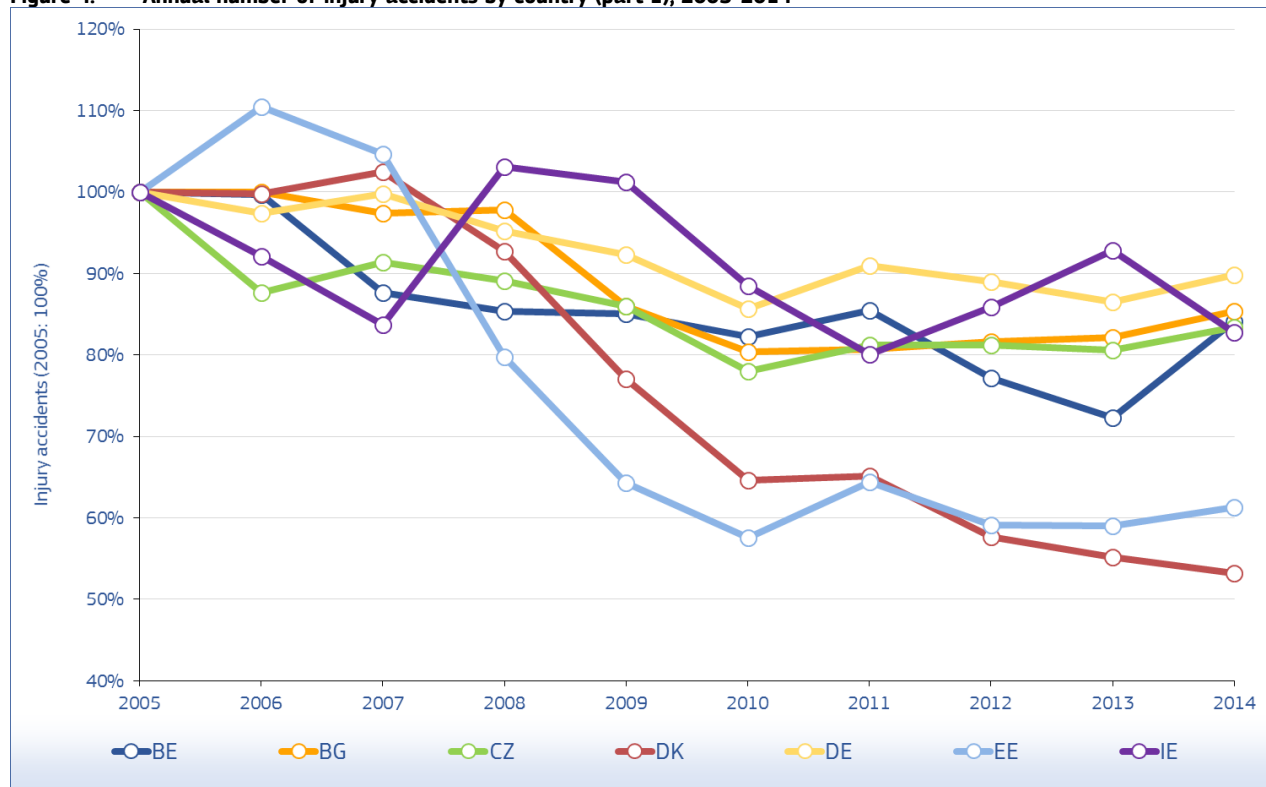
Table 1: Annual number of injury accidents by country, 2005-2014

	2005	2006	2007	2008	2009	2010	2011	2012	2013	2014
BE	49.307	49.171	43.239	42.115	41.944	40.569	42.119	38.057	35.632	41.481
BG	8.224	8.222	8.010	8.047	7.068	6.610	6.638	6.717	6.759	7.018
CZ	25.239	22.115	23.060	22.481	21.706	19.675	20.486	20.503	20.342	21.054
DK	5.413	5.403	5.549	5.020	4.174	3.498	3.525	3.124	2.985	2.881
DE	336.618	327.984	335.845	320.614	310.667	288.297	306.266	299.637	291.105	302.435
EE	2.341	2.585	2.449	1.868	1.506	1.347	1.508	1.383	1.382	1.436
IE	6.533	6.018	5.467	6.736	6.615	5.779	5.230	5.610	6.067	5.405
EL	16.914	16.190	15.499	15.083	14.789	15.032	13.849	12.398	12.109	11.752
ES	91.187	99.779	100.508	93.161	88.251	85.503	83.027	83.115	89.519	91.570
FR	84.525	80.309	81.272	74.487	72.315	67.288	65.024	60.437	56.812	58.191
HR	15.679	16.706	18.033	16.290	15.731	13.274	13.229	11.774	11.228	10.323
IT	240.011	238.124	230.871	218.963	215.430	212.997	205.638	188.228	181.660	177.031
CY	1.594	1.757	1.468	1.392	1.197	1.198	1.058	919	774	758
LV	9.310	8.986	9.865	8.894	3.160	3.193	3.386	3.358	3.489	3.728
LT	6.772	6.588	6.448	4.796	3.827	3.530	3.266	3.392	3.391	3.256
LU	775	805	954	927	869	787	962	1.019	949	908
HU	20.777	20.977	20.634	19.174	17.863	16.308	15.827	15.174	15.691	15.847
MT	848	894	942	764	636	577	348	-	-	-
NL	27.007	24.527	25.819	23.708	19.378	10.778	5.134	4.968	9.522	13.358
AT	40.896	39.884	41.096	39.173	37.925	35.348	35.129	40.831	38.502	37.957
PL	48.100	46.876	49.536	49.054	44.195	38.832	40.069	37.046	35.847	34.970
PT	37.066	35.680	35.311	33.613	35.484	35.426	32.541	29.867	30.339	30.604
RO	19.819	21.905	24.661	29.307	28.612	25.995	26.647	26.928	24.827	25.355
SI	10.509	11.620	11.640	9.165	8.717	7.659	7.257	6.857	6.568	6.168
SK	7.903	7.988	8.483	8.416	8.415	8.119	5.378	5.007	4.729	5.064
FI	7.020	6.740	6.657	6.881	6.414	6.072	6.408	5.725	5.334	5.324
SE	18.094	18.213	18.548	18.462	18.027	16.627	16.274	16.636	14.942	13.091
UK	203.712	194.789	188.105	176.814	169.805	160.080	157.068	151.346	144.480	152.407
EU	1.342.193	1.320.835	1.319.969	1.255.405	1.204.720	1.130.398	1.123.291	1.080.404	1.055.332	1.079.720
Yearly Change		-1,6%	-0,1%	-4,9%	-4,0%	-6,2%	-0,6%	-3,8%	-2,3%	2,3%
IS	671	886	1.131	1.071	878	876	837	732	806	805
LI	435	448	420	402	358	366	327	405	468	0
NO	7.884	7.672	7.973	7.479	6.726	6.229	5.798	5.783	4.957	4.796
CH	21.333	21.151	21.550	20.400	20.171	19.296	18.678	17.847	17.216	17.574

Source: CARE (EU road accidents database) or national publications
Last update: May 2016

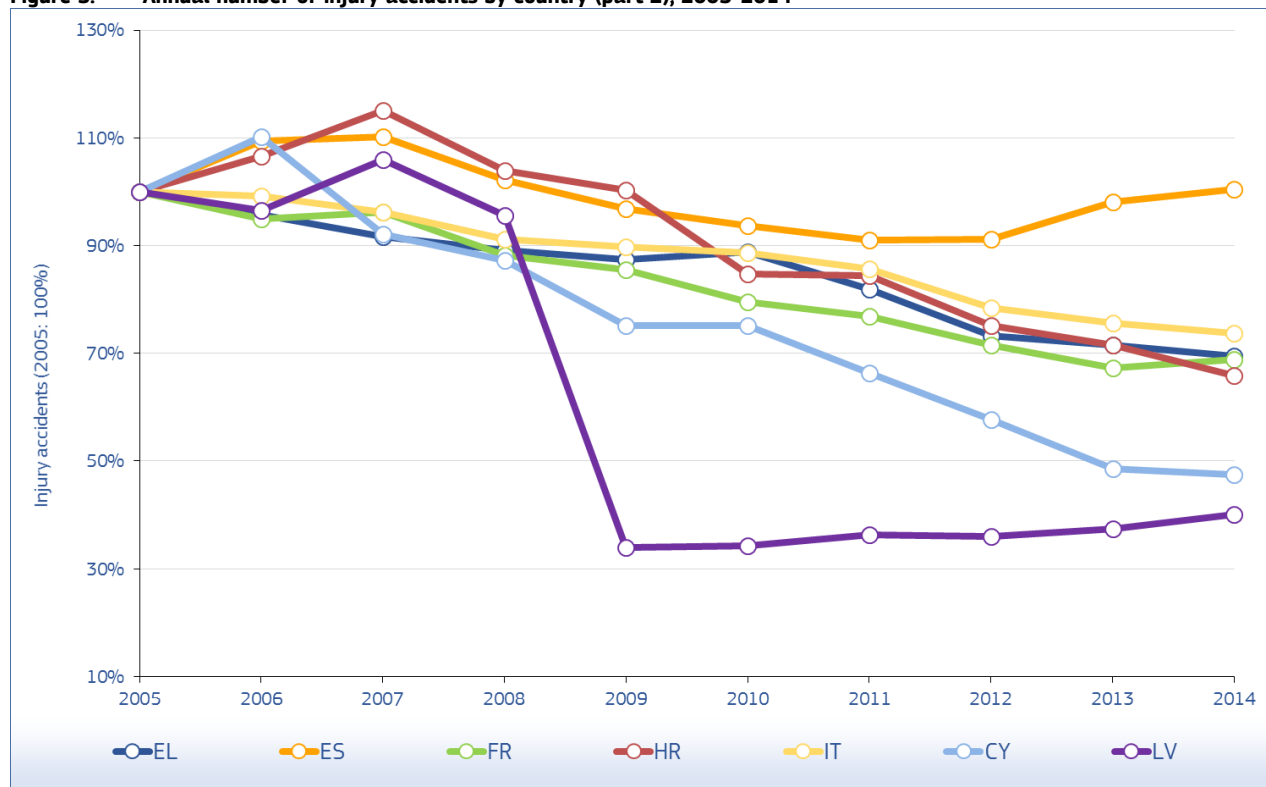
Annual Accident Report 2016

Figure 4: Annual number of injury accidents by country (part 1), 2005-2014



Source: CARE (EU road accidents database) or national publications
Last update: May 2016

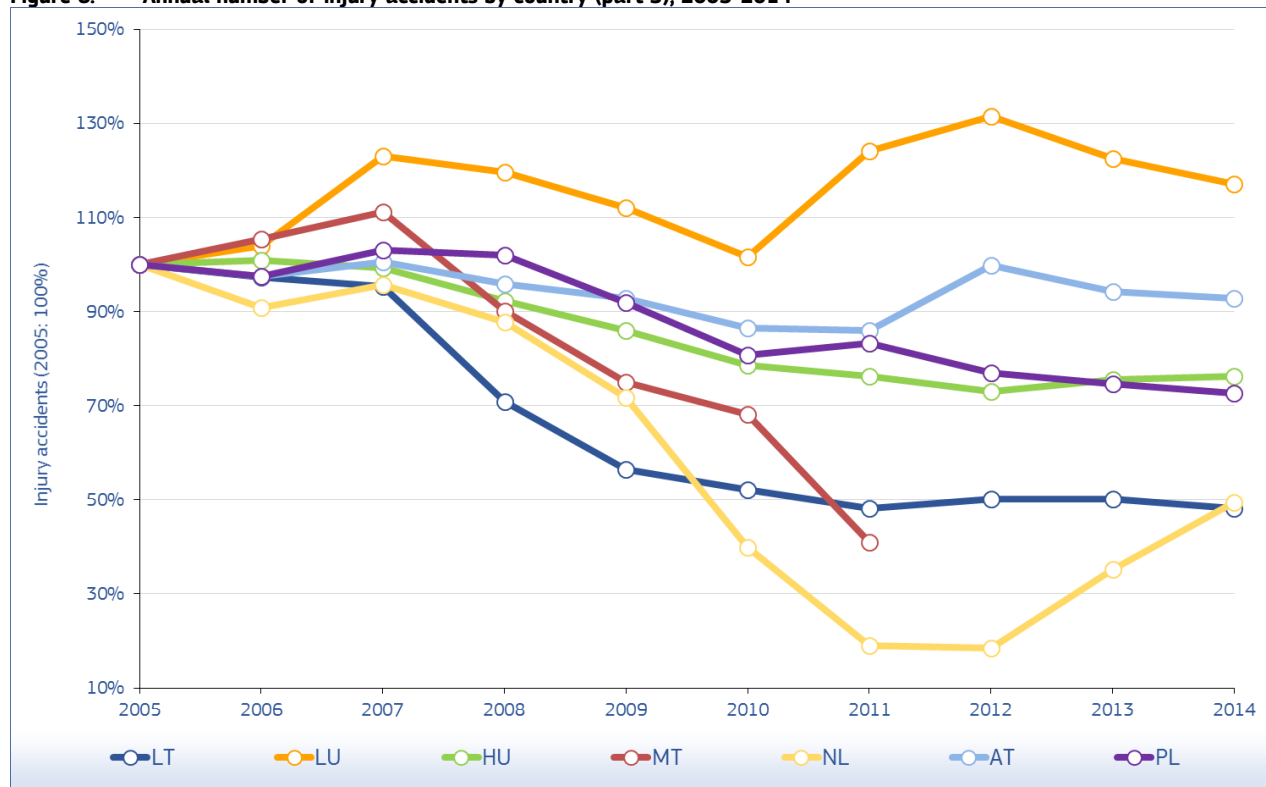
Figure 5: Annual number of injury accidents by country (part 2), 2005-2014



Source: CARE (EU road accidents database) or national publications
Last update: May 2016

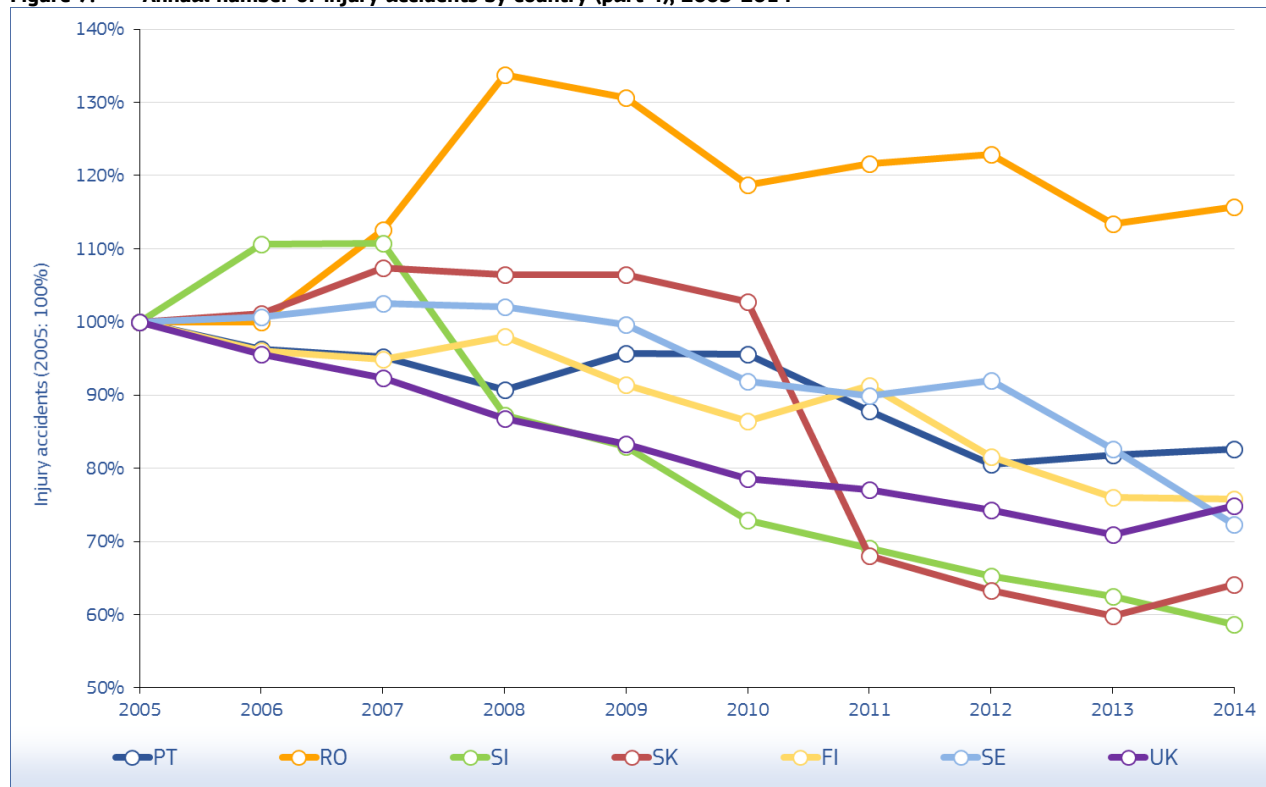
Annual Accident Report 2016

Figure 6: Annual number of injury accidents by country (part 3), 2005-2014



Source: CARE (EU road accidents database) or national publications
 Last update: May 2016

Figure 7: Annual number of injury accidents by country (part 4), 2005-2014



Source: CARE (EU road accidents database) or national publications
 Last update: May 2016

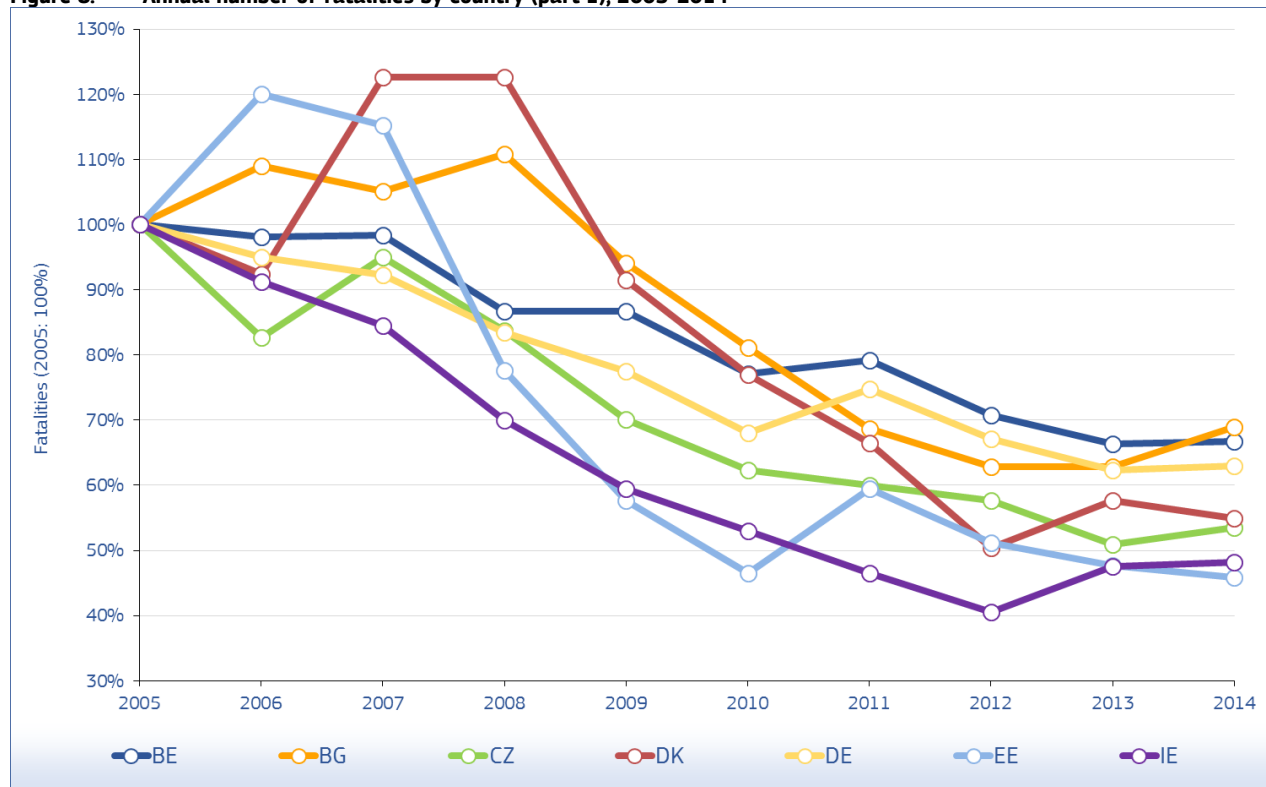
Table 2: Annual number of fatalities by country, 2005-2014

	2005	2006	2007	2008	2009	2010	2011	2012	2013	2014
BE	1.089	1.069	1.071	944	944	840	862	770	723	727
BG	957	1.043	1.006	1.061	901	776	657	601	601	660
CZ	1.286	1.063	1.221	1.076	901	802	772	742	655	688
DK	331	306	406	406	303	255	220	167	191	182
DE	5.361	5.091	4.949	4.477	4.152	3.648	4.009	3.600	3.339	3.377
EE	170	204	196	132	98	79	101	87	81	78
IE	400	365	338	280	238	212	186	162	190	193
EL	1.658	1.657	1.612	1.555	1.456	1.258	1.141	988	879	793
ES	4.442	4.104	3.823	3.100	2.714	2.479	2.060	1.903	1.680	1.688
FR	5.318	4.709	4.620	4.275	4.273	3.992	3.963	3.653	3.268	3.384
HR	597	614	619	664	548	426	418	390	368	308
IT	5.818	5.669	5.131	4.725	4.237	4.114	3.860	3.753	3.401	3.381
CY	102	86	89	82	71	60	71	51	44	45
LV	442	407	419	316	254	218	179	177	179	212
LT	773	760	740	499	370	299	296	302	256	267
LU	47	43	46	35	48	32	33	34	45	35
HU	1.278	1.303	1.232	996	822	740	638	606	591	626
MT	17	11	14	15	21	15	21	9	18	10
NL	750	730	709	677	644	537	546	562	476	477
AT	768	730	691	679	633	552	523	531	455	430
PL	5.444	5.243	5.583	5.437	4.572	3.908	4.189	3.571	3.357	3.202
PT	1.247	969	974	885	840	937	891	718	637	638
RO	2.629	2.587	2.800	3.061	2.796	2.377	2.018	2.042	1.861	1.818
SI	258	262	293	214	171	138	141	130	125	108
SK	606	614	667	622	380	353	328	352	251	259
FI	379	336	380	344	279	272	292	255	258	229
SE	440	445	471	397	358	266	319	285	260	270
UK	3.336	3.298	3.059	2.645	2.337	1.905	1.960	1.802	1.770	1.854
EU	45.943	43.718	43.159	39.599	35.361	31.490	30.694	28.243	25.959	25.939
Yearly Change		-4,8%	-1,3%	-8,2%	-10,7%	-10,9%	-2,5%	-8,0%	-8,1%	-0,1%
IS	19	31	15	12	17	8	12	9	15	4
LI	2	0	0	1	1	0	2	1	2	-
NO	224	242	233	255	212	208	168	145	187	147
CH	409	370	384	357	349	327	320	339	269	243

Source: CARE (EU road accidents database) or national publications
Last update: May 2016

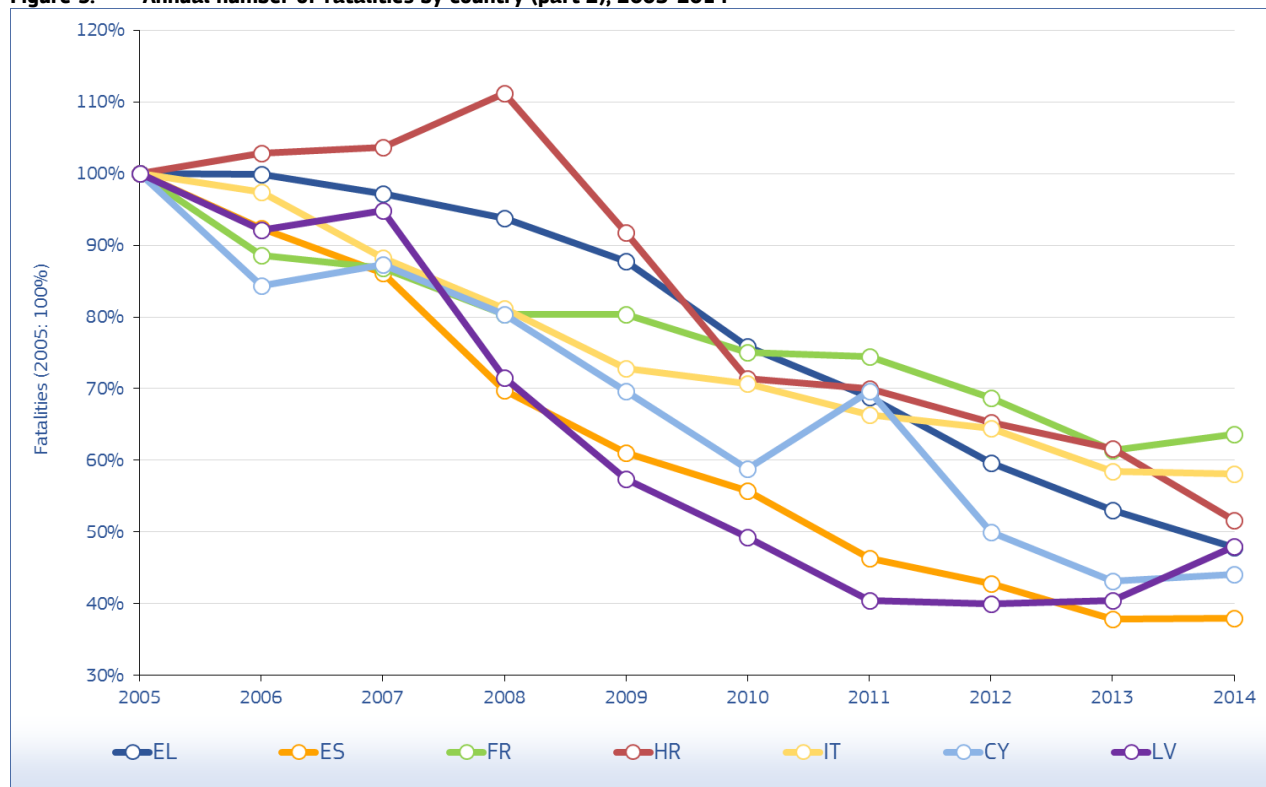
Annual Accident Report 2016

Figure 8: Annual number of fatalities by country (part 1), 2005-2014



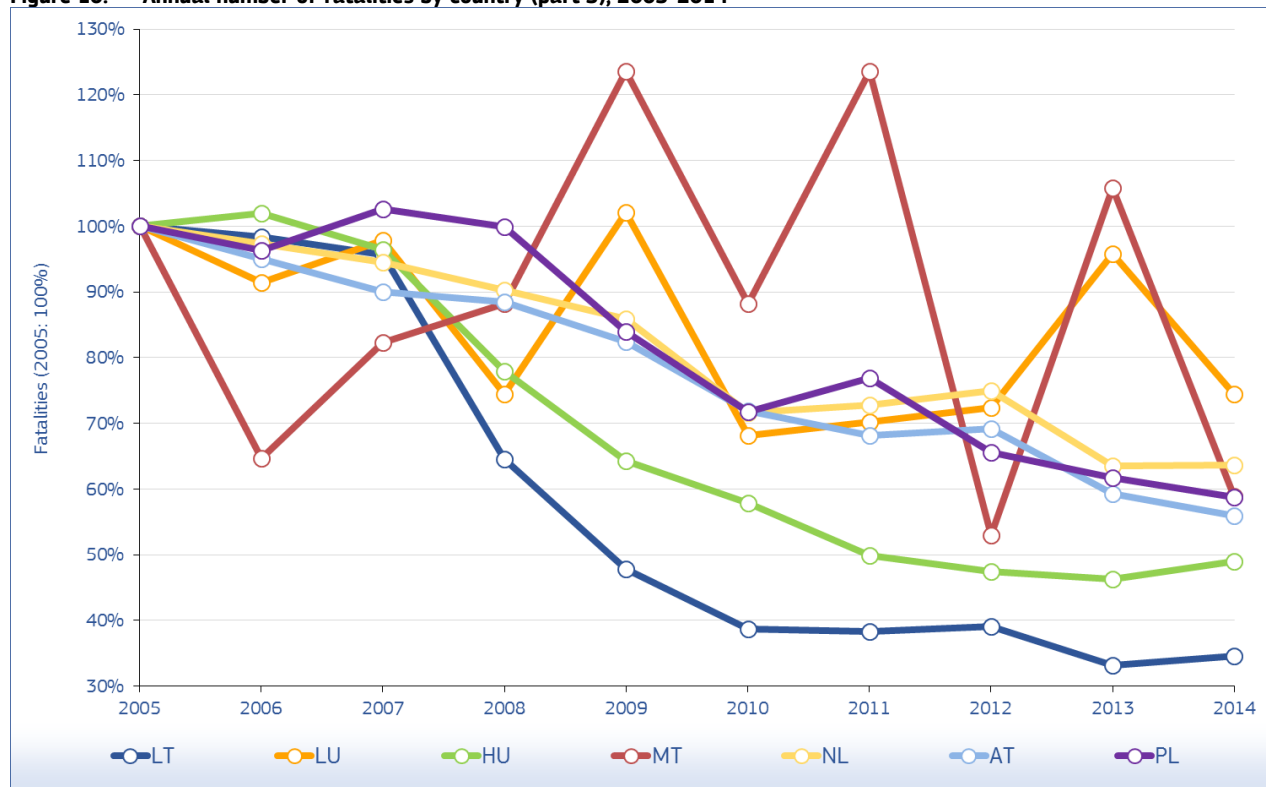
Source: CARE (EU road accidents database) or national publications
Last update: May 2016

Figure 9: Annual number of fatalities by country (part 2), 2005-2014



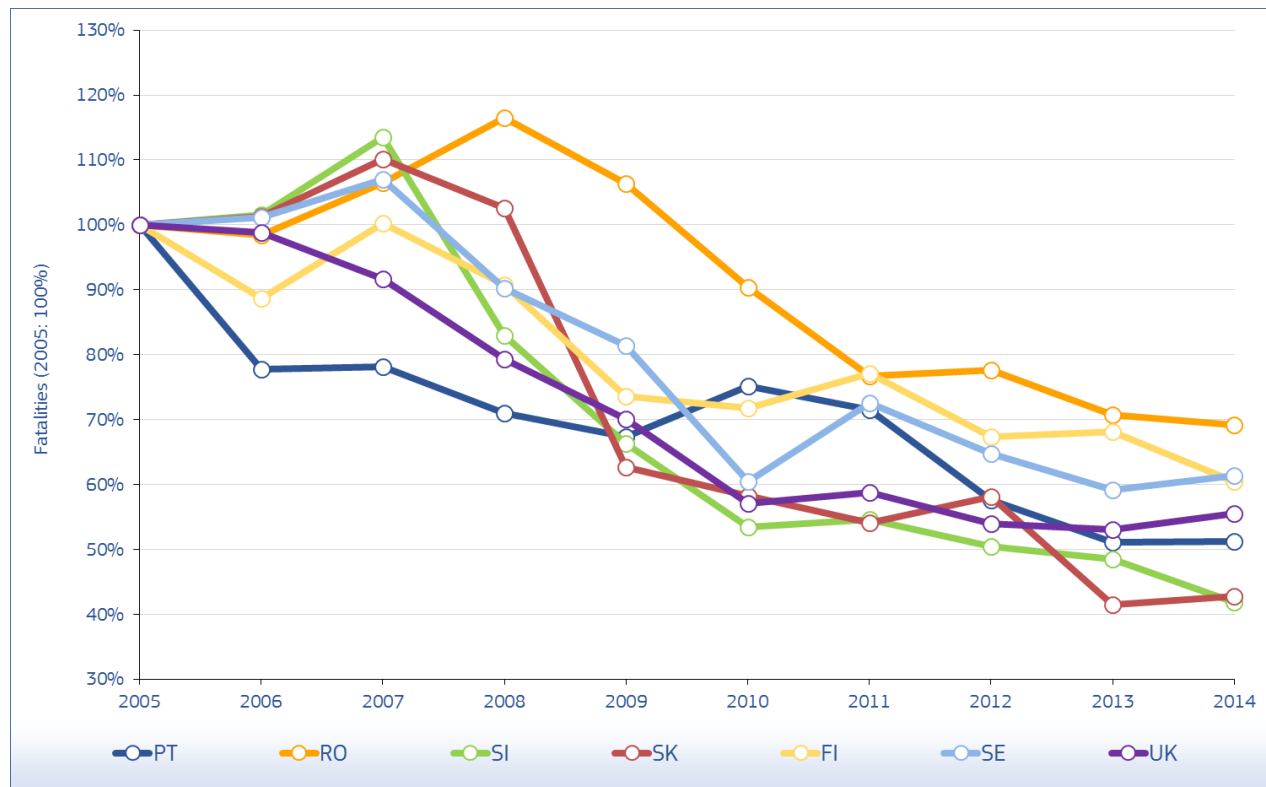
Source: CARE (EU road accidents database) or national publications
Last update: May 2016

Figure 10: Annual number of fatalities by country (part 3), 2005-2014



Source: CARE (EU road accidents database) or national publications
 Last update: May 2016

Figure 11: Annual number of fatalities by country (part 4), 2005-2014



Source: CARE (EU road accidents database) or national publications
 Last update: May 2016

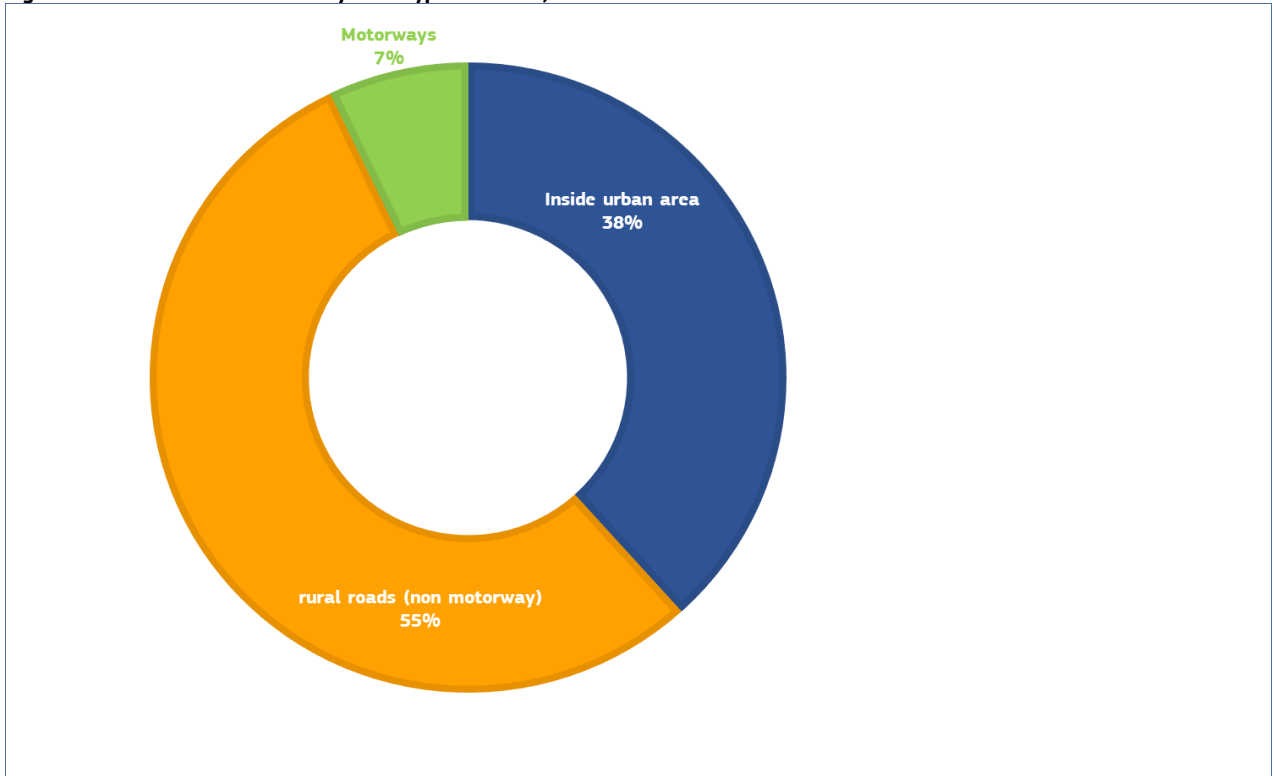
Table 3: Annual number of fatal accidents by country, 2005-2014

	2005	2006	2007	2008	2009	2010	2011	2012	2013	2014
BE	997	1.001	1.006	869	884	786	799	720	676	685
BG	-	-	-	937	748	-	-	-	-	-
CZ	1.150	957	1.111	983	846	742	713	687	606	623
DK	305	284	366	378	271	231	208	156	173	168
DE	4.984	4.717	4.609	4.117	3.867	3.387	3.724	3.375	3.131	3.187
EE	151	183	174	114	83	70	93	82	74	72
IE	361	321	309	254	220	185	172	152	179	-
EL	1.482	1.501	1.442	1.411	1.296	1.142	1.051	908	814	739
ES	3.377	3.119	2.957	2.384	2.117	1.953	1.816	1.709	1.488	1.512
FR	4.857	4.326	4.265	3.933	3.956	3.706	3.647	3.386	3.020	3.146
HR	-	-	548	585	493	402	385	355	328	284
IT	5.271	5.178	4.718	4.358	3.973	3.871	3.616	3.515	3.161	3.175
CY	94	81	88	79	64	56	67	51	41	44
LV	393	366	376	285	227	198	164	161	169	182
LT	-	-	-	-	-	-	-	-	230	243
LU	42	41	43	34	44	29	30	34	41	31
HU	1.139	1.173	1.107	891	752	649	563	541	540	573
MT	12	11	12	9	11	13	-	-	-	-
NL	708	678	669	630	597	500	520	532	456	455
AT	712	664	644	629	576	515	492	501	435	411
PL	4.878	4.663	5.028	4.862	4.144	3.504	3.775	3.246	3.062	2.954
PT	988	786	765	721	673	857	826	667	585	603
RO	2.293	2.274	2.462	2.655	2.464	2.103	1.818	1.833	1.657	1.621
SI	230	233	263	200	154	127	129	122	116	-
SK	528	547	599	555	336	345	-	-	262	-
FI	343	324	349	321	255	241	273	235	244	208
SE	406	404	426	355	336	249	292	258	247	254
UK	3.040	3.036	2.819	2.439	2.161	1.782	1.854	1.682	1.663	1.732
EU	40.456	38.583	38.322	35.218	31.778	28.621	28.363	26.161	24.159	24.220
Yearly Change		-4,6%	-0,7%	-8,1%	-9,8%	-9,9%	-0,9%	-7,8%	-7,7%	0,3%
IS	16	28	15	12	15	7	12	9	14	3
LI	-	-	-	-	-	-	-	-	-	-
NO	202	226	209	237	186	190	158	139	170	135
CH	373	340	361	336	335	313	312	301	257	229

Source: CARE (EU road accidents database) or national publications
Last update: May 2016

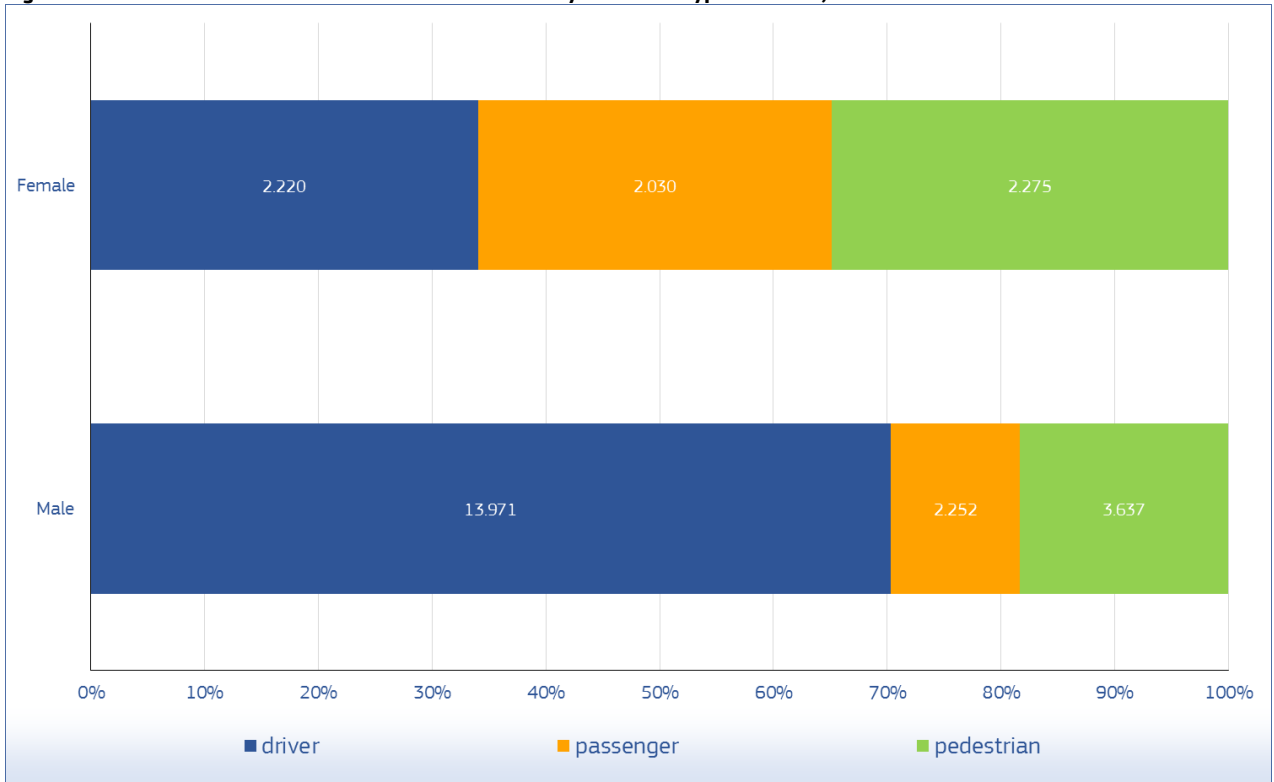
2.2 Interesting Details

Figure 12: Share of fatalities by area type in the EU, 2014



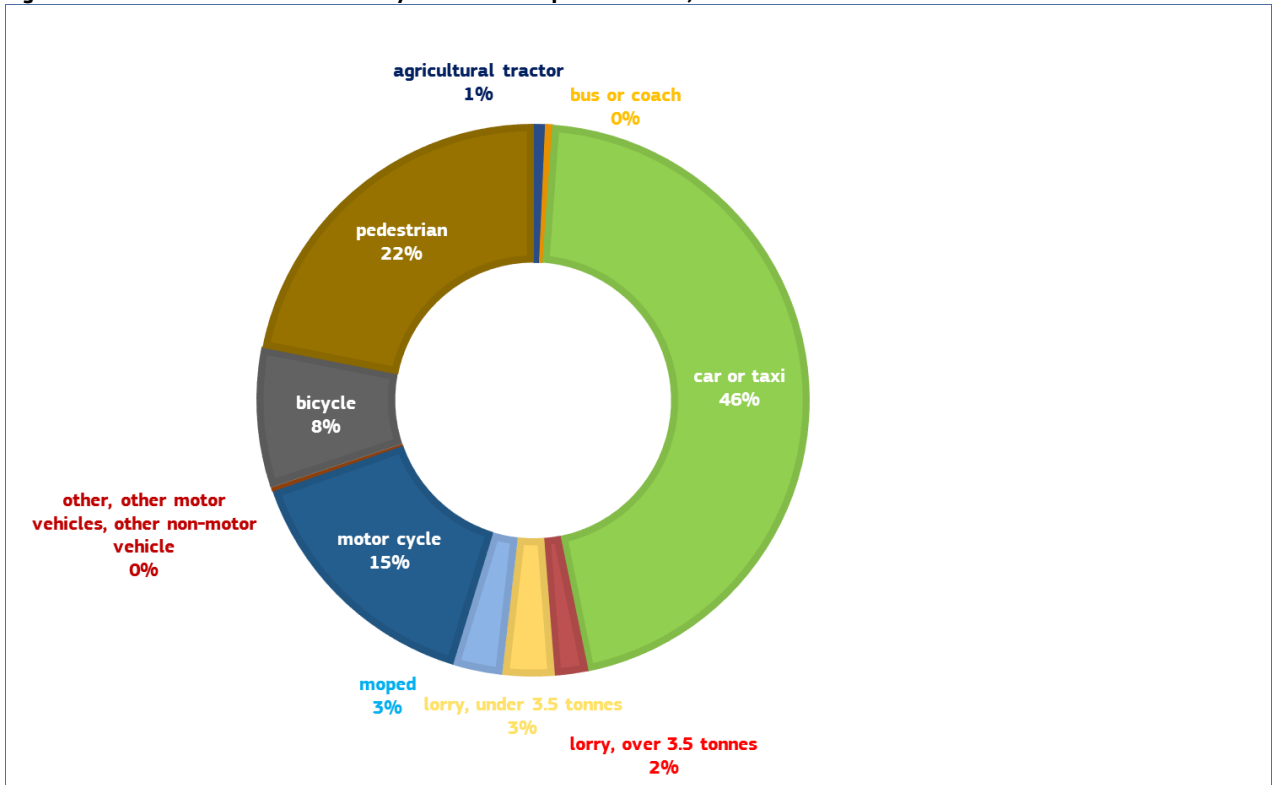
Source: CARE (EU road accidents database) or national publications
 Last update: May 2016

Figure 13: Distribution of male and female fatalities by road user type in the EU, 2014



Source: CARE (EU road accidents database) or national publications
 Last update: May 2016

Figure 14: Distribution of fatalities by mode of transport in the EU, 2014

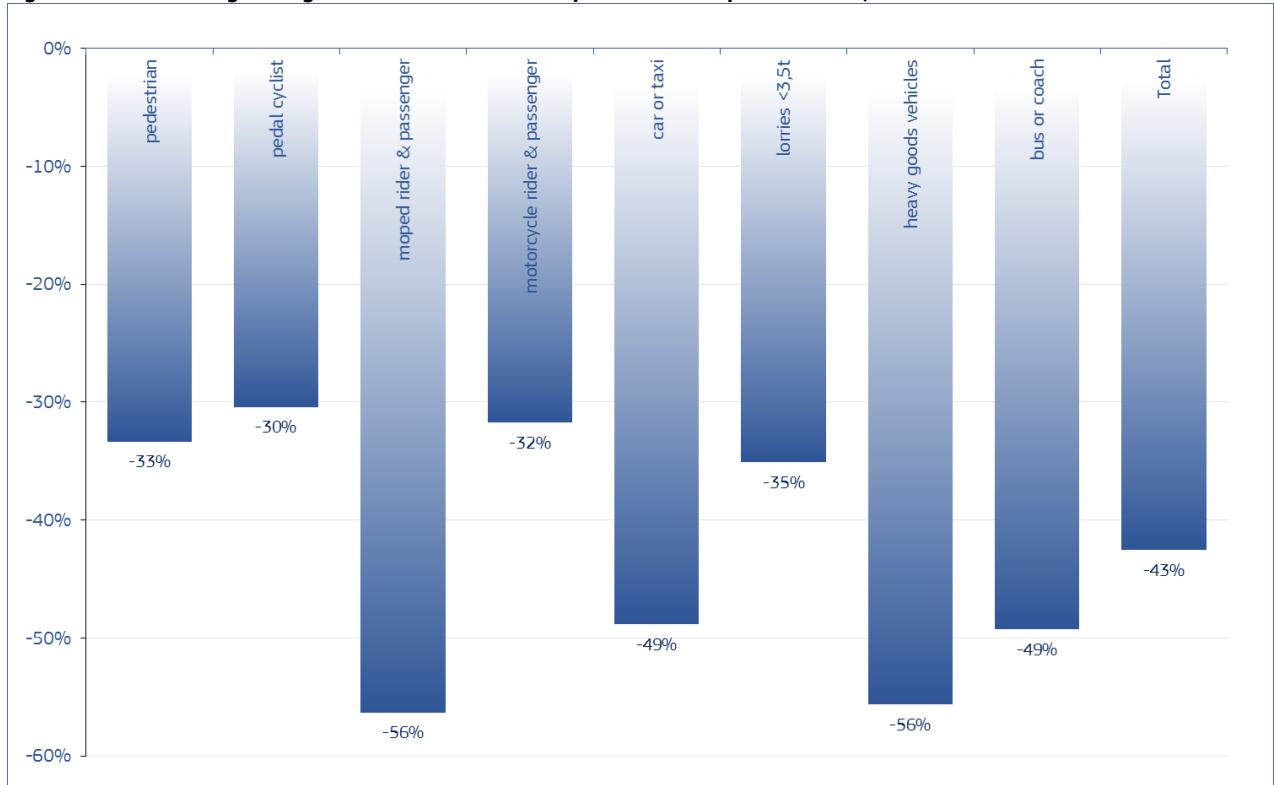


Source: CARE (EU road accidents database) or national publications
 Last update: May 2016

3 Time Series – last 10 years in detail

3.1 Time series related to mode of transport

Figure 15: Percentage change in number of fatalities by mode of transport in the EU, 2014 and 2005



Source: CARE (EU road accidents database) or national publications
 Last update: May 2016

Annual Accident Report 2016

Table 4: Annual number of pedestrian fatalities by country, 2005-2014

	2005	2006	2007	2008	2009	2010	2011	2012	2013	2014
BE	108	122	104	99	101	106	113	104	99	106
BG	-	-	-	278	198	-	-	-	-	-
CZ	298	202	232	238	176	168	176	163	162	130
DK	44	60	68	58	52	44	33	31	34	22
DE	686	711	695	653	591	476	614	527	561	527
EE	50	64	38	41	23	14	26	29	23	26
IE	72	72	81	49	40	44	47	29	31	-
EL	234	267	255	248	202	179	223	170	151	125
ES	680	614	591	502	470	471	380	370	371	336
FR	635	535	561	548	496	485	519	489	465	499
HR	0	0	124	136	103	105	71	72	69	73
IT	786	758	627	646	667	621	589	576	551	578
CY	23	19	17	16	9	13	13	10	8	10
LV	174	153	158	105	82	79	60	62	70	71
LT	-	-	-	-	-	-	-	-	96	109
LU	2	10	7	6	12	1	6	6	5	3
HU	289	296	288	251	186	192	124	156	147	152
MT	6	4	3	1	-	-	-	-	-	-
NL	83	66	86	56	63	62	65	64	51	50
AT	97	110	108	102	101	98	87	81	82	71
PL	1.756	1.802	1.951	1.882	1.467	1.236	1.408	1.157	1.140	1.116
PT	214	156	156	155	148	195	199	159	144	145
RO	978	1.034	1.113	1.067	1.015	868	747	728	726	697
SI	37	36	32	39	24	26	21	19	20	-
SK	174	214	217	204	113	126	-	-	81	-
FI	45	49	48	53	30	35	41	29	34	36
SE	50	55	58	45	44	31	53	50	42	52
UK	699	697	663	591	524	415	466	429	405	464
EU	8.594	8.480	8.655	8.165	7.034	6.385	6.502	5.886	5.767	5.729
Yearly Change		-1,3%	2,1%	-5,7%	-13,9%	-9,2%	1,8%	-9,5%	-2,0%	-0,7%
IS	1	4	1	0	2	2	4	2	1	0
LI	-	-	-	-	-	-	-	-	-	-
NO	32	36	23	31	26	24	16	22	18	18
CH	69	76	79	59	60	75	69	75	69	43

Source: CARE (EU road accidents database) or national publications
Last update: May 2016

Annual Accident Report 2016

Table 5: Annual number of pedal cyclist rider and passenger fatalities by country, 2005-2014

	2005	2006	2007	2008	2009	2010	2011	2012	2013	2014
BE	71	92	90	86	89	70	70	69	73	76
BG	-	-	-	35	29	-	-	-	-	-
CZ	115	110	116	93	84	80	63	78	74	68
DK	41	31	54	54	25	26	30	22	33	30
DE	575	486	425	456	462	381	399	406	354	396
EE	7	13	13	9	7	0	0	0	0	0
IE	10	9	15	13	7	5	9	8	5	-
EL	18	21	16	22	15	23	13	21	15	19
ES	82	72	90	59	57	67	48	74	70	75
FR	180	181	142	148	162	147	141	164	147	159
HR	-	-	28	47	29	28	28	21	23	19
IT	335	311	352	288	295	265	282	292	251	273
CY	1	2	3	6	2	2	2	1	2	1
LV	31	33	18	15	26	13	15	18	13	16
LT	-	-	-	-	-	-	-	-	18	19
LU	1	0	0	0	2	1	2	0	0	0
HU	152	153	158	109	103	92	85	84	68	98
MT	0	0	0	0	0	0	-	-	-	-
NL	151	179	147	145	138	119	144	145	112	118
AT	47	48	37	62	39	32	42	52	52	45
PL	603	509	498	433	371	280	314	300	306	286
PT	48	40	34	42	29	33	45	32	29	35
RO	206	198	179	179	157	182	140	154	161	151
SI	19	15	17	17	18	17	16	12	16	-
SK	56	52	61	46	22	27	-	-	21	-
FI	43	29	22	18	20	26	19	19	20	27
SE	38	26	33	30	20	21	21	28	14	33
UK	152	147	138	117	104	111	109	120	113	116
EU	3.062	2.838	2.739	2.547	2.329	2.095	2.111	2.188	2.019	2.131
Yearly Change		-7,3%	-3,5%	-7,0%	-8,6%	-10,0%	0,8%	3,6%	-7,7%	5,5%
IS	0	0	0	0	0	0	0	0	0	0
LI	-	-	-	-	-	-	-	-	-	-
NO	7	8	7	10	9	5	12	12	10	12
CH	37	35	30	27	54	34	39	36	21	34

Source: CARE (EU road accidents database) or national publications
Last update: May 2016

Annual Accident Report 2016

Table 6: Annual number of moped rider and passenger fatalities by country, 2005-2014

	2005	2006	2007	2008	2009	2010	2011	2012	2013	2014
BE	30	36	26	32	25	22	20	15	13	17
BG	-	-	-	9	5	-	-	-	-	-
CZ	8	3	3	2	9	7	7	7	6	8
DK	29	24	48	30	15	11	14	14	11	13
DE	107	107	100	110	99	74	70	93	73	87
EE	2	2	4	6	3	0	1	1	0	0
IE	-	-	-	-	-	-	-	-	-	-
EL	58	57	43	41	28	36	34	35	25	20
ES	312	303	233	181	156	99	73	67	56	54
FR	356	317	324	291	299	248	220	179	159	165
HR	-	-	20	27	15	15	10	16	14	11
IT	385	346	358	292	212	206	165	127	125	112
CY	9	5	8	8	4	3	3	3	0	4
LV	5	6	4	4	1	4	5	3	3	6
LT	-	-	-	-	-	-	-	-	4	1
LU	0	0	1	0	0	0	0	0	0	0
HU	40	42	31	26	23	19	31	25	24	17
MT	-	-	-	-	-	-	-	-	-	-
NL	56	63	60	51	47	32	36	40	41	32
AT	41	39	24	25	30	18	18	19	15	16
PL	53	57	59	87	68	83	87	82	62	71
PT	106	97	71	71	58	77	71	57	51	43
RO	20	45	81	150	122	114	87	99	39	30
SI	5	12	12	8	3	7	2	3	4	-
SK	-	-	-	-	-	-	-	-	10	-
FI	4	13	11	13	11	9	10	7	5	3
SE	8	15	14	11	11	8	11	8	3	8
UK	23	29	18	21	16	10	10	12	4	6
EU	1.700	1.661	1.575	1.510	1.274	1.121	1.004	931	752	743
Yearly Change		-2,3%	-5,1%	-4,2%	-15,6%	-12,0%	-10,4%	-7,3%	-19,2%	-1,2%
IS	0	0	0	0	0	0	1	0	0	0
LI	-	-	-	-	-	-	-	-	-	-
NO	4	3	7	5	2	0	4	4	3	2
CH	6	11	7	9	8	4	4	3	8	1

Source: CARE (EU road accidents database) or national publications
Last update: May 2016

Annual Accident Report 2016

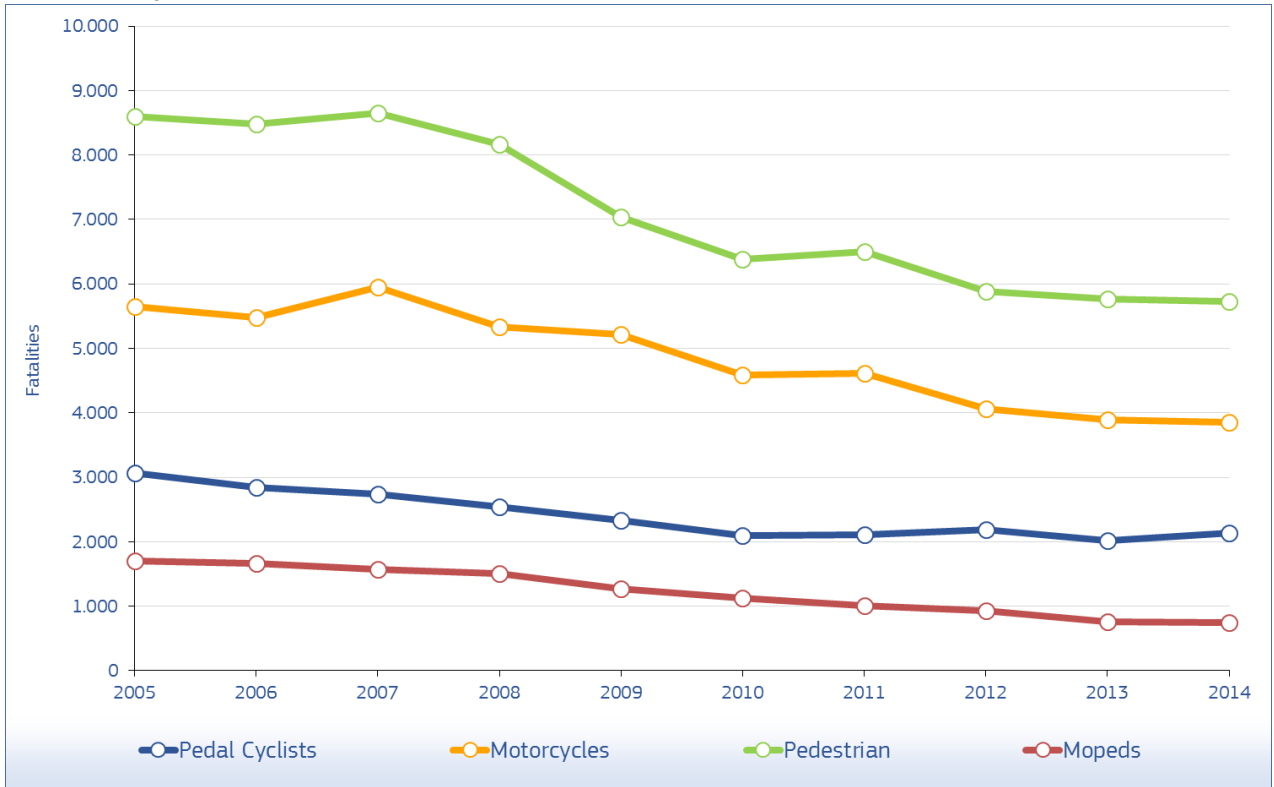
Table 7: Annual number of motorcycle rider and passenger fatalities by country, 2005-2014

	2005	2006	2007	2008	2009	2010	2011	2012	2013	2014
BE	123	130	139	108	137	102	127	87	102	85
BG	-	-	-	67	48	-	-	-	-	-
CZ	116	113	136	121	85	92	77	86	66	88
DK	16	21	36	40	27	22	23	10	15	18
DE	875	793	807	656	650	635	708	586	568	587
EE	5	5	10	1	2	0	0	0	0	0
IE	56	29	33	29	25	17	18	19	26	-
EL	399	440	420	394	405	367	305	282	271	278
ES	472	488	640	484	437	386	348	304	302	287
FR	892	789	853	817	908	734	786	692	658	649
HR	-	-	96	100	81	51	76	62	49	44
IT	1.120	1.127	1.182	1.085	1.037	950	923	847	728	704
CY	14	20	16	16	19	18	13	11	15	9
LV	11	10	10	14	10	17	6	7	10	10
LT	-	-	-	-	-	-	-	-	15	13
LU	6	8	5	9	7	1	3	5	8	8
HU	100	89	112	91	73	49	52	39	58	58
MT	3	2	4	3	2	3	-	-	-	-
NL	77	57	64	67	68	60	50	53	29	51
AT	98	95	96	91	87	68	67	68	87	76
PL	157	164	215	262	290	259	292	261	253	237
PT	188	137	145	116	115	126	116	104	78	91
RO	23	35	73	90	74	59	69	62	52	45
SI	33	42	41	40	28	17	25	18	17	-
SK	45	37	54	39	34	27	-	-	-	-
FI	32	26	32	36	27	18	29	21	24	17
SE	46	55	60	51	47	37	46	31	40	31
UK	561	583	596	488	472	403	359	320	337	347
EU	5.646	5.473	5.957	5.330	5.210	4.581	4.611	4.068	3.886	3.854
Yearly Change		-3,1%	8,8%	-10,5%	-2,3%	-12,1%	0,6%	-11,8%	-4,5%	-0,8%
IS	1	3	3	1	2	1	0	0	1	0
LI	-	-	-	-	-	-	-	-	-	-
NO	31	34	33	32	27	26	13	17	21	20
CH	86	69	82	83	78	68	68	74	55	53

Source: CARE (EU road accidents database) or national publications
Last update: May 2016

Annual Accident Report 2016

Figure 16: Annual number of fatalities by mode of transport (drivers and passengers, vulnerable modes) in the EU, 2005-2014



Source: CARE (EU road accidents database) or national publications
 Last update: May 2016

Table 8: Annual number of car and taxi driver and passenger fatalities by country, 2005-2014

	2005	2006	2007	2008	2009	2010	2011	2012	2013	2014
BE	624	589	550	479	464	443	457	383	340	379
BG	-	-	-	623	570	-	-	-	-	-
CZ	679	567	661	573	497	403	404	368	308	347
DK	169	138	168	196	164	135	106	81	79	89
DE	2.833	2.683	2.625	2.368	2.110	1.840	1.986	1.791	1.588	1.579
EE	88	106	122	69	54	44	56	42	41	33
IE	222	226	171	160	146	129	95	89	107	-
EL	816	722	771	708	680	545	474	383	347	289
ES	2.389	2.096	1.824	1.494	1.260	1.194	977	871	716	722
FR	3.065	2.627	2.466	2.205	2.162	2.117	2.062	1.881	1.615	1.664
HR	-	-	309	303	284	205	215	186	195	141
IT	2.830	2.781	2.320	2.115	1.793	1.832	1.673	1.695	1.491	1.497
CY	45	32	37	26	24	19	31	18	16	15
LV	201	182	203	167	116	91	78	72	71	91
LT	-	-	-	-	-	-	-	-	108	118
LU	38	23	27	20	26	27	21	22	30	24
HU	620	630	555	448	386	330	268	253	254	256
MT	3	5	4	4	12	9	-	-	-	-
NL	337	323	299	299	288	219	209	218	180	171
AT	432	384	378	367	325	291	289	282	194	191
PL	2.526	2.392	2.582	2.540	2.179	1.853	1.897	1.615	1.448	1.346
PT	495	375	417	358	301	367	331	255	214	223
RO	1.069	992	1.096	1.324	1.168	973	780	798	721	724
SI	107	96	126	82	59	44	46	53	40	-
SK	294	282	293	292	182	171	-	-	148	-
FI	231	203	241	202	165	159	172	147	152	121
SE	273	261	279	234	219	151	159	142	144	122
UK	1.744	1.687	1.489	1.312	1.123	859	911	829	815	835
EU	23.170	21.442	20.744	19.076	16.865	15.128	14.532	13.309	11.941	11.851
Yearly Change		-7,5%	-3,3%	-8,0%	-11,6%	-10,3%	-3,9%	-8,4%	-10,3%	-0,8%
IS	15	20	11	10	9	4	7	6	11	3
LI	-	-	-	-	-	-	-	-	-	-
NO	130	141	138	151	127	127	102	73	105	72
CH	178	156	162	156	136	129	119	104	103	97

Source: CARE (EU road accidents database) or national publications
Last update: May 2016

Table 9: Annual number of heavy goods vehicles >3,5t fatalities by country, 2005-2014

	2005	2006	2007	2008	2009	2010	2011	2012	2013	2014
BE	16	16	25	25	20	13	15	17	13	14
BG	-	-	-	28	33	-	-	-	-	-
CZ	26	22	21	18	20	27	23	25	19	23
DK	2	2	4	2	3	2	1	0	1	1
DE	97	113	131	91	79	87	88	154	148	72
EE	7	6	3	3	6	1	0	1	2	3
IE	4	2	7	4	4	2	0	2	2	-
EL	15	23	14	19	7	14	10	11	7	12
ES	141	132	90	85	69	71	73	50	43	48
FR	90	87	68	76	54	65	67	56	57	56
HR	-	-	17	21	17	4	2	2	2	4
IT	254	251	203	219	173	53	50	46	43	46
CY	0	0	0	0	0	0	-	1	2	0
LV	6	13	12	3	6	0	2	4	3	5
LT	-	-	-	-	-	-	-	-	6	4
LU	0	2	4	0	0	1	0	0	2	0
HU	15	28	15	22	12	11	10	15	13	14
MT	0	0	0	1	0	0	-	-	-	-
NL	11	9	7	10	4	4	2	7	7	6
AT	11	15	11	3	9	7	6	4	6	9
PL	217	227	198	175	136	142	138	104	90	92
PT	31	18	25	17	29	12	14	16	18	8
RO	40	26	25	26	14	13	25	21	18	17
SI	3	2	4	0	0	1	1	0	1	-
SK	18	20	22	18	17	19	-	-	6	-
FI	6	7	7	5	6	9	5	10	6	4
SE	6	7	6	5	3	5	4	2	5	5
UK	59	41	54	24	15	30	29	30	22	14
EU	1.126	1.121	1.008	906	741	632	624	623	575	499
Yearly Change		-0,5%	-10,1%	-10,1%	-18,2%	-14,8%	-1,3%	-0,1%	-7,7%	-13,2%
IS	0	0	0	1	1	1	0	0	0	0
LI	-	-	-	-	-	-	-	-	-	-
NO	11	8	5	9	9	8	8	2	11	7
CH	4	1	4	4	2	2	1	1	3	2

Source: CARE (EU road accidents database) or national publications
Last update: May 2016

Annual Accident Report 2016

Table 10: Annual number of lorries <3,5t fatalities by country, 2005-2014

	2005	2006	2007	2008	2009	2010	2011	2012	2013	2014
BE	44	34	49	40	43	35	29	29	34	27
BG	-	-	-	-	-	-	-	-	-	-
CZ	36	31	45	27	25	18	15	7	15	16
DK	23	24	24	22	16	14	10	6	17	9
DE	116	122	84	92	85	75	86	-	-	71
EE	0	0	0	0	0	-	-	-	-	-
IE	18	16	25	16	13	8	17	10	12	-
EL	72	82	56	62	75	62	51	51	38	35
ES	244	262	234	189	170	116	99	98	69	111
FR	56	120	131	134	144	146	134	145	132	142
HR	-	-	-	-	-	5	10	15	2	5
IT	-	-	-	-	-	141	117	118	102	109
CY	9	4	4	8	12	5	4	4	1	4
LV	2	-	-	2	5	0	2	4	5	6
LT	-	-	-	-	-	-	-	-	1	2
LU	-	-	-	-	-	-	1	1	0	0
HU	44	36	47	33	28	24	30	20	17	25
MT	5	0	0	0	0	0	-	-	-	-
NL	20	21	35	31	24	22	18	16	15	7
AT	24	16	15	19	13	10	5	15	15	10
PL	-	-	-	-	-	-	-	-	-	-
PT	120	98	70	88	68	88	76	48	61	49
RO	116	124	105	114	87	73	64	72	61	67
SI	8	2	3	3	6	2	1	5	5	-
SK	9	3	2	2	1	1	-	-	10	-
FI	12	3	12	9	10	9	9	11	9	10
SE	11	9	9	11	7	7	10	16	5	8
UK	57	55	63	47	40	37	35	34	39	34
EU	1.194	1.212	1.162	1.097	1.021	900	825	822	736	774
Yearly Change		1,6%	-4,1%	-5,7%	-6,9%	-11,8%	-8,4%	-0,4%	-10,5%	5,3%
IS	1	2	0	0	1	0	0	1	1	1
LI	-	-	-	-	-	-	-	-	-	-
NO	6	11	10	7	5	9	5	9	9	1
CH	6	8	4	5	3	6	8	6	3	3

Source: CARE (EU road accidents database) or national publications
Last update: May 2016

Annual Accident Report 2016

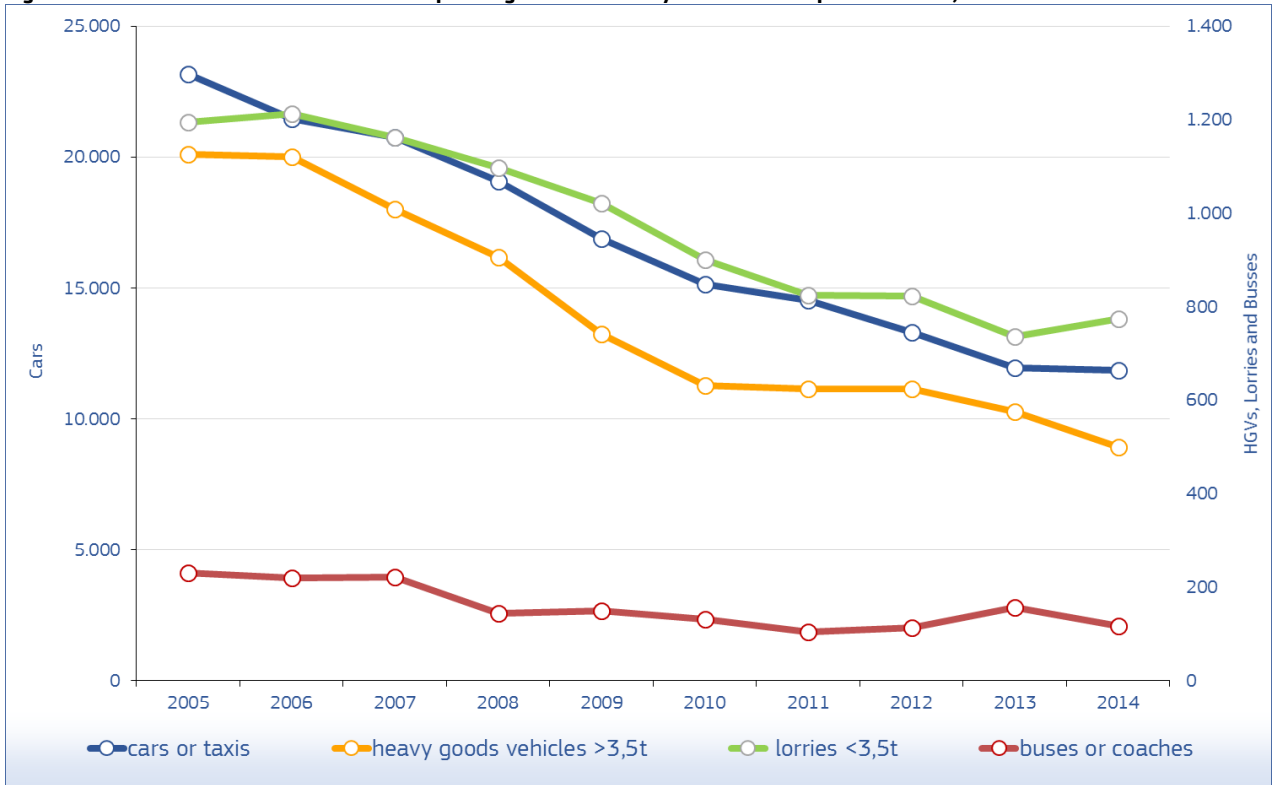
Table 11: Annual number of buses or coaches fatalities by country, 2005-2014

	2005	2006	2007	2008	2009	2010	2011	2012	2013	2014
BE	0	0	4	2	1	1	2	9	5	4
BG	-	-	-	5	5	-	-	-	-	-
CZ	0	10	2	0	3	1	4	2	2	3
DK	3	3	3	0	0	0	0	1	0	0
DE	9	12	24	10	11	32	10	3	11	13
EE	1	1	0	0	2	4	1	2	2	8
IE	5	3	1	0	1	1	0	1	0	-
EL	8	4	0	4	0	2	4	8	2	2
ES	26	37	15	28	21	5	4	3	11	26
FR	15	8	35	20	5	4	0	7	7	9
HR	-	-	6	17	0	0	0	8	1	0
IT	12	24	18	11	2	9	3	7	48	5
CY	0	2	0	0	0	0	0	0	0	0
LV	5	1	3	1	2	5	2	3	1	1
LT	-	-	-	-	-	-	-	-	1	0
LU	0	0	0	0	0	0	0	0	0	0
HU	4	14	14	3	3	12	30	3	6	1
MT	0	0	0	0	0	0	-	-	-	-
NL	0	1	1	3	0	1	0	1	0	1
AT	2	8	4	2	2	8	0	2	0	1
PL	52	15	17	11	19	14	12	18	18	12
PT	2	1	15	1	6	0	1	2	11	2
RO	42	19	26	6	36	10	9	10	8	9
SI	1	0	0	0	1	0	0	0	0	-
SK	8	4	8	4	12	0	-	-	2	-
FI	2	2	0	0	1	0	2	1	1	0
SE	1	10	6	1	0	2	2	2	1	2
UK	21	28	14	14	16	14	12	12	12	11
EU	231	219	222	144	149	131	104	113	155	117
Yearly Change		-5,1%	1,3%	-35,0%	3,7%	-12,6%	-20,7%	9,3%	37,2%	-24,7%
IS	0	1	0	0	0	0	0	0	0	0
LI	-	-	-	-	-	-	-	-	-	-
NO	1	0	5	1	1	4	4	2	5	7
CH	13	2	0	4	0	4	3	32	0	2

Source: CARE (EU road accidents database) or national publications
Last update: May 2016

Annual Accident Report 2016

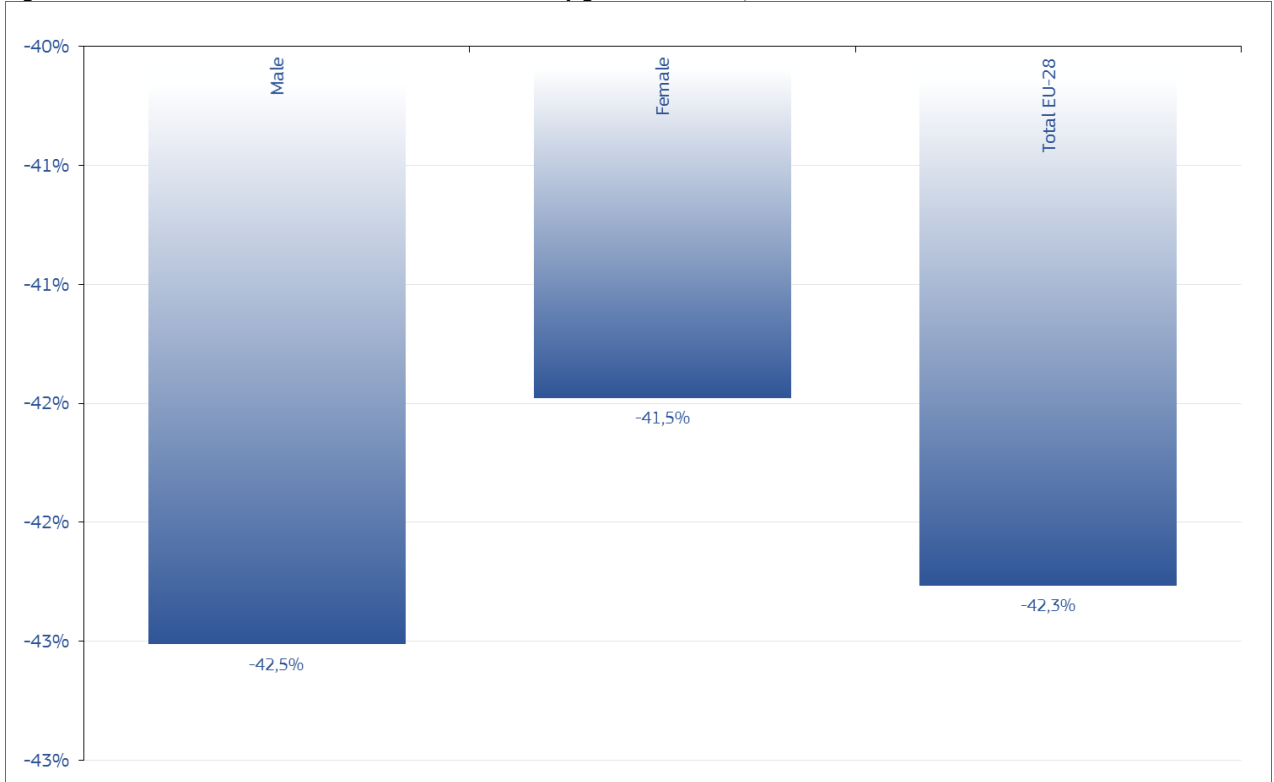
Figure 17: Annual number of drivers and passengers fatalities by mode of transport in the EU, 2005-2014



Source: CARE (EU road accidents database) or national publications
 Last update: May 2016

3.2 Time series related to age and gender

Figure 18: Increase/decrease of number of fatalities by gender in the EU, 2014 and 2005



Source: CARE (EU road accidents database) or national publications
 Last update: May 2016

Annual Accident Report 2016

Table 12: Annual number of fatalities by age group by country, 2005-2006

	2005						2006					
	0-14	15-17	18-24	25-49	50-64	65+	0-14	15-17	18-24	25-49	50-64	65+
BE	37	31	196	473	160	186	32	21	195	482	141	193
BG	-	-	-	-	-	-	-	-	-	-	-	-
CZ	41	31	223	520	264	202	32	18	183	432	215	173
DK	13	20	52	124	52	70	13	19	65	91	46	72
DE	159	224	1.076	1.930	804	1.162	136	173	1.011	1.824	791	1.154
EE	12	5	26	73	32	21	6	5	35	73	53	32
IE	9	26	110	139	47	56	15	18	95	133	36	66
EL	44	38	326	687	219	322	36	40	305	725	197	327
ES	120	138	733	1.967	688	719	109	131	601	1.952	591	671
FR	130	218	1.206	2.032	698	1.014	120	183	1.037	1.739	644	921
HR	-	-	-	-	-	-	-	-	-	-	-	-
IT	131	211	919	2.284	783	1.199	110	186	825	2.290	802	1.220
CY	5	4	32	37	12	12	1	3	25	34	5	18
LV	10	12	63	187	76	65	14	11	59	165	74	61
LT	-	-	-	-	-	-	-	-	-	-	-	-
LU	4	1	9	21	4	8	0	0	8	24	5	3
HU	34	26	159	557	286	206	42	24	134	565	307	216
MT	3	3	5	3	0	3	0	1	3	5	1	1
NL	31	33	122	261	115	188	37	33	112	233	105	209
AT	25	48	140	296	108	151	23	35	129	257	130	156
PL	167	148	933	2.100	1.030	931	151	150	895	1.959	1.054	888
PT	31	35	221	510	215	222	22	10	125	404	178	215
RO	152	56	294	1.061	573	491	145	55	293	1.035	555	504
SI	10	7	44	116	40	41	9	10	54	114	42	33
SK	19	18	83	261	144	77	13	8	100	263	131	95
FI	21	16	53	140	58	91	5	21	67	104	68	71
SE	10	19	67	153	84	104	16	24	75	142	93	95
UK	125	222	700	1.244	420	616	147	207	706	1.234	423	572
EU	1.416	1.645	8.155	17.938	7.233	8.518	1.307	1.441	7.501	17.040	7.007	8.327
Yearly Change							-8,4%	-14,1%	-8,7%	-5,3%	-3,2%	-2,3%
IS	0	2	6	3	6	2	1	3	7	11	5	4
NO	4	16	46	83	33	42	9	14	39	76	39	65
CH	14	17	77	135	58	108	16	18	62	117	56	101

Source: CARE (EU road accidents database) or national publications

Last update: May 2016

Annual Accident Report 2016

Table 13: Annual number of fatalities by age group by country, 2007-2008

	2007						2008					
	0-14	15-17	18-24	25-49	50-64	65+	0-14	15-17	18-24	25-49	50-64	65+
BE	30	27	215	464	159	170	35	28	177	411	139	149
BG	-	-	-	-	-	-	40	34	187	420	181	199
CZ	25	29	190	523	230	201	19	14	193	437	209	186
DK	20	18	58	145	69	95	19	14	69	146	61	97
DE	111	176	971	1.799	736	1.153	102	174	887	1.515	727	1.066
EE	6	8	41	70	27	41	3	4	28	40	28	29
IE	15	14	76	123	45	58	18	20	75	91	24	47
EL	42	43	280	685	207	330	35	41	246	658	221	329
ES	99	135	550	1.817	566	604	83	95	469	1.399	465	544
FR	150	166	984	1.789	627	896	114	136	956	1.624	622	823
HR	26	17	135	247	83	110	20	16	130	261	132	105
IT	95	190	723	2.187	681	1.105	85	163	634	1.937	660	1.099
CY	4	6	24	27	12	16	1	5	17	35	10	14
LV	11	15	44	169	90	73	12	12	48	126	63	46
LT	-	-	-	-	-	-	-	-	-	-	-	-
LU	2	2	8	22	4	7	0	0	8	16	5	4
HU	37	30	139	541	264	209	24	32	103	407	237	179
MT	0	0	4	5	0	3	0	0	2	5	0	2
NL	36	32	134	223	103	181	23	32	107	228	113	174
AT	13	32	135	254	112	145	12	26	134	220	115	172
PL	156	181	953	2.112	1.140	945	146	185	948	1.982	1.163	962
PT	27	11	148	385	171	225	23	11	113	363	174	197
RO	117	52	402	1.040	569	617	137	58	439	1.182	678	571
SI	6	6	64	126	40	51	4	10	38	87	41	34
SK	28	6	87	274	129	97	23	9	92	198	111	72
FI	14	18	75	118	76	79	8	26	50	111	56	93
SE	10	22	86	148	100	105	6	13	64	142	70	102
UK	96	192	639	1.142	407	575	110	160	542	989	344	499
EU	1.223	1.466	7.394	16.950	6.884	8.342	1.109	1.322	6.797	15.125	6.705	7.847
Yearly Change	-6,8%	1,7%	-1,4%	-0,5%	-1,8%	0,2%	-10,3%	-10,9%	-8,8%	-12,1%	-2,7%	-6,3%
IS	1	0	2	7	2	3	0	0	3	2	3	4
NO	10	10	33	89	40	51	8	11	59	84	44	48
CH	14	16	61	105	71	117	10	12	44	123	65	103

Source: CARE (EU road accidents database) or national publications
Last update: May 2016

Annual Accident Report 2016

Table 14: Annual number of fatalities by age group by country, 2009-2010

	2009						2010					
	0-14	15-17	18-24	25-49	50-64	65+	0-14	15-17	18-24	25-49	50-64	65+
BE	16	21	147	355	150	163	23	21	171	343	124	153
BG	30	33	157	368	155	158	-	-	-	-	-	-
CZ	16	13	133	405	166	167	17	17	125	329	142	172
DK	10	17	53	121	41	61	9	8	42	81	48	67
DE	90	133	796	1.351	678	1.104	104	101	690	1.218	624	910
EE	4	2	21	39	13	18	1	2	10	24	25	17
IE	10	9	64	96	31	26	6	7	56	83	26	30
EL	43	37	242	617	211	275	30	39	186	521	190	268
ES	61	70	357	1.273	412	507	79	49	311	1.087	407	527
FR	122	189	901	1.653	612	796	130	161	831	1.513	592	765
HR	24	18	102	187	101	116	12	9	58	170	80	97
IT	71	121	579	1.596	669	1.111	70	121	547	1.573	645	1.064
CY	4	2	19	29	3	14	1	2	12	27	7	11
LV	7	4	31	115	48	35	9	2	35	75	53	36
LT	-	-	-	-	-	-	-	-	-	-	-	-
LU	6	0	10	12	11	9	0	0	10	13	6	3
HU	22	16	81	353	184	166	20	10	73	304	184	137
MT	1	0	2	5	2	5	1	0	4	7	1	0
NL	23	26	126	191	91	187	16	20	90	171	86	154
AT	15	29	99	229	102	159	10	27	102	178	95	140
PL	128	120	833	1.668	970	810	112	122	677	1.419	871	674
PT	23	19	109	331	150	205	18	7	88	378	168	277
RO	125	58	416	1.000	597	593	95	50	307	849	577	494
SI	2	4	30	61	35	39	2	4	19	54	29	30
SK	9	5	53	122	80	51	11	7	59	126	67	48
FI	6	23	51	84	46	69	7	13	48	93	47	64
SE	9	25	60	100	72	92	9	5	47	82	52	71
UK	69	126	467	913	330	432	42	93	362	701	330	377
EU	953	1.125	5.981	13.368	6.017	7.420	871	934	5.158	11.882	5.687	6.796
Yearly Change	-16,3%	-17,5%	-13,6%	-13,1%	-11,4%	-5,7%	-9,4%	-20,5%	-15,9%	-12,5%	-5,8%	-9,2%
IS	0	1	1	8	4	3	0	0	3	1	2	2
NO	8	17	46	71	33	37	3	7	42	75	39	42
CH	21	5	68	97	68	90	8	12	36	105	65	101

Source: CARE (EU road accidents database) or national publications
Last update: May 2016

Annual Accident Report 2016

Table 15: Annual number of fatalities by age group by country, 2011-2012

	2011						2012					
	0-14	15-17	18-24	25-49	50-64	65+	0-14	15-17	18-24	25-49	50-64	65+
BE	35	14	143	353	127	183	16	18	128	279	151	177
BG	-	-	-	-	-	-	-	-	-	-	-	-
CZ	12	16	129	309	160	141	15	17	96	311	144	157
DK	9	8	35	63	42	63	7	6	31	51	28	44
DE	86	116	737	1.302	723	1.044	73	113	611	1.144	665	994
EE	4	0	15	40	23	19	0	1	17	26	25	18
IE	7	10	39	76	17	37	2	7	35	61	20	36
EL	22	28	163	458	185	260	21	21	143	389	147	248
ES	43	29	234	880	368	486	53	32	175	783	337	506
FR	128	144	813	1.517	602	759	115	131	753	1.345	564	745
HR	14	14	81	174	61	74	8	10	48	150	98	79
IT	61	105	496	1.417	667	1.038	52	85	423	1.400	656	1.068
CY	1	1	14	36	7	12	0	2	10	23	7	9
LV	5	4	20	70	32	43	6	5	16	67	40	34
LT	-	-	-	-	-	-	-	-	-	-	-	-
LU	1	2	8	12	7	3	1	2	6	14	2	9
HU	12	8	73	227	172	146	20	11	42	237	170	121
MT	-	-	-	-	-	-	-	-	-	-	-	-
NL	18	19	86	152	83	188	24	13	76	171	91	187
AT	13	24	76	164	96	150	8	24	84	156	105	154
PL	102	106	718	1.580	950	703	90	87	585	1.327	823	653
PT	19	11	105	303	189	264	14	10	65	274	155	195
RO	83	36	251	723	468	453	90	52	231	740	470	457
SI	6	4	17	62	29	23	3	2	19	46	34	26
SK	-	-	-	-	-	-	-	-	-	-	-	-
FI	8	14	51	92	45	82	7	14	41	84	51	58
SE	10	9	57	96	56	91	7	10	41	107	49	71
UK	52	77	341	746	305	439	56	66	344	631	283	422
EU	800	843	4.963	11.448	5.693	6.959	732	785	4.267	10.396	5.396	6.754
Yearly Change	-8,9%	-10,7%	-3,9%	-3,8%	0,1%	2,3%	-9,3%	-7,3%	-16,3%	-10,1%	-5,5%	-3,0%
IS	2	4	0	2	2	2	0	0	2	2	1	4
NO	7	6	27	57	34	37	4	6	20	60	27	28
CH	10	9	41	80	62	118	31	6	39	92	78	93

Source: CARE (EU road accidents database) or national publications

Last update: May 2016

Annual Accident Report 2016

Table 16: Annual number of fatalities by age group by country, 2013-2014

	2013						2014					
	0-14	15-17	18-24	25-49	50-64	65+	0-14	15-17	18-24	25-49	50-64	65+
BE	18	8	119	318	108	151	10	22	117	255	137	178
BG	-	-	-	-	-	-	-	-	-	-	-	-
CZ	11	10	96	242	136	155	14	11	100	288	142	131
DK	13	6	25	56	38	53	6	3	22	61	32	58
DE	58	89	493	1.065	633	999	71	91	496	1.045	687	987
EE	3	2	8	32	17	19	1	2	13	27	19	16
IE	6	4	36	74	22	46	-	-	-	-	-	-
EL	17	27	112	319	149	234	10	19	114	300	160	187
ES	46	20	145	643	329	479	37	23	130	648	358	479
FR	97	102	636	1.213	532	688	112	116	582	1.255	547	772
HR	10	10	58	132	83	75	8	5	36	111	67	81
IT	55	69	404	1.171	614	1.011	62	70	369	1.129	645	1.056
CY	1	0	18	12	5	8	0	2	12	16	4	11
LV	7	1	14	75	32	40	7	3	30	80	37	42
LT	7	4	41	95	56	52	15	9	33	97	63	49
LU	2	0	5	19	10	9	1	0	5	18	9	2
HU	7	14	50	227	156	135	11	7	59	229	163	155
MT	-	-	-	-	-	-	-	-	-	-	-	-
NL	8	14	81	126	80	164	19	17	69	136	62	173
AT	10	14	56	148	85	142	8	16	59	130	102	115
PL	91	83	551	1.194	786	647	80	71	499	1.117	735	692
PT	11	8	65	215	142	193	8	11	53	215	144	206
RO	76	40	220	704	397	422	91	37	177	624	468	420
SI	3	2	22	43	28	27	-	-	-	-	-	-
SK	6	9	45	110	69	76	-	-	-	-	-	-
FI	6	12	36	79	52	73	10	12	32	78	41	56
SE	4	7	40	77	56	76	7	7	25	78	54	99
UK	41	48	348	642	282	409	50	38	335	662	295	474
EU	645	636	3.885	9.406	5.053	6.541	681	633	3.608	9.134	5.205	6.697
Yearly Change	-13,5%	-23,5%	-9,8%	-10,5%	-6,8%	-3,3%	5,3%	-0,5%	-7,7%	-3,0%	2,9%	2,3%
IS	2	3	2	4	2	2	0	1	1	1	1	0
NO	4	6	29	60	44	44	4	4	18	48	25	47
CH	12	2	30	68	57	100	9	2	38	65	43	86

Source: CARE (EU road accidents database) or national publications

Last update: May 2016

Annual Accident Report 2016

Table 17: Annual number of female fatalities by country, 2005-2014

	2005	2006	2007	2008	2009	2010	2011	2012	2013	2014
BE	260	248	215	221	234	203	192	179	173	166
BG	-	-	-	231	201	-	-	-	-	-
CZ	298	225	275	259	225	177	187	167	150	164
DK	80	87	105	107	91	85	59	45	65	43
DE	1.445	1.371	1.309	1.229	1.102	997	1.038	950	905	867
EE	42	50	45	34	26	24	27	23	27	27
IE	102	97	85	75	56	46	56	54	46	-
EL	355	290	338	304	250	245	221	182	187	146
ES	958	899	823	676	621	556	465	449	392	398
FR	1.314	1.155	1.118	1.013	1.041	953	939	923	763	843
HR	-	-	-	157	141	102	84	69	84	64
IT	1.243	1.277	1.005	960	926	846	855	738	698	719
CY	19	15	14	17	12	10	13	14	9	13
LV	118	97	100	77	42	26	8	47	39	46
LT	-	-	-	-	-	-	-	-	61	75
LU	17	10	7	8	13	8	11	8	11	6
HU	308	293	314	237	207	181	169	163	159	167
MT	4	0	1	3	5	5	-	-	-	-
NL	210	212	192	179	175	145	162	146	131	134
AT	195	190	161	170	155	143	138	153	113	115
PL	1.243	1.232	1.333	1.321	1.109	913	938	845	792	771
PT	233	182	188	209	173	203	216	152	135	134
RO	688	661	740	765	694	575	473	500	487	457
SI	71	42	59	36	39	34	28	33	31	-
SK	144	134	156	111	88	92	-	-	72	-
FI	96	95	101	79	71	68	81	64	66	62
SE	113	112	127	111	92	67	78	67	65	79
UK	816	806	752	682	597	497	499	429	456	481
EU	10.821	10.230	10.012	9.331	8.447	7.463	7.296	6.739	6.323	6.332
Yearly Change		-5,5%	-2,1%	-6,8%	-9,5%	-11,6%	-2,2%	-7,6%	-6,2%	0,1%
IS	6	11	2	2	3	4	4	2	8	2
NO	68	73	70	60	45	50	50	38	52	39
CH	88	90	82	90	80	83	80	90	78	56

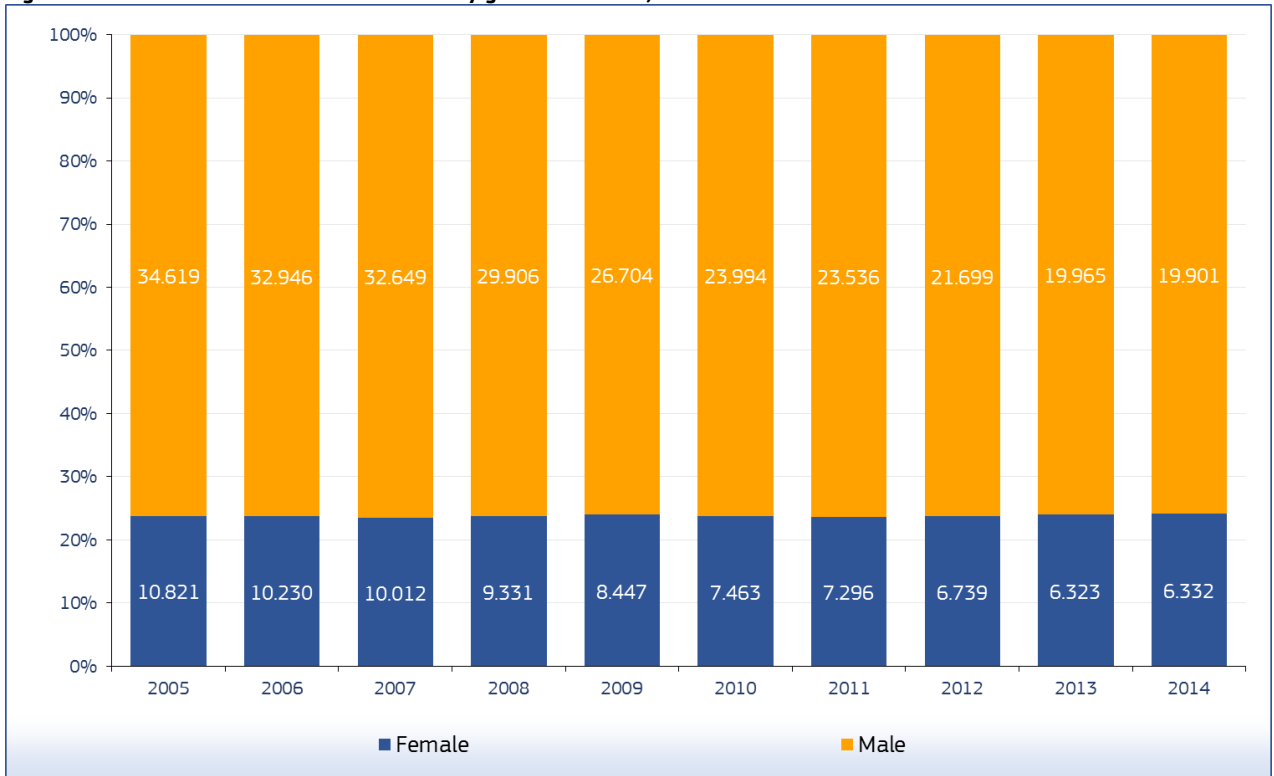
Source: CARE (EU road accidents database) or national publications
Last update: May 2016

Table 18: Annual number of male fatalities by country, 2005-2014

	2005	2006	2007	2008	2009	2010	2011	2012	2013	2014
BE	823	818	850	717	705	629	659	589	549	557
BG	-	-	-	788	700	-	-	-	-	-
CZ	988	838	946	817	659	607	574	560	492	508
DK	251	219	300	299	212	170	161	122	126	139
DE	3.913	3.717	3.638	3.247	3.050	2.651	2.971	2.650	2.433	2.509
EE	126	152	147	97	71	55	74	64	54	51
IE	286	262	250	199	182	161	130	108	142	-
EL	1.296	1.361	1.268	1.244	1.201	1.013	920	806	692	649
ES	3.446	3.192	2.985	2.412	2.087	1.917	1.589	1.447	1.279	1.289
FR	4.004	3.554	3.502	3.262	3.232	3.039	3.024	2.730	2.505	2.541
HR	-	-	-	505	406	324	334	324	284	244
IT	4.575	4.392	4.126	3.765	3.311	3.268	3.005	3.015	2.703	2.662
CY	83	71	75	65	59	50	58	37	35	32
LV	324	309	317	239	166	121	109	128	137	166
LT	-	-	-	-	-	-	-	-	194	192
LU	30	33	38	27	35	24	22	26	34	29
HU	963	1.008	916	757	612	555	467	438	429	457
MT	13	11	11	6	10	8	-	-	-	-
NL	540	518	517	498	469	392	384	416	345	342
AT	573	540	530	509	478	409	385	378	342	315
PL	4.175	3.993	4.241	4.099	3.456	2.977	3.243	2.725	2.563	2.431
PT	1.005	779	779	674	666	734	675	564	501	503
RO	1.941	1.926	2.060	2.300	2.102	1.802	1.545	1.542	1.374	1.361
SI	187	220	232	178	132	104	113	97	94	-
SK	462	480	505	495	296	279	-	-	249	-
FI	283	241	279	265	208	204	211	191	192	167
SE	324	333	344	286	266	199	241	218	195	191
UK	2.520	2.492	2.307	1.962	1.740	1.408	1.461	1.373	1.314	1.373
EU	34.619	32.946	32.649	29.906	26.704	23.994	23.536	21.699	19.965	19.901
Yearly Change		-4,8%	-0,9%	-8,4%	-10,7%	-10,2%	-1,9%	-7,8%	-8,0%	-0,3%
IS	13	20	13	10	14	4	8	7	7	2
NO	156	169	163	195	167	158	118	107	135	108
CH	321	280	302	267	269	244	240	249	191	187

Source: CARE (EU road accidents database) or national publications
Last update: May 2016

Figure 19: Annual distribution of fatalities by gender in the EU, 2005-2014



Source: CARE (EU road accidents database) or national publications
 Last update: May 2016

Table 19: Annual number of female fatalities as drivers by country, 2005-2014

	2005	2006	2007	2008	2009	2010	2011	2012	2013	2014
BE	136	136	120	105	113	111	88	95	74	80
BG	-	-	-	36	23	-	-	-	-	-
CZ	69	70	86	74	77	54	64	51	41	56
DK	38	38	56	58	45	43	32	23	27	18
DE	736	664	669	591	530	499	482	489	403	438
EE	8	13	11	11	5	9	2	6	7	8
IE	45	41	29	36	31	21	24	34	23	-
EL	65	53	64	64	44	60	52	33	44	35
ES	242	253	238	176	190	150	118	107	109	104
FR	586	527	507	451	473	435	423	433	337	383
HR	-	-	-	37	34	24	24	14	18	15
IT	400	403	353	337	313	306	317	273	258	244
CY	5	3	3	6	0	0	5	6	3	3
LV	16	11	14	15	14	7	0	13	8	9
LT	-	-	-	-	-	-	-	-	12	11
LU	10	3	4	6	3	4	4	1	7	3
HU	88	94	86	62	59	45	47	48	57	51
MT	0	0	0	2	0	1	-	-	-	-
NL	132	141	112	113	101	92	108	90	93	99
AT	96	96	69	81	63	58	60	76	49	61
PL	250	262	295	299	267	207	250	239	192	189
PT	67	44	46	63	46	46	52	34	35	37
RO	61	60	62	77	81	55	45	58	48	36
SI	26	15	24	13	10	16	11	16	16	-
SK	28	30	32	24	16	20	-	-	18	-
FI	43	42	46	46	30	31	32	29	31	32
SE	51	52	55	55	41	36	33	31	33	35
UK	288	288	269	260	220	204	204	153	182	192
EU	3.571	3.424	3.335	3.110	2.841	2.569	2.533	2.406	2.149	2.220
Yearly Change	0	-4,1%	-2,6%	-6,8%	-8,6%	-9,6%	-1,4%	-5,0%	-10,7%	3,3%
IS	3	5	1	2	0	1	2	1	4	0
NO	22	33	34	26	14	21	25	25	26	21
CH	35	37	34	32	42	30	33	27	27	21

Source: CARE (EU road accidents database) or national publications
Last update: May 2016

Table 20: Annual number of male fatalities as drivers by country, 2005-2014

	2005	2006	2007	2008	2009	2010	2011	2012	2013	2014
BE	671	668	711	586	588	484	533	466	442	430
BG	-	-	-	421	413	-	-	-	-	-
CZ	642	569	666	555	466	440	388	402	345	392
DK	195	162	224	230	153	116	119	91	94	111
DE	3.115	2.924	2.848	2.527	2.408	2.085	2.344	2.108	1.906	1.983
EE	73	87	93	48	44	40	50	33	38	33
IE	184	160	155	134	125	91	81	67	101	-
EL	986	1.021	945	956	919	778	661	618	538	505
ES	2.486	2.308	2.180	1.750	1.500	1.360	1.170	1.056	906	939
FR	3.113	2.799	2.732	2.526	2.566	2.400	2.340	2.090	1.942	1.981
HR	-	-	-	335	270	209	245	237	197	170
IT	3.495	3.345	3.292	2.962	2.621	2.546	2.373	2.349	2.050	2.047
CY	54	49	56	49	44	38	45	31	26	24
LV	147	161	162	115	92	64	58	72	73	79
LT	-	-	-	-	-	-	-	-	93	86
LU	24	24	24	21	24	21	18	20	28	24
HU	607	628	601	480	430	341	321	280	266	309
MT	5	6	8	6	8	6	-	-	-	-
NL	433	417	406	417	387	317	315	341	289	283
AT	448	405	405	399	357	316	297	298	275	254
PL	2.216	2.030	2.144	2.070	1.898	1.648	1.692	1.517	1.373	1.356
PT	693	578	555	496	466	506	479	406	351	359
RO	879	848	937	1.152	974	872	764	763	672	657
SI	139	156	172	133	100	73	87	76	72	-
SK	259	236	289	258	162	150	-	-	165	-
FI	217	191	217	182	153	159	166	160	150	129
SE	248	253	266	231	207	154	170	145	138	143
UK	1.714	1.665	1.550	1.333	1.163	974	981	917	896	920
EU	23.892	22.539	22.487	20.465	18.631	16.694	16.359	15.220	13.845	13.971
Yearly Change		-5,7%	-0,2%	-9,0%	-9,0%	-10,4%	-2,0%	-7,0%	-9,0%	0,9%
IS	11	14	12	8	9	3	5	5	6	2
NO	118	133	123	147	122	123	93	77	110	81
CH	240	206	227	218	204	181	183	183	144	148

Source: CARE (EU road accidents database) or national publications
Last update: May 2016

Table 21: Annual number of female fatalities as passengers by country, 2005-2014

	2005	2006	2007	2008	2009	2010	2011	2012	2013	2014
BE	81	60	49	74	66	46	53	40	50	45
BG	-	-	-	115	100	-	-	-	-	-
CZ	132	94	103	97	74	58	56	56	47	56
DK	28	20	23	24	22	24	12	7	23	13
DE	415	407	350	348	327	308	279	233	242	226
EE	18	12	18	8	11	10	14	6	8	4
IE	36	34	28	22	11	13	18	11	10	-
EL	197	142	171	141	135	119	100	81	78	76
ES	473	436	364	324	260	225	204	207	162	175
FR	462	403	374	322	356	306	314	280	245	239
HR	-	-	-	66	66	38	32	30	38	19
IT	532	562	396	370	322	315	282	253	240	253
CY	6	7	8	5	6	4	1	3	2	3
LV	47	32	34	24	13	9	2	15	11	19
LT	-	-	-	-	-	-	-	-	14	20
LU	5	2	1	0	4	4	4	5	1	3
HU	127	108	126	85	70	76	71	64	51	64
MT	0	0	0	0	3	3	-	-	-	-
NL	47	47	46	38	42	22	27	32	17	18
AT	57	49	56	45	53	33	39	44	28	21
PL	486	469	488	469	384	339	302	265	265	237
PT	103	76	92	95	79	80	85	52	53	42
RO	319	271	278	311	283	227	177	200	167	192
SI	25	17	19	12	19	8	12	9	7	-
SK	64	44	54	41	40	29	-	-	23	-
FI	37	29	41	17	30	21	29	22	18	14
SE	41	38	46	31	30	20	20	11	17	23
UK	270	286	254	203	191	161	143	144	144	125
EU	4.203	3.840	3.614	3.300	3.011	2.612	2.422	2.210	2.064	2.030
Yearly Change		-8,6%	-5,9%	-8,7%	-8,8%	-13,2%	-7,3%	-8,7%	-6,6%	-1,6%
IS	2	3	1	0	2	2	0	0	3	2
NO	30	23	24	21	20	18	17	7	18	11
CH	22	20	12	27	13	18	13	26	13	16

Source: CARE (EU road accidents database) or national publications
Last update: May 2016

Table 22: Annual number of male fatalities as passengers by country, 2005-2014

	2005	2006	2007	2008	2009	2010	2011	2012	2013	2014
BE	88	79	81	72	69	85	64	63	57	51
BG	-	-	-	180	167	-	-	-	-	-
CZ	145	128	134	112	97	70	81	62	52	47
DK	25	26	34	36	31	28	24	15	14	18
DE	406	383	385	357	296	280	290	243	227	202
EE	18	24	29	22	15	6	9	11	4	4
IE	51	54	43	34	31	38	16	21	23	0
EL	174	170	172	144	153	122	105	86	68	54
ES	534	484	441	343	289	269	184	158	128	134
FR	522	445	446	428	382	366	367	361	279	282
HR	-	-	-	87	74	50	46	40	46	31
IT	605	601	463	410	314	326	299	302	302	259
CY	14	8	5	6	12	5	7	1	5	4
LV	58	50	50	57	29	16	12	13	15	34
LT	-	-	-	-	-	-	-	-	38	41
LU	6	4	9	2	5	2	1	2	4	2
HU	165	176	131	118	76	85	73	57	67	50
MT	6	1	1	0	0	1	-	-	-	-
NL	55	59	59	53	50	44	29	33	26	22
AT	70	70	53	52	59	47	40	32	21	23
PL	722	673	704	711	555	473	533	393	386	304
PT	161	107	117	74	100	110	76	65	53	54
RO	390	374	409	458	443	353	285	293	248	236
SI	30	38	44	16	17	14	10	10	10	-
SK	81	90	69	79	53	46	-	-	34	-
FI	37	25	28	46	36	26	24	15	25	18
SE	45	43	43	31	28	20	30	21	25	17
UK	365	362	323	257	239	151	166	159	143	153
EU	5.078	4.779	4.579	4.223	3.659	3.238	3.023	2.696	2.468	2.252
Yearly Change		-5,9%	-4,2%	-7,8%	-13,4%	-11,5%	-6,6%	-10,8%	-8,5%	-8,7%
IS	2	5	0	2	4	0	1	1	1	0
NO	-	-	-	-	-	-	-	-	-	-
CH	43	31	32	21	30	23	22	28	16	15

Source: CARE (EU road accidents database) or national publications
Last update: May 2016

Table 23: Annual number of female fatalities as pedestrians by country, 2005-2014

	2005	2006	2007	2008	2009	2010	2011	2012	2013	2014
BE	88	79	81	72	69	85	64	63	57	51
BG	-	-	-	180	167	-	-	-	-	-
CZ	145	128	134	112	97	70	81	62	52	47
DK	25	26	34	36	31	28	24	15	14	18
DE	406	383	385	357	296	280	290	243	227	202
EE	18	24	29	22	15	6	9	11	4	4
IE	51	54	43	34	31	38	16	21	23	-
EL	174	170	172	144	153	122	105	86	68	54
ES	534	484	441	343	289	269	184	158	128	134
FR	522	445	446	428	382	366	367	361	279	282
HR	-	-	-	87	74	50	46	40	46	31
IT	605	601	463	410	314	326	299	302	302	259
CY	14	8	5	6	12	5	7	1	5	4
LV	58	50	50	57	29	16	12	13	15	34
LT	-	-	-	-	-	-	-	-	38	41
LU	6	4	9	2	5	2	1	2	4	2
HU	165	176	131	118	76	85	73	57	67	50
MT	6	1	1	0	0	1	-	-	-	-
NL	55	59	59	53	50	44	29	33	26	22
AT	70	70	53	52	59	47	40	32	21	23
PL	722	673	704	711	555	473	533	393	386	304
PT	161	107	117	74	100	110	76	65	53	54
RO	390	374	409	458	443	353	285	293	248	236
SI	30	38	44	16	17	14	10	10	10	-
SK	81	90	69	79	53	46	-	-	34	-
FI	37	25	28	46	36	26	24	15	25	18
SE	45	43	43	31	28	20	30	21	25	17
UK	365	362	323	257	239	151	166	159	143	153
EU	5.078	4.779	4.579	4.223	3.659	3.238	3.023	2.696	2.468	2.275
Yearly Change		-5,9%	-4,2%	-7,8%	-13,4%	-11,5%	-6,6%	-10,8%	-8,5%	-7,8%
IS	2	5	0	2	4	0	1	1	1	0
NO	22	17	29	30	30	22	17	14	15	16
CH	43	31	32	21	30	23	22	28	16	15

Source: CARE (EU road accidents database) or national publications
Last update: May 2016

Table 24: Annual number of male fatalities as pedestrians by country, 2005-2014

	2005	2006	2007	2008	2009	2010	2011	2012	2013	2014
BE	64	70	57	58	48	58	62	60	49	65
BG	-	-	-	187	120	-	-	-	-	-
CZ	201	141	146	150	95	97	105	96	95	69
DK	30	31	42	33	28	26	18	16	18	10
DE	392	410	405	363	346	286	337	299	300	324
EE	33	37	21	26	12	9	15	18	11	11
IE	51	48	52	31	26	32	33	20	18	-
EL	136	170	151	144	129	113	154	102	86	90
ES	426	400	363	319	298	288	234	233	246	216
FR	369	310	324	308	284	273	317	279	284	278
HR	-	-	-	83	62	65	43	47	41	43
IT	475	446	371	393	376	396	333	364	351	356
CY	15	14	14	10	3	7	6	5	4	3
LV	119	98	105	67	45	41	39	43	49	53
LT	-	-	-	-	-	-	-	-	61	65
LU	0	5	5	4	6	1	3	4	2	3
HU	191	204	184	159	106	129	73	101	96	98
MT	2	4	2	0	2	1	-	-	-	-
NL	52	42	52	28	31	31	39	40	30	34
AT	55	65	72	58	62	46	48	48	46	38
PL	1.237	1.290	1.393	1.318	1.003	856	1.018	815	804	771
PT	152	93	106	104	99	118	120	93	97	90
RO	670	704	713	690	685	575	496	486	454	468
SI	17	26	15	28	14	17	16	11	12	-
SK	122	154	147	158	81	83	-	-	50	-
FI	29	25	34	37	19	19	21	16	17	20
SE	31	34	33	21	25	20	28	33	27	31
UK	441	465	434	372	338	283	314	297	275	300
EU	5.640	5.618	5.572	5.209	4.404	4.051	4.137	3.758	3.644	3.637
Yearly Change		-0,4%	-0,8%	-6,5%	-15,5%	-8,0%	2,1%	-9,2%	-3,0%	-0,2%
IS	0	1	1	0	1	1	2	1	0	0
NO	16	19	11	18	15	13	8	16	10	11
CH	38	43	43	28	35	40	35	38	31	24

Source: CARE (EU road accidents database) or national publications
Last update: May 2016

4 Fatalities 2014

4.1 People involved

4.1.1 Age and gender

Table 25: Number of total fatalities by age group by country, 2014

	unknown	0-14	15-17	18-24	25-49	50-64	65+	Total
BE	8	10	22	117	255	137	178	727
BG	0	30	33	157	368	155	158	901
CZ	2	14	11	100	288	142	131	688
DK	0	6	3	22	61	32	58	182
DE	0	71	91	496	1,045	687	987	3,377
EE	0	1	2	13	27	19	16	78
IE	0	6	4	36	74	22	46	188
EL	5	10	19	114	300	160	187	795
ES	13	37	23	130	648	358	479	1,688
FR	0	112	116	582	1,255	547	772	3,384
HR	0	8	5	36	111	67	81	308
IT	50	62	70	369	1,129	645	1,056	3,381
CY	0	0	2	12	16	4	11	45
LV	13	7	3	30	80	37	42	212
LT	1	15	9	33	97	63	49	267
LU	0	1	0	5	18	9	2	35
HU	2	11	7	59	229	163	155	626
MT	0	1	0	4	7	1	0	13
NL	0	19	17	69	136	62	173	476
AT	0	8	16	59	130	102	115	430
PL	8	80	71	499	1,117	735	692	3,202
PT	1	8	11	53	215	144	206	638
RO	1	91	37	177	624	468	420	1,818
SI	0	3	2	22	43	28	27	125
SK	6	6	9	45	110	69	76	321
FI	0	10	12	32	78	41	56	229
SE	0	7	7	25	78	54	99	270
UK	0	50	38	335	662	295	474	1,854
EU	111	675	633	3,582	9,063	5,160	6,649	25,872
%	0,4%	2,6%	2,4%	13,8%	35,0%	19,9%	25,7%	100,0%
IS	-	-	-	-	-	-	-	-
NO	1	4	4	18	48	25	47	147
CH	0	9	2	38	65	43	86	243

Source: CARE (EU road accidents database) or national publications
Last update: May 2016

Table 26: Number of female fatalities by age group by country, 2014

	unknown	0-14	15-17	18-24	25-49	50-64	65+	Total
BE	2	3	8	16	42	36	59	166
BG	0	8	6	28	67	29	63	209
CZ	0	-	4	21	56	36	47	168
DK	0	2	2	5	9	6	19	45
DE	0	23	23	103	187	138	393	867
EE	0	0	2	2	8	6	9	27
IE	0	4	3	7	12	5	15	46
EL	1	3	0	31	44	30	37	146
ES	5	13	7	27	113	82	152	398
FR	0	39	31	109	223	139	302	843
HR	0	4	1	9	22	7	21	64
IT	16	31	11	73	193	115	280	719
CY	0	0	0	3	3	1	6	13
LV	2	5	2	4	14	6	13	46
LT	0	7	3	5	14	18	28	75
LU	0	1	0	0	2	1	2	6
HU	0	6	2	13	47	36	63	167
MT	0	1	0	2	2	0	0	6
NL	0	6	7	14	27	14	66	134
AT	0	2	4	9	30	21	49	115
PL	0	44	24	94	174	148	287	771
PT	0	3	3	11	28	28	61	134
RO	0	37	16	33	101	108	162	494
SI	0	1	0	8	7	7	8	32
SK	0	3	4	6	23	13	23	72
FI	0	5	2	5	21	11	18	62
SE	0	3	0	7	24	13	32	79
UK	0	22	16	68	117	62	196	481
EU	75	276	178	702	1.580	1.103	2.381	6.294
%	1,2%	4,4%	2,8%	11,2%	25,1%	17,5%	37,8%	100,0%
IS	-	-	-	-	-	-	-	-
NO	0	1	2	7	10	6	13	39
CH	0	5	1	3	9	6	32	56

Source: CARE (EU road accidents database) or national publications
Last update: May 2016

Table 27: Number of male fatalities by age group by country, 2014

	unknown	0-14	15-17	18-24	25-49	50-64	65+	Total
BE	4	6	14	101	213	101	118	557
BG	0	22	27	129	301	126	95	722
CZ	2	-	5	79	232	106	84	513
DK	0	4	1	17	52	26	39	139
DE	0	47	68	393	858	549	594	2.509
EE	0	1	0	11	19	13	7	51
IE	0	2	1	29	62	17	31	142
EL	4	7	19	83	256	130	150	649
ES	8	24	16	103	535	276	327	1.289
FR	0	73	85	473	1.032	408	470	2.541
HR	0	4	1	9	22	7	21	64
IT	34	31	59	296	936	530	776	2.662
CY	0	0	2	9	13	3	5	32
LV	11	2	1	26	66	31	29	166
LT	1	8	6	28	83	45	21	192
LU	0	0	0	5	16	8	0	29
HU	0	5	5	46	182	127	92	457
MT	0	0	0	2	5	1	0	8
NL	0	13	10	55	109	48	107	342
AT	0	6	12	50	100	81	66	315
PL	8	36	47	405	943	587	405	2.431
PT	1	5	8	42	187	116	144	503
RO	1	54	21	144	523	360	258	1.361
SI	0	2	2	14	36	21	19	96
SK	6	3	5	39	87	56	53	249
FI	0	5	10	27	57	30	38	167
SE	0	4	7	18	54	41	67	191
UK	0	28	22	267	545	233	278	1.373
EU	104	392	453	2.880	7.483	4.057	4.266	19.635
%	0,5%	2,0%	2,3%	14,7%	38,1%	20,7%	21,7%	100,0%
IS	-	-	-	-	-	-	-	-
NO	1	3	2	11	38	19	34	108
CH	0	4	1	35	56	37	54	187

Source: CARE (EU road accidents database) or national publications
Last update: May 2016

4.2 Modes of transport

4.2.1 Mode of transport by age

Table 28: Number of pedestrian fatalities by age group by country, 2014

	unknown	0-14	15-17	18-24	25-49	50-64	65+	Total
BE	3	1	2	4	29	24	43	106
BG	0	6	2	9	33	42	106	198
CZ	2	8	2	9	38	26	45	130
DK	0	0	1	1	4	2	14	22
DE	0	28	14	43	95	97	250	527
EE	0	1	1	0	5	8	11	26
IE	0	1	2	1	9	6	12	31
EL	3	3	1	5	28	20	65	125
ES	7	13	6	10	55	67	177	336
FR	0	20	11	17	117	81	253	499
HR	0	4	0	1	12	11	45	73
IT	6	20	6	17	83	86	360	578
CY	0	0	0	1	2	1	6	10
LV	4	2	0	2	22	17	24	71
LT	1	4	1	7	28	30	38	109
LU	0	0	0	0	1	2	0	3
HU	2	1	0	6	38	48	57	152
MT	0	0	0	0	0	0	0	0
NL	0	3	0	8	14	5	20	50
AT	0	2	2	5	16	14	32	71
PL	6	33	12	64	291	337	373	1.116
PT	0	1	1	4	24	29	86	145
RO	0	43	12	16	169	211	246	697
SI	0	2	0	3	5	2	8	22
SK	3	4	2	4	18	18	32	81
FI	0	2	1	2	16	7	8	36
SE	0	3	1	3	9	5	31	52
UK	0	29	14	37	141	71	172	464
EU	39	229	93	278	1.285	1.248	2.458	5.631
%	0,7%	4,1%	1,7%	4,9%	22,8%	22,2%	43,7%	100,0%
IS	-	-	-	-	-	-	-	-
NO	0	1	0	3	4	1	9	18
CH	0	4	1	3	7	3	25	43

Source: CARE (EU road accidents database) or national publications

Last update: May 2016

Table 29: Number of pedal cyclist fatalities by age group by country, 2014

	unknown	0-14	15-17	18-24	25-49	50-64	65+	Total
BE	0	4	1	1	10	13	47	76
BG	0	1	0	1	7	8	12	29
CZ	0	1	1	4	13	23	26	68
DK	0	2	0	1	10	3	14	30
DE	0	12	14	15	55	74	226	396
EE	0	0	0	0	0	0	0	0
IE	0	0	0	0	2	0	3	5
EL	1	1	0	2	6	5	4	19
ES	1	1	1	4	22	19	26	75
FR	0	16	6	5	27	36	69	159
HR	0	0	0	1	7	5	6	19
IT	1	6	4	10	58	55	139	273
CY	0	0	0	1	0	0	0	1
LV	1	1	0	0	7	3	4	16
LT	0	3	1	2	4	5	4	19
LU	0	0	0	0	0	0	0	0
HU	0	1	0	2	21	42	32	98
MT	0	0	0	0	0	0	0	0
NL	0	13	5	5	20	12	63	118
AT	0	0	0	1	6	13	25	45
PL	1	8	7	10	49	92	119	286
PT	0	2	1	2	10	9	11	35
RO	0	8	4	2	41	52	44	151
SI	0	1	1	0	6	2	6	17
SK	0	1	1	0	3	6	10	21
FI	0	0	0	0	4	6	17	27
SE	0	0	2	1	4	10	16	33
UK	0	6	1	13	45	24	27	116
EU	6	88	50	82	430	512	944	2.113
%	0,3%	4,2%	2,4%	3,9%	20,4%	24,2%	44,7%	100,0%
IS	-	-	-	-	-	-	-	-
NO	0	1	0	1	1	4	5	12
CH	0	2	1	0	7	8	16	34

Source: CARE (EU road accidents database) or national publications
Last update: May 2016

Table 30: Number of moped rider and passenger fatalities by age group by country, 2014

	unknown	0-14	15-17	18-24	25-49	50-64	65+	Total
BE	0	0	5	3	3	4	2	17
BG	0	0	1	2	1	1	0	5
CZ	0	0	0	1	1	4	2	8
DK	0	0	0	0	2	5	6	13
DE	0	1	6	2	16	27	35	87
EE	0	0	0	0	0	0	0	0
IE	0	0	0	0	0	0	0	0
EL	0	0	2	2	5	4	7	20
ES	1	0	6	3	22	8	13	54
FR	0	8	45	43	37	25	7	173
HR	0	0	0	1	2	4	4	11
IT	2	1	24	15	24	22	24	112
CY	0	0	1	1	0	0	2	4
LV	0	0	0	2	0	1	3	6
LT	0	0	0	0	1	0	0	1
LU	0	0	0	0	0	0	0	0
HU	0	0	0	4	2	6	5	17
MT	0	0	0	0	0	0	0	0
NL	0	0	8	3	9	6	6	32
AT	0	0	6	3	3	1	3	16
PL	0	3	15	9	10	20	14	71
PT	0	0	1	1	9	17	15	43
RO	0	0	1	2	10	9	8	30
SI	0	0	0	2	1	1	0	4
SK	0	0	1	2	5	2	0	10
FI	0	0	2	0	1	0	0	3
SE	0	1	2	0	0	3	2	8
UK	0	0	1	2	1	2	0	6
EU	11	14	127	102	163	168	154	740
%	1,5%	1,9%	17,2%	13,8%	22,1%	22,7%	20,8%	100,0%
IS	-	-	-	-	-	-	-	-
NO	0	0	2	0	0	0	0	2
CH	0	0	0	0	0	0	1	1

Source: CARE (EU road accidents database) or national publications
Last update: May 2016

Table 31: Number of motorcycle rider and passenger fatalities by age group by country, 2014

	unknown	0-14	15-17	18-24	25-49	50-64	65+	Total
BE	0	0	2	13	45	22	3	85
BG	0	1	2	15	25	2	3	48
CZ	0	0	2	17	58	9	2	88
DK	0	0	0	2	10	6	0	18
DE	0	1	28	98	266	159	35	587
EE	0	0	0	0	0	0	0	0
IE	0	0	0	1	19	5	1	26
EL	1	2	12	59	140	42	22	278
ES	1	0	2	18	190	65	10	287
FR	0	2	10	105	396	110	26	651
HR	0	0	0	6	31	7	0	44
IT	4	3	18	98	381	164	36	704
CY	0	0	0	3	4	2	0	9
LV	2	0	0	4	4	0	0	10
LT	0	0	1	4	7	1	0	13
LU	0	0	0	1	4	3	0	8
HU	0	0	1	18	35	4	0	58
MT	0	0	0	0	3	0	0	3
NL	0	0	0	4	35	8	4	51
AT	0	0	2	10	39	21	4	76
PL	0	0	5	70	147	11	4	237
PT	0	0	3	2	69	15	2	91
RO	0	0	0	7	33	4	1	45
SI	0	0	1	3	7	3	3	17
SK	0	0	0	0	0	0	0	0
FI	0	1	4	0	8	4	0	17
SE	0	0	1	3	18	6	3	31
UK	0	0	3	69	183	76	16	347
EU	10	10	97	624	2.126	742	175	3.785
%	0,3%	0,3%	2,6%	16,5%	56,2%	19,6%	4,6%	100,0%
IS	-	-	-	-	-	-	-	-
NO	0	0	1	0	15	2	2	20
CH	0	0	0	11	25	12	5	53

Source: CARE (EU road accidents database) or national publications
Last update: May 2016

Annual Accident Report 2016

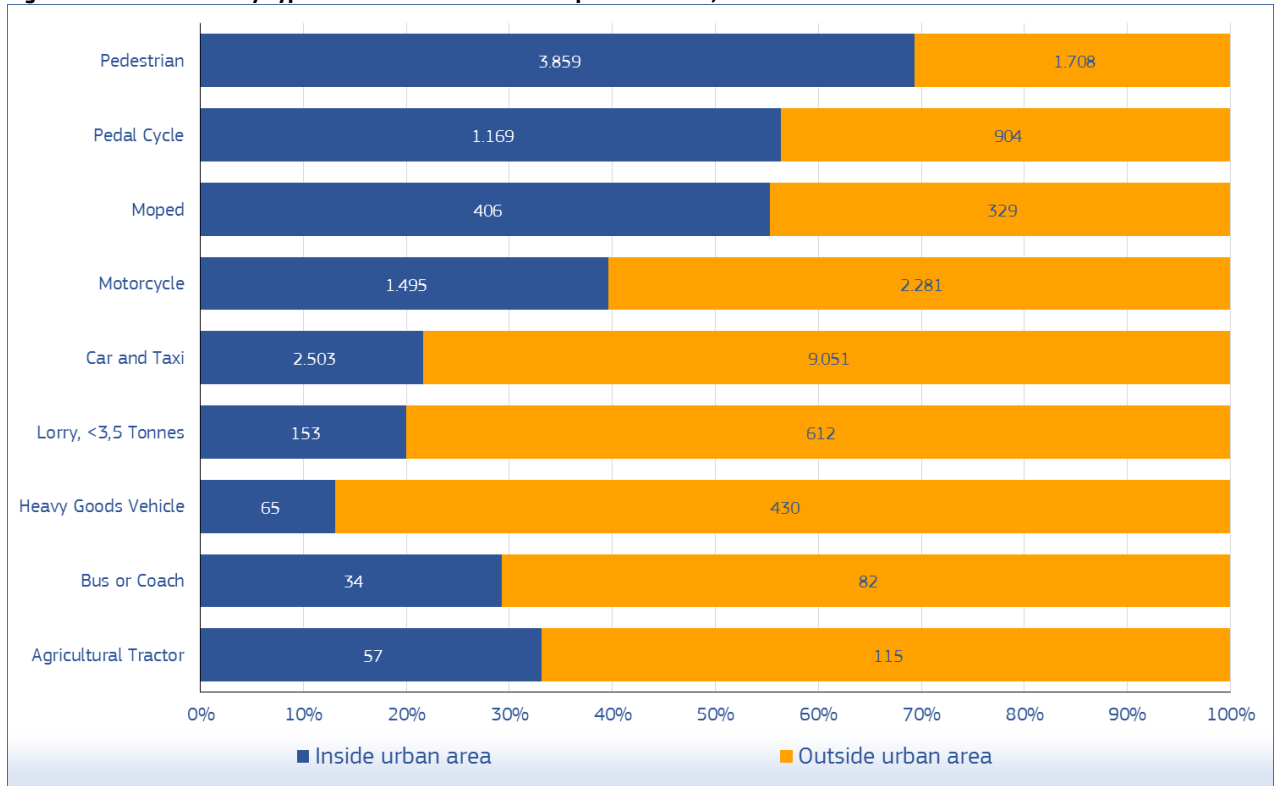
Table 32: Number of car driver and passenger fatalities by age group by country, 2014

	unknown	0-14	15-17	18-24	25-49	50-64	65+	Total
BE	4	3	9	84	145	56	78	379
BG	0	20	28	123	282	84	33	570
CZ	0	4	6	66	150	70	51	347
DK	0	4	2	17	27	16	23	89
DE	0	26	28	320	530	272	403	1.579
EE	0	0	0	12	13	5	3	33
IE	0	2	1	30	38	6	30	107
EL	0	4	3	41	107	70	64	289
ES	3	13	7	85	269	137	207	722
FR	0	63	38	381	582	227	373	1.664
HR	0	3	5	27	52	32	22	141
IT	20	32	17	217	500	263	448	1.497
CY	0	0	1	6	5	0	3	15
LV	4	4	3	21	38	13	8	91
LT	0	8	6	19	54	24	7	118
LU	0	1	0	4	13	4	2	24
HU	0	9	4	25	114	50	54	256
MT	-	1	0	4	4	0	0	10
NL	0	2	1	43	49	22	54	171
AT	0	3	6	37	59	41	45	191
PL	0	35	30	333	547	236	165	1.346
PT	1	3	4	33	74	51	57	223
RO	1	39	19	133	297	151	84	724
SI	0	0	0	7	13	12	8	40
SK	0	1	5	37	61	32	12	148
FI	0	7	2	29	38	22	23	121
SE	0	2	1	16	39	23	41	122
UK	0	15	19	208	254	105	234	835
EU	34	301	240	2.319	4.289	1.987	2.507	11.678
%	0,3%	2,6%	2,1%	19,9%	36,7%	17,0%	21,5%	100,0%
IS	-	-	-	-	-	-	-	-
NO	1	0	0	14	21	11	25	72
CH	0	2	0	21	21	19	34	97

Source: CARE (EU road accidents database) or national publications
Last update: May 2016

4.2.2 Mode of transport by type of area

Figure 20: Fatalities by type of area and mode of transport in the EU, 2014



Source: CARE (EU road accidents database) or national publications
 Last update: May 2016

Table 33: Number of fatalities by mode of transport and type of area by country (part 1), 2014

	Agricultural tractor		Bus or coach		Car + Taxi		Heavy goods vehicle		Lorry, under 3.5 tonnes	
	inside urban area	outside urban area	inside urban area	outside urban area	inside urban area	outside urban area	inside urban area	outside urban area	inside urban area	outside urban area
BE	0	0	1	2	62	212	1	13	3	19
BG	1	0	1	4	124	446	3	30	0	0
CZ	0	1	1	2	69	278	6	17	4	12
DK	0	0	0	0	6	83	0	1	0	9
DE	9	18	3	10	182	1.397	8	64	8	63
EE	0	0	2	6	4	29	1	2	-	-
IE	-	-	0	0	16	91	0	2	2	10
EL	1	12	0	2	85	204	2	10	12	23
ES	1	12	3	23	71	651	2	46	6	105
FR	4	9	2	7	249	1.415	1	55	19	123
HR	3	5	0	0	73	68	1	3	5	0
IT	6	20	2	3	401	1.096	3	43	28	81
CY	0	0	0	0	10	5	0	-	3	1
LV	0	2	0	1	23	62	2	3	0	5
LT	-	-	-	-	-	-	-	-	-	-
LU	0	0	0	0	4	20	0	0	0	0
HU	-	-	1	0	58	198	5	9	3	22
MT	0	-	0	-	9	-	0	-	0	-
NL	1	0	0	1	19	128	0	6	0	7
AT	3	5	0	1	26	165	0	9	0	10
PL	7	12	1	11	381	965	20	72	0	0
PT	15	9	1	1	69	154	1	7	18	31
RO	2	1	7	2	311	413	7	10	31	36
SI	2	1	0	0	12	28	0	1	1	4
SK	1	0	0	2	48	100	1	5	2	8
FI	0	3	0	0	14	107	0	4	1	9
SE	0	0	0	2	10	110	0	5	1	7
UK	1	5	9	2	167	626	1	13	6	27
EU	57	115	34	82	2.503	9.051	65	430	153	612
%	33,1%	66,9%	29,3%	70,7%	21,7%	78,3%	13,1%	86,9%	20,0%	80,0%
IS	-	0	0	0	0	3	0	0	0	1
NO	0	2	0	7	6	66	0	7	0	1
CH	1	4	0	2	16	81	1	1	1	2

Source: CARE (EU road accidents database) or national publications

Last update: May 2016

Table 34: Number of fatalities by mode of transport and type of area by country (part 2), 2014

	Moped		Motor cycle		Pedal cycle		Pedestrian		Total		Total
	inside urban area	outside urban area	inside urban area	outside urban area	inside urban area	outside urban area	inside urban area	outside urban area	inside urban area	outside urban area	
BE	9	6	22	44	30	37	58	24	186	357	543
BG	5	0	21	27	20	9	135	63	310	579	889
CZ	4	4	30	58	33	35	85	45	232	452	684
DK	8	5	6	12	14	16	12	10	46	136	182
DE	44	43	122	465	230	166	371	156	977	2.382	3.359
EE	0	-	0	-	0	-	12	14	19	51	70
IE	-	-	4	22	1	4	12	19	35	148	183
EL	16	4	182	96	9	10	93	32	400	393	793
ES	32	21	99	188	22	54	203	132	439	1.233	1.672
FR	77	88	219	430	70	89	342	157	983	2.373	3.356
HR	6	5	26	18	19	0	56	17	189	116	305
IT	74	38	359	345	158	115	468	110	1.499	1.851	3.350
CY	3	1	7	2	1	-	8	2	32	11	43
LV	4	2	5	4	6	10	29	38	69	127	196
LT	-	-	-	-	-	-	2	-	2	0	2
LU	0	0	3	5	0	0	-	1	7	26	33
HU	8	9	25	33	56	42	78	74	234	387	621
MT	-	-	3	-	0	-	-	0	12	0	12
NL	12	17	14	34	67	31	26	22	139	246	385
AT	6	10	18	58	32	13	36	35	121	306	427
PL	33	38	127	110	148	138	735	381	1.452	1.727	3.179
PT	32	11	61	30	24	11	115	30	336	284	620
RO	21	9	29	16	121	30	571	126	1.100	643	1.743
SI	3	1	6	11	11	5	13	7	48	58	106
SK	2	8	0	0	9	12	61	20	124	155	279
FI	2	1	5	12	19	8	20	16	61	160	221
SE	3	4	6	24	18	7	28	21	66	180	246
UK	2	4	96	237	51	62	290	156	623	1.132	1.755
EU	406	329	1.495	2.281	1.169	904	3.859	1.708	9.741	15.513	25.254
%	55,3%	44,7%	39,6%	60,4%	56,4%	43,6%	69,3%	30,7%	38,6%	61,4%	-
IS	0	0	0	0	0	0	0	0	0	0	4
NO	0	2	2	18	8	4	14	4	8	3	141
CH	1	0	15	38	22	12	33	10	10	17	240

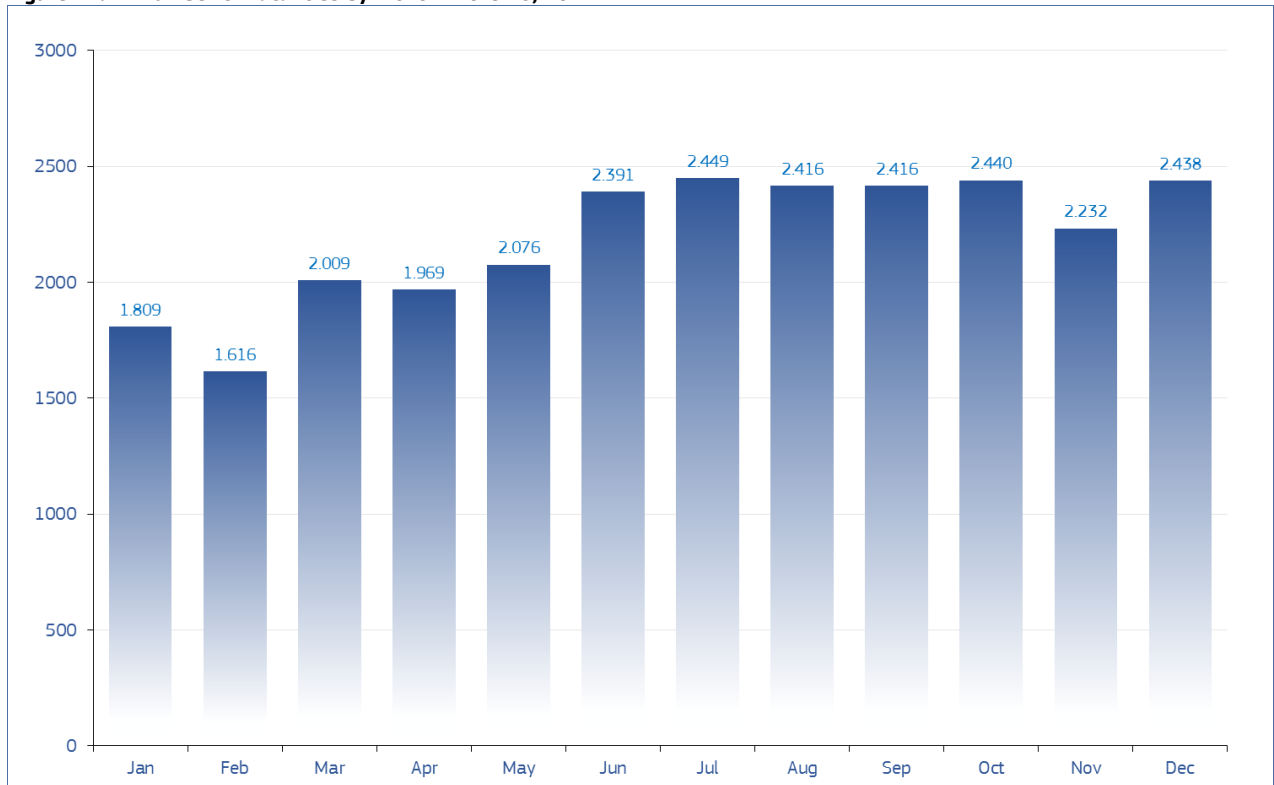
Source: CARE (EU road accidents database) or national publications

Last update: May 2016

4.3 Accident characteristics

4.3.1 Various periods of time (month, day of week, hour of day)

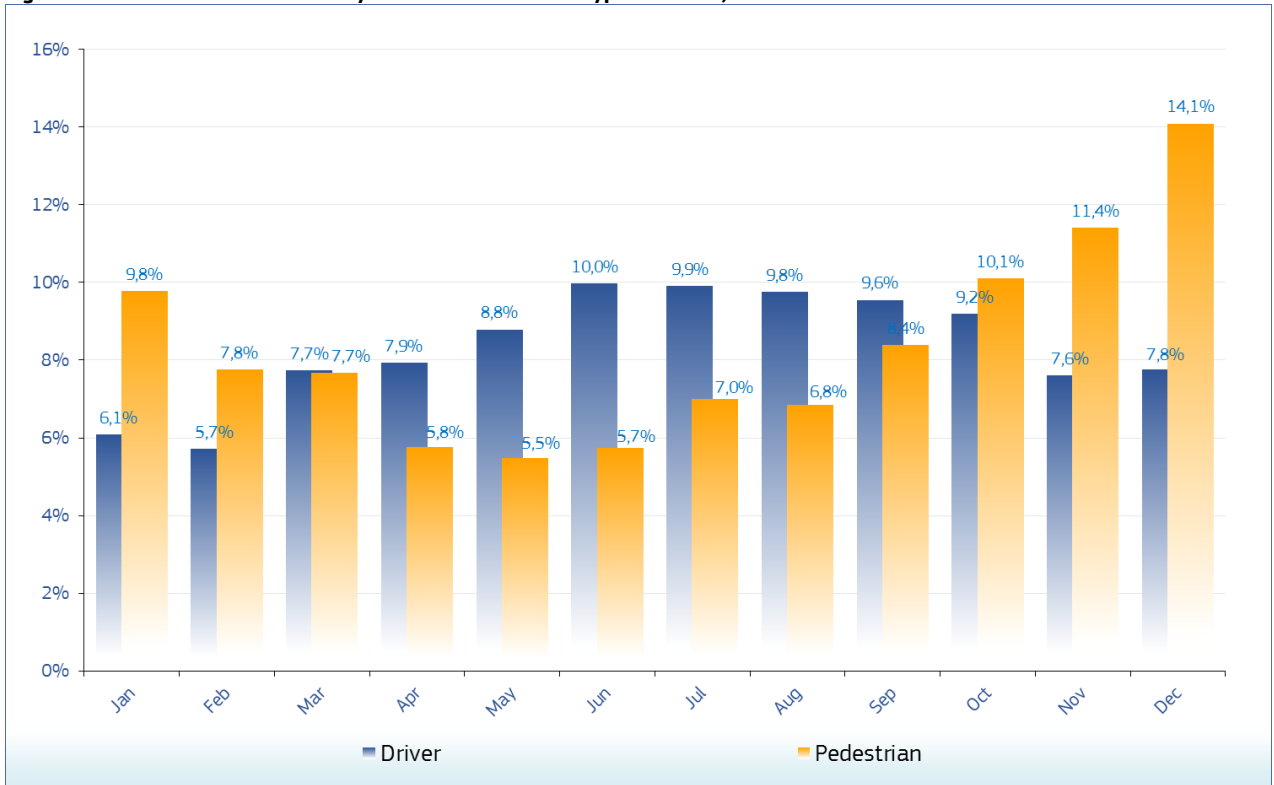
Figure 21: Number of fatalities by month in the EU, 2014



Source: CARE (EU road accidents database) or national publications
Last update: May 2016

Annual Accident Report 2016

Figure 22: Number of fatalities by month and road user type in the EU, 2014



Source: CARE (EU road accidents database) or national publications
 Last update: May 2016

Table 35: Number of fatalities by month by country (January to June), 2014

	January	February	March	April	May	June
BE	53	49	77	55	63	73
BG	46	56	55	75	93	66
CZ	46	26	55	40	53	71
DK	17	12	8	17	12	11
DE	219	186	244	297	286	339
EE	10	4	5	8	5	1
IE	19	14	15	12	17	13
EL	54	51	50	56	67	70
ES	112	98	133	142	123	154
FR	235	225	261	254	260	311
HR	17	15	29	16	31	22
IT	247	203	270	256	273	331
CY	2	3	4	2	3	4
LV	8	16	19	10	14	11
LT	28	15	14	16	16	30
LU	3	1	1	2	2	2
HU	39	43	54	44	38	59
MT	3	1	1	2	0	2
NL	33	30	49	38	48	42
AT	36	36	41	36	39	50
PL	216	210	217	231	258	275
PT	49	42	52	37	53	46
RO	123	113	128	124	129	149
SI	7	6	11	7	12	13
SK	16	12	44	15	11	24
FI	17	14	13	12	16	24
SE	18	17	21	19	22	28
UK	136	118	138	146	132	170
EU	1.809	1.616	2.009	1.969	2.076	2.391
%	6,9%	6,2%	7,7%	7,5%	7,9%	9,1%
IS	2	0	1	0	0	0
NO	9	14	9	7	18	18
CH	16	8	17	26	26	23

Source: CARE (EU road accidents database) or national publications
Last update: May 2016

Table 36: Number of fatalities by month by country (July to December), 2014

	July	August	September	October	November	December	Total
BE	60	50	70	55	67	55	727
BG	100	97	78	106	71	58	901
CZ	78	70	77	58	53	61	688
DK	21	21	13	11	13	26	182
DE	341	283	327	292	262	301	3.377
EE	9	8	6	7	7	8	78
IE	18	19	17	13	15	16	188
EL	79	87	72	72	63	74	795
ES	153	156	163	144	158	155	1.688
FR	302	306	317	347	280	286	3.384
HR	44	28	26	34	26	20	308
IT	296	321	285	329	274	296	3.381
CY	10	3	2	3	5	4	45
LV	24	23	17	23	17	30	212
LT	27	16	21	24	24	36	267
LU	4	2	3	9	4	2	35
HU	45	63	41	60	57	83	626
MT	2	1	0	0	1	0	13
NL	45	36	43	40	35	37	476
AT	33	42	35	29	27	26	430
PL	275	293	312	323	272	320	3.202
PT	60	61	59	54	56	69	638
RO	154	180	167	180	200	171	1.818
SI	10	8	16	10	11	14	125
SK	41	40	31	31	26	30	321
FI	30	22	20	18	18	25	229
SE	27	25	32	15	16	30	270
UK	161	155	166	153	174	205	1.854
EU	2.449	2.416	2.416	2.440	2.232	2.438	26.258
%	9,3%	9,2%	9,2%	9,3%	8,5%	9,3%	100,0%
IS	0	1	0	0	0	0	4
NO	18	18	15	9	7	5	147
CH	25	23	19	24	22	14	243

Source: CARE (EU road accidents database) or national publications
Last update: May 2016

Table 37: Number of driver fatalities by month by country (January to June), 2014

	January	February	March	April	May	June
BE	39	35	54	38	44	53
BG	19	28	27	36	42	34
CZ	25	18	36	29	34	52
DK	12	6	7	15	10	8
DE	133	125	173	225	230	271
EE	3	3	4	6	5	0
IE	13	11	11	7	11	11
EL	32	34	36	35	49	54
ES	62	59	86	86	85	103
FR	166	151	179	166	199	212
HR	10	5	20	9	21	15
IT	154	128	178	183	199	238
CY	1	1	4	2	1	4
LV	1	6	5	2	7	5
LT	4	3	7	9	9	14
LU	2	1	1	1	2	2
HU	13	22	30	35	25	36
MT	1	0	1	2	0	1
NL	25	23	46	29	38	36
AT	20	20	26	26	34	40
PL	72	84	105	123	145	167
PT	28	26	28	24	33	27
RO	40	36	51	61	67	57
SI	3	3	5	7	7	12
SK	7	5	32	11	8	16
FI	11	10	8	10	13	20
SE	10	13	10	12	17	17
UK	80	71	84	94	88	111
EU	986	927	1.254	1.283	1.423	1.616
%	6,1%	5,7%	7,7%	7,9%	8,8%	10,0%
IS	1	0	0	0	0	0
NO	4	6	5	6	14	15
CH	11	7	12	21	20	18

Source: CARE (EU road accidents database) or national publications
Last update: May 2016

Table 38: Number of driver fatalities by month by country (July to December), 2014

	July	August	September	October	November	December	Total
BE	37	34	52	42	47	36	511
BG	45	53	35	52	40	25	436
CZ	55	50	51	38	29	34	451
DK	15	16	8	8	10	14	129
DE	265	225	243	205	165	161	2.421
EE	4	4	4	2	3	3	41
IE	11	10	12	8	8	11	124
EL	57	61	43	46	46	47	540
ES	98	96	105	94	79	90	1.043
FR	218	213	235	248	186	191	2.364
HR	23	25	17	19	11	10	185
IT	207	234	192	221	171	186	2.291
CY	6	0	2	2	3	1	27
LV	13	11	10	8	5	15	88
LT	13	10	7	7	6	8	97
LU	4	2	3	5	3	1	27
HU	29	40	24	33	36	37	360
MT	1	1	0	0	0	0	7
NL	37	27	36	31	29	25	382
AT	24	33	29	22	23	18	315
PL	173	157	164	144	109	102	1.545
PT	40	44	40	34	36	37	397
RO	62	62	62	77	67	51	693
SI	9	7	12	8	8	7	88
SK	21	25	16	15	14	13	183
FI	23	17	16	12	9	12	161
SE	21	19	22	14	7	16	178
UK	95	104	107	93	81	104	1.112
EU	1.606	1.580	1.547	1.488	1.231	1.255	16.196
%	9,9%	9,8%	9,6%	9,2%	7,6%	7,8%	100,0%
IS	0	1	0	0	0	0	2
NO	12	14	11	5	5	5	102
CH	16	16	13	16	12	7	169

Source: CARE (EU road accidents database) or national publications
Last update: May 2016

Table 39: Number of passenger fatalities by month by country (January to June), 2014

	January	February	March	April	May	June
BE	3	8	9	11	11	14
BG	11	15	15	26	22	20
CZ	6	2	9	4	12	11
DK	3	4	1	0	1	2
DE	27	21	32	35	32	45
EE	1	0	1	0	0	0
IE	2	1	1	4	3	2
EL	11	7	5	11	10	11
ES	15	16	22	36	20	28
FR	21	29	41	53	38	69
HR	3	1	7	2	7	2
IT	34	28	48	48	49	48
CY	0	1	0	0	2	0
LV	0	4	10	2	4	3
LT	6	4	3	2	1	11
LU	0	0	0	1	0	0
HU	5	12	10	4	5	15
MT	1	1	0	0	0	1
NL	3	3	1	3	2	2
AT	5	5	6	3	3	6
PL	34	31	31	41	57	57
PT	5	6	9	6	10	10
RO	35	22	26	29	26	45
SI	0	1	3	0	0	1
SK	4	3	3	3	2	4
FI	3	2	2	0	1	3
SE	5	1	5	3	3	3
UK	18	16	15	26	17	31
EU	261	244	315	353	338	444
%	6,1%	5,7%	7,3%	8,2%	7,8%	10,3%
IS	1	0	1	0	0	0
NO	3	5	2	0	3	2
CH	1	0	2	4	3	2

Source: CARE (EU road accidents database) or national publications
Last update: May 2016

Table 40: Number of passenger fatalities by month by country (July to December), 2014

	July	August	September	October	November	December	Total
BE	12	8	8	2	5	5	96
BG	41	27	29	32	15	14	267
CZ	15	16	15	4	6	7	107
DK	3	3	3	2	0	9	31
DE	47	29	43	43	30	45	429
EE	3	2	0	0	0	1	8
IE	6	6	2	1	3	2	33
EL	13	14	14	11	7	16	130
ES	25	36	26	25	35	24	309
FR	52	56	33	45	32	52	521
HR	8	2	5	4	5	4	50
IT	46	47	43	50	41	30	512
CY	2	0	0	1	1	0	7
LV	6	8	2	7	5	2	53
LT	6	6	2	6	7	7	61
LU	0	0	0	3	1	0	5
HU	10	13	5	7	10	18	114
MT	0	0	0	0	1	0	4
NL	5	3	3	4	5	6	40
AT	2	8	2	3	0	1	44
PL	42	64	50	53	43	38	541
PT	8	7	11	9	2	13	96
RO	40	51	43	30	50	31	428
SI	0	1	3	1	3	4	17
SK	8	7	8	4	5	6	57
FI	6	0	0	4	5	6	32
SE	3	4	8	0	3	2	40
UK	32	23	28	19	26	27	278
EU	441	441	386	370	346	370	4.310
%	10,2%	10,2%	9,0%	8,6%	8,0%	8,6%	100,0%
IS	0	0	0	0	0	0	2
NO	6	3	3	0	0	0	27
CH	5	3	3	2	4	2	31

Source: CARE (EU road accidents database) or national publications
Last update: May 2016

Table 41: Number of pedestrian fatalities by month by country (January to June), 2014

	January	February	March	April	May	June
BE	10	5	13	4	8	6
BG	16	13	13	13	29	12
CZ	15	6	10	7	7	8
DK	2	2	0	2	1	1
DE	59	40	39	37	24	23
EE	6	1	0	2	0	1
IE	4	2	3	1	3	0
EL	11	10	9	10	8	5
ES	34	23	25	19	17	23
FR	48	45	41	35	23	30
HR	4	9	2	5	3	5
IT	59	47	44	25	25	45
CY	1	1	0	0	0	0
LV	7	6	4	6	3	3
LT	18	8	4	5	6	5
LU	1	0	0	0	0	0
HU	21	9	14	5	8	8
MT	1	0	0	0	0	0
NL	5	4	2	6	8	2
AT	11	11	9	7	2	4
PL	110	95	81	67	56	51
PT	16	10	15	7	10	9
RO	48	55	51	34	36	47
SI	4	2	3	0	5	0
SK	5	4	9	1	1	4
FI	3	2	3	2	2	1
SE	3	3	6	4	2	8
UK	38	31	39	26	27	28
EU	560	444	439	330	314	329
%	9,8%	7,8%	7,7%	5,8%	5,5%	5,7%
IS	0	0	0	0	0	0
NO	2	3	2	1	1	1
CH	4	1	3	1	3	3

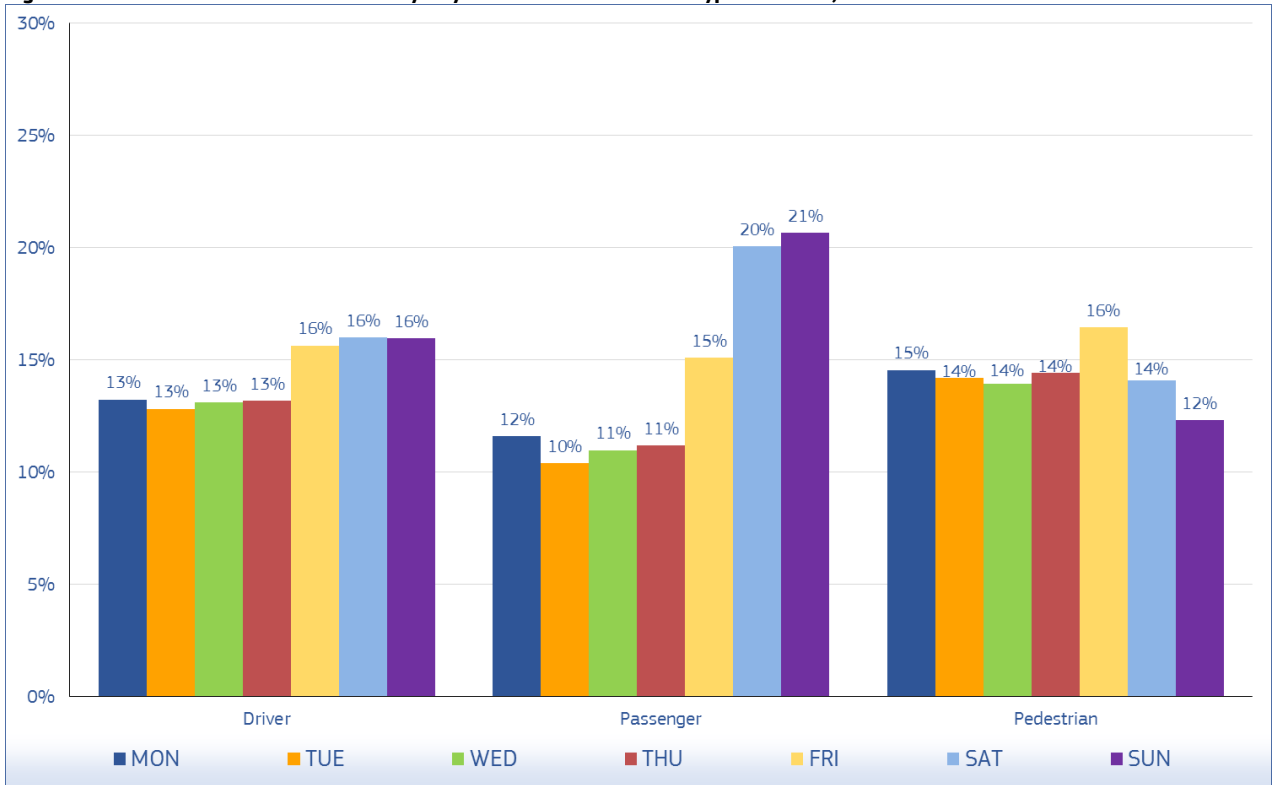
Source: CARE (EU road accidents database) or national publications
Last update: May 2016

Table 42: Number of pedestrian fatalities by month by country (July to December), 2014

	July	August	September	October	November	December	Total
BE	11	7	8	9	14	11	106
BG	14	17	14	22	16	19	198
CZ	8	4	11	16	18	20	130
DK	3	2	2	1	3	3	22
DE	29	29	41	44	67	95	527
EE	2	1	1	5	4	3	26
IE	1	3	3	4	4	3	31
EL	9	12	15	15	10	11	125
ES	30	23	32	25	43	40	336
FR	32	37	49	54	62	43	499
HR	13	1	4	11	10	6	73
IT	43	40	50	58	62	80	578
CY	1	3	0	0	1	3	10
LV	5	4	5	8	7	13	71
LT	8	0	12	11	11	21	109
LU	0	0	0	1	0	1	3
HU	6	10	12	20	11	28	152
MT	1	0	0	0	0	0	2
NL	3	6	4	4	1	5	50
AT	7	1	4	4	4	7	71
PL	60	72	98	126	120	180	1.116
PT	12	10	8	11	18	19	145
RO	52	67	62	73	83	89	697
SI	1	0	1	1	0	3	20
SK	12	8	7	12	7	11	81
FI	1	5	4	2	4	7	36
SE	3	2	2	1	6	12	52
UK	34	28	31	41	67	74	464
EU	401	392	480	579	653	807	5.730
%	7,0%	6,8%	8,4%	10,1%	11,4%	14,1%	100,0%
IS	0	0	0	0	0	0	0
NO	0	1	1	4	2	0	18
CH	4	4	3	6	6	5	43

Source: CARE (EU road accidents database) or national publications
Last update: May 2016

Figure 23: Total number of fatalities by day of week and road user type in the EU, 2014



Source: CARE (EU road accidents database) or national publications
 Last update: May 2016

Table 43: Total number of fatalities by day of week by country, 2014

	Monday	Tuesday	Wednesday	Thursday	Friday	Saturday	Sunday	Total
BE	90	90	105	81	122	126	113	727
BG	94	94	105	133	161	156	158	901
CZ	94	90	90	92	120	115	87	688
DK	25	25	26	28	31	19	28	182
DE	457	436	445	477	561	536	465	3.377
EE	7	4	12	12	16	16	11	78
IE	29	19	21	25	35	27	32	188
EL	90	126	96	90	134	115	144	795
ES	234	206	206	224	245	290	281	1.688
FR	411	404	409	447	578	595	540	3.384
HR	34	33	35	49	64	54	39	308
IT	444	450	469	448	453	544	573	3.381
CY	2	3	5	11	12	9	3	45
LV	22	35	30	26	31	42	26	212
LT	29	39	24	25	43	53	54	267
LU	2	4	5	7	6	7	4	35
HU	80	77	92	95	94	98	90	626
MT	1	1	2	0	1	2	6	13
NL	81	58	76	59	62	66	74	476
AT	63	52	60	55	77	69	54	430
PL	451	428	407	394	504	515	503	3.202
PT	94	81	92	93	74	99	105	638
RO	250	232	244	214	280	245	353	1.818
SI	21	16	13	12	21	20	22	125
SK	50	42	42	40	45	44	58	321
FI	33	38	30	21	36	36	35	229
SE	36	27	40	42	48	44	33	270
UK	258	231	223	244	277	324	297	1.854
EU	3.482	3.341	3.404	3.444	4.131	4.266	4.188	26.258
%	13,3%	12,7%	13,0%	13,1%	15,7%	16,2%	16,0%	100,0%
IS	1	0	0	1	0	0	2	4
NO	26	26	17	17	16	19	26	147
CH	25	34	33	37	42	39	33	243

Source: CARE (EU road accidents database) or national publications
Last update: May 2016

Annual Accident Report 2016

Table 44: Number of fatalities by day of week by country, 2014 (drivers)

	Monday	Tuesday	Wednesday	Thursday	Friday	Saturday	Sunday	Total
BE	61	64	75	54	90	88	79	511
BG	42	37	50	53	87	77	90	436
CZ	64	66	56	56	83	71	55	451
DK	16	17	17	24	23	12	20	129
DE	336	306	332	354	406	360	327	2.421
EE	4	0	6	4	10	10	7	41
IE	19	16	10	16	26	16	21	124
EL	55	88	70	67	90	84	86	540
ES	138	128	131	144	154	162	187	1.043
FR	307	283	288	312	394	398	382	2.364
HR	21	19	24	27	38	35	21	185
IT	303	311	311	307	295	380	384	2.291
CY	1	3	2	7	5	6	3	27
LV	6	14	14	15	10	17	12	88
LT	9	14	9	11	18	18	18	97
LU	2	4	4	6	4	5	2	27
HU	49	39	60	60	47	56	49	360
MT	1	1	1	0	1	1	2	7
NL	66	45	61	46	50	53	61	382
AT	48	42	44	36	54	48	43	315
PL	210	207	198	193	239	259	239	1.545
PT	60	52	59	54	41	63	68	397
RO	95	94	94	72	100	97	141	693
SI	16	13	11	8	12	13	15	88
SK	22	22	23	20	32	27	37	183
FI	23	27	22	18	23	25	23	161
SE	24	23	24	26	29	28	24	178
UK	147	143	129	144	174	184	191	1.112
EU	2.145	2.078	2.125	2.134	2.535	2.593	2.587	16.196
%	13,2%	12,8%	13,1%	13,2%	15,7%	16,0%	16,0%	100,0%
IS	0	0	0	1	0	0	1	2
NO	20	15	12	13	14	12	16	102
CH	15	23	24	26	27	28	26	169

Source: CARE (EU road accidents database) or national publications
Last update: May 2016

Table 45: Number of fatalities by day of week by country, 2014 (passengers)

	Monday	Tuesday	Wednesday	Thursday	Friday	Saturday	Sunday	Total
BE	16	4	13	11	7	25	20	96
BG	31	30	29	29	50	58	40	267
CZ	14	11	9	17	12	25	19	107
DK	4	4	5	1	6	4	7	31
DE	42	39	44	57	65	106	76	429
EE	0	1	1	1	2	2	1	8
IE	7	1	3	3	5	8	6	33
EL	18	20	8	7	23	16	38	130
ES	41	35	31	35	36	77	53	309
FR	51	51	43	60	100	124	92	521
HR	6	5	1	9	12	7	10	50
IT	59	51	59	62	69	81	131	512
CY	0	0	1	3	1	2	0	7
LV	6	10	6	4	4	13	10	53
LT	4	5	2	6	5	18	21	61
LU	0	0	1	0	2	0	2	5
HU	9	12	15	16	14	19	29	114
MT	0	0	0	0	0	1	3	4
NL	7	0	12	4	5	7	5	40
AT	7	1	8	5	9	11	3	44
PL	66	70	61	59	80	99	106	541
PT	9	12	16	10	10	16	23	96
RO	51	44	53	34	75	62	109	428
SI	1	1	2	2	3	3	5	17
SK	9	8	8	7	5	8	12	57
FI	5	2	2	0	6	7	10	32
SE	2	2	5	6	9	9	7	40
UK	35	29	35	34	36	56	53	278
EU	500	448	473	482	651	864	891	4.310
%	11,6%	10,4%	11,0%	11,2%	15,1%	20,1%	20,7%	100,0%
IS	1	0	0	0	0	0	1	2
NO	4	9	2	2	1	3	6	27
CH	5	3	4	3	7	5	4	31

Source: CARE (EU road accidents database) or national publications
Last update: May 2016

Table 46: Number of fatalities by day of week by country, 2014 (pedestrians)

	Monday	Tuesday	Wednesday	Thursday	Friday	Saturday	Sunday	Total
BE	12	20	12	15	22	12	13	106
BG	21	27	26	51	24	21	28	198
CZ	16	13	25	19	25	19	13	130
DK	5	4	4	3	2	3	1	22
DE	79	91	69	66	90	70	62	527
EE	3	3	4	7	4	3	2	26
IE	3	2	8	6	4	3	5	31
EL	17	18	18	16	21	15	20	125
ES	55	43	44	45	55	51	41	336
FR	53	70	78	75	84	73	66	499
HR	7	9	10	13	14	12	8	73
IT	82	88	99	79	89	83	58	578
CY	1	0	1	1	6	1	0	10
LV	10	11	10	7	17	12	4	71
LT	16	20	13	8	20	17	15	109
LU	0	0	0	1	0	2	0	3
HU	22	26	17	19	33	23	12	152
MT	0	0	1	0	0	0	1	2
NL	6	13	3	9	7	6	6	50
AT	8	9	8	14	14	10	8	71
PL	175	151	148	142	185	157	158	1.116
PT	25	17	17	29	23	20	14	145
RO	104	94	97	108	105	86	103	697
SI	4	2	0	2	6	4	2	20
SK	19	12	11	13	8	9	9	81
FI	5	9	6	3	7	4	2	36
SE	10	2	11	10	10	7	2	52
UK	76	59	59	66	67	84	53	464
EU	834	813	799	827	942	807	706	5.730
%	14,6%	14,2%	14,0%	14,4%	16,4%	14,1%	12,3%	100,0%
IS	0	0	0	0	0	0	0	0
NO	2	2	3	2	1	4	4	18
CH	5	8	5	8	8	6	3	43

Source: CARE (EU road accidents database) or national publications
Last update: May 2016

Table 47: Number of fatalities by hour of day (00-08) by country, 2014

	00	01	02	03	04	05	06	07	08
BE	21	30	24	24	22	28	25	23	25
BG	5	51	20	12	28	23	30	24	36
CZ	15	13	16	9	13	24	26	33	35
DK	6	3	1	4	2	5	4	7	9
DE	71	62	42	56	64	100	122	138	130
EE	0	1	1	3	2	2	1	1	2
IE	6	7	10	5	5	3	5	4	5
EL	26	13	18	15	34	32	28	34	32
ES	41	23	30	32	20	31	58	90	71
FR	95	73	79	60	76	96	126	136	151
HR	6	9	5	7	7	8	14	16	17
IT	90	108	61	83	66	74	71	112	119
CY	1	1	1	3	2	2	1	2	2
LV	12	6	2	4	5	2	5	6	18
LT	9	7	5	5	3	5	4	22	9
LU	0	1	2	0	1	0	2	0	2
HU	12	14	7	8	25	30	25	28	20
MT	0	0	0	2	2	0	1	1	0
NL	5	9	10	4	8	12	16	23	23
AT	5	10	7	10	11	10	14	20	17
PL	68	61	53	69	58	88	126	115	116
PT	9	9	14	14	8	9	16	41	37
RO	49	36	36	42	34	60	63	58	57
SI	1	1	3	5	5	4	7	3	3
SK	6	4	7	4	1	5	36	14	9
FI	6	8	9	3	5	5	7	7	5
SE	4	6	7	2	4	3	4	4	8
UK	49	50	42	32	37	50	45	72	69
EU	618	616	512	517	548	711	882	1.034	1.027
%	2,4%	2,3%	2,0%	2,0%	2,1%	2,7%	3,4%	3,9%	3,9%
IS	0	0	0	0	0	0	0	0	0
NO	6	2	5	2	0	4	4	5	13
CH	3	4	1	8	4	4	12	5	9

Source: CARE (EU road accidents database) or national publications
Last update: May 2016

Annual Accident Report 2016

Table 48: Number of fatalities by hour of day (09-16) by country, 2014

	09	10	11	12	13	14	15	16
BE	26	19	36	27	28	32	49	53
BG	30	44	40	27	31	39	57	58
CZ	24	26	28	36	28	41	52	44
DK	4	9	6	4	12	18	18	10
DE	132	165	172	194	215	245	235	251
EE	1	2	3	3	2	6	2	2
IE	4	5	9	9	9	16	9	11
EL	29	42	29	51	33	36	27	41
ES	69	76	87	102	110	71	77	97
FR	147	161	189	127	130	184	205	227
HR	9	12	10	15	16	13	12	19
IT	129	169	164	183	144	133	186	215
CY	1	3	4	2	0	2	3	0
LV	4	7	4	9	11	14	10	13
LT	6	7	6	11	5	17	14	11
LU	0	4	1	1	3	0	1	7
HU	30	26	34	27	28	31	43	44
MT	1	0	1	1	0	0	0	0
NL	15	20	31	22	29	32	38	32
AT	24	32	23	24	23	15	31	27
PL	83	122	131	144	145	168	165	219
PT	25	26	37	27	25	42	39	31
RO	67	56	72	77	94	86	91	111
SI	1	5	7	7	5	7	4	5
SK	11	14	18	12	13	19	10	29
FI	11	15	12	11	10	15	22	15
SE	14	14	18	21	21	21	23	22
UK	64	96	108	71	95	91	124	131
EU	961	1.177	1.280	1.245	1.265	1.394	1.547	1.725
%	3,7%	4,5%	4,9%	4,7%	4,8%	5,3%	5,9%	6,6%
IS	1	0	0	2	0	0	0	0
NO	3	7	9	5	9	14	10	6
CH	11	15	21	7	16	16	21	14

Source: CARE (EU road accidents database) or national publications
Last update: May 2016

Table 49: Number of fatalities by hour of day (17-24) by country, 2014

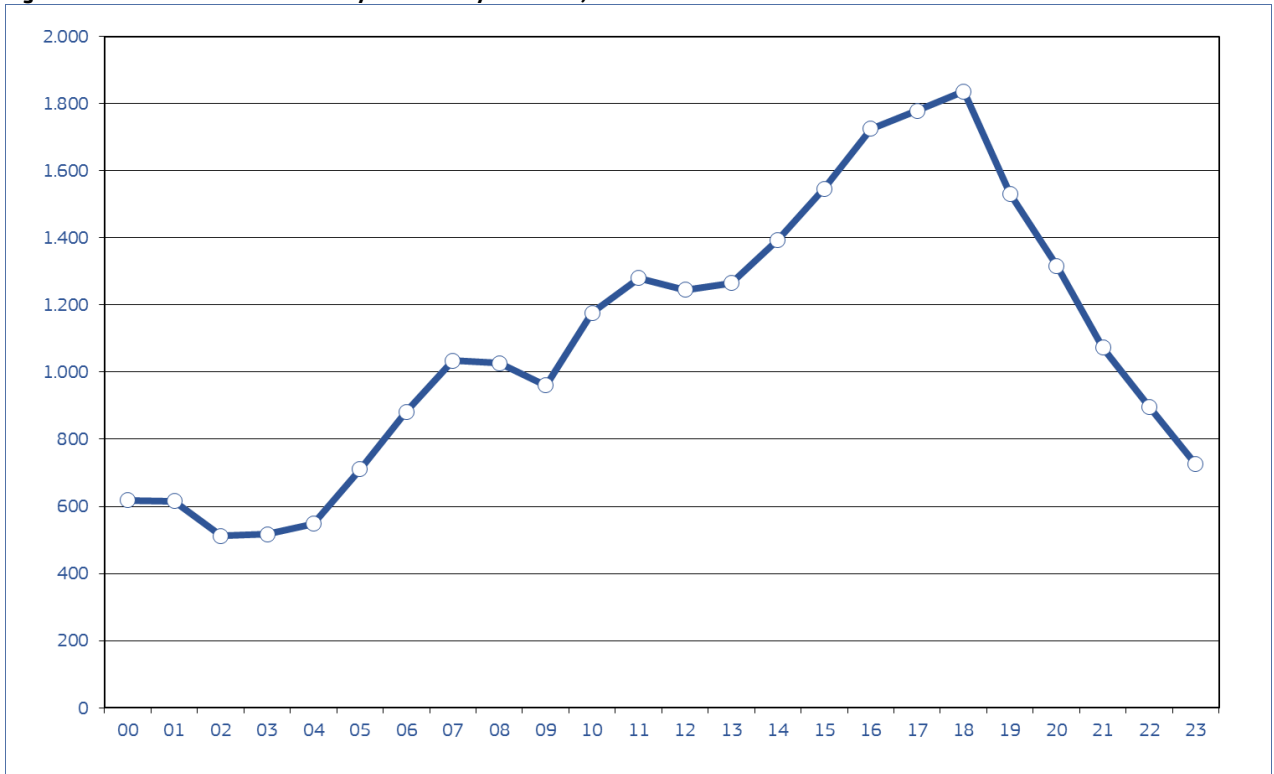
	17	18	19	20	21	22	23	Un- known	Total
BE	52	37	36	28	29	25	23	5	727
BG	58	72	47	45	45	46	33	0	901
CZ	44	52	26	26	26	21	23	7	688
DK	16	13	7	7	7	6	4	0	182
DE	257	201	150	120	95	88	72	0	3.377
EE	5	4	17	6	3	4	5	0	78
IE	13	10	10	8	14	6	5	0	188
EL	42	46	52	37	49	27	22	0	795
ES	78	115	105	103	83	72	47	0	1.688
FR	243	235	178	180	101	92	93	0	3.384
HR	14	28	17	15	23	8	8	0	308
IT	218	298	209	179	160	102	85	23	3.381
CY	3	1	2	2	3	3	1	0	45
LV	7	16	15	15	12	9	6	0	212
LT	24	19	28	19	16	7	8	0	267
LU	4	2	2	0	2	0	0	0	35
HU	46	47	34	32	19	11	5	0	626
MT	0	0	1	0	1	1	1	0	13
NL	33	20	26	17	18	17	16	0	476
AT	29	32	14	14	15	11	12	0	430
PL	228	245	215	208	138	144	93	0	3.202
PT	44	48	48	36	22	20	11	0	638
RO	144	130	130	113	93	66	53	0	1.818
SI	12	14	6	8	5	7	0	0	125
SK	18	23	23	12	9	14	10	0	321
FI	9	12	15	8	9	7	3	0	229
SE	13	12	11	4	9	6	10	9	270
UK	124	104	108	74	66	75	77	0	1.854
EU	1.778	1.836	1.532	1.316	1.072	895	726	44	26.258
%	6,8%	7,0%	5,8%	5,0%	4,1%	3,4%	2,8%	0,2%	100,0%
IS	1	0	0	0	0	0	0	0	4
NO	18	8	3	1	2	2	9	0	147
CH	24	10	17	1	8	5	7	0	243

Source: CARE (EU road accidents database) or national publications

Last update: May 2016

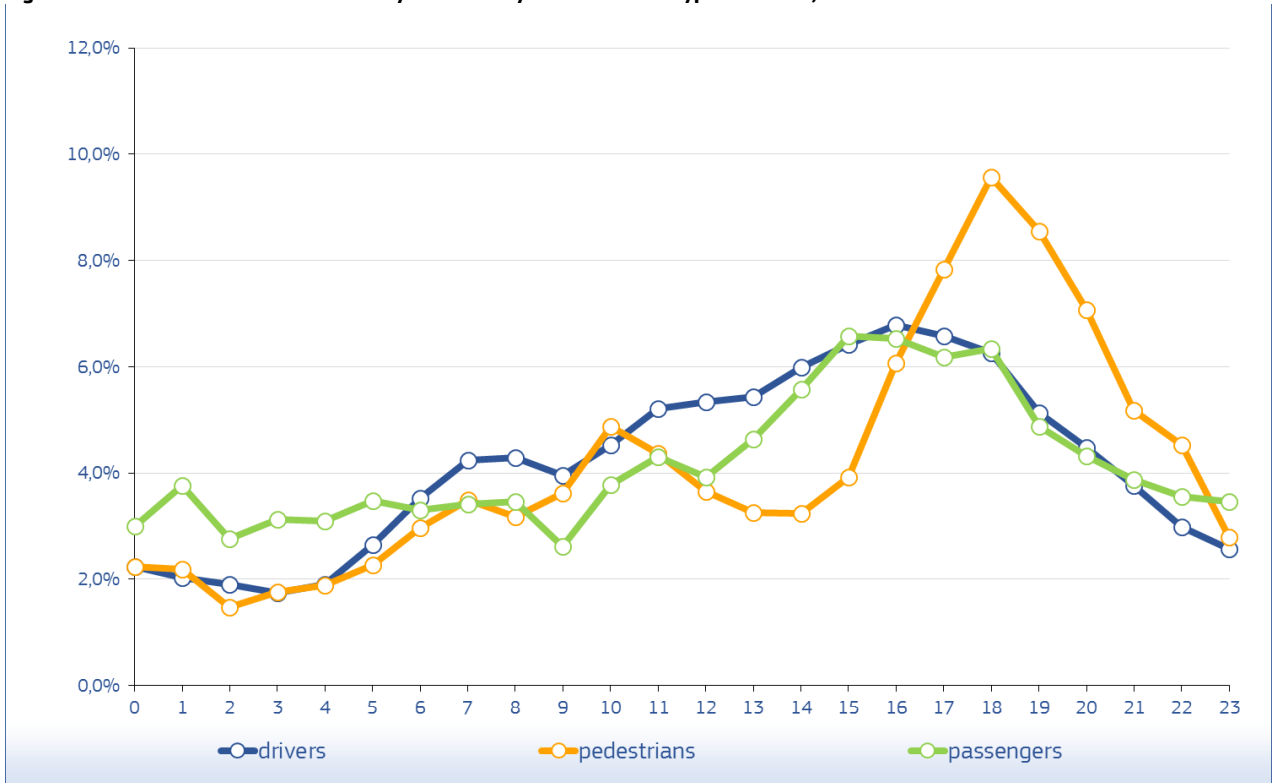
Annual Accident Report 2016

Figure 24: Number of fatalities by hour of day in the EU, 2014



Source: CARE (EU road accidents database) or national publications
 Last update: May 2016

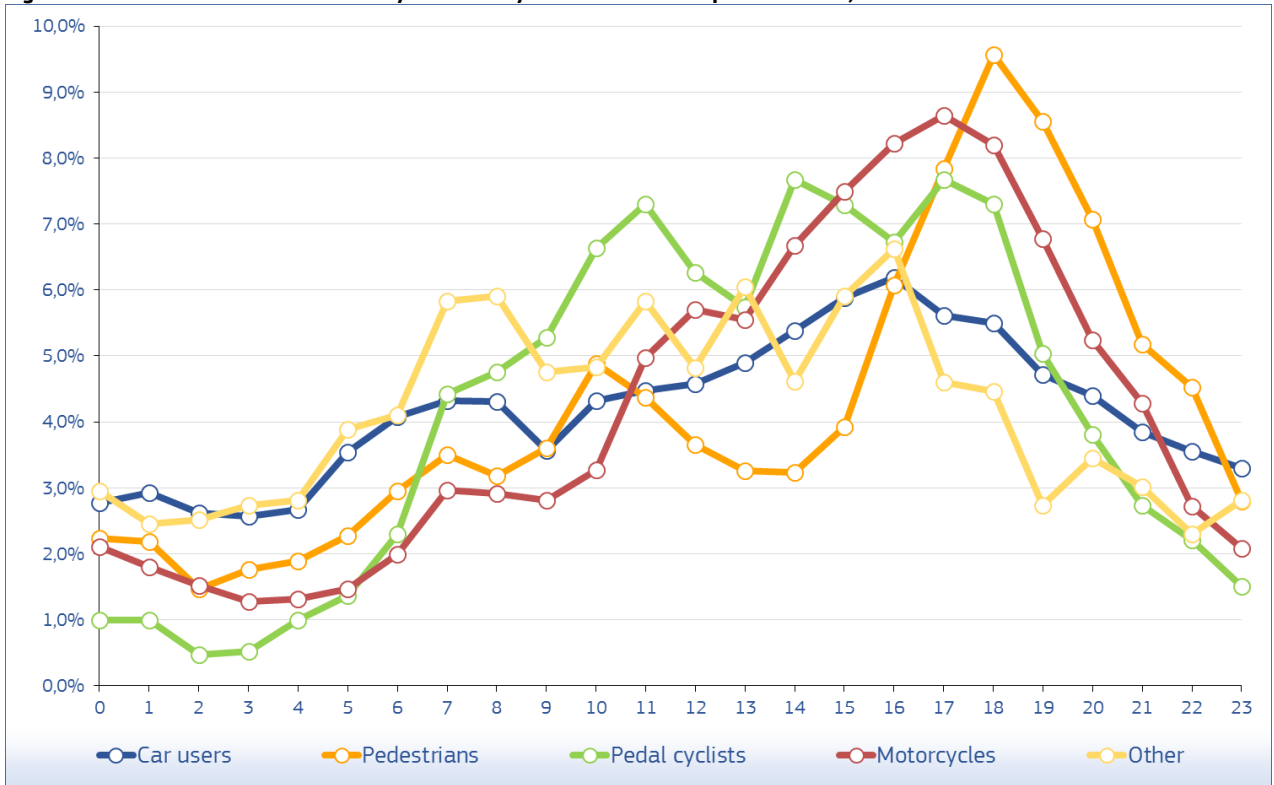
Figure 25: Distribution of fatalities by hour of day and road user type in the EU, 2014



Source: CARE (EU road accidents database) or national publications
 Last update: May 2016

Annual Accident Report 2016

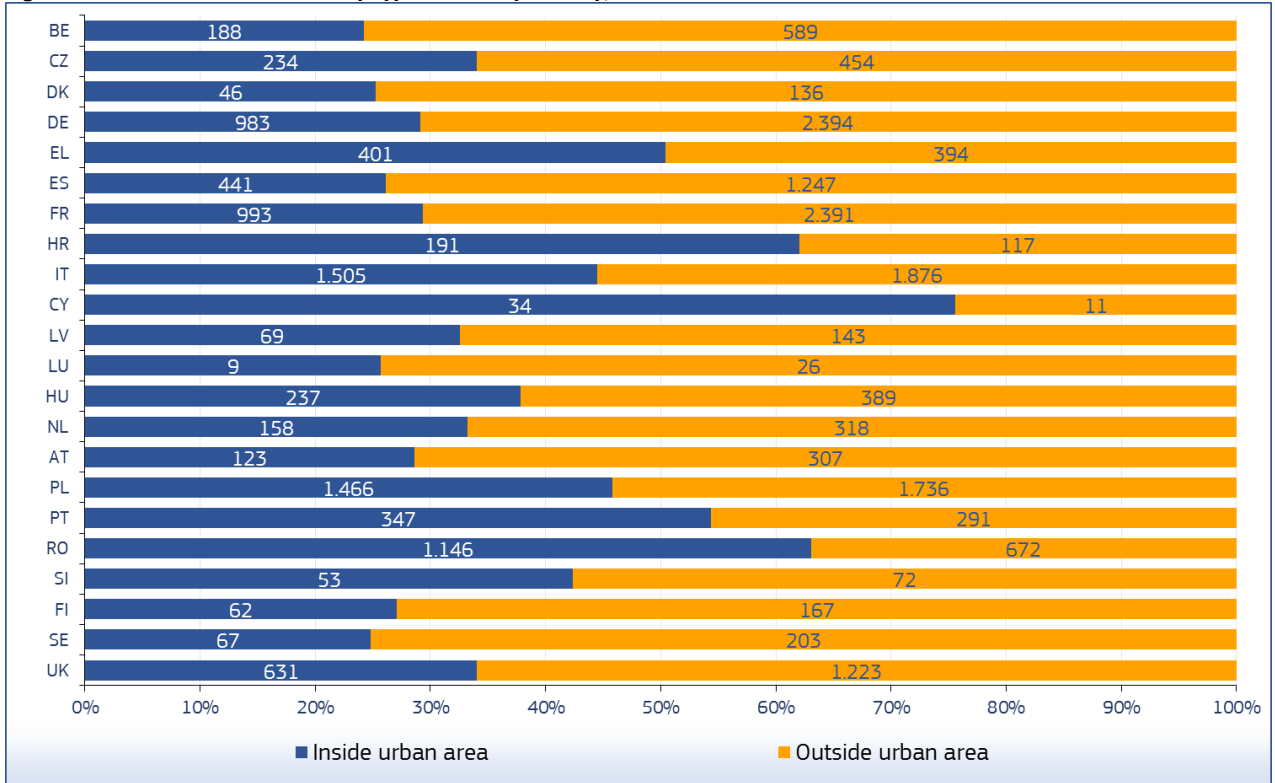
Figure 26: Distribution of fatalities by hour of day and mode of transport in the EU, 2014



Source: CARE (EU road accidents database) or national publications
 Last update: May 2016

4.3.2 Type of area/road

Figure 27: Number of fatalities by type of area by country, 2014



Source: CARE (EU road accidents database) or national publications
 Last update: May 2016

Table 50: Number of fatalities by type of area and road by country, 2014

	Inside urban area		Outside urban area			Total
			motorway	no motorway	unknown	
BE	188	105	420	14	727	
BG	312	36	553	-	901	
CZ	234	23	431	-	688	
DK	46	14	122	-	182	
DE	983	375	2.019	-	3.377	
EE	22	-	56	-	78	
IE	35	8	145	-	188	
EL	401	56	338	-	795	
ES	441	290	957	-	1.688	
FR	993	220	2.171	-	3.384	
HR	191	22	95	-	308	
IT	1.505	287	1.589	-	3.381	
CY	34	3	8	-	45	
LV	69	-	143	-	212	
LT	-	-	-	267	267	
LU	9	3	23	-	35	
HU	237	27	362	-	626	
MT	13	-	0	-	13	
NL	158	57	205	56	476	
AT	123	36	271	-	430	
PL	1.466	56	1.680	-	3.202	
PT	347	50	241	-	638	
RO	1.146	21	651	-	1.818	
SI	53	16	56	-	125	
SK	157	16	148	-	321	
FI	62	8	159	-	229	
SE	67	31	158	14	270	
UK	631	81	1.142	-	1.854	
EU	9.923	1.841	14.143	351	26.258	
%	37,8%	7,0%	53,9%	1,3%	100,0%	
IS	0	-	4	-	4	
NO	30	-	117	0	147	
CH	93	12	138	-	243	

Source: CARE (EU road accidents database) or national publications

Last update: May 2016

4.3.3 Type of junction

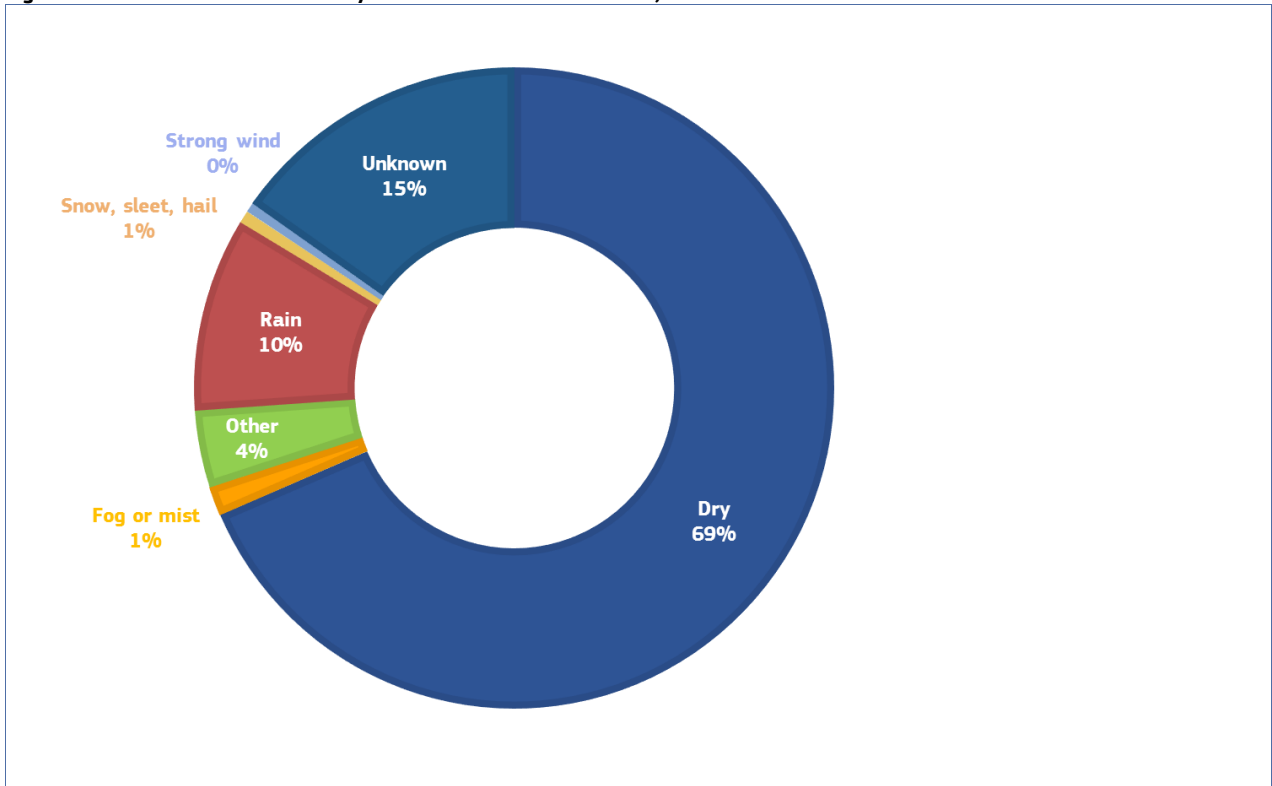
Table 51: Number of fatalities by type of junction by country, 2014

	Not at a junction	Junction Type					other	Unknown	Total
		at-grade - crossroad	at-grade - multiple junction	at-grade - roundabout	at-grade - T or staggered junction	not at grade (interchange)			
BE	575	-	-	5	-	-	84	58	722
BG	782	102	-	-	-	17	-	-	901
CZ	542	45	-	2	72	-	2	-	663
DK	135	26	-	0	16	0	5	-	182
DE	2.605	-	-	-	-	-	0	772	3.377
EE	65	0	-	0	6	-	2	0	73
IE	0	17	-	2	21	-	0	148	188
EL	739	-	-	-	-	-	0	56	795
ES	1.335	125	0	45	130	-	49	-	1.685
FR	2.900	203	-	54	152	-	61	-	3.370
HR	251	15	-	3	32	-	0	3	304
IT	2.547	296	-	79	458	-	-	-	3.380
CY	30	3	-	3	8	-	1	-	45
LV	189	-	-	-	-	-	23	-	212
LT	222	-	-	-	-	-	-	45	267
LU	30	2	0	1	2	0	-	-	35
HU	521	52	1	0	49	-	3	-	626
MT	0	-	-	-	-	-	-	13	13
NL	313	149	-	6	-	-	2	0	470
AT	350	50	-	0	9	-	8	-	417
PL	2.680	0	-	15	0	-	507	-	3.202
PT	522	28	-	10	60	12	1	5	638
RO	1.643	158	-	-	-	-	-	-	1.801
SI	110	8	-	0	-	-	7	-	125
SK	0	-	-	-	-	-	-	321	321
FI	195	-	-	1	-	-	-	29	225
SE	0	-	-	-	-	-	-	270	270
UK	1.206	99	3	31	396	-	119	0	1.854
EU	20.487	1.378	4	257	1.411	29	874	1.720	26.161
%	78,3%	5,3%	0,0%	1,0%	5,4%	0,1%	3,3%	6,6%	100%
IS	4	0	-	0	0	0	-	-	4
NO	0	-	-	-	-	-	-	147	147
CH	0	17	-	-	21	-	0	205	243

Source: CARE (EU road accidents database) or national publications
Last update: May 2016

4.3.4 Weather conditions

Figure 28: Number of fatalities by weather conditions in the EU, 2014



Source: CARE (EU road accidents database) or national publications
Last update: May 2016

Table 52: Number of fatalities by weather conditions by country, 2014

	Dry	Fog or mist	Other	Rain	Snow, sleet, hail	Strong wind	Unknown	Total
BE	486	0	2	48	0	3	188	727
BG	784	13	-	87	17	0	-	901
CZ	574	21	12	67	12	2	-	688
DK	144	2	5	31	-	0	-	182
DE	-	22	50	-	0	2	3.303	3.377
EE	66	1	-	4	3	0	4	78
IE	142	2	1	40	0	2	1	188
EL	672	5	9	99	1	9	0	795
ES	1.490	24	0	139	4	21	11	1.688
FR	2.838	57	32	421	14	19	3	3.384
HR	265	4	0	39	0	-	-	308
IT	2.652	40	298	380	6	5	-	3.381
CY	43	0	0	2	0	-	-	45
LV	188	2	-	18	4	-	-	212
LT	220	9	-	25	9	1	3	267
LU	24	4	-	7	0	0	-	35
HU	555	17	0	46	3	5	-	626
MT	9	0	-	0	0	1	3	13
NL	359	5	-	29	2	0	81	476
AT	362	12	-	50	5	1	-	430
PL	2.042	60	593	447	34	26	0	3.202
PT	515	9	-	113	1	0	0	638
RO	1.521	41	-	225	19	12	-	1.818
SI	107	1	-	14	3	0	0	125
SK	-	-	-	0	0	-	321	321
FI	172	4	-	14	10	-	29	229
SE	199	11	-	17	13	-	30	270
UK	1.566	20	18	208	4	20	18	1.854
EU	17.995	386	1.020	2.570	164	129	3.995	26.258
%	68,5%	1,5%	3,9%	9,8%	0,6%	0,5%	15,2%	100,0%
IS	2	0	-	0	2	0	0	4
NO	91	0	28	18	4	-	6	147
CH	205	-	6	29	3	-	-	243

Source: CARE (EU road accidents database) or national publications
Last update: May 2016

5 Glossary

The CARE glossary provides short definitions for variables used in the Annual Statistical Report, and includes short definitions of CARE common values.

The glossary has two components:

- a) A **definition** of the common value
- b) The **availability** of the common value in the data file for each Member State.

ACCIDENT

ACCIDENT

Definition: Occurs on a public road. Occurs on a private road to which the public has right of access (except BE, NL, PT). Involves at least one moving vehicle (except UK, PT). Involves at least one injured or killed person. Is reported by the police. Self reporting possible (BE, UK, EL, IT, IE). Self reporting not possible (DK, FI, NL, AT, PT). Confirmed suicides excluded (BE, UK, IE, NL, AT, DK, PT). Confirmed suicides included (ES, IT, LU).

Note: The variation in the groups of road and the coverage of the injury categories included in injury accidents, together with differences in the level of self reported accidents, will lead to significant variations in the number of injury accidents reported, and their reporting rate, between Member States.

FATAL ACCIDENT

Definition: Accident with at least one killed person regardless the injury severity of any other involved persons.

Note: See “killed” definition from Injury Severity defined in Person type item (Death within 30 days of a road accident [UN/ECE Geneva 1995 – Statistics of Road Traffic Accidents in Europe and North America], except AT [3 days before 1992], ES [24 hours in CARE; 24 hours before 1993 in publication], FR [6 days], EL [24 hours], IT [7 days], PT [24 hours]. Suicide not included [except DK, ES, FR]. Natural death not included [except LU, SE]).

Data availability: All countries

TIME TYPE ITEMS

MONTH

Definition: Calendar month

Data availability: All countries (except DK)

HOURLY

Definition: Period of 60 minutes. Rounded down to whole hours (except EL, ES, IT: rounded to nearest hour).

Note: Winter time is:

- GMT from November to March (DE from 1996 onwards, GB, IE, NI, PT)
- GMT +1 hour from October to March (BE, AT, DK prior to 1996, DK, ES, FR, IT, LU, NL, SE)
- GMT +2 hours from October to March (EL, FI).

Summer time is one hour ahead of winter time:

- GMT +1 hour from April to October (DK from 1996 onwards, GB, IE, NI, PT)
- GMT +2 hours from April to September (AT, BE, DK prior to 1996, DK, ES, FR, IT, LU, NL, SE)
- GMT +3 hours from April to September (EL, FI)

For PT, unknown hour coded as '12' during daytime and '0' during night time

Data availability: All countries (except DK)

DAY OF WEEK

Definition: 24 hour day within 7 day week.

Note: Data calculated by the CARE system from the date of accident, where data is not available in national files (AT from 1992 onwards, BE, FR prior to 1993, PT, SE).

Data availability: All countries.

ROAD USER TYPE

DRIVER

Definition: Person driving or riding any motorised vehicle or pedal cycle. Person herding animals is not a driver (except BE, AT). Learner driver is a driver (except ES, PT). Learner driver is a driver during a driving test, but not in a driving lesson (DK). Driving instructor is not a driver (except ES, PT). Driving instructor is a driver during a driving lesson, but not during a driving test (DK).

Note: Uninjured drivers are included in the database (except GB, NI, NL: implicitly included in vehicle records only). Data on driving instructors and learner drivers collected separately from 1993 onwards (SE).

Data availability: All countries.

PASSENGER

Definition: Person on or in a vehicle, who is not the driver. Includes person in the act of boarding or alighting from a vehicle (except DK). Learner driver is not a passenger (except ES, PT). Learner driver is a passenger during a driving lesson, but not during a driving test (DK). Driving instructor is a passenger (except ES, PT). Driving instructor is a passenger during a driving test, but not in a driving lesson (DK).

Note: Uninjured passengers not included in the database (except FR, IE, LU; ES, FI in some cases, AT).

Data availability: All countries.

PEDESTRIAN

Definition: Person on foot. Person pushing or holding bicycle (except DK). Person pushing a pram or pushchair. Person leading or herding an animal (except DK, AT). Person riding a toy cycle on the footway (except AT). Person on roller skates, skateboard or skis (except AT). Does not include person in the act of boarding or alighting from a vehicle (except DK, ES).

Note: Uninjured pedestrians not included in the database (except BE, IE, LU, NL implicitly included in element records; DK, FR, FI, AT, SE if they caused the accident; ES not consistently).

Data availability: All countries.

TYPE OF INJURY

INJURED

Definition: Injured with application of correcting coefficient as stated for the 'Killed at 30 days'. Injured in a road accident. Hospitalisation or medical treatment not necessarily required (except FR). Self declaration of injury (DK if slight; FI, GB, IT, IE, NI). Opinion of the police. Aggregation of the following injury severities: SERIOUSLYINJUREDASREPORTED + SLIGHTLY INJURED + INJURED - 1 COEFFICIENT

Annual Accident Report 2016

Data availability: All countries

FATALITIES

Definition: Death within 30 days of a road accident (UN/ECE Geneva 1995 – Statistics of Road Traffic Accidents in Europe and North America, annex 1). Suicide not included (except DK, ES, FR). Natural death not included (except LU, SE). Corrective factors have been applied to comply with this international definition for the following countries: EL (24 hours), ES (24 hours in CARE; 24 hours before 1993 in publication), FR (6 days), IT (7 days), AT (3 days before 1992), PT (24 hours).

Data availability: All countries.

Member State	Correcting factors		
Greece	K(30) = K * 1.18 up to 1995		
Spain	K(30) = K * 1.3 up to 1992		
	1993 up to 1996:	Outside urban area	Inside urban area
	Driver	K(30)=K+SI*2.46%	K(30)=K+SI*1.02%
	Passenger	K(30)=K+SI*2.29%	K(30)=K+SI*0.94%
	Pedestrian	K(30)=K+SI*7.22%	K(30)=K+SI*3.87%
	1997 up to 2000:	Outside urban area	Inside urban area
	Driver	K(30)=K+SI*2.44%	K(30)=K+SI*1.93%
	Passenger	K(30)=K+SI*2.17%	K(30)=K+SI*1.80%
	Pedestrian	K(30)=K+SI*4.76%	K(30)=K+SI*5.71%
	2001 up to 2004:	Outside urban area	Inside urban area
	Driver	K(30)=K+SI*2.41%	K(30)=K+SI*2.17%
	Passenger	K(30)=K+SI*2.24%	K(30)=K+SI*2.15%
Pedestrian	K(30)=K+SI*6.17%	K(30)=K+SI*4.34%	
France	K(30) = K * 1.09 up to 1993 K(30) = K * 1.057 from 1994 onwards		
Italy	K(30) = K * 1.078		
Austria	K(30) = K * 1.12 only for 1991		
Portugal	K(30) = K * 1.3 up to 1997 K(30) = K * 1.14 from 1998 onwards		
K: number of persons killed, SI: number of persons seriously injured			

GENDER

FEMALE

Definition: Determined by the police (except ES, IT, LU, AT, PT: on the basis of identity documents; DK, FI, SE: on the basis of personal ID number).

Data availability: All countries.

MALE

Definition: Determined by the police (except ES, IT, LU, AT, PT: on the basis of identity documents; DK, FI, SE: on the basis of personal ID number).

Data availability: All countries.

AGE

AGE

Definition: Length of life of person. Rounded down to whole number of years (except EL, IT, NI: rounded to nearest year).

Note: Age 0 to 1 is exceptionally rounded up (FR, IT, IE, LU, NI, PT). Age over 99 only available for ES, FR (1993 on), NL.

Data availability: All countries.

AREA TYPE

INSIDE URBAN AREA

Definition: Area inside urban area boundary signs (except IE, UK). Includes dual carriageways and national roads. Can include motorways (except DK, EL, IT). Opinion of the police (DK, SE).

Note: Data approximated from speed limit of 40 mph or less (IE, UK).

Data availability: All countries.

OUTSIDE URBAN AREA

Definition: Area outside urban area boundary signs. Opinion of the police (DK, SE). Includes motorways.

Note: Data approximated from speed limit of over 40 mph (IE, UK).

Data availability: All countries.

MOTORWAY

Definition: Public road with dual carriageways, and at least two lanes each way. Entrance and exit signposted. Road with grade separated interchanges. Road with a central barrier or central reservation. No crossing permitted. No stopping permitted unless in an emergency. Entry prohibited for pedestrians, animals, pedal cycles, mopeds, agricultural vehicles; learner drivers (BE, GB, EL, IE, NI, PT). Access restricted to motor vehicles (DK, FI, AT). Minimum speed between 50 km/h and 80 km/h (except FR, UK). Maximum speed between 100 km/h and 130 km/h (except DK recommended 130 km/h).

Data availability: All countries.

MODES OF TRANSPORT-VEHICLE GROUP

AGRICULTURAL TRACTOR

Definition: Motor vehicle for agricultural use, with wheels or caterpillar tracks, with at least two axles. Driving licence required (DK, EL, ES, FI, GB, IT, IE, LU, AT; not in FR). Maximum speed 30 km/h or 40 km/h.

Data availability: All countries (except DK prior to 1997, AT, FR, GB, IE from 1996 onwards, LU).

Value included in another value:

agricultural machine (FR), construction or agricultural machine (DK, AT prior to 1997), agricultural or industrial tractor (LU), other motor vehicle (GB), other (IE from 1996 onwards).

BUS OR COACH

Definition:

Motor vehicle with at least four wheels, used for transporting people. Public or private use. Type D driving licence required (BE, GB, IE, NI). Includes bus, more than 8 and 16 seats, minibus, trolley-bus (except LU), scheduled bus, unscheduled bus, school bus.

Data availability:

All countries.

CAR OR TAXI

Definition:

Includes car, taxi. Motor vehicle with four wheels. Used to transport only or mainly people. Seating for no more than 8 passengers. Type B driving licence required. Includes taxi-bus (NL).

Data availability:

All countries.

HEAVY GOODS VEHICLE

Definition:

Includes road tractor, road tractor with semi trailer, lorry over 3,5 tonnes. Motor vehicle with at least four wheels, with a permissible gross vehicle weight of over 3.5 tonnes, used only for the transport of goods. With or without a trailer. Type C driving licence required. Includes lorry, over 3.5 tonnes ; road tractor ; road tractor with semi-trailer ; lorry with trailer ; tanker (except FI).

Note:

Lorries cannot systematically be categorised as over 3.5 tonnes (DK, IT).

Data availability:

All countries (except DE, IT).

LORRY, LESS THAN 3,5 TONNES

Definition:

Motor vehicle with a permissible gross vehicle weight of less than 3.5 tonnes, used only for the transport of goods. Type B driving licence required.

Note:

Lorries cannot systematically be categorised as less than 3.5 tonnes (DK, IT).

Data availability:

All countries (except DK, IT, LU).

MOPED

Definition:

Motor vehicle with two wheels, with an engine size of less than 50 cc. Design speed between 25 km/h and 50 km/h. One or two seats. Minimum age for driver between 14 and 18 (except IT). No driving licence required (ES, FR, FI, GB, IT, PT, SE). Unregistered vehicle (BE, DK, ES, FR, SE).

Data availability:

All countries (except IE from 1996 onwards).

Value included in another value:

Two wheeled motor vehicle (IE from 1996 onwards).

MOTORCYCLE

Definition:

Motor vehicle with two or three wheels (not three wheeled in DK), with an engine size of more than 50 cc. With a trailer possible (except DK). With a sidecar possible. Registered vehicle (except PT). Type A driving licence required. Includes motor scooter (except FR).

Data availability:

All countries (except IE from 1996 onwards).

Value included in another value: two wheeled motor vehicle (IE from 1996 onwards).

OTHER VEHICLE

Definition: Includes other non-motor vehicle, other motor vehicle.

PEDAL CYCLE

Definition: Vehicle with at least two wheels, without engine, moved by pedals or hand cranks. With or without a trailer. With or without passengers. Ridden in the carriageway. Ridden on the pavement (except DK, LU).

Data availability: All countries.

PEDESTRIAN

Definition: Wherever a person's person class has been identified as being pedestrian, its vehicle type is "pedestrian". This as opposed to older version of CARE where a pedestrian didn't have a vehicle type.

Data availability: All countries.

JUNCTION TYPE

JUNCTION

Definition: Road intersection with three or more arms. Not grade separated. Includes t junction, y junction, crossroad, level crossing (except DK, FI, GB, NI), roundabout (except FR), multiple junction.

Data availability: All countries (except EL).

CROSSROAD

Definition: Road intersection with four arms. Opinion of the police (DK, ES, FI; not AT).

Data availability: All countries (except BE, EL).

NOT AT A JUNCTION

Definition: Position on road more than 20m from a junction or roundabout (GB, IE, NI, NL, AT). Position on road more than 50m from a junction (FR). Opinion of the police (BE, DK, ES, FI, IT, LU, SE).

Data availability: All countries (except EL).

ROUNDABOUT

Definition: Circular highway. Includes sections of the road leading into it, within 20m (GB, IE, NI, AT). Opinion of the police (DK, ES, FR, IT).

Data availability: All countries (except BE, DK, EL, FI, LU, PT).

T OR Y JUNCTION

Definition: Road intersection with three arms. Includes t junction, y junction, staggered junction.

Data availability: All countries (except BE, EL, FI, IT, PT).

6 List of tables

Table 1:	Annual number of injury accidents by country, 2005-2014	7
Table 2:	Annual number of fatalities by country, 2005-2014	10
Table 3:	Annual number of fatal accidents by country, 2005-2014	13
Table 4:	Annual number of pedestrian fatalities by country, 2005-2014	17
Table 5:	Annual number of pedal cyclist rider and passenger fatalities by country, 2005-2014	18
Table 6:	Annual number of moped rider and passenger fatalities by country, 2005-2014	19
Table 7:	Annual number of motorcycle rider and passenger fatalities by country, 2005-2014	20
Table 8:	Annual number of car and taxi driver and passenger fatalities by country, 2005-2014	22
Table 9:	Annual number of heavy goods vehicles >3,5t fatalities by country, 2005-2014	23
Table 10:	Annual number of lorries <3,5t fatalities by country, 2005-2014	24
Table 11:	Annual number of buses or coaches fatalities by country, 2005-2014	25
Table 12:	Annual number of fatalities by age group by country, 2005-2006	28
Table 13:	Annual number of fatalities by age group by country, 2007-2008	29
Table 14:	Annual number of fatalities by age group by country, 2009-2010	30
Table 15:	Annual number of fatalities by age group by country, 2011-2012	31
Table 16:	Annual number of fatalities by age group by country, 2013-2014	32
Table 17:	Annual number of female fatalities by country, 2005-2014	33
Table 18:	Annual number of male fatalities by country, 2005-2014	34
Table 19:	Annual number of female fatalities as drivers by country, 2005-2014	36
Table 20:	Annual number of male fatalities as drivers by country, 2005-2014	37
Table 21:	Annual number of female fatalities as passengers by country, 2005-2014	38
Table 22:	Annual number of male fatalities as passengers by country, 2005-2014	39
Table 23:	Annual number of female fatalities as pedestrians by country, 2005-2014	40
Table 24:	Annual number of male fatalities as pedestrians by country, 2005-2014	41
Table 25:	Number of total fatalities by age group by country, 2014	42
Table 26:	Number of female fatalities by age group by country, 2014	43
Table 27:	Number of male fatalities by age group by country, 2014	44
Table 28:	Number of pedestrian fatalities by age group by country, 2014	45
Table 29:	Number of pedal cyclist fatalities by age group by country, 2014	46
Table 30:	Number of moped rider and passenger fatalities by age group by country, 2014	47
Table 31:	Number of motorcycle rider and passenger fatalities by age group by country, 2014	48
Table 32:	Number of car driver and passenger fatalities by age group by country, 2014	49
Table 33:	Number of fatalities by mode of transport and type of area by country (part 1), 2014	51
Table 34:	Number of fatalities by mode of transport and type of area by country (part 2), 2014	52
Table 35:	Number of fatalities by month by country (January to June), 2014	55
Table 36:	Number of fatalities by month by country (July to December), 2014	56
Table 37:	Number of driver fatalities by month by country (January to June), 2014	57
Table 38:	Number of driver fatalities by month by country (July to December), 2014	58
Table 39:	Number of passenger fatalities by month by country (January to June), 2014	59
Table 40:	Number of passenger fatalities by month by country (July to December), 2014	60
Table 41:	Number of pedestrian fatalities by month by country (January to June), 2014	61
Table 42:	Number of pedestrian fatalities by month by country (July to December), 2014	62
Table 43:	Total number of fatalities by day of week by country, 2014	64
Table 44:	Number of fatalities by day of week by country, 2014 (drivers)	65
Table 45:	Number of fatalities by day of week by country, 2014 (passengers)	66
Table 46:	Number of fatalities by day of week by country, 2014 (pedestrians)	67
Table 47:	Number of fatalities by hour of day (00-08) by country, 2014	68
Table 48:	Number of fatalities by hour of day (09-16) by country, 2014	69
Table 49:	Number of fatalities by hour of day (17-24) by country, 2014	70
Table 50:	Number of fatalities by type of area and road by country, 2014	74
Table 51:	Number of fatalities by type of junction by country, 2014	75
Table 52:	Number of fatalities by weather conditions by country, 2014	77

7 List of figures

Figure 1:	Annual number of fatalities, injury accidents and injured people in the EU, 2005-2014	5
Figure 2:	Fatalities per million inhabitants in the EU, 2014 compared to 2005	6
Figure 3:	Percentage change in number of fatalities and injury accidents by country, 2014 and 2005	6
Figure 4:	Annual number of injury accidents by country (part 1), 2005-2014	8
Figure 5:	Annual number of injury accidents by country (part 2), 2005-2014	8
Figure 6:	Annual number of injury accidents by country (part 3), 2005-2014	9
Figure 7:	Annual number of injury accidents by country (part 4), 2005-2014	9
Figure 8:	Annual number of fatalities by country (part 1), 2005-2014	11
Figure 9:	Annual number of fatalities by country (part 2), 2005-2014	11
Figure 10:	Annual number of fatalities by country (part 3), 2005-2014	12
Figure 11:	Annual number of fatalities by country (part 4), 2005-2014	12
Figure 12:	Share of fatalities by area type in the EU, 2014	14
Figure 13:	Distribution of male and female fatalities by road user type in the EU, 2014	14
Figure 14:	Distribution of fatalities by mode of transport in the EU, 2014	15
Figure 15:	Percentage change in number of fatalities by mode of transport in the EU, 2014 and 2005	16
Figure 16:	Annual number of fatalities by mode of transport (drivers and passengers, vulnerable modes) in the EU, 2005-2014	21
Figure 17:	Annual number of drivers and passengers fatalities by mode of transport in the EU, 2005-2014	26
Figure 18:	Increase/decrease of number of fatalities by gender in the EU, 2014 and 2005	27
Figure 19:	Annual distribution of fatalities by gender in the EU, 2005-2014	35
Figure 20:	Fatalities by type of area and mode of transport in the EU, 2014	50
Figure 21:	Number of fatalities by month in the EU, 2014	53
Figure 22:	Number of fatalities by month and road user type in the EU, 2014	54
Figure 23:	Total number of fatalities by day of week and road user type in the EU, 2014	63
Figure 24:	Number of fatalities by hour of day in the EU, 2014	71
Figure 25:	Distribution of fatalities by hour of day and road user type in the EU, 2014	71
Figure 26:	Distribution of fatalities by hour of day and mode of transport in the EU, 2014	72
Figure 27:	Number of fatalities by type of area by country, 2014	73
Figure 28:	Number of fatalities by weather conditions in the EU, 2014	76

