



Annual Statistical Report 2011

Based on data from CARE / EC from 2000 to 2009

DaCoTA

Building the European Road Safety Observatory

Workpackage 3

Deliverable No: D 3.5



Authors:

KfV (Austria)
NTUA (Greece)
SWOV (The Netherlands)
TRL (United Kingdom)
INTRAS-UVEG (Spain)
IFSTTAR (France)

Workpackage Leader:

NTUA (Greece)

Task Leader:

KfV (Austria)

Contract Number: TREN/FP7TR/
233659/"DaCoTA"

Acronym: DaCoTA

Version: No1

Date of issue: 31/03/2011



CONTENTS

1	Introduction	3
1.1	The CARE Database	3
1.2	Note to the Reader	4
2	Overview – major issues	7
2.1	EU – Developments (includes databases other than CARE)	7
2.2	Interesting Details	8
3	Time Series – last 10 years	10
3.1	General time series	10
3.2	Time series related to mode of transport	18
3.3	Time series related to person age and gender	29
4	Fatalities 2009	44
4.1	People involved	44
4.1.1	Age and gender of persons	44
4.2	Modes of transport	47
4.2.1	Mode of transport by age of persons	47
4.2.2	Mode of transport by type of area	52
4.3	Accident characteristics	55
4.3.1	Various periods of time (month, day of week, hour of day)	55
4.3.2	Type of area/road	74
4.3.3	Type of junction	76
4.3.4	Weather conditions	77
5	Glossary	79
6	List of tables	85
7	List of figures	86

1 Introduction

1.1 The CARE Database

Community database on **A**ccidents on the **R**oads in **E**urope

Road traffic accidents in the Member States of the European Union annually claim about 34.000 lives and leave more than 1.1 million people injured, representing estimated costs of 140 billion Euros. Since 1984, a large number of measures to reduce road accidents have been taken at a regional level. Along with these measures, the Council adopted a Decision on 30 November 1993 on the creation of a Community database on road accidents (93/704/EC)¹, the CARE project.

It was commonly agreed that such a database at the Community level would make it possible to identify and quantify road safety problems, evaluate the efficiency of road safety measures, determine the relevance of Community actions and facilitate the exchange of experience in this field. After a pilot phase of about 3 years, the Council endorsed the "Report from the Commission on the progress with the project and its future prospects" (COM(97) 238 final).

CARE is a Community database on road accidents resulting in death or injury (no statistics on damage-only accidents are kept). The major difference between CARE and most other existing international databases is the high level of disaggregation, i.e. CARE is based on detailed data of individual accidents as collected by the Member States and in Switzerland and Iceland. This structure allows for maximum flexibility and potential with regard to analysing the information contained in the system and opens up a whole set of new possibilities in the field of accident analysis.

National data sets are integrated into the CARE database in their original national structure and definitions, with confidential data blanked out. However, transformation rules are implemented in the CARE database in order to increase data compatibility and thus enhance the functioning of the system.

The process of improving "homogenisation" of accident data within CARE is underway. In the meantime, the inherent incompatibility of national accident data remains a source of possible misinterpretation when performing comparative analyses at international level. Therefore, on-line access to the CARE database is currently restricted to expert users. The summary statistical tables and figures contained here provide an overview of road accident data from 2000 to 2009. For some figures other sources than CARE has been used in order to give an overview of EU-25 road accident data.

¹ OJ No 329, 30.12.1993, p. 63.

1.2 Note to the Reader

This Annual Statistical Report provides the basic characteristics of road accidents in 25 member states of the European Union for the period 2000-2009, on the basis of data collected and processed in the CARE database, the Community Road Accident Database with disaggregate data (Council Decision EEC 93/704 final).

The period 2000-2009 has been used in order to maximize the sample of data. However, data for some countries and corresponding years were not yet available in the CARE database at the date of drafting this report.

The next table shows which data from the EU-27 and Switzerland and Iceland are available in the CARE database (x) and are used in this report. x

Code	Country	1991-1999	2000	2001	2002	2003	2004	2005	2006	2007	2008	2009
BE	Belgium	X	X	X	X	X	X	X	X	X	X	X
BG	Bulgaria											
CZ	Czech Republic	X	X	X	X	X	X	X	X	X	X	X
DK	Denmark	X	X	X	X	X	X	X	X	X	X	X
DE	Germany		X	X	X	X	X	X	X	X	X	X
EE	Estonia							X	X	X	X	X
IE	Ireland	X	X	X	X	X	X	X	X	X	X	-
EL	Greece	X	X	X	X	X	X	X	X	X	X	X
ES	Spain	X	X	X	X	X	X	X	X	X	X	X
FR	France	X	X	X	X	X	X	X	X	X	X	X
IT	Italy	X	X	X	X	X	X	X	X	X	X	X
CY	Cyprus						X					
LV	Latvia						X	X	X	X	X	X
LT	Lithuania											
LU	Luxembourg		X	X	X	X	X	X	X	X	X	X
HU	Hungary					X	X	X	X	X	X	X
MT	Malta	X						X	X	X	X	X
NL	Netherlands		X	X	X	X	X	X	X	X	X	X
AT	Austria	X	X	X	X	X	X	X	X	X	X	X
PL	Poland			X	X	X	X	X	X	X	X	X
PT	Portugal	X	X	X	X	X	X	X	X	X	X	X
RO	Romania		X	X	X	X	X	X	X	X	X	X
SI	Slovenia		X	X	X	X	X	X	X	X	X	X
SK	Slovakia							X	X	X	X	X
FI	Finland	X	X	X	X	X	X	X	X	X	X	X
SE	Sweden	X	X	X	X	X	X	X	X	X	X	-
UK	United Kingdom	X	X	X	X	X	X	X	X	X	X	X
CH	Switzerland						X				X	
IS	Iceland				X	X	X	X	X	X	X	X

As seen in the table before, there are missing values in the CARE database. Data are entirely missing for some countries for some years, while certain variables may be missing even when the data are present. Most tables and figures are based on an EU-24 standard. These contain all 22 countries with actual Data available for 2009 plus Ireland and Sweden with data from 2008. The notes in the tables state only deviations from this standard.

The reader should be aware of the following remarks concerning the contents of this Annual Statistical Report:

- It should be taken into account that analysis and comparisons of the numbers of accidents and injuries are not always possible, as different definitions exist in each EU Member State.
- Fatality data are compatible between countries and use common definitions as a result of the CAREPLUS 1 and CAREPLUS 2² project. Corrective factors have been applied to comply with the international definition of people killed within 30 days after an accident. (http://ec.europa.eu/transport/roadsafety/road_safety_observatory/doc/care_glossary.pdf).
- On fatal accidents data, no corrective factors have been applied to comply with the international definition of persons killed within 30 days.
- Minor differences in totals are due to rounding-off differences of data.
- “Unknown” values are not displayed in tables, but totals include the unknowns.
- The EU totals for all people killed are not necessarily the sum of each sub-division of these persons, given that there are no data available for all sub-divisions and all countries. Corresponding percentages refer to the available data.
- Partial or complete reproduction of these statistics is permitted if the source is mentioned and accompanied with the present remarks.
- The basic characteristics of fatal road accidents in the EU member states have been selected as those which might be useful for road accident analysis and where data are available for all or most of the EU countries (these are results of CAREPLUS project on making accident data comparable). More characteristics are available since the CAREPLUS 2 project. More precisely, the basic characteristics of fatal road accidents refer to:

Person class (driver, passenger, pedestrian)

Person killed (age groups and/or gender)

Area type (inside or outside urban area)

Motorway (yes or no)

Junction type (crossroad, level crossing, not at a junction, roundabout, T or Y junction)

Weather conditions (dry, fog or mist, rain, snow/sleet/hail, strong wind)

Modes of transport – vehicle group (agricultural tractor, bus or coach [>8 seats], car or taxi, heavy goods vehicles, lorry under 3,5 tons, pedal cycle, moped, motorcycle, other)

Month (January to December)

Day of the week (Monday to Sunday)

Hour (0-24)

² Cete-Sud Ouest (1997), A proposal for improving the comparability of road accidents within EU Member States using the CARE Database, CAREPLUS 1 Consortium, Bordeaux.

Cete-Sud Ouest (2000), A proposal for improving the comparability of road accidents within EU Member States using the CARE Database, CAREPLUS 2 Consortium, Bordeaux

Disclaimer

The information in this document is provided as it is and no guarantee or warranty is given that the information is fit for any particular purpose. Therefore, the reader uses the information at their own risk and liability.

For more information

Further statistical information about fatalities is available from the CARE database at the Directorate General for Energy and Transport of the European Commission, 28 Rue de Mot, B -1040 Brussels.

Traffic Safety Basic Fact Sheets available from the European Commission concern:

- Main Figures
- Children (Aged <15)
- Youngsters (Aged 15-17)
- Young People (Aged 18-24)
- The Elderly (Aged >64)
- Pedestrians
- Bicycles
- Motorcycles and Mopeds
- Car occupants
- Heavy Goods Vehicles
- Motorways
- Junctions
- Roads in urban areas
- Roads outside urban areas
- Seasonality
- Single vehicle accidents
- Gender

Detailed data on traffic accidents are published annually by the European Commission in the Annual Statistical Report. This includes a glossary of definitions on all variables used (www.erso.eu).

More information on the DaCoTA Project, co-financed by the European Commission, Directorate-General for Mobility and Transport is available at the DaCoTA Website: <http://www.dacota-project.eu/index.html>.

Authors:

Christian Brandstaetter	KFV, Austria
George Yannis, Petros Evgenikos, Efi Argyropoulou, Panagiotis Papantoniou	NTUA, Greece
Jeremy Broughton, Jackie Knowles	TRL, UK
Martine Reurings, Martijn Vis	SWOV, The Netherlands
Jean-François Pace, Elena López-de-Cozar, Carlos Martínez-Pérez and Jaime Sanmartín	INTRAS-UVEG, Spain
Mouloud Haddak	IFSTTAR, France

2 Overview – major issues

2.1 EU – Developments (includes databases other than CARE)

Figure 1: Annual number of fatalities, injury accidents and injured people (EU-27), 2000-2009

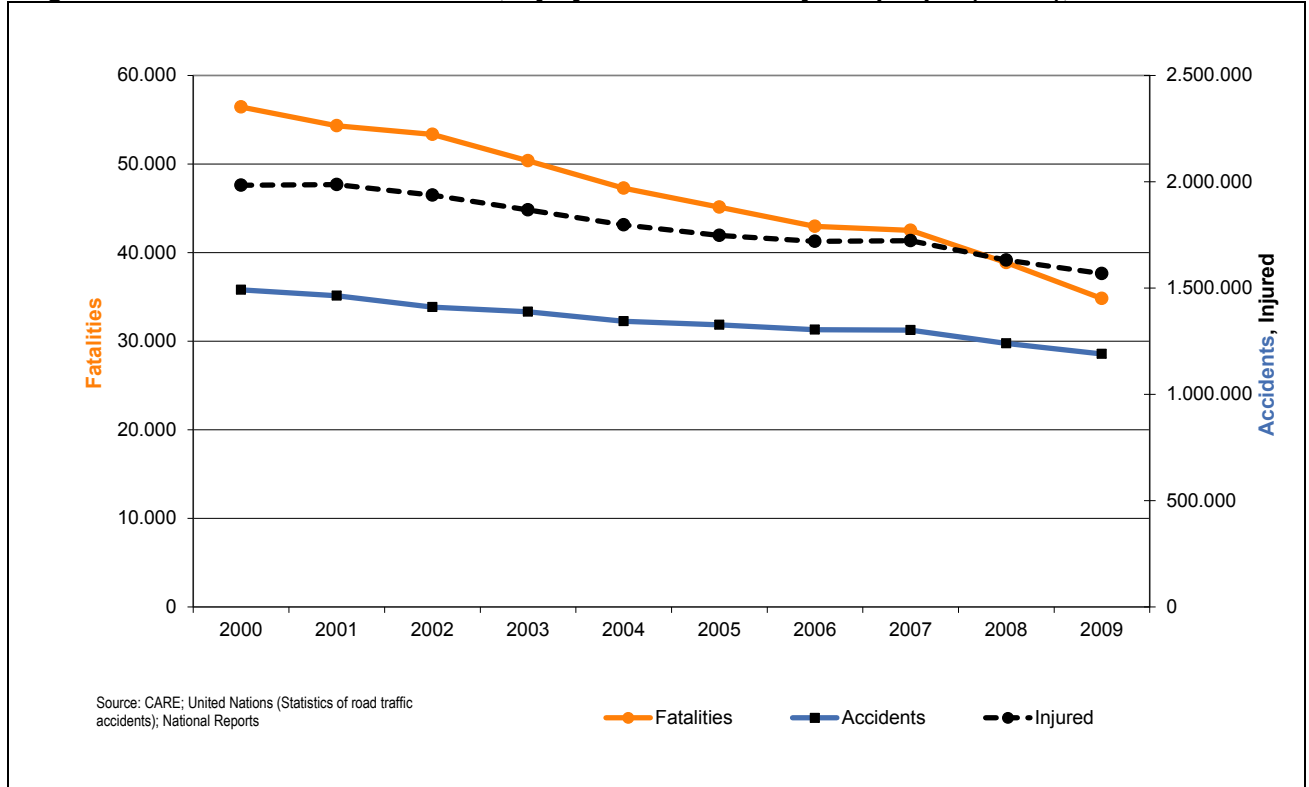
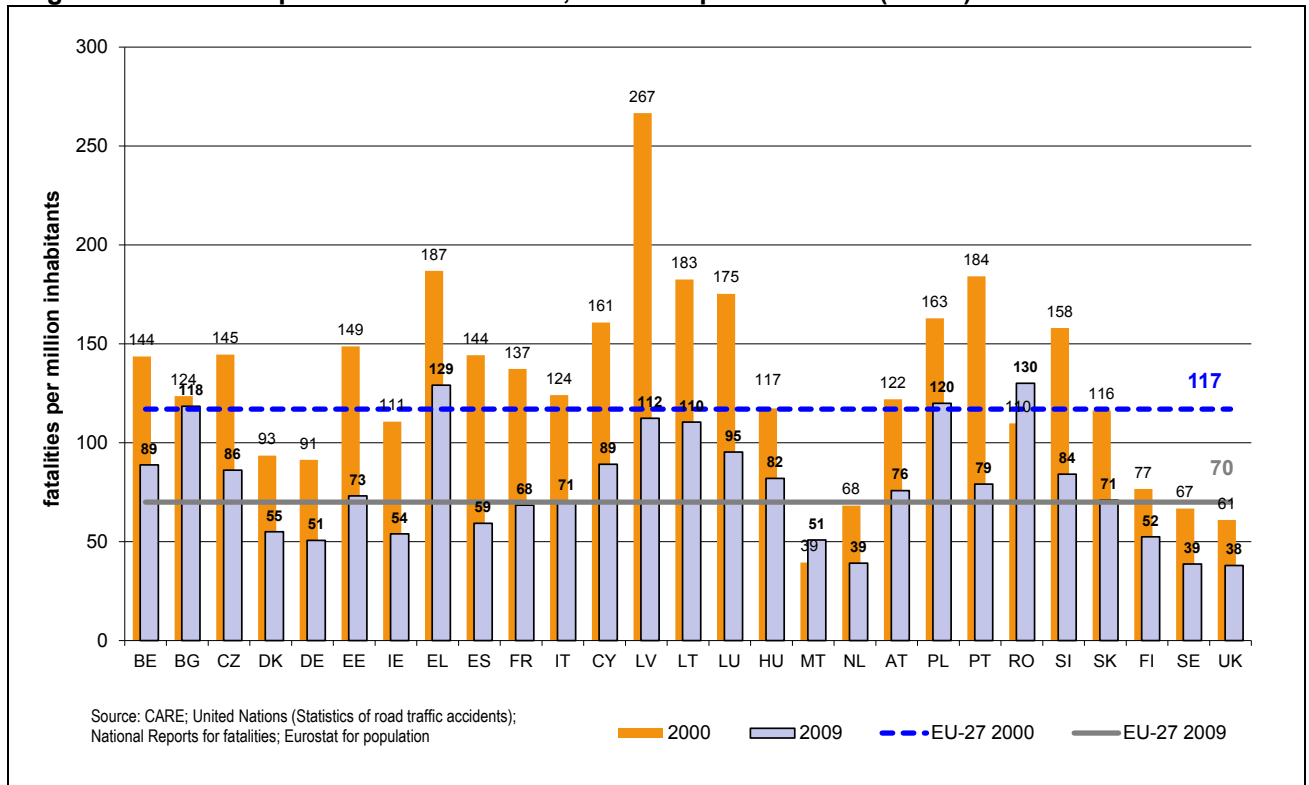


Figure 2: Fatalities per million inhabitants, 2009 compared to 2000 (EU-27)



2.2 Interesting Details

Figure 3: Share of fatalities by area type in EU-21, 2009

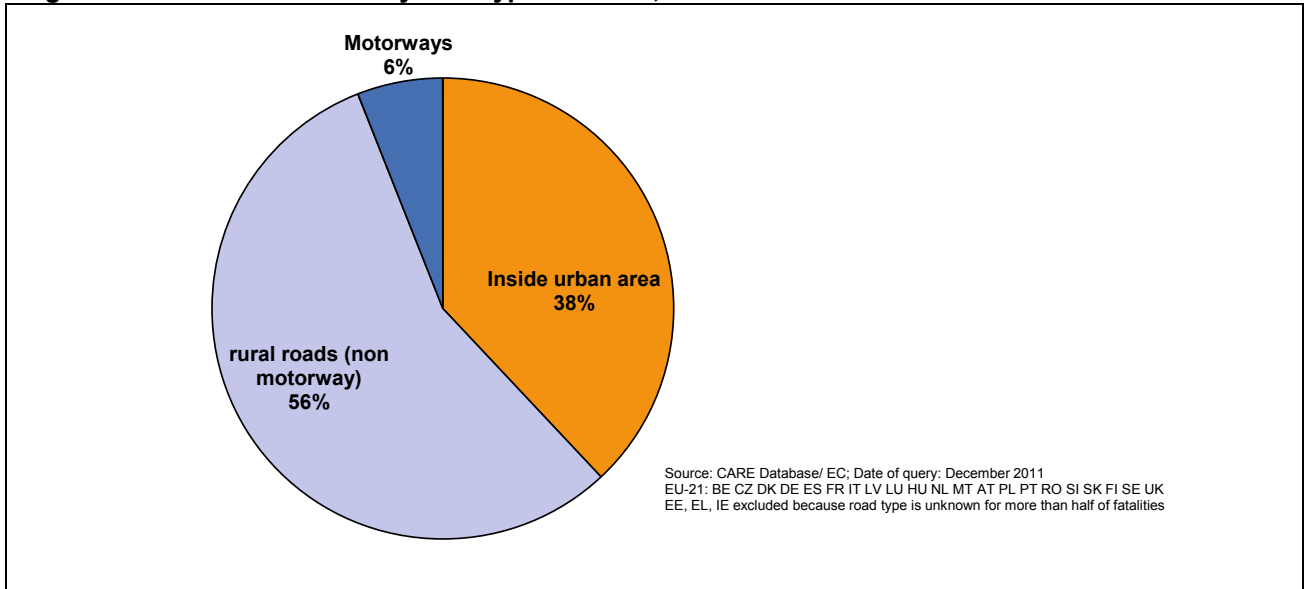


Figure 4: Distribution of male and female fatalities by person class in EU-24, 2009

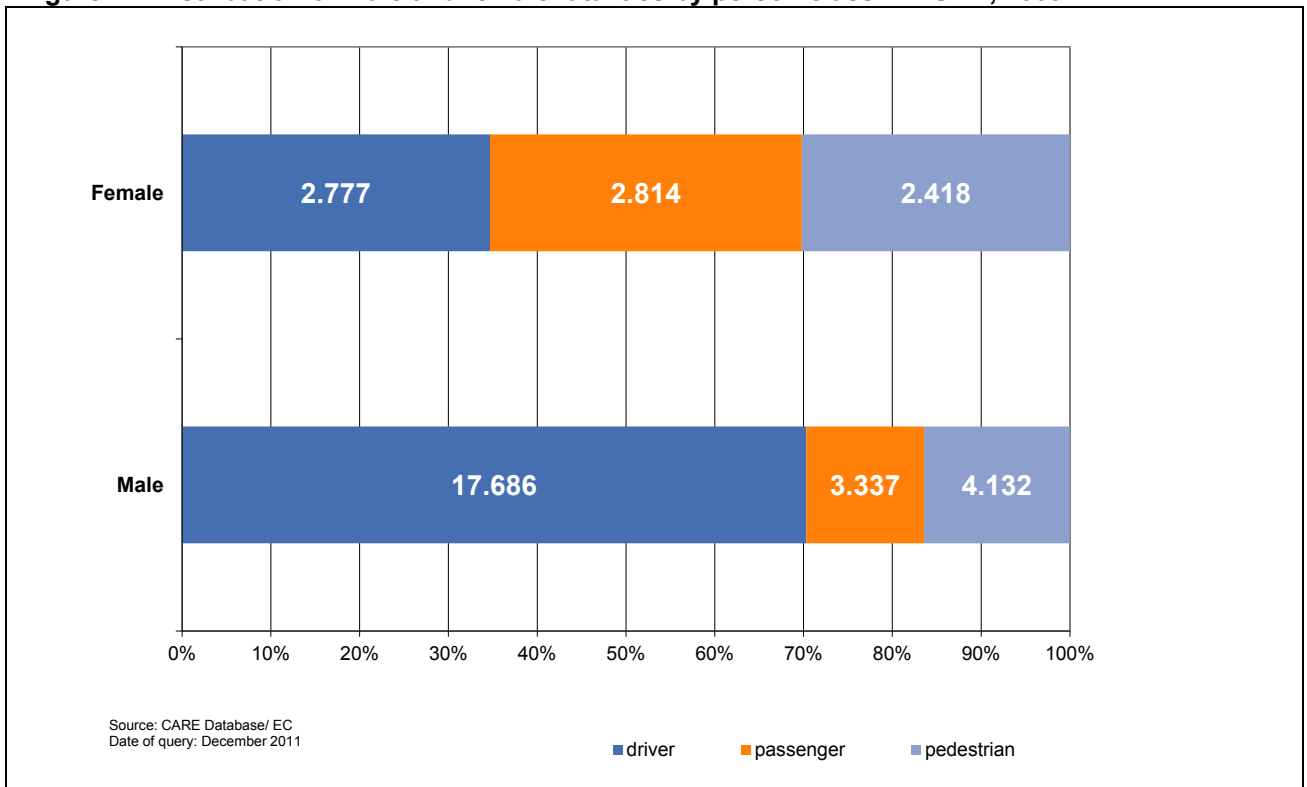
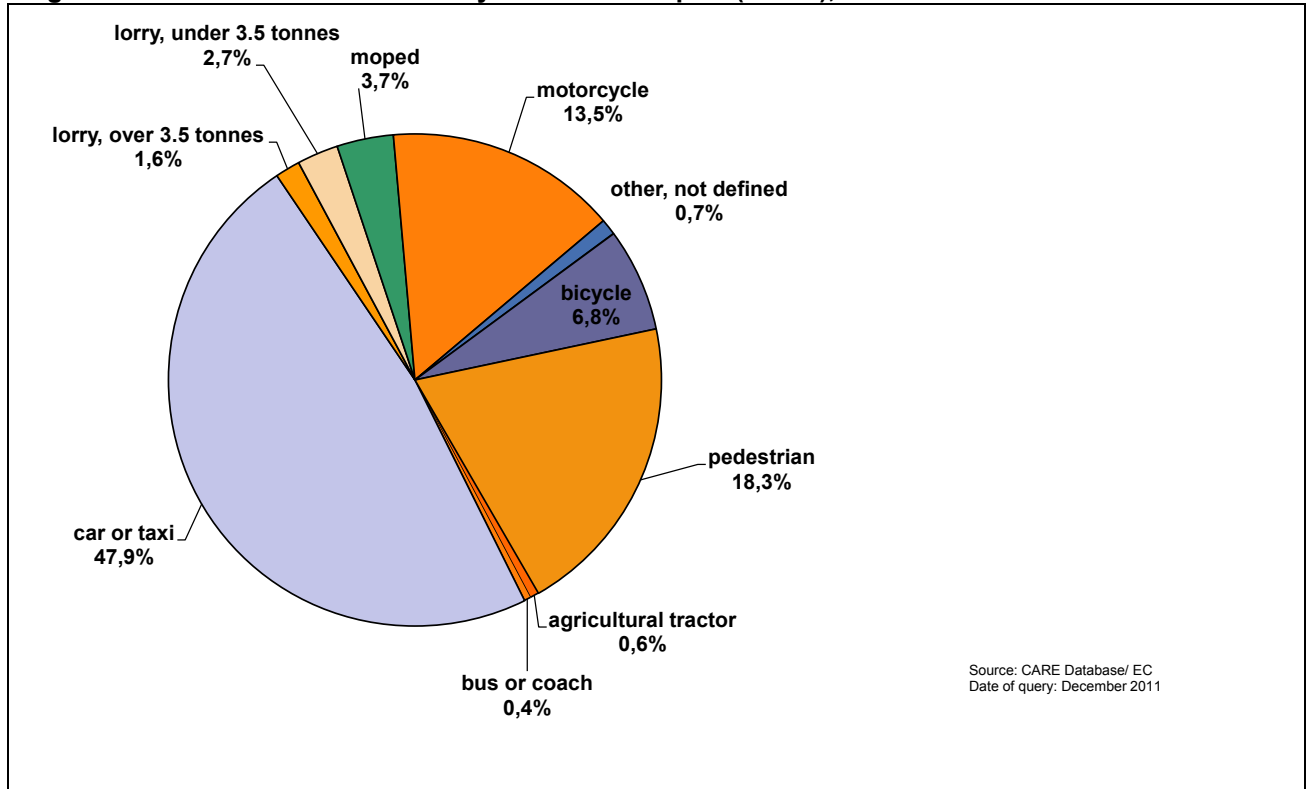


Figure 5: Distribution of fatalities by mode of transport (EU-24), 2009



3 Time Series – last 10 years

3.1 General time series

Figure 6: Percentage change in number of fatalities and injury accidents by country (2009 compared to 2000)

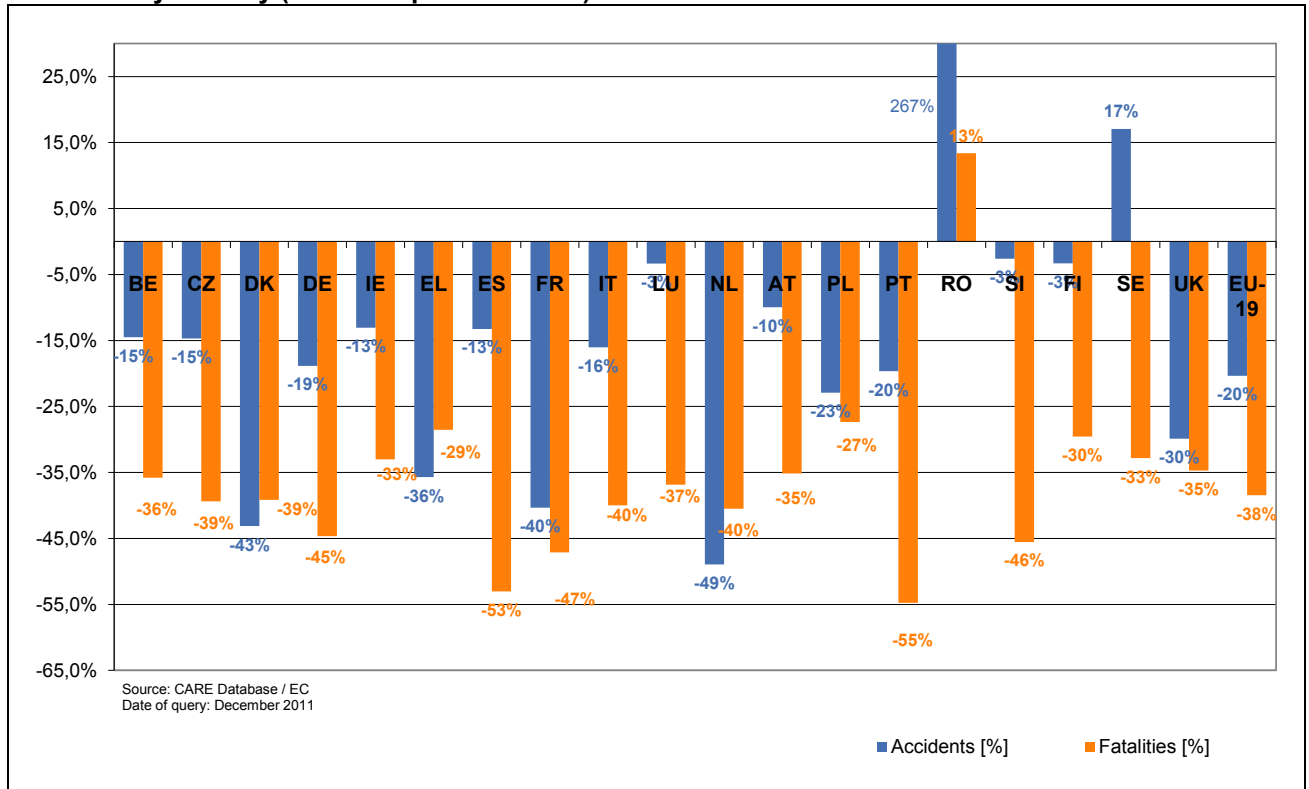


Table 1: Annual number of injury accidents by country, 2000-2009

	2000	2001	2002	2003	2004	2005	2006	2007	2008	2009
BE	49.065	47.444	43.693	43.853	43.565	40.366	41.114	43.239	42.115	41.944
CZ	25.445	26.026	26.585	27.320	26.516	25.239	22.115	23.060	22.481	21.706
DK	7.340	6.856	7.122	6.748	6.207	5.412	5.403	5.549	5.020	4.174
DE	382.949	375.345	362.054	354.534	339.308	336.618	327.984	335.845	320.614	310.806
IE	7.749	6.909	6.625	5.984	5.780	6.533	6.018	5.467	6.736	
EL	23.001	19.671	16.809	15.751	15.547	16.914	16.019	15.499	15.083	14.789
ES	101.729	100.393	98.433	99.987	94.009	91.187	99.797	100.508	93.161	88.251
FR	121.223	116.745	105.470	90.220	85.390	84.525	80.309	81.272	74.487	72.315
IT	256.546	263.100	265.402	252.271	243.490	240.011	238.124	230.871	218.963	215.403
LU	899	772	769	720	716	777	805	954	927	869
NL	37.946	35.313	33.538	31.635	27.758	27.007	24.527	25.819	23.708	19.378
AT	42.126	43.073	43.175	43.423	42.657	40.896	39.884	41.096	39.173	37.925
PL	57.330	53.798	53.558	51.076	51.068	48.100	46.875	49.536	49.054	44.195
PT	44.159	42.521	42.219	41.495	38.930	37.066	35.680	35.311	33.613	35.484
RO	7.889	7.528	7.453	6.942	7.336	19.820	21.904	24.662	29.861	28.612
SI	8.951	9.595	10.541	11.910	12.890	10.509	11.620	11.640	9.165	8.717
FI	6.633	6.451	6.196	6.907	6.767	7.020	6.740	6.657	6.881	6.414
SE	15.770	15.796	16.947	18.365	18.029	18.094	18.213	18.548	18.462	
UK	242.117	236.461	228.535	220.079	213.043	203.682	194.789	188.105	176.814	169.805
EU-19	1.438.867	1.413.797	1.375.124	1.329.220	1.279.006	1.259.776	1.237.920	1.243.638	1.186.318	1.145.985
Yearly Change		-1,7	-2,7	-3,3	-3,8	-1,5	-1,7	0,5	-4,7	-3,4
EE						2.341	2.585	2.449	1.868	1.506
CY					110					
LV							4.301	4.780	4.196	3.160
HU				19.976	20.957	20.777	20.977	20.634	19.174	17.863
MT						847	894	942	764	636
SK						7.908	7.991	8.488	8.416	6.517
EU-25	1.438.867	1.413.797	1.375.124	1.349.196	1.300.072	1.291.648	1.274.669	1.280.930	1.220.182	1.175.667
CH	-	-	-	-	-	30.793	-	-	20.736	20.506
IS	-	-	1.007	807	810	687	915	1.147	1.083	893

Figure 7: Annual number of injury accidents by country (BE – ES), 2000-2009

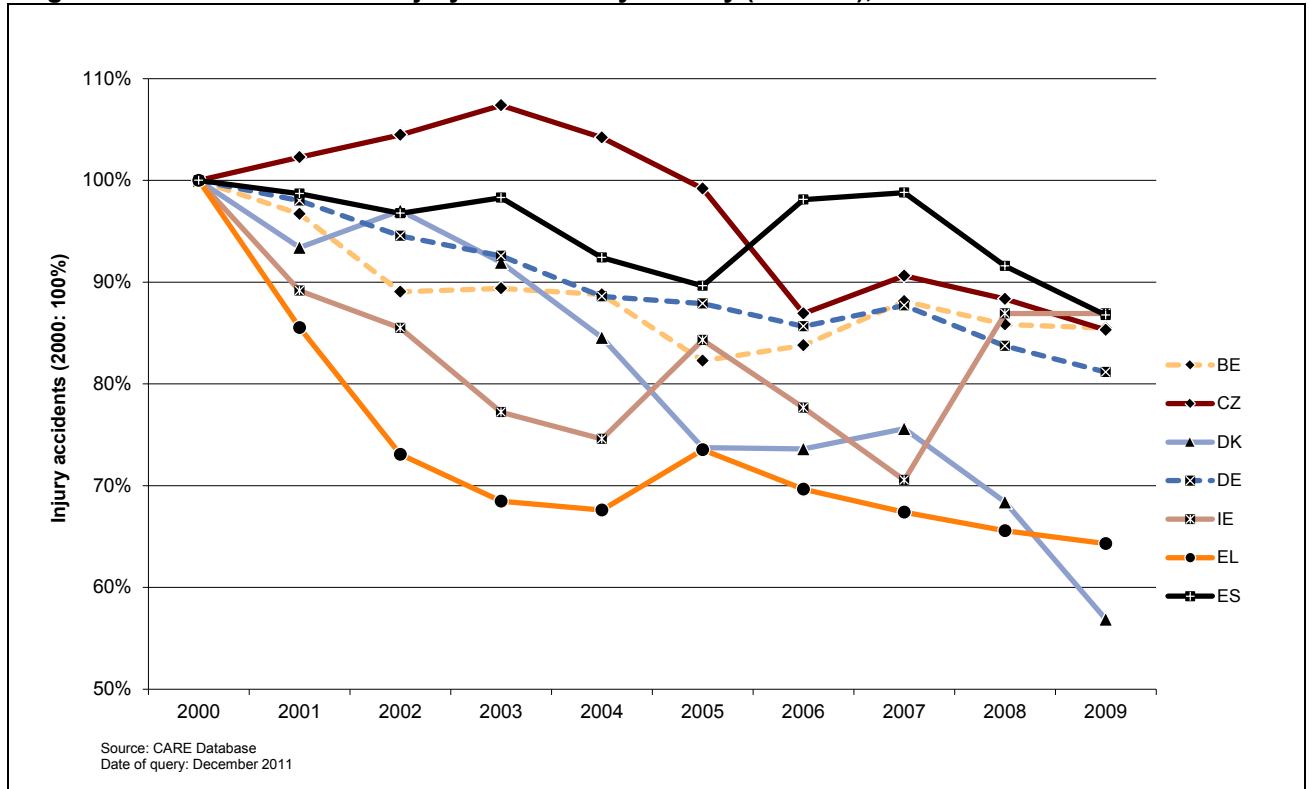


Figure 8: Annual number of injury accidents by country (FR-PL), 2000-2009

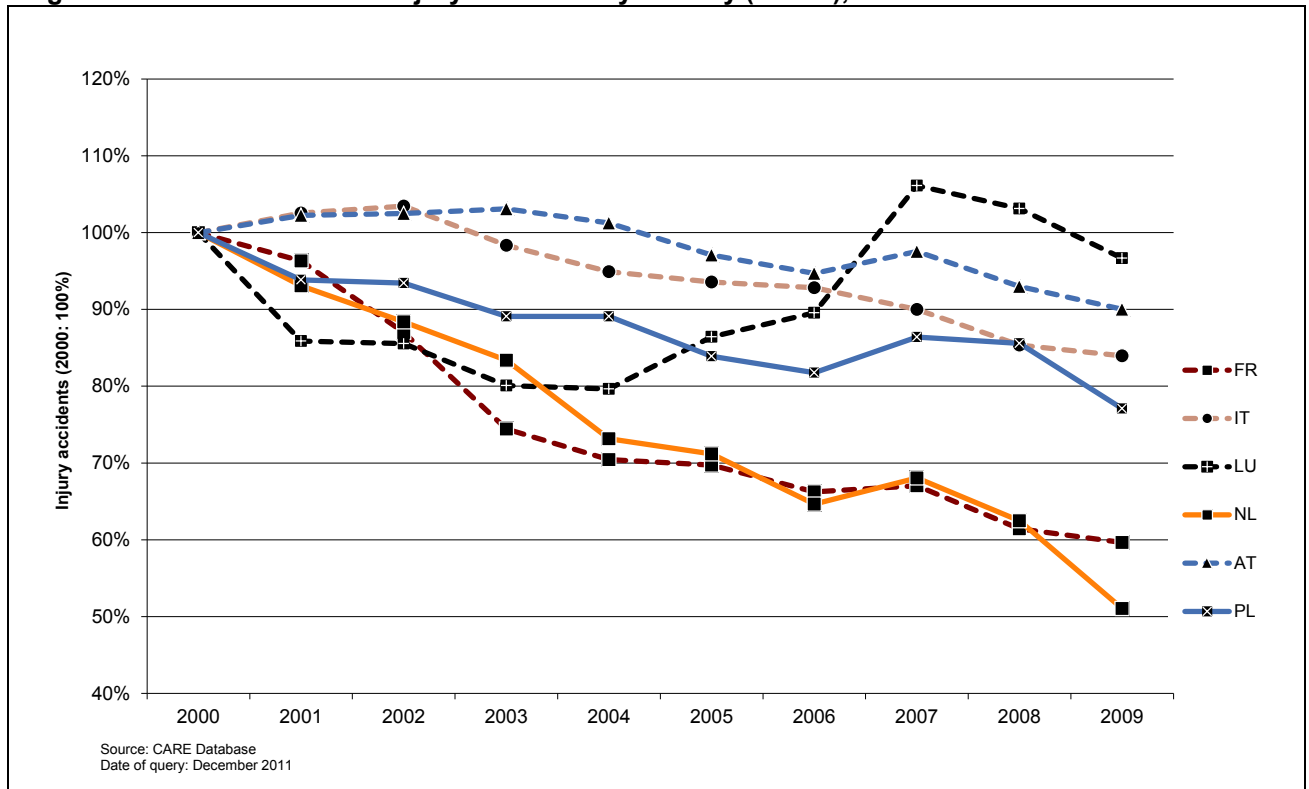


Figure 9: Annual number of injury accidents by country (PT-UK), 2000-2009

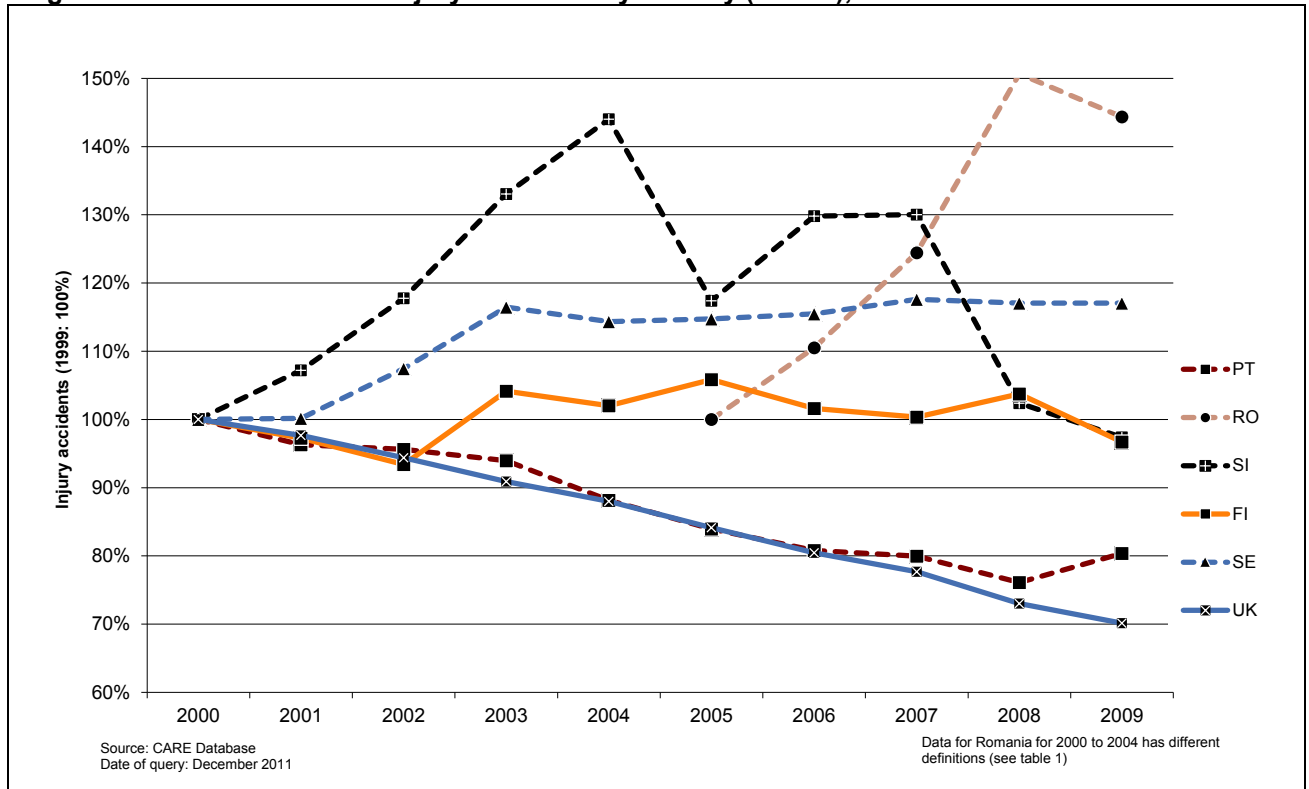


Table 2: Annual number of fatalities by country, 2000-2009

	2000	2001	2002	2003	2004	2005	2006	2007	2008	2009
BE	1.470	1.486	1.306	1.213	1.162	1.089	1.069	1.071	944	944
CZ	1.486	1.333	1.430	1.447	1.382	1.286	1.063	1.221	1.076	901
DK	498	431	463	432	369	331	306	406	406	303
DE	7.503	6.977	6.842	6.613	5.842	5.361	5.091	4.949	4.477	4.152
IE	418	412	378	337	377	400	365	338	280	
EL	2.037	1.880	1.634	1.605	1.670	1.658	1.657	1.612	1.553	1.456
ES	5.777	5.516	5.347	5.400	4.741	4.442	4.104	3.822	3.099	2.714
FR	8.079	8.160	7.655	6.058	5.530	5.318	4.709	4.620	4.275	4.273
IT	7.061	7.096	6.980	6.563	6.122	5.818	5.669	5.131	4.725	4.237
LU	76	70	62	53	50	47	43	46	35	48
NL	1.082	993	987	1.028	804	750	730	709	677	644
AT	976	958	956	931	878	768	730	691	679	633
PL		5.534	5.826	5.642	5.712	5.444	5.243	5.583	5.437	4.572
PT	1.857	1.671	1.675	1.546	1.294	1.247	969	974	885	840
RO	2.466	2.450	2.411	2.229	2.444	2.629	2.587	2.800	3.065	2.797
SI	314	278	269	242	274	258	262	293	214	171
FI	396	433	415	379	375	379	336	380	344	279
SE	591	583	560	529	480	440	445	471	397	
UK	3.580	3.598	3.581	3.658	3.368	3.336	3.298	3.059	2.645	2.337
EU-19	51.201	49.859	48.777	45.905	42.874	41.001	38.676	38.176	35.213	31.978
Yearly Change		-2,6	-2,2	-5,9	-6,6	-4,4	-5,7	-1,3	-7,8	-9,2
CY					117					
EE						170	204	196	132	98
HU				1.326	1.296	1.278	1.303	1.232	996	822
MT						17	11	12	9	15
LV					516	442	407	419	316	254
SK						606	614	661	606	384
EU-25	51.201	49.859	48.777	47.231	44.801	43.514	41.215	40.696	37.268	33.550
CH					510				357	349
CH			1.007	807	810	687	915	1.147	1.083	893

Figure 10: Annual number of fatalities by country (BE-ES), 2000-2009

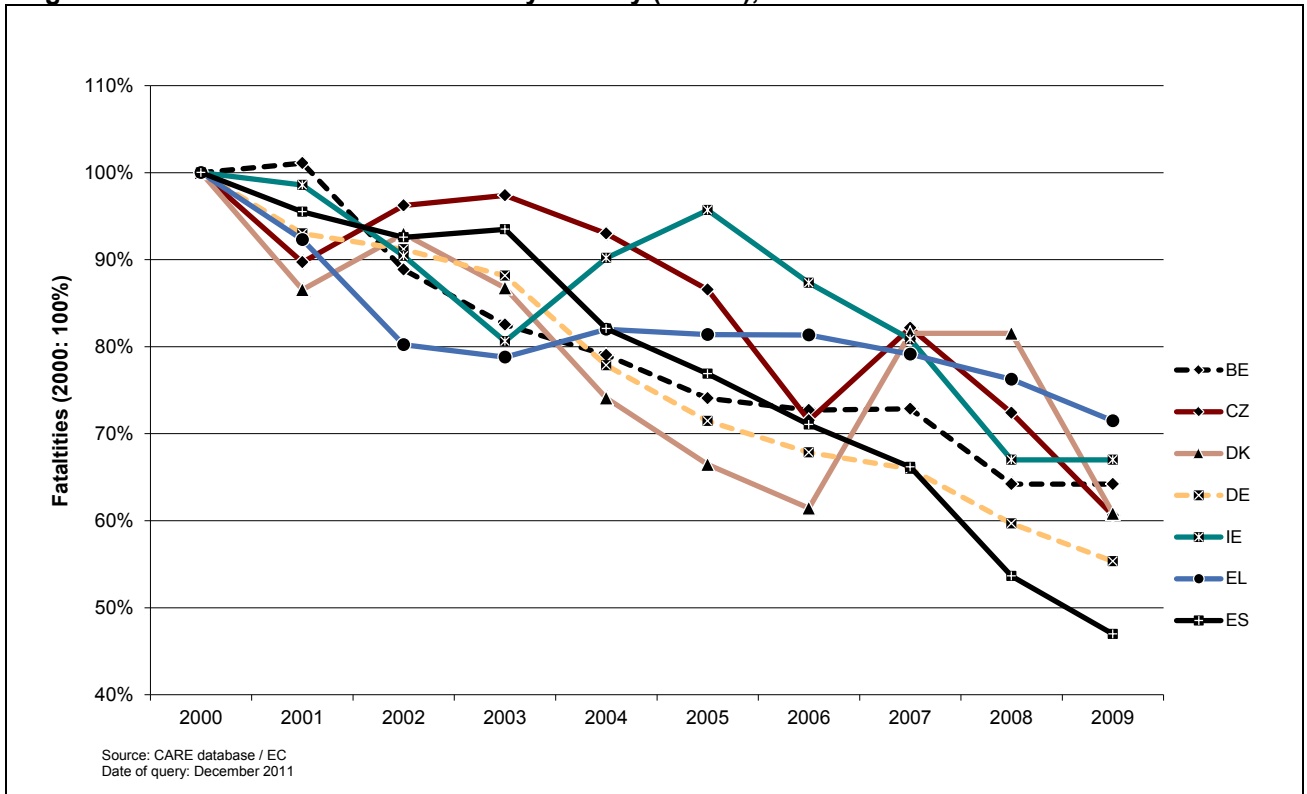


Figure 11: Annual number of fatalities by country (FR-PL), 2000-2009

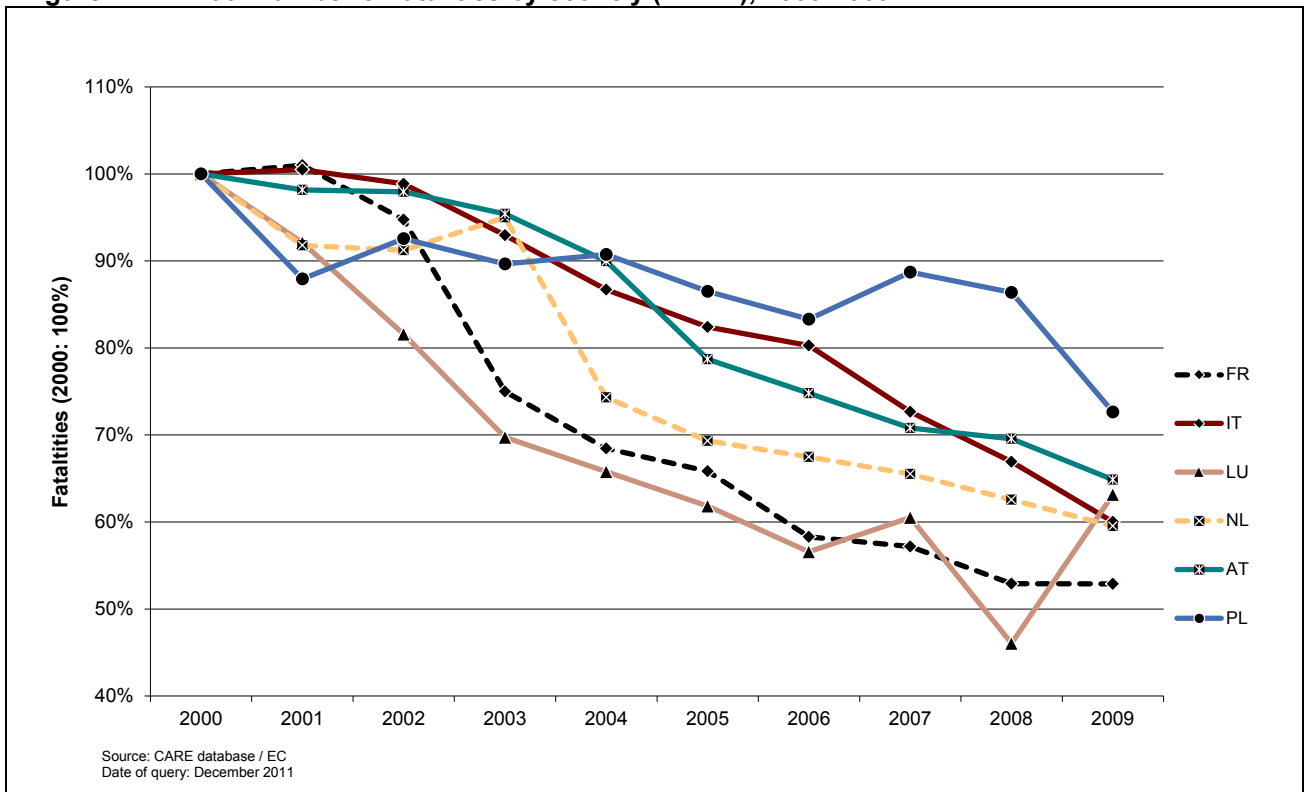


Figure 12: Annual number of fatalities by country (PT-UK), 2000-2009

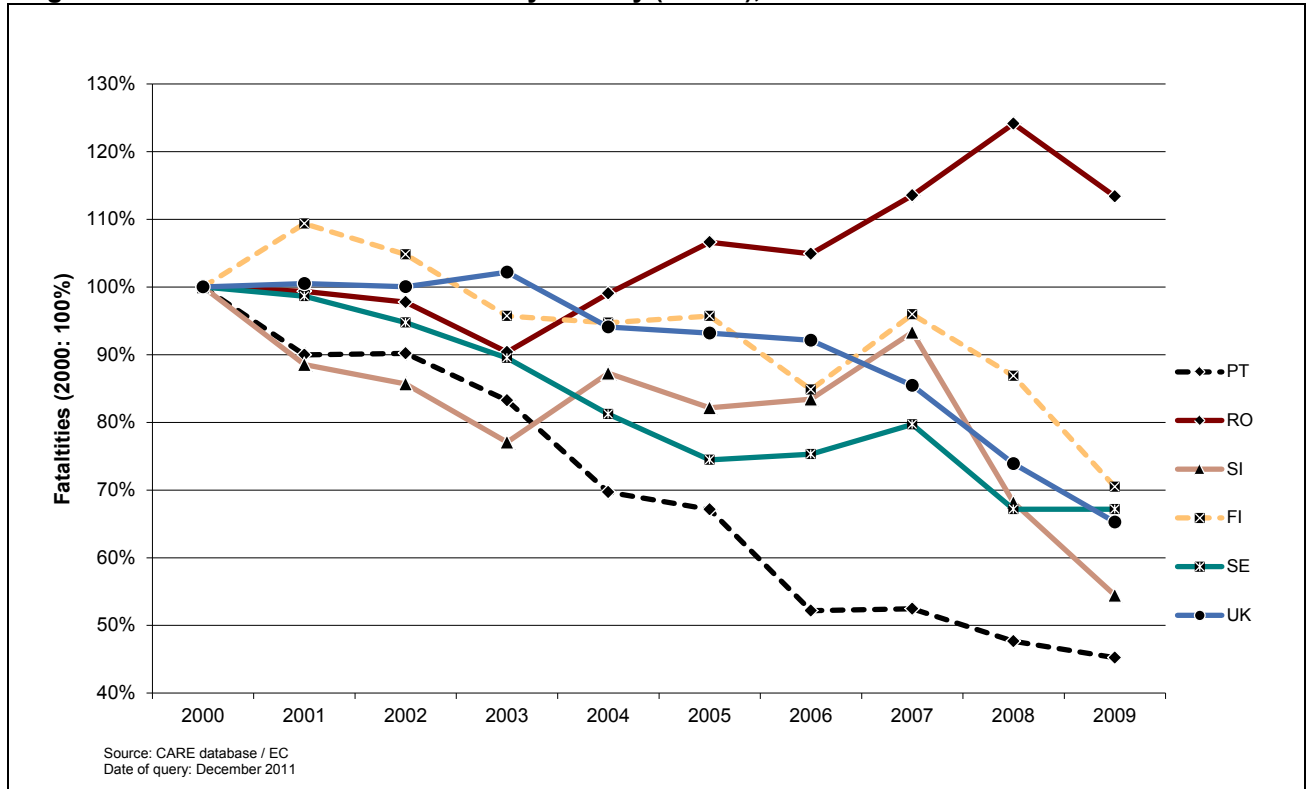


Table 3: Annual number of fatal accidents by country, 2000-2009

	2000	2001	2002	2003	2004	2005	2006	2007	2008	2009
BE	1.356	1.378	1.217	1.142	1.096	997	1.001	1.006	869	884
CZ	1.207	1.077	1.185	1.172	1.070	1.005	853	1.018	908	846
DK	436	354	371	382	341	305	284	366	378	271
DE	6.827	6.392	6.213	6.054	5.361	4.984	4.717	4.609	4.117	3.867
IE	362	360	346	301	334	360	321	309	254	
EL	1.803	1.669	1.438	1.400	1.484	1.482	1.501	1.442	1.411	1.296
ES	4.372	4.170	4.031	4.084	3.643	3.377	3.119	2.957	2.385	2.117
FR	6.811	6.920	6.549	5.168	4.766	4.857	4.326	4.265	3.933	3.956
IT	6.435	6.455	6.332	5.929	5.548	5.271	5.178	4.718	4.358	3.973
LU	68	65	52	48	48	42	41	43	34	44
NL	1.006	932	913	940	747	708	678	669	630	597
AT	889	861	873	848	818	712	664	644	629	576
PL	3.359	4.919	5.227	5.038	5.179	4.878	4.663	5.028	4.862	4.144
PT	1.450	1.316	1.323	1.222	1.024	988	786	765	721	673
RO	2.187	2.147	2.145	1.978	2.176	2.293	2.274	2.462	2.655	2.465
SI	290	243	240	220	253	230	233	263	200	154
FI	354	386	367	346	323	343	324	349	321	255
SE	535	511	490	460	430	406	404	426	355	
UK	3.257	3.313	3.260	3.375	3.106	3.040	3.036	2.819	2.439	2.161
EU-19	43.004	43.468	42.572	40.107	37.747	36.278	34.403	34.158	31.459	28.888
Yearly Change		1,1	-2,1	-5,8	-5,9	-3,9	-5,2	-0,7	-7,9	-8,2
EE						151	183	174	114	86
CY					110					
LV							366	376	285	227
HU				1.135	1.168	1.139	1.173	1.106	890	752
MT						12	11	12	9	11
SK						492	519	569	511	306
EU-25	43.004	43.468	42.572	41.242	39.024	38.072	36.655	36.395	33.264	30.269
CH					478				336	335
IS			22	20	20	16	28	15	12	15

3.2 Time series related to mode of transport

Figure 13: Percentage change in number of fatalities by mode of transport in EU-18 (2009 compared to 2000)

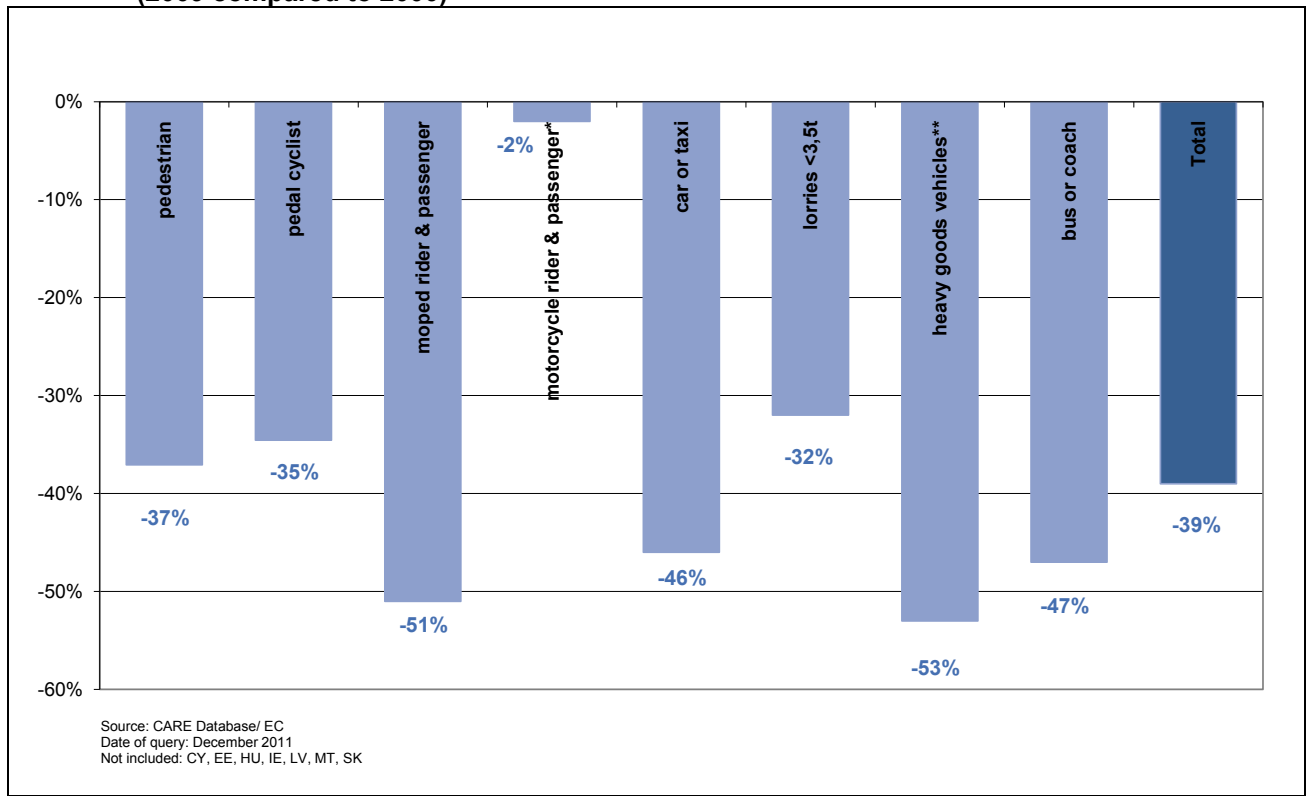


Table 4: Annual number of pedestrian fatalities by country, 2000-2009

	2000	2001	2002	2003	2004	2005	2006	2007	2008	2009
BE	142	158	127	113	101	108	122	104	99	101
CZ	362	322	308	290	281	298	202	232	238	176
DK	99	49	63	49	43	44	60	68	58	52
DE	993	900	873	812	838	686	711	695	653	591
IE	85	89	86	64	66	72	72	81	49	
EL	375	338	279	257	293	234	267	255	248	202
ES	899	846	776	786	683	680	614	591	502	470
FR	838	822	866	626	581	635	535	561	548	496
IT	982	1.032	1.226	871	810	786	758	627	646	667
LU	11	11	6	7	12	2	10	7	6	12
NL	106	106	97	97	68	83	66	86	56	63
AT	140	117	160	132	132	97	110	108	102	101
PL		1.866	1.987	1.879	1.987	1.756	1.802	1.951	1.882	1.467
PT	384	337	339	280	233	214	156	156	155	148
RO	1.110	1.088	1.101	944	1.059	978	1.034	1.113	1.067	1.016
SI	60	42	41	38	35	37	36	32	39	24
FI	62	62	40	59	49	45	49	48	53	30
SE	73	87	58	55	67	50	55	58	45	
UK	889	858	808	802	694	699	697	663	591	524
EU-19	9.476	9.130	9.241	8.161	8.032	7.504	7.356	7.436	7.037	5.710
Yearly Change		-3,7	1,2	-11,7	-1,6	-6,6	-2,0	1,1	-5,4	-18,8
EE						50	64	38	41	23
CY					18					
LV					197	174	153	158	105	82
HU				299	326	289	296	288	251	186
MT						6	4	3	1	4
SK						174	214	217	204	113
EU-25	9.476	9.130	9.241	8.460	8.573	8.197	8.087	8.140	7.637	6.117
CH					95				59	60
IS			1	3	3	1	4	1	0	2

Table 5: Annual number of pedal cyclist fatalities by country (includes all riders and passengers of pedal cycles), 2000-2009

	2000	2001	2002	2003	2004	2005	2006	2007	2008	2009
BE	134	130	105	110	79	71	92	90	86	89
CZ	151	141	160	159	131	115	110	116	93	84
DK	58	56	52	47	53	41	31	54	54	25
DE	659	635	583	616	475	575	486	425	456	462
IE	10	12	18	10	11	10	9	15	13	
EL	22	29	14	21	24	18	21	16	22	15
ES	84	100	96	78	88	82	72	90	59	57
FR	270	256	223	201	177	180	181	142	148	162
IT	401	366	326	355	322	335	311	352	288	295
LU	1	1	1	0	0	1	0	0	0	2
NL	198	195	169	188	157	151	179	147	145	138
AT	62	55	80	56	58	47	48	37	62	39
PL		610	681	647	691	603	509	498	433	371
PT	56	50	58	63	47	48	40	34	42	29
RO	157	145	132	156	130	206	198	179	179	157
SI	26	16	18		22	19	15	17	16	18
FI	53	59	53	39	26	43	29	22	18	20
SE	47	43	42	35	27	38	26	33	30	
UK	131	140	133	116	136	152	147	138	117	104
EU-19	3.130	3.039	2.944	2.897	2.654	2.735	2.504	2.405	2.261	2.110
Yearly Change		-2,9	-3,1	-1,6	-8,4	3,1	-8,4	-4,0	-6,0	-6,7
EE						50	64	38	41	23
CY					18					
LV					197	174	153	158	105	82
HU				299	326	289	296	288	251	186
MT						6	4	3	1	4
SK						174	214	217	204	113
EU-25	3.130	3.039	2.944	3.196	3.195	3.428	3.235	3.109	2.863	2.518
CH					42				27	54
IS			1	3	3	1	4	1	0	2

Table 6: Annual number of moped rider & passenger fatalities by country, 2000-2009

	2000	2001	2002	2003	2004	2005	2006	2007	2008	2009
BE	66	63	68	45	33	30	36	26	32	25
CZ	16	9	17	11	5	8	3	3	2	9
DK	47	43	38	43	46	29	24	48	30	15
DE	157	138	131	134	122	107	107	100	110	99
EL	90	77	55	53	55	58	57	43	41	28
ES	474	461	383	391	361	312	303	233	181	156
FR	456	450	387	393	339	356	317	324	291	299
IT	637	578	452	520	456	385	346	358	292	212
LU	0	0	0	0	1	0	0	1	0	0
NL	107	78	98	94	57	56	63	60	51	47
AT	44	37	46	47	44	41	39	24	25	30
PL		63	59	54	51	53	57	59	87	68
PT	225	184	145	157	121	106	97	71	71	58
RO	3	4	6	10	1	20	45	81	150	122
SI	22	16	5	4	5	5	12	12	8	3
FI	9	7	7	12	14	4	13	11	13	11
SE	10	9	12	9	18	8	15	14	11	
UK	15	14	21	25	26	23	29	18	21	16
EU-18	2.441	2.231	1.930	2.002	1.755	1.601	1.563	1.486	1.416	1.209
Yearly Change		-8,6	-13,5	3,7	-12,3	-8,8	-2,4	-4,9	-4,7	-14,6
EE						2	2	4	6	3
CY					11					
LV					4	5	6	4	4	1
HU				36	22	40	42	31	26	23
EU-22	2.441	2.231	1.930	2.038	1.792	1.648	1.613	1.525	1.452	1.236
CH					9				9	8

Table 7: Annual number of motorcycle rider & passenger fatalities by country, 2000-2009

	2000	2001	2002	2003	2004	2005	2006	2007	2008	2009
BE	118	147	158	124	120	123	130	139	108	137
CZ	100	86	117	101	97	116	113	136	121	85
DK	24	12	24	25	23	16	21	36	40	27
DE	945	964	913	946	858	875	793	807	656	650
IE	40	50	44	55	49	56	29	33	29	
EL	406	426	341	310	379	399	440	420	394	405
ES	392	370	401	367	399	472	488	640	484	437
FR	964	1.092	1.063	883	866	892	789	853	817	908
IT	770	848	907	1.035	1.139	1.120	1.127	1.182	1.085	1.037
LU	8	6		13	10	6	8	5	9	7
NL	89	76	93	95	84	77	57	64	67	68
AT	112	107	89	109	98	98	95	96	91	87
PL		169	167	145	181	157	164	215	262	290
PT	212	229	225	213	181	188	137	145	116	115
RO	15	9	13	8	19	23	35	73	90	74
SI	19	36	18	25	27	33	42	41	40	28
FI	10	16	22	23	22	32	26	32	36	27
SE	39	38	37	47	56	46	55	60	51	
UK	597	580	607	690	581	561	583	596	488	472
EU-19	5.029	5.261	5.239	5.214	5.189	5.290	5.132	5.573	4.984	4.934
Yearly Change		4,6	-0,4	-0,5	-0,5	1,9	-3,0	8,6	-10,6	-1,0
EE						5	5	10	1	2
CY					24					
LV							10	10	14	10
HU				66	72	100	89	112	91	73
MT						3	2	4	3	2
SK						45	37	54	39	34
EU-25	5.029	5.261	5.239	5.280	5.285	5.443	5.275	5.763	5.132	5.055
CH					114				83	78
IS					2	2	3	3	1	2

Figure 14: Annual number of fatalities by mode of transport (in which the fatality was travelling, includes driver & passenger), 2000-2009

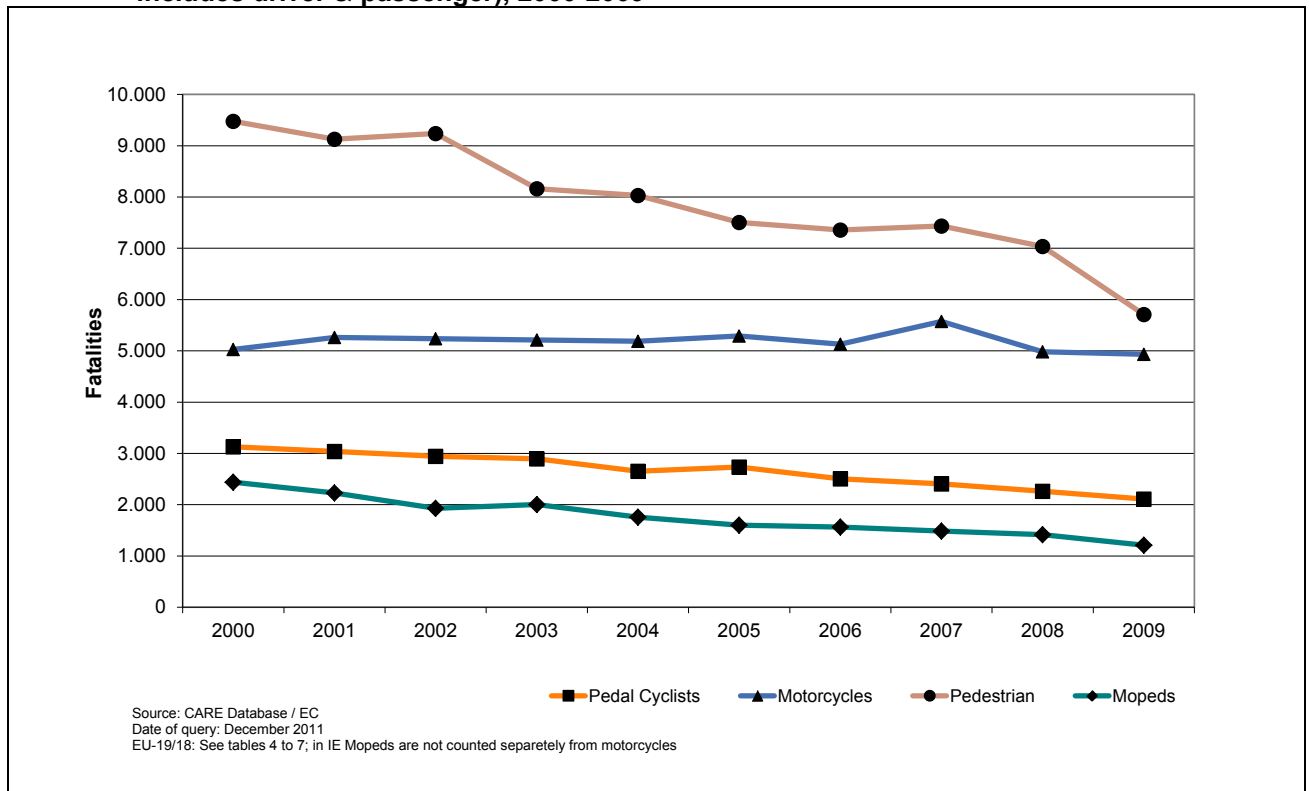


Table 8: Annual number of car and taxi driver and passengers fatalities by country, 2000-2009

	2000	2001	2002	2003	2004	2005	2006	2007	2008	2009
BE	922	899	779	688	623	624	589	550	479	464
CZ	784	715	759	798	779	679	567	661	573	497
DK	235	242	246	236	186	169	138	168	196	164
DE	4.396	4.023	4.005	3.774	3.238	2.833	2.683	2.625	2.368	2.110
IE	262	231	202	174	205	222	226	171	160	
EL	922	803	793	761	775	816	722	771	708	680
ES	3.288	3.144	3.104	3.211	2.691	2.389	2.096	1.824	1.495	1.260
FR	5.290	5.283	4.864	3.689	3.369	3.065	2.627	2.466	2.205	2.162
IT	3.850	3.847	3.653	3.377	3.032	2.830	2.781	2.320	2.115	1.793
LU	54	51	52	33	27	38	23	27	20	26
NL	513	477	479	483	398	337	323	299	299	288
AT	549	570	524	524	480	432	384	378	367	325
PL		2.438	2.548	2.541	2.459	2.526	2.392	2.582	2.540	2.179
PT	732	636	710	630	537	495	375	417	358	301
RO	903	933	874	856	1.014	1.068	992	1.096	1.324	1.168
SI	126	107	124	102	124	107	96	126	82	59
FI	224	262	267	217	221	231	203	241	202	165
SE	393	373	379	349	288	273	261	279	234	
UK	1.770	1.816	1.832	1.841	1.757	1.744	1.687	1.489	1.312	1.123
EU-19	27.651	26.850	26.194	24.284	22.203	20.878	19.165	18.490	17.037	15.158
Yearly Change		-2,9	-2,4	-7,3	-8,6	-6,0	-8,2	-3,5	-7,9	-11,0
EE						88	106	122	69	54
CY					37					
LV							182	203	167	115
HU				640	606	620	630	555	448	386
MT						3	5	4	4	9
SK						294	282	293	292	182
EU-25	27.651	26.850	26.194	24.924	22.844	21.884	20.370	19.667	18.016	15.904
CH					238				156	136
IS			26	17	15	15	20	11	10	9

Table 9: Annual number of heavy goods vehicles >3,5t fatalities by country, 2000-2009

	2000	2001	2002	2003	2004	2005	2006	2007	2008	2009
BE	20	28	15	15	18	16	16	25	25	20
CZ	34	22	20	29	32	26	22	21	18	20
DK	3	2	5	2	3	2	2	4	2	3
DE	132	93	113	107	105	97	113	131	91	79
IE	6	6	3	8	7	4	2	7	4	
EL	26	28	23	26	19	15	23	14	19	7
ES	196	151	173	160	151	141	132	90	85	69
FR	123	143	132	113	85	90	87	68	76	54
IT	116	76	59	71	54	63	50	59	45	35
LU	0	1	3	0	0	0	2	4	0	0
NL	8	16	11	8	10	11	9	7	10	4
AT	10	14	12	14	21	11	15	11	3	9
PL		243	270	264	229	217	227	198	175	136
PT	39	30	18	31	27	31	18	25	17	29
SI	3	3	5		4	3	2	4		
FI	9	6	5	9	2	6	7	7	5	6
SE	11	5	13	6	5	6	7	6	5	
UK	59	57	63	46	47	59	41	54	24	15
EU-18	1.038	924	943	909	819	798	775	735	604	495
Yearly Change		-10,6	0,7	-1,7	-10,9	-3,0	-4,4	-5,1	-17,1	-19,2
EE						7	6	3	3	6
CY					0					
LV					7	3	13	12	3	5
HU				14	27	15	28	15	22	12
MT									1	
SK						18	20	22	18	17
EU-25	1.096	980	987	984	898	881	868	812	677	549
CH					6				3	1
IS				2	1	0	0	0	1	1

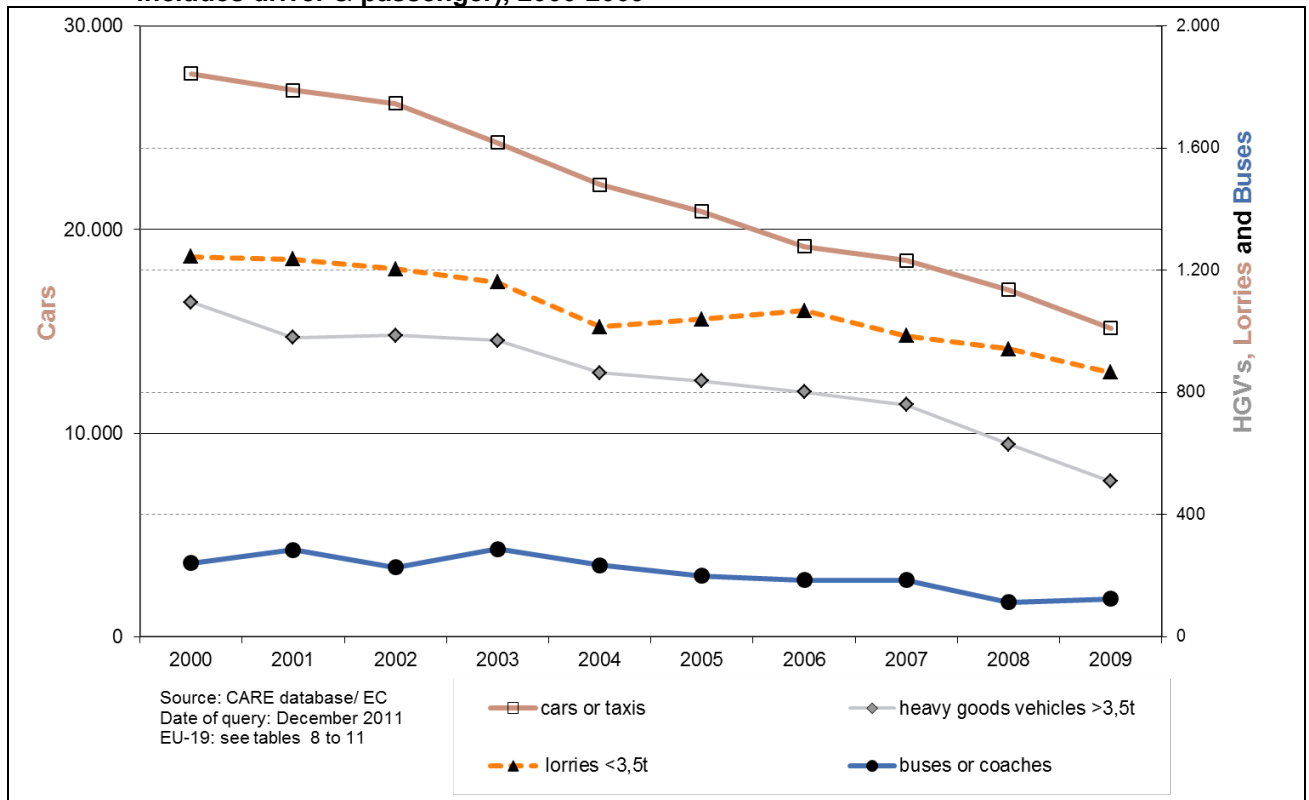
Table 10: Annual number of lorries <3,5t fatalities by country, 2000-2009

	2000	2001	2002	2003	2004	2005	2006	2007	2008	2009
BE	52	48	40	27	32	44	34	49	40	43
CZ	32	27	32	20	35	36	31	45	27	25
DK	23	22	29	20	13	23	24	24	22	16
DE	147	137	131	129	128	116	122	84	92	85
IE	10	20	17	19	19	18	16	25	16	
EL	118	94	72	86	74	72	82	56	62	75
ES	320	324	342	316	292	244	262	234	189	170
FR	78	79	80	79	61	56	120	131	134	144
IT	74	96	98	72	59	63	49	25	40	32
LU	0	0	0	0	0	0	0	0	0	0
NL	52	42	36	55	14	20	21	35	31	24
AT	18	25	19	28	22	24	16	15	19	13
PT	160	137	140	137	103	120	98	70	88	68
SI	1	5	3	3	6	8	2	3	3	6
FI	16	9	12	15	14	12	3	12	9	10
SE	13	15	8	13	5	11	9	9	11	
UK	70	68	72	74	67	57	55	63	47	40
EU-17	1.184	1.148	1.131	1.093	944	924	944	880	830	778
Yearly Change		-0,6	-2,7	-3,6	-12,6	2,5	2,7	-7,8	-4,3	-8,3
CY					0					
LV						3	2		2	4
HU				31	41	44	36	47	33	28
MT						5				
SK						9	3	2	2	1
EU-22	1.245	1.237	1.204	1.192	1.056	1.101	1.109	1.034	980	898
CH					0				5	3
IS			1	0	1	1	2	0	0	1

Table 11: Annual number of bus or coach fatalities by country, 2000-2009

	2000	2001	2002	2003	2004	2005	2006	2007	2008	2009
BE	8	9	9	1	5	0	0	4	2	1
CZ	2	7	6	29	17		10	2		3
DK	4	2	4	10	1	3	3	3	0	0
DE	9	11	12	17	16	9	12	24	10	11
IE	0	0	1	0	0	5	3	1	0	
EL	9	4	9	38	8	8	4	0	4	0
ES	45	50	15	27	5	26	37	15	28	21
FR	20	14	11	17	21	15	8	35	20	5
IT	17	19	18	23	25	12	24	18	11	2
LU	0	0	0	0	0	0	0	0	0	0
NL	0	1	1	0	0	0	1	1	3	0
AT	13	14	5		9	2	8	4	2	2
PL		59	43	51	43	52	15	17	11	19
PT	5	28	8	2	3	2	1	15	1	6
RO	22	15	52	33	26	41	19	26	6	36
SI	0	0	0	0	0	0	0	0	0	0
FI	0	3	3	0	24	2	2	0	0	1
SE	0	6	5	10	4	1	10	6	1	
UK	29	42	26	29	28	21	28	14	14	16
EU-19	242	284	228	287	235	199	185	185	113	124
Yearly Change		17,4	-19,7	25,9	-18,1	-14,9	-7,5	0,0	-38,9	9,7
EE						1	1			2
CY					0					
LV					10	2	1	3	1	2
HU				38	6	4	14	14	3	3
MT					1	1				1
SK						8	4	8	4	12
EU-25	242	284	228	325	252	216	205	210	121	144
CH					0				4	0
IS				0	0	0	1	0	0	0

Figure 15: Annual number of fatalities by mode of transport (in which the fatality was travelling, includes driver & passenger), 2000-2009



3.3 Time series related to person age and gender

Figure 16: Increase / decrease of number of fatalities by gender (EU-19), 2009 compared to 2000

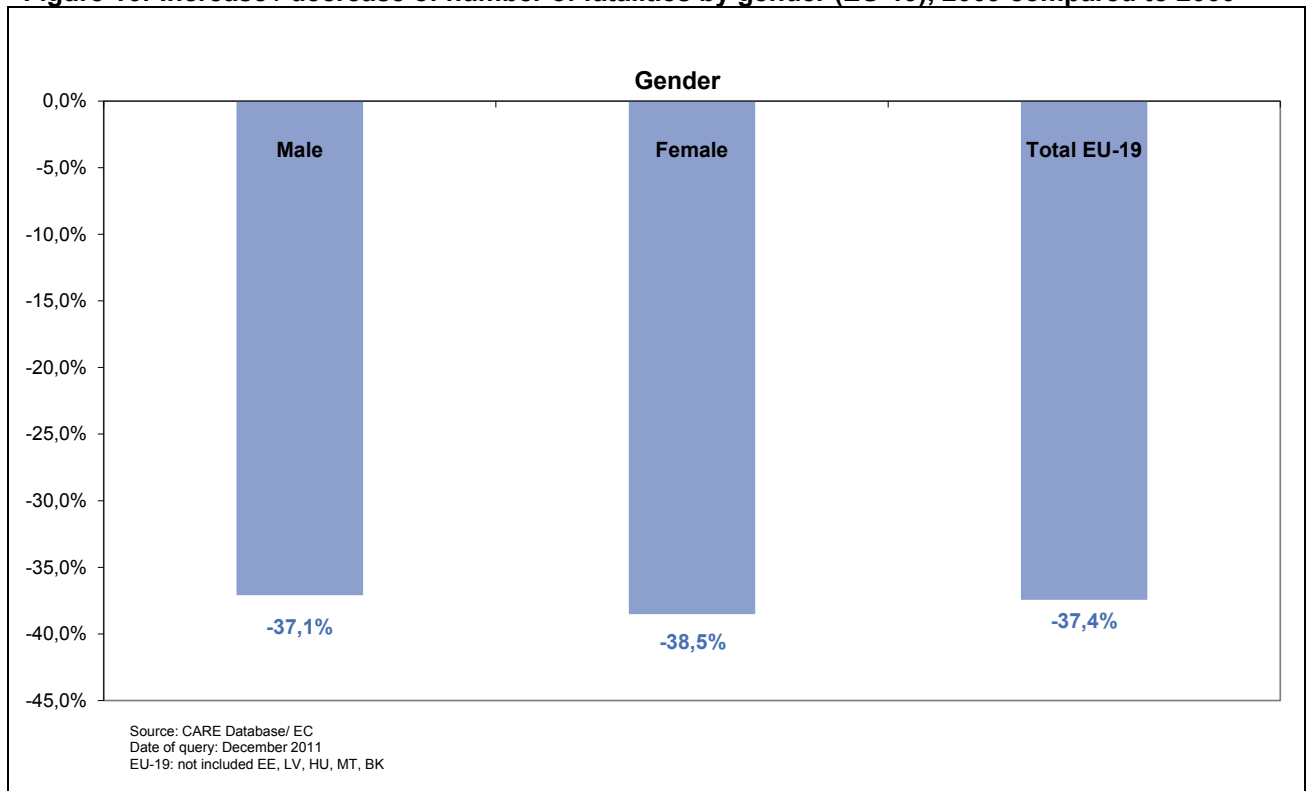


Table 12: Annual number of fatalities by age group by country, 2000-2001

	2000						2001					
	0-14	15-17	18-24	25-49	50-64	65+	0-14	15-17	18-24	25-49	50-64	65+
BE	52	55	328	608	176	238	63	46	281	632	192	264
CZ	54	44	258	595	286	243	38	37	236	519	252	241
DK	25	30	85	144	80	134	21	23	68	147	70	102
DE	240	336	1.736	2.832	1.044	1.311	231	286	1.606	2.591	980	1.283
IE	22	23	117	158	37	44	26	19	114	152	45	47
EL	40	60	375	805	302	428	47	51	385	697	284	385
ES	136	211	1.225	2.608	1.029	1.437	187	199	1.088	2.686	1.001	1.369
FR	3	1	16	34	11	10	5	3	16	27	12	7
IT	182	217	1.082	2.405	865	849	160	201	971	2.354	811	867
LU	336	308	1.704	3.204	1.017	1.370	273	324	1.807	3.281	995	1.393
NL	56	54	227	366	144	235	48	56	162	363	142	222
AT	27	37	204	362	156	190	26	32	188	380	146	186
PL							262	204	894	2.312	952	910
PT	75	52	355	719	294	342	56	55	329	626	242	320
RO	184	53	305	1.021	497	406	187	56	311	1.007	472	417
SI	8	18	51	120	61	56	4	20	52	116	40	46
FI	20	16	51	132	71	106	19	20	84	137	77	96
SE	19	16	102	202	98	154	18	22	100	188	108	147
UK	171	169	646	1.455	453	679	192	205	691	1.379	447	652
EU-19	1.912	1.904	9.761	20.082	7.573	9.142	1.863	1.859	9.383	19.594	7.268	8.954
Yearly Change							-2,6	-2,4	-3,9	-2,4	-4,0	-2,1
EE												
CY												
LV												
HU												
MT												
SK												
EU-25	1.912	1.904	9.761	20.082	7.573	9.142	1.863	1.859	9.383	19.594	7.268	8.954
CH												
IS												

Table 13: Annual number of fatalities by age group by country, 2002-2003

	2002						2003					
	0-14	15-17	18-24	25-49	50-64	65+	0-14	15-17	18-24	25-49	50-64	65+
BE	36	47	262	568	171	210	32	39	241	484	166	240
CZ	46	33	222	615	291	211	38	41	243	612	268	231
DK	14	26	76	172	72	103	22	16	67	166	62	99
DE	216	318	1.550	2.560	962	1.236	208	316	1.392	2.457	910	1.329
IE	18	19	79	137	43	60	16	12	82	126	40	53
EL	47	47	283	644	254	340	45	82	296	627	213	322
ES	196	187	1.109	2.670	973	1.461	148	216	989	2.560	919	1.379
FR	3	3	10	36	5	5	1	1	10	27	8	6
IT	151	173	935	2.298	808	835	156	190	972	2.368	733	817
LU	245	254	1.644	3.084	977	1.361	203	241	1.283	2.340	783	1.120
NL	37	62	205	355	114	213	64	54	179	363	147	221
AT	25	43	172	348	157	211	37	41	174	314	167	197
PL	248	204	958	2.346	946	976	231	154	908	2.352	953	885
PT	62	55	270	714	246	304	55	31	245	658	229	304
RO	188	44	275	966	481	458	117	46	267	945	437	417
SI	3	11	57	97	54	47	3	7	51	89	39	53
FI	18	15	73	131	79	99	22	12	59	124	66	96
SE	18	20	100	180	103	139	21	23	93	181	93	118
UK	160	194	725	1.372	444	655	145	201	772	1.413	452	658
EU-19	1.731	1.755	9.005	19.293	7.180	8.924	1.564	1.723	8.323	18.206	6.685	8.545
Yearly Change	-7,1	-5,6	-4,0	-1,5	-1,2	-0,3	-9,6	-1,8	-7,6	-5,6	-6,9	-4,2
EE												
CY												
LV												
HU							32	32	129	581	297	232
MT												
SK												
EU-25	1.731	1.755	9.004	19.293	7.180	8.924	1.596	1.755	8.452	18.787	6.982	8.777
CH												
IS	5		4	8	6	6	2	1	5	3	5	7

Table 14: Annual number of fatalities by age group by country, 2004-2005

	2004						2005					
	0-14	15-17	18-24	25-49	50-64	65+	0-14	15-17	18-24	25-49	50-64	65+
BE	26	32	240	509	150	201	37	31	196	473	160	186
CZ	27	28	219	587	273	247	41	31	223	520	264	202
DK	20	10	67	142	50	80	13	20	52	124	52	70
DE	153	264	1.269	2.123	827	1.201	159	224	1.076	1.930	804	1.162
IE	7	15	96	134	43	61	9	26	110	139	47	56
EL	43	58	304	702	226	317	44	38	326	687	219	322
ES	124	213	956	2.400	837	1.293	131	211	919	2.284	783	1.199
FR		2	8	24	2	14	4	1	9	21	4	8
IT	127	169	793	2.109	677	746	120	138	733	1.967	688	719
LU	175	198	1.276	2.175	730	962	130	218	1.206	2.032	698	1.014
NL	35	39	154	263	113	199	31	33	122	261	115	188
AT	22	37	169	332	139	177	25	48	140	296	108	151
PL	228	153	851	2.250	1.104	965	167	148	933	2.100	1.030	931
PT	48	39	213	549	197	230	31	35	221	510	215	222
RO	164	67	294	965	471	486	152	56	294	1.062	574	491
SI	9	6	49	115	46	49	10	7	44	116	40	41
FI	13	21	74	109	61	97	21	16	53	140	58	91
SE	14	19	78	159	71	139	10	19	67	153	84	104
UK	147	199	728	1.290	397	589	125	222	700	1.244	420	616
EU-19	1.382	1.569	7.838	16.937	6.414	8.053	1.260	1.522	7.424	16.059	6.363	7.773
Yearly Change	-11,7	-8,9	-5,8	-7,0	-4,1	-5,8	-8,8	-3,0	-5,3	-5,2	-0,8	-3,4
EE							12	5	26	73	32	21
CY		7	25	42	18	25						
LV	6	21	71	219	95	80	10	12	63	187	76	65
HU	38	20	138	578	290	214	34	26	159	557	286	206
MT							3	3	5	3		3
SK							19	18	83	261	144	77
EU-25	1.425	1.617	8.071	17.774	6.817	8.369	1.338	1.586	7.760	17.139	6.900	8.145
CH	20	21	108	165	73	123						
IS	3	1	4	9	2	4		2	6	3	6	2

Table 15: Annual number of fatalities by age group by country, 2006-2007

	2006						2007					
	0-14	15-17	18-24	25-49	50-64	65+	0-14	15-17	18-24	25-49	50-64	65+
BE	32	21	195	482	141	193	30	27	215	464	159	170
CZ	32	18	183	432	215	173	25	29	190	523	230	201
DK	13	19	65	91	46	72	20	18	58	145	69	95
DE	136	173	1.011	1.824	791	1.154	111	176	971	1.799	736	1.153
IE	15	18	95	133	36	66	15	14	76	123	45	58
EL	36	40	305	725	197	327	42	43	280	685	207	330
ES	110	186	825	2.290	802	1.220	95	190	723	2.187	681	1.105
FR			8	24	5	3	2	2	8	22	4	7
IT	109	131	601	1.952	591	671	99	135	550	1.817	566	604
LU	120	183	1.037	1.739	644	921	150	166	984	1.789	627	896
NL	37	33	112	233	105	209	36	32	134	223	103	181
AT	23	35	129	257	130	156	13	32	135	254	112	145
PL	151	150	895	1.959	1.054	888	157	181	953	2.112	1.140	945
PT	22	10	125	404	178	215	27	11	148	385	171	225
RO	145	55	293	1.036	554	504	116	52	402	1.040	569	621
SI	9	10	54	114	42	33	6	6	64	126	40	51
FI	5	21	67	104	68	71	14	18	75	118	76	79
SE	16	24	75	142	93	95	10	22	86	148	100	105
UK	147	207	706	1.234	423	572	96	192	639	1.142	407	575
EU-19	1.158	1.334	6.781	15.175	6.115	7.543	1.064	1.346	6.691	15.102	6.042	7.546
Yearly Change	-8,1	-12,4	-8,7	-5,5	-3,9	-3,0	-8,0	0,9	-1,3	-0,5	-1,2	0,0
EE	6	5	35	73	53	32	6	8	41	70	27	41
CY												
LV	14	11	59	165	74	61	11	15	44	169	90	73
HU	42	24	134	565	307	216	37	30	139	541	264	209
MT		1	3	5	1	1			4	5		3
SK	13	8	100	263	131	95	28	6	87	274	129	97
EU-25	1.233	1.383	7.112	16.245	6.682	7.948	1.147	1.405	7.006	16.161	6.552	7.965
CH												
IS	1	3	7	11	5	4	1		2	7	2	3

Table 16: Annual number of fatalities by age group by country, 2008-2009

	2008						2009					
	0-14	15-17	18-24	25-49	50-64	65+	0-14	15-17	18-24	25-49	50-64	65+
BE	35	28	177	411	139	149	16	21	147	355	150	163
CZ	19	14	193	437	209	186	16	13	133	405	166	167
DK	19	14	69	146	61	97	10	17	53	121	41	61
DE	102	174	887	1.515	727	1.066	90	133	796	1.351	678	1.104
IE	18	20	75	91	24	47						
EL	35	41	246	658	221	329	43	37	242	617	211	275
ES	85	163	634	1.937	660	1.099	71	121	579	1.596	669	1.111
FR			8	16	5	4	6		10	12	11	9
IT	83	95	469	1.400	465	544	61	70	357	1.273	412	507
LU	114	136	956	1.624	622	823	122	189	901	1.653	612	796
NL	23	32	107	228	113	174	23	26	126	191	91	187
AT	12	26	134	220	115	172	15	29	99	229	102	159
PL	146	185	948	1.982	1.163	962	128	120	833	1.668	970	810
PT	23	11	113	363	174	197	23	19	109	331	150	205
RO	137	58	439	1.182	678	571	125	58	416	1.000	597	601
SI	4	10	38	87	41	34	2	4	30	61	35	39
FI	8	26	50	111	56	93	6	23	51	84	46	69
SE	6	13	64	142	70	102						
UK	110	160	542	989	344	499	69	126	467	913	330	432
EU-19	979	1.206	6.149	13.539	5.887	7.148	850	1.039	5.488	12.093	5.365	6.844
Yearly Change	-8,1	-10,4	-8,1	-10,4	-2,6	-5,2	-13,2	-13,8	-10,7	-10,7	-8,9	-4,4
EE	3	4	28	40	28	29	4	2	21	39	13	18
CY												
LV	11	13	48	126	63	55	7	4	31	115	48	49
HU	24	32	103	407	237	179	22	16	81	353	184	166
MT			2	5		2	1		2	5	2	5
SK	23	9	92	198	111	72	9	5	53	122	80	51
EU-25	1.040	1.264	6.420	14.313	6.325	7.484	893	1.066	5.676	12.727	5.692	7.125
CH	10	12	44	123	65	103	21	5	68	97	68	90
IS			3	2	3	4		1	1	8	4	3

Table 17: Annual number of female fatalities by country, 2000-2009

	2000	2001	2002	2003	2004	2005	2006	2007	2008	2009
BE	367	384	341	299	250	260	248	215	221	234
CZ	368	338	352	325	326	298	225	275	259	225
DK	151	117	119	122	98	80	87	105	107	91
DE	2.065	1.923	1.889	1.757	1.571	1.445	1.371	1.309	1.229	1.102
IE	104	103	101	79	102	102	97	85	75	
EL	440	416	351	289	364	355	290	338	304	250
ES	1.338	1.325	1.263	1.246	1.124	958	899	823	676	621
FR	1.951	2.057	1.869	1.435	1.349	1.314	1.155	1.118	1.013	1.041
IT	1.631	1.754	1.578	1.409	1.245	1.243	1.277	1.005	960	926
LU	17	17	12	10	16	17	10	7	8	13
NL	294	246	246	262	224	210	212	192	179	175
AT	246	251	276	251	215	195	190	161	170	155
PL		1.322	1.363	1.324	1.291	1.243	1.232	1.333	1.321	1.109
PT	347	363	348	302	264	233	182	188	209	173
RO	613	579	596	504	603	688	661	740	765	694
SI	73	51	67	54	54	71	42	59	36	39
FI	133	137	114	107	118	96	95	101	79	71
SE	153	149	137	138	116	113	112	127	111	
UK	914	864	915	920	829	816	806	752	682	597
EU-19	12.527	12.396	11.937	10.833	10.159	9.737	9.191	8.933	8.404	7.702
Yearly Change		-1,0	-3,7	-9,2	-6,2	-4,1	-5,6	-2,8	-5,9	-8,3
EE						42	50	45	34	26
CY					21					
LV					141	118	97	100	77	42
HU				318	302	308	293	314	237	207
MT						4		1	3	5
SK						144	134	156	111	88
EU-25	12.527	12.396	11.937	11.151	10.621	10.353	9.765	9.549	8.864	8.070
CH					115				90	80
IS			14	8	7	6	11	2	2	3

Table 18: Annual number of male fatalities by country, 2000-2009

	2000	2001	2002	2003	2004	2005	2006	2007	2008	2009
BE	1.102	1.102	962	911	908	823	818	850	717	705
CZ	1.118	995	1.078	1.122	1.056	988	838	946	817	659
DK	347	314	344	310	271	251	219	300	299	212
DE	5.434	5.052	4.952	4.854	4.264	3.913	3.717	3.638	3.247	3.050
IE	302	304	260	246	259	286	262	250	199	
EL	1.590	1.458	1.277	1.313	1.303	1.296	1.361	1.268	1.244	1.201
ES	4.323	4.123	4.008	4.062	3.551	3.446	3.192	2.985	2.413	2.087
FR	6.127	6.103	5.786	4.622	4.181	4.004	3.554	3.502	3.262	3.232
IT	5.430	5.342	5.402	5.154	4.877	4.575	4.392	4.126	3.765	3.311
LU	59	52	50	43	34	30	33	38	27	35
NL	784	743	734	758	568	540	518	517	498	469
AT	730	707	680	680	663	573	540	530	509	478
PL		4.202	4.448	4.299	4.395	4.175	3.993	4.241	4.099	3.456
PT	1.504	1.306	1.326	1.244	1.028	1.005	779	779	674	666
RO	1.853	1.871	1.815	1.725	1.841	1.941	1.926	2.060	2.300	2.103
SI	241	227	202	188	220	187	220	232	178	132
FI	263	296	301	272	257	283	241	279	265	208
SE	438	433	423	391	364	324	333	344	286	
UK	2.666	2.728	2.662	2.738	2.539	2.520	2.492	2.307	1.962	1.740
EU-19	38.513	37.358	36.710	34.932	32.579	31.160	29.428	29.192	26.761	24.229
Yearly Change		-3,0	-1,7	-4,8	-6,7	-4,4	-5,6	-0,8	-8,3	-9,5
EE						126	152	147	97	71
CY					96					
LV					375	324	309	317	239	166
HU				1.008	993	963	1.008	916	757	612
MT						13	11	11	6	10
SK						462	480	505	495	296
EU-25	38.513	37.358	36.710	35.940	34.043	33.048	31.388	31.088	28.353	25.383
CH					395				267	269
IS			15	15	16	13	20	13	10	14

Figure 17: Annual distribution of fatalities by gender, EU-19 (2000 and 2009)

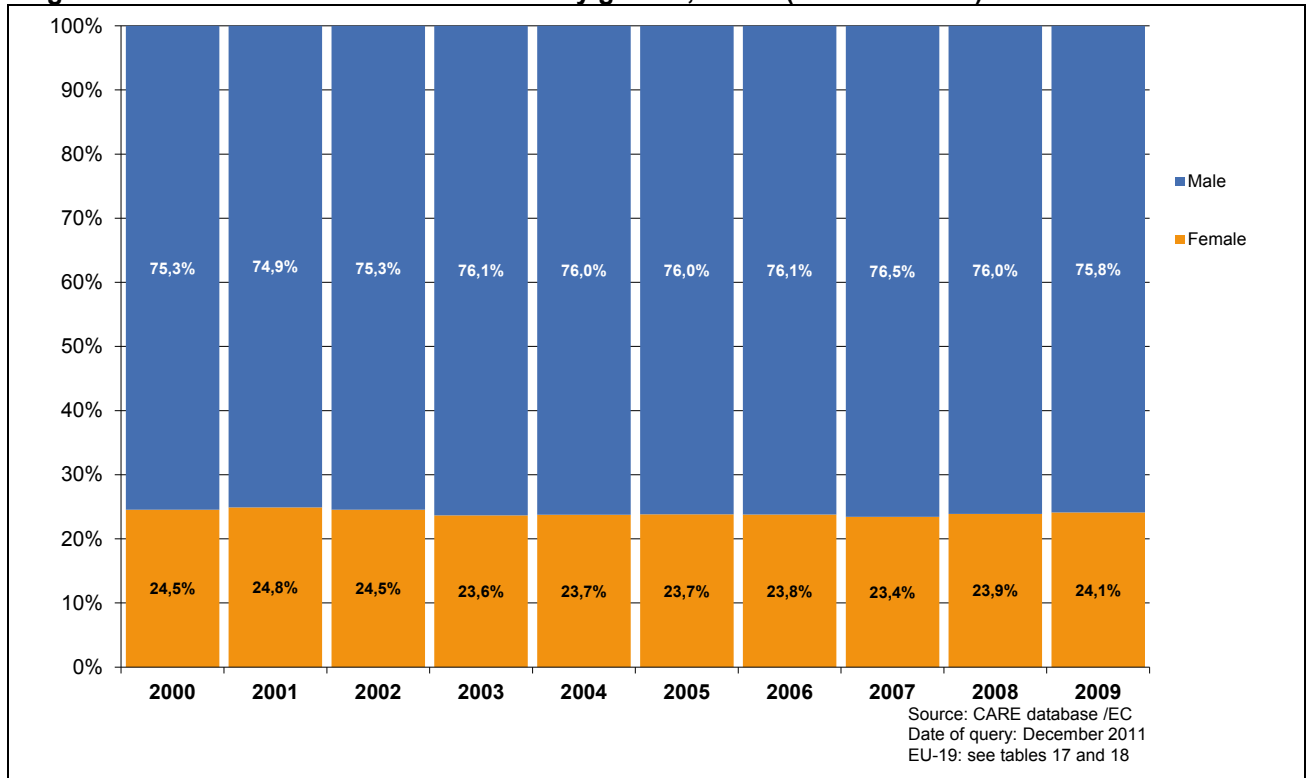


Table 19: Annual number of female fatalities by country, drivers (2000-2009)

	2000	2001	2002	2003	2004	2005	2006	2007	2008	2009
BE	184	188	155	153	138	136	136	120	105	113
CZ	93	84	89	84	102	69	70	86	74	77
DK	66	56	60	57	55	38	38	56	58	45
DE	981	928	917	864	727	736	664	669	591	530
IE	38	33	35	26	42	45	41	29	36	
EL	70	65	56	50	65	65	53	64	64	44
ES	303	333	330	337	295	242	253	238	176	190
FR	880	970	842	642	655	586	527	507	451	473
IT	543	663	459	457	410	397	402	352	337	313
LU	6	4	6	4	6	10	3	4	6	3
NL	184	148	142	151	138	132	141	112	113	101
AT	100	112	105	115	94	96	96	69	81	63
PL		251	266	277	263	250	262	295	299	267
PT	86	70	83	70	56	67	44	46	63	46
RO	45	37	43	45	44	61	60	62	77	81
SI	24	21	21	18	21	26	15	24	13	10
FI	53	63	49	40	44	43	42	46	46	30
SE	67	52	56	63	41	51	52	55	55	
UK	286	305	299	343	317	288	288	269	260	220
EU-19	4.260	4.383	4.013	3.796	3.513	3.338	3.187	3.103	2.905	2.697
Yearly Change		2,9	-8,4	-5,4	-7,5	-5,0	-4,5	-2,6	-6,4	-7,2
EE						8	13	11	11	5
CY					5					
LV					18	16	11	14	15	14
HU				69	70	88	94	86	62	59
MT									2	2
SK						28	30	32	24	16
EU-25	4.260	4.383	4.013	3.865	3.605	3.478	3.335	3.246	3.019	2.793
CH					41				32	42
IS			2	1	1	3	5	1	2	0

Table 20: Annual number of male fatalities by country, drivers (2000-2009)

	2000	2001	2002	2003	2004	2005	2006	2007	2008	2009
BE	883	866	804	775	765	671	668	711	586	588
CZ	684	612	702	733	675	642	569	666	555	466
DK	229	243	250	243	214	195	162	224	230	153
DE	4.101	3.904	3.812	3.788	3.271	3.115	2.924	2.848	2.527	2.408
IE	189	182	166	166	167	184	160	155	134	
EL	1.122	1.064	921	958	951	986	1.021	945	956	919
ES	3.007	2.864	2.789	2.834	2.552	2.486	2.308	2.180	1.751	1.500
FR	4.613	4.651	4.398	3.586	3.237	3.113	2.799	2.732	2.526	2.566
IT	3.991	3.852	3.821	3.815	3.645	3.483	3.340	3.284	2.962	2.621
LU	45	40	35	32	26	24	24	24	21	24
NL	609	600	587	616	458	433	417	406	417	387
AT	561	547	519	509	512	448	405	405	399	357
PL		2.135	2.275	2.216	2.282	2.216	2.030	2.144	2.070	1.898
PT	954	885	865	883	715	693	578	555	496	466
RO	748	736	720	739	764	876	848	937	1.152	972
SI	167	154	142	135	156	139	156	172	133	100
FI	205	219	231	207	181	217	191	217	182	153
SE	331	318	322	297	271	248	253	266	231	
UK	1.716	1.739	1.751	1.806	1.684	1.714	1.665	1.550	1.333	1.163
EU-19	26.290	25.611	25.110	24.338	22.526	21.883	20.518	20.421	18.661	17.106
Yearly Change		-2,6	-2,0	-3,1	-7,4	-2,8	-6,3	-0,5	-8,6	-8,3
EE						73	87	93	48	44
CY					73					
LV					169	147	161	162	115	92
HU				624	630	607	628	601	480	430
MT						5	6	8	6	8
SK						259	236	289	258	162
EU-25	26.291	25.612	25.110	24.962	23.398	22.977	21.636	21.574	19.565	17.844
CH					302				218	204
IS			10	10	12	11	14	12	8	9

Table 21: Annual number of female fatalities by country, passengers (2000-2009)

	2000	2001	2002	2003	2004	2005	2006	2007	2008	2009
BE	117	128	127	88	73	81	60	49	74	66
CZ	147	146	160	149	140	132	94	103	97	74
DK	42	38	40	48	29	28	20	23	24	22
DE	673	598	589	548	485	415	407	350	348	327
IE	36	41	37	31	32	36	34	28	22	
EL	236	208	193	150	172	197	142	171	141	135
ES	738	706	684	658	589	473	436	364	324	260
FR	786	794	680	538	466	462	403	374	322	356
IT	685	707	674	659	573	532	562	396	370	322
LU	6	10	4	3	4	5	2	1		4
NL	76	61	63	72	65	47	47	46	38	42
AT	72	90	96	79	65	57	49	56	45	53
PL		513	517	549	494	486	469	488	469	384
PT	150	172	156	137	120	103	76	92	95	79
RO	199	217	219	192	245	319	271	278	311	283
SI	31	19	31	24	21	25	17	19	12	19
FI	45	48	43	42	49	37	29	41	17	30
SE	50	68	55	52	49	41	38	46	31	
UK	321	291	333	301	284	270	286	254	203	191
EU-19	4.923	4.855	4.701	4.320	3.955	3.746	3.442	3.179	2.943	2.700
Yearly Change		-1,4	-3,2	-8,1	-8,5	-5,2	-8,1	-7,6	-7,4	-8,3
EE						18	12	18	8	11
CY					14					
LV					60	47	32	34	24	13
HU				164	125	127	108	126	85	70
MT										3
SK						64	44	54	41	40
EU-25	4.923	4.855	4.701	4.484	4.152	4.002	3.638	3.411	3.101	2.837
CH					32				27	13
IS			11	6	4	2	3	1	0	2

Table 22: Annual number of male fatalities by country, passengers (2000-2009)

	2000	2001	2002	2003	2004	2005	2006	2007	2008	2009
BE	142	146	89	81	81	88	79	81	72	69
CZ	200	169	171	191	184	145	128	134	112	97
DK	62	44	50	33	28	25	26	34	36	31
DE	752	646	650	599	518	406	383	385	357	296
IE	59	62	39	40	54	51	54	43	34	
EL	230	199	181	188	187	174	170	172	144	153
ES	757	727	722	730	583	534	484	441	343	289
FR	961	923	869	666	591	522	445	446	428	382
IT	848	834	798	754	671	601	601	463	410	314
LU	8	4	11	7	2	6	4	9	2	5
NL	104	76	92	85	67	55	59	59	53	50
AT	103	92	76	96	75	70	70	53	52	59
PL		762	772	711	676	722	673	704	711	555
PT	278	205	231	176	170	161	107	117	74	100
RO	363	371	328	309	331	391	374	409	458	443
SI	32	41	33	27	41	30	38	44	16	17
FI	31	41	52	31	52	37	25	28	46	36
SE	70	57	69	62	52	45	43	43	31	
UK	368	399	386	406	389	365	362	323	257	239
EU-19	6.130	5.798	5.619	5.192	4.752	4.428	4.125	3.988	3.636	3.200
Yearly Change		-5,4	-3,1	-7,6	-8,5	-6,8	-6,8	-3,3	-8,9	-12,0
EE						18	24	29	22	15
CY					7					
LV					72	58	50	50	57	29
HU				170	144	165	176	131	118	76
MT						6	1	1		
SK						81	90	69	79	53
EU-25	b	5.798	5.619	5.362	4.975	4.755	4.466	4.268	3.911	3.373
CH					40				21	30
IS			5	3	3	2	5	0	2	4

Table 23: Annual number of female fatalities by country, pedestrians (2000-2009)

	2000	2001	2002	2003	2004	2005	2006	2007	2008	2009
BE	65	68	59	58	39	43	52	46	41	53
CZ	128	108	103	92	84	97	61	86	88	74
DK	43	23	19	17	14	14	29	26	25	24
DE	411	397	383	345	359	294	300	290	290	245
IE	30	29	29	22	28	21	22	28	17	
EL	134	143	102	89	127	93	95	103	99	71
ES	297	285	248	251	239	243	211	221	176	171
FR	284	293	347	256	227	266	225	237	240	212
IT	403	380	445	292	257	311	312	256	253	291
LU	5	3	2	3	6	2	5	2	2	6
NL	34	37	41	39	21	31	24	34	28	32
AT	74	49	75	57	56	42	45	36	44	39
PL		558	580	498	534	507	501	550	553	458
PT	111	121	108	96	89	63	62	50	51	49
RO	369	325	334	267	314	308	330	400	377	330
SI	18	11	15	12	12	20	10	16	11	10
FI	35	26	22	25	25	16	24	14	16	11
SE	36	29	26	23	26	19	21	25	24	
UK	307	268	283	276	228	258	232	229	219	186
EU-19	3.342	3.153	3.221	2.718	2.685	2.648	2.561	2.649	2.554	2.303
Yearly Change		-5,7	2,2	-15,6	-1,2	-1,4	-3,3	3,4	-3,7	-9,8
EE						16	25	16	15	10
CY					2					
LV					63	55	54	52	38	15
HU				85	107	93	91	102	90	78
MT						4		1	1	2
SK						52	60	70	46	32
EU-25	3.342	3.153	3.221	2.803	2.857	2.868	2.791	2.890	2.742	2.440
CH					42				31	25
IS			1	1	2	1	3	0	0	1

Table 24: Annual number of male fatalities by country, pedestrians (2000-2009)

	2000	2001	2002	2003	2004	2005	2006	2007	2008	2009
BE	77	90	68	55	62	64	70	57	58	48
CZ	234	214	205	198	197	201	141	146	150	95
DK	56	26	44	32	29	30	31	42	33	28
DE	581	502	490	467	475	392	410	405	363	346
IE	54	60	55	40	38	51	48	52	31	
EL	238	195	175	167	165	136	170	151	144	129
ES	559	532	497	499	416	426	400	363	319	298
FR	554	530	519	370	354	369	310	324	308	284
IT	579	652	781	579	553	475	446	371	393	376
LU	6	8	4	4	6		5	5	4	6
NL	71	67	55	56	43	52	42	52	28	31
AT	66	68	85	75	76	55	65	72	58	62
PL		1.305	1.401	1.372	1.437	1.237	1.290	1.393	1.318	1.003
PT	271	217	229	185	144	152	93	106	104	99
RO	741	763	767	677	745	670	704	713	690	686
SI	42	31	26	26	23	17	26	15	28	14
FI	27	36	18	34	24	29	25	34	37	19
SE	37	58	32	32	41	31	34	33	21	
UK	582	590	525	526	466	441	465	434	372	338
EU-19	6.080	5.944	5.976	5.394	5.294	4.828	4.775	4.768	4.459	3.914
Yearly Change		-2,2	0,5	-9,7	-1,9	-8,8	-1,1	-0,1	-6,5	-12,2
EE						33	37	21	26	12
CY					16					
LV					134	119	98	105	67	45
HU				214	219	191	204	184	159	106
MT						2	4	2		2
SK						122	154	147	158	81
EU-25	6.080	5.944	5.976	5.608	5.663	5.295	5.272	5.227	4.869	4.159
CH					53				28	35
IS				2	1	0	1	1	0	1

4 Fatalities 2009

4.1 People involved

4.1.1 Age and gender of persons

Table 25: Number of total fatalities by age group by country, 2009

	-	0-14	15-17	18-24	25-49	50-64	65+	Total
BE	92	16	21	147	355	150	163	944
CZ	1	16	13	133	405	166	167	901
DK		10	17	53	121	41	61	303
DE		90	133	796	1.351	678	1.104	4.152
EE	1	4	2	21	39	13	18	98
EL	31	43	37	242	617	211	275	1.456
ES	33	61	70	357	1.273	412	507	2.713
FR		122	189	901	1.653	612	796	4.273
IT	90	71	121	579	1.596	669	1.111	4.237
LV		7	4	31	115	48	49	254
LU		6		10	12	11	9	48
HU		22	16	81	353	184	166	822
MT		1		2	5	2	5	15
NL		23	26	126	191	91	187	644
AT		15	29	99	229	102	159	633
PL	43	128	120	833	1.668	970	810	4.572
PT	2	23	19	109	331	150	205	839
RO	7	125	58	416	1.000	597	594	2.797
SI		2	4	30	61	35	39	171
SK	64	9	5	53	122	80	51	384
FI		6	23	51	84	46	69	279
UK		69	126	467	913	330	432	2.337
EU-22	364	869	1.033	5.537	12.494	5.598	6.977	32.872
%	1,1%	2,6%	3,1%	16,8%	38,0%	17,0%	21,2%	100,0%
CH		21	5	68	97	68	90	349
IS			1	1	8	4	3	17

Table 26: Number of female fatalities by age group by country, 2009

	-	0-14	15-17	18-24	25-49	50-64	65+	Total
BE	45	7	6	25	56	35	60	234
CZ			3	26	83	43	70	225
DK		5	4	16	25	13	28	91
DE		32	36	165	267	146	456	1.102
EE	1	1	1	3	10	2	8	26
EL	8	21	4	31	78	35	73	250
ES	6	25	15	79	223	97	175	620
FR		55	46	145	272	178	345	1.041
IT	29	30	22	113	244	141	347	926
LV			1	4	21	8	8	42
LU				1	4	3	5	13
HU		10	7	15	61	50	64	207
MT		1		1	1	1	1	5
NL		10	12	25	38	23	67	175
AT		6	6	18	43	27	55	155
PL	6	49	48	140	292	235	339	1.109
PT		14	6	23	46	29	57	175
RO		39	20	109	181	125	220	694
SI		1	1	7	9	6	15	39
SK	12	3	2	2	22	23	24	88
FI		2	6	6	22	13	22	71
UK		27	29	88	174	85	194	597
EU-22	107	338	275	1.042	2.172	1.318	2.633	7.885
%	1,4%	4,3%	3,5%	13,2%	27,5%	16,7%	33,4%	100,0%
CH		5	3	10	17	13	32	80
IS				1	1	1		3

Table 27: Number of male fatalities by age group by country, 2009

	-	0-14	15-17	18-24	25-49	50-64	65+	Total
BE	42	9	15	122	299	115	103	705
CZ	1		9	107	322	123	97	659
DK		5	13	37	96	28	33	212
DE		58	97	631	1.084	532	648	3.050
EE		2	1	18	29	11	10	71
EL	18	22	33	211	539	176	202	1.201
ES	24	37	56	277	1.048	315	330	2.087
FR		67	143	756	1.381	434	451	3.232
IT	61	41	99	466	1.352	528	764	3.311
LV		1	1	21	89	34	20	166
LU		6		9	8	8	4	35
HU		12	9	66	292	134	99	612
MT				1	4	1	4	10
NL		13	14	101	153	68	120	469
AT		9	23	81	186	75	104	478
PL	30	79	72	693	1.376	735	471	3.456
PT	2	9	14	87	285	121	148	666
RO	7	86	38	307	819	472	373	2.102
SI		1	3	23	52	29	24	132
SK	52	6	3	51	100	57	27	296
FI		4	17	45	62	33	47	208
UK		42	97	379	739	245	238	1.740
EU-22	237	509	757	4.489	10.315	4.274	4.317	24.898
%	1,0%	2,0%	3,0%	18,0%	41,4%	17,2%	17,3%	100,0%
CH		16	2	58	80	55	58	269
IS			1		7	3	3	14

4.2 Modes of transport

4.2.1 Mode of transport by age of persons

Table 28: Number of pedestrian fatalities by age group by country, 2009

	-	0-14	15-17	18-24	25-49	50-64	65+	Total
BE		5	4	6	18	21	47	101
CZ		7	1	10	52	41	65	176
DK		3	3	1	18	8	19	52
DE		23	15	46	97	75	335	591
EE	1	3			7	4	8	23
EL	15	10	1	7	40	31	98	202
ES	15	22	5	16	125	82	206	471
FR		24	10	26	94	78	264	496
IT	23	16	2	30	113	102	381	667
LV		4	2	6	30	14	26	82
LU		3			2	2	5	12
HU		4	5	6	54	49	68	186
MT					1	1	2	4
NL		7	3	6	13	7	27	63
AT		4	2	8	23	15	49	101
PL	35	41	28	81	379	435	468	1.467
PT	2	9		2	35	26	73	147
RO	7	65	15	31	229	266	403	1.016
SI					4	7	13	24
SK	18	7		6	23	34	25	113
FI		1		3	3	8	15	30
UK		34	20	61	152	69	188	524
EU-22	116	292	116	352	1.512	1.375	2.785	6.548
%	1,8%	4,5%	1,8%	5,4%	23,1%	21,0%	42,5%	100,0%
CH		8	1	5	7	8	31	60
IS					2			2

Table 29: Number of pedal cyclist fatalities by age group by country, 2009

	-	0-14	15-17	18-24	25-49	50-64	65+	Total
BE	1	5	6	4	16	21	36	89
CZ		1	1	3	29	23	27	84
DK		2	2		6	7	8	25
DE		24	12	16	87	92	231	462
EE				1	2	2	2	7
EL		3	1	1	4	4	2	15
ES	0	2	6	2	21	13	12	56
FR		13	5	7	39	47	51	162
IT	6	10	2	6	43	65	163	295
LV			1	1	13	6	5	26
LU		1				1		2
HU		2		4	27	35	35	103
MT								0
NL		15	6	11	13	23	70	138
AT		2			6	11	20	39
PL	3	19	7	24	85	87	146	371
PT			1	2	11	9	5	28
RO		14	4	3	37	49	50	157
SI		1			6	8	3	18
SK	3	1			5	8	5	22
FI		1		1	3	4	11	20
UK		11	5	8	41	20	19	104
EU-22	13	127	59	94	494	535	901	2.223
%	0,6%	5,7%	2,7%	4,2%	22,2%	24,1%	40,5%	100,0%
CH		8	1	5	7	8	31	60
IS								0

Table 30: Number of moped rider and passenger fatalities by age group by country, 2009

	-	0-14	15-17	18-24	25-49	50-64	65+	Total
BE			6	3	9	6	1	25
CZ					3	4	2	9
DK			3	3	4	2	3	15
DE		2	16	16	18	23	24	99
EE						1	2	3
EL	1			4	10	5	8	28
ES	1	2	30	36	48	20	19	156
FR		7	88	85	85	19	15	299
IT	3	8	51	27	56	20	47	212
LV					1			1
HU		2	1	1	6	6	7	23
NL			12	7	9	4	15	47
AT			14	5	4	3	4	30
PL		4	12	10	21	8	13	68
PT			2	1	19	8	27	57
RO			5	21	53	23	16	118
SI					2		1	3
FI		1	7		2		1	11
UK			4	5	2	2	3	16
EU-19	5	26	251	224	352	154	208	1.220
%	0,4%	2,1%	20,5%	18,3%	28,8%	12,7%	17,1%	100,0%
CH			1	2	1	1	3	8

Table 31: Number of motorcycle rider and passenger fatalities by age group by country, 2009

	-	0-14	15-17	18-24	25-49	50-64	65+	Total
BE	2		1	16	95	22	1	137
CZ	1		3	18	55	7	1	85
DK				2	21	4		27
DE			23	116	375	114	22	650
EE					2			2
EL	7	4	24	107	214	34	15	405
ES	4	0	2	40	341	48	2	437
FR		1	18	198	568	107	16	908
IT	7	3	38	168	649	143	29	1.037
LV				2	8			10
LU				2	3	2		7
HU				13	56	3	1	73
MT					2			2
NL				17	37	11	3	68
AT				14	52	15	6	87
PL	1	1	6	115	159	5	3	290
PT			1	25	78	8	3	115
RO			5	34	34		1	74
SI				4	21	3		28
SK	7		3	7	13	3	1	34
FI			3	2	14	7	1	27
UK			13	74	295	81	9	472
EU-22	29	9	140	974	3.092	617	114	4.975
%	0,6%	0,2%	2,8%	19,6%	62,2%	12,4%	2,3%	100,0%
CH				14	29	27	8	78
IS					2			2

Table 32: Number of car driver and passenger fatalities by age group by country, 2009

	-	0-14	15-17	18-24	25-49	50-64	65+	Total
BE	73	4	4	102	159	57	65	464
CZ		8	8	99	238	75	69	497
DK		5	9	44	65	12	29	164
DE		37	65	584	675	305	444	2.110
EE		1	2	14	26	5	6	54
EL	7	23	9	116	313	112	100	680
ES	12	30	22	242	559	182	213	1.260
FR		70	62	547	752	310	421	2.162
IT	41	31	27	337	634	291	432	1.793
LV		3	1	21	52	24	14	115
LU		2		8	6	6	4	26
HU		12	10	52	187	79	46	386
MT		1		2	2	1	3	9
NL		1	5	78	104	36	64	288
AT		6	11	66	127	48	67	325
PL	3	57	64	586	925	380	164	2.179
PT		6	6	52	119	57	62	302
RO		36	29	301	522	192	88	1.168
SI			2	20	17	10	10	59
SK	33	1	2	38	64	26	18	182
FI		3	11	44	51	20	36	165
UK		23	82	308	389	129	192	1.123
EU-22	169	360	431	3.661	5.986	2.357	2.547	15.511
%	1,1%	2,3%	2,8%	23,6%	38,6%	15,2%	16,4%	100,0%
CH		5	3	42	41	21	24	136
IS			1	1	2	2	3	9

4.2.2 Mode of transport by type of area

Figure 18: Fatalities by type of area and mode of transport (EU-23), 2009

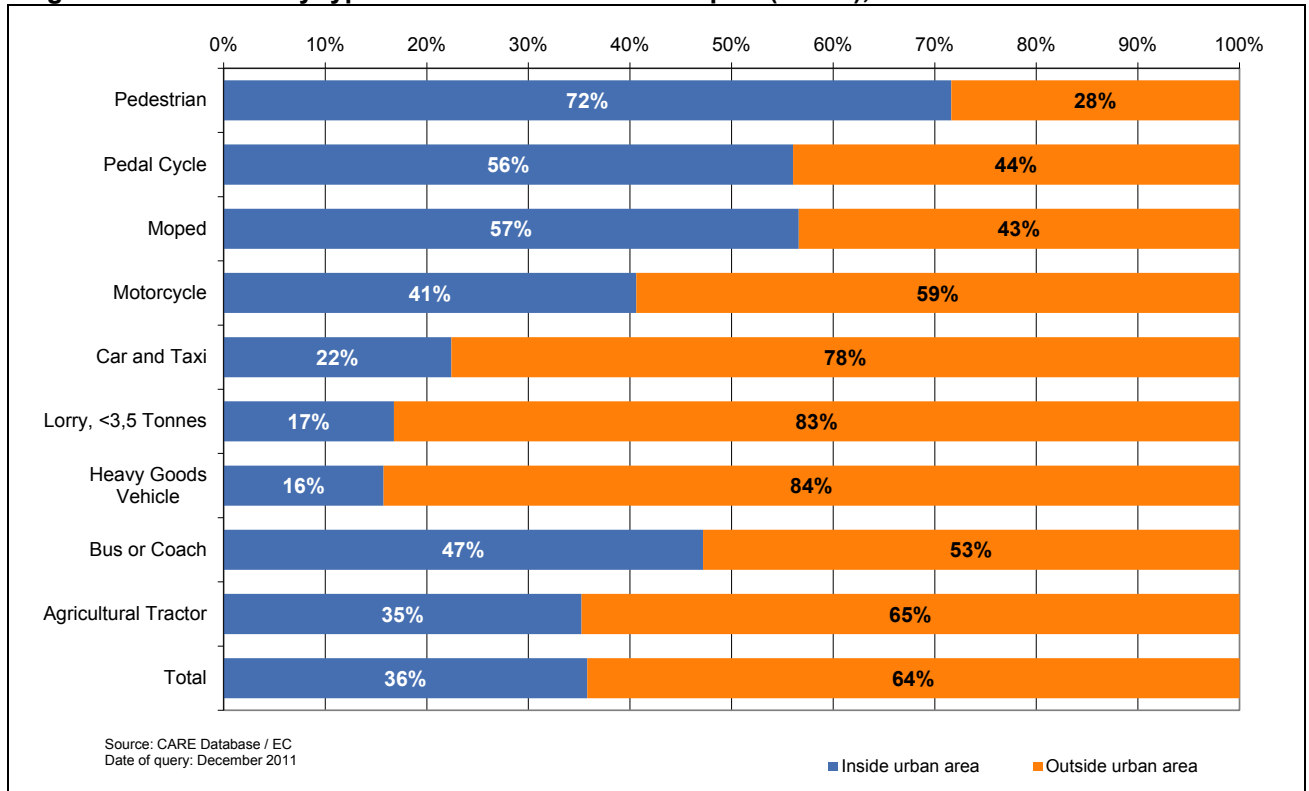


Table 33: Number of fatalities by mode of transport (in which the fatality was travelling) and type of area by country (part 1), 2009

	agricultural tractor		bus or coach		car + taxi		heavy goods vehicle		lorry, under 3.5 tonnes	
	inside urban area	outside urban area	inside urban area	outside urban area	inside urban area	outside urban area	inside urban area	outside urban area	inside urban area	outside urban area
BE	1			1	98	366	1	19	5	38
CZ	1		1	2	113	384	5	15	3	22
DK					31	133		3	3	13
DE	5	13	6	5	292	1.818	5	74	9	76
EE				2	6	48		6		
EL	9	22			178	502	3	4	17	58
ES	4	18	1	20	101	1.159	0	69	9	161
FR		10	1	4	314	1.848	3	51	19	125
IT	6	14	1	1	458	1.335	1	34	9	23
LV			1	1	21	94		5		4
LU					1	25				
HU			2	1	80	306	2	10	4	24
MT					9					
NL	1				42	245	1	3	5	19
AT	2	11	1	1	35	290	1	8	1	12
PL	12	11	6	13	712	1.467	46	90		
PT	18	13	2	3	96	205	5	24	17	51
RO	5	4	22	14	492	676				
SI	3	2		1	16	43			1	5
SK			12		42	140	5	12	1	
FI		4		1	29	136		6	1	9
UK	1	3	11	5	311	812	2	13	5	35
EU-22	68	125	67	75	3.477	12.032	80	446	109	675
%	35,2%	64,8%	47,2%	52,8%	22,4%	77,6%	15,2%	84,8%	13,9%	86,1%
CH		4			33	103	1	1	1	2
IS		1			3	6	1			1

Table 34: Number of fatalities by mode of transport (in which the fatality was travelling) and type of area by country (part 2), 2009

	Moped		motor cycle		Pedal cycle		pedestrian		Total		
	inside urban area	outside urban area	inside urban area	outside urban area	inside urban area	outside urban area	inside urban area	outside urban area	inside urban area	outside urban area	Total
BE	18	7	35	102	29	60	65	36	252	629	881
CZ	4	5	27	58	48	36	127	49	329	571	900
DK	8	7	2	25	13	12	35	17	92	210	302
DE	47	52	143	507	259	203	438	153	1.204	2.901	4.105
EE	1	2	1	1		7	11	12	19	78	97
EL	20	8	258	147	7	8	148	54	640	803	1.443
ES	68	88	113	324	13	44	269	201	578	2.084	2.662
FR	138	161	333	575	74	88	357	139	1.239	3.001	4.240
IT	131	81	533	504	189	106	535	132	1.863	2.230	4.093
LV		1	7	3	9	17	30	52	68	177	245
LU			1	6	1	1	7	3	10	35	45
HU	19	4	21	52	55	48	115	71	298	516	814
MT			2				4		15	0	15
NL	25	22	16	51	84	54	46	17	220	411	631
AT	13	17	23	64	21	18	71	30	168	451	619
PL	38	30	167	123	207	164	970	497	2.158	2.395	4.553
PT	38	21	73	42	14	15	105	43	368	417	785
RO	105	17	55	19	120	37	842	174	1.641	941	2.582
SI	3		7	21	10	8	16	8	56	88	144
SK			19	15	16	6	79	34	174	207	381
FI	5	6	7	20	14	6	20	10	76	198	274
UK	13	3	177	295	64	40	399	125	983	1.331	2.314
EU-22	694	532	2.020	2.954	1.247	978	4.689	1.857	12.451	19.674	32.125
%	56,6%	43,4%	40,6%	59,4%	56,0%	44,0%	71,6%	28,4%	38,8%	61,2%	100,0%
CH	3	5	21	57	37	17	39	21	135	210	345
IS			1	1			1	1	6	10	16

4.3 Accident characteristics

4.3.1 Various periods of time (month, day of week, hour of day)

Figure 19: Number of fatalities by month (EU-22), 2009

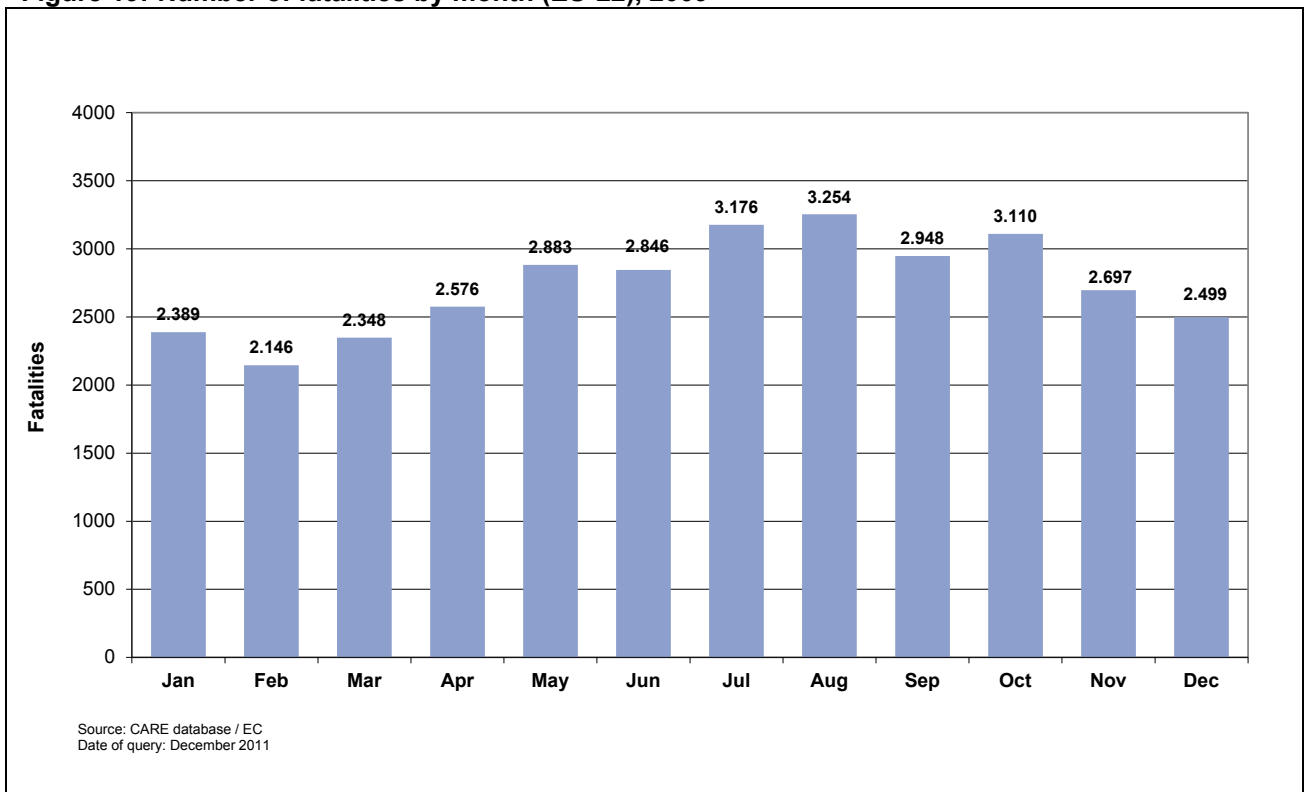


Figure 20: Distribution of Driver and pedestrian (person class) by month (EU-22), 2009



Table 35: Number of fatalities by month by country (January to June), 2009

	January	February	March	April	May	June
BE	71	57	80	86	79	88
CZ	82	58	49	65	68	85
DK	24	22	28	36	29	22
DE	279	249	284	380	399	375
EE	10	10	6	5	6	2
EL	98	108	107	114	120	140
ES	222	209	233	202	236	244
FR	288	299	294	327	386	403
IT	253	285	319	296	413	372
LV	35	9	20	12	24	13
LU	2	1	5	4	7	6
HU	59	50	71	71	73	79
MT	1			1	1	
NL	36	53	49	51	68	54
AT	58	34	34	47	57	57
PL	341	263	289	339	341	371
PT	68	48	59	67	64	64
RO	189	147	179	189	229	200
SI	11	13	12	20	22	14
SK	32	34	22	36	35	38
FI	22	13	19	19	31	32
UK	208	184	189	209	195	187
EU-22	2.389	2.146	2.348	2.576	2.883	2.846
%	7,3%	6,5%	7,1%	7,8%	8,8%	8,7%
CH	18	18	14	26	40	35
IS	3		1		3	

Table 36: Number of fatalities by month by country (July to December), 2009

	July	August	September	October	November	December	Total
BE	93	88	82	71	84	65	944
CZ	82	85	82	102	67	76	901
DK	30	17	34	16	23	22	303
DE	360	386	392	383	362	303	4.152
EE	8	13	16	6	7	9	98
EL	144	137	141	154	94	99	1.456
ES	257	273	205	223	193	216	2.713
FR	396	412	384	429	349	306	4.273
IT	498	417	360	386	330	308	4.237
LV	18	35	26	20	19	23	254
LU	2	4	3	6	6	2	48
HU	80	82	48	83	52	74	822
MT		3	1	3	2	3	15
NL	50	54	63	63	55	48	644
AT	59	75	66	49	58	39	633
PL	477	451	409	481	427	383	4.572
PT	90	84	86	79	66	65	840
RO	254	324	284	301	275	226	2.797
SI	11	16	20	14	9	9	171
SK	35	36	27	35	27	27	384
FI	26	28	31	24	11	23	279
UK	206	234	188	183	181	173	2.337
EU-22	3.176	3.254	2.948	3.111	2.697	2.499	32.873
%	9,7%	9,9%	9,0%	9,5%	8,2%	7,6%	100,0%
CH	35	39	40	24	37	23	349
IS	1	2	1	3		3	17

Table 37: Number of driver fatalities by month by country (January to June), 2009

	January	February	March	April	May	June
BE	51	33	58	75	58	65
CZ	48	32	27	42	50	56
DK	15	10	19	20	22	11
DE	170	172	207	275	297	273
EE	6	4	3	1	4	2
EL	62	60	85	79	88	89
ES	132	127	144	126	153	155
FR	206	206	215	234	294	295
IT	160	179	221	219	295	271
LV	16	5	4	8	9	7
LU	1		2	2	4	5
HU	34	25	46	45	54	53
MT				1	1	
NL	28	39	37	41	51	44
AT	31	11	21	35	50	44
PL	130	113	119	176	202	207
PT	38	26	44	42	49	46
RO	66	53	69	66	108	83
SI	5	5	8	12	14	11
SK	7	12	8	21	26	16
FI	14	4	13	18	20	19
UK	103	107	108	129	134	129
EU-22	1.323	1.223	1.458	1.667	1.983	1.881
%	6,6%	6,1%	7,2%	8,3%	9,8%	9,3%
CH	11	11	11	21	30	28
IS	1		1		2	

Table 38: Number of driver fatalities by month by country (June to December), 2009

	July	August	September	October	November	December	Total
BE	66	69	66	55	57	48	701
CZ	48	54	53	65	40	29	544
DK	22	14	23	12	16	14	198
DE	284	300	278	262	235	185	2.938
EE	4	7	9	2	3	4	49
EL	88	94	92	102	64	61	964
ES	152	175	131	143	125	128	1.691
FR	279	288	286	316	230	190	3.039
IT	377	308	257	263	196	188	2.934
LV	13	21	10	7	7	8	115
LU	2	3	2	1	5		27
HU	47	49	29	45	28	35	490
MT		1	1	3		1	8
NL	45	43	47	46	37	30	488
AT	38	61	43	33	30	23	420
PL	248	231	219	204	164	153	2.166
PT	54	54	42	47	39	33	514
RO	107	132	103	108	91	67	1.053
SI	9	9	18	8	4	7	110
SK	22	25	12	13	11	5	178
FI	19	21	21	20	4	10	183
UK	128	141	109	111	101	83	1.383
EU-22	2.052	2.100	1.851	1.866	1.487	1.302	20.193
%	10,2%	10,4%	9,2%	9,2%	7,4%	6,4%	100,0%
CH	28	30	29	15	22	10	246
IS		1		2		2	9

Table 39: Number of passenger fatalities by month by country (January to June), 2009

	January	February	March	April	May	June
BE	12	14	12	6	16	18
CZ	15	14	9	14	7	19
DK		7	8	13	3	5
DE	54	29	37	57	57	68
EE	3	4		3	1	
EL	16	26	14	24	22	29
ES	46	36	53	39	47	47
FR	43	42	50	66	54	63
IT	42	51	54	44	55	53
LV	9	1	10	1	9	3
LU			2	1	1	1
HU	10	13	9	11	9	13
MT						
NL	3	6	5	6	12	6
AT	14	10	6	6	6	10
PL	80	61	45	67	73	87
PT	10	9	9	11	10	11
RO	42	41	49	49	62	52
SI	2	6	3	5	6	2
SK	6	15	4	9	3	15
FI	5	4	5	1	10	9
UK	46	34	24	42	32	24
EU-22	458	423	408	475	495	535
%	7,5%	6,9%	6,7%	7,8%	8,1%	8,7%
CH	2	1		2	7	3
IS					1	

Table 40: Number of passenger fatalities by month by country (July to December), 2009

	July	August	September	October	November	December	Total
BE	14	12	9	10	7	10	140
CZ	24	17	19	19	10	13	180
DK	5	1	4	2	2	3	53
DE	41	55	70	62	55	38	623
EE	2	6	4		1	2	26
EL	42	24	34	30	15	14	290
ES	60	68	41	39	30	46	552
FR	78	88	68	72	63	51	738
IT	70	64	44	56	53	50	636
LV	1	6	4	3	4	6	57
LU		1		2		1	9
HU	22	19	7	19	3	11	146
MT		2				1	3
NL	3	7	9	12	11	12	92
AT	13	11	11	11	10	4	112
PL	140	115	71	87	55	58	939
PT	23	22	26	16	14	17	178
RO	74	94	76	81	54	54	728
SI	1	4	2	3	2		36
SK	10	8	4	10	3	6	93
FI	6	6	8		5	7	66
UK	41	54	32	30	33	38	430
EU-22	670	684	543	564	430	442	6.127
%	10,9%	11,2%	8,9%	9,2%	7,0%	7,2%	100,0%
CH	5	6	2	6	8	1	43
IS	1	1	1	1		1	6

Table 41: Number of pedestrian fatalities by month by country (January to June), 2009

	January	February	March	April	May	June
BE	8	9	10	5	5	5
CZ	19	12	13	9	10	10
DK	9	5	1	3	4	6
DE	55	48	40	48	45	34
EE	1	2	3	1	1	
EL	20	22	8	11	10	22
ES	44	45	36	36	36	42
FR	39	51	29	27	38	45
IT	51	55	44	33	63	48
LV	10	3	6	3	6	3
LU	1	1	1	1	2	
HU	15	12	16	15	10	13
MT	1					
NL	5	8	7	4	5	4
AT	13	13	7	6	1	3
PL	131	89	125	96	66	77
PT	21	13	6	14	5	7
RO	81	54	61	73	59	65
SI	4	2	1	3	2	1
SK	19	7	10	6	6	7
FI	3	5	1		1	4
UK	59	43	57	38	29	34
EU-22	609	499	482	432	404	430
%	9,3%	7,6%	7,4%	6,6%	6,2%	6,6%
CH	5	6	3	3	3	4
IS	2					

Table 42: Number of pedestrian fatalities by month by country (July to December), 2009

	July	August	September	October	November	December	Total
BE	13	7	7	5	20	7	101
CZ	10	14	10	18	17	34	176
DK	3	2	7	2	5	5	52
DE	35	31	44	59	72	80	591
EE	2		3	4	3	3	23
EL	14	19	15	22	15	24	202
ES	46	30	33	42	38	41	469
FR	39	36	30	41	56	65	496
IT	51	45	59	67	81	70	667
LV	4	8	12	10	8	9	82
LU			1	3	1	1	12
HU	11	14	12	19	21	28	186
MT					2	1	4
NL	2	4	6	5	7	6	63
AT	8	3	12	5	18	12	101
PL	89	105	119	190	208	172	1.467
PT	14	9	17	16	14	15	151
RO	73	98	105	112	130	105	1.016
SI	1	2		3	3	2	24
SK	3	3	11	12	13	16	113
FI	1	1	2	4	2	6	30
UK	37	39	47	42	47	52	524
EU-22	456	470	552	681	781	754	6.550
%	7,0%	7,2%	8,4%	10,4%	11,9%	11,5%	100,0%
CH	2	3	9	3	7	12	60
IS							2

Figure 21: Distribution of fatalities by day of week and person class (EU-23), 2009

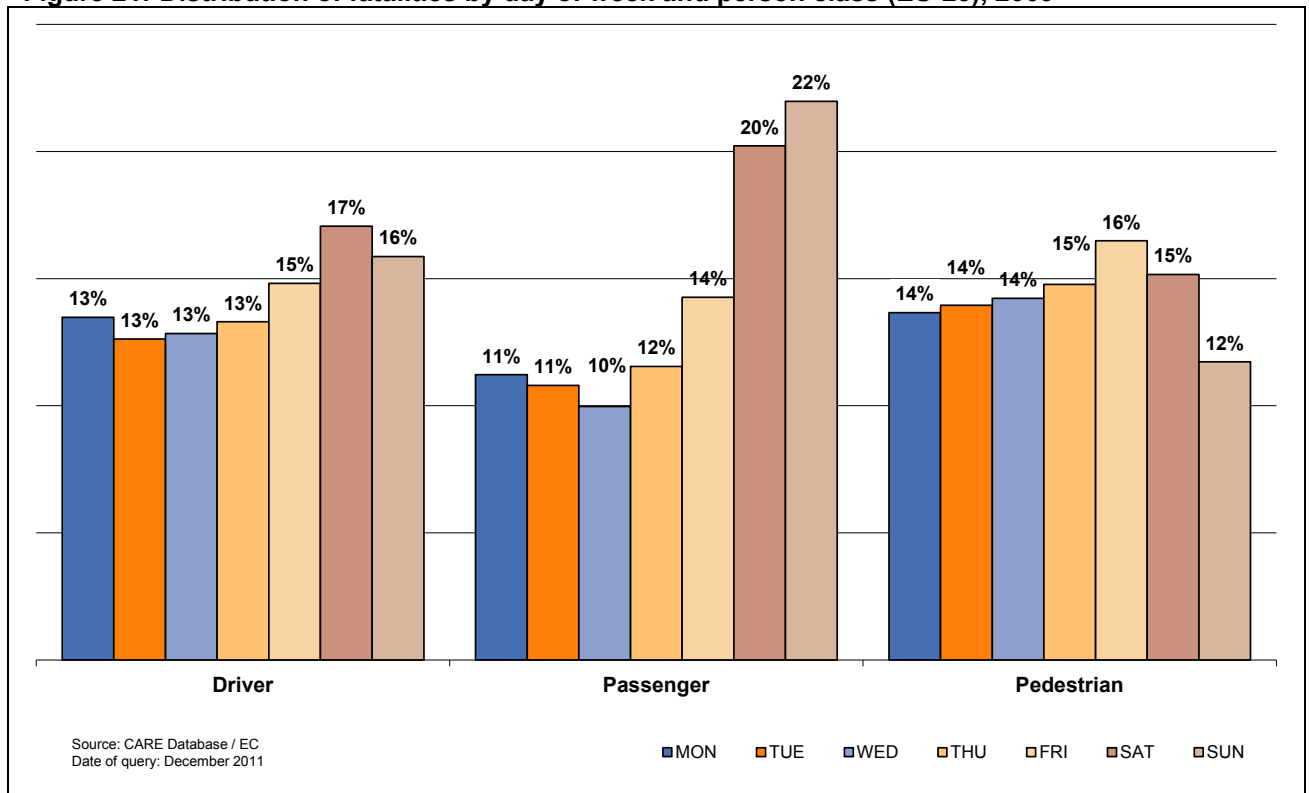


Table 43: Total number of fatalities by day of week by country, 2009

	Monday	Tuesday	Wednesday	Thursday	Friday	Saturday	Sunday	Total
BE	105	109	112	109	138	192	179	944
CZ	117	118	111	128	136	166	125	901
DK	42	41	41	32	45	52	50	303
DE	610	558	506	583	627	655	613	4.152
EE	14	11	11	17	10	19	16	98
EL	192	187	192	174	201	227	283	1.456
ES	345	313	344	355	384	488	485	2.714
FR	529	538	525	555	619	801	706	4.273
IT	568	507	568	582	608	708	696	4.237
LV	33	30	24	38	39	52	38	254
LU	2	6	2	3	10	12	13	48
HU	109	96	92	133	148	135	109	822
MT	1	3	2	1	2	4	2	15
NL	91	74	100	92	97	95	95	644
AT	86	85	77	95	89	86	115	633
PL	606	562	588	598	731	784	703	4.572
PT	125	121	103	105	116	152	119	841
RO	354	370	349	372	448	425	479	2.797
SI	20	28	23	27	20	25	28	171
SK	47	39	52	46	63	83	54	384
FI	36	36	43	29	53	48	34	279
UK	268	296	267	291	365	469	381	2.337
EU-22	4.300	4.128	4.132	4.365	4.949	5.678	5.323	32.875t
%	13,1%	12,6%	12,6%	13,3%	15,1%	17,3%	16,2%	100,0%
CH	51	42	50	42	47	62	55	349
IS	2	2	2	3	6	1	1	17

Table 44: Number of fatalities by day of week by country, 2009 (drivers)

	Monday	Tuesday	Wednesday	Thursday	Friday	Saturday	Sunday	Total
BE	77	89	91	84	100	133	127	701
CZ	72	66	60	80	82	111	73	544
DK	33	25	24	24	32	32	28	198
DE	435	405	369	416	440	453	420	2.938
EE	9	3	7	9	4	10	7	49
EL	128	117	127	109	138	164	181	964
ES	218	192	227	217	243	309	287	1.693
FR	389	393	377	410	448	548	474	3.039
IT	408	361	381	402	414	488	480	2.934
LV	18	12	12	19	19	23	12	115
LU		4	1	1	6	5	10	27
HU	66	60	55	79	81	79	70	490
MT		1	2	1		2	2	8
NL	72	57	77	72	73	67	70	488
AT	60	50	54	65	59	55	77	420
PL	304	270	293	279	339	359	322	2.166
PT	76	75	56	62	68	100	75	512
RO	134	139	131	124	162	163	200	1.053
SI	16	20	12	18	11	15	18	110
SK	19	22	30	14	30	40	23	178
FI	26	25	27	21	36	31	17	183
UK	159	165	176	182	212	260	229	1.383
EU-22	2.719	2.551	2.589	2.688	2.997	3.447	3.202	20.193
%	13,5%	12,6%	12,8%	13,3%	14,8%	17,1%	15,9%	100,0%
CH	34	29	36	32	31	42	42	246
IS	1	1	2	2	2		1	9

Table 45: Number of fatalities by day of week by country 2009 (passengers)

	Monday	Tuesday	Wednesday	Thursday	Friday	Saturday	Sunday	Total
BE	13	11	6	14	18	44	34	140
CZ	24	22	19	22	29	36	28	180
DK	6	3	10	4	9	7	14	53
DE	80	66	67	80	88	114	128	623
EE		4	2	6	3	5	6	26
EL	37	44	29	34	36	40	70	290
ES	68	49	53	68	70	111	133	552
FR	73	65	70	70	103	177	180	738
IT	67	65	60	77	77	138	152	636
LV	7	7	9	6	6	11	11	57
LU		1		2	1	3	2	9
HU	20	15	10	22	33	26	20	146
MT		2				1		3
NL	7	8	17	10	10	21	19	92
AT	12	17	9	15	18	15	26	112
PL	103	87	95	118	139	188	209	939
PT	29	25	23	19	25	29	30	180
RO	74	104	69	85	115	118	163	728
SI	2	4	6	6	7	4	7	36
SK	8	5	10	13	15	29	13	93
FI	7	9	10	3	10	14	13	66
UK	51	50	38	36	57	107	91	430
EU-22	688	663	612	710	869	1.238	1.349	6.129
%	11,2%	10,8%	10,0%	11,6%	14,2%	20,2%	22,0%	100,0%
CH	6	3	5	2	8	10	9	43
IS		1			4	1		6

Table 46: Number of fatalities by day of week by country, 2009 (pedestrians)

	Monday	Tuesday	Wednesday	Thursday	Friday	Saturday	Sunday	Total
BE	14	8	15	11	20	15	18	101
CZ	21	30	32	26	25	19	23	176
DK	3	13	7	4	4	13	8	52
DE	95	87	70	87	99	88	65	591
EE	5	4	2	2	3	4	3	23
EL	27	26	36	31	27	23	32	202
ES	59	72	65	70	72	67	65	470
FR	67	80	78	75	68	76	52	496
IT	93	81	127	103	117	82	64	667
LV	8	11	3	13	14	18	15	82
LU	2	1	1		3	4	1	12
HU	23	21	27	32	34	30	19	186
MT	1				2	1		4
NL	11	9	6	10	14	7	6	63
AT	14	18	14	15	12	16	12	101
PL	199	205	200	201	253	237	172	1.467
PT	21	21	24	24	23	23	14	150
RO	146	127	149	163	171	144	116	1.016
SI	2	4	4	3	2	6	3	24
SK	20	12	12	19	18	14	18	113
FI	3	2	6	5	7	3	4	30
UK	58	81	53	73	96	102	61	524
EU-22	892	913	931	967	1.084	992	771	6.550
%	13,6%	13,9%	14,2%	14,8%	16,5%	15,1%	11,8%	100,0%
CH	11	10	9	8	8	10	4	60
IS	1			1				2

Table 47: Number of fatalities by hour of day by country (00-08), 2009

	00	01	02	03	04	05	06	07	08
BE	34	30	38	26	30	30	33	29	40
CZ	26	25	10	23	14	27	42	34	28
DK	12	6	5	6	4	11	17	11	7
EE	4	1	8	1	2	0	3	2	11
EL	56	39	50	49	44	59	59	59	49
ES	54	63	62	57	55	81	91	113	134
FR	147	123	103	89	100	96	123	196	168
IT	75	160	134	72	90	87	108	127	170
LV	10	1	4	3	4	8	6	12	8
LU	1	1	0	0	0	0	2	5	0
HU	18	26	14	12	23	28	42	34	30
MT	1	0	0	1	1	2	2	0	0
NL	12	20	6	14	11	11	16	26	27
AT	16	28	10	25	13	34	17	18	20
PL	114	103	91	91	100	123	171	163	137
PT	25	9	32	25	25	24	36	34	33
RO	61	62	55	57	54	89	106	129	100
SI	5	1	3	3	6	8	4	7	7
SK	12	6	4	2	7	7	11	10	8
FI	6	7	5	10	13	5	2	5	14
UK	105	79	68	58	43	49	68	90	89
EU-21	794	790	702	624	640	778	959	1.104	1.080
%	2,4%	2,4%	2,1%	1,9%	1,9%	2,4%	2,9%	3,4%	3,3%

Table 48: Number of fatalities by hour of day by country (09-16), 2009

	09	10	11	12	13	14	15	16
BE	32	29	40	23	29	47	44	59
CZ	35	35	25	41	53	53	62	71
DK	10	9	14	10	13	26	16	15
EE	4	4	7	3	0	4	7	6
EL	54	52	54	54	63	70	84	72
ES	111	109	112	151	131	140	143	156
FR	165	174	150	153	164	236	237	298
IT	178	214	221	206	168	193	240	245
LV	7	11	6	10	9	3	13	11
LU	0	1	1	3	0	4	4	3
HU	32	39	28	35	34	26	39	51
MT	0	0	2	0	0	0	0	0
NL	20	27	26	27	39	36	53	49
AT	22	28	25	31	46	30	24	50
PL	162	163	165	182	215	216	193	329
PT	43	31	41	31	38	35	35	48
RO	115	83	116	103	115	115	142	108
SI	3	4	4	7	6	12	14	15
SK	28	12	21	18	16	16	14	28
FI	16	8	10	17	19	15	19	21
UK	97	87	108	91	107	129	113	163
EU-21	1.135	1.120	1.176	1.196	1.264	1.406	1.497	1.798
%	3,5%	3,4%	3,6%	3,6%	3,8%	4,3%	4,6%	5,5%

Table 49: Number of fatalities by hour of day by country (17-24), 2009

	17	18	19	20	21	22	23	unknown	Total
BE	64	49	46	51	51	47	43	0	944
CZ	60	46	44	42	32	37	25	11	901
DK	24	17	18	15	9	9	19		303
EE	7	2	9	4	4	1	4	0	98
EL	77	89	83	66	57	67	50		1.456
ES	161	149	168	171	109	99	94		2.714
FR	322	308	245	199	169	151	157		4.273
IT	271	297	292	220	181	138	122	28	4.237
LV	16	20	21	21	20	16	14		254
LU	5	3	5	5	2	3	0		48
HU	52	51	50	50	45	34	29		822
MT	0	1	0	0	2	0	0	3	15
NL	63	27	32	30	21	20	30	1	644
AT	54	41	35	20	13	15	18		633
PL	320	333	334	268	271	180	148		4.572
PT	46	55	50	42	32	39	31		840
RO	217	210	191	170	150	156	93		2.797
SI	14	9	12	5	8	8	6		171
SK	37	37	28	19	11	16	12	4	384
FI	12	19	7	12	10	16	11		279
UK	143	125	120	102	110	90	103	0	2.337
EU-21	1.965	1.887	1.790	1.512	1.307	1.142	1.009	4.199	32.874
%	6,0%	5,7%	5,4%	4,6%	4,0%	3,5%	3,1%	12,8%	100,0%

Figure 22: Number of fatalities by hour of day (EU-21), 2000 and 2009

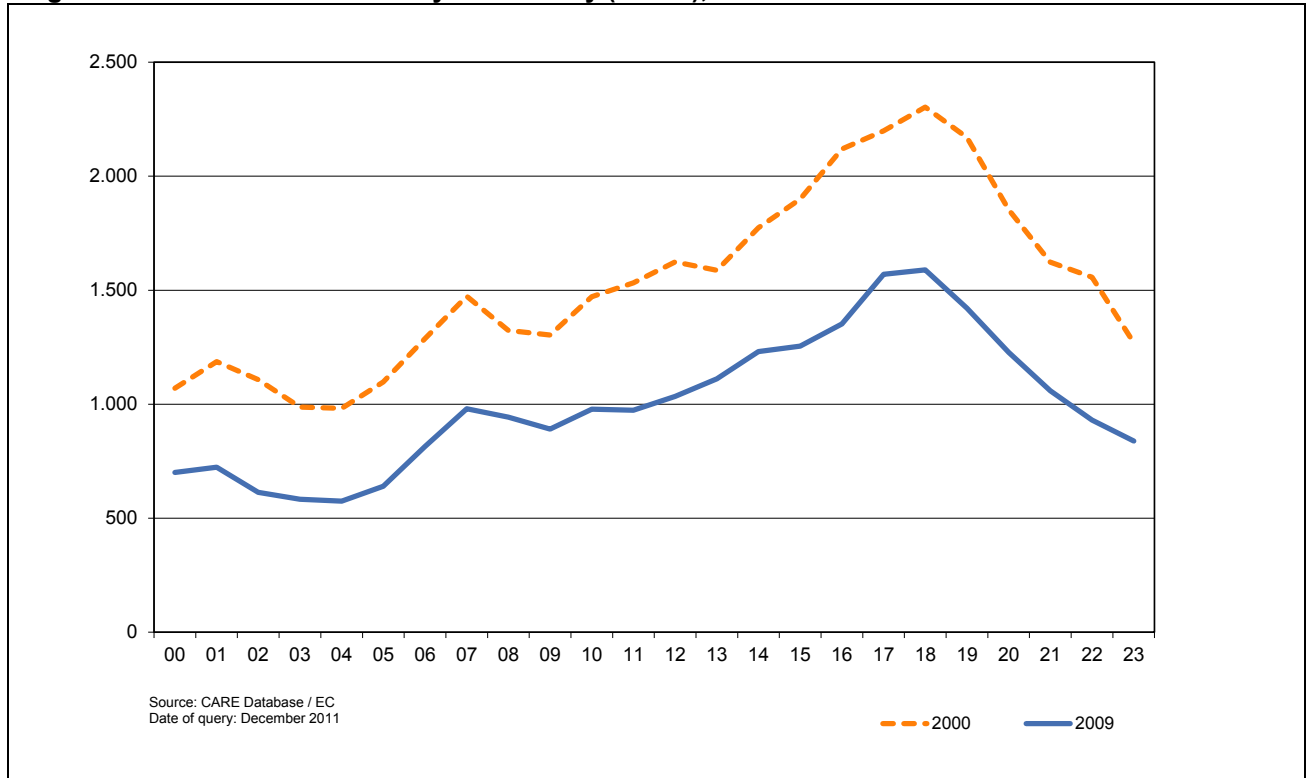


Figure 23: Distribution of fatalities by hour of day and person class (EU-21), 2009

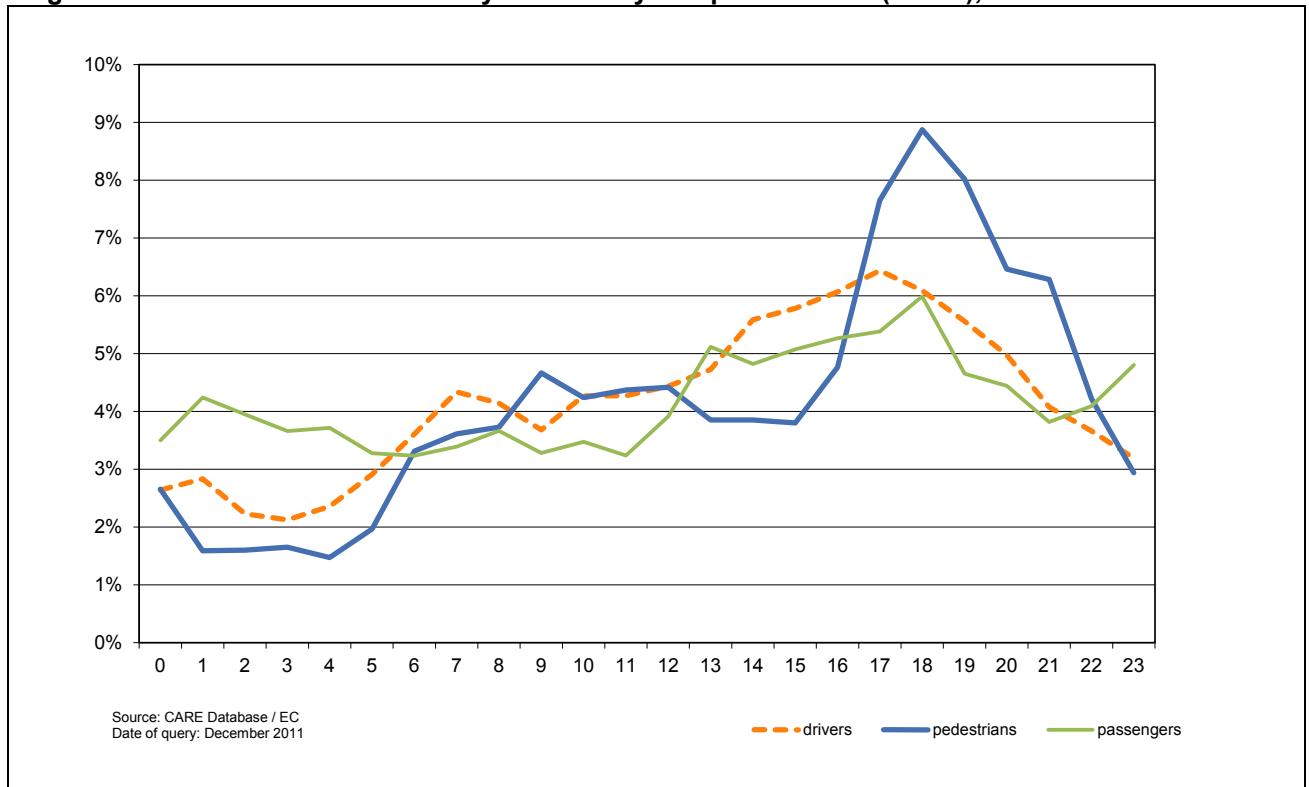
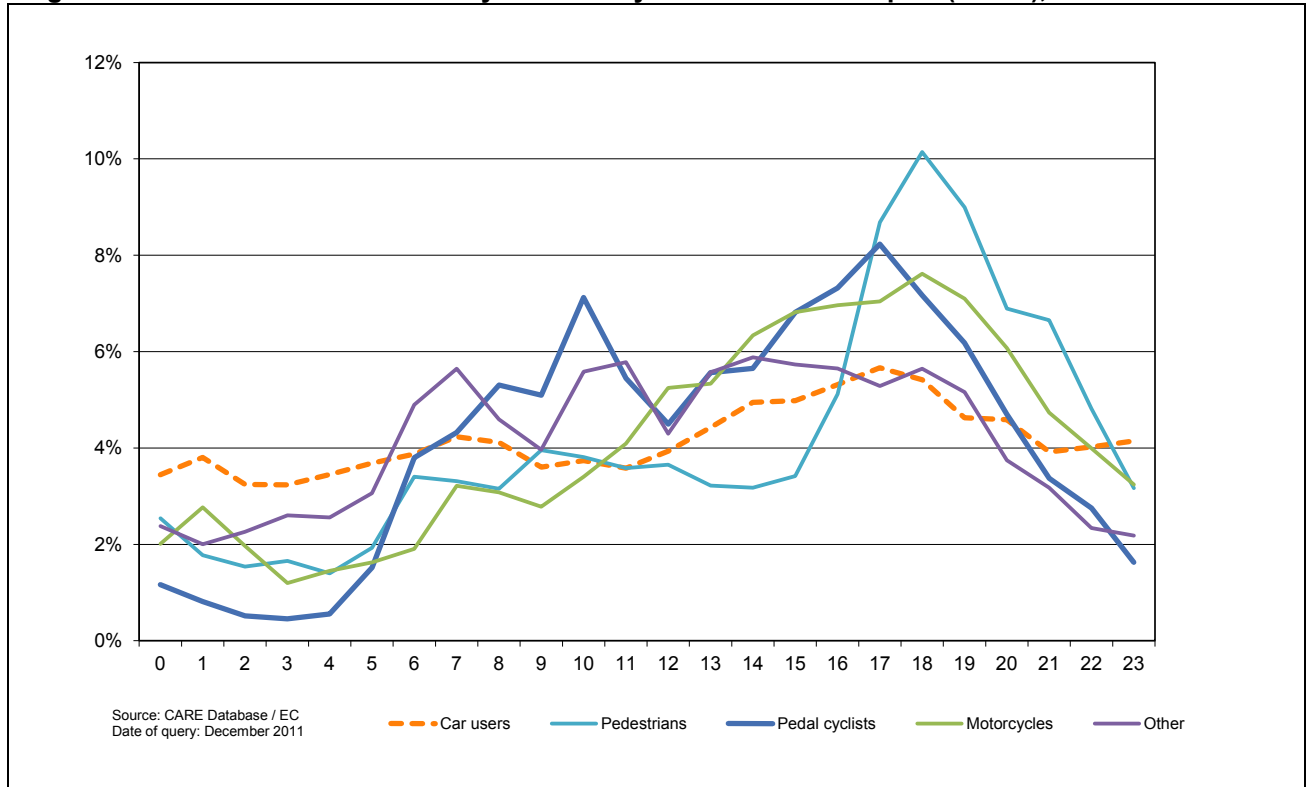


Figure 24: Distribution of fatalities by hour of day and mode of transport (EU-21), 2009



4.3.2 Type of area/road

Figure 25: Number of fatalities by type of area by country, 2009

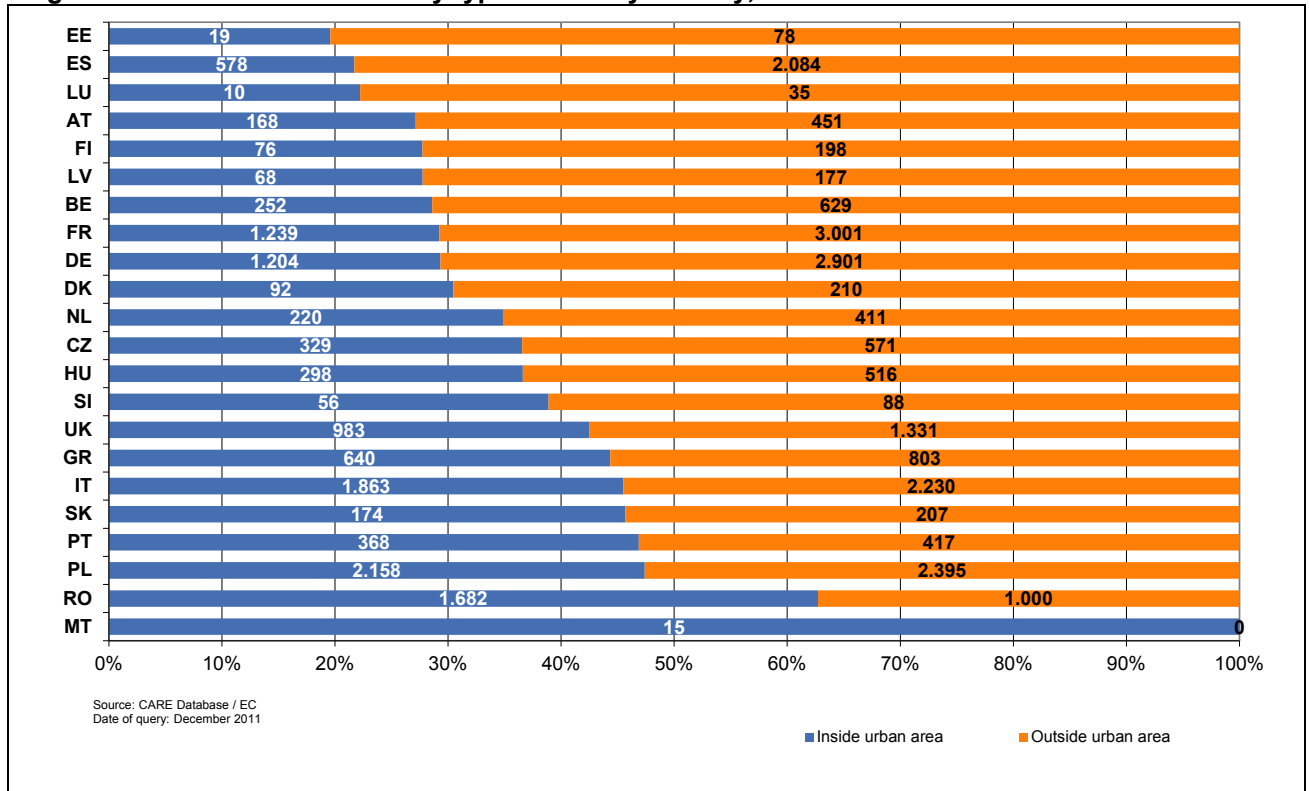


Table 50: Number of fatalities by type of area and road by country, 2009

	inside urban area	outside urban area			Total
		motorway	no motorway	unknown	
BE	257	150	483		890
CZ	329	25	547		901
DK	92	24	187		303
DE	1.225	475	2.452		4.152
EE	19			79	98
EL	646	108	200	502	1.456
ES	584	460	1.669		2.714
FR	1.252	225	2.788	8	4.273
IT	1.892	350	1.995		4.237
LV	68		186		254
LU	10	36			46
HU	301	38	483		822
MT	15				15
NL	227	83	327	5	642
AT	173	61	399		633
PL	2.171	43	2.228	130	4.572
PT	386	89	365		840
RO	1.757	25	1.015		2.797
SI	64	30	77		171
SK	176	9	197	2	384
FI	76	12	191		279
UK	1.000	131	1.130	76	2.337
EU-22	12.720	2.003	17.291	802	32.816
%	38,8%	7,2%	51,6%	2,4%	100,0%
CH	137	34	178		349
IS	5		12		17

4.3.3 Type of junction

Table 51: Number of fatalities by type of junction by country, 2009

	not at a junction	Junction Type					Total	
		crossroad	level crossing	other junction	roundabout	t or y junction		unknown
BE	780		0	161	3			944
CZ	724	77	23	4	4	69		901
DK	210	32	3	55	2	1		303
DE	1.491	898	55	118			1.590	4.152
EE	73	6	4	2	2	7	4	98
EL	1.329						127	1.456
ES	2.230	185		57	67	175		2.714
FR	3.697	263	25	76	46	166		4.273
IT	3.019	551	4	564	99			4.237
LV	41	2	0	3		1	1	48
LU	653	140	21	6	2			822
HU							15	15
MT	423	197	12		12			644
NL	494	93	14		1	31		633
AT	3.833	688	45		6			4.572
PL	691	48	6	6	10	67	13	840
PT	2.541	220	35					2.796
RO	2.544	84	35	48	1	85		2.797
SI	337	14		0	0	21	12	384
SK	228			51				279
FI	293			62	3			358
UK	1.521	125		143	62	486		2.337
EU-22	27.152	3.623	282	1.356	321	1.109	1.762	35.603
%	76,3%	10,2%	0,8%	3,8%	0,9%	3,1%	4,9%	100,0%
CH	137	34	178		178			527
IS	5		12		12			29

4.3.4 Weather conditions

Figure 26: Number of fatalities by weather conditions (EU-23), 2009

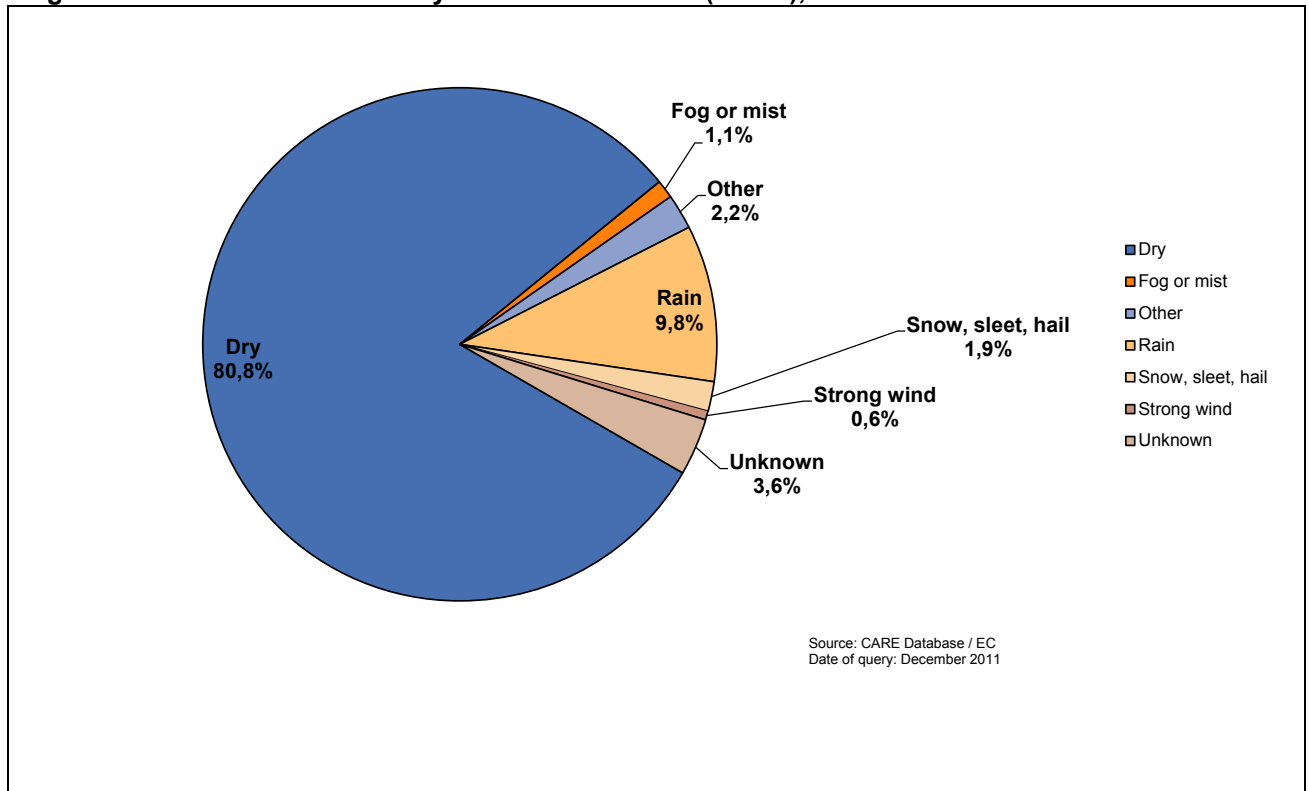


Table 52: Number of fatalities by weather conditions by country, 2009

	dry	fog or mist	Other	rain	snow, sleet, hail	strong wind	unknown	Total
BE	766	5	6	83	7	5	72	944
CZ	733	16	12	111	27	2		901
DK	251	3		38	6	3	2	303
DE	2.821	23		133	131	13	1.031	4.152
EE	81	1		10	5		1	98
EL	1.238	5	28	175		10		1.456
ES	2.342	24	47	258	18	26		2.715
FR	3.666	64	70	420	36	17		4.273
IT	3.221	28	510	446	20	12		4.237
LV	224	4		14	12			254
LU	21	2	1	9			15	48
HU	725	19		61	17			822
MT	10			1			4	15
NL	576	4		50	3		11	644
AT	534	7		59	32	1		633
PL	3.695	86		569	183	39		4.572
PT	671	3	1	156	5	2	1	839
RO	2.421	52		240	78	6		2.797
SI	149			18	1		3	171
SK	289	6	9	46	21	1	12	384
FI	236	9		12	1		7	265
UK	1.866	15	55	313	3	45	28	2.325
EU-22	26.536	376	739	3.222	606	182	1.187	32.848
%	80,8%	1,1%	2,2%	9,9%	1,8%	0,6%	3,6%	100,0%
CH	302	5	1	34	6	1		349
IS	13			2		1	1	17

5 Glossary

The CARE glossary provides short definitions for variables used in the Annual Statistical Report, and includes short definitions of CARE common values.

The glossary has two components:

- a) A **definition** of the common value
- b) The **availability** of the common value in the data file for each Member State.

ACCIDENT

ACCIDENT

Definition: Occurs on a public road. Occurs on a private road to which the public has right of access (except BE, NL, PT). Involves at least one moving vehicle (except UK, PT). Involves at least one injured or killed person. Is reported by the police. Self reporting possible (BE, UK, EL, IT, IE). Self reporting not possible (DK, FI, NL, AT, PT). Confirmed suicides excluded (BE, UK, IE, NL, AT, DK, PT). Confirmed suicides included (ES, IT, LU).

Note: The variation in the groups of road and the coverage of the injury categories included in injury accidents, together with differences in the level of self reported accidents, will lead to significant variations in the number of injury accidents reported, and their reporting rate, between Member States.

FATAL ACCIDENT

Definition: Accident with at least one killed person regardless the injury severity of any other involved persons.

Note: See "killed" definition from Injury Severity defined in Person type item (Death within 30 days of a road accident [UN/ECE Geneva 1995 – Statistics of Road Traffic Accidents in Europe and North America], except AT [3 days before 1992], ES [24 hours in CARE; 24 hours before 1993 in publication], FR [6 days], GR [24 hours], IT [7 days], PT [24 hours]. Suicide not included [except DK, ES, FR]. Natural death not included [except LU, SE]).

Data availability: All countries

TIME TYPE ITEMS

MONTH

Definition: Calendar month

Data availability: All countries (except DK)

HOUR

Definition: Period of 60 minutes. Rounded down to whole hours (except EL, ES, IT: rounded to nearest hour).

Note: Winter time is:

- GMT from November to March (DE from 1996 onwards, GB, IE, NI, PT)
- GMT +1 hour from October to March (BE, AT, DK prior to 1996, DK, ES, FR, IT, LU, NL, SE)
- GMT +2 hours from October to March (EL, FI).

Summer time is one hour ahead of winter time:

- GMT +1 hour from April to October (DK from 1996 onwards, GB, IE, NI, PT)
- GMT +2 hours from April to September (AT, BE, DK prior to 1996, DK, ES, FR, IT, LU, NL, SE)
- GMT +3 hours from April to September (EL, FI)

For PT, unknown hour coded as '12' during daytime and '0' during night time

Data availability: All countries (except DK)

DAY OF WEEK

Definition: 24 hour day within 7 day week.

Note: Data calculated by the CARE system from the date of accident, where data is not available in national files (AT from 1992 onwards, BE, FR prior to 1993, PT, SE).

Data availability: All countries.

PERSON CLASS

DRIVER

Definition: Person driving or riding any motorised vehicle or pedal cycle. Person herding animals is not a driver (except BE, AT). Learner driver is a driver (except ES, PT). Learner driver is a driver during a driving test, but not in a driving lesson (DK). Driving instructor is not a driver (except ES, PT). Driving instructor is a driver during a driving lesson, but not during a driving test (DK).

Note: Uninjured drivers are included in the database (except GB, NI, NL: implicitly included in vehicle records only). Data on driving instructors and learner drivers collected separately from 1993 onwards (SE).

Data availability: All countries.

PASSENGER

Definition: Person on or in a vehicle, who is not the driver. Includes person in the act of boarding or alighting from a vehicle (except DK). Learner driver is not a passenger (except ES, PT). Learner driver is a passenger during a driving lesson, but not during a driving test (DK). Driving instructor is a passenger (except ES, PT). Driving instructor is a passenger during a driving test, but not in a driving lesson (DK).

Note: Uninjured passengers not included in the database (except FR, IE, LU; ES, FI in some cases, AT).

Data availability: All countries.

PEDESTRIAN

Definition: Person on foot. Person pushing or holding bicycle (except DK). Person pushing a pram or pushchair. Person leading or herding an animal (except DK, AT). Person riding a toy cycle on the footway (except AT). Person on roller skates, skateboard or skis (except AT). Does not include person in the act of boarding or alighting from a vehicle (except DK, ES).

Note: Uninjured pedestrians not included in the database (except BE, IE, LU, NL implicitly included in element records; DK, FR, FI, AT, SE if they caused the accident; ES not consistently).

Data availability: All countries.

TYPE OF INJURY

INJURED

Definition: Injured with application of correcting coefficient as stated for the 'Killed at 30 days'. Injured in a road accident. Hospitalisation or medical treatment not necessarily required (except FR). Self declaration of injury (DK if slight; FI, GB, IT, IE, NI). Opinion of the police. Aggregation of the following. injury severities: SERIOUSLY INJURED AS REPORTED + SLIGHTLY INJURED + INJURED - 1 COEFFICIENT

Data availability: All countries

FATALITIES

Definition:

Death within 30 days of a road accident (UN/ECE Geneva 1995 – Statistics of Road Traffic Accidents in Europe and North America, annex 1). Suicide not included (except DK, ES, FR). Natural death not included (except LU, SE). Corrective factors have been applied to comply with this international definition for the following countries: EL (24 hours), ES (24 hours in CARE; 24 hours before 1993 in publication), FR (6 days), IT (7 days), AT (3 days before 1992), PT (24 hours).

Data availability:

All countries.

Member State	Correcting factors			
Greece	$K(30) = K * 1.18$ up to 1995			
Spain	$K(30) = K * 1.3$ up to 1992			
	1993 up to 1996:	Outside urban area	Inside urban area	
		Driver	$K(30)=K+SI*2.46\%$	$K(30)=K+SI*1.02\%$
		Passenger	$K(30)=K+SI*2.29\%$	$K(30)=K+SI*0.94\%$
		Pedestrian	$K(30)=K+SI*7.22\%$	$K(30)=K+SI*3.87\%$
	1997 up to 2000:	Outside urban area	Inside urban area	
		Driver	$K(30)=K+SI*2.44\%$	$K(30)=K+SI*1.93\%$
		Passenger	$K(30)=K+SI*2.17\%$	$K(30)=K+SI*1.80\%$
		Pedestrian	$K(30)=K+SI*4.76\%$	$K(30)=K+SI*5.71\%$
	2001 up to 2004:	Outside urban area	Inside urban area	
		Driver	$K(30)=K+SI*2.41\%$	$K(30)=K+SI*2.17\%$
		Passenger	$K(30)=K+SI*2.24\%$	$K(30)=K+SI*2.15\%$
	Pedestrian	$K(30)=K+SI*6.17\%$	$K(30)=K+SI*4.34\%$	
France	$K(30) = K * 1.09$ up to 1993 $K(30) = K * 1.057$ from 1994 onwards			
Italy	$K(30) = K * 1.078$			
Austria	$K(30) = K * 1.12$ only for 1991			
Portugal	$K(30) = K * 1.3$ up to 1997 $K(30) = K * 1.14$ from 1998 onwards			
K: number of persons killed, SI: number of persons seriously injured				

GENDER

FEMALE

Definition:

Determined by the police (except ES, IT, LU, AT, PT: on the basis of identity documents; DK, FI, SE: on the basis of personal ID number).

Data availability:

All countries.

MALE

Definition: Determined by the police (except ES, IT, LU, AT, PT: on the basis of identity documents; DK, FI, SE: on the basis of personal ID number).

Data availability: All countries.

AGE

AGE

Definition: Length of life of person. Rounded down to whole number of years (except EL, IT, NI: rounded to nearest year).

Note: Age 0 to 1 is exceptionally rounded up (FR, IT, IE, LU, NI, PT). Age over 99 only available for ES, FR (1993 on), NL.

Data availability: All countries.

AREA TYPE

INSIDE URBAN AREA

Definition: Area inside urban area boundary signs (except IE, UK). Includes dual carriageways and national roads. Can include motorways (except DK, EL, IT). Opinion of the police (DK, SE).

Note: Data approximated from speed limit of 40 mph or less (IE, UK).

Data availability: All countries.

OUTSIDE URBAN AREA

Definition: Area outside urban area boundary signs. Opinion of the police (DK, SE). Includes motorways.

Note: Data approximated from speed limit of over 40 mph (IE, UK).

Data availability: All countries.

MOTORWAY

Definition: Public road with dual carriageways, and at least two lanes each way. Entrance and exit signposted. Road with grade separated interchanges. Road with a central barrier or central reservation. No crossing permitted. No stopping permitted unless in an emergency. Entry prohibited for pedestrians, animals, pedal cycles, mopeds, agricultural vehicles; learner drivers (BE, GB, EL, IE, NI, PT). Access restricted to motor vehicles (DK, FI, AT). Minimum speed between 50 km/h and 80 km/h (except FR, UK). Maximum speed between 100 km/h and 130 km/h (except DK and DE recommended 130 km/h).

Data availability: All countries.

MODES OF TRANSPORT – VEHICLE GROUP

AGRICULTURAL TRACTOR

Definition: Motor vehicle for agricultural use, with wheels or caterpillar tracks, with at least two axles. Driving licence required (DK, EL, ES, FI, GB, IT, IE, LU, AT; not in FR). Maximum speed 30 km/h or 40 km/h.

Data availability: All countries (except DK prior to 1997, AT, FR, GB, IE from 1996 onwards, LU).

Value included in another value:

agricultural machine (FR), construction or agricultural machine (DK, AT prior to 1997), agricultural or industrial tractor (LU), other motor vehicle (GB), other (IE from 1996 onwards).

BUS OR COACH

Definition:

Motor vehicle with at least four wheels, used for transporting people. Public or private use. Type D driving licence required (BE, GB, IE, NI). Includes bus, more than 8 and 16 seats, minibus, trolley-bus (except LU), scheduled bus, unscheduled bus, school bus.

Data availability:

All countries.

CAR OR TAXI

Definition:

Includes car, taxi. Motor vehicle with four wheels. Used to transport only or mainly people. Seating for no more than 8 passengers. Type B driving licence required. Includes taxi-bus (NL).

Data availability:

All countries.

HEAVY GOODS VEHICLE

Definition:

Includes road tractor, road tractor with semi trailer, lorry over 3,5 tonnes. Motor vehicle with at least four wheels, with a permissible gross vehicle weight of over 3.5 tonnes, used only for the transport of goods. With or without a trailer. Type C driving licence required. Includes lorry, over 3.5 tonnes ; road tractor ; road tractor with semi-trailer ; lorry with trailer ; tanker (except FI).

Note:

Lorries cannot systematically be categorised as over 3.5 tonnes (DK, IT).

Data availability:

All countries (except DE, IT).

LORRY, LESS THAN 3,5 TONNES

Definition:

Motor vehicle with a permissible gross vehicle weight of less than 3.5 tonnes, used only for the transport of goods. Type B driving licence required.

Note:

Lorries cannot systematically be categorised as less than 3.5 tonnes (DK, IT).

Data availability:

All countries (except DK, IT, LU).

MOPED

Definition:

Motor vehicle with two wheels, with an engine size of less than 50 cc. Design speed between 25 km/h and 50 km/h. One or two seats. Minimum age for driver between 14 and 18 (except IT). No driving licence required (ES, FR, FI, GB, IT, PT, SE). Unregistered vehicle (BE, DK, ES, FR, SE).

Data availability:

All countries (except IE from 1996 onwards).

Value included in another value:

Two wheeled motor vehicle (IE from 1996 onwards).

MOTORCYCLE

Definition:

Motor vehicle with two or three wheels (not three wheeled in DK), with an engine size of more than 50 cc. With a trailer possible (except DK). With a sidecar possible. Registered vehicle (except PT). Type A driving licence required. Includes motor scooter (except FR).

Data availability:

All countries (except IE from 1996 onwards).

Value included in another value: two wheeled motor vehicle (IE from 1996 onwards).

OTHER VEHICLE

Definition: Includes other non-motor vehicle, other motor vehicle.

PEDAL CYCLE

Definition: Vehicle with at least two wheels, without engine, moved by pedals or hand cranks. With or without a trailer. With or without passengers. Ridden in the carriageway. Ridden on the pavement (except DK, LU).

Data availability: All countries.

PEDESTRIAN

Definition: Wherever a person's person class has been identified as being pedestrian, its vehicle type is "pedestrian". This as opposed to older version of CARE where a pedestrian didn't have a vehicle type.

Data availability: All countries.

JUNCTION TYPE

JUNCTION

Definition: Road intersection with three or more arms. Not grade separated. Includes t junction, y junction, crossroad, level crossing (except DK, FI, GB, NI), roundabout (except FR), multiple junction.

Data availability: All countries (except EL).

CROSSROAD

Definition: Road intersection with four arms. Opinion of the police (DK, ES, FI; not AT).

Data availability: All countries (except BE, EL).

NOT AT A JUNCTION

Definition: Position on road more than 20m from a junction or roundabout (GB, IE, NI, NL, AT). Position on road more than 50m from a junction (FR). Opinion of the police (BE, DK, ES, FI, IT, LU, SE).

Data availability: All countries (except EL).

ROUNDABOUT

Definition: Circular highway. Includes sections of the road leading into it, within 20m (GB, IE, NI, AT). Opinion of the police (DK, ES, FR, IT).

Data availability: All countries (except BE, DK, EL, FI, LU, PT).

T OR Y JUNCTION

Definition: Road intersection with three arms. Includes t junction, y junction, staggered junction.

Data availability: All countries (except BE, EL, FI, IT, PT).

6 List of tables

Table 1:	Annual number of injury accidents by country, 2000-2009	11
Table 2:	Annual number of fatalities by country, 2000-2009	14
Table 3:	Annual number of fatal accidents by country, 2000-2009	17
Table 4:	Annual number of pedestrian fatalities by country, 2000-2009	19
Table 5:	Annual number of pedal cyclist fatalities by country (includes all riders and passengers of pedal cycles), 2000-2009	20
Table 6:	Annual number of moped rider & passenger fatalities by country, 2000-2009	21
Table 7:	Annual number of motorcycle rider & passenger fatalities by country, 2000-2009	22
Table 8:	Annual number of car and taxi driver and passengers fatalities by country, 2000-2009	24
Table 9:	Annual number of heavy goods vehicles >3,5t fatalities by country, 2000-2009	25
Table 10:	Annual number of lorries <3,5t fatalities by country, 2000-2009	26
Table 11:	Annual number of buses or coaches fatalities by country, 2000-2009	27
Table 12:	Annual number of fatalities by age group by country, 2000-2001	30
Table 13:	Annual number of fatalities by age group by country, 2002-2003	31
Table 14:	Annual number of fatalities by age group by country, 2004-2005	32
Table 15:	Annual number of fatalities by age group by country, 2006-2007	33
Table 16:	Annual number of fatalities by age group by country, 2008-2009	34
Table 17:	Annual number of female fatalities by country, 2000-2009	35
Table 18:	Annual number of male fatalities by country, 2000-2009	36
Table 19:	Annual number of female fatalities by country, drivers (2000-2009)	38
Table 20:	Annual number of male fatalities by country, drivers (2000-2009)	39
Table 21:	Annual number of female fatalities by country, passengers (2000-2009)	40
Table 22:	Annual number of male fatalities by country, passengers (2000-2009)	41
Table 23:	Annual number of female fatalities by country, pedestrians (2000-2009)	42
Table 24:	Annual number of male fatalities by country, pedestrians (2000-2009)	43
Table 25:	Number of total fatalities by age group by country, 2009	44
Table 26:	Number of female fatalities by age group by country, 2009	45
Table 27:	Number of male fatalities by age group by country, 2009	46
Table 28:	Number of pedestrian fatalities by age group by country, 2009	47
Table 29:	Number of pedal cyclist fatalities by age group by country, 2009	48
Table 30:	Number of moped rider and passenger fatalities by age group by country, 2009	49
Table 31:	Number of motorcycle rider and passenger fatalities by age group by country, 2009	50
Table 32:	Number of car driver and passenger fatalities by age group by country, 2009	51
Table 33:	Number of fatalities by mode of transport (in which the fatality was travelling) and type of area by country (part 1), 2009	53
Table 34:	Number of fatalities by mode of transport (in which the fatality was travelling) and type of area by country (part 2), 2009	54
Table 35:	Number of fatalities by month by country (January to June), 2009	56
Table 36:	Number of fatalities by month by country (July to December), 2009	57
Table 37:	Number of driver fatalities by month by country (January to June), 2009	58
Table 38:	Number of driver fatalities by month by country (June to December), 2009	59
Table 39:	Number of passenger fatalities by month by country (January to June), 2009	60
Table 40:	Number of passenger fatalities by month by country (July to December), 2009	61
Table 41:	of pedestrian fatalities by month by country (January to June), 2009	62
Table 41:	of pedestrian fatalities by month by country (July to December), 2009	63
Table 43:	Total number of fatalities by day of week by country, 2009	65
Table 44:	Number of fatalities by day of week by country, 2009 (drivers)	66
Table 45:	Number of fatalities by day of week by country 2009 (passengers)	67
Table 46:	Number of fatalities by day of week by country, 2009 (pedestrians)	68
Table 47:	Number of fatalities by hour of day by country (00-08), 2009	69
Table 48:	Number of fatalities by hour of day by country (09-16), 2009	70
Table 49:	Number of fatalities by hour of day by country (17-24), 2009	71
Table 50:	Number of fatalities by type of area and road by country, 2009	75
Table 51:	Number of fatalities by type of junction by country, 2009	76
Table 52:	Number of fatalities by weather conditions by country, 2009	78

7 List of figures

Figure 1:	Annual number of fatalities, injury accidents and injured people (EU-27), 2000-2009	7
Figure 2:	Fatalities per million inhabitants, 2009 compared to 2000 (EU-27)	7
Figure 3:	Share of fatalities by area type in EU-21, 2009	8
Figure 4:	Distribution of male and female fatalities by person class in EU-24, 2009	8
Figure 5:	Distribution of fatalities by mode of transport, 2009	9
Figure 6:	Percentage change in number of fatalities and injury accidents by country (2009 compared to 2000)	10
Figure 7:	Annual number of injury accidents by country (BE – ES), 2000-2009	12
Figure 8:	Annual number of injury accidents by country (FR-PL), 2000-2009	12
Figure 9:	Annual number of injury accidents by country (PT-UK), 2000-2009	13
Figure 10:	Annual number of fatalities by country (BE-ES), 2000-2009	15
Figure 11:	Annual number of fatalities by country (FR-PL), 2000-2009	15
Figure 12:	Annual number of fatalities by country (PT-UK), 2000-2009	16
Figure 13:	Percentage change in number of fatalities by mode of transport in EU-18 (2009 compared to 2000)	18
Figure 14:	Annual number of fatalities by mode of transport (in which the fatality was travelling, includes driver & passenger), 2000-2009	23
Figure 15:	Annual number of fatalities by mode of transport (in which the fatality was travelling, includes driver & passenger), 2000-2009	28
Figure 16:	Increase / decrease of number of fatalities by gender (EU-19), 2009 compared to 2000	29
Figure 17:	Annual distribution of fatalities by gender, EU-19 (2000 and 2009)	37
Figure 18:	Fatalities by type of area and mode of transport (EU-23), 2009	52
Figure 19:	Number of fatalities by month (EU-22), 2009	55
Figure 20:	Number of fatalities by month and person class (EU-22), 2009	55
Figure 21:	Total number of fatalities by day of week and person class (EU-23), 2009	64
Figure 22:	Number of fatalities by hour of day (EU-21), 2000 and 2009	72
Figure 23:	Distribution of fatalities by hour of day and person class (EU-21), 2009	72
Figure 24:	Distribution of fatalities by hour of day and mode of transport (EU-21), 2009	73
Figure 25:	Number of fatalities by type of area by country, 2009	74
Figure 26:	Number of fatalities by weather conditions (EU-23), 2009	77