



Annual Accident Report 2015



CONTENTS

1	Introduction	3
1.1	The CARE Database	3
1.2	Notes	4
2	Overview – major issues	5
2.1	EU– Developments	5
2.2	Interesting Details	14
3	Time Series – last 10 years in detail	16
3.1	Time series related to mode of transport	16
3.2	Time series related to person age and gender	27
4	Fatalities 2013	42
4.1	People involved	42
4.1.1	Age and gender of persons	42
4.2	Modes of transport	45
4.2.1	Mode of transport by age of persons	45
4.2.2	Mode of transport by type of area	50
4.3	Accident characteristics	53
4.3.1	Various periods of time (month, day of week, hour of day)	53
4.3.2	Type of area/road	73
4.3.3	Type of junction	75
4.3.4	Weather conditions	76
5	Glossary	78
6	List of tables	84
7	List of figures	85

1 Introduction

1.1 The CARE Database

Community database on **A**ccidents on the **R**oads in **E**urope

Road traffic accidents in the Member States of the European Union claim about 26.000 lives and leave more than 1.3 million people injured in 2013. Since 1984, a large number of measures to reduce road accidents have been taken at a regional level. Along with these measures, the Council adopted a Decision on 30 November 1993 on the creation of a Community database on road accidents (93/704/EC)¹, the CARE project.

It was commonly agreed that such a database at the Community level would make it possible to identify and quantify road safety problems, evaluate the efficiency of road safety measures, determine the relevance of Community actions and facilitate the exchange of experience in this field. After a pilot phase of about 3 years, the Council endorsed the “Report from the Commission on the progress with the project and its future prospects” (COM(97) 238 final).

CARE is a Community database on road accidents resulting in death or injury (no statistics on damage-only accidents are kept). The major difference between CARE and most other existing international databases is the high level of disaggregation, i.e. CARE is based on detailed data of individual accidents as collected by the Member States. This structure allows for maximum flexibility and potential with regard to analysing the information contained in the system and opens up a whole set of new possibilities in the field of accident analysis.

National data sets are integrated into the CARE database in their original national structure and definitions, with confidential data blanked out. However, transformation rules are implemented in the CARE database in order to increase data compatibility and thus enhance the functioning of the system.

The process of improving “homogenisation” of accident data within CARE is underway. In the meantime, the inherent incompatibility of national accident data remains a source of possible misinterpretation when performing comparative analyses at international level. Therefore, on-line access to the CARE database is currently restricted to expert users. The summary statistical tables and figures contained here provide an overview of road accident data from 2004 to 2013. For some figures other sources than CARE have been used in order to give an overview of EU road accident data.

¹ OJ No 329, 30.12.1993, p. 63.

1.2 Notes

1. Country abbreviations

Belgium	BE	Italy	IT	Romania	RO
Bulgaria	BG	Cyprus	CY	Slovenia	SI
Czech Republic	CZ	Latvia	LV	Slovakia	SK
Denmark	DK	Lithuania	LT	Finland	FI
Germany	DE	Luxembourg	LU	Sweden	SE
Estonia	EE	Hungary	HU	United Kingdom	UK
Ireland	IE	Malta	MT		
Greece	EL	Netherlands	NL	Iceland	IS
Spain	ES	Austria	AT	Liechtenstein	LI
France	FR	Poland	PL	Norway	NO
Croatia	HR	Portugal	PT	Switzerland	CH

2. Sources: CARE (Community database on road accidents)

The glossary of definitions of variables used in this Report is in the appendix, the full glossary is available at: http://ec.europa.eu/transport/road_safety/pdf/statistics/cadas_glossary.pdf.

3. Data available in May 2015

4. Data refer to 2013 and when not available the latest available data are used (2009 data for BG and EE, 2010 data for MT and SK, and 2012 data for IE). Totals and related average percentages for EU also include latest available data.

5. Lithuanian data not included in the totals

6. This 2015 edition of Annual Accident Report updates the previous versions produced within the EU co-funded research projects SafetyNet and DaCoTA under the name Annual Statistical Report.

7. Disclaimer

This report has been produced by the National Technical University of Athens (NTUA), the Austrian Road Safety Board (KFV) and the European Union Road Federation (ERF) under a contract with the European Commission. Whilst every effort has been made to ensure that the matter presented in this report is relevant, accurate and up-to-date, the Partners cannot accept any liability for any error or omission, or reliance on part or all of the content in another context.

Any information and views set out in this report are those of the author(s) and do not necessarily reflect the official opinion of the Commission. The Commission does not guarantee the accuracy of the data included in this study. Neither the Commission nor any person acting on the Commission's behalf may be held responsible for the use that may be made of the information contained therein.

8. Please refer to this Report as follows:

European Commission, Annual Accident Report. European Commission, Directorate General for Transport, June 2015.

2 Overview – major issues

2.1 EU- Developments

Figure 1: Annual number of fatalities, injury accidents and injured people in the EU, 2004-2013

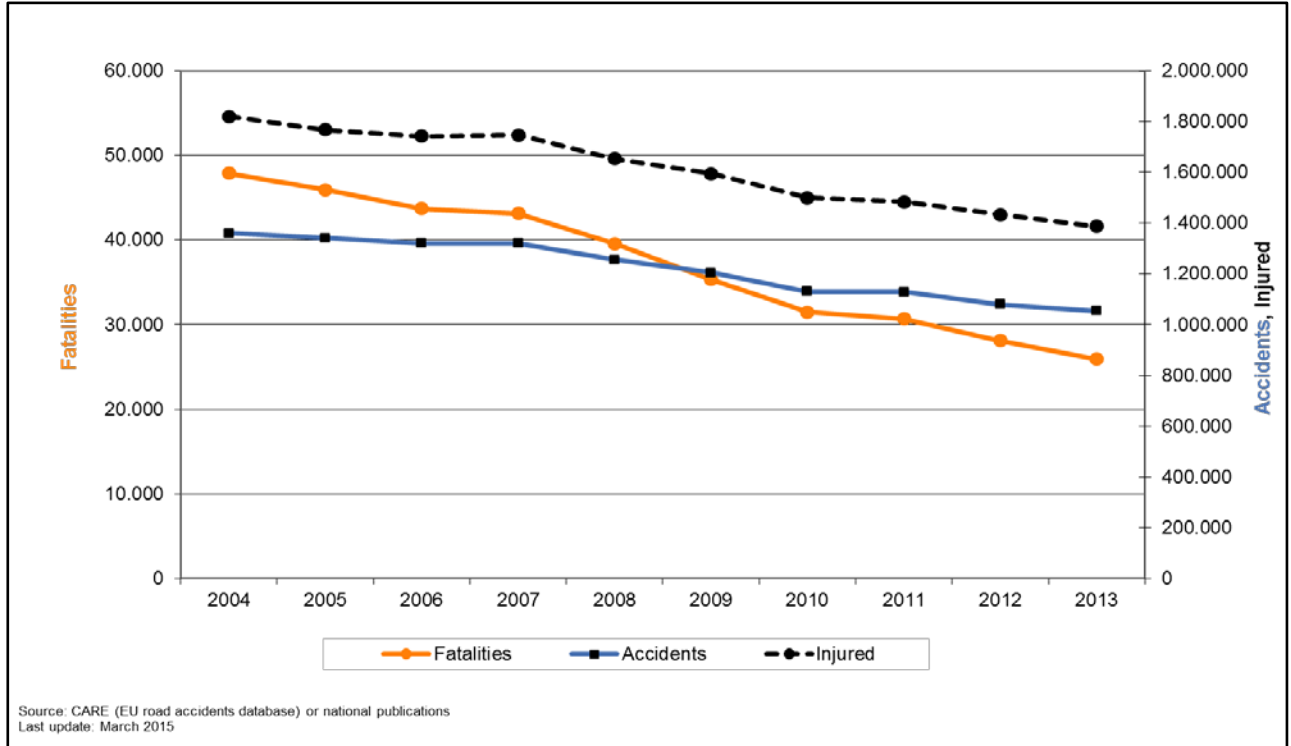


Figure 2: Fatalities per million inhabitants in the EU, 2013 compared to 2004

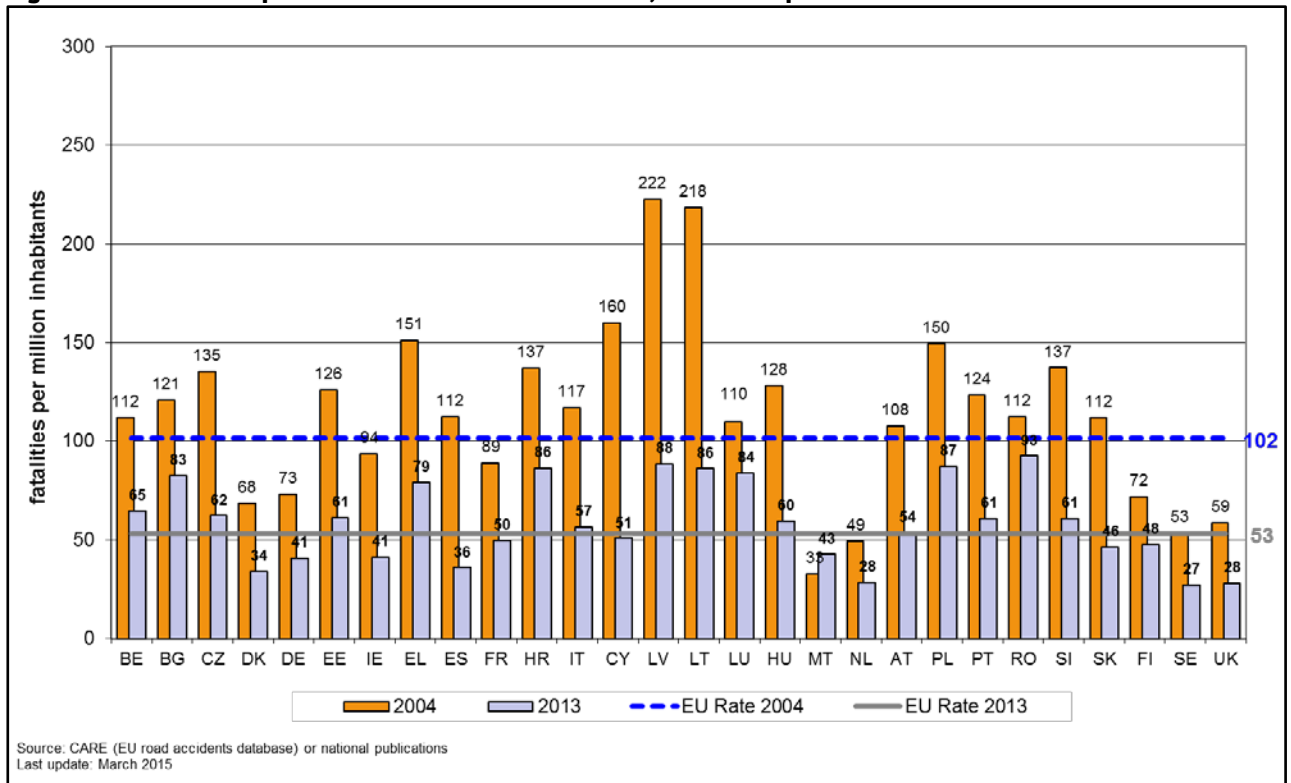


Figure 3: Percentage change in number of fatalities and injury accidents by country, 2013 and 2014

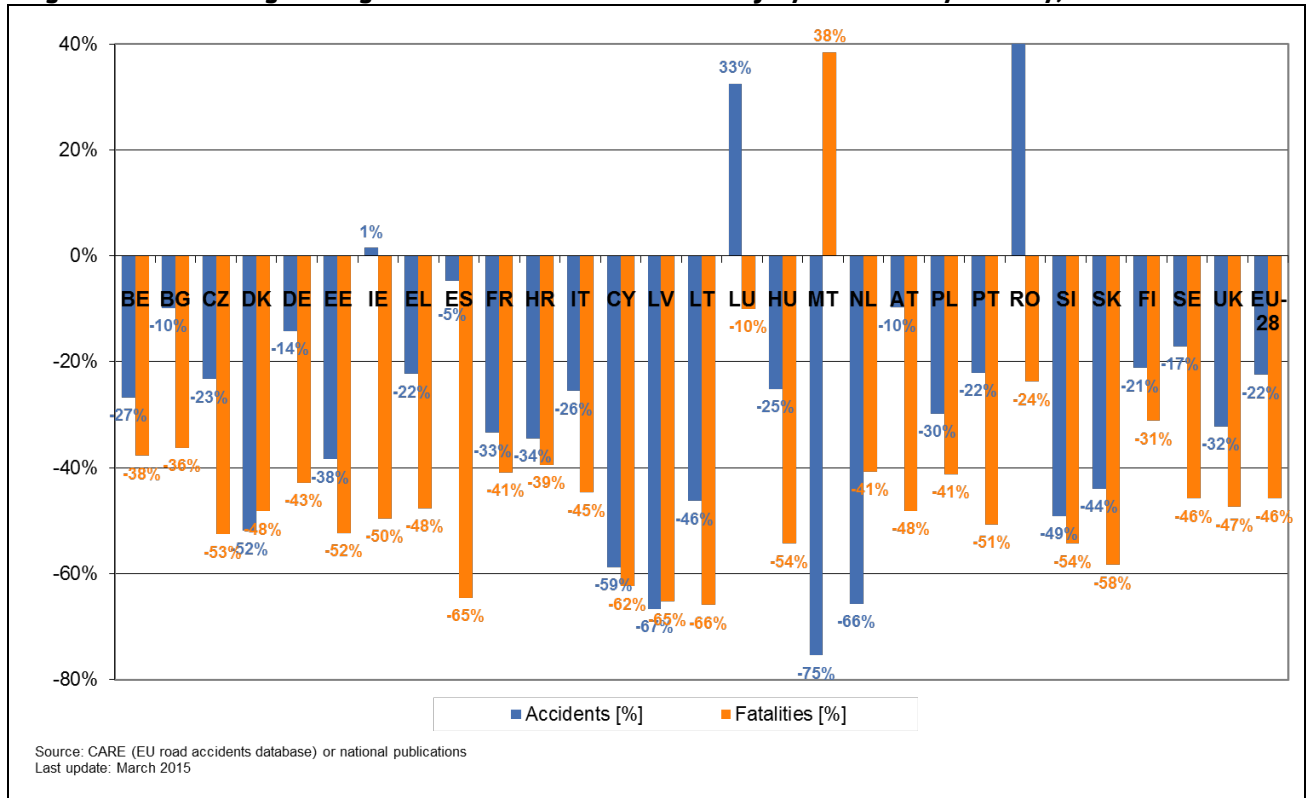


Table 1: Annual number of injury accidents by country, 2004-2013

	2004	2005	2006	2007	2008	2009	2010	2011	2012	2013
BE	48.670	49.307	49.171	43.239	42.115	41.944	40.569	42.050	37.478	35.632
BG	7.612	8.224	8.222	8.010	8.045	7.068	6.610	6.638	6.717	6.859
CZ	26.516	25.239	22.115	23.060	22.481	21.706	19.675	20.486	20.503	20.342
DK	6.209	5.413	5.403	5.549	5.020	4.174	3.498	3.525	3.124	2.985
DE	339.308	336.618	327.984	335.845	320.614	310.667	288.297	306.266	299.637	291.105
EE	2.244	2.341	2.585	2.449	1.868	1.506	1.347	1.492	1.383	1.382
IE	5.780	6.533	6.018	6.018	6.736	6.615	5.779	5.230	5.610	5.865
EL	15.547	16.914	16.190	15.499	15.083	14.789	15.032	13.849	12.398	12.072
ES	94.009	91.187	99.779	100.508	93.161	88.251	85.503	83.027	83.115	89.519
FR	85.390	84.525	80.309	81.272	74.487	72.315	67.288	65.024	60.437	56.812
HR	17.140	15.679	16.706	18.033	16.290	15.731	13.274	13.229	11.774	11.228
IT	243.490	240.011	238.124	230.871	218.963	215.430	211.404	205.638	188.228	181.227
CY	1.880	1.382	1.558	1.468	1.392	1.197	1.198	1.058	919	774
LV	10.487	9.310	8.986	9.865	8.894	3.160	3.193	3.386	3.358	3.489
LT	6.357	6.772	6.588	6.448	4.796	3.827	3.530	3.266	3.392	3.418
LU	716	775	805	954	927	869	787	962	1.019	949
HU	20.957	20.777	20.977	20.634	19.174	17.863	16.308	15.827	15.174	15.691
MT	1.281	848	894	942	764	636	577	348	348	314
NL	27.758	27.007	24.527	25.819	23.708	19.378	12.457	10.778	4.968	9.522
AT	42.657	40.896	39.884	41.096	39.173	37.925	35.348	35.129	40.831	38.502
PL	51.068	48.100	46.876	49.536	49.054	44.195	38.832	40.069	37.046	35.847
PT	38.930	37.066	35.680	35.311	33.613	35.484	35.426	32.541	29.867	30.339
RO	7.335	19.819	21.905	24.661	29.307	28.612	25.995	26.647	26.928	24.827
SI	12.890	10.509	11.620	11.640	9.165	8.717	7.659	7.257	6.857	6.559
SK	8.443	7.903	7.988	8.483	8.416	8.415	8.119	5.378	5.007	4.729
FI	6.767	7.020	6.740	6.657	6.881	6.414	6.072	6.408	5.725	5.334
SE	18.029	18.094	18.213	18.548	18.462	18.027	16.627	16.274	16.636	14.942
UK	213.043	203.712	194.789	188.105	176.814	169.805	160.080	157.068	151.346	144.480
EU	1.360.513	1.341.981	1.320.636	1.320.520	1.255.403	1.204.720	1.130.484	1.128.850	1.079.825	1.054.744
Yearly Change		-1,4%	-1,6%	0,0%	-4,9%	-4,0%	-6,2%	-0,1%	-4,3%	-2,3%
IS	1.156	1.013	1.326	1.655	1.571	1.282	1.261	1.217	1.034	1.214
LI	--	--	--	--	--	--	--	--	--	-
NO	12.121	11.214	11.125	12.082	10.868	9.844	9.130	8.363	8.195	6.841
CH	38.559	27.326	27.299	27.704	26.194	25.717	24.870	23.864	22.787	21.927

Source : CARE (EU road accidents database) or national publications

Figure 4: Annual number of injury accidents by country (part 1), 2004-2013

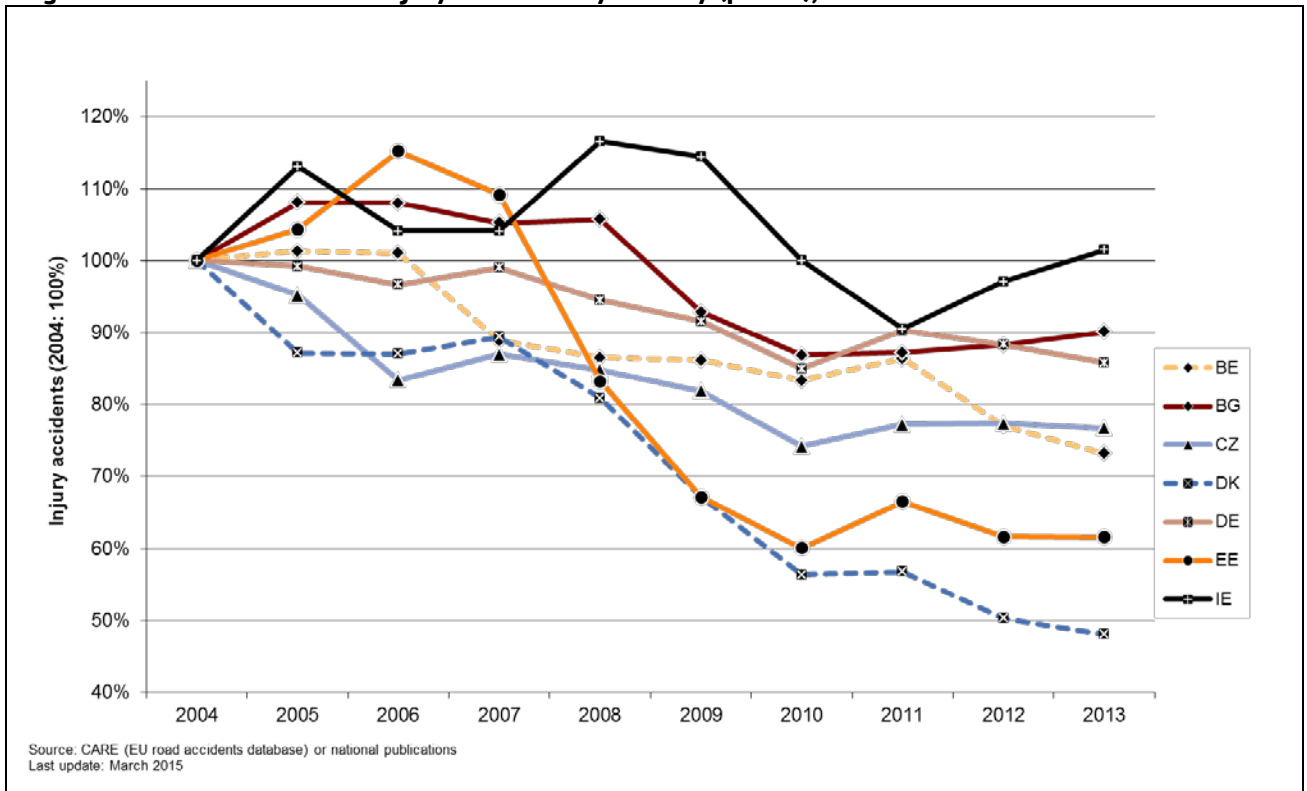


Figure 5: Annual number of injury accidents by country (part 2), 2004-2013

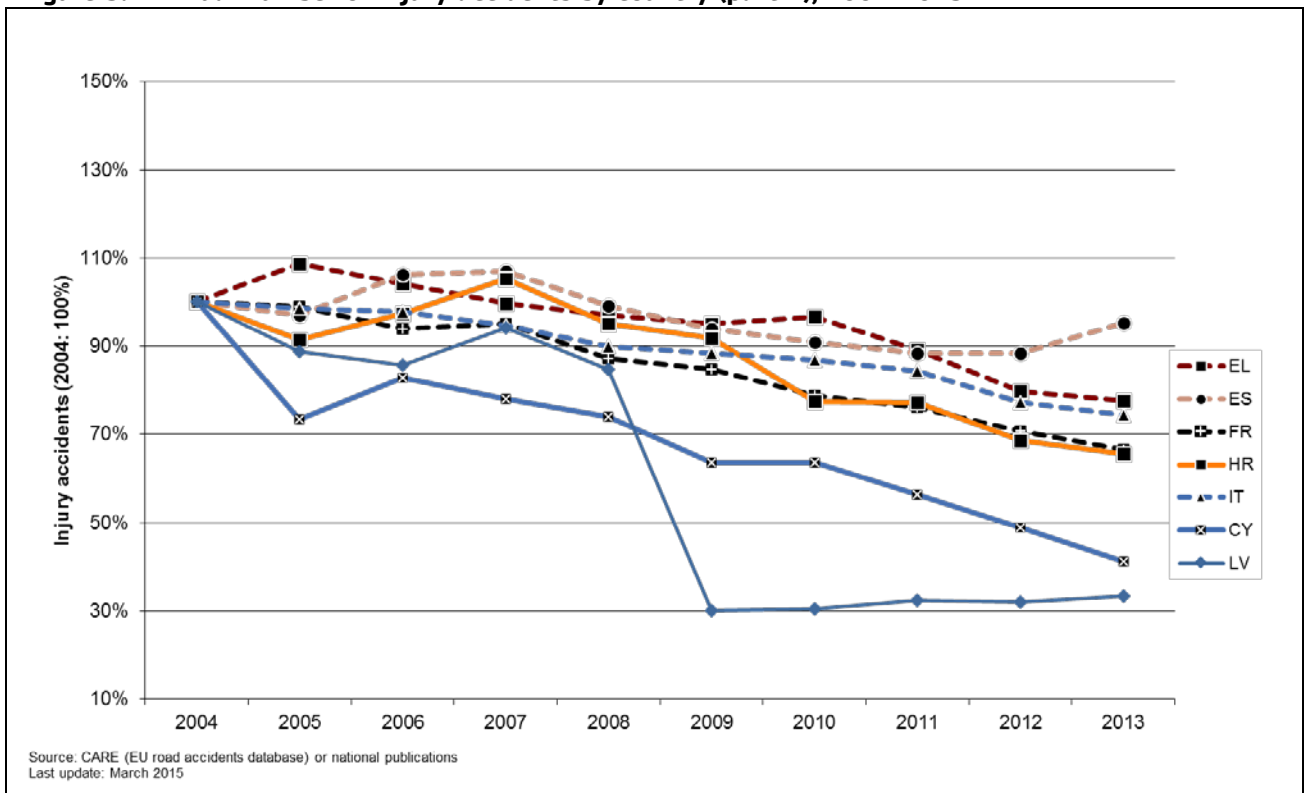


Figure 6: Annual number of injury accidents by country (part 3), 2004-2013

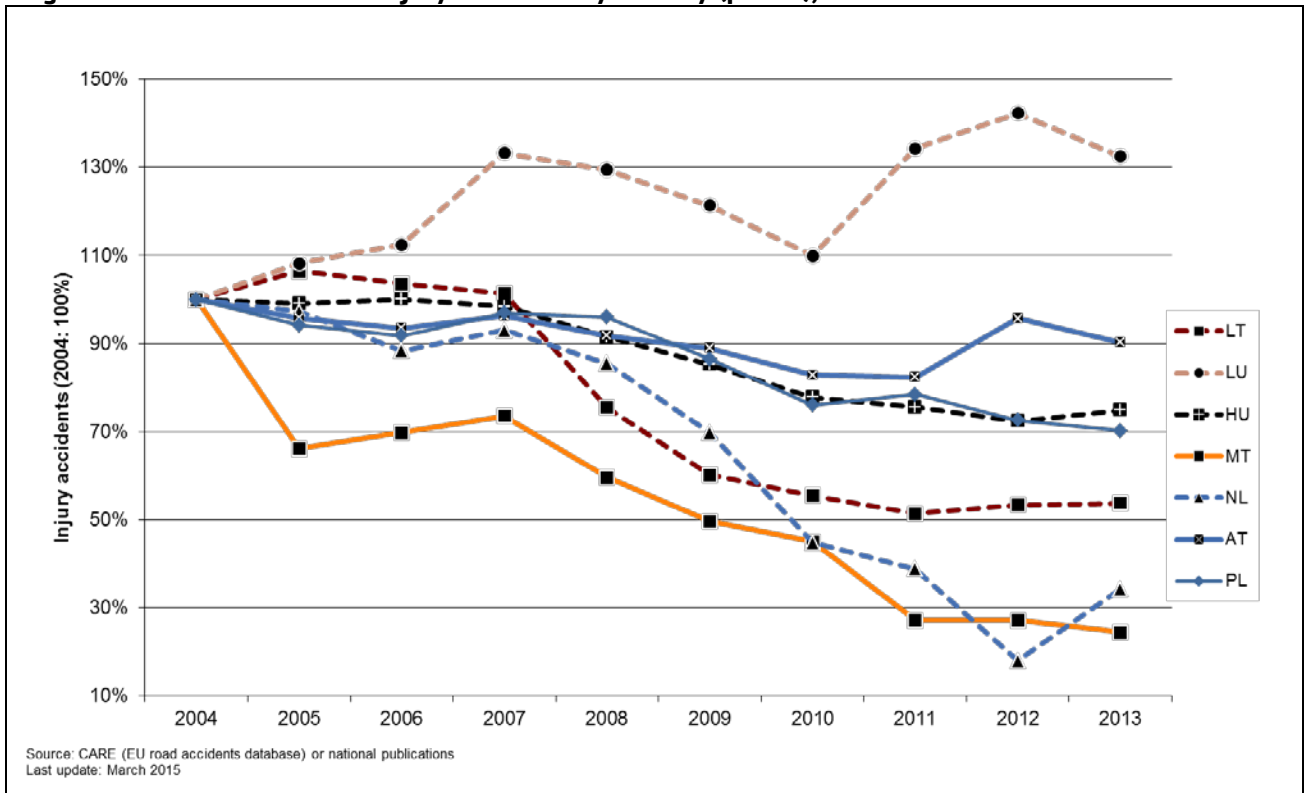


Figure 7: Annual number of injury accidents by country (part 4), 2004-2013

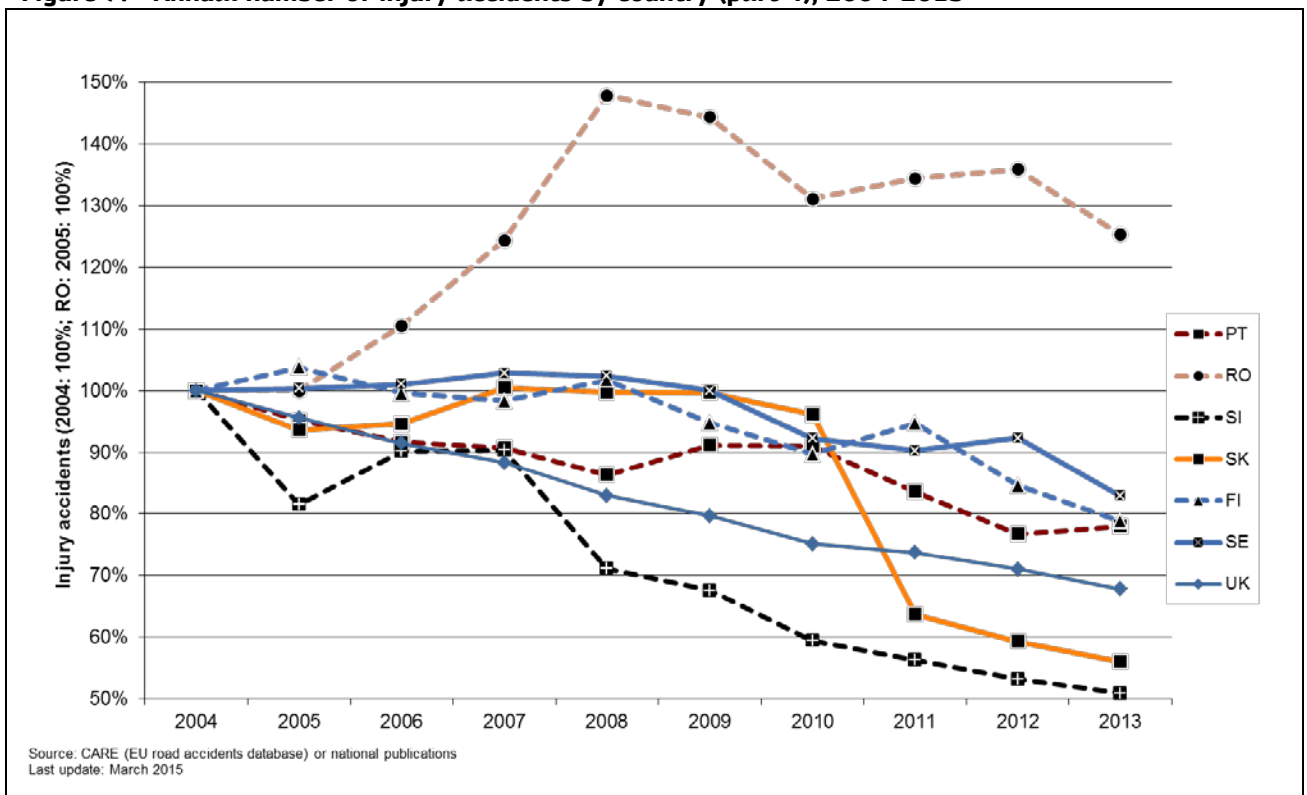


Table 2: Annual number of fatalities by country, 2004-2013

	2004	2005	2006	2007	2008	2009	2010	2011	2012	2013
BE	1.162	1.089	1.069	1.071	944	944	840	862	770	723
BG	943	957	1.043	1.006	1.061	901	776	657	601	601
CZ	1.382	1.286	1.063	1.221	1.076	901	802	772	742	655
DK	369	331	306	406	406	303	255	220	167	191
DE	5.842	5.361	5.091	4.949	4.477	4.152	3.648	4.009	3.600	3.339
EE	170	170	204	196	132	98	79	101	87	81
IE	377	400	365	338	280	238	212	186	162	190
EL	1.670	1.658	1.657	1.612	1.555	1.456	1.258	1.141	988	874
ES	4.749	4.442	4.104	3.823	3.100	2.714	2.479	2.060	1.903	1.680
FR	5.530	5.318	4.709	4.620	4.275	4.273	3.992	3.963	3.653	3.268
HR	608	597	614	619	664	548	426	418	390	368
IT	6.122	5.818	5.669	5.131	4.725	4.237	4.114	3.860	3.653	3.385
CY	117	102	86	89	82	71	60	71	51	44
LV	516	442	407	419	316	254	218	179	177	179
LT	752	773	760	740	499	370	299	296	302	256
LU	50	47	43	46	35	48	32	33	34	45
HU	1.296	1.278	1.303	1.232	996	822	740	638	606	591
MT	13	17	11	14	15	21	15	21	9	18
NL	804	750	730	709	677	644	537	546	562	476
AT	878	768	730	691	679	633	552	523	531	455
PL	5.712	5.444	5.243	5.583	5.437	4.572	3.908	4.189	3.571	3.357
PT	1.294	1.247	969	974	885	840	937	891	718	637
RO	2.442	2.629	2.587	2.800	3.061	2.796	2.377	2.018	2.042	1.861
SI	274	258	262	293	214	171	138	141	130	125
SK	603	606	614	667	622	380	353	328	352	251
FI	375	379	336	380	344	279	272	292	255	258
SE	480	440	445	471	397	358	266	319	285	260
UK	3.368	3.336	3.298	3.059	2.645	2.337	1.905	1.960	1.802	1.770
EU	47.898	45.943	43.718	43.159	39.599	35.361	31.490	30.694	28.143	25.938
Yearly Change		-4,1%	-4,8%	-1,3%	-8,2%	-10,7%	-10,9%	-2,5%	-8,3%	-7,8%
IS	23	19	31	15	12	17	8	12	9	15
LI	1	2	0	1	1	1	-	-	-	-
NO	257	224	242	233	255	212	208	168	145	187
CH	510	409	370	384	357	349	327	320	339	269

Source : CARE (EU road accidents database) or national publications

Figure 8: Annual number of fatalities by country (part 1), 2004-2013

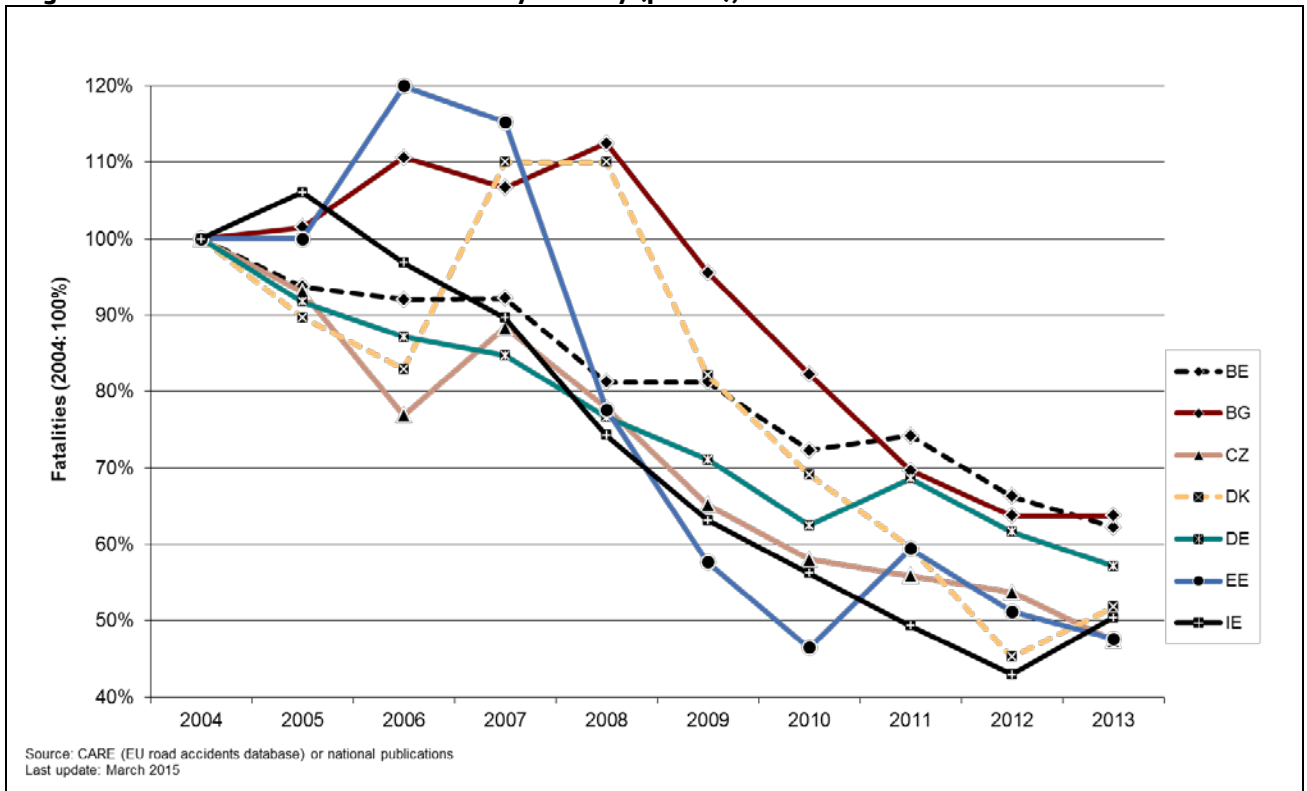


Figure 9: Annual number of fatalities by country (part 2), 2004-2013

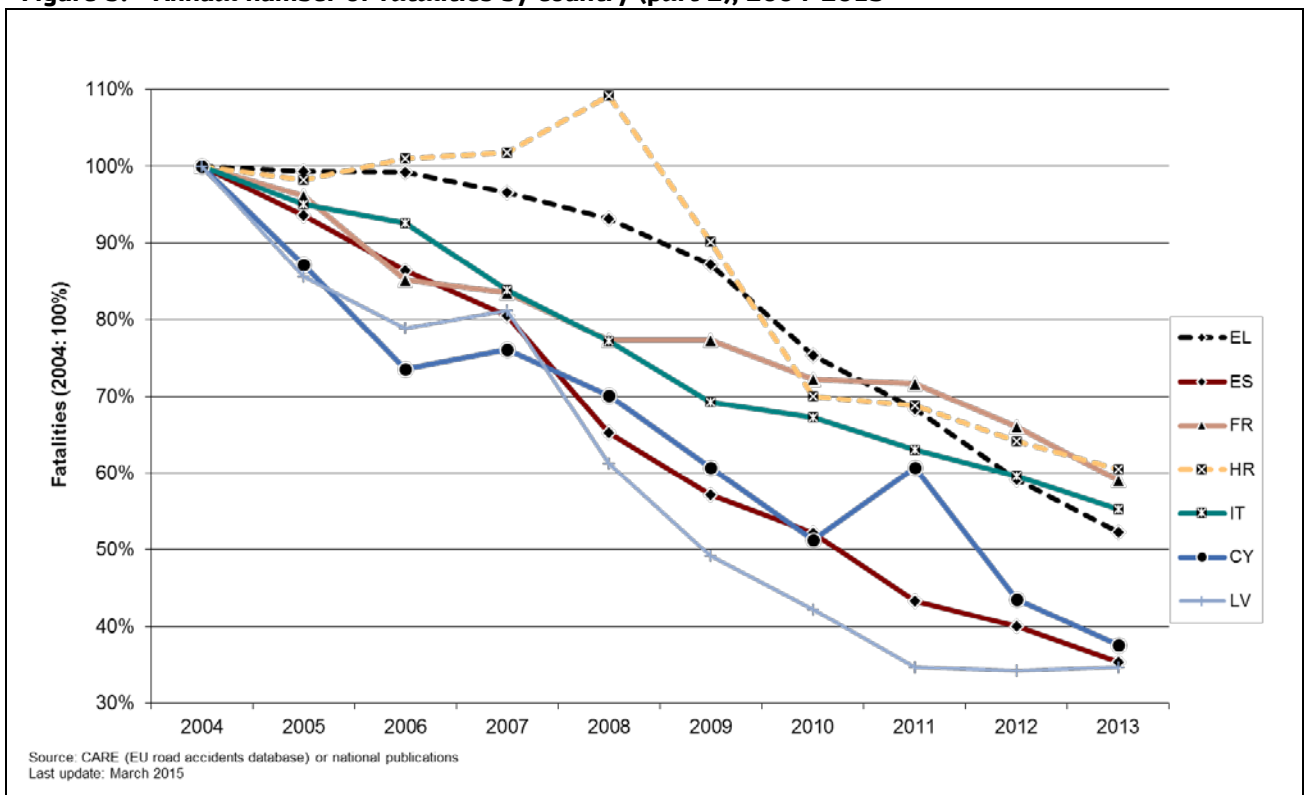


Figure 10: Annual number of fatalities by country (part 3), 2004-2013

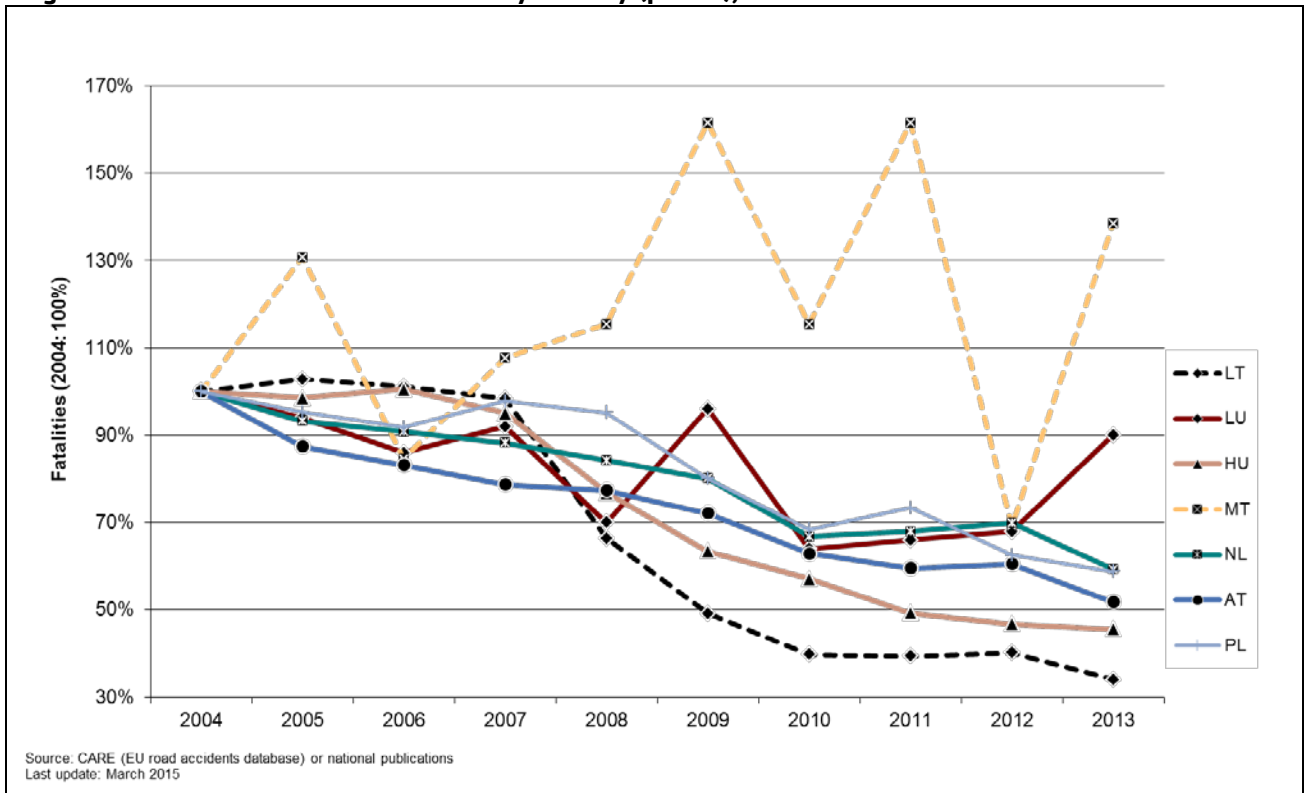


Figure 11: Annual number of fatalities by country (part 4), 2004-2013

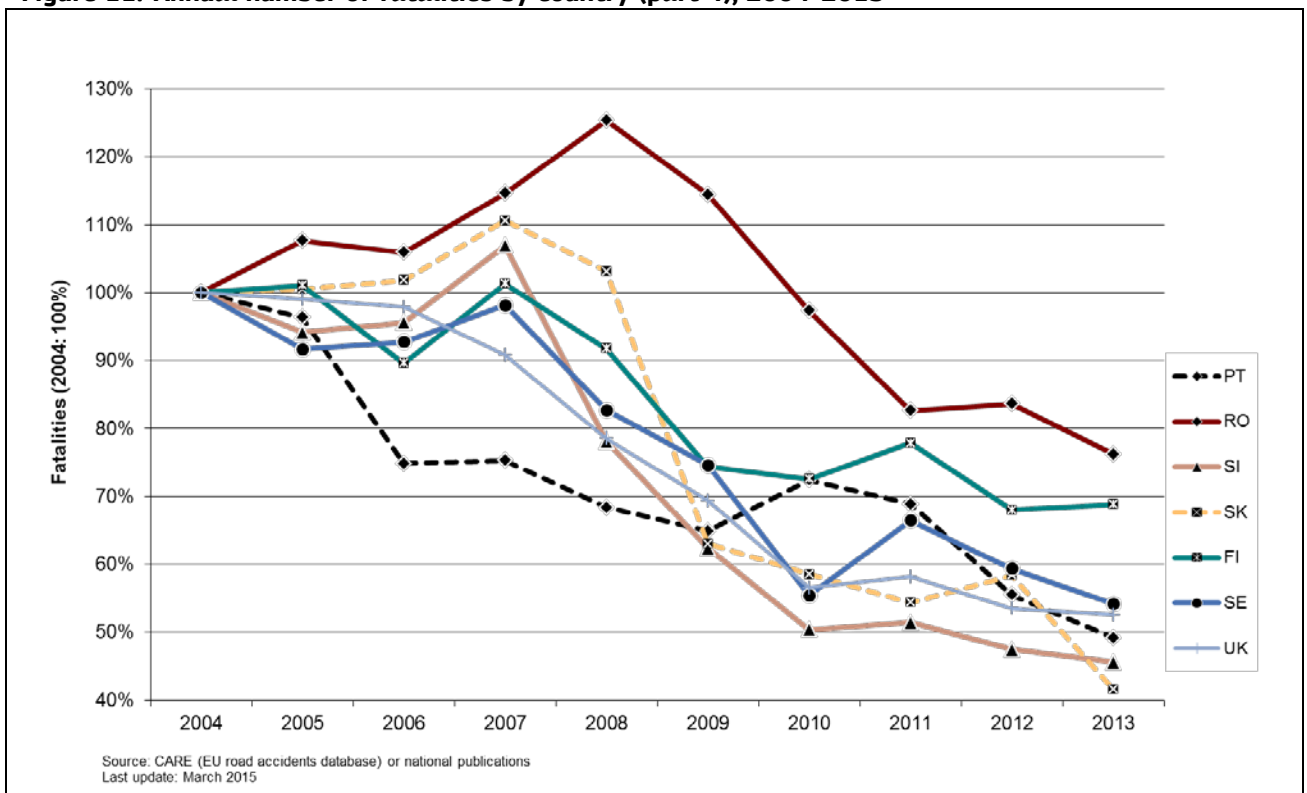


Table 3: Annual number of fatal accidents by country, 2004-2013

	2004	2005	2006	2007	2008	2009	2010	2011	2012	2013
BE	1.096	997	1.001	1.006	869	884	786	799	720	676
BG	-	-	-	-	-	748	-	-	-	-
CZ	1.224	1.150	957	1.111	983	846	742	713	687	606
DK	341	305	284	366	378	271	231	208	156	173
DE	5.361	4.984	4.717	4.609	4.117	3.867	3.387	3.724	3.375	3.131
EE	-	151	183	174	114	83	-	-	-	-
IE	335	361	321	309	254	220	185	172	152	-
EL	1.484	1.482	1.501	1.442	1.411	1.296	1.142	1.051	908	814
ES	3.643	3.377	3.119	2.957	2.384	2.117	1.953	1.816	1.709	1.488
FR	4.766	4.857	4.326	4.265	3.933	3.956	3.706	3.647	3.386	3.020
HR	-	-	-	548	585	493	402	385	355	328
IT	5.548	5.271	5.178	4.718	4.358	3.973	3.871	3.616	3.515	3.145
CY	110	-	-	88	79	64	56	67	51	41
LV	445	393	366	376	285	227	198	164	161	169
LT	-	-	-	-	-	-	-	-	-	-
LU	48	42	41	43	34	44	29	30	34	41
HU	1.167	1.139	1.173	1.107	891	752	649	563	541	540
MT	-	12	11	12	9	11	13	-	-	-
NL	747	708	678	669	630	597	500	520	532	456
AT	818	712	664	644	629	576	515	492	501	435
PL	5.179	4.878	4.663	5.028	4.862	4.144	3.504	3.775	3.246	3.062
PT	1.024	988	786	765	721	673	857	826	667	585
RO	2.175	2.293	2.274	2.462	2.655	2.464	2.103	1.818	1.833	1.657
SI	253	230	233	263	200	154	127	129	122	116
SK	-	528	547	599	555	336	345	-	-	-
FI	323	343	324	349	321	255	241	273	235	244
SE	430	406	404	426	355	336	249	292	258	247
UK	3.106	3.040	3.036	2.819	2.439	2.161	1.782	1.854	1.682	1.663
EU*	41.610	40.053	38.171	37.903	34.799	31.548	28.404	28.123	26.015	23.978
Yearly Change		-3,7%	-4,7%	-0,7%	-8,2%	-9,3%	-10,0%	-1,0%	-7,5%	-7,8%
IS	20	16	28	15	12	15	7	12	9	14
NO	227	202	226	209	237	186	190	158	139	170
CH	478	373	340	361	336	335	313	312	301	257

Source: CARE database, data available in May 2015

* Totals for EU include latest available data (Lithuanian data not included in the totals)

2.2 Interesting Details

Figure 12: Share of fatalities by area type in the EU, 2013

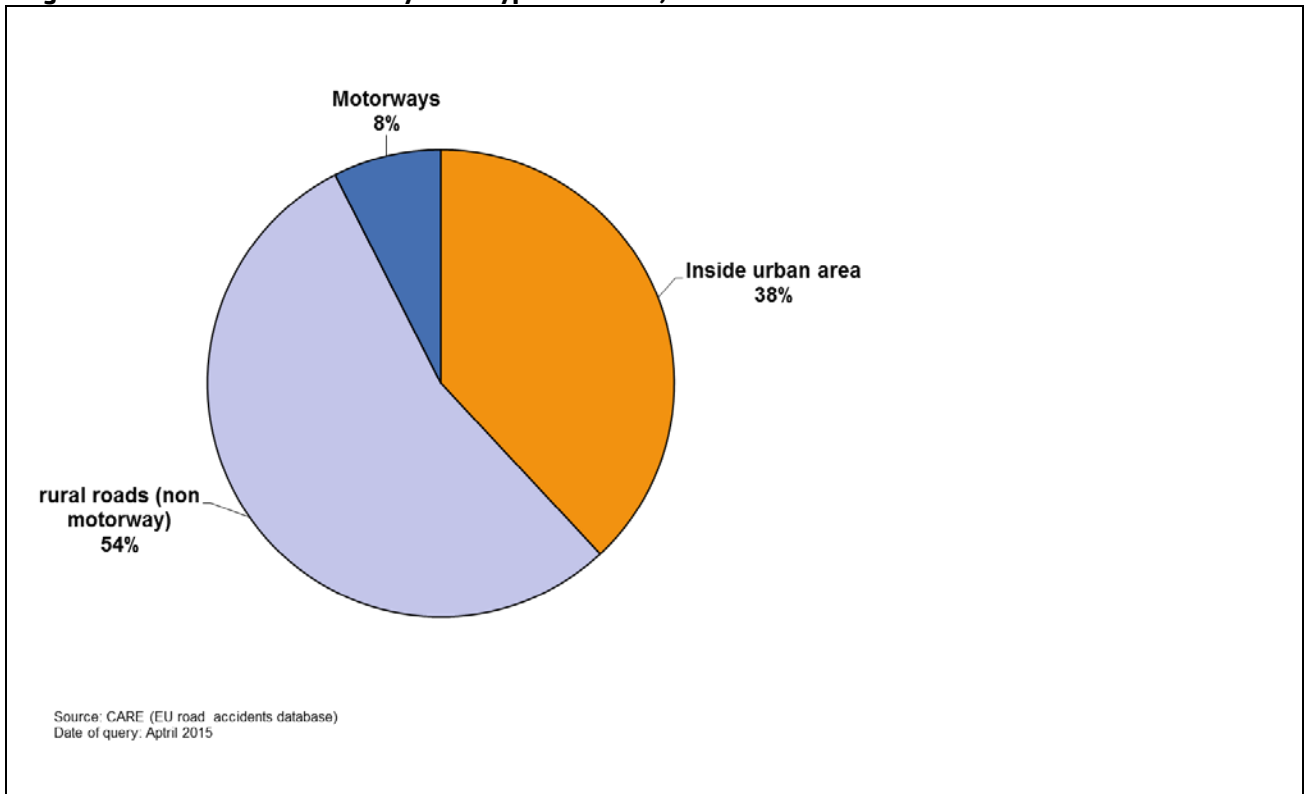


Figure 13: Distribution of male and female fatalities by person class in the EU, 2013

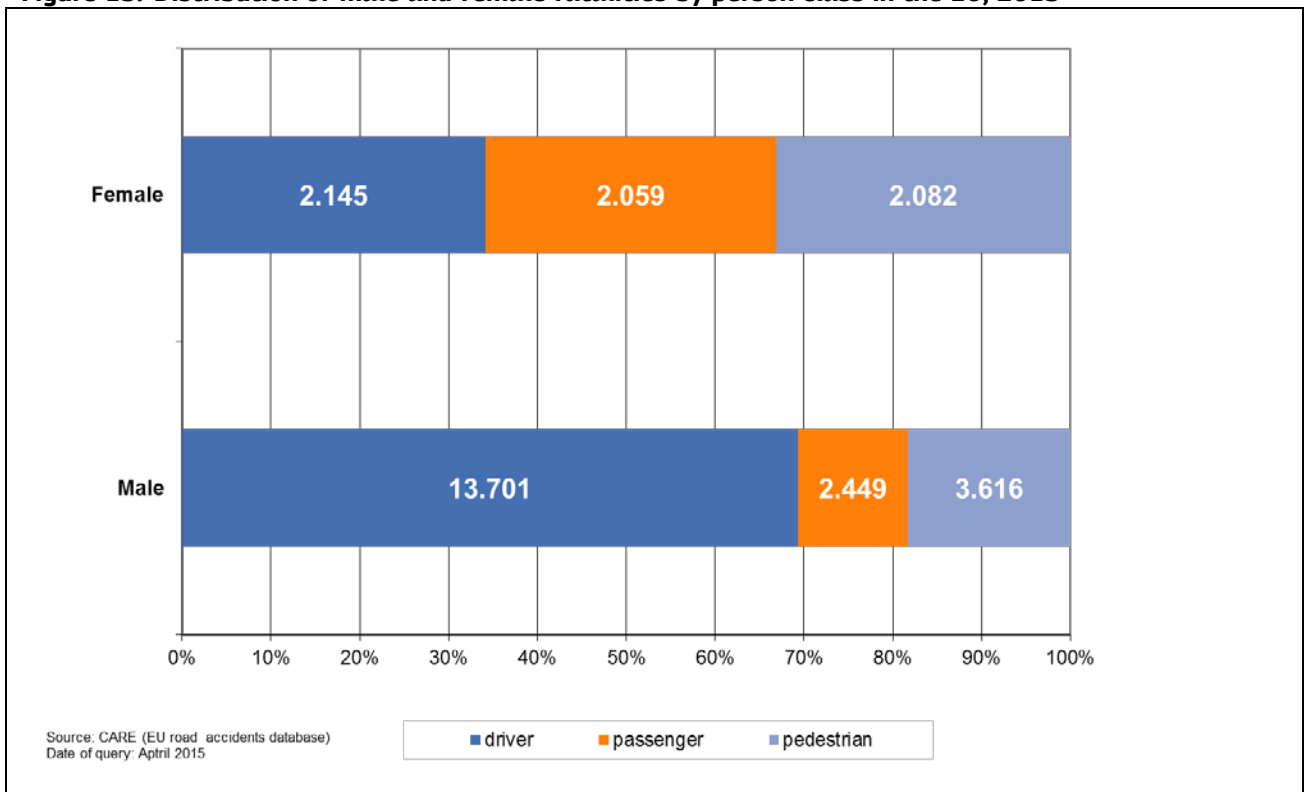
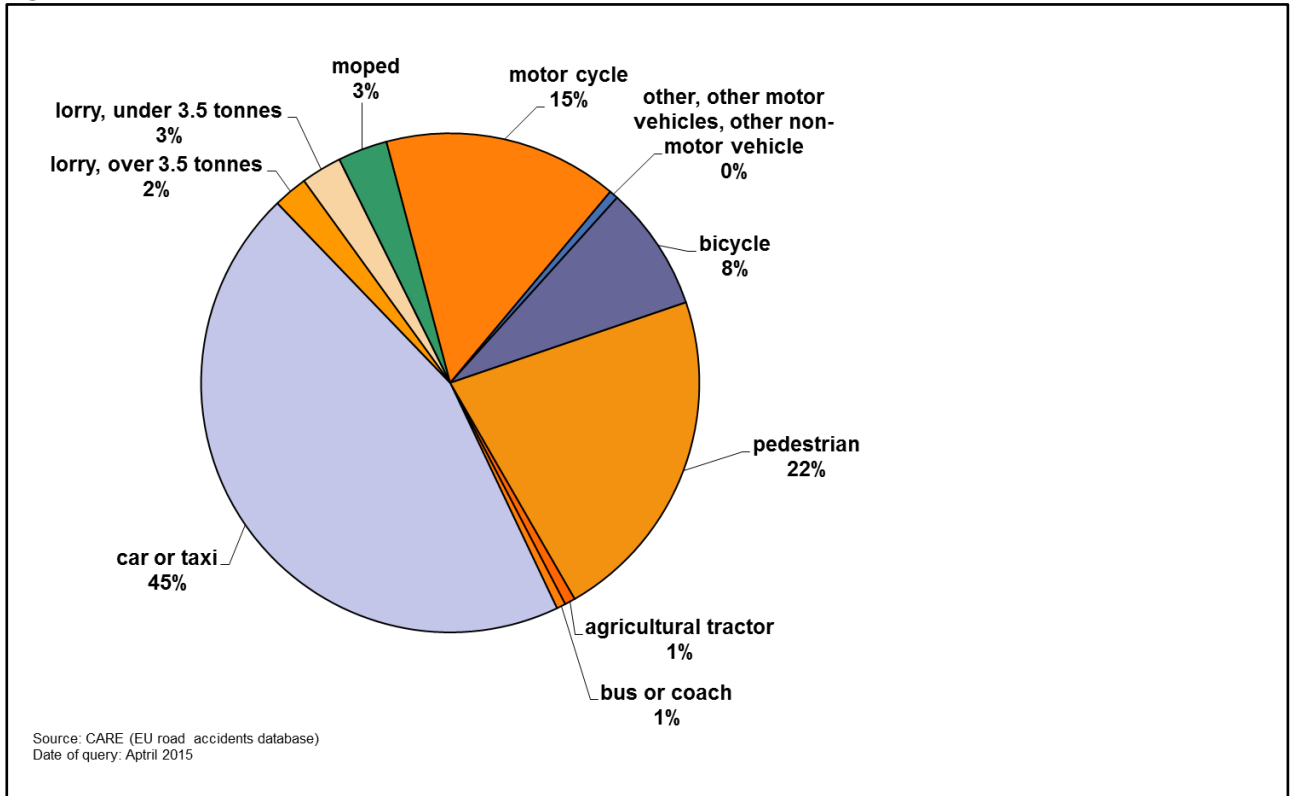


Figure 14: Distribution of fatalities by mode of transport in the EU, 2013



3 Time Series – last 10 years in detail

3.1 Time series related to mode of transport

Figure 15: Percentage change in number of fatalities by mode of transport in the EU, 2013 and 2004

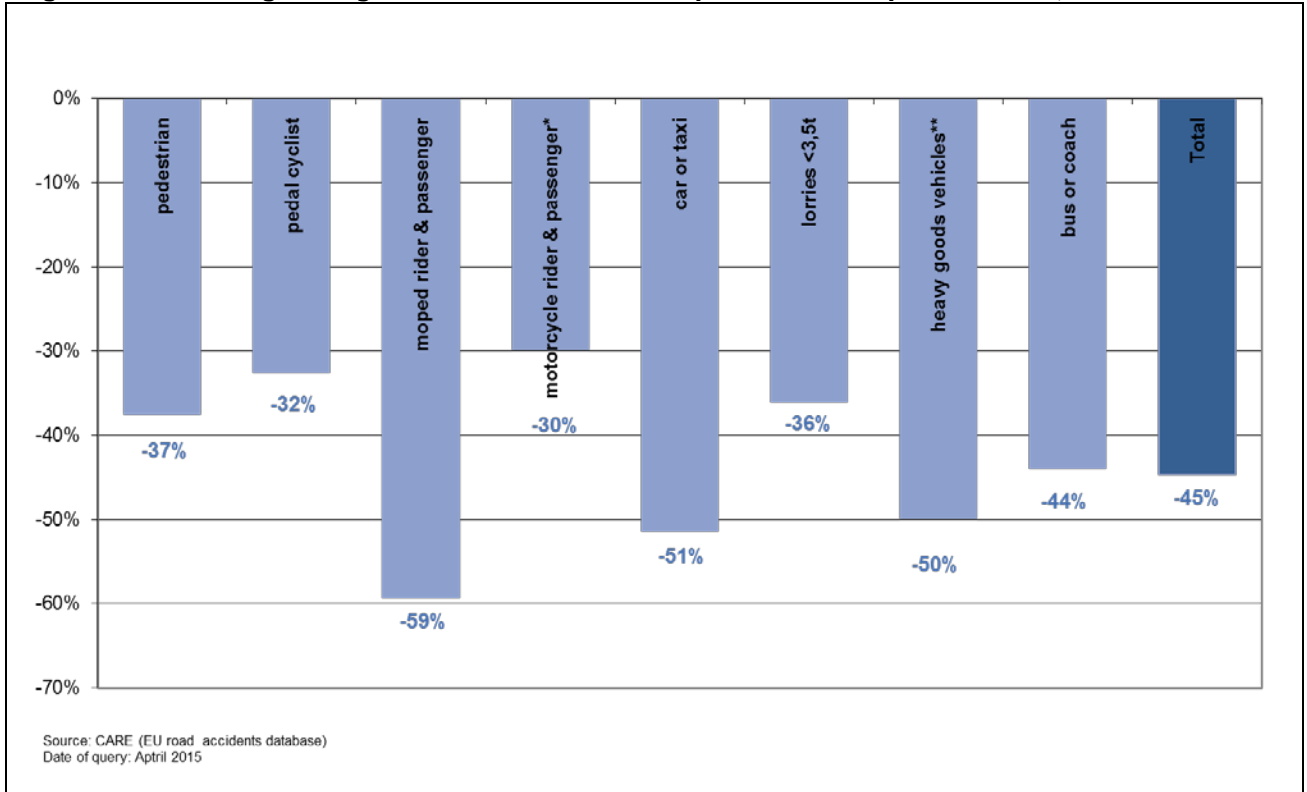


Table 4: Annual number of pedestrian fatalities by country, 2004-2013

	2004	2005	2006	2007	2008	2009	2010	2011	2012	2013
BE	101	108	122	104	99	101	106	113	104	99
BG	-	-	-	-	-	198	-	-	-	-
CZ	281	298	202	232	238	176	168	176	163	162
DK	43	44	60	68	58	52	44	33	31	34
DE	838	686	711	695	653	591	476	614	527	561
EE	-	50	64	38	41	23	-	-	-	-
IE	66	72	72	81	49	40	44	47	29	-
EL	293	234	267	255	248	202	179	223	170	151
ES	683	680	614	591	502	470	471	380	370	371
FR	581	635	535	561	548	496	485	519	489	465
HR	-	-	-	124	136	103	105	71	72	69
IT	810	786	758	627	646	667	621	589	576	549
CY	18	-	-	17	16	9	13	13	10	8
LV	197	174	153	158	105	82	79	60	62	70
LT	-	-	-	-	-	-	-	-	-	-
LU	12	2	10	7	6	12	1	6	6	5
HU	326	289	296	288	251	186	192	124	156	147
MT	-	6	4	3	1	-	-	-	-	-
NL	68	83	66	86	56	63	62	65	64	51
AT	132	97	110	108	102	101	98	87	81	82
PL	1.987	1.756	1.802	1.951	1.882	1.467	1.236	1.408	1.157	1.140
PT	233	214	156	156	155	148	195	199	159	144
RO	1.059	978	1.034	1.113	1.067	1.015	868	747	728	726
SI	35	37	36	32	39	24	26	21	19	20
SK	-	174	214	217	204	113	126	-	-	-
FI	49	45	49	48	53	30	35	41	29	34
SE	67	50	55	58	45	44	31	53	50	42
UK	694	699	697	663	591	524	415	466	429	405
EU*	9.125	8.537	8.426	8.479	7.989	6.938	6.298	6.403	5.829	5.712
Yearly Change		-6,4%	-1,3%	0,6%	-5,8%	-13,2%	-9,2%	1,7%	-9,0%	-2,0%
IS	3	1	4	1	0	2	2	4	2	1
NO	22	32	36	23	31	26	24	16	22	18
CH	95	69	76	79	59	60	75	69	75	69

Source: CARE database, data available in May 2015

* Totals for EU include latest available data (Lithuanian data not included in the totals)

Table 5: Annual number of pedal cyclist rider and passenger fatalities by country, 2004-2013

	2004	2005	2006	2007	2008	2009	2010	2011	2012	2013
BE	79	71	92	90	86	89	70	70	69	73
BG	-	-	-	-	-	29	-	-	-	-
CZ	131	115	110	116	93	84	80	63	78	74
DK	53	41	31	54	54	25	26	30	22	33
DE	475	575	486	425	456	462	381	399	406	354
EE	-	7	13	13	9	7	-	-	-	-
IE	11	10	9	15	13	7	5	9	8	-
EL	24	18	21	16	22	15	23	13	21	15
ES	88	82	72	90	59	57	67	48	74	70
FR	177	180	181	142	148	162	147	141	164	147
HR	-	-	-	28	47	29	28	28	21	23
IT	322	335	311	352	288	295	265	282	292	251
CY	2	-	-	3	6	2	2	2	1	2
LV	30	31	33	18	15	26	13	15	18	13
LT	-	-	-	-	-	-	-	-	-	-
LU	0	1	0	0	0	2	1	2	0	0
HU	183	152	153	158	109	103	92	85	84	68
MT	-	0	0	0	0	0	0	-	-	-
NL	157	151	179	147	145	138	119	144	145	112
AT	58	47	48	37	62	39	32	42	52	52
PL	691	603	509	498	433	371	280	314	300	306
PT	47	48	40	34	42	29	33	45	32	29
RO	130	206	198	179	179	157	182	140	154	161
SI	22	19	15	17	17	18	17	16	12	16
SK	-	56	52	61	46	22	27	-	-	-
FI	26	43	29	22	18	20	26	19	19	20
SE	27	38	26	33	30	20	21	21	28	14
UK	136	152	147	138	117	104	111	109	120	113
EU*	2.988	3.039	2.815	2.715	2.523	2.311	2.084	2.100	2.183	2.017
Yearly Change		1,7%	-7,4%	-3,6%	-7,1%	-8,4%	-9,8%	0,8%	3,9%	-7,6%
IS	0	0	0	0	0	0	0	0	0	0
NO	10	7	8	7	10	9	5	12	12	10
CH	42	37	35	30	27	54	34	39	36	21

Source: CARE database, data available in May 2015

* Totals for EU include latest available data (Lithuanian data not included in the totals)

Table 6: Annual number of moped rider and passenger fatalities by country, 2004-2013

	2004	2005	2006	2007	2008	2009	2010	2011	2012	2013
BE	33	30	36	26	32	25	22	20	15	13
BG	-	-	-	-	-	5	-	-	-	-
CZ	5	8	3	3	2	9	7	7	7	6
DK	46	29	24	48	30	15	11	14	14	11
DE	122	107	107	100	110	99	74	70	93	73
EE	-	2	2	4	6	3	-	-	-	-
IE	-	-	-	-	-	-	-	-	-	-
EL	55	58	57	43	41	28	36	34	35	25
ES	361	312	303	233	181	156	99	73	67	56
FR	339	356	317	324	291	299	248	220	179	159
HR	-	-	-	20	27	15	15	10	16	14
IT	456	385	346	358	292	212	206	165	127	125
CY	11	-	-	8	8	4	3	3	3	0
LV	4	5	6	4	4	1	4	5	3	3
LT	-	-	-	-	-	-	-	-	-	-
LU	1	0	0	1	0	0	0	0	0	0
HU	22	40	42	31	26	23	19	31	25	24
MT	-	-	-	-	-	-	-	-	-	-
NL	57	56	63	60	51	47	32	36	40	41
AT	44	41	39	24	25	30	18	18	19	15
PL	51	53	57	59	87	68	83	87	82	62
PT	121	106	97	71	71	58	77	71	57	51
RO	1	20	45	81	150	122	114	87	99	39
SI	5	5	12	12	8	3	7	2	3	4
SK	-	-	-	-	-	-	-	-	-	-
FI	14	4	13	11	13	11	9	10	7	5
SE	18	8	15	14	11	11	8	11	8	3
UK	26	23	29	18	21	16	10	10	12	4
EU*	1.819	1.684	1.646	1.557	1.492	1.260	1.110	992	919	741
Yearly Change		-7,4%	-2,3%	-5,4%	-4,2%	-15,5%	-11,9%	-10,6%	-7,4%	-19,4%
IS	0	0	0	0	0	0	0	1	0	0
NO	8	4	3	7	5	2	0	4	4	3
CH	9	6	11	7	9	8	4	4	3	8

Source: CARE database, data available in May 2015

* Totals for EU include latest available data (Lithuanian data not included in the totals)

Table 7: Annual number of motorcycle rider and passenger fatalities by country, 2004-2013

	2004	2005	2006	2007	2008	2009	2010	2011	2012	2013
BE	120	123	130	139	108	137	102	127	87	102
BG	-	-	-	-	-	48	-	-	-	-
CZ	97	116	113	136	121	85	92	77	86	66
DK	23	16	21	36	40	27	22	23	10	15
DE	858	875	793	807	656	650	635	708	586	568
EE	-	5	5	10	1	2	-	-	-	-
IE	49	56	29	33	29	25	17	18	19	-
EL	379	399	440	420	394	405	367	305	282	271
ES	399	472	488	640	484	437	386	348	304	302
FR	866	892	789	853	817	908	734	786	692	658
HR	-	-	-	96	100	81	51	76	62	49
IT	1.139	1.120	1.127	1.182	1.085	1.037	950	923	847	724
CY	24	-	-	16	16	19	18	13	11	15
LV	21	11	10	10	14	10	17	6	7	10
LT	-	-	-	-	-	-	-	-	-	-
LU	10	6	8	5	9	7	1	3	5	8
HU	72	100	89	112	91	73	49	52	39	58
MT	-	3	2	4	3	2	3	-	-	-
NL	84	77	57	64	67	68	60	50	53	29
AT	98	98	95	96	91	87	68	67	68	87
PL	181	157	164	215	262	290	259	292	261	253
PT	181	188	137	145	116	115	126	116	104	78
RO	19	23	35	73	90	74	59	69	62	52
SI	27	33	42	41	40	28	17	25	18	17
SK	-	45	37	54	39	34	27	-	-	-
FI	22	32	26	32	36	27	18	29	21	24
SE	56	46	55	60	51	47	37	46	31	40
UK	581	561	583	596	488	472	403	359	320	337
EU*	5.503	5.622	5.435	5.923	5.296	5.195	4.568	4.598	4.055	3.862
Yearly Change		2,2%	-3,3%	9,0%	-10,6%	-1,9%	-12,1%	0,6%	-11,8%	-4,8%
IS	2	1	3	3	1	2	1	0	0	1
NO	33	31	34	33	32	27	26	13	17	21
CH	114	86	69	82	83	78	68	68	74	55

Source: CARE database, data available in May 2015

* Totals for EU include latest available data (Lithuanian data not included in the totals)

Figure 16: Annual number of fatalities by mode of transport (drivers and passengers, vulnerable modes) in the EU, 2004-2013

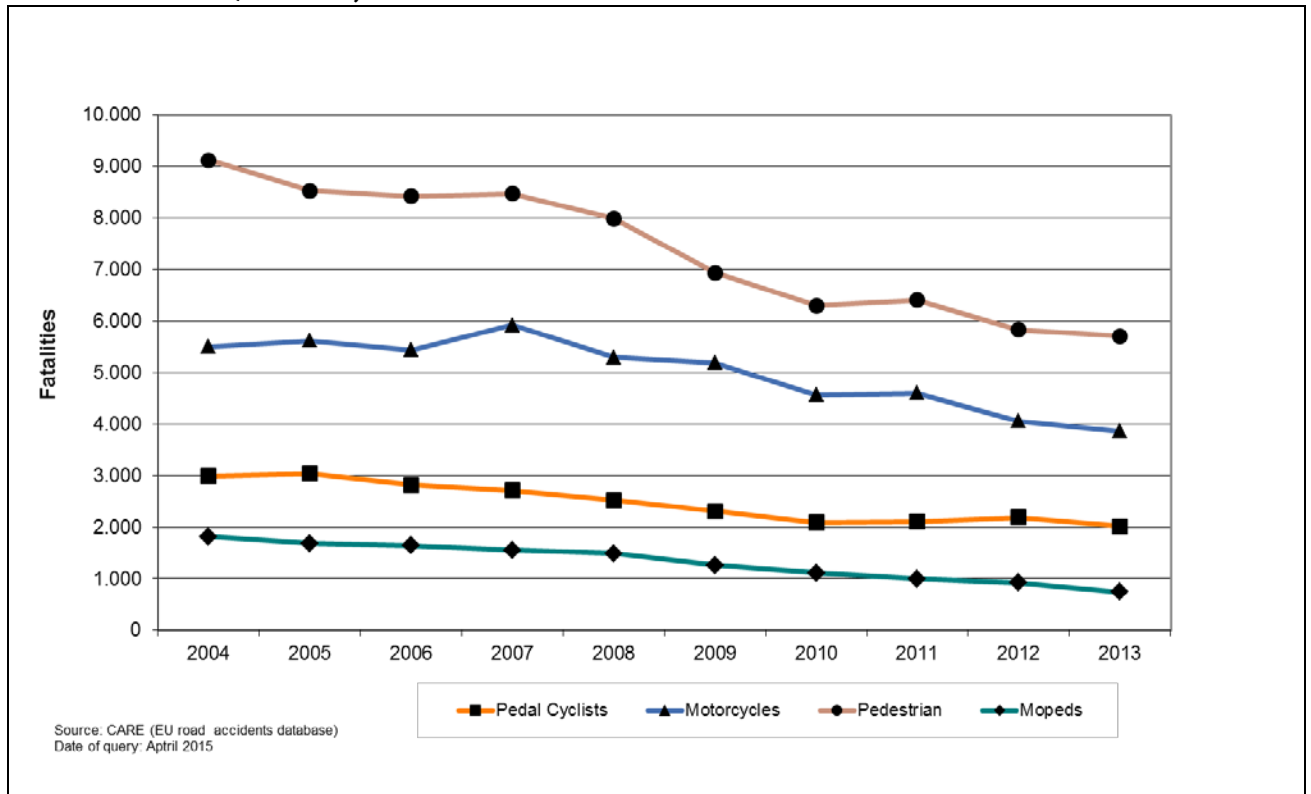


Table 8: Annual number of car and taxi driver and passenger fatalities by country, 2004-2013

	2004	2005	2006	2007	2008	2009	2010	2011	2012	2013
BE	623	624	589	550	479	464	443	457	383	340
BG	-	-	-	-	-	570	-	-	-	-
CZ	779	679	567	661	573	497	403	404	368	308
DK	186	169	138	168	196	164	135	106	81	79
DE	3.238	2.833	2.683	2.625	2.368	2.110	1.840	1.986	1.791	1.588
EE	-	88	106	122	69	54	-	-	-	-
IE	205	222	226	171	160	146	129	95	89	89
EL	775	816	722	771	708	680	545	474	383	347
ES	2.691	2.389	2.096	1.824	1.494	1.260	1.194	977	871	716
FR	3.369	3.065	2.627	2.466	2.205	2.162	2.117	2.062	1.881	1.615
HR	-	-	-	309	303	284	205	215	186	195
IT	3.032	2.830	2.781	2.320	2.115	1.793	1.832	1.673	1.695	1.483
CY	37	-	-	37	26	24	19	31	18	16
LV	228	201	182	203	167	116	91	78	72	71
LT	-	-	-	-	-	-	-	-	-	-
LU	27	38	23	27	20	26	27	21	22	30
HU	606	620	630	555	448	386	330	268	253	254
MT	-	3	5	4	4	12	9	-	-	-
NL	398	337	323	299	299	288	219	209	218	180
AT	480	432	384	378	367	325	291	289	282	194
PL	2.459	2.526	2.392	2.582	2.540	2.179	1.853	1.897	1.615	1.448
PT	537	495	375	417	358	301	367	331	255	214
RO	1.012	1.069	992	1.096	1.324	1.168	973	780	798	721
SI	124	107	96	126	82	59	44	46	53	40
SK	-	294	282	293	292	182	171	-	-	-
FI	221	231	203	241	202	165	159	172	147	152
SE	288	273	261	279	234	219	151	159	142	144
UK	1.757	1.744	1.687	1.489	1.312	1.123	859	911	829	815
EU*	24.336	23.001	21.286	20.583	18.915	16.757	15.030	14.445	13.236	11.843
Yearly Change		-5,5%	-7,5%	-3,3%	-8,1%	-11,4%	-10,3%	-3,9%	-8,4%	-10,5%
IS	15	15	20	11	10	9	4	7	6	11
NO	157	130	141	138	151	127	127	102	73	105
CH	238	178	156	162	156	136	129	119	104	103

Source: CARE database, data available in May 2015

* Totals for EU include latest available data (Lithuanian data not included in the totals)

Table 9: Annual number of heavy goods vehicles >3,5t fatalities by country, 2004-2013

	2004	2005	2006	2007	2008	2009	2010	2011	2012	2013
BE	18	16	16	25	25	20	13	15	17	13
BG	-	-	-	-	-	33	-	-	-	-
CZ	32	26	22	21	18	20	27	23	25	19
DK	3	2	2	4	2	3	2	1	0	1
DE	105	97	113	131	91	79	87	88	154	148
EE	-	7	6	3	3	6	-	-	-	-
IE	7	4	2	7	4	4	2	0	2	-
EL	19	15	23	14	19	7	14	10	11	7
ES	151	141	132	90	85	69	71	73	50	43
FR	85	90	87	68	76	54	65	67	56	57
HR	-	-	-	17	21	17	4	2	2	2
IT	244	254	251	203	219	173	53	50	46	43
CY	-	-	-	0	0	0	0	-	1	2
LV	13	6	13	12	3	6	0	2	4	3
LT	-	-	-	-	-	-	-	-	-	-
LU	0	0	2	4	0	0	1	0	0	2
HU	27	15	28	15	22	12	11	10	15	13
MT	-	0	0	0	1	0	0	-	-	-
NL	10	11	9	7	10	4	4	2	7	7
AT	21	11	15	11	3	9	7	6	4	6
PL	229	217	227	198	175	136	142	138	104	90
PT	27	31	18	25	17	29	12	14	16	18
RO	45	40	26	25	26	14	13	25	21	18
SI	4	3	2	4	0	0	1	1	0	1
SK	-	18	20	22	18	17	19	-	-	-
FI	2	6	7	7	5	6	9	5	10	6
SE	5	6	7	6	5	3	5	4	2	5
UK	47	59	41	54	24	15	30	29	30	22
EU*	1.169	1.125	1.120	1.007	905	735	631	623	635	586
Yearly Change		-3,7%	-0,5%	-10,1%	-10,1%	-18,8%	-14,2%	-1,3%	2,0%	-7,7%
IS	1	0	0	0	1	1	1	0	0	0
NO	5	11	8	5	9	9	8	8	2	11
CH	6	4	1	4	4	2	2	1	1	3

Source: CARE database, data available in May 2015

* Totals for EU include latest available data (Lithuanian data not included in the totals)

Table 10: Annual number of lorries <3,5t fatalities by country, 2004-2013

	2004	2005	2006	2007	2008	2009	2010	2011	2012	2013
BE	32	44	34	49	40	43	35	29	29	34
BG	-	-	-	-	-	-	-	-	-	-
CZ	35	36	31	45	27	25	18	15	7	15
DK	13	23	24	24	22	16	14	10	6	17
DE	128	116	122	84	92	85	75	86	-	-
EE	0	0	0	0	0	0	0	0	0	0
IE	19	18	16	25	16	13	8	17	10	-
EL	74	72	82	56	62	75	62	51	51	38
ES	292	244	262	234	189	170	116	99	98	69
FR	61	56	120	131	134	144	146	134	145	132
HR	-	-	-	-	-	-	5	10	15	2
IT	-	-	-	-	-	-	141	117	118	101
CY	-	-	-	4	8	12	5	4	4	1
LV	3	2	-	-	2	5	0	2	4	5
LT	-	-	-	-	-	-	-	-	-	-
LU	-	-	-	-	-	-	1	1	1	0
HU	41	44	36	47	33	28	24	30	20	17
MT	-	5	0	0	0	0	0	-	-	-
NL	14	20	21	35	31	24	22	18	16	15
AT	22	24	16	15	19	13	10	5	15	15
PL	-	-	-	-	-	-	-	-	-	-
PT	103	120	98	70	88	68	88	76	48	61
RO	71	116	124	105	114	87	73	64	72	61
SI	6	8	2	3	3	6	2	1	5	5
SK	-	9	3	2	2	1	1	-	-	-
FI	14	12	3	12	9	10	9	9	11	9
SE	5	11	9	9	11	7	7	10	16	5
UK	67	57	55	63	47	40	37	35	34	39
EU*	1.019	1.042	1.065	1.015	950	874	899	824	812	738
Yearly Change		2,2%	2,3%	-4,7%	-6,5%	-8,0%	2,9%	-8,4%	-1,5%	-9,1%
IS	1	1	2	0	0	1	0	0	1	1
NO	12	6	11	10	7	5	9	5	9	9
CH	0	6	8	4	5	3	6	8	6	3

Source: CARE database, data available in May 2015

* Totals for EU include latest available data (Lithuanian data not included in the totals)

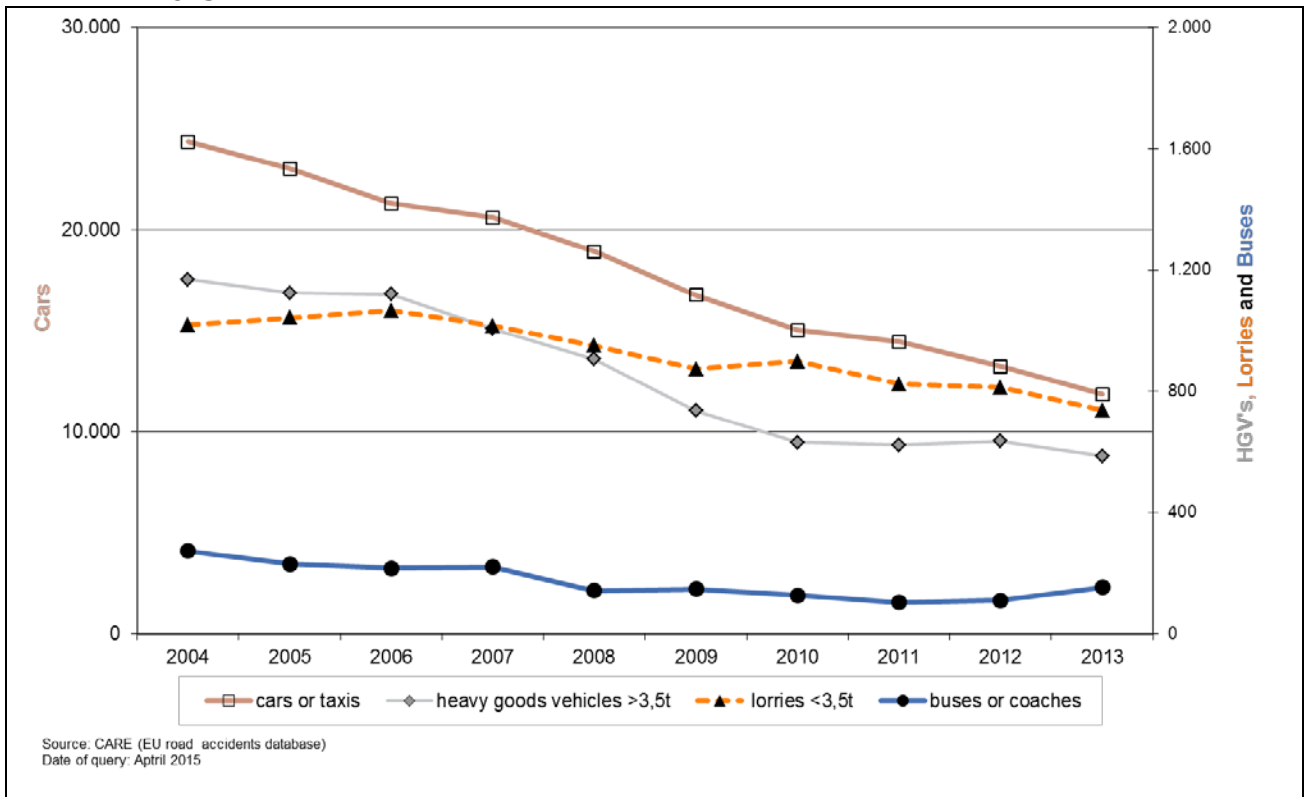
Table 11: Annual number of buses or coaches fatalities by country, 2004-2013

	2004	2005	2006	2007	2008	2009	2010	2011	2012	2013
BE	5	0	0	4	2	1	1	2	9	5
BG	-	-	-	-	-	5	-	-	-	-
CZ	17	0	10	2	0	3	1	4	2	2
DK	1	3	3	3	0	0	0	0	1	0
DE	16	9	12	24	10	11	32	10	3	11
EE	-	1	1	0	0	2	-	-	-	-
IE	0	5	3	1	0	1	1	0	1	-
EL	8	8	4	0	4	0	2	4	8	2
ES	5	26	37	15	28	21	5	4	3	11
FR	21	15	8	35	20	5	4	0	7	7
HR	-	-	-	6	17	0	0	0	8	1
IT	25	12	24	18	11	2	9	3	7	48
CY	-	-	-	0	0	0	0	0	0	0
LV	11	5	1	3	1	2	5	2	3	1
LT	-	-	-	-	-	-	-	-	-	-
LU	0	0	0	0	0	0	0	0	0	0
HU	6	4	14	14	3	3	12	30	3	6
MT	-	0	0	0	0	0	0	-	-	-
NL	0	0	1	1	3	0	1	0	1	0
AT	9	2	8	4	2	2	8	0	2	0
PL	43	52	15	17	11	19	14	12	18	18
PT	3	2	1	15	1	6	0	1	2	11
RO	26	42	19	26	6	36	10	9	10	8
SI	1	1	0	0	0	1	0	0	0	0
SK	-	8	4	8	4	12	0	-	-	-
FI	24	2	2	0	0	1	0	2	1	1
SE	4	1	10	6	1	0	2	2	2	1
UK	28	21	28	14	14	16	14	12	12	12
EU*	274	230	216	221	143	148	128	104	110	153
Yearly Change		-16,0%	-6,0%	2,3%	-35,2%	3,7%	-14,0%	-18,8%	6,4%	39,1%
IS	0	0	1	0	0	0	0	0	0	0
NO	2	1	0	5	1	1	4	4	2	5
CH	0	13	2	0	4	0	4	3	32	0

Source: CARE database, data available in May 2015

* Totals for EU include latest available data (Lithuanian data not included in the totals)

Figure 17: Annual number of drivers and passengers fatalities by mode of transport in the EU, 2004-2013



3.2 Time series related to person age and gender

Figure 18: Increase/decrease of number of fatalities by gender in the EU, 2013 and 2004

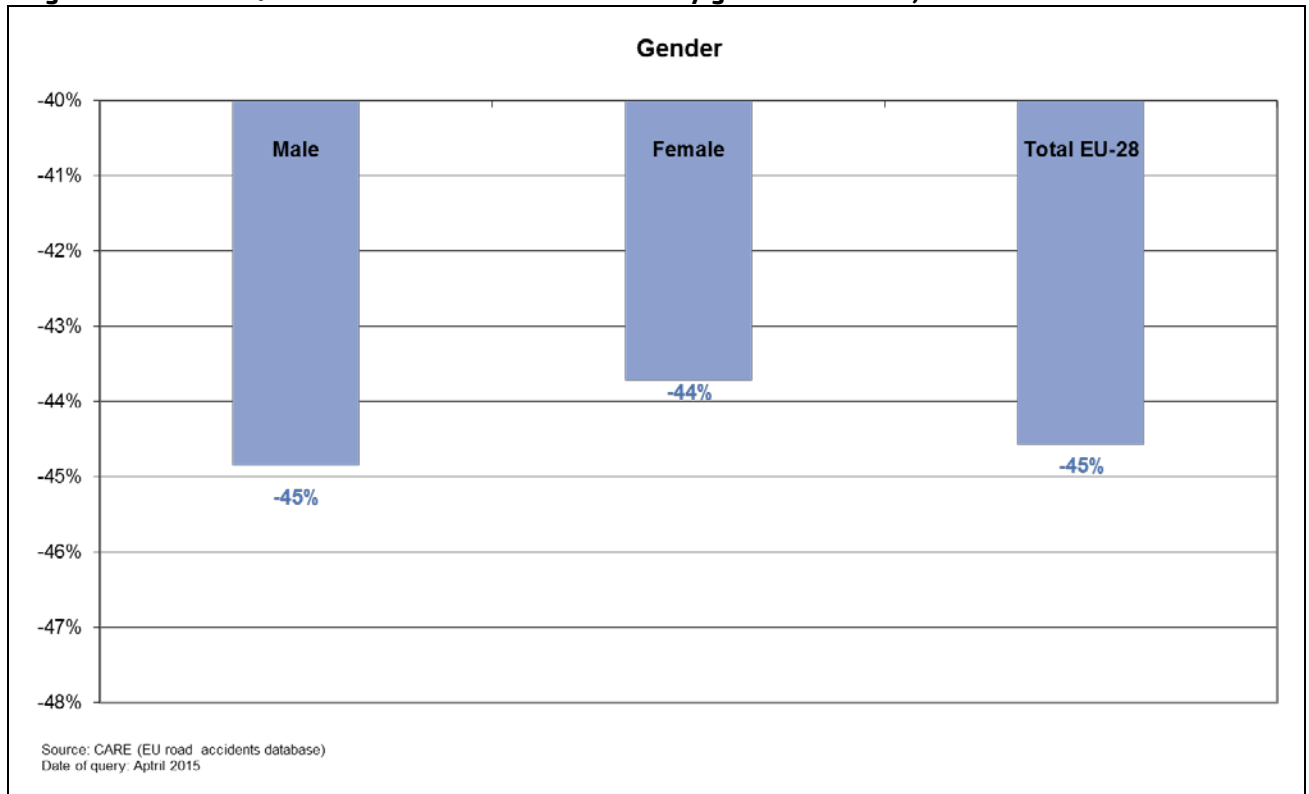


Table 12: Annual number of fatalities by age group by country, 2004-2005

	2004						2005					
	0-14	15-17	18-24	25-49	50-64	65+	0-14	15-17	18-24	25-49	50-64	65+
BE	26	32	240	509	150	201	37	31	196	473	160	186
BG	-	-	-	-	-	-	-	-	-	-	-	-
CZ	27	28	219	587	273	247	41	31	223	520	264	202
DK	20	10	67	142	50	80	13	20	52	124	52	70
DE	153	264	1.269	2.123	827	1.201	159	224	1.076	1.930	804	1.162
EE	-	-	-	-	-	-	12	5	26	73	32	21
IE	7	15	96	134	43	61	9	26	110	139	47	56
EL	43	58	304	702	226	317	44	38	326	687	219	322
ES	127	169	793	2.109	677	746	120	138	733	1.967	688	719
FR	175	198	1.276	2.175	730	962	130	218	1.206	2.032	698	1.014
HR	-	-	-	-	-	-	-	-	-	-	-	-
IT	124	213	956	2.400	837	1.293	131	211	919	2.284	783	1.199
CY	0	7	25	42	18	25	-	-	-	-	-	-
LV	6	21	71	219	95	80	10	12	63	187	76	65
LT	-	-	-	-	-	-	-	-	-	-	-	-
LU	0	2	8	24	2	14	4	1	9	21	4	8
HU	38	20	138	578	290	214	34	26	159	557	286	206
MT	-	-	-	-	-	-	3	3	5	3	0	3
NL	35	39	154	263	113	199	31	33	122	261	115	188
AT	22	37	169	332	139	177	25	48	140	296	108	151
PL	228	153	851	2.250	1.104	965	167	148	933	2.100	1.030	931
PT	48	39	213	549	197	230	31	35	221	510	215	222
RO	163	67	293	963	471	483	152	56	294	1.061	573	491
SI	9	6	49	115	46	49	10	7	44	116	40	41
SK	-	-	-	-	-	-	19	18	83	261	144	77
FI	13	21	74	109	61	97	21	16	53	140	58	91
SE	14	19	78	159	71	139	10	19	67	153	84	104
UK	147	199	728	1.290	397	589	125	222	700	1.244	420	616
EU*	1.515	1.692	8.477	18.727	7.232	8.738	1.394	1.643	8.077	17.796	7.157	8.438
Yearly Change							-8,7%	-3,0%	-4,9%	-5,2%	-1,0%	-3,6%
IS	3	1	4	9	2	4	0	2	6	3	6	2
NO	10	22	52	87	32	54	4	16	46	83	33	42
CH	20	21	108	165	73	123	14	17	77	135	58	108

Source: CARE database, data available in May 2015

* Totals for EU include latest available data (Lithuanian data not included in the totals)

Table 13: Annual number of fatalities by age group by country, 2006-2007

	2006						2007					
	0-14	15-17	18-24	25-49	50-64	65+	0-14	15-17	18-24	25-49	50-64	65+
BE	32	21	195	482	141	193	30	27	215	464	159	170
BG	-	-	-	-	-	-	-	-	-	-	-	-
CZ	32	18	183	432	215	173	25	29	190	523	230	201
DK	13	19	65	91	46	72	20	18	58	145	69	95
DE	136	173	1.011	1.824	791	1.154	111	176	971	1.799	736	1.153
EE	6	5	35	73	53	32	6	8	41	70	27	41
IE	15	18	95	133	36	66	15	14	76	123	45	58
EL	36	40	305	725	197	327	42	43	280	685	207	330
ES	109	131	601	1.952	591	671	99	135	550	1.817	566	604
FR	120	183	1.037	1.739	644	921	150	166	984	1.789	627	896
HR	-	-	-	-	-	-	26	17	135	247	83	110
IT	110	186	825	2.290	802	1.220	95	190	723	2.187	681	1.105
CY	-	-	-	-	-	-	4	6	24	27	12	16
LV	14	11	59	165	74	61	11	15	44	169	90	73
LT	-	-	-	-	-	-	-	-	-	-	-	-
LU	0	0	8	24	5	3	2	2	8	22	4	7
HU	42	24	134	565	307	216	37	30	139	541	264	209
MT	0	1	3	5	1	1	0	0	4	5	0	3
NL	37	33	112	233	105	209	36	32	134	223	103	181
AT	23	35	129	257	130	156	13	32	135	254	112	145
PL	151	150	895	1.959	1.054	888	156	181	953	2.112	1.140	945
PT	22	10	125	404	178	215	27	11	148	385	171	225
RO	145	55	293	1.035	555	504	117	52	402	1.040	569	617
SI	9	10	54	114	42	33	6	6	64	126	40	51
SK	13	8	100	263	131	95	28	6	87	274	129	97
FI	5	21	67	104	68	71	14	18	75	118	76	79
SE	16	24	75	142	93	95	10	22	86	148	100	105
UK	147	207	706	1.234	423	572	96	192	639	1.142	407	575
EU*	1.293	1.439	7.429	16.886	6.932	8.232	1.206	1.461	7.323	16.803	6.802	8.249
Yearly Change	-7,9%	-14,2%	-8,7%	-5,4%	-3,2%	-2,5%	-7,2%	1,5%	-1,4%	-0,5%	-1,9%	0,2%
IS	1	3	7	11	5	4	1	0	2	7	2	3
NO	9	14	39	76	39	65	10	10	33	89	40	51
CH	16	18	62	117	56	101	14	16	61	105	71	117

Source: CARE database, data available in May 2015

* Totals for EU include latest available data (Lithuanian data not included in the totals)

Table 14: Annual number of fatalities by age group by country, 2008-2009

	2008						2009					
	0-14	15-17	18-24	25-49	50-64	65+	0-14	15-17	18-24	25-49	50-64	65+
BE	35	28	177	411	139	149	16	21	147	355	150	163
BG	-	-	-	-	-	-	30	33	157	368	155	158
CZ	19	14	193	437	209	186	16	13	133	405	166	167
DK	19	14	69	146	61	97	10	17	53	121	41	61
DE	102	174	887	1.515	727	1.066	90	133	796	1.351	678	1.104
EE	3	4	28	40	28	29	4	2	21	39	13	18
IE	18	20	75	91	24	47	10	9	64	96	31	26
EL	35	41	246	658	221	329	43	37	242	617	211	275
ES	83	95	469	1.399	465	544	61	70	357	1.273	412	507
FR	114	136	956	1.624	622	823	122	189	901	1.653	612	796
HR	20	16	130	261	132	105	24	18	102	187	101	116
IT	85	163	634	1.937	660	1.099	71	121	579	1.596	669	1.111
CY	1	5	17	35	10	14	4	2	19	29	3	14
LV	12	12	48	126	63	46	7	4	31	115	48	35
LT	-	-	-	-	-	-	-	-	-	-	-	-
LU	0	0	8	16	5	4	6	0	10	12	11	9
HU	24	32	103	407	237	179	22	16	81	353	184	166
MT	0	0	2	5	0	2	1	0	2	5	2	5
NL	23	32	107	228	113	174	23	26	126	191	91	187
AT	12	26	134	220	115	172	15	29	99	229	102	159
PL	146	185	948	1.982	1.163	962	128	120	833	1.668	970	810
PT	23	11	113	363	174	197	23	19	109	331	150	205
RO	137	58	439	1.182	678	571	125	58	416	1.000	597	593
SI	4	10	38	87	41	34	2	4	30	61	35	39
SK	23	9	92	198	111	72	9	5	53	122	80	51
FI	8	26	50	111	56	93	6	23	51	84	46	69
SE	6	13	64	142	70	102	9	25	60	100	72	92
UK	110	160	542	989	344	499	69	126	467	913	330	432
EU*	1.092	1.317	6.726	14.978	6.623	7.754	946	1.121	5.940	13.273	5.961	7.368
Yearly Change	-10,5%	-11,0%	-8,9%	-12,2%	-2,7%	-6,4%	-15,4%	-17,5%	-13,2%	-12,8%	-11,1%	-5,2%
IS	0	0	3	2	3	4	0	1	1	8	4	3
NO	8	11	59	84	44	48	8	17	46	71	33	37
CH	10	12	44	123	65	103	21	5	68	97	68	90

Source: CARE database, data available in May 2015

* Totals for EU include latest available data (Lithuanian data not included in the totals)

Table 15: Annual number of fatalities by age group by country, 2010-2011

	2010						2011					
	0-14	15-17	18-24	25-49	50-64	65+	0-14	15-17	18-24	25-49	50-64	65+
BE	23	21	171	343	124	153	35	14	143	353	127	183
BG	-	-	-	-	-	-	-	-	-	-	-	-
CZ	17	17	125	329	142	172	12	16	129	309	160	141
DK	9	8	42	81	48	67	9	8	35	63	42	63
DE	104	101	690	1.218	624	910	86	116	737	1.302	723	1.044
EE	-	-	-	-	-	-	-	-	-	-	-	-
IE	6	7	56	83	26	30	7	10	39	76	17	37
EL	30	39	186	521	190	268	22	28	163	458	185	260
ES	79	49	311	1.087	407	527	43	29	234	880	368	486
FR	130	161	831	1.513	592	765	128	144	813	1.517	602	759
HR	12	9	58	170	80	97	14	14	81	174	61	74
IT	70	121	547	1.573	645	1.064	61	105	496	1.417	667	1.038
CY	1	2	12	27	7	11	1	1	14	36	7	12
LV	9	2	35	75	53	36	5	4	20	70	32	43
LT	-	-	-	-	-	-	-	-	-	-	-	-
LU	0	0	10	13	6	3	1	2	8	12	7	3
HU	20	10	73	304	184	137	12	8	73	227	172	146
MT	1	0	4	7	1	0	1	0	4	7	1	0
NL	16	20	90	171	86	154	18	19	86	152	83	188
AT	10	27	102	178	95	140	13	24	76	164	96	150
PL	112	122	677	1.419	871	674	102	106	718	1.580	950	703
PT	18	7	88	378	168	277	19	11	105	303	189	264
RO	95	50	307	849	577	494	83	36	251	723	468	453
SI	2	4	19	54	29	30	6	4	17	62	29	23
SK	11	7	59	126	67	48	-	-	-	-	-	-
FI	7	13	48	93	47	64	8	14	51	92	45	82
SE	9	5	47	82	52	71	10	9	57	96	56	91
UK	42	93	362	701	330	377	52	77	341	746	305	439
EU*	867	930	5.128	11.802	5.619	6.745	793	841	4.928	11.352	5.627	6.906
Yearly Change	-9,1%	-20,6%	-15,8%	-12,5%	-6,1%	-9,2%	-9,3%	-10,5%	-4,1%	-4,0%	0,1%	2,3%
IS	0	0	3	1	2	2	2	4	0	2	2	2
NO	3	7	42	75	39	42	7	6	27	57	34	37
CH	8	12	36	105	65	101	10	9	41	80	62	118

Source: CARE database, data available in May 2015

* Totals for EU include latest available data (Lithuanian data not included in the totals)

Table 16: Annual number of fatalities by age group by country, 2012-2013

	2012						2013					
	0-14	15-17	18-24	25-49	50-64	65+	0-14	15-17	18-24	25-49	50-64	65+
BE	16	18	128	279	151	177	18	8	119	318	108	151
BG	-	-	-	-	-	-	-	-	-	-	-	-
CZ	15	17	96	311	144	157	11	10	96	242	136	155
DK	7	6	31	51	28	44	13	6	25	56	38	53
DE	73	113	611	1.144	665	994	58	89	493	1.065	633	999
EE	-	-	-	-	-	-	-	-	-	-	-	-
IE	2	7	35	61	20	36	-	-	-	-	-	-
EL	21	21	143	389	147	248	17	27	112	319	149	234
ES	53	32	175	783	337	506	46	20	145	643	329	479
FR	115	131	753	1.345	564	745	97	102	636	1.213	532	688
HR	8	10	48	150	98	79	10	10	58	132	83	75
IT	52	85	423	1.400	656	1.068	55	68	400	1.167	609	1.009
CY	0	2	10	23	7	9	1	0	18	12	5	8
LV	6	5	16	67	40	34	7	1	14	75	32	40
LT	-	-	-	-	-	-	-	-	-	-	-	-
LU	1	2	6	14	2	9	2	0	5	19	10	9
HU	20	11	42	237	170	121	7	14	50	227	156	135
MT	-	-	-	-	-	-	-	-	-	-	-	-
NL	24	13	76	171	91	187	8	14	81	126	80	164
AT	8	24	84	156	105	154	10	14	56	148	85	142
PL	90	87	585	1.327	823	653	91	83	551	1.194	786	647
PT	14	10	65	274	155	195	11	8	65	215	142	193
RO	90	52	231	740	470	457	76	40	220	704	397	422
SI	3	2	19	46	34	26	3	2	22	43	28	27
SK	-	-	-	-	-	-	-	-	-	-	-	-
FI	7	14	41	84	51	58	6	12	36	79	52	73
SE	7	10	41	107	49	71	4	7	40	77	56	76
UK	56	66	344	631	283	422	41	48	348	642	282	409
EU*	734	780	4.244	10.330	5.326	6.674	640	632	3.866	9.317	4.984	6.448
Yearly Change	-8,1%	-7,8%	-16,1%	-9,9%	-5,6%	-3,5%	-14,7%	-23,5%	-9,8%	-10,9%	-6,9%	-3,5%
IS	0	0	2	2	1	4	2	3	2	4	2	2
NO	4	6	20	60	27	28	4	6	29	60	44	44
CH	31	6	39	92	78	93	12	2	30	68	57	100

Source: CARE database, data available in May 2015

* Totals for EU include latest available data (Lithuanian data not included in the totals)

Table 17: Annual number of female fatalities by country, 2004-2013

	2004	2005	2006	2007	2008	2009	2010	2011	2012	2013
BE	250	260	248	215	221	234	203	192	179	173
BG	-	-	-	-	-	201	-	-	-	-
CZ	326	298	225	275	259	225	177	187	167	150
DK	98	80	87	105	107	91	85	59	45	65
DE	1.571	1.445	1.371	1.309	1.229	1.102	997	1.038	950	905
EE	-	42	50	45	34	26	-	-	-	-
IE	102	102	97	85	75	56	46	56	54	-
EL	364	355	290	338	304	250	245	221	182	187
ES	1.124	958	899	823	676	621	556	465	449	392
FR	1.349	1.314	1.155	1.118	1.013	1.041	953	939	923	763
HR	-	-	-	-	157	141	102	84	69	84
IT	1.245	1.243	1.277	1.005	960	926	846	855	738	694
CY	21	-	-	14	17	12	10	13	14	9
LV	141	118	97	100	77	42	26	8	47	39
LT	-	-	-	-	-	-	-	-	-	-
LU	16	17	10	7	8	13	8	11	8	11
HU	302	308	293	314	237	207	181	169	163	159
MT	-	4	0	1	3	5	5	-	-	-
NL	224	210	212	192	179	175	145	162	146	131
AT	215	195	190	161	170	155	143	138	153	113
PL	1.291	1.243	1.232	1.333	1.321	1.109	913	938	845	792
PT	264	233	182	188	209	173	203	216	152	135
RO	601	688	661	740	765	694	575	473	500	487
SI	54	71	42	59	36	39	34	28	33	31
SK	-	144	134	156	111	88	92	-	-	-
FI	118	96	95	101	79	71	68	81	64	66
SE	116	113	112	127	111	92	67	78	67	65
UK	829	816	806	752	682	597	497	499	429	456
EU*	11.169	10.732	10.138	9.921	9.240	8.386	7.404	7.234	6.701	6.285
Yearly Change		-3,9%	-5,5%	-2,1%	-6,9%	-9,2%	-11,7%	-2,3%	-7,4%	-6,2%
IS	7	6	11	2	2	3	4	4	2	8
NO	69	68	73	70	60	45	50	50	38	52
CH	115	88	90	82	90	80	83	80	90	78

Source: CARE database, data available in May 2015

* Totals for EU include latest available data (Lithuanian data not included in the totals)

Table 18: Annual number of male fatalities by country, 2004-2013

	2004	2005	2006	2007	2008	2009	2010	2011	2012	2013
BE	908	823	818	850	717	705	629	659	589	549
BG	-	-	-	-	-	700	-	-	-	-
CZ	1.056	988	838	946	817	659	607	574	560	492
DK	271	251	219	300	299	212	170	161	122	126
DE	4.264	3.913	3.717	3.638	3.247	3.050	2.651	2.971	2.650	2.433
EE	-	126	152	147	97	71	-	-	-	-
IE	259	286	262	250	199	182	161	130	108	108
EL	1.303	1.296	1.361	1.268	1.244	1.201	1.013	920	806	692
ES	3.551	3.446	3.192	2.985	2.412	2.087	1.917	1.589	1.447	1.279
FR	4.181	4.004	3.554	3.502	3.262	3.232	3.039	3.024	2.730	2.505
HR	-	-	-	-	505	406	324	334	324	284
IT	4.877	4.575	4.392	4.126	3.765	3.311	3.268	3.005	3.015	2.691
CY	96	96	75	75	65	59	50	58	37	35
LV	375	324	309	317	239	166	121	109	128	137
LT	-	-	-	-	-	-	-	-	-	-
LU	34	30	33	38	27	35	24	22	26	34
HU	993	963	1.008	916	757	612	555	467	438	429
MT	-	13	11	11	6	10	8	-	-	-
NL	568	540	518	517	498	469	392	384	416	345
AT	663	573	540	530	509	478	409	385	378	342
PL	4.395	4.175	3.993	4.241	4.099	3.456	2.977	3.243	2.725	2.563
PT	1.028	1.005	779	779	674	666	734	675	564	501
RO	1.841	1.941	1.926	2.060	2.300	2.102	1.802	1.545	1.542	1.374
SI	220	187	220	232	178	132	104	113	97	94
SK	-	462	480	505	495	296	279	-	-	-
FI	257	283	241	279	265	208	204	211	191	192
SE	364	324	333	344	286	266	199	241	218	195
UK	2.539	2.520	2.492	2.307	1.962	1.740	1.408	1.461	1.373	1.314
EU*	35.850	34.350	32.668	32.367	29.624	26.510	23.816	23.339	21.542	19.772
Yearly Change		-4,2%	-4,9%	-0,9%	-8,5%	-10,5%	-10,2%	-2,0%	-7,7%	-8,2%
IS	16	13	20	13	10	14	4	8	7	7
NO	188	156	169	163	195	167	158	118	107	135
CH	395	321	280	302	267	269	244	240	249	191

Source: CARE database, data available in May 2015

* Totals for EU include latest available data (Lithuanian data not included in the totals)

Figure 19: Annual distribution of fatalities by gender in the EU, 2004-2013

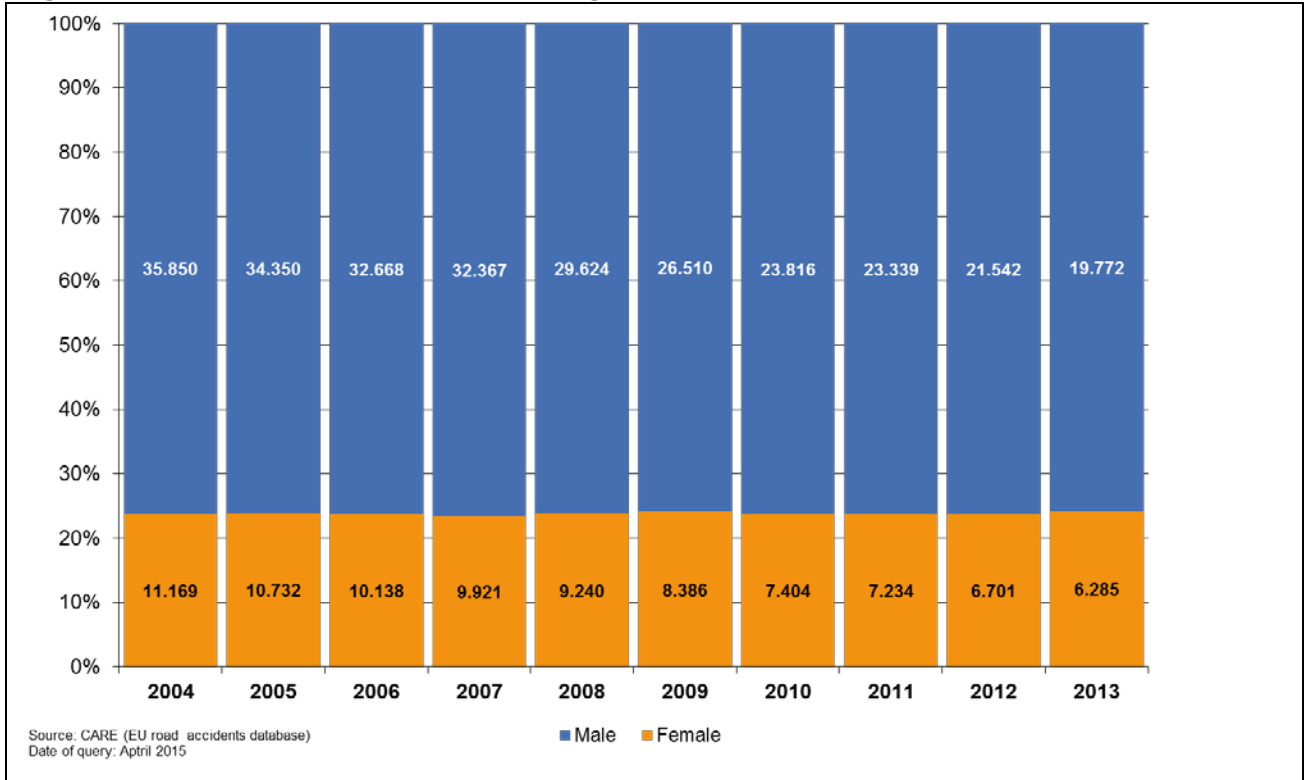


Table 19: Annual number of female fatalities by country, drivers, 2004-2013

	2004	2005	2006	2007	2008	2009	2010	2011	2012	2013
BE	138	136	136	120	105	113	111	88	95	74
BG	-	-	-	-	-	23	-	-	-	-
CZ	102	69	70	86	74	77	54	64	51	41
DK	55	38	38	56	58	45	43	32	23	27
DE	727	736	664	669	591	530	499	482	489	403
EE	-	8	13	11	11	5	-	-	-	-
IE	42	45	41	29	36	31	21	24	34	-
EL	65	65	53	64	64	44	60	52	33	44
ES	295	242	253	238	176	190	150	118	107	109
FR	655	586	527	507	451	473	435	423	433	337
HR	-	-	-	-	37	34	24	24	14	18
IT	415	400	403	353	337	313	306	317	273	255
CY	5	-	-	3	6	0	0	5	6	3
LV	18	16	11	14	15	14	7	-	13	8
LT	-	-	-	-	-	-	-	-	-	-
LU	6	10	3	4	6	3	4	4	1	7
HU	70	88	94	86	62	59	45	47	48	57
MT	-	0	0	0	2	0	1	-	-	-
NL	138	132	141	112	113	101	92	108	90	93
AT	94	96	96	69	81	63	58	60	76	49
PL	263	250	262	295	299	267	207	250	239	192
PT	56	67	44	46	63	46	46	52	34	35
RO	43	61	60	62	77	81	55	45	58	48
SI	21	26	15	24	13	10	16	11	16	16
SK	-	28	30	32	24	16	20	-	-	-
FI	44	43	42	46	46	30	31	32	29	31
SE	41	51	52	55	55	41	36	33	31	33
UK	317	288	288	269	260	220	204	204	153	182
EU*	3.707	3.546	3.399	3.310	3.085	2.829	2.553	2.524	2.395	2.145
Yearly Change		-4,3%	-4,2%	-2,6%	-6,8%	-8,3%	-9,7%	-1,1%	-5,1%	-10,4%
IS	1	3	5	1	2	0	1	2	1	4
NO	24	22	33	34	26	14	21	25	25	26
CH	41	35	37	34	32	42	30	33	27	27

Source: CARE database, data available in May 2015

* Totals for EU include latest available data (Lithuania data not included in the totals)

Table 20: Annual number of male fatalities by country, drivers, 2004-2013

	2004	2005	2006	2007	2008	2009	2010	2011	2012	2013
BE	765	671	668	711	586	588	484	533	466	442
BG	-	-	-	-	-	413	-	-	-	-
CZ	675	642	569	666	555	466	440	388	402	345
DK	214	195	162	224	230	153	116	119	91	94
DE	3.271	3.115	2.924	2.848	2.527	2.408	2.085	2.344	2.108	1.906
EE	-	73	87	93	48	44	-	-	-	-
IE	167	184	160	155	134	125	91	81	67	-
EL	951	986	1.021	945	956	919	778	661	618	538
ES	2.552	2.486	2.308	2.180	1.750	1.500	1.360	1.170	1.056	906
FR	3.237	3.113	2.799	2.732	2.526	2.566	2.400	2.340	2.090	1.942
HR	-	-	-	-	335	270	209	245	237	197
IT	3.652	3.495	3.345	3.292	2.962	2.621	2.546	2.373	2.349	2.042
CY	73	-	-	56	49	44	38	45	31	26
LV	169	147	161	162	115	92	64	58	72	73
LT	-	-	-	-	-	-	-	-	-	-
LU	26	24	24	24	21	24	21	18	20	28
HU	630	607	628	601	480	430	341	321	280	266
MT	-	5	6	8	6	8	6	-	-	-
NL	458	433	417	406	417	387	317	315	341	289
AT	512	448	405	405	399	357	316	297	298	275
PL	2.282	2.216	2.030	2.144	2.070	1.898	1.648	1.692	1.517	1.373
PT	715	693	578	555	496	466	506	479	406	351
RO	764	879	848	937	1.152	974	872	764	763	672
SI	156	139	156	172	133	100	73	87	76	72
SK	-	259	236	289	258	162	150	-	-	-
FI	181	217	191	217	182	153	159	166	160	150
SE	271	248	253	266	231	207	154	170	145	138
UK	1.684	1.714	1.665	1.550	1.333	1.163	974	981	917	896
EU*	24.489	23.810	22.445	22.386	20.364	18.538	16.605	16.260	15.123	13.701
Yearly Change		-2,8%	-5,7%	-0,3%	-9,0%	-9,0%	-10,4%	-2,1%	-7,0%	-9,4%
IS	12	11	14	12	8	9	3	5	5	6
NO	147	118	133	123	147	122	123	93	77	110
CH	302	240	206	227	218	204	181	183	183	144

Source: CARE database, data available in May 2015

* Totals for EU include latest available data (Lithuanian data not included in the totals)

Table 21: Annual number of female fatalities by country, passengers, 2004-2013

	2004	2005	2006	2007	2008	2009	2010	2011	2012	2013
BE	73	81	60	49	74	66	46	53	40	50
BG	-	-	-	-	-	100	-	-	-	-
CZ	140	132	94	103	97	74	58	56	56	47
DK	29	28	20	23	24	22	24	12	7	23
DE	485	415	407	350	348	327	308	279	233	242
EE	-	18	12	18	8	11	-	-	-	-
IE	32	36	34	28	22	11	13	18	11	-
EL	172	197	142	171	141	135	119	100	81	78
ES	589	473	436	364	324	260	225	204	207	162
FR	466	462	403	374	322	356	306	314	280	245
HR	-	-	-	-	66	66	38	32	30	38
IT	573	532	562	396	370	322	315	282	253	239
CY	14	-	-	8	5	6	4	1	3	2
LV	60	47	32	34	24	13	9	2	15	11
LT	-	-	-	-	-	-	-	-	-	-
LU	4	5	2	1	0	4	4	4	5	1
HU	125	127	108	126	85	70	76	71	64	51
MT	-	0	0	0	0	3	3	-	-	-
NL	65	47	47	46	38	42	22	27	32	17
AT	65	57	49	56	45	53	33	39	44	28
PL	494	486	469	488	469	384	339	302	265	265
PT	120	103	76	92	95	79	80	85	52	53
RO	243	319	271	278	311	283	227	177	200	167
SI	21	25	17	19	12	19	8	12	9	7
SK	-	64	44	54	41	40	29	-	-	-
FI	49	37	29	41	17	30	21	29	22	18
SE	49	41	38	46	31	30	20	20	11	17
UK	284	270	286	254	203	191	161	143	144	144
EU*	4.400	4.182	3.812	3.585	3.271	2.997	2.599	2.405	2.207	2.059
Yearly Change		-5,0%	-8,8%	-6,0%	-8,8%	-8,4%	-13,3%	-7,5%	-8,2%	-6,7%
IS	4	2	3	1	0	2	2	0	0	3
NO	35	30	23	24	21	20	18	17	7	18
CH	32	22	20	12	27	13	18	13	26	13

Source: CARE database, data available in May 2015

* Totals for EU include latest available data (Lithuanian data not included in the totals)

Table 22: Annual number of male fatalities by country, passengers, 2004-2013

	2004	2005	2006	2007	2008	2009	2010	2011	2012	2013
BE	81	88	79	81	72	69	85	64	63	57
BG	-	-	-	-	-	167	-	-	-	-
CZ	184	145	128	134	112	97	70	81	62	52
DK	28	25	26	34	36	31	28	24	15	14
DE	518	406	383	385	357	296	280	290	243	227
EE	-	18	24	29	22	15	-	-	-	-
IE	54	51	54	43	34	31	38	16	21	-
EL	187	174	170	172	144	153	122	105	86	68
ES	583	534	484	441	343	289	269	184	158	128
FR	591	522	445	446	428	382	366	367	361	279
HR	-	-	-	-	87	74	50	46	40	46
IT	672	605	601	463	410	314	326	299	302	300
CY	7	-	-	5	6	12	5	7	1	5
LV	72	58	50	50	57	29	16	12	13	15
LT	-	-	-	-	-	-	-	-	-	-
LU	2	6	4	9	2	5	2	1	2	4
HU	144	165	176	131	118	76	85	73	57	67
MT	-	6	1	1	0	0	1	-	-	-
NL	67	55	59	59	53	50	44	29	33	26
AT	75	70	70	53	52	59	47	40	32	21
PL	676	722	673	704	711	555	473	533	393	386
PT	170	161	107	117	74	100	110	76	65	53
RO	331	390	374	409	458	443	353	285	293	248
SI	41	30	38	44	16	17	14	10	10	10
SK	-	81	90	69	79	53	46	-	-	-
FI	52	37	25	28	46	36	26	24	15	25
SE	52	45	43	43	31	28	20	30	21	25
UK	389	365	362	323	257	239	151	166	159	143
EU*	5.335	5.020	4.725	4.528	4.172	3.621	3.209	2.991	2.674	2.449
Yearly Change		-5,9%	-5,9%	-4,2%	-7,9%	-13,2%	-11,4%	-6,8%	-10,6%	-8,4%
IS	3	2	5	0	2	4	0	1	1	1
NO	29	22	17	29	30	30	22	17	14	15
CH	40	43	31	32	21	30	23	22	28	16

Source: CARE database, data available in May 2015

* Totals for EU include latest available data (Lithuanian data not included in the totals)

Table 23: Annual number of female fatalities by country, pedestrians, 2004-2013

	2004	2005	2006	2007	2008	2009	2010	2011	2012	2013
BE	39	43	52	46	41	53	46	50	44	49
BG	-	-	-	-	-	78	-	-	-	-
CZ	84	97	61	86	88	74	65	67	60	62
DK	14	14	29	26	25	24	18	15	15	16
DE	359	294	300	290	290	245	190	277	228	260
EE	-	16	25	16	15	10	-	-	-	-
IE	28	21	22	28	17	14	12	14	9	-
EL	127	93	95	103	99	71	66	69	68	65
ES	239	243	211	221	176	171	181	144	135	122
FR	227	266	225	237	240	212	212	202	210	181
HR	-	-	-	-	53	41	40	28	25	28
IT	257	311	312	256	253	291	225	256	212	200
CY	2	-	-	3	6	6	6	7	5	4
LV	63	55	54	52	38	15	10	6	19	20
LT	-	-	-	-	-	-	-	-	-	-
LU	6	2	5	2	2	6	0	3	2	3
HU	107	93	91	102	90	78	60	51	51	51
MT	-	4	0	1	1	-	-	-	-	-
NL	21	31	24	34	28	32	31	26	24	21
AT	56	42	45	36	44	39	52	39	33	36
PL	534	507	501	550	553	458	367	386	341	335
PT	89	63	62	50	51	49	77	79	66	47
RO	314	308	330	400	377	330	293	251	242	272
SI	12	20	10	16	11	10	9	5	8	8
SK	-	52	60	70	46	32	43	-	-	-
FI	25	16	24	14	16	11	16	20	13	17
SE	26	19	21	25	24	19	11	25	17	15
UK	228	258	232	229	219	186	132	152	132	130
EU*	3.060	3.001	2.924	3.024	2.881	2.555	2.250	2.303	2.090	2.082
Yearly Change		-2,0%	-2,6%	3,4%	-4,7%	-11,3%	-11,9%	2,4%	-9,2%	-0,4%
IS	2	1	3	0	0	1	1	2	1	1
NO	10	16	17	12	13	11	11	8	6	8
CH	42	31	33	36	31	25	35	34	37	38

Source: CARE database, data available in May 2015

* Totals for EU include latest available data (Lithuanian data not included in the totals)

Table 24: Annual number of male fatalities by country, pedestrians, 2004-2013

	2004	2005	2006	2007	2008	2009	2010	2011	2012	2013
BE	62	64	70	57	58	48	58	62	60	49
BG	-	-	-	-	-	120	-	-	-	-
CZ	197	201	141	146	150	95	97	105	96	95
DK	29	30	31	42	33	28	26	18	16	18
DE	475	392	410	405	363	346	286	337	299	300
EE	-	33	37	21	26	12	-	-	-	-
IE	38	51	48	52	31	26	32	33	20	-
EL	165	136	170	151	144	129	113	154	102	86
ES	416	426	400	363	319	298	288	234	233	246
FR	354	369	310	324	308	284	273	317	279	284
HR	-	-	-	-	83	62	65	43	47	41
IT	553	475	446	371	393	376	396	333	364	349
CY	16	-	-	14	10	3	7	6	5	4
LV	134	119	98	105	67	45	41	39	43	49
LT	-	-	-	-	-	-	-	-	-	-
LU	6	0	5	5	4	6	1	3	4	2
HU	219	191	204	184	159	106	129	73	101	96
MT	-	2	4	2	0	-	-	-	-	-
NL	43	52	42	52	28	31	31	39	40	30
AT	76	55	65	72	58	62	46	48	48	46
PL	1.437	1.237	1.290	1.393	1.318	1.003	856	1.018	815	804
PT	144	152	93	106	104	99	118	120	93	97
RO	745	670	704	713	690	685	575	496	486	454
SI	23	17	26	15	28	14	17	16	11	12
SK	-	122	154	147	158	81	83	-	-	-
FI	24	29	25	34	37	19	19	21	16	17
SE	41	31	34	33	21	25	20	28	33	27
UK	466	441	465	434	372	338	283	314	297	275
EU*	6.023	5.513	5.490	5.444	5.081	4.341	3.992	4.072	3.723	3.616
Yearly Change		-8,5%	-0,4%	-0,8%	-6,7%	-14,6%	-8,0%	2,0%	-8,6%	-2,9%
IS	1	0	1	1	0	1	1	2	1	0
NO	12	16	19	11	18	15	13	8	16	10
CH	53	38	43	43	28	35	40	35	38	31

Source: CARE database, data available in May 2015

* Totals for EU include latest available data (Lithuanian data not included in the totals)

4 Fatalities 2013

4.1 People involved

4.1.1 Age and gender of persons

Table 25: Number of total fatalities by age group by country, 2013

	-	0-14	15-17	18-24	25-49	50-64	65+	Total
BE	1	18	8	119	318	108	151	723
BG	-	-	-	-	-	-	-	-
CZ	4	11	10	96	242	136	155	654
DK	0	13	6	25	56	38	53	191
DE	2	58	89	493	1.065	633	999	3.339
EE	-	-	-	-	-	-	-	-
IE	-	-	-	-	-	-	-	-
EL	21	17	27	112	319	149	234	879
ES	18	46	20	145	643	329	479	1.680
FR	0	97	102	636	1.213	532	688	3.268
HR	0	10	10	58	132	83	75	368
IT	77	55	68	400	1.167	609	1.009	3.385
CY	0	1	0	18	12	5	8	44
LV	10	7	1	14	75	32	40	179
LT	-	-	-	-	-	-	-	-
LU	0	2	0	5	19	10	9	45
HU	2	7	14	50	227	156	135	591
MT	-	-	-	-	-	-	-	-
NL	3	8	14	81	126	80	164	476
AT	0	10	14	56	148	85	142	455
PL	5	91	83	551	1.194	786	647	3.357
PT	3	11	8	65	215	142	193	637
RO	2	76	40	220	704	397	422	1.861
SI	0	3	2	22	43	28	27	125
SK	-	-	-	-	-	-	-	-
FI	0	6	12	36	79	52	73	258
SE	0	4	7	40	77	56	76	260
UK	0	41	48	348	642	282	409	1.770
EU*	203	640	632	3.866	9.317	4.984	6.448	24.545
%	0,8%	2,5%	2,4%	14,8%	35,7%	19,1%	24,7%	100,0%
IS	0	2	3	2	4	2	2	15
NO	0	4	6	29	60	44	44	187
CH	0	12	2	30	68	57	100	269

Source: CARE database, data available in May 2015

* Totals for EU include latest available data (Lithuanian data not included in the totals)

Table 26: Number of female fatalities by age group by country, 2013

	-	0-14	15-17	18-24	25-49	50-64	65+	Total
BE	0	8	1	27	60	22	55	173
BG	-	-	-	-	-	-	-	-
CZ	0	0	3	14	40	33	60	150
DK	0	6	3	8	12	10	26	65
DE	1	30	27	106	209	146	386	905
EE	-	-	-	-	-	-	-	-
IE	-	-	-	-	-	-	-	-
EL	4	6	10	24	44	31	68	187
ES	3	20	6	39	98	72	154	392
FR	0	35	22	92	200	142	272	763
HR	0	4	3	11	23	17	26	84
IT	27	18	13	79	167	126	264	694
CY	0	0	0	1	2	1	5	9
LV	0	2	0	2	11	9	15	39
LT	-	-	-	-	-	-	-	-
LU	0	0	0	1	6	1	3	11
HU	0	4	5	11	40	44	55	159
MT	-	-	-	-	-	-	-	-
NL	1	3	5	8	22	26	66	131
AT	0	3	4	8	24	16	58	113
PL	2	33	35	83	188	167	284	792
PT	0	4	2	10	34	27	58	135
RO	1	31	18	54	125	79	179	487
SI	0	1	0	8	7	7	8	31
SK	-	-	-	-	-	-	-	-
FI	0	2	1	10	10	12	31	66
SE	0	1	3	7	15	15	24	65
UK	0	14	22	70	130	52	168	456
EU*	53	239	193	725	1.584	1.113	2.378	6.285
%	0,8%	3,8%	3,1%	11,5%	25,2%	17,7%	37,8%	100,0%
IS	0	1	3	1	1	0	2	8
NO	0	1	2	6	14	9	20	52
CH	0	4	2	5	14	9	44	78

Source: CARE database, data available in May 2015

* Totals for EU include latest available data (Lithuanian data not included in the totals)

Table 27: Number of male fatalities by age group by country, 2013

	-	0-14	15-17	18-24	25-49	50-64	65+	Total
BE	1	10	7	92	258	86	96	550
BG	-	-	-	-	-	-	-	-
CZ	4	11	7	82	202	103	95	504
DK	0	7	3	17	44	28	27	126
DE	1	28	62	387	856	487	613	2.434
EE	-	-	-	-	-	-	-	-
IE	-	-	-	-	-	-	-	-
EL	17	11	17	88	275	118	166	692
ES	15	26	14	105	545	256	326	1.287
FR	0	62	80	544	1.013	390	416	2.505
HR	0	6	7	47	109	66	49	284
IT	50	37	55	321	1.000	483	745	2.691
CY	0	1	0	17	10	4	3	35
LV	10	5	1	12	64	23	25	140
LT								
LU	0	2	0	4	13	9	6	34
HU	2	3	9	39	187	112	80	432
MT	-	-	-	-	-	-	-	-
NL	2	5	9	73	104	54	98	345
AT	0	7	10	48	124	69	84	342
PL	3	58	48	468	1.006	619	363	2.565
PT	3	7	6	55	181	115	135	502
RO	1	45	22	166	579	318	243	1.374
SI	0	2	2	14	36	21	19	94
SK	-	-	-	-	-	-	-	-
FI	0	4	11	26	69	40	42	192
SE	0	3	4	33	62	41	52	195
UK	0	27	26	278	512	230	241	1.314
EU*	150	401	439	3.140	7.733	3.870	4.071	19.804
%	0,8%	2,0%	2,2%	15,9%	39,0%	19,5%	20,6%	100,0%
IS	0	1	0	1	3	2	0	7
NO	0	3	4	23	46	35	24	135
CH	0	8	0	25	54	48	56	191

Source: CARE database, data available in May 2015

* Totals for EU include latest available data (Lithuanian data not included in the totals)

4.2 Modes of transport

4.2.1 Mode of transport by age of persons

Table 28: Number of pedestrian fatalities by age group by country, 2013

	-	0-14	15-17	18-24	25-49	50-64	65+	Total
BE	1	6	1	8	27	14	42	99
BG	-	-	-	-	-	-	-	-
CZ	2	5	1	10	42	37	65	162
DK	0	2	4	0	8	7	13	34
DE	1	23	17	25	104	88	303	561
EE	-	-	-	-	-	-	-	-
IE	-	-	-	-	-	-	-	-
EL	11	7	2	4	23	28	76	151
ES	8	15	2	14	63	52	217	371
FR	0	24	5	31	91	70	244	465
HR	0	5	1	3	15	18	27	69
IT	3	16	5	31	88	78	328	549
CY	0	0	0	0	2	1	5	8
LV	6	3	0	0	23	12	26	70
LT	-	-	-	-	-	-	-	-
LU	0	1	0	0	2	1	1	5
HU	0	1	0	7	35	46	58	147
MT	-	-	-	-	-	-	-	-
NL	2	3	1	2	7	11	25	51
AT	0	3	1	6	13	11	48	82
PL	4	30	16	67	313	369	341	1.140
PT	2	7	2	6	23	28	76	144
RO	2	49	15	30	188	174	268	726
SI	0	2	0	3	5	2	8	20
SK	-	-	-	-	-	-	-	-
FI	0	1	0	0	7	6	20	34
SE	0	1	2	4	7	9	19	42
UK	0	23	13	47	122	60	140	405
EU*	64	242	94	316	1.284	1.204	2.507	5.711
%	1,1%	4,2%	1,7%	5,5%	22,5%	21,1%	43,9%	100,0%
IS	0	0	0	0	1	0	0	1
NO	0	2	0	0	4	4	8	18
CH	0	4	0	2	7	8	48	69

Source: CARE database, data available in May 2015

* Totals for EU include latest available data (Lithuanian data not included in the totals)

Table 29: Number of pedal cyclist fatalities by age group by country, 2013

	-	0-14	15-17	18-24	25-49	50-64	65+	Total
BE	0	6	2	3	9	18	35	73
BG	-	-	-	-	-	-	-	-
CZ	0	3	1	8	14	21	27	74
DK	0	3	0	3	5	7	15	33
DE	0	8	7	9	60	73	197	354
EE	-	-	-	-	-	-	-	-
IE	-	-	-	-	-	-	-	-
EL	1	1	0	0	5	3	5	15
ES	0	5	2	4	20	19	20	70
FR	0	10	3	4	34	46	50	147
HR	0	0	0	1	3	8	11	23
IT	2	4	3	11	56	54	121	251
CY	0	1	0	0	0	0	1	2
LV	1	0	1	1	4	2	4	13
LT	-	-	-	-	-	-	-	-
LU	0	0	0	0	0	0	0	0
HU	0	1	0	4	13	21	29	68
MT	-	-	-	-	-	-	-	-
NL	0	4	5	7	16	18	62	112
AT	0	1	0	1	9	9	32	52
PL	0	15	9	21	56	93	112	306
PT	1	0	0	3	9	8	8	29
RO	0	7	4	8	46	44	52	161
SI	0	1	1	0	6	2	6	16
SK	-	-	-	-	-	-	-	-
FI	0	3	1	1	3	4	8	20
SE	0	0	0	0	3	5	6	14
UK	0	4	5	13	41	32	18	113
EU*	6	79	45	105	432	508	842	2.017
%	0,3%	3,9%	2,2%	5,2%	21,4%	25,2%	41,8%	100,0%
IS	0	0	0	0	0	0	0	0
NO	0	1	0	1	4	3	1	10
CH	0	1	0	2	3	6	9	21

Source: CARE database, data available in May 2015

* Totals for EU include latest available data (Lithuanian data not included in the totals)

Table 30: Number of moped rider and passenger fatalities by age group by country, 2013

	-	0-14	15-17	18-24	25-49	50-64	65+	Total
BE	0	0	0	5	4	3	1	13
BG	-	-	-	-	-	-	-	-
CZ	0	0	0	1	2	0	3	6
DK	0	0	0	4	3	2	2	11
DE	0	0	9	8	17	16	23	73
EE	-	-	-	-	-	-	-	-
IE	-	-	-	-	-	-	-	-
EL	1	0	3	1	8	3	9	25
ES	0	0	5	9	15	11	15	56
FR	0	3	45	39	49	18	5	159
HR	0	0	1	5	1	6	1	14
IT	0	6	29	12	26	14	38	125
CY	0	0	0	0	0	0	0	0
LV	0	1	0	0	1	1	0	3
LT	-	-	-	-	-	-	-	-
LU	0	0	0	0	0	0	0	0
HU	0	0	0	5	8	9	2	24
MT	-	-	-	-	-	-	-	-
NL	0	0	5	6	12	8	10	41
AT	0	1	6	0	2	2	4	15
PL	0	3	11	10	22	10	6	62
PT	0	0	0	8	10	16	17	51
RO	0	0	0	10	16	7	6	39
SI	0	0	0	2	1	1	0	4
SK	-	-	-	-	-	-	-	-
FI	0	0	2	0	1	1	1	5
SE	0	0	0	2	0	0	1	3
UK	0	0	2	0	2	0	0	4
EU*	1	14	119	129	201	130	146	741
%	0,2%	1,9%	16,1%	17,4%	27,1%	17,6%	19,7%	100,0%
IS	0	0	0	0	0	0	0	0
NO	0	0	1	1	1	0	0	3
CH	0	0	1	0	0	4	3	8

Source: CARE database, data available in May 2015

* Totals for EU include latest available data (Lithuanian data not included in the totals)

Table 31: Number of motorcycle rider and passenger fatalities by age group by country, 2013

	-	0-14	15-17	18-24	25-49	50-64	65+	Total
BE	0	0	0	13	75	11	3	102
BG	-	-	-	-	-	-	-	-
CZ	1	0	4	14	34	7	6	66
DK	0	0	0	0	9	5	1	15
DE	0	0	24	103	269	136	36	568
EE	-	-	-	-	-	-	-	-
IE	-	-	-	-	-	-	-	-
EL	7	4	11	50	134	44	21	271
ES	1	0	3	21	209	59	8	302
FR	0	2	11	148	359	113	25	658
HR	0	0	3	8	28	9	1	49
IT	2	0	17	110	412	143	40	724
CY	0	0	0	9	5	1	0	15
LV	2	1	0	1	6	0	0	10
LT	-	-	-	-	-	-	-	-
LU	0	0	0	1	5	2	0	8
HU	0	0	0	5	45	7	1	58
MT	-	-	-	-	-	-	-	-
NL	0	0	0	7	14	7	1	29
AT	0	1	1	14	43	21	7	87
PL	0	1	7	78	153	11	3	253
PT	0	1	3	10	50	9	5	78
RO	0	0	1	12	37	1	1	52
SI	0	0	1	3	7	3	3	17
SK	-	-	-	-	-	-	-	-
FI	0	0	5	4	11	4	0	24
SE	0	0	0	5	23	8	4	40
UK	0	1	4	72	185	65	10	337
EU*	16	12	97	712	2.173	671	180	3.862
%	0,4%	0,3%	2,5%	18,4%	56,3%	17,4%	4,7%	100,0%
IS	0	0	0	0	0	1	0	1
NO	0	2	4	5	8	2	0	21
CH	0	0	1	7	19	21	7	55

Source: CARE database, data available in May 2015

* Totals for EU include latest available data (Lithuanian data not included in the totals)

Table 32: Number of car driver and passenger fatalities by age group by country, 2013

	-	0-14	15-17	18-24	25-49	50-64	65+	Total
BE	0	5	5	80	156	42	52	340
BG	-	-	-	-	-	-	-	-
CZ	1	3	3	59	131	59	52	308
DK	0	7	2	18	23	10	19	79
DE	1	25	32	342	528	262	398	1.588
EE	-	-	-	-	-	-	-	-
IE	-	-	-	-	-	-	-	-
EL	1	3	11	49	128	54	101	347
ES	8	23	6	93	277	132	177	716
FR	0	54	35	379	576	230	341	1.615
HR	0	5	5	41	79	33	32	195
IT	14	29	13	226	507	264	430	1.483
CY	0	0	0	9	4	2	1	16
LV	0	2	0	11	36	14	8	71
LT	-	-	-	-	-	-	-	-
LU	0	1	0	4	12	5	8	30
HU	1	5	14	25	107	62	40	254
MT	-	-	-	-	-	-	-	-
NL	1	0	3	49	69	24	34	180
AT	0	4	5	34	69	33	49	194
PL	1	34	38	352	579	270	174	1.448
PT	0	2	3	27	81	45	56	214
RO	0	16	17	149	347	129	63	721
SI	0	0	0	7	13	12	8	40
SK	-	-	-	-	-	-	-	-
FI	0	1	3	31	47	32	38	152
SE	0	2	4	26	39	30	43	144
UK	0	12	23	198	266	98	218	815
EU*	57	261	261	2.420	4.475	1.960	2.409	11.843
%	0,5%	2,2%	2,2%	20,4%	37,8%	16,6%	20,3%	100,0%
IS	0	1	3	2	3	0	2	11
NO	0	0	3	18	34	21	29	105
CH	0	6	0	17	38	10	32	103

Source: CARE database, data available in May 2015

* Totals for EU include latest available data (Lithuanian data not included in the totals)

4.2.2 Mode of transport by type of area

Figure 20: Fatalities by type of area and mode of transport in the EU, 2013

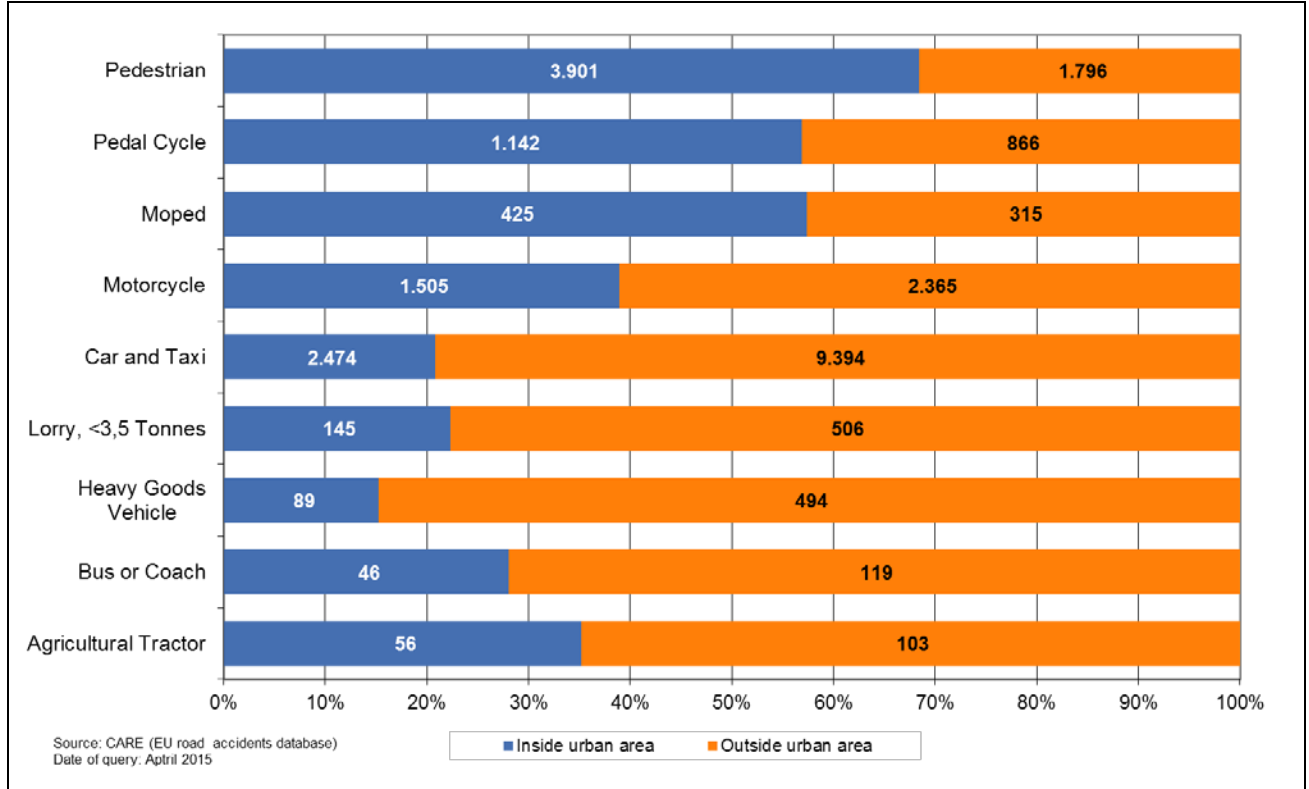


Table 33: Number of fatalities by mode of transport and type of area by country (part 1), 2013

	agricultural tractor		bus or coach		car + taxi		heavy goods vehicle		lorry, under 3.5 tonnes	
	inside urban area	outside urban area	inside urban area	outside urban area	inside urban area	outside urban area	inside urban area	outside urban area	inside urban area	outside urban area
BE	1	1	0	5	68	272	2	11	6	28
BG	-	-	-	-	-	-	-	-	-	-
CZ	0	1	0	2	61	247	4	15	2	13
DK	0	0	0	0	11	68	0	1	1	16
DE	5	7	7	4	174	1,414	15	133	0	0
EE	-	-	-	-	-	-	-	-	-	-
IE	-	-	-	-	-	-	-	-	-	-
EL	3	14	0	2	109	238	3	4	13	25
ES	1	16	1	10	75	642	1	42	3	65
FR	1	6	0	7	224	1,391	6	51	21	111
HR	9	3	0	1	93	102	0	2	2	0
IT	7	17	2	46	381	1,102	4	39	28	73
CY	0	0	0	0	7	9	1	1	0	1
LV	0	2	0	1	10	61	1	2	0	5
LT	-	-	-	-	-	-	-	-	-	-
LU	0	0	0	0	9	21	0	2	0	0
HU	0	0	0	6	47	207	3	10	2	15
MT	-	-	-	-	-	-	-	-	-	-
NL	0	0	0	0	30	150	1	6	2	13
AT	1	3	0	0	22	172	0	6	0	15
PL	10	13	6	12	430	1,018	26	64	0	0
PT	12	9	0	11	77	137	5	13	28	33
RO	4	2	7	1	283	438	8	10	28	33
SI	-	-	-	-	-	-	-	-	-	-
SK	-	-	-	-	-	-	-	-	-	-
FI	0	4	1	0	14	138	0	6	0	9
SE	1	0	0	1	13	131	0	5	1	4
UK	0	5	9	3	135	680	1	21	4	35
EU*	56	103	46	119	2,474	9,394	89	494	145	506
%	35,2%	64,8%	28,1%	71,9%	20,8%	79,2%	15,3%	84,7%	22,3%	77,7%
IS	0	0	0	0	2	9	0	0	0	1
NO	0	3	2	3	9	96	0	11	1	8
CH	4	1	0	0	17	86	1	2	0	3

Source: CARE database, data available in May 2015

* Totals for EU include latest available data (Lithuanian data not included in the totals)

Table 34: Number of fatalities by mode of transport and type of area by country (part 2), 2013

	Moped		motorcycle		Pedal cycle		pedestrian		Total		Total
	inside urban area	outside urban area	inside urban area	outside urban area	inside urban area	outside urban area	inside urban area	outside urban area	inside urban area	outside urban area	
BE	4	9	18	84	25	48	53	46	177	504	681
BG	-	-	-	-	-	-	-	-	310	579	-
CZ	5	1	27	39	34	40	107	55	240	413	653
DK	4	7	4	11	20	13	19	15	59	131	190
DE	25	48	126	442	216	138	396	165	964	2.351	3.315
EE	-	-	-	-	-	-	-	-	19	78	-
IE	-	-	-	-	-	-	-	-	35	123	-
EL	20	5	181	90	11	4	119	32	459	414	873
ES	22	34	99	203	25	45	217	154	444	1.212	1.656
FR	80	79	206	452	67	80	317	148	922	2.325	3.247
HR	12	2	25	24	17	6	54	15	212	155	367
IT	79	46	353	371	151	100	410	139	1.415	1.933	3.348
CY	0	0	13	2	1	1	8	0	30	14	44
LV	0	3	3	7	1	12	37	33	52	126	178
LT	-	-	-	-	-	-	-	-	-	-	-
LU	0	0	2	6	0	0	4	1	15	30	45
HU	14	10	17	41	46	22	101	46	230	357	587
MT	-	-	-	-	-	-	-	-	12	0	-
NL	28	13	10	19	69	43	35	16	175	260	435
AT	8	7	11	76	28	24	45	37	115	340	455
PL	42	20	148	105	181	125	730	410	1.573	1.767	3.340
PT	36	15	58	20	18	11	113	31	347	280	627
RO	32	7	40	12	125	36	590	136	1.117	675	1.792
SI	-	-	-	-	-	-	-	-	34	76	-
SK	-	-	-	-	-	-	-	-	174	207	-
FI	3	2	9	15	10	10	20	14	57	198	255
SE	1	2	11	29	8	6	18	24	53	202	255
UK	2	2	93	244	46	67	253	152	543	1.209	1.752
EU*	425	315	1.505	2.365	1.142	866	3.901	1.796	9.783	15.959	25.742
%	57,4%	42,6%	38,9%	61,1%	56,9%	43,1%	68,5%	31,5%	38,0%	62,0%	-
IS	0	0	1	0	0	0	1	0	4	10	14
NO	2	1	2	19	4	6	11	7	31	154	185
CH	3	5	18	37	13	8	57	12	113	154	267

Source: CARE database, data available in May 2015

* Totals for EU include latest available data (Lithuanian data not included in the totals)

4.3 Accident characteristics

4.3.1 Various periods of time (month, day of week, hour of day)

Figure 21: Number of fatalities by month in the EU, 2013

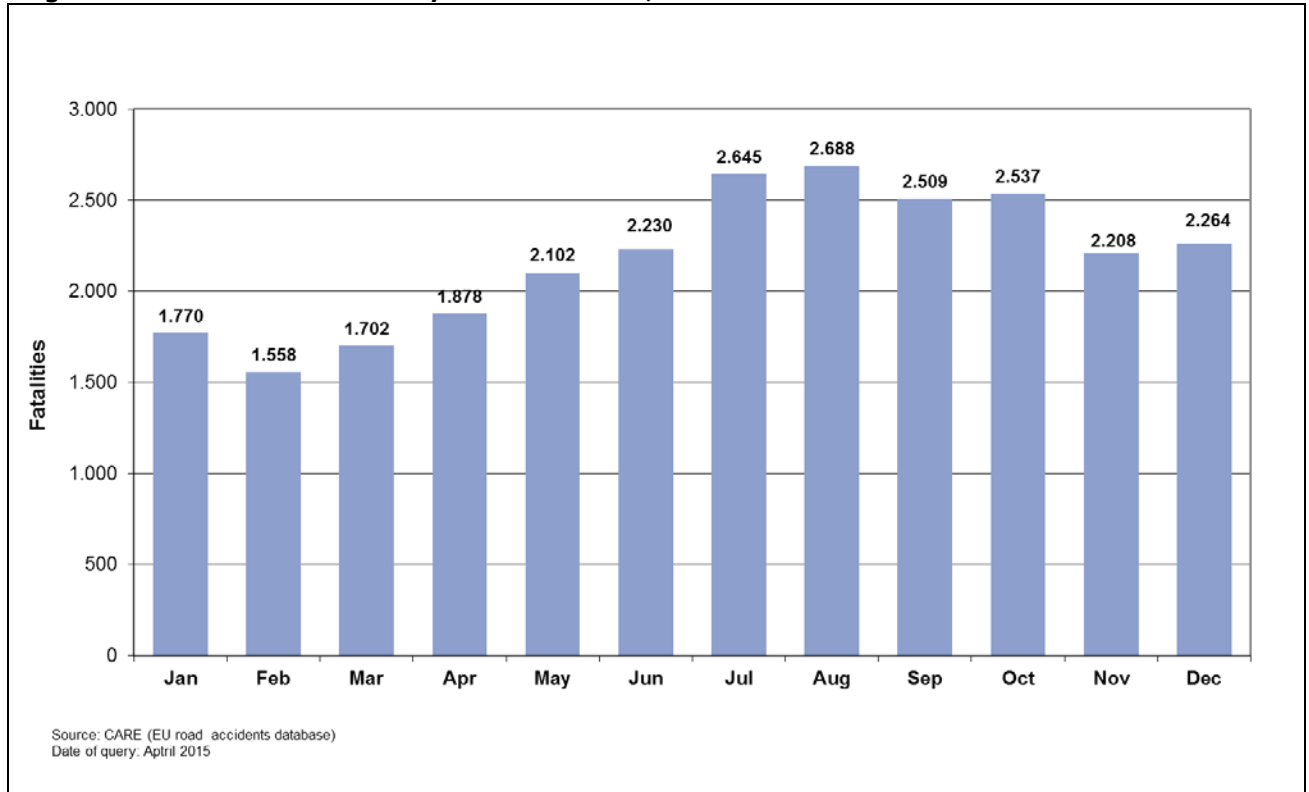


Figure 22: Number of fatalities by month and person class in the EU, 2013

Annual Accident Report 2015

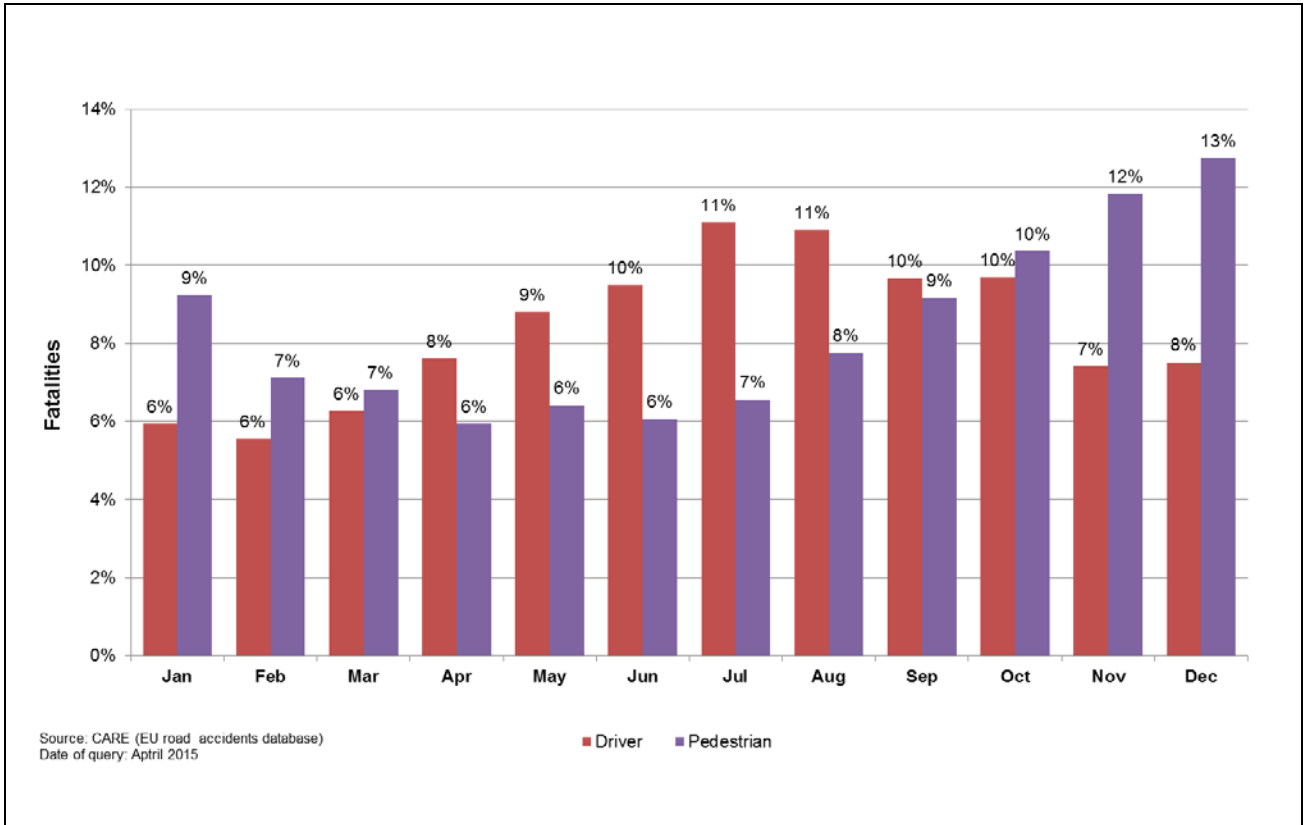


Table 35: Number of fatalities by month by country (January to June), 2013

	January	February	March	April	May	June
BE	53	47	58	88	45	57
BG	-	-	-	-	-	-
CZ	40	34	49	48	57	46
DK	11	14	10	12	16	11
DE	208	181	226	240	279	305
EE	-	-	-	-	-	-
IE	-	-	-	-	-	-
EL	69	55	55	70	55	79
ES	133	135	124	121	105	138
FR	243	221	200	236	224	293
HR	20	14	24	19	30	34
IT	240	220	239	240	288	327
CY	2	2	2	5	6	4
LV	9	10	6	7	17	20
LT	-	-	-	-	-	-
LU	2	0	3	2	2	6
HU	33	34	34	42	54	41
MT	-	-	-	-	-	-
NL	22	26	46	30	48	41
AT	29	22	28	34	39	39
PL	215	176	190	200	288	277
PT	71	35	47	31	47	53
RO	97	99	103	153	138	123
SI	7	6	11	7	12	13
SK	-	-	-	-	-	-
FI	20	6	17	17	28	30
SE	17	16	13	14	25	27
UK	129	98	122	144	166	143
EU*	1.770	1.558	1.702	1.878	2.102	2.230
%	6,8%	6,0%	6,5%	7,2%	8,1%	8,5%
IS	0	0	3	1	1	1
LI	-	-	-	-	-	-
NO	14	9	11	9	14	16
CH	18	12	16	19	26	33

Source: CARE database, data available in May 2015

* Totals for EU include latest available data (Lithuanian data not included in the totals)

Table 36: Number of fatalities by month by country (July to December), 2013

	July	August	September	October	November	December	Total
BE	73	48	60	70	64	60	723
BG	-	-	-	-	-	-	-
CZ	76	70	64	54	57	59	654
DK	26	19	17	20	15	20	191
DE	374	323	338	310	257	298	3.339
EE	-	-	-	-	-	-	-
IE	-	-	-	-	-	-	-
EL	85	119	93	69	67	63	879
ES	165	168	163	154	128	147	1.680
FR	344	322	312	308	252	313	3.268
HR	43	39	45	45	24	31	368
IT	334	347	313	292	286	259	3.385
CY	3	4	4	5	5	2	44
LV	21	15	15	19	27	13	179
LT	-	-	-	-	-	-	-
LU	8	5	3	3	6	5	45
HU	73	67	59	58	53	43	591
MT	-	-	-	-	-	-	-
NL	41	44	40	59	38	41	476
AT	61	63	45	33	27	35	455
PL	306	372	333	391	305	304	3.357
PT	48	73	52	69	49	62	637
RO	149	212	211	203	181	192	1.861
SI	10	8	16	10	11	14	125
SK	-	-	-	-	-	-	-
FI	38	22	17	13	32	18	258
SE	33	28	18	19	28	22	260
UK	170	157	155	164	162	160	1.770
EU*	2.645	2.688	2.509	2.537	2.208	2.264	26.090
%	10,1%	10,3%	9,6%	9,7%	8,5%	8,7%	100,0%
IS	0	5	1	0	1	2	15
LI	-	-	-	-	-	-	-
NO	17	25	19	22	10	21	187
CH	27	29	25	19	24	21	269

Source: CARE database, data available in May 2015

* Totals for EU include latest available data (Lithuanian data not included in the totals)

Table 37: Number of driver fatalities by month by country (January to June), 2013

	January	February	March	April	May	June
BE	41	31	41	56	38	46
BG	-	-	-	-	-	-
CZ	24	16	29	32	31	33
DK	8	10	5	6	11	7
DE	117	116	130	179	213	222
EE	-	-	-	-	-	-
IE	-	-	-	-	-	-
EL	40	35	37	45	42	51
ES	63	87	70	80	75	80
FR	154	152	136	165	155	232
HR	11	8	10	11	22	21
IT	159	129	170	180	218	239
CY	1	0	2	3	4	3
LV	4	5	1	4	9	14
LT	-	-	-	-	-	-
LU	1	0	3	1	1	6
HU	11	16	18	24	34	28
MT	-	-	-	-	-	-
NL	16	16	36	25	40	28
AT	13	11	20	27	31	32
PL	75	64	83	101	149	161
PT	31	18	31	22	30	35
RO	29	37	35	64	58	53
SI	3	3	5	7	7	12
SK	-	-	-	-	-	-
FI	16	5	12	13	21	22
SE	9	12	9	11	22	18
UK	75	58	65	93	121	97
EU*	943	881	995	1.208	1.396	1.507
%	5,9%	5,6%	6,3%	7,6%	8,8%	9,5%
IS	0	0	1	1	1	1
LI	-	-	-	-	-	-
NO	11	4	9	8	11	13
CH	13	6	8	16	19	22

Source: CARE database, data available in May 2015

* Totals for EU include latest available data (Lithuanian data not included in the totals)

Table 38: Number of driver fatalities by month by country (June to December), 2013

	July	August	September	October	November	December	Total
BE	56	37	43	46	43	38	516
BG	-	-	-	-	-	-	-
CZ	53	56	38	29	22	26	389
DK	14	13	11	14	10	12	121
DE	293	249	246	234	146	164	2.309
EE	-	-	-	-	-	-	-
IE	-	-	-	-	-	-	-
EL	61	70	56	52	45	48	582
ES	98	98	109	86	77	95	1.018
FR	254	234	208	211	179	199	2.279
HR	27	27	24	25	13	16	215
IT	219	242	221	194	167	159	2.297
CY	2	1	2	4	5	2	29
LV	13	11	3	7	8	4	83
LT	-	-	-	-	-	-	-
LU	6	5	3	2	4	3	35
HU	40	42	35	39	22	16	325
MT	-	-	-	-	-	-	-
NL	37	36	33	47	30	38	382
AT	52	48	33	21	20	16	324
PL	168	197	166	187	106	109	1.566
PT	39	42	33	45	28	33	387
RO	73	97	73	83	63	55	720
SI	9	7	12	8	8	7	88
SK	-	-	-	-	-	-	-
FI	28	16	12	7	17	12	181
SE	22	19	13	10	15	11	171
UK	110	97	93	104	81	84	1.078
EU*	1.759	1.730	1.534	1.536	1.177	1.192	15.858
%	11,1%	10,9%	9,7%	9,7%	7,4%	7,5%	100,0%
IS	0	3	1	0	0	2	10
NO	11	19	15	16	6	13	136
CH	16	20	14	14	12	11	171

Source: CARE database, data available in May 2015

* Totals for EU include latest available data (Lithuanian data not included in the totals)

Table 39: Number of passenger fatalities by month by country (January to June), 2013

	January	February	March	April	May	June
BE	4	4	11	18	3	7
BG	-	-	-	-	-	-
CZ	7	5	8	5	15	7
DK	0	4	2	4	3	1
DE	33	27	45	34	37	47
EE	-	-	-	-	-	-
IE	-	-	-	-	-	-
EL	10	8	7	13	2	15
ES	24	21	18	21	13	28
FR	44	32	37	36	39	37
HR	8	2	9	4	3	8
IT	36	40	33	31	36	47
CY	1	0	0	2	2	1
LV	0	3	3	0	2	2
LT	-	-	-	-	-	-
LU	0	0	0	0	1	0
HU	12	9	8	11	9	6
MT	-	-	-	-	-	-
NL	1	6	5	3	2	5
AT	2	4	3	2	1	3
PL	38	34	41	45	81	56
PT	16	4	5	3	4	10
RO	22	21	25	34	29	24
SI	0	1	3	0	0	1
SK	-	-	-	-	-	-
FI	1	0	4	2	5	8
SE	4	1	2	1	2	6
UK	14	19	28	24	19	24
EU*	300	271	318	330	339	376
%	6,7%	6,0%	7,1%	7,3%	7,5%	8,3%
IS	0	0	2	0	0	0
NO	1	2	2	1	1	3
CH	0	2	3	1	5	4

Source: CARE database, data available in May 2015

* Totals for EU include latest available data (Lithuanian data not included in the totals)

Table 40: Number of passenger fatalities by month by country (July to December), 2013

	July	August	September	October	November	December	Total
BE	8	3	12	14	13	10	107
BG	-	-	-	-	-	-	-
CZ	13	6	12	8	7	10	103
DK	9	4	2	2	2	4	37
DE	48	41	49	32	31	45	469
EE	-	-	-	-	-	-	-
IE	-	-	-	-	-	-	-
EL	15	30	21	10	12	3	146
ES	40	32	21	28	22	20	291
FR	47	60	56	55	40	41	524
HR	7	7	14	10	3	9	84
IT	85	54	47	43	53	34	539
CY	0	0	0	1	0	0	7
LV	4	2	4	1	4	1	26
LT	-	-	-	-	-	-	-
LU	1	0	0	0	1	2	5
HU	19	16	12	8	5	4	119
MT	-	-	-	-	-	-	-
NL	2	5	3	6	4	1	43
AT	5	9	6	6	3	5	49
PL	78	83	52	64	40	39	651
PT	5	18	7	10	8	16	106
RO	25	55	63	36	36	45	415
SI	0	1	3	1	3	4	17
SK	-	-	-	-	-	-	-
FI	6	4	3	1	7	2	43
SE	7	6	3	4	4	2	42
UK	29	32	24	21	28	25	287
EU*	507	515	451	408	354	342	4.514
%	11,2%	11,4%	10,0%	9,0%	7,9%	7,6%	100,0%
IS	0	2	0	0	0	0	4
NO	3	5	3	5	2	5	33
CH	3	5	3	0	1	2	29

Source: CARE database, data available in May 2015

* Totals for EU include latest available data (Lithuanian data not included in the totals)

Table 41: Number of pedestrian fatalities by month by country (January to June), 2013

	January	February	March	April	May	June
BE	8	12	6	14	4	4
BG	-	-	-	-	-	-
CZ	9	13	12	11	11	6
DK	3	0	3	2	2	3
DE	58	38	51	27	29	36
EE	-	-	-	-	-	-
IE	-	-	-	-	-	-
EL	19	12	11	12	11	13
ES	46	27	36	20	16	30
FR	45	37	27	35	30	24
HR	1	4	5	4	5	5
IT	45	51	36	29	34	41
CY	0	2	0	0	0	0
LV	5	2	2	3	6	4
LT	-	-	-	-	-	-
LU	1	0	0	1	0	0
HU	10	9	8	7	11	7
MT	-	-	-	-	-	-
NL	5	4	5	2	6	8
AT	14	7	5	5	7	4
PL	102	78	66	54	58	60
PT	24	13	11	6	13	8
RO	46	41	43	55	51	46
SI	4	2	3	0	5	0
SK	-	-	-	-	-	-
FI	3	1	1	2	2	0
SE	4	3	2	2	1	2
UK	40	21	29	27	26	22
EU*	527	406	389	340	366	346
%	9,2%	7,1%	6,8%	6,0%	6,4%	6,1%
IS	0	0	0	0	0	0
NO	2	3	0	0	2	0
CH	5	4	5	2	2	7

Source: CARE database, data available in May 2015

* Totals for EU include latest available data (Lithuanian data not included in the totals)

Table 42: Number of pedestrian fatalities by month by country (July to December), 2013

	July	August	September	October	November	December	Total
BE	8	8	5	10	8	12	99
BG	-	-	-	-	-	-	-
CZ	10	8	14	17	28	23	162
DK	3	2	4	4	3	4	33
DE	33	33	43	44	80	89	561
EE	-	-	-	-	-	-	-
IE	-	-	-	-	-	-	-
EL	9	19	16	7	10	12	151
ES	26	38	32	40	28	31	371
FR	43	28	48	42	33	73	465
HR	9	5	7	10	8	6	69
IT	30	51	45	55	66	66	549
CY	1	3	2	0	0	0	8
LV	4	2	8	11	15	8	70
LT	-	-	-	-	-	-	-
LU	1	0	0	1	1	0	5
HU	14	9	12	11	26	23	147
MT	-	-	-	-	-	-	-
NL	2	3	4	6	4	2	51
AT	4	6	6	6	4	14	82
PL	60	92	115	140	159	156	1.140
PT	4	13	12	14	13	13	144
RO	51	60	75	84	82	92	726
SI	1	0	1	1	0	3	20
SK	-	-	-	-	-	-	-
FI	4	2	2	5	8	4	34
SE	2	3	2	4	9	8	42
UK	31	28	38	39	53	51	405
EU*	375	443	523	592	676	728	5.712
%	6,6%	7,8%	9,2%	10,4%	11,8%	12,8%	100,0%
IS	0	0	0	0	1	0	1
NO	3	1	1	1	2	3	18
CH	8	4	8	5	11	8	69

Source: CARE database, data available in May 2015

* Totals for EU include latest available data (Lithuanian data not included in the totals)

Figure 23: Total number of fatalities by day of week and person class in the EU, 2013

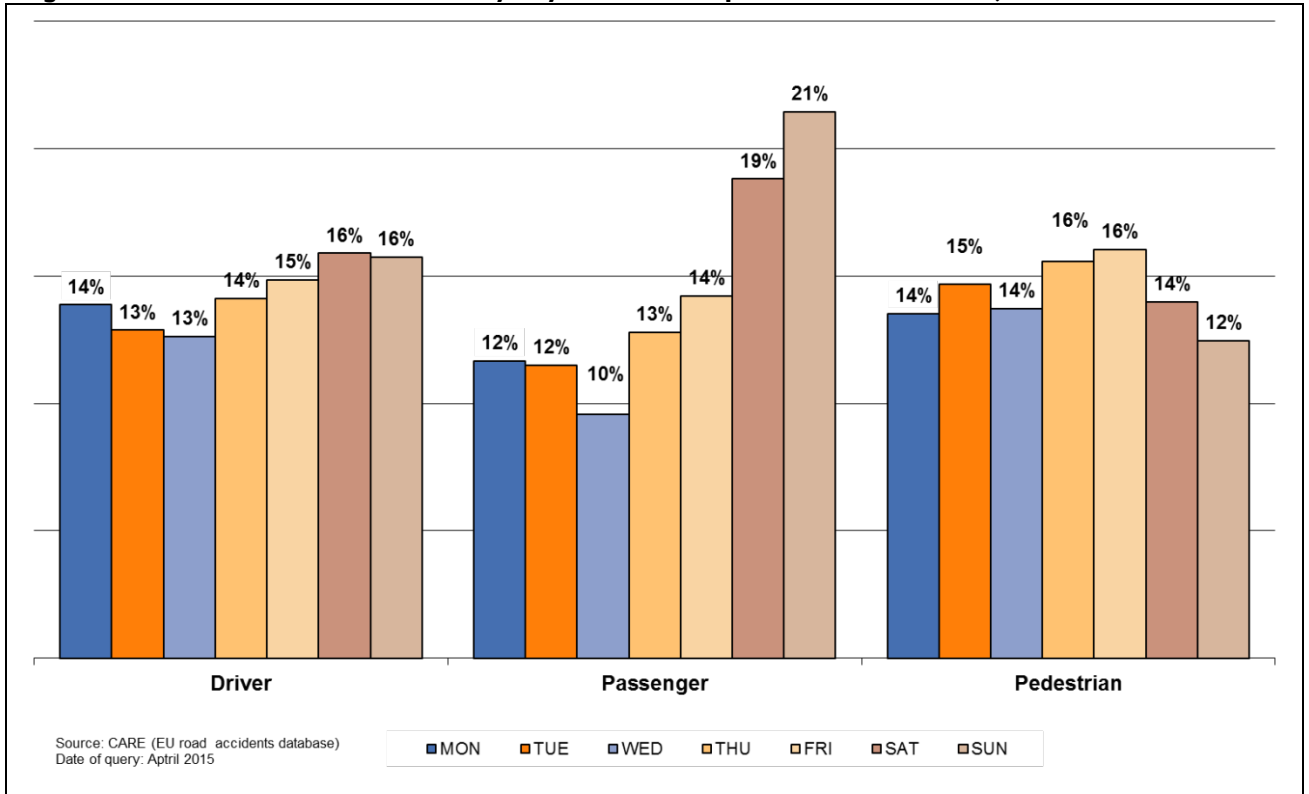


Table 43: Total number of fatalities by day of week by country, 2013

	Monday	Tuesday	Wednesday	Thursday	Friday	Saturday	Sunday	Total
BE	99	73	92	101	107	115	136	723
BG	-	-	-	-	-	-	-	-
CZ	89	86	80	98	114	95	92	654
DK	33	27	25	24	25	31	26	191
DE	483	495	397	514	457	486	507	3.339
EE	-	-	-	-	-	-	-	-
IE	-	-	-	-	-	-	-	-
EL	110	111	113	143	123	130	149	879
ES	230	220	188	265	252	266	259	1.680
FR	423	426	413	427	497	550	532	3.268
HR	45	51	40	54	54	62	62	368
IT	437	446	425	462	494	529	592	3.385
CY	2	6	4	9	9	7	7	44
LV	18	18	31	30	23	33	26	179
LT	-	-	-	-	-	-	-	-
LU	13	12	3	4	3	8	2	45
HU	70	84	84	82	102	99	70	591
MT	-	-	-	-	-	-	-	-
NL	68	81	64	60	69	67	67	476
AT	72	61	45	70	74	74	59	455
PL	439	429	441	479	508	552	509	3.357
PT	78	92	74	81	90	123	99	637
RO	263	243	208	270	288	265	324	1.861
SI	21	16	13	12	21	20	22	125
SK	-	-	-	-	-	-	-	-
FI	34	32	33	42	34	42	41	258
SE	39	14	40	41	31	47	48	260
UK	260	210	221	220	284	299	276	1.770
EU*	3.500	3.402	3.220	3.708	3.913	4.168	4.179	26.090
%	13,4%	13,0%	12,3%	14,2%	15,0%	16,0%	16,0%	100,0%
IS	1	0	1	4	2	3	4	15
NO	22	32	20	29	27	23	34	187
CH	32	33	38	41	46	42	37	269

Source: CARE database, data available in May 2015

* Totals for EU include latest available data (Lithuanian data not included in the totals)

Table 44: Number of fatalities by day of week by country, 2013 (drivers)

	Monday	Tuesday	Wednesday	Thursday	Friday	Saturday	Sunday	Total
BE	70	53	68	73	74	85	93	516
BG	-	-	-	-	-	-	-	-
CZ	52	46	43	60	74	60	54	389
DK	23	19	14	13	17	21	14	121
DE	344	351	288	363	294	336	333	2.309
EE	-	-	-	-	-	-	-	-
IE	-	-	-	-	-	-	-	-
EL	75	71	81	94	81	74	106	582
ES	145	129	109	159	156	160	160	1.018
FR	320	294	286	293	358	362	366	2.279
HR	26	27	24	30	28	37	43	215
IT	283	313	298	326	352	365	360	2.297
CY	2	2	3	5	6	6	5	29
LV	9	4	18	15	7	20	10	83
LT	-	-	-	-	-	-	-	-
LU	10	9	2	2	3	7	2	35
HU	42	45	43	44	54	54	43	325
MT	-	-	-	-	-	-	-	-
NL	60	64	48	53	54	52	51	382
AT	48	44	33	47	55	51	46	324
PL	207	193	217	213	235	266	235	1.566
PT	53	49	50	45	57	75	58	387
RO	110	82	86	97	112	121	112	720
SI	16	13	11	8	12	13	15	88
SK	-	-	-	-	-	-	-	-
FI	25	22	25	29	23	30	27	181
SE	30	6	28	26	22	28	31	171
UK	169	130	133	144	156	164	182	1.078
EU*	2.200	2.042	2.003	2.240	2.355	2.520	2.498	15.858
%	13,9%	12,9%	12,6%	14,1%	14,9%	15,9%	15,8%	100,0%
IS	1	0	1	3	1	3	1	10
NO	16	22	16	21	22	16	23	136
CH	20	22	27	26	34	19	23	171

Source: CARE database, data available in May 2015

* Totals for EU include latest available data (Lithuanian data not included in the totals)

Table 45: Number of fatalities by day of week by country, 2013 (passengers)

	Monday	Tuesday	Wednesday	Thursday	Friday	Saturday	Sunday	Total
BE	10	13	7	13	18	17	29	107
BG	-	-	-	-	-	-	-	-
CZ	13	14	11	17	14	14	20	103
DK	3	5	5	3	6	6	9	37
DE	56	58	44	62	65	85	99	469
EE	-	-	-	-	-	-	-	-
IE	-	-	-	-	-	-	-	-
EL	15	15	12	32	17	29	26	146
ES	45	39	27	37	32	54	57	291
FR	43	63	47	62	65	122	122	524
HR	11	11	9	12	13	15	13	84
IT	69	54	54	53	55	92	162	539
CY	0	1	0	3	1	1	1	7
LV	3	2	4	3	1	6	7	26
LT	-	-	-	-	-	-	-	-
LU	3	1	0	1	0	0	0	5
HU	10	15	18	17	18	26	15	119
MT	-	-	-	-	-	-	-	-
NL	4	5	6	0	10	11	7	43
AT	12	6	2	6	5	11	7	49
PL	69	88	67	90	104	114	119	651
PT	7	16	12	8	14	25	24	106
RO	58	40	29	64	64	52	108	415
SI	1	1	2	2	3	3	5	17
SK	-	-	-	-	-	-	-	-
FI	5	3	2	7	5	11	10	43
SE	5	4	5	5	5	7	11	42
UK	42	25	29	32	50	62	47	287
EU*	527	519	431	578	642	849	968	2.897
%	18,2%	17,9%	14,9%	19,9%	22,2%	29,3%	33,4%	100,0%
IS	0	0	0	0	1	0	3	4
NO	5	5	3	4	4	6	6	33
CH	2	2	2	3	1	10	9	29

Source: CARE database, data available in May 2015

* Totals for EU include latest available data (Lithuanian data not included in the totals)

Table 46: Number of fatalities by day of week by country, 2013 (pedestrians)

	Monday	Tuesday	Wednesday	Thursday	Friday	Saturday	Sunday	Total
BE	19	7	16	15	15	13	14	99
BG	-	-	-	-	-	-	-	-
CZ	24	26	26	21	26	21	18	162
DK	7	3	6	8	2	4	3	33
DE	83	86	65	89	98	65	75	561
EE	-	-	-	-	-	-	-	-
IE	-	-	-	-	-	-	-	-
EL	20	25	20	17	25	27	17	151
ES	40	51	51	69	64	52	42	371
FR	60	69	80	72	74	66	44	465
HR	8	13	7	12	13	10	6	69
IT	85	79	73	83	87	72	70	549
CY	0	3	1	1	2	0	1	8
LV	6	12	9	12	15	7	9	70
LT	-	-	-	-	-	-	-	-
LU	0	2	1	1	0	1	0	5
HU	18	24	23	21	30	19	12	147
MT	-	-	-	-	-	-	-	-
NL	4	12	10	7	5	4	9	51
AT	12	11	10	17	14	12	6	82
PL	163	148	157	176	169	172	155	1.140
PT	18	27	12	28	19	23	17	144
RO	95	121	93	109	112	92	104	726
SI	4	2	0	2	6	4	2	20
SK	-	-	-	-	-	-	-	-
FI	4	7	6	6	6	1	4	34
SE	4	3	6	10	4	11	4	42
UK	49	55	59	44	78	73	47	405
EU*	773	839	783	890	916	798	711	5.712
%	13,5%	14,7%	13,7%	15,6%	16,0%	14,0%	12,5%	100,0%
IS	0	0	0	1	0	0	0	1
NO	1	5	1	4	1	1	5	18
CH	10	9	9	12	11	13	5	69

Source: CARE database, data available in May 2015

* Totals for EU include latest available data (Lithuanian data not included in the totals)

Table 47: Number of fatalities by hour of day (00-08) by country, 2013

	00	01	02	03	04	05	06	07	08
BE	29	20	25	22	22	20	37	23	30
BG	-	-	-	-	-	-	-	-	-
CZ	14	11	13	19	10	31	38	33	26
DK	3	7	4	2	2	1	13	12	7
DE	67	52	63	56	53	91	127	140	109
EE	-	-	-	-	-	-	-	-	-
IE	-	-	-	-	-	-	-	-	-
EL	25	23	26	32	21	29	42	42	35
ES	30	31	27	23	29	42	55	64	85
FR	104	70	73	69	76	87	129	148	127
HR	8	11	13	2	14	20	21	12	11
IT	108	92	100	96	56	72	91	109	131
CY	0	1	2	2	5	0	1	2	1
LV	4	6	1	3	2	4	3	4	5
LT	-	-	-	-	-	-	-	-	-
LU	0	1	0	2	1	4	4	1	4
HU	8	11	6	16	14	26	34	28	26
MT	-	-	-	-	-	-	-	-	-
NL	10	5	13	12	7	16	16	14	14
AT	5	6	12	7	14	13	25	18	8
PL	67	54	50	56	60	102	169	116	88
PT	14	15	13	15	14	12	19	28	49
RO	50	46	52	29	41	53	80	68	56
SI	1	1	3	5	5	4	7	3	3
SK	-	-	-	-	-	-	-	-	-
FI	12	8	3	4	6	6	6	11	10
SE	4	5	7	4	3	3	10	6	7
UK	52	42	29	39	27	36	55	56	57
EU*	639	579	576	544	533	706	1.043	980	959
%	2,4%	2,2%	2,2%	2,1%	2,0%	2,7%	4,0%	3,8%	3,7%
IS	0	1	1	0	0	0	0	1	0
NO	5	1	2	5	4	4	5	6	8
CH	6	8	2	8	3	7	7	5	10

Source: CARE database, data available in May 2015

* Totals for EU include latest available data (Lithuanian data not included in the totals)

Table 48: Number of fatalities by hour of day (09-16) by country, 2013

	09	10	11	12	13	14	15	16
BE	28	21	29	26	27	38	41	52
BG	-	-	-	-	-	-	-	-
CZ	29	27	25	30	36	40	38	45
DK	11	13	8	9	12	12	14	13
DE	157	148	166	166	178	229	268	211
EE	-	-	-	-	-	-	-	-
IE	-	-	-	-	-	-	-	-
EL	35	48	21	60	39	27	40	36
ES	66	70	98	90	99	93	83	98
FR	121	137	144	110	104	161	221	212
HR	19	4	12	14	13	17	26	26
IT	151	158	167	160	163	137	174	191
CY	2	4	0	2	0	0	3	1
LV	9	7	1	9	7	6	9	12
LT	-	-	-	-	-	-	-	-
LU	0	0	1	1	2	8	1	3
HU	38	27	23	28	29	31	29	30
MT	-	-	-	-	-	-	-	-
NL	13	35	29	23	33	37	28	36
AT	17	23	29	12	18	38	34	35
PL	123	112	140	137	144	175	171	271
PT	16	25	28	22	28	24	41	42
RO	53	77	57	75	72	104	72	95
SI	1	5	7	7	5	7	4	5
SK	-	-	-	-	-	-	-	-
FI	12	10	12	16	10	21	19	21
SE	7	13	18	19	18	17	15	18
UK	67	77	85	91	94	90	104	136
EU*	1.032	1.097	1.175	1.158	1.187	1.379	1.524	1.687
%	4,0%	4,2%	4,5%	4,4%	4,6%	5,3%	5,8%	6,5%
IS	0	0	1	1	0	4	3	1
NO	7	4	14	8	12	19	15	14
CH	21	16	12	14	14	13	23	14

* Source: CARE database, data available in May 2015

* Totals for EU include latest available data (Lithuanian data not included in the totals)

Table 49: Number of fatalities by hour of day (17-24) by country, 2013

	17	18	19	20	21	22	23	unknown	Total
BE	44	39	24	42	21	31	32	0	723
BG	-	-	-	-	-	-	-	-	-
CZ	32	38	37	23	22	17	20	0	654
DK	10	8	8	11	7	0	4	0	191
DE	269	222	165	123	95	106	78	0	3.339
EE	-	-	-	-	-	-	-	-	-
IE	-	-	-	-	-	-	-	-	-
EL	46	46	38	31	51	44	42	0	879
ES	115	96	104	107	67	65	43	0	1.680
FR	264	234	208	153	115	104	97	0	3.268
HR	23	16	16	16	20	18	16	0	368
IT	190	219	223	165	187	122	113	10	3.385
CY	0	6	0	4	2	4	2	0	44
LV	21	9	18	11	4	6	7	11	179
LT	-	-	-	-	-	-	-	-	-
LU	5	2	5	0	0	0	0	0	45
HU	38	36	42	19	17	23	12	0	591
MT	-	-	-	-	-	-	-	-	-
NL	24	20	18	23	16	18	16	0	476
AT	46	33	10	18	17	11	6	0	455
PL	245	253	189	196	190	153	96	0	3.357
PT	42	48	41	41	27	18	15	0	637
RO	144	119	146	118	101	87	66	0	1.861
SI	12	14	6	8	5	7	0	0	125
SK	-	-	-	-	-	-	-	-	-
FI	18	17	11	9	10	1	5	0	258
SE	18	13	10	10	12	8	4	11	260
UK	131	104	92	74	78	87	66	1	1.770
EU*	1.846	1.711	1.498	1.274	1.136	993	797	37	26.090
%	7,1%	6,6%	5,7%	4,9%	4,4%	3,8%	3,1%	0,1%	100,0%
IS	1	1	0	0	0	0	0	0	15
NO	10	12	8	12	5	2	5	0	187
CH	24	20	13	9	5	11	4	0	269

Source: CARE database, data available in May 2015

* Totals for EU include latest available data (Lithuanian data not included in the totals)

Figure 24: Number of fatalities by hour of day in the EU, 2004 and 2013

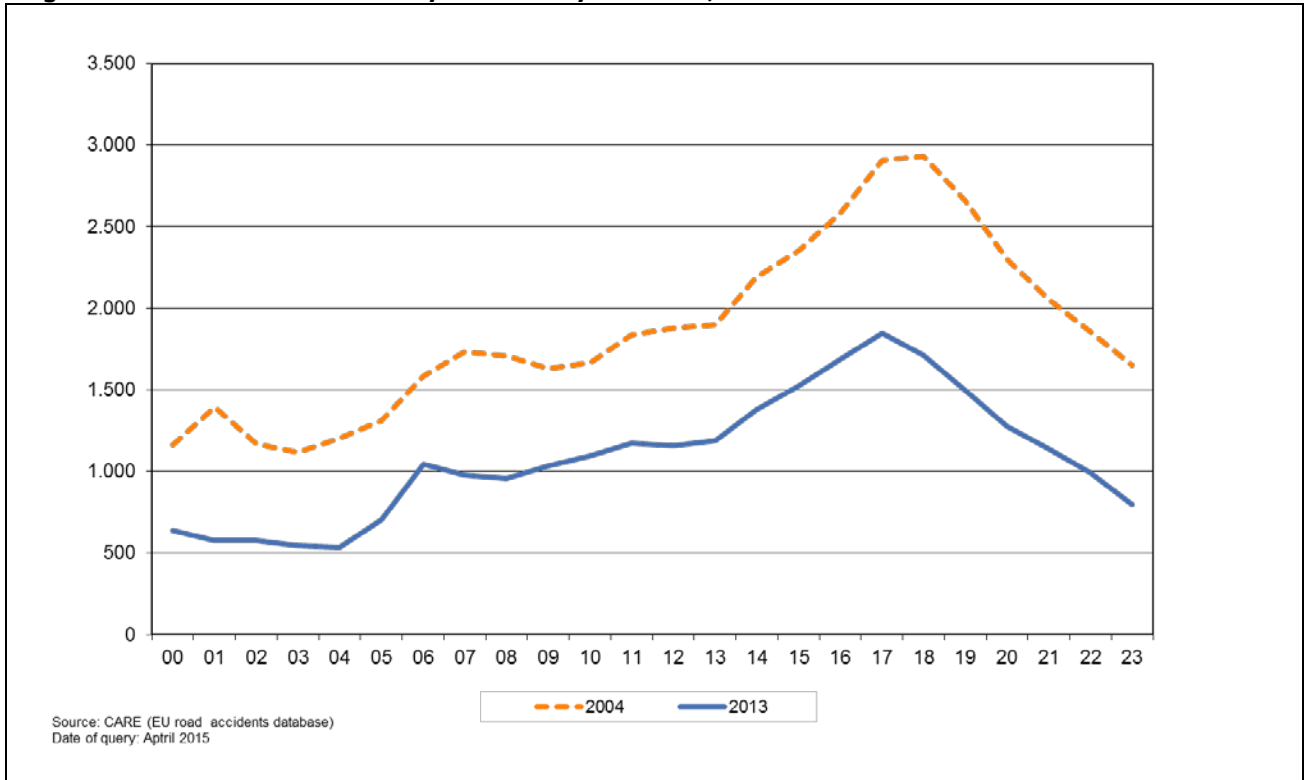


Figure 25: Distribution of fatalities by hour of day and person class in the EU, 2013

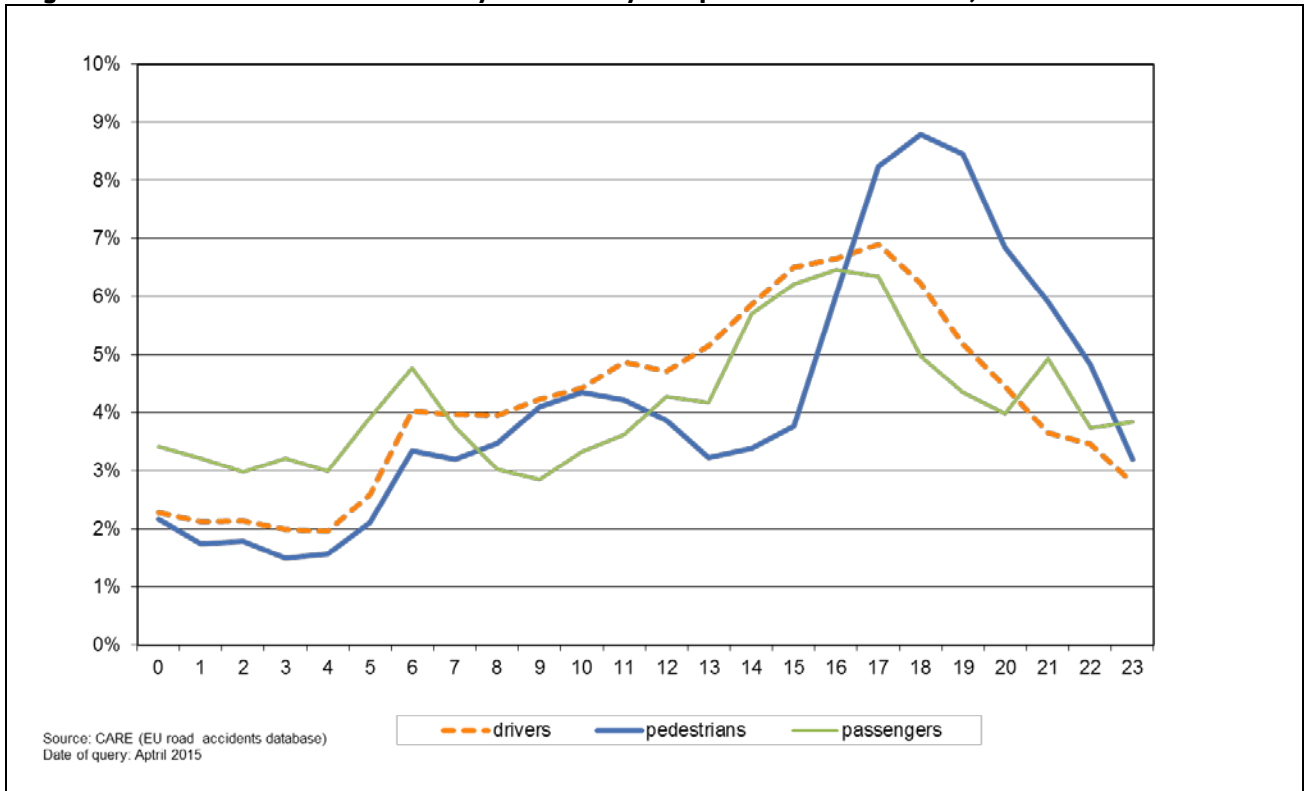
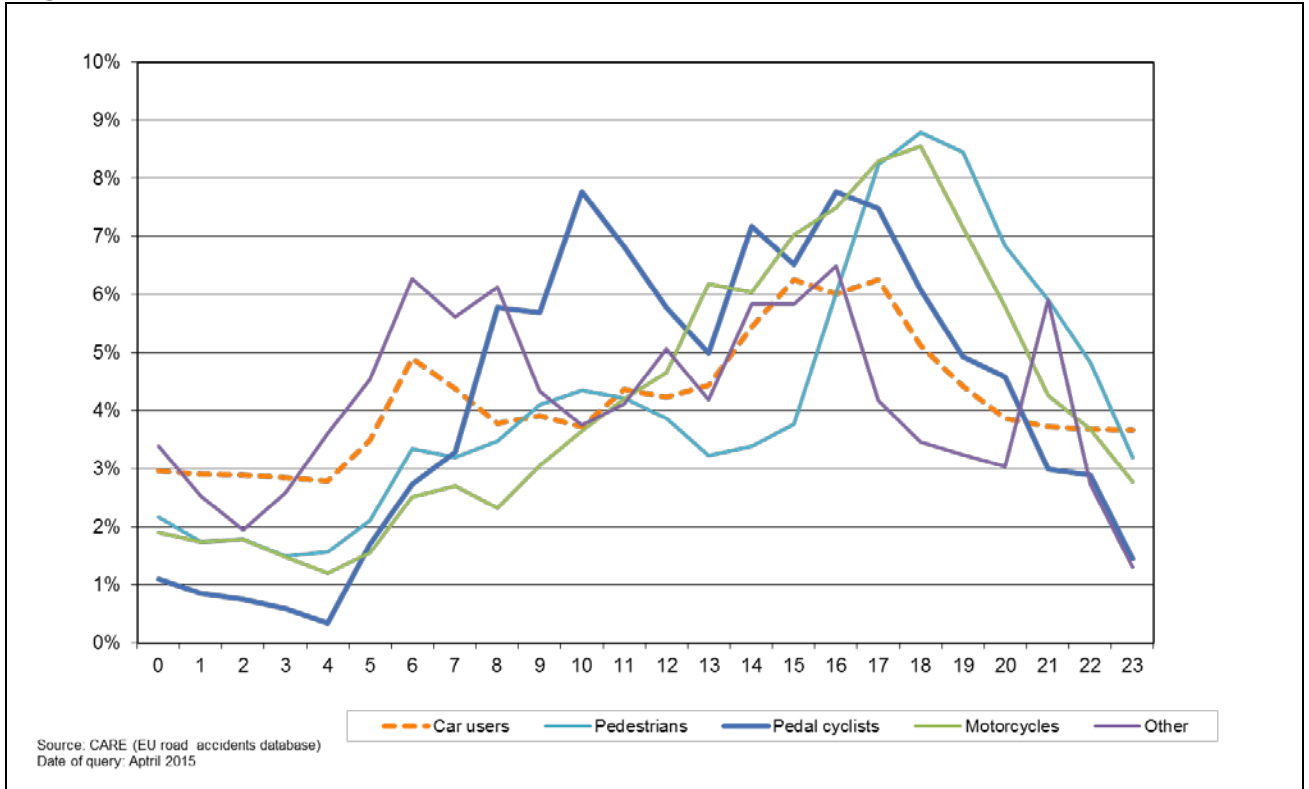


Figure 26: Distribution of fatalities by hour of day and mode of transport in the EU, 2013



4.3.2 Type of area/road

Figure 27: Number of fatalities by type of area by country, 2013

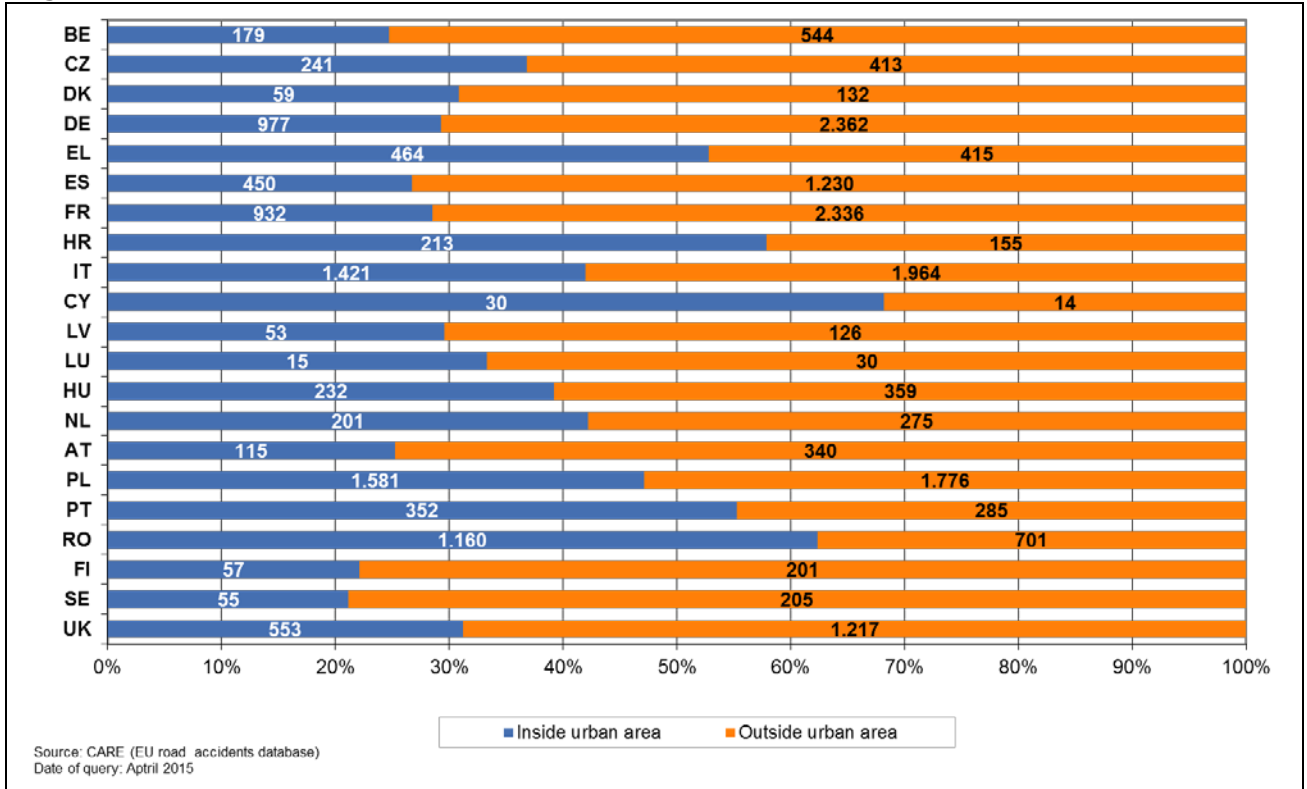


Table 50: Number of fatalities by type of area and road by country, 2013

	inside urban area	outside urban area			Total
		motorway	nomotorway	unknown	
BE	179	93	451	0	723
BG	-	-	-	-	-
CZ	241	25	388	0	654
DK	59	12	120	0	191
DE	977	428	1.934	0	3.339
EE	-	-	-	-	-
IE	-	-	-	-	-
EL	464	79	336	0	879
ES	450	291	939	0	1.680
FR	932	238	2.098	0	3.268
HR	213	38	117	0	368
IT	1.421	321	1.643	0	3.385
CY	30	2	12	0	44
LV	53	0	126	0	179
LT	-	-	-	-	-
LU	15	6	24	0	45
HU	232	30	329	0	591
MT	-	-	-	-	-
NL	201	57	203	15	476
AT	115	31	309	0	455
PL	1.581	40	1.736	0	3.357
PT	352	44	241	0	637
RO	1.160	24	677	0	1.861
SI	-	-	-	-	-
SK	-	-	-	-	-
FI	57	8	193	0	258
SE	55	18	181	6	260
UK	553	92	1.125	0	1.770
EU*	9.919	1.952	14.203	21	26.095
%	38,0%	7,5%	54,4%	0,1%	100,0%
IS	4	0	11	0	15
NO	31	0	153	3	187
CH	113	23	133	0	269

* Source: CARE database, data available in May 2015

* Totals for EU include latest available data (Lithuanian data not included in the totals)

4.3.3 Type of junction

Table 51: Number of fatalities by type of junction by country, 2013

	not at a junction	Junction Type							Total
		crossroad	multiple junction	roundabout	T or staggered junction	Not at grade (interchange)	Other	Unknown	
BE	585	0	0	5	0	0	133	0	723
BG	-	-	-	-	-	-	-	-	-
CZ	514	56	0	2	69	0	13	0	654
DK	138	22	0	1	23	0	7	0	191
DE	2.644	0	0	0	0	0	0	695	3.339
EE	-	-	-	-	-	-	-	-	-
IE	-	-	-	-	-	-	-	-	-
EL	801	0	0	0	0	0	0	78	879
ES	1.365	116	0	34	104	0	60	0	1.680
FR	2.823	199	0	38	133	0	75	0	3.268
HR	303	23	0	0	23	0	15	4	368
IT	2.627	276	0	55	426	1	0	0	3.385
CY	32	4	0	0	7	0	1	0	44
LV	164	0	0	0	0	0	15	0	179
LT	-	-	-	-	-	-	-	-	-
LU	38	1	0	1	5	0	0	0	45
HU	491	48	1	1	47	0	3	0	591
MT	-	-	-	-	-	-	-	-	-
NL	293	162	0	7	0	0	14	0	476
AT	354	56	0	1	8	0	36	0	455
PL	2.807	511	0	6	0	0	33	0	3.357
PT	533	22	0	8	53	7	3	11	637
RO	1.648	185	0	0	0	0	28	0	1.861
SI	123	3	0	1	0	0	3	0	130
SK	-	-	-	-	-	-	-	-	-
FI	214	0	0	0	0	0	0	44	258
SE	0	0	0	0	0	0	0	260	260
UK	1.123	95	8	46	394	0	103	1	1.770
EU*	20.799	1.912	9	211	1.338	25	548	1.252	26.095
%	79,7%	7,3%	0,0%	0,8%	5,1%	0,1%	2,1%	4,8%	100,0%
IS	12	0	0	0	3	0	0	0	15
NO	0	0	0	0	0	0	0	187	187
CH	0	15	0	0	24	0	0	230	269

Source: CARE database, data available in May 2015

* Totals for EU include latest available data (Lithuanian data not included in the totals)

4.3.4 Weather conditions

Figure 28: Number of fatalities by weather conditions in the EU, 2013

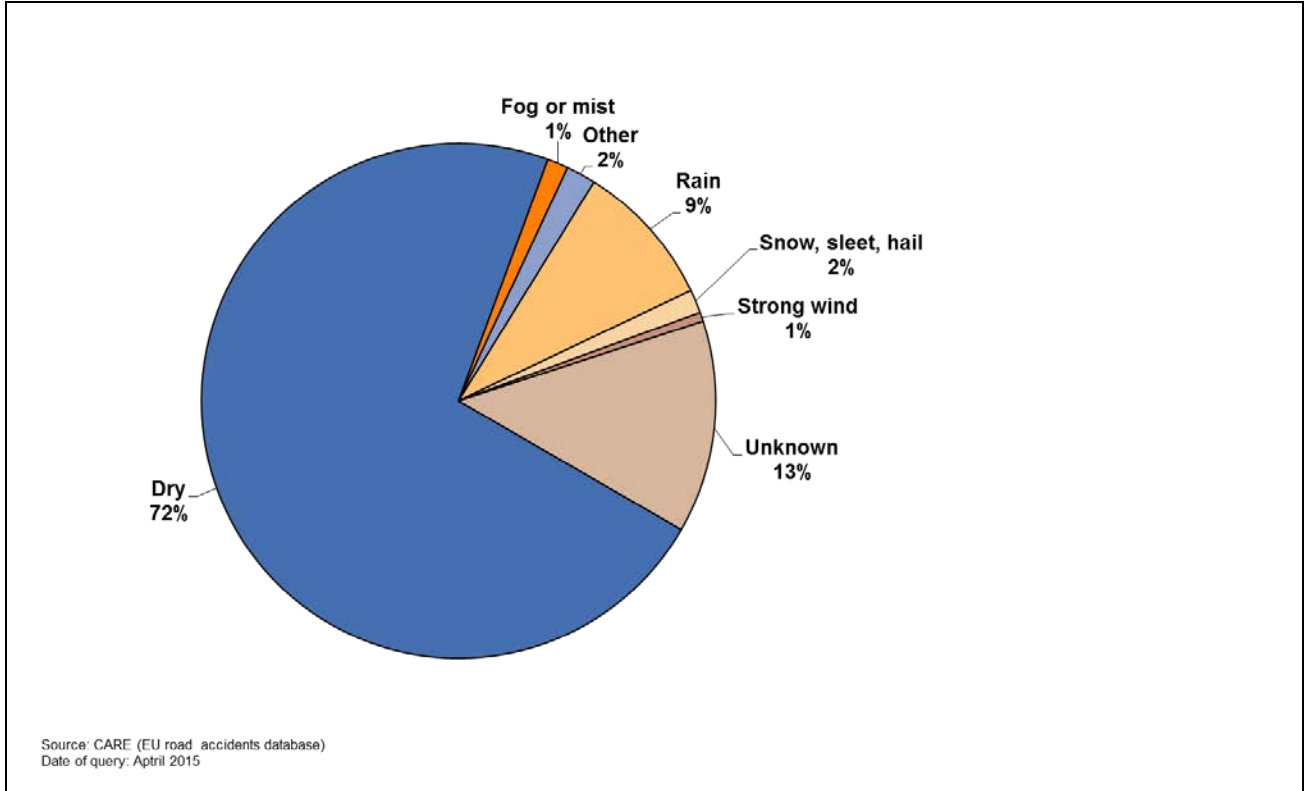


Table 52: Number of fatalities by weather conditions by country, 2013

	dry	fogormist	Other	rain	snow, sleet, hail	strong wind	unknown	Total
BE	511	13	4	53	10	4	128	723
BG	-	-	-	-	-	-	-	-
CZ	545	9	6	63	30	1	0	654
DK	171	2	0	13	0	2	3	191
DE	0	11	54	0	0	7	3.267	3.339
EE	-	-	-	-	-	-	-	-
IE	-	-	-	-	-	-	-	-
EL	791	2	15	67	0	4	0	879
ES	1.429	16	51	153	13	17	0	1.680
FR	2.661	49	48	449	43	17	1	3.268
HR	312	6	0	45	5	0	0	368
IT	2.670	57	272	352	26	8	0	3.385
CY	43	0	0	1	0	0	0	44
LV	156	2	0	16	5	0	0	179
LT	-	-	-	-	-	-	-	-
LU	40	2	0	3	0	0	0	45
HU	534	13	1	33	10	0	0	591
MT	-	-	-	-	-	-	-	-
NL	410	1	0	38	8	1	18	476
AT	393	8	0	37	16	1	0	455
PL	2.782	66	0	356	110	43	0	3.357
PT	508	6	0	120	0	1	2	637
RO	1.625	48	0	162	24	2	0	1.861
SI	-	-	-	-	-	-	-	-
SK	-	-	-	-	-	-	-	-
FI	197	3	0	24	13	0	21	258
SE	208	7	0	22	12	0	11	260
UK	1.474	2	27	190	20	37	20	1.770
EU*	18.870	344	486	2.381	385	148	3.480	26.095
%	72,3%	1,3%	1,9%	9,1%	1,5%	0,6%	13,3%	100,0%
IS	10	0	0	3	1	0	1	15
NO	88	2	53	21	8	0	15	187
CH	234	0	3	25	7	0	0	269

Source: CARE database, data available in May 2015

* Totals for EU include latest available data (Lithuanian data not included in the totals)

5 Glossary

The CARE glossary provides short definitions for variables used in the Annual Statistical Report, and includes short definitions of CARE common values.

The glossary has two components:

- a) A **definition** of the common value
- b) The **availability** of the common value in the data file for each Member State.

ACCIDENT

ACCIDENT

Definition: Occurs on a public road. Occurs on a private road to which the public has right of access (except BE, NL, PT). Involves at least one moving vehicle (except UK, PT). Involves at least one injured or killed person. Is reported by the police. Self reporting possible (BE, UK, EL, IT, IE). Self reporting not possible (DK, FI, NL, AT, PT). Confirmed suicides excluded (BE, UK, IE, NL, AT, DK, PT). Confirmed suicides included (ES, IT, LU).

Note: The variation in the groups of road and the coverage of the injury categories included in injury accidents, together with differences in the level of self reported accidents, will lead to significant variations in the number of injury accidents reported, and their reporting rate, between Member States.

FATAL ACCIDENT

Definition: Accident with at least one killed person regardless the injury severity of any other involved persons.

Note: See “killed” definition from Injury Severity defined in Person type item (Death within 30 days of a road accident [UN/ECE Geneva 1995 – Statistics of Road Traffic Accidents in Europe and North America], except AT [3 days before 1992], ES [24 hours in CARE; 24 hours before 1993 in publication], FR [6 days], EL [24 hours], IT [7 days], PT [24 hours]. Suicide not included [except DK, ES, FR]. Natural death not included [except LU, SE]).

Data availability: All countries

TIME TYPE ITEMS

MONTH

Definition: Calendar month

Data availability: All countries (except DK)

HOUR

Definition: Period of 60 minutes. Rounded down to whole hours (except EL, ES, IT: rounded to nearest hour).

Note: Winter time is:

- GMT from November to March (DE from 1996 onwards, GB, IE, NI, PT)
- GMT +1 hour from October to March (BE, AT, DK prior to 1996, DK, ES, FR, IT, LU, NL, SE)
- GMT +2 hours from October to March (EL, FI).

Summer time is one hour ahead of winter time:

- GMT +1 hour from April to October (DK from 1996 onwards, GB, IE, NI, PT)
- GMT +2 hours from April to September (AT, BE, DK prior to 1996, DK, ES, FR, IT, LU, NL, SE)
- GMT +3 hours from April to September (EL, FI)

For PT, unknown hour coded as '12' during daytime and '0' during night time

Data availability: All countries (except DK)

DAY OF WEEK

Definition: 24 hour day within 7 day week.

Note: Data calculated by the CARE system from the date of accident, where data is not available in national files (AT from 1992 onwards, BE, FR prior to 1993, PT, SE).

Data availability: All countries.

PERSON CLASS

DRIVER

Definition: Person driving or riding any motorised vehicle or pedal cycle. Person herding animals is not a driver (except BE, AT). Learner driver is a driver (except ES, PT). Learner driver is a driver during a driving test, but not in a driving lesson (DK). Driving instructor is not a driver (except ES, PT). Driving instructor is a driver during a driving lesson, but not during a driving test (DK).

Note: Uninjured drivers are included in the database (except GB, NI, NL: implicitly included in vehicle records only). Data on driving instructors and learner drivers collected separately from 1993 onwards (SE).

Data availability: All countries.

PASSENGER

Definition: Person on or in a vehicle, who is not the driver. Includes person in the act of boarding or alighting from a vehicle (except DK). Learner driver is not a passenger (except ES, PT). Learner driver is a passenger during a driving lesson, but not during a driving test (DK). Driving instructor is a passenger (except ES, PT). Driving instructor is a passenger during a driving test, but not in a driving lesson (DK).

Note: Uninjured passengers not included in the database (except FR, IE, LU; ES, FI in some cases, AT).

Data availability: All countries.

PEDESTRIAN

Definition: Person on foot. Person pushing or holding bicycle (except DK). Person pushing a pram or pushchair. Person leading or herding an animal (except DK, AT). Person riding a toy cycle on the footway (except AT). Person on roller skates, skateboard or skis (except AT). Does not include person in the act of boarding or alighting from a vehicle (except DK, ES).

Note: Uninjured pedestrians not included in the database (except BE, IE, LU, NL implicitly included in element records; DK, FR, FI, AT, SE if they caused the accident; ES not consistently).

Data availability: All countries.

TYPE OF INJURY

INJURED

Definition: Injured with application of correcting coefficient as stated for the 'Killed at 30 days'. Injured in a road accident. Hospitalisation or medical treatment not necessarily required (except FR). Self declaration of injury (DK if slight; FI, GB, IT, IE, NI). Opinion of the police. Aggregation of

Annual Accident Report 2015

the following. injury severities: SERIOUSLYINJUREDASREPORTED + SLIGHTLY INJURED + INJURED - 1 COEFFICIENT

Data availability: All countries

FATALITIES

Definition: Death within 30 days of a road accident (UN/ECE Geneva 1995 – Statistics of Road Traffic Accidents in Europe and North America, annex 1). Suicide not included (except DK, ES, FR). Natural death not included (except LU, SE). Corrective factors have been applied to comply with this international definition for the following countries: EL (24 hours), ES (24 hours in CARE; 24 hours before 1993 in publication), FR (6 days), IT (7 days), AT (3 days before 1992), PT (24 hours).

Data availability: All countries.

Member State	Correcting factors		
Greece	K(30) = K * 1.18 up to 1995		
Spain	K(30) = K * 1.3 up to 1992		
	1993 up to 1996:		
		Outside urban area	Inside urban area
	Driver	K(30)=K+SI*2.46%	K(30)=K+SI*1.02%
	Passenger	K(30)=K+SI*2.29%	K(30)=K+SI*0.94%
	Pedestrian	K(30)=K+SI*7.22%	K(30)=K+SI*3.87%
	1997 up to 2000:		
		Outside urban area	Inside urban area
	Driver	K(30)=K+SI*2.44%	K(30)=K+SI*1.93%
	Passenger	K(30)=K+SI*2.17%	K(30)=K+SI*1.80%
	Pedestrian	K(30)=K+SI*4.76%	K(30)=K+SI*5.71%
	2001 up to 2004:		
		Outside urban area	Inside urban area
Driver	K(30)=K+SI*2.41%	K(30)=K+SI*2.17%	
Passenger	K(30)=K+SI*2.24%	K(30)=K+SI*2.15%	
Pedestrian	K(30)=K+SI*6.17%	K(30)=K+SI*4.34%	
France	K(30) = K * 1.09 up to 1993 K(30) = K * 1.057 from 1994 onwards		
Italy	K(30) = K * 1.078		
Austria	K(30) = K * 1.12 only for 1991		
Portugal	K(30) = K * 1.3 up to 1997 K(30) = K * 1.14 from 1998 onwards		
K: number of persons killed, SI: number of persons seriously injured			

GENDER

FEMALE

Definition: Determined by the police (except ES, IT, LU, AT, PT: on the basis of identity documents; DK, FI, SE: on the basis of personal ID number).

Data availability: All countries.

MALE

Definition: Determined by the police (except ES, IT, LU, AT, PT: on the basis of identity documents; DK, FI, SE: on the basis of personal ID number).

Data availability: All countries.

AGE

AGE

Definition: Length of life of person. Rounded down to whole number of years (except EL, IT, NI: rounded to nearest year).

Note: Age 0 to 1 is exceptionally rounded up (FR, IT, IE, LU, NI, PT). Age over 99 only available for ES, FR (1993 on), NL.

Data availability: All countries.

AREA TYPE

INSIDE URBAN AREA

Definition: Area inside urban area boundary signs (except IE, UK). Includes dual carriageways and national roads. Can include motorways (except DK, EL, IT). Opinion of the police (DK, SE).

Note: Data approximated from speed limit of 40 mph or less (IE, UK).

Data availability: All countries.

OUTSIDE URBAN AREA

Definition: Area outside urban area boundary signs. Opinion of the police (DK, SE). Includes motorways.

Note: Data approximated from speed limit of over 40 mph (IE, UK).

Data availability: All countries.

MOTORWAY

Definition: Public road with dual carriageways, and at least two lanes each way. Entrance and exit signposted. Road with grade separated interchanges. Road with a central barrier or central reservation. No crossing permitted. No stopping permitted unless in an emergency. Entry prohibited for pedestrians, animals, pedal cycles, mopeds, agricultural vehicles; learner drivers (BE, GB, EL, IE, NI, PT). Access restricted to motor vehicles (DK, FI, AT). Minimum speed between 50 km/h and 80 km/h (except FR, UK). Maximum speed between 100 km/h and 130 km/h (except DK recommended 130 km/h).

Data availability: All countries.

MODES OF TRANSPORT-VEHICLE GROUP

AGRICULTURAL TRACTOR

Definition: Motor vehicle for agricultural use, with wheels or caterpillar tracks, with at least two axles. Driving licence required (DK, EL, ES, FI, GB, IT, IE, LU, AT; not in FR). Maximum speed 30 km/h or 40 km/h.

Data availability: All countries (except DK prior to 1997, AT, FR, GB, IE from 1996 onwards, LU).

Value included in another value:

agricultural machine (FR), construction or agricultural machine (DK, AT prior to 1997), agricultural or industrial tractor (LU), other motor vehicle (GB), other (IE from 1996 onwards).

BUS OR COACH

Definition:

Motor vehicle with at least four wheels, used for transporting people. Public or private use. Type D driving licence required (BE, GB, IE, NI). Includes bus, more than 8 and 16 seats, minibus, trolley-bus (except LU), scheduled bus, unscheduled bus, school bus.

Data availability:

All countries.

CAR OR TAXI

Definition:

Includes car, taxi. Motor vehicle with four wheels. Used to transport only or mainly people. Seating for no more than 8 passengers. Type B driving licence required. Includes taxi-bus (NL).

Data availability:

All countries.

HEAVY GOODS VEHICLE

Definition:

Includes road tractor, road tractor with semi trailer, lorry over 3,5 tonnes. Motor vehicle with at least four wheels, with a permissible gross vehicle weight of over 3.5 tonnes, used only for the transport of goods. With or without a trailer. Type C driving licence required. Includes lorry, over 3.5 tonnes ; road tractor ; road tractor with semi-trailer ; lorry with trailer ; tanker (except FI).

Note:

Lorries cannot systematically be categorised as over 3.5 tonnes (DK, IT).

Data availability:

All countries (except DE, IT).

LORRY, LESS THAN 3,5 TONNES

Definition:

Motor vehicle with a permissible gross vehicle weight of less than 3.5 tonnes, used only for the transport of goods. Type B driving licence required.

Note:

Lorries cannot systematically be categorised as less than 3.5 tonnes (DK, IT).

Data availability:

All countries (except DK, IT, LU).

MOPED

Definition:

Motor vehicle with two wheels, with an engine size of less than 50 cc. Design speed between 25 km/h and 50 km/h. One or two seats. Minimum age for driver between 14 and 18 (except IT). No driving licence required (ES, FR, FI, GB, IT, PT, SE). Unregistered vehicle (BE, DK, ES, FR, SE).

Data availability:

All countries (except IE from 1996 onwards).

Value included in another value:

Two wheeled motor vehicle (IE from 1996 onwards).

MOTORCYCLE

Definition:

Motor vehicle with two or three wheels (not three wheeled in DK), with an engine size of more than 50 cc. With a trailer possible (except DK). With a sidecar possible. Registered vehicle (except PT). Type A driving licence required. Includes motor scooter (except FR).

Data availability:

All countries (except IE from 1996 onwards).

Value included in another value: two wheeled motor vehicle (IE from 1996 onwards).

OTHER VEHICLE

Definition: Includes other non-motor vehicle, other motor vehicle.

PEDAL CYCLE

Definition: Vehicle with at least two wheels, without engine, moved by pedals or hand cranks. With or without a trailer. With or without passengers. Ridden in the carriageway. Ridden on the pavement (except DK, LU).

Data availability: All countries.

PEDESTRIAN

Definition: Wherever a person's person class has been identified as being pedestrian, its vehicle type is "pedestrian". This as opposed to older version of CARE where a pedestrian didn't have a vehicle type.

Data availability: All countries.

JUNCTION TYPE

JUNCTION

Definition: Road intersection with three or more arms. Not grade separated. Includes t junction, y junction, crossroad, level crossing (except DK, FI, GB, NI), roundabout (except FR), multiple junction.

Data availability: All countries (except EL).

CROSSROAD

Definition: Road intersection with four arms. Opinion of the police (DK, ES, FI; not AT).

Data availability: All countries (except BE, EL).

NOT AT A JUNCTION

Definition: Position on road more than 20m from a junction or roundabout (GB, IE, NI, NL, AT). Position on road more than 50m from a junction (FR). Opinion of the police (BE, DK, ES, FI, IT, LU, SE).

Data availability: All countries (except EL).

ROUNDABOUT

Definition: Circular highway. Includes sections of the road leading into it, within 20m (GB, IE, NI, AT). Opinion of the police (DK, ES, FR, IT).

Data availability: All countries (except BE, DK, EL, FI, LU, PT).

T OR Y JUNCTION

Definition: Road intersection with three arms. Includes t junction, y junction, staggered junction.

Data availability: All countries (except BE, EL, FI, IT, PT).

6 List of tables

Table 1:	Annual number of injury accidents by country, 2004-2013	7
Table 2:	Annual number of fatalities by country, 2004-2013	10
Table 3:	Annual number of fatal accidents by country, 2004-2013	13
Table 4:	Annual number of pedestrian fatalities by country, 2004-2013	17
Table 5:	Annual number of pedal cyclist rider and passenger fatalities by country, 2004-2013	18
Table 6:	Annual number of moped rider and passenger fatalities by country, 2004-2013	19
Table 7:	Annual number of motorcycle rider and passenger fatalities by country, 2004-2013	20
Table 8:	Annual number of car and taxi driver and passenger fatalities by country, 2004-2013	22
Table 9:	Annual number of heavy goods vehicles >3,5t fatalities by country, 2004-2013	23
Table 10:	Annual number of lorries <3,5t fatalities by country, 2004-2013	24
Table 11:	Annual number of buses or coaches fatalities by country, 2004-2013	25
Table 12:	Annual number of fatalities by age group by country, 2004-2005	28
Table 13:	Annual number of fatalities by age group by country, 2006-2007	29
Table 14:	Annual number of fatalities by age group by country, 2008-2009	30
Table 15:	Annual number of fatalities by age group by country, 2010-2011	31
Table 16:	Annual number of fatalities by age group by country, 2012-2013	32
Table 17:	Annual number of female fatalities by country, 2004-2013	33
Table 18:	Annual number of male fatalities by country, 2004-2013	34
Table 19:	Annual number of female fatalities by country, drivers, 2004-2013	36
Table 20:	Annual number of male fatalities by country, drivers, 2004-2013	37
Table 21:	Annual number of female fatalities by country, passengers, 2004-2013	38
Table 22:	Annual number of male fatalities by country, passengers, 2004-2013	39
Table 23:	Annual number of female fatalities by country, pedestrians, 2004-2013	40
Table 24:	Annual number of male fatalities by country, pedestrians, 2004-2013	41
Table 25:	Number of total fatalities by age group by country, 2013	42
Table 26:	Number of female fatalities by age group by country, 2013	43
Table 27:	Number of male fatalities by age group by country, 2013	44
Table 28:	Number of pedestrian fatalities by age group by country, 2013	45
Table 29:	Number of pedal cyclist fatalities by age group by country, 2013	46
Table 30:	Number of moped rider and passenger fatalities by age group by country, 2013	47
Table 31:	Number of motorcycle rider and passenger fatalities by age group by country, 2013	48
Table 32:	Number of car driver and passenger fatalities by age group by country, 2013	49
Table 33:	Number of fatalities by mode of transport and type of area by country (part 1), 2013	51
Table 34:	Number of fatalities by mode of transport and type of area by country (part 2), 2013	52
Table 35:	Number of fatalities by month by country (January to June), 2013	55
Table 36:	Number of fatalities by month by country (July to December), 2013	56
Table 37:	Number of driver fatalities by month by country (January to June), 2013	57
Table 38:	Number of driver fatalities by month by country (June to December), 2013	58
Table 39:	Number of passenger fatalities by month by country (January to June), 2013	59
Table 40:	Number of passenger fatalities by month by country (July to December), 2013	60
Table 41:	Number of pedestrian fatalities by month by country (January to June), 2013	61
Table 42:	Number of pedestrian fatalities by month by country (July to December), 2013	62
Table 43:	Total number of fatalities by day of week by country, 2013	64
Table 44:	Number of fatalities by day of week by country, 2013 (drivers)	65
Table 45:	Number of fatalities by day of week by country, 2013 (passengers)	66
Table 46:	Number of fatalities by day of week by country, 2013 (pedestrians)	67
Table 47:	Number of fatalities by hour of day (00-08) by country, 2013	68
Table 48:	Number of fatalities by hour of day (09-16) by country, 2013	69
Table 49:	Number of fatalities by hour of day (17-24) by country, 2013	70
Table 50:	Number of fatalities by type of area and road by country, 2013	74
Table 51:	Number of fatalities by type of junction by country, 2013	75
Table 52:	Number of fatalities by weather conditions by country, 2013	77

7 List of figures

Figure 1:	Annual number of fatalities, injury accidents and injured people in the EU, 2004-2013	5
Figure 2:	Fatalities per million inhabitants in the EU, 2013 compared to 2004	5
Figure 3:	Percentage change in number of fatalities and injury accidents by country, 2013 and 2004	6
Figure 4:	Annual number of injury accidents by country (part 1), 2004-2013	8
Figure 5:	Annual number of injury accidents by country (part 2), 2004-2013	8
Figure 6:	Annual number of injury accidents by country (part 3), 2004-2013	9
Figure 7:	Annual number of injury accidents by country (part 4), 2004-2013	9
Figure 8:	Annual number of fatalities by country (part 1), 2004-2013	11
Figure 9:	Annual number of fatalities by country (part 2), 2004-2013	11
Figure 10:	Annual number of fatalities by country (part 3), 2004-2013	12
Figure 11:	Annual number of fatalities by country (part 4), 2004-2013	12
Figure 12:	Share of fatalities by area type in the EU, 2013	14
Figure 13:	Distribution of male and female fatalities by person class in the EU, 2013	14
Figure 14:	Distribution of fatalities by mode of transport in the EU, 2013	15
Figure 15:	Percentage change in number of fatalities by mode of transport in the EU, 2013 and 2004	16
Figure 16:	Annual number of fatalities by mode of transport (drivers and passengers, vulnerable modes) in the EU, 2004-2013	21
Figure 17:	Annual number of drivers and passengers fatalities by mode of transport in the EU, 2004-2013	26
Figure 18:	Increase/decrease of number of fatalities by gender in the EU, 2013 and 2004	27
Figure 19:	Annual distribution of fatalities by gender in the EU, 2004-2013	35
Figure 20:	Fatalities by type of area and mode of transport in the EU, 2013	50
Figure 21:	Number of fatalities by month in the EU, 2013	53
Figure 22:	Number of fatalities by month and person class in the EU, 2013	53
Figure 23:	Total number of fatalities by day of week and person class in the EU, 2013	63
Figure 24:	Number of fatalities by hour of day in the EU, 2004 and 2013	71
Figure 25:	Distribution of fatalities by hour of day and person class in the EU, 2013	71
Figure 26:	Distribution of fatalities by hour of day and mode of transport in the EU, 2013	72
Figure 27:	Number of fatalities by type of area by country, 2013	73
Figure 28:	Number of fatalities by weather conditions in the EU, 2013	76

