



Annual Accident Report 2018



CONTENTS

1	Introduction	3
1.1	The CARE Database	3
1.2	Notes	4
2	Overview – major issues	5
2.1	EU– Developments	5
2.2	Interesting Details	14
3	Time Series – last 10 years in detail	16
3.1	Time series related to mode of transport	16
3.2	Time series related to age and gender	27
4	Fatalities 2016	42
4.1	People involved	42
4.1.1	Age and gender	42
4.2	Modes of transport	45
4.2.1	Mode of transport by age	45
4.2.2	Mode of transport by type of area	50
4.3	Accident characteristics	53
4.3.1	Various periods of time (month, day of week, hour of day)	53
4.3.2	Type of area/road	73
4.3.3	Type of junction	75
4.3.4	Weather conditions	76
5	Glossary	78
6	List of tables	84
7	List of figures	85

1 Introduction

1.1 The CARE Database

Community database on **A**ccidents on the **R**oads in **E**urope

Road traffic accidents in the Member States of the European Union claim about 25.600 lives and leave more than 1,4 million people injured in 2016. Since 1984, a large number of measures to reduce road accidents have been taken at regional level. Along with these measures, the Council adopted a Decision on 30 November 1993 on the creation of a Community database on road accidents (93/704/EC)¹, the CARE project.

It was commonly agreed that such a database at the Community level would make it possible to identify and quantify road safety problems, evaluate the efficiency of road safety measures, determine the relevance of Community actions and facilitate the exchange of experience in this field. After a pilot phase of about 3 years, the Council endorsed the “Report from the Commission on the progress with the project and its future prospects” (COM(97) 238 final).

CARE is a Community database on road accidents resulting in death or injury (no statistics on damage-only accidents are kept). The major difference between CARE and most other existing international databases is the high level of disaggregation, i.e. CARE is based on detailed data of individual accidents as collected by the Member States. This structure allows for maximum flexibility and potential with regard to analysing the information contained in the system and opens up a whole set of new possibilities in the field of accident analysis.

National data sets are integrated into the CARE database in their original national structure and definitions, with confidential data blanked out. However, transformation rules are implemented in the CARE database in order to increase data compatibility and thus enhance the functioning of the system.

The process of improving “homogenisation” of accident data within CARE is underway. In the meantime, the inherent incompatibility of national accident data remains a source of possible misinterpretation when performing comparative analyses at international level. Therefore, on-line access to the CARE database is currently restricted to expert users. The summary statistical tables and figures contained here provide an overview of road accident data from 2007 to 2016. For some figures other sources than CARE have been used in order to give an overview of EU road accident data.

¹ OJ No 329, 30.12.1993, p. 63.

1.2 Notes

1. Country abbreviations

	Belgium	BE		Italy	IT		Romania	RO
	Bulgaria	BG		Cyprus	CY		Slovenia	SI
	Czech Republic	CZ		Latvia	LV		Slovakia	SK
	Denmark	DK		Lithuania	LT		Finland	FI
	Germany	DE		Luxembourg	LU		Sweden	SE
	Estonia	EE		Hungary	HU		United Kingdom	UK
	Ireland	IE		Malta	MT			
	Greece	EL		Netherlands	NL		Iceland	IS
	Spain	ES		Austria	AT		Liechtenstein	LI
	France	FR		Poland	PL		Norway	NO
	Croatia	HR		Portugal	PT		Switzerland	CH

2. Sources: CARE (Community database on road accidents)

The glossary of definitions of variables used in this Report is in the appendix, the full glossary is available at: http://ec.europa.eu/transport/road_safety/sites/roadsafety/files/cadas_glossary_v3.pdf.

3. Data available in May 2018.

4. Data refer to 2016 and when not available the latest available data are used (2010 data for SK, 2014 data for IE and 2015 data for BG, EE and LT). Totals and related average percentages for EU also include latest available data.

5. This 2018 edition of Annual Accident Report updates the previous versions produced within the EU co-funded research projects SafetyNet and DaCoTA under the name Annual Statistical Report.

6. Disclaimer

This report has been produced by the National Technical University of Athens ([NTUA](#)), the Austrian Road Safety Board ([KFV](#)) and the European Union Road Federation ([ERF](#)) under a contract with the [European Commission](#). Whilst every effort has been made to ensure that the matter presented in this report is relevant, accurate and up-to-date, the Partners cannot accept any liability for any error or omission, or reliance on part or all of the content in another context. Any information and views set out in this report are those of the author(s) and do not necessarily reflect the official opinion of the Commission. The Commission does not guarantee the accuracy of the data included in this study. Neither the Commission nor any person acting on the Commission's behalf may be held responsible for the use that may be made of the information contained therein.

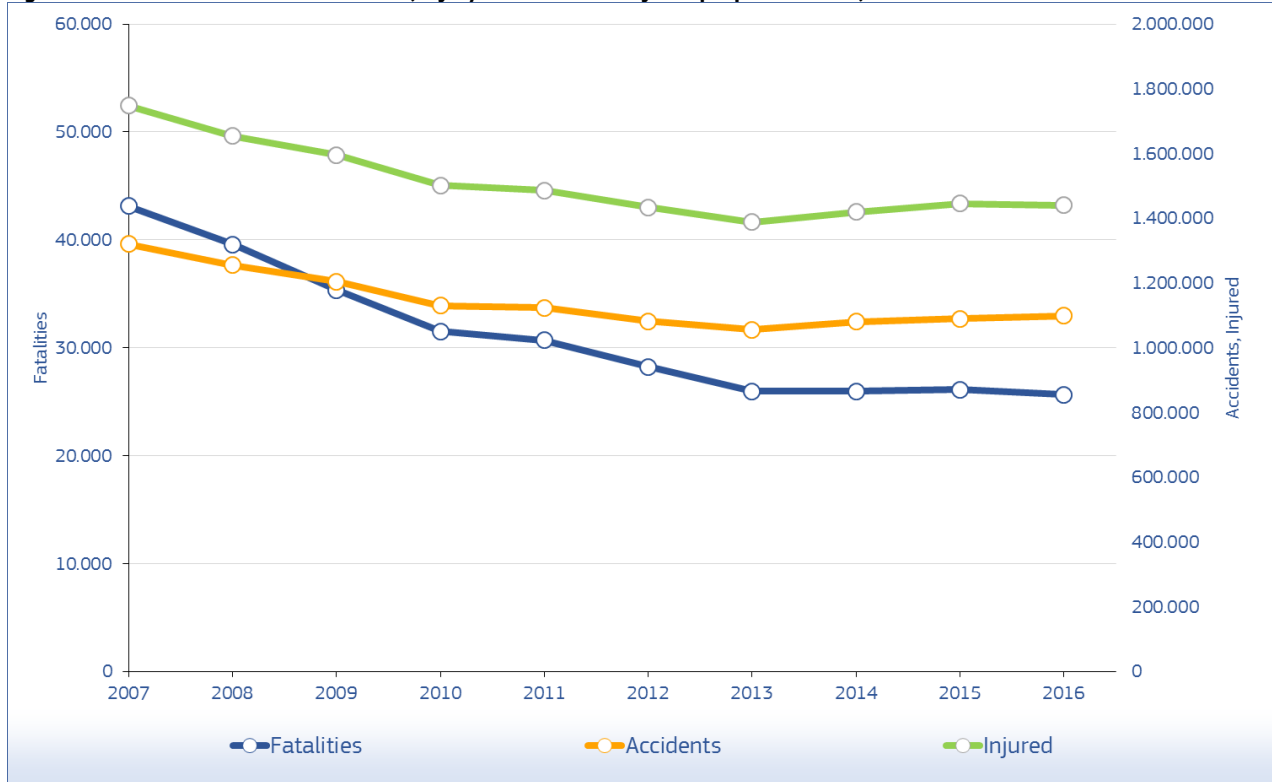
7. Please refer to this Report as follows:

European Commission, Annual Accident Report. European Commission, Directorate General for Transport, June 2018.

2 Overview – major issues

2.1 EU- Developments

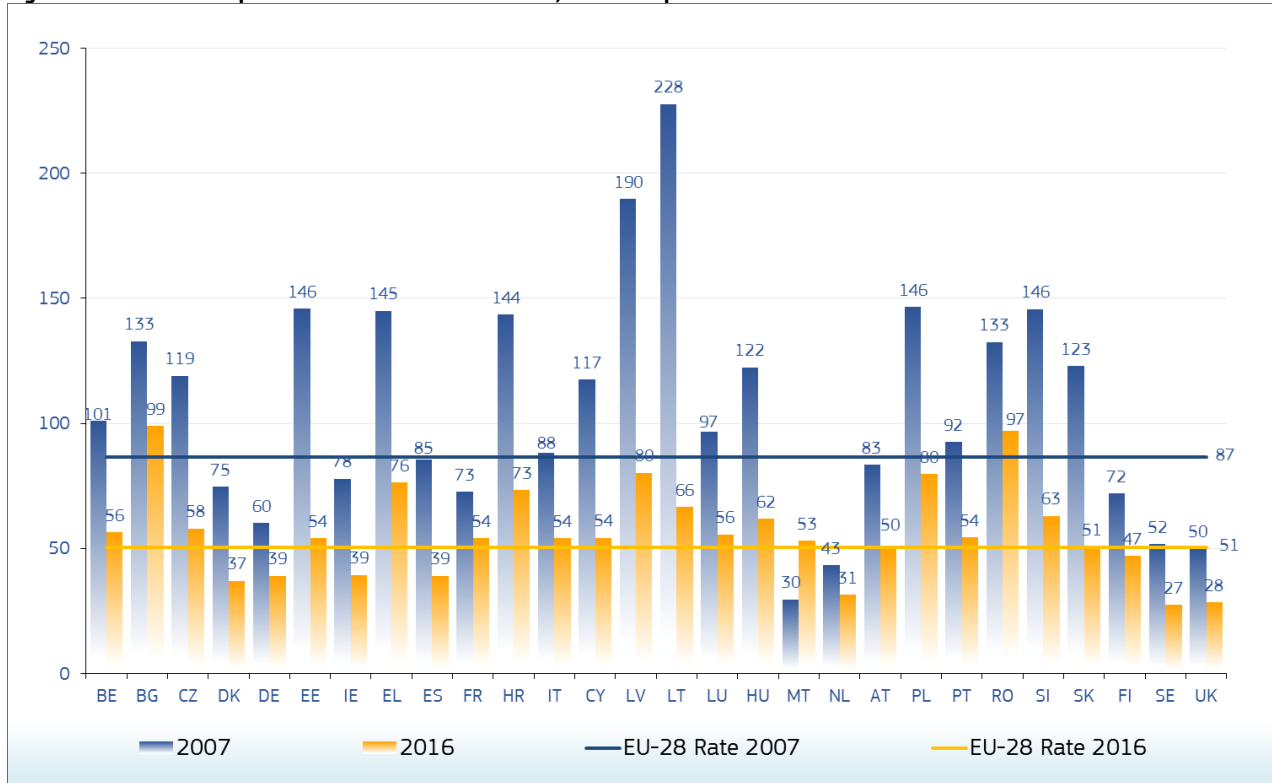
Figure 1: Annual number of fatalities, injury accidents and injured people in the EU, 2007-2016



Source: CARE (EU road accidents database) or national publications
 Last update: April 2018

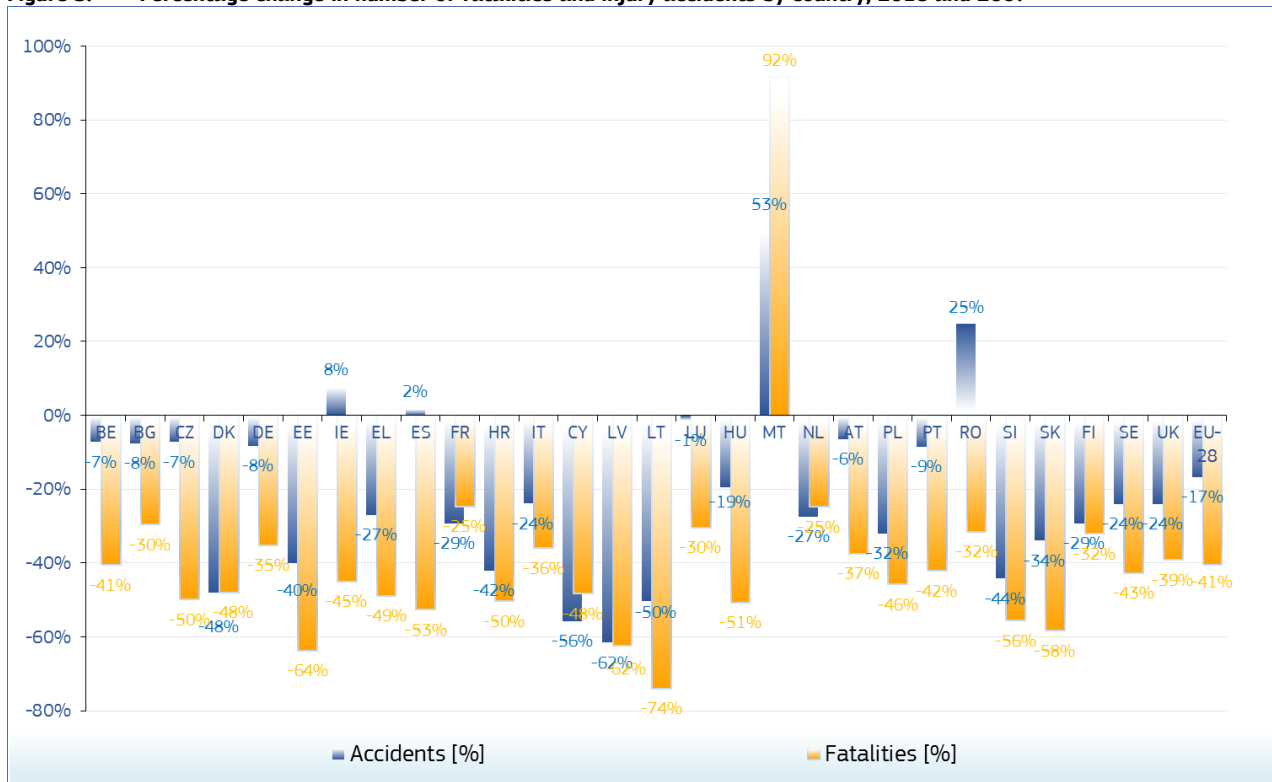
Annual Accident Report 2018

Figure 2: Fatalities per million inhabitants in the EU, 2016 compared to 2007



Source: CARE (EU road accidents database) or national publications
 Last update: April 2018

Figure 3: Percentage change in number of fatalities and injury accidents by country, 2016 and 2007



Source: CARE (EU road accidents database) or national publications
 Last update: April 2018

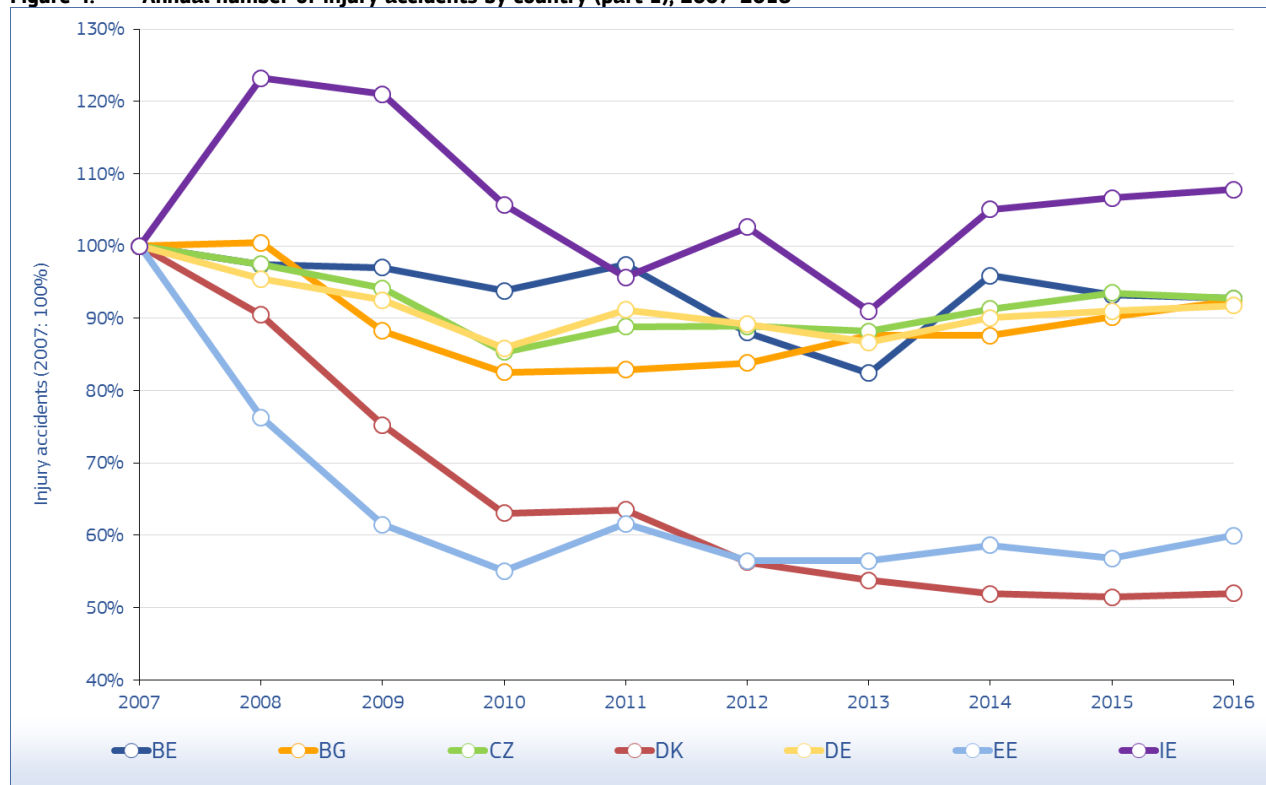
Table 1: Annual number of injury accidents by country, 2007-2016

	2007	2008	2009	2010	2011	2012	2013	2014	2015	2016
BE	43.239	42.115	41.944	40.569	42.119	38.057	35.632	41.481	40.303	40.096
BG	8.010	8.047	7.068	6.610	6.638	6.716	7.016	7.019	7.226	7.404
CZ	23.060	22.481	21.706	19.675	20.486	20.503	20.342	21.054	21.561	21.386
DK	5.549	5.020	4.174	3.498	3.525	3.124	2.985	2.881	2.853	2.882
DE	335.845	320.614	310.667	288.297	306.266	299.637	291.105	302.435	305.659	308.145
EE	2.449	1.868	1.506	1.348	1.508	1.383	1.382	1.436	1.391	1.468
IE	5.467	6.736	6.615	5.779	5.230	5.610	4.976	5.743	5.831	5.893
EL	15.499	15.083	14.789	15.032	13.849	12.398	12.109	11.690	11.440	11.318
ES	100.508	93.161	88.251	85.503	83.027	83.115	89.519	91.570	97.756	102.362
FR	81.272	74.487	72.315	67.288	65.024	60.437	56.812	58.191	56.600	57.515
HR	18.033	16.290	15.731	13.274	13.229	11.774	11.228	10.323	11.038	10.457
IT	230.871	218.963	215.430	212.997	205.638	188.228	181.660	177.031	174.539	175.791
CY	1.468	1.392	1.197	1.198	1.058	919	774	758	660	650
LV	9.865	8.894	3.160	3.193	3.386	3.358	3.489	3.728	3.692	3.792
LT	6.448	4.796	3.827	3.530	3.266	3.392	3.391	3.256	3.031	3.201
LU	954	927	869	787	962	1.019	949	908	983	941
HU	20.634	19.174	17.863	16.308	15.827	15.174	15.691	15.847	16.333	16.627
MT	942	764	636	577	1.140	1.270	1.208	1.449	1.367	1.437
NL	25.819	23.708	19.378	10.778	5.134	4.968	9.522	13.358	18.523	18.749
AT	41.096	39.173	37.925	35.348	35.129	40.831	38.502	37.957	37.960	38.466
PL	49.536	49.054	44.195	38.832	40.069	37.046	35.847	34.970	32.967	33.664
PT	35.311	33.613	35.484	35.426	32.541	29.867	30.339	30.604	31.955	32.299
RO	24.661	29.307	28.612	25.995	26.647	26.928	24.827	25.355	28.944	30.751
SI	11.640	9.165	8.717	7.659	7.257	6.857	6.568	6.345	6.578	6.495
SK	8.483	8.416	8.415	6.131	5.775	5.370	5.113	2.149	5.502	5.602
FI	6.657	6.881	6.414	6.072	6.408	5.725	5.334	5.324	5.164	4.709
SE	18.548	18.462	18.027	16.627	16.274	16.636	14.942	13.091	14.829	14.086
UK	188.105	176.814	169.805	160.080	157.068	151.346	144.480	152.407	146.203	142.846
EU	1.319.969	1.255.405	1.204.720	1.128.411	1.124.480	1.081.688	1.055.742	1.078.360	1.090.888	1.099.032
Yearly Change		-4,9%	-4,0%	-6,3%	-0,3%	-3,8%	-2,4%	2,1%	1,2%	0,7%
IS	1.146	1.083	893	883	849	741	820	808	912	986
LI	420	402	358	366	327	405	468			
NO	8.182	7.716	6.912	6.419	5.956	5.922	5.127	4.931	4.492	4.195
CH	21.911	20.736	20.506	19.609	18.990	18.148	17.473	17.803	17.736	17.577

Source: CARE (EU road accidents database) or national publications
Last update: April 2018

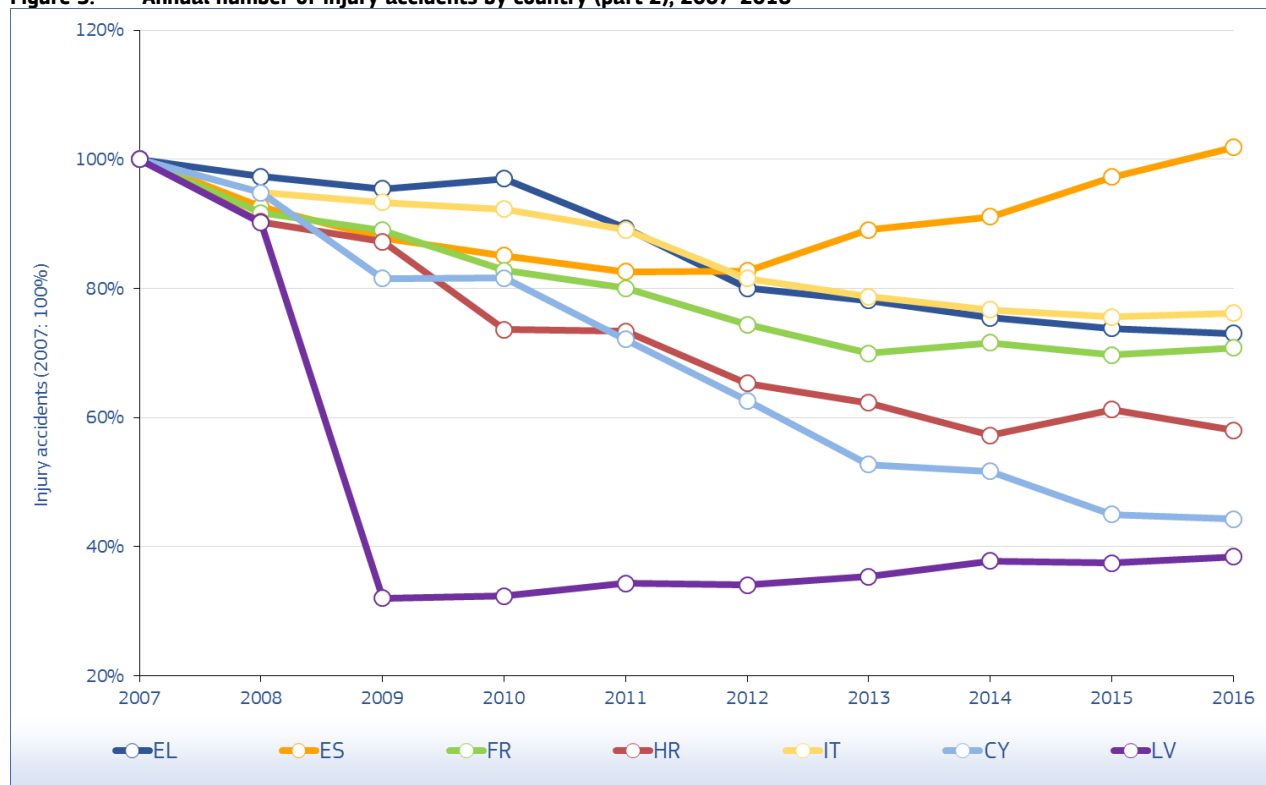
Annual Accident Report 2018

Figure 4: Annual number of injury accidents by country (part 1), 2007-2016



Source: CARE (EU road accidents database) or national publications
 Last update: April 2018

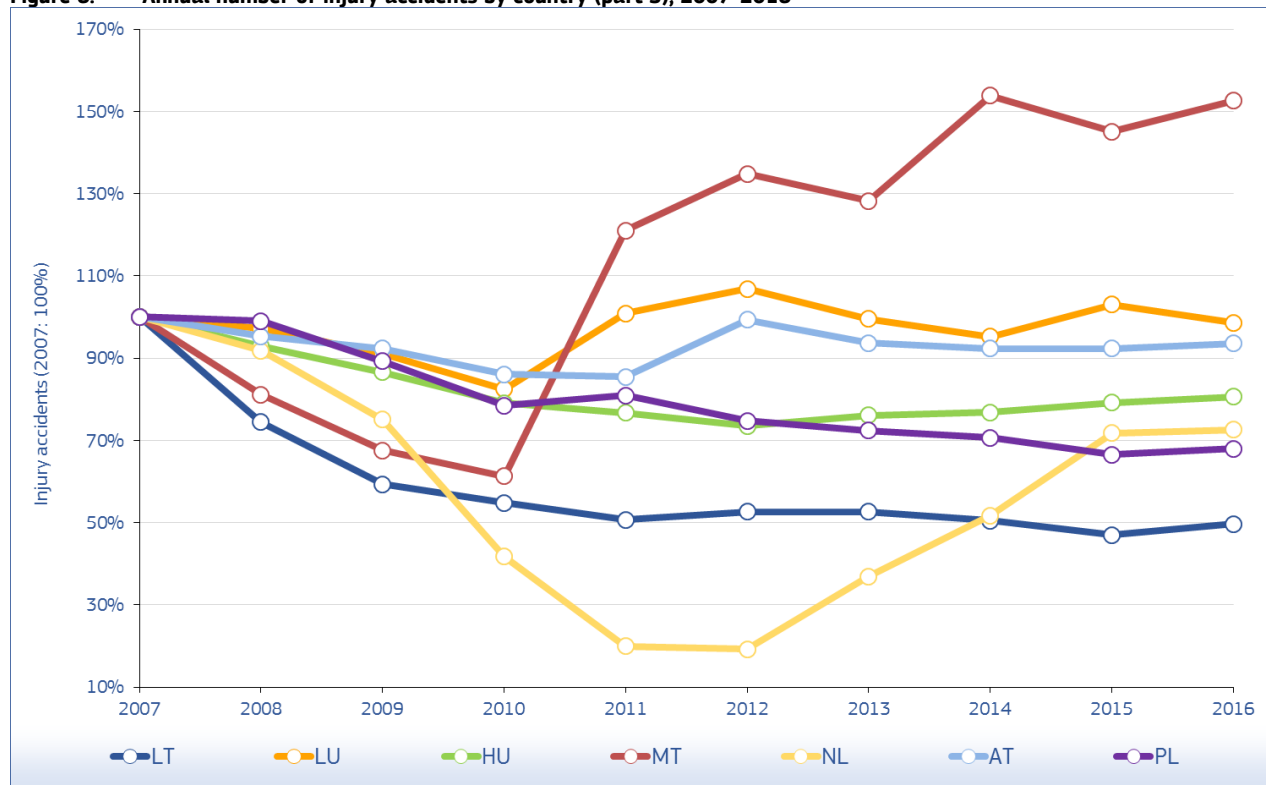
Figure 5: Annual number of injury accidents by country (part 2), 2007-2016



Source: CARE (EU road accidents database) or national publications
 Last update: April 2018

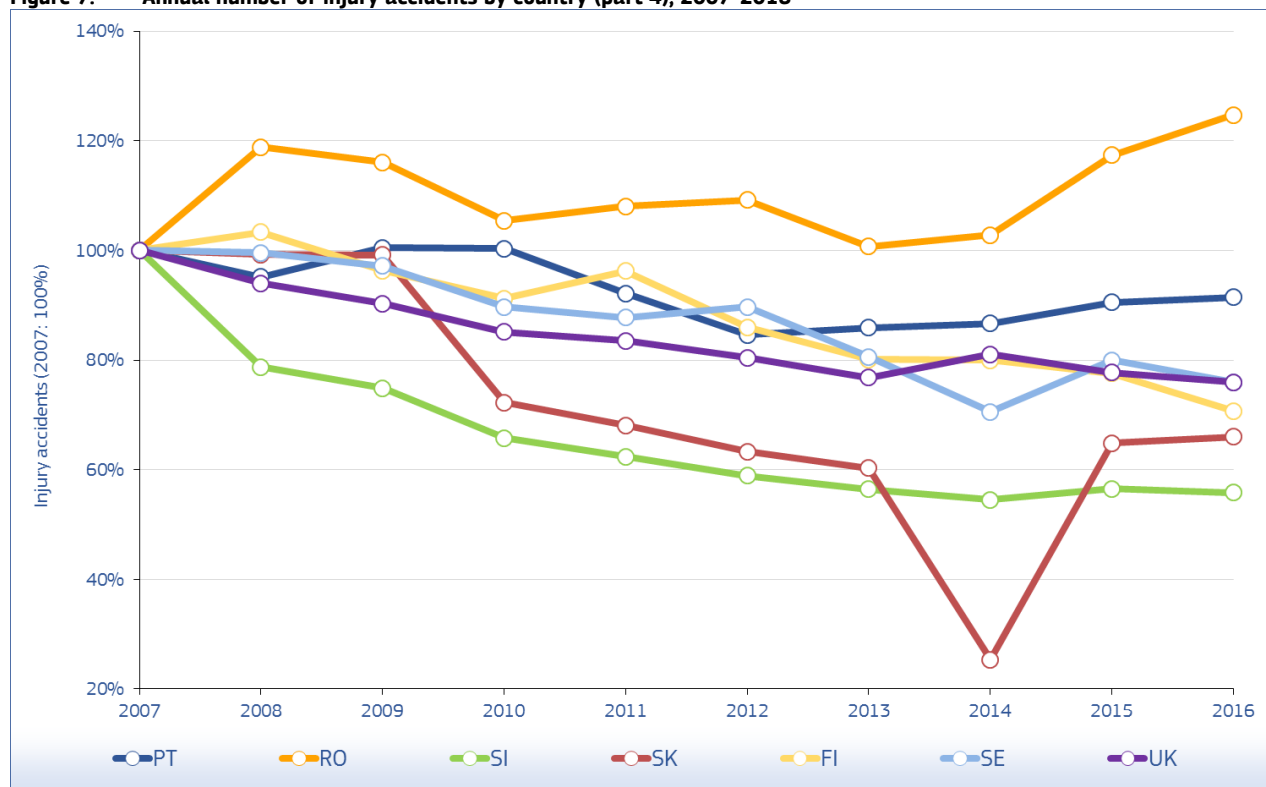
Annual Accident Report 2018

Figure 6: Annual number of injury accidents by country (part 3), 2007-2016



Source: CARE (EU road accidents database) or national publications
Last update: April 2018

Figure 7: Annual number of injury accidents by country (part 4), 2007-2016



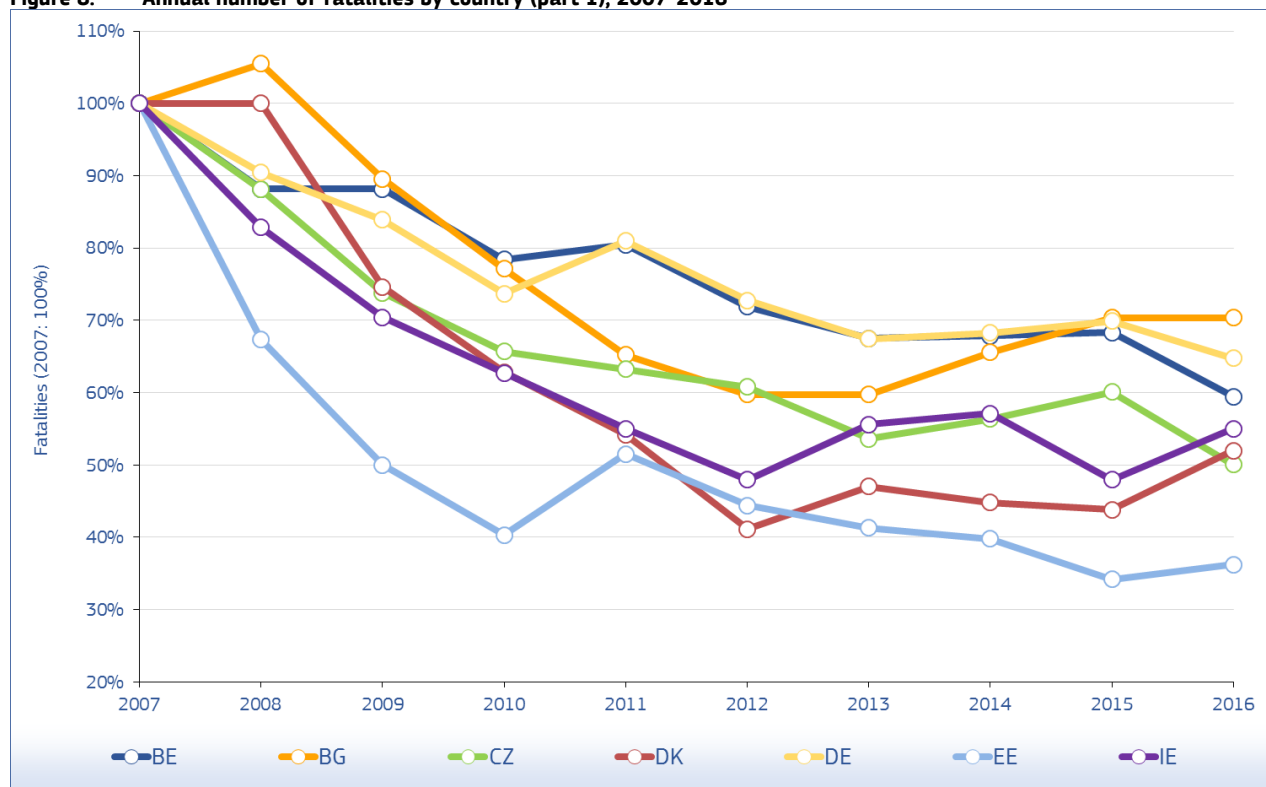
Source: CARE (EU road accidents database) or national publications
Last update: April 2018

Table 2: Annual number of fatalities by country, 2007-2016

	2007	2008	2009	2010	2011	2012	2013	2014	2015	2016
BE	1.071	944	944	840	862	770	723	727	732	637
BG	1.006	1.061	901	776	656	601	601	660	708	708
CZ	1.221	1.076	901	802	772	742	655	688	734	611
DK	406	406	303	255	220	167	191	182	178	211
DE	4.949	4.477	4.152	3.648	4.009	3.600	3.339	3.377	3.459	3.206
EE	196	132	98	79	101	87	81	78	67	71
IE	338	280	238	212	186	162	188	193	162	186
EL	1.612	1.555	1.456	1.258	1.141	988	879	795	793	824
ES	3.823	3.100	2.714	2.479	2.060	1.903	1.680	1.688	1.689	1.810
FR	4.620	4.275	4.273	3.992	3.963	3.653	3.268	3.384	3.461	3.477
HR	619	664	548	426	418	390	368	308	348	307
IT	5.131	4.725	4.237	4.114	3.860	3.753	3.401	3.381	3.428	3.283
CY	89	82	71	60	71	51	44	45	57	46
LV	419	316	254	218	179	177	179	212	188	158
LT	740	499	370	299	296	302	256	267	242	192
LU	46	35	48	32	33	34	45	35	36	32
HU	1.232	996	822	740	638	606	591	626	644	607
MT	12	9	15	13	16	9	17	10	11	23
NL	709	677	644	537	546	562	476	477	531	533
AT	691	679	633	552	523	531	455	430	479	432
PL	5.583	5.437	4.572	3.908	4.189	3.571	3.357	3.202	2.938	3.026
PT	974	885	840	937	891	718	637	638	593	563
RO	2.800	3.061	2.796	2.377	2.018	2.042	1.861	1.818	1.893	1.915
SI	293	214	171	138	141	130	125	108	120	130
SK	661	606	384	353	325	352	251	295	310	275
FI	380	344	279	272	292	255	258	229	266	258
SE	471	397	358	266	319	285	260	270	259	270
UK	3.059	2.645	2.337	1.905	1.960	1.802	1.770	1.854	1.804	1.860
EU	43.151	39.577	35.359	31.488	30.685	28.243	25.956	25.977	26.130	25.651
Yearly Change		-8,3%	-10,7%	-10,9%	-2,6%	-8,0%	-8,1%	0,1%	0,6%	-1,8%
IS	15	12	17	8	12	9	15	4	16	18
LI	0	1	1	0	2	1	2	-	-	-
NO	233	255	212	208	168	145	187	147	117	135
CH	384	357	349	327	320	339	269	243	253	216

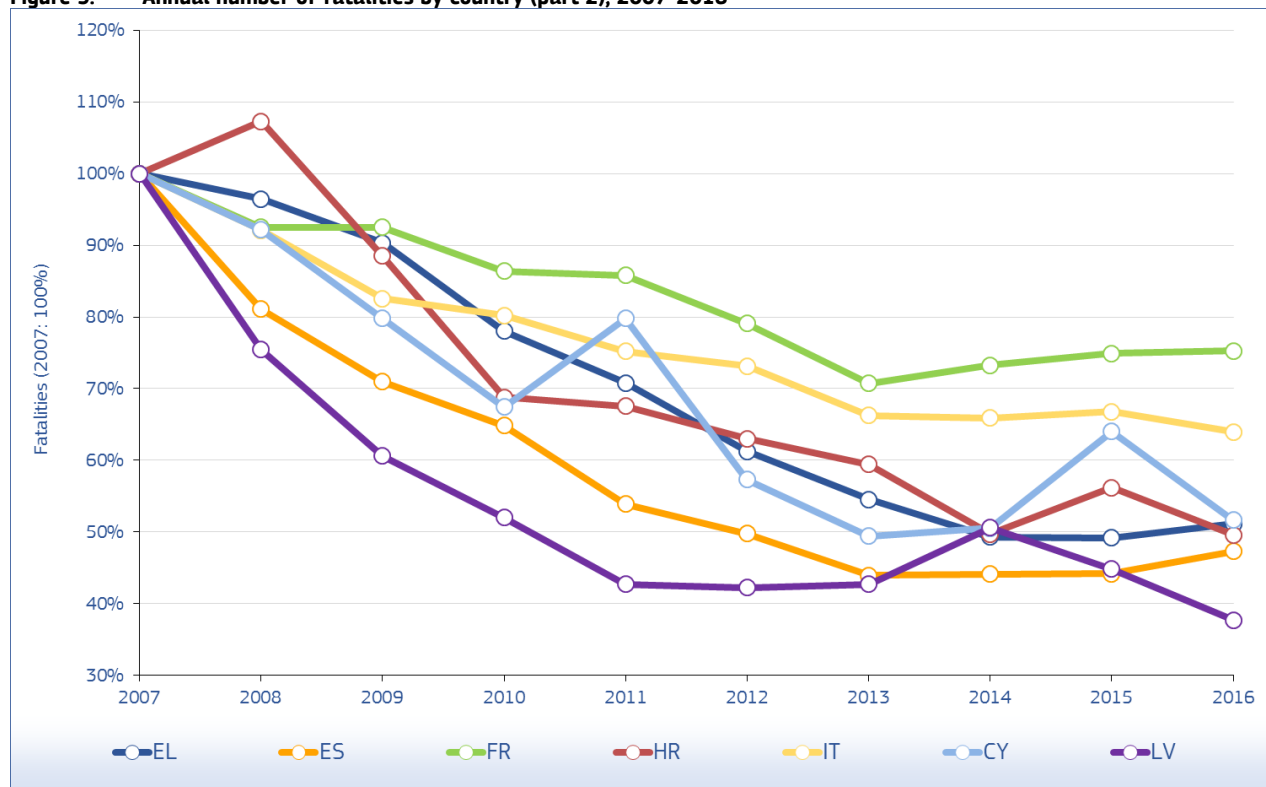
Source: CARE (EU road accidents database) or national publications
Last update: April 2018

Figure 8: Annual number of fatalities by country (part 1), 2007-2016



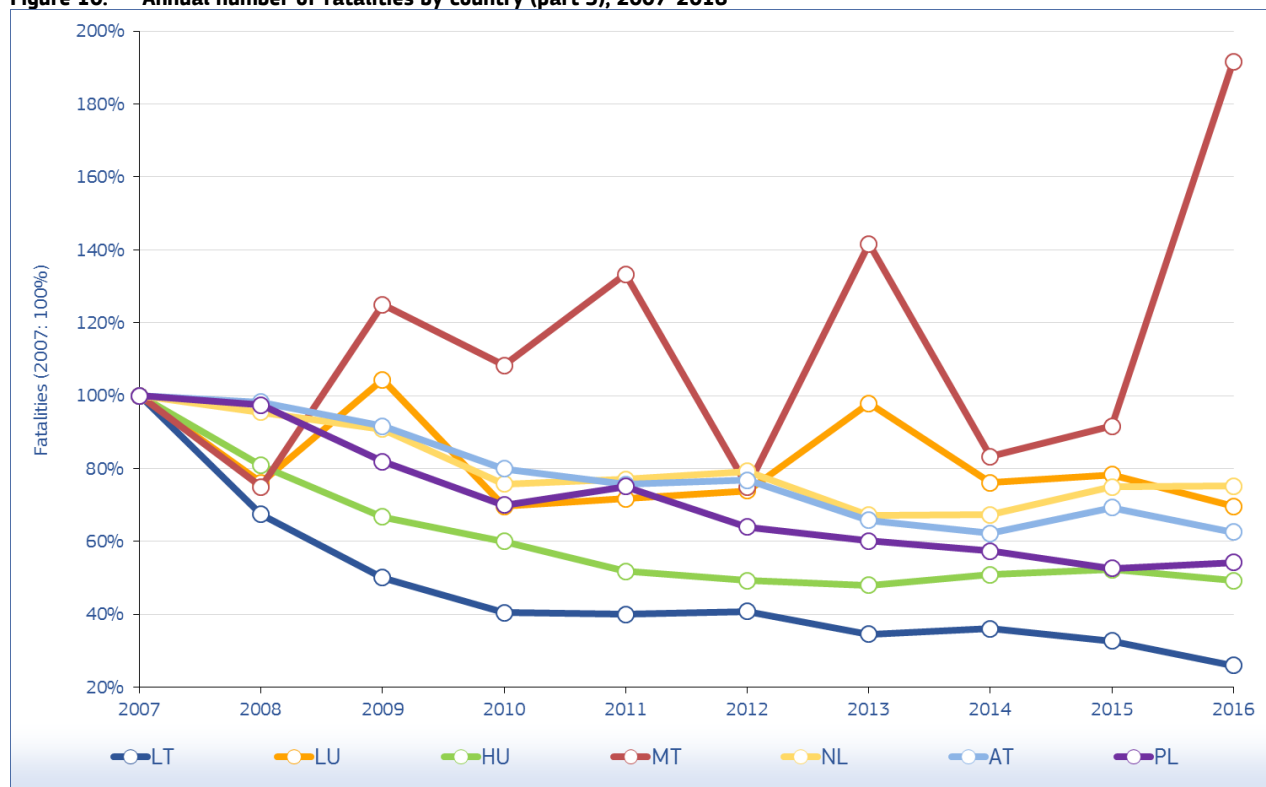
Source: CARE (EU road accidents database) or national publications
Last update: April 2018

Figure 9: Annual number of fatalities by country (part 2), 2007-2016



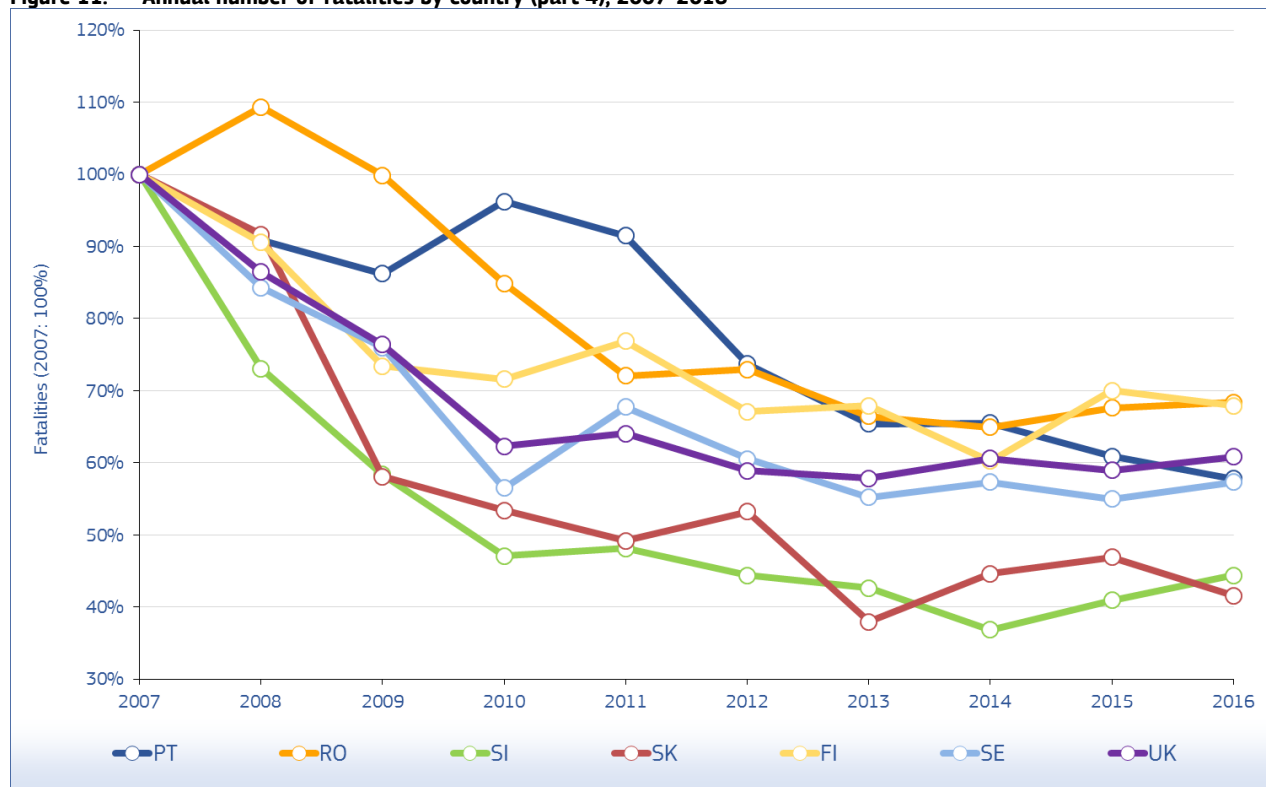
Source: CARE (EU road accidents database) or national publications
Last update: April 2018

Figure 10: Annual number of fatalities by country (part 3), 2007-2016



Source: CARE (EU road accidents database) or national publications
Last update: April 2018

Figure 11: Annual number of fatalities by country (part 4), 2007-2016



Source: CARE (EU road accidents database) or national publications
Last update: April 2018

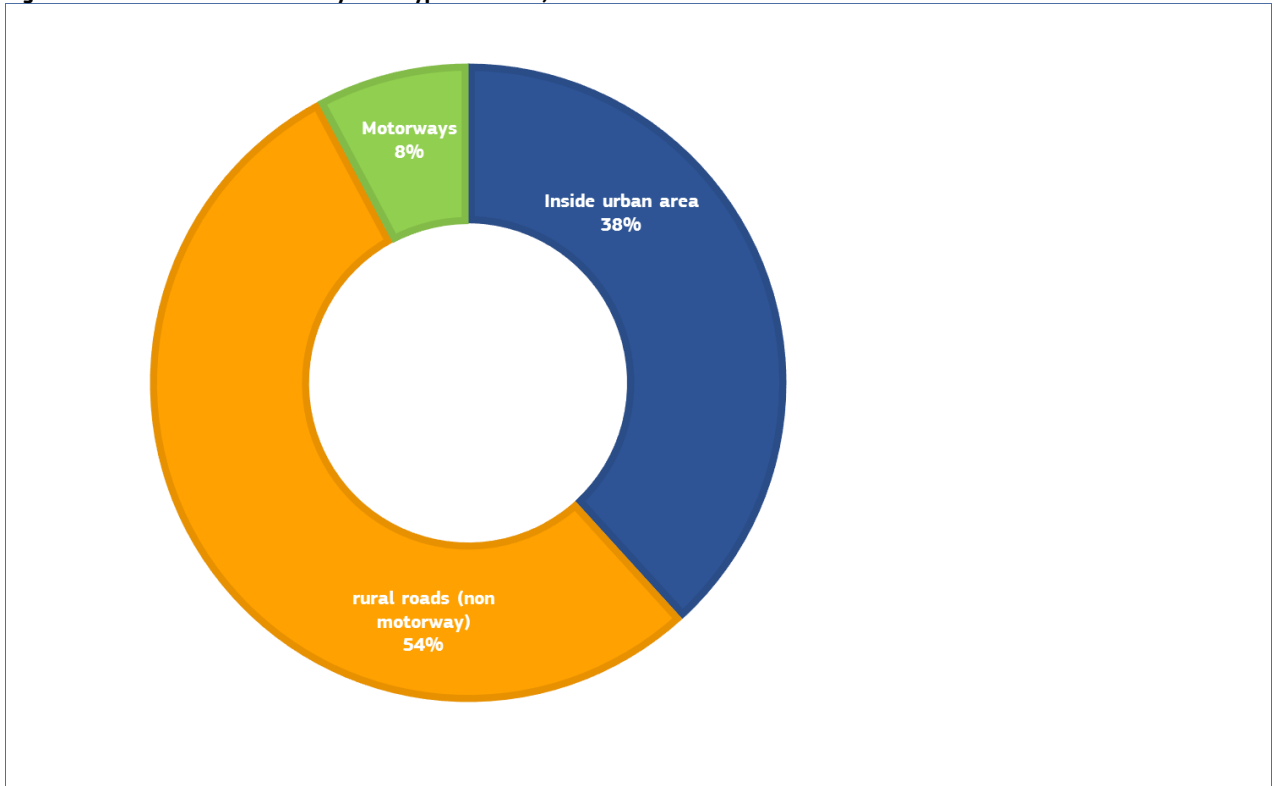
Table 3: Annual number of fatal accidents by country, 2007-2016

	2007	2008	2009	2010	2011	2012	2013	2014	2015	2016
BE	1.006	869	884	786	799	720	676	685	687	597
BG	-	937	748	659	558	527	520	572	612	-
CZ	1.111	983	846	742	713	687	606	623	668	560
DK	366	378	271	231	208	156	173	168	172	195
DE	4.609	4.117	3.867	3.387	3.724	3.375	3.131	3.187	3.277	3.016
EE	174	114	83	70	93	82	74	72	61	-
IE	309	254	220	185	172	152	179	179	-	-
EL	1.442	1.411	1.296	1.142	1.051	908	814	739	741	772
ES	2.957	2.384	2.117	1.953	1.816	1.709	1.488	1.512	1.559	1.663
FR	4.265	3.933	3.956	3.706	3.647	3.386	3.020	3.146	3.158	3.222
HR	548	585	493	402	385	355	328	284	317	279
IT	4.718	4.358	3.973	3.871	3.616	3.515	3.161	3.175	3.236	3.105
CY	88	79	64	56	67	51	41	44	56	45
LV	376	285	227	198	164	161	169	182	172	144
LT	-	-	-	-	-	-	230	243	223	-
LU	43	34	44	29	30	34	41	31	33	29
HU	1.107	891	752	649	563	541	540	573	585	565
MT	12	9	11	13	-	-	-	-	11	23
NL	669	630	597	500	520	532	456	455	505	506
AT	644	629	576	515	492	501	435	411	445	415
PL	5.028	4.862	4.144	3.504	3.775	3.246	3.062	2.954	2.687	2.757
PT	765	721	673	857	826	667	585	603	554	529
RO	2.462	2.655	2.464	2.103	1.818	1.833	1.657	1.621	1.685	1.713
SI	263	200	154	127	129	122	116	97	112	125
SK	599	555	336	345	-	-	-	-	-	-
FI	349	321	255	241	273	235	244	208	243	-
SE	426	355	336	249	292	258	247	254	240	243
UK	2.819	2.439	2.161	1.782	1.854	1.682	1.663	1.732	1.685	1.760
EU	38.322	35.218	31.778	28.532	28.173	26.023	24.014	24.106	24.248	23.926
Yearly Change		-8,1%	-9,8%	-10,2%	-1,3%	-7,6%	-7,7%	0,4%	0,6%	-1,3%
IS	15	12	15	7	12	9	14	3	16	18
LI	-	-	-	-	-	-	-	-	-	-
NO	209	237	186	190	158	139	170	135	102	128
CH	361	336	335	313	312	301	257	229	238	208

Source: CARE (EU road accidents database) or national publications
Last update: April 2018

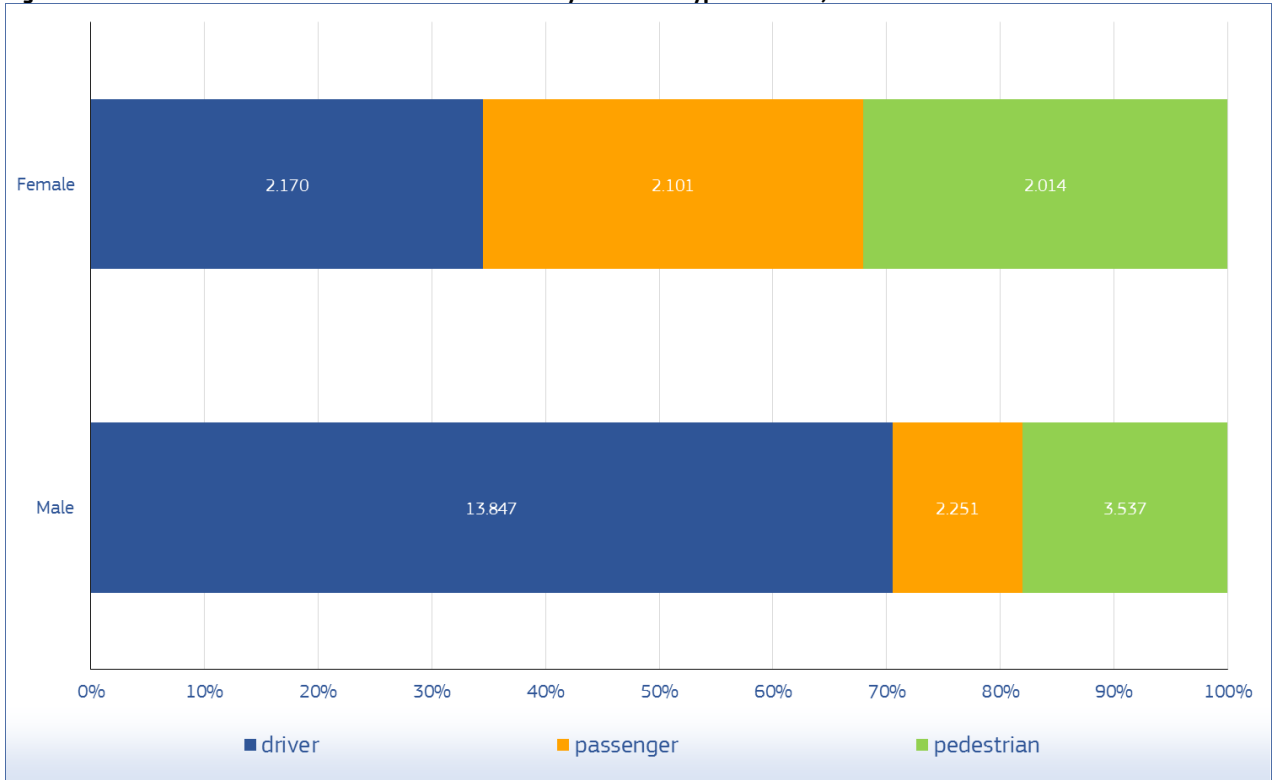
2.2 Interesting Details

Figure 12: Share of fatalities by area type in the EU, 2016



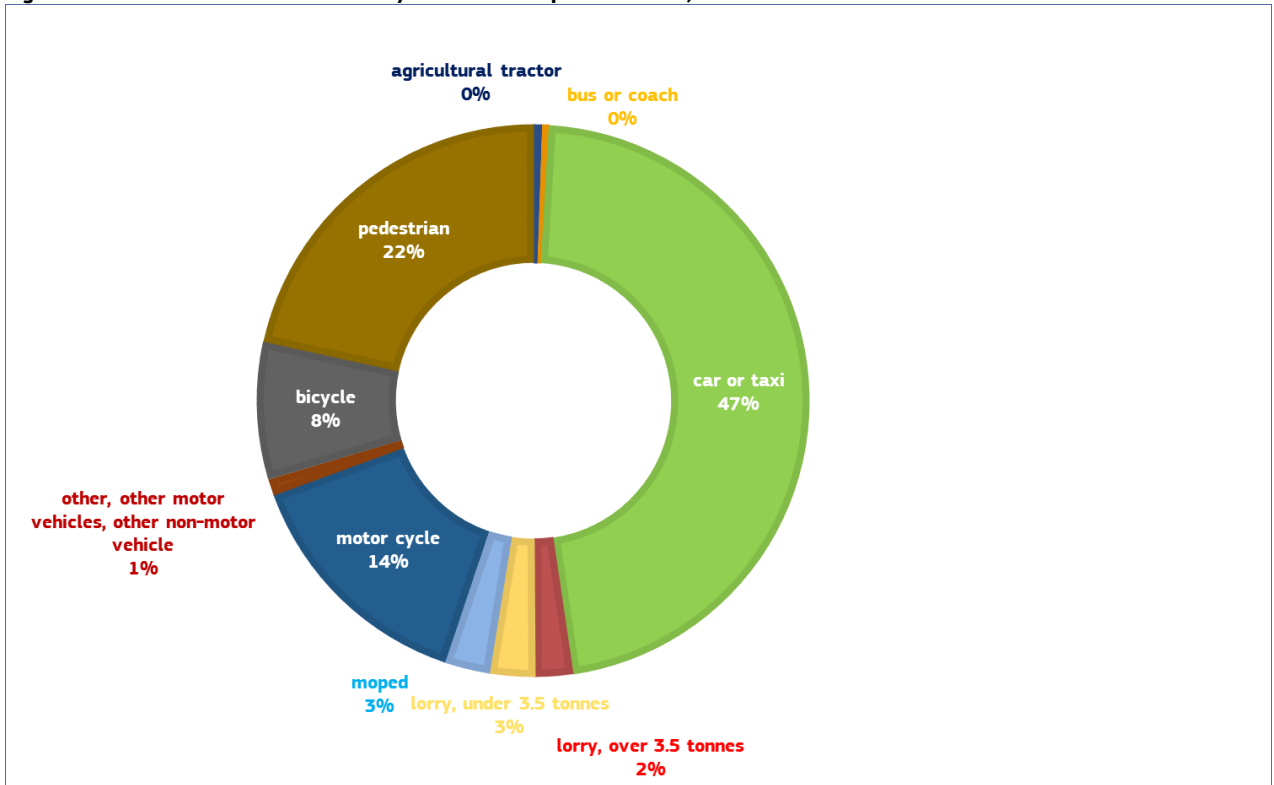
Source: CARE (EU road accidents database) or national publications
 Last update: April 2018

Figure 13: Distribution of male and female fatalities by road user type in the EU, 2016



Source: CARE (EU road accidents database) or national publications
 Last update: April 2018

Figure 14: Distribution of fatalities by mode of transport in the EU, 2016

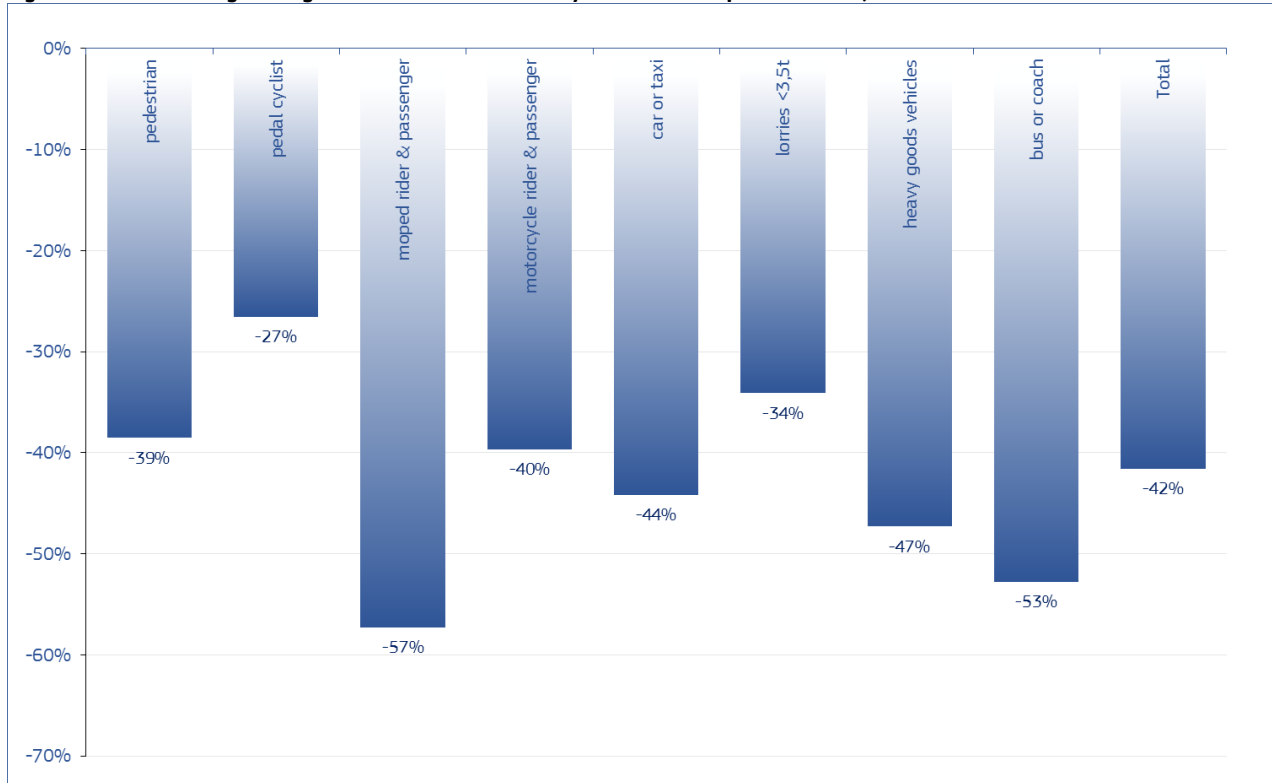


Source: CARE (EU road accidents database) or national publications
Last update: April 2018

3 Time Series – last 10 years in detail

3.1 Time series related to mode of transport

Figure 15: Percentage change in number of fatalities by mode of transport in the EU, 2016 and 2007



Source: CARE (EU road accidents database) or national publications
 Last update: April 2018

Annual Accident Report 2018

Table 4: Annual number of pedestrian fatalities by country, 2007-2016

	2007	2008	2009	2010	2011	2012	2013	2014	2015	2016
BE	104	99	101	106	113	104	99	106	92	78
BG	-	278	198	174	149	135	108	156	164	-
CZ	232	238	176	168	176	163	162	130	150	130
DK	68	58	52	44	33	31	34	22	27	36
DE	695	653	591	476	614	527	561	527	545	500
EE	38	41	23	14	26	29	23	26	24	-
IE	81	49	40	44	47	29	31	42	-	-
EL	255	248	202	179	223	170	151	125	128	149
ES	591	502	470	471	380	370	371	336	367	389
FR	561	548	496	485	519	489	465	499	466	553
HR	124	136	103	105	71	72	69	73	61	67
IT	627	646	667	621	589	576	551	578	602	570
CY	17	16	9	13	13	10	8	10	16	14
LV	158	105	82	79	60	62	70	71	63	55
LT	-	-	-	-	-	-	96	109	81	-
LU	7	6	12	1	6	6	5	3	7	8
HU	288	251	186	192	124	156	147	152	149	152
MT	3	1	1	-	-	-	-	-	5	8
NL	86	56	63	62	65	64	51	50	60	44
AT	108	102	101	98	87	81	82	71	84	73
PL	1.951	1.882	1.467	1.236	1.408	1.157	1.140	1.116	915	868
PT	156	155	148	195	199	159	144	145	146	123
RO	1.113	1.067	1.015	868	747	728	726	697	649	717
SI	32	39	24	26	21	19	20	14	16	22
SK	217	204	113	126	-	-	-	-	-	-
FI	48	53	30	35	41	29	34	36	32	29
SE	58	45	44	31	53	50	42	52	28	42
UK	663	591	524	415	466	429	405	464	427	463
EU	8.655	8.165	7.034	6.361	6.453	5.868	5.722	5.737	5.472	5.527
Yearly Change		-5,7%	-13,9%	-9,6%	1,4%	-9,1%	-2,5%	0,3%	-4,6%	1,0%
IS	1	0	2	2	4	2	1	0	1	2
LI	-	-	-	-	-	-	-	-	-	-
NO	23	31	26	24	16	22	18	18	12	15
CH	79	59	60	75	69	75	69	43	58	50

Source: CARE (EU road accidents database) or national publications
Last update: April 2018

Annual Accident Report 2018

Table 5: Annual number of pedal cyclist rider and passenger fatalities by country, 2007-2016

	2007	2008	2009	2010	2011	2012	2013	2014	2015	2016
BE	90	86	89	70	70	69	73	76	83	71
BG	-	35	29	27	17	32	31	29	29	-
CZ	116	93	84	80	63	78	74	68	84	53
DK	54	54	25	26	30	22	33	30	26	31
DE	425	456	462	381	399	406	354	396	383	393
EE	13	9	7	0	0	0	0	0	0	-
IE	15	13	7	5	9	8	5	13	-	-
EL	16	22	15	23	13	21	15	19	11	18
ES	90	59	57	67	48	74	70	75	58	67
FR	142	148	162	147	141	164	147	159	149	162
HR	28	47	29	28	28	21	23	19	34	27
IT	352	288	295	265	282	292	251	273	251	275
CY	3	6	2	2	2	1	2	1	1	0
LV	18	15	26	13	15	18	13	16	9	7
LT	-	-	-	-	-	-	18	19	22	-
LU	0	0	2	1	2	0	0	0	0	1
HU	158	109	103	92	85	84	68	98	83	73
MT	0	0	-	-	-	-	-	-	0	1
NL	147	145	138	119	144	145	112	118	107	101
AT	37	62	39	32	42	52	52	45	39	48
PL	498	433	371	280	314	300	306	286	300	271
PT	34	42	29	33	45	32	29	35	25	33
RO	179	179	157	182	140	154	161	151	162	176
SI	17	17	18	17	16	12	16	13	14	12
SK	61	46	22	27	-	-	-	-	-	-
FI	22	18	20	26	19	19	20	27	30	26
SE	33	30	20	21	21	28	14	33	17	22
UK	138	117	104	111	109	120	113	116	100	105
EU	2.739	2.547	2.329	2.093	2.099	2.197	2.027	2.142	2.057	2.064
Yearly Change		-7,0%	-8,6%	-10,1%	0,3%	4,6%	-7,7%	5,7%	-4,0%	0,3%
IS	0	0	0	0	0	0	0	0	1	0
LI	-	-	-	-	-	-	-	-	-	-
NO	7	10	9	5	12	12	10	12	5	12
CH	30	27	54	34	39	36	21	34	39	33

Source: CARE (EU road accidents database) or national publications

Last update: April 2018

Annual Accident Report 2018

Table 6: Annual number of moped rider and passenger fatalities by country, 2007-2016

	2007	2008	2009	2010	2011	2012	2013	2014	2015	2016
BE	26	32	25	22	20	15	13	17	19	16
BG	-	9	5	5	10	4	6	8	11	-
CZ	3	2	9	7	7	7	6	8	6	1
DK	48	30	15	11	14	14	11	13	19	8
DE	100	110	99	74	70	93	73	87	62	68
EE	4	6	3	0	-	1	0	0	0	-
IE	-	-	-	-	-	-	-	-	-	-
EL	43	41	28	36	34	35	25	20	32	25
ES	233	181	156	99	73	67	56	54	56	54
FR	324	291	299	248	220	179	159	165	155	121
HR	20	27	15	15	10	16	14	11	14	10
IT	358	292	212	206	165	127	125	112	105	116
CY	8	8	4	3	3	3	0	4	2	2
LV	4	4	1	4	5	3	3	6	6	6
LT	-	-	-	-	-	-	4	1	3	-
LU	1	0	0	0	0	0	0	0	0	0
HU	31	26	23	19	31	25	24	17	27	16
MT	-	-	-	-	-	-	-	-	0	0
NL	60	51	47	32	36	40	41	32	35	34
AT	24	25	30	18	18	19	15	16	8	8
PL	59	87	68	83	87	82	62	71	65	77
PT	71	71	58	77	71	57	51	43	42	44
RO	81	150	122	114	87	99	39	30	34	33
SI	12	8	3	7	2	3	4	2	1	3
SK	-	-	-	-	-	-	-	-	-	-
FI	11	13	11	9	10	7	5	3	2	5
SE	14	11	11	8	11	8	3	8	5	8
UK	18	21	16	10	10	12	4	6	8	8
EU	1.565	1.500	1.264	1.111	998	920	743	734	717	677
Yearly Change		-4,2%	-15,7%	-12,1%	-10,2%	-7,9%	-19,2%	-1,2%	-2,3%	-5,6%
IS	0	0	0	0	1	0	0	0	0	0
LI	-	-	-	-	-	-	-	-	-	-
NO	7	5	2	0	4	4	3	2	1	1
CH	7	9	8	4	4	3	8	1	3	6

Source: CARE (EU road accidents database) or national publications
Last update: April 2018

Annual Accident Report 2018

Table 7: Annual number of motorcycle rider and passenger fatalities by country, 2007-2016

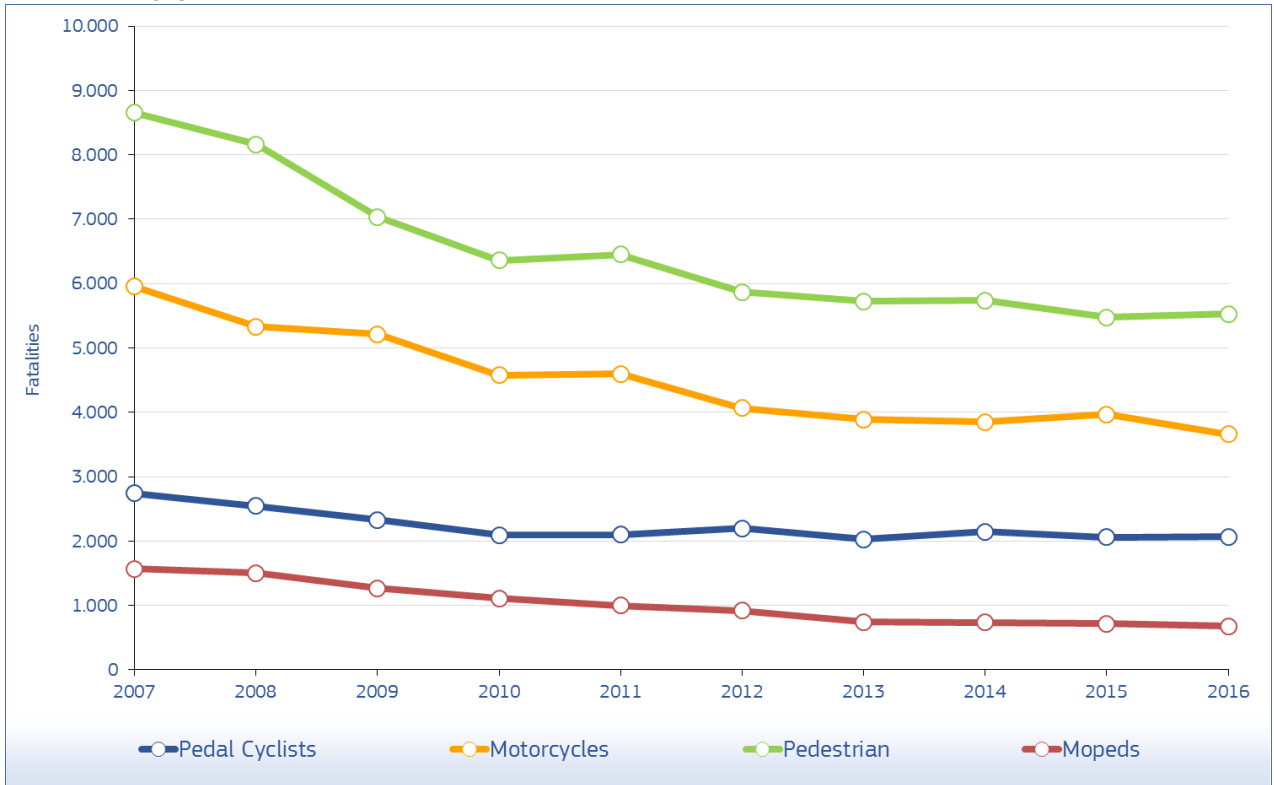
	2007	2008	2009	2010	2011	2012	2013	2014	2015	2016
BE	139	108	137	102	127	87	102	85	100	77
BG	-	67	48	42	35	48	49	47	50	-
CZ	136	121	85	92	77	86	66	88	91	62
DK	36	40	27	22	23	10	15	18	19	26
DE	807	656	650	635	708	586	568	587	639	536
EE	10	1	2	0	0	0	0	0	0	-
IE	33	29	25	17	18	19	26	24	-	-
EL	420	394	405	367	305	282	271	278	237	240
ES	640	484	437	386	348	304	302	287	329	343
FR	853	817	908	734	786	692	658	649	614	613
HR	96	100	81	51	76	62	49	44	58	38
IT	1.182	1.085	1.037	950	923	847	728	704	773	657
CY	16	16	19	18	13	11	15	9	13	10
LV	10	14	10	17	6	7	10	10	7	12
LT	-	-	-	-	-	-	15	13	13	-
LU	5	9	7	1	3	5	8	8	6	3
HU	112	91	73	49	52	39	58	58	50	48
MT	4	3	2	3	3	-	-	-	2	9
NL	64	67	68	60	50	53	29	51	43	44
AT	96	91	87	68	67	68	87	76	83	85
PL	215	262	290	259	292	261	253	237	208	244
PT	145	116	115	126	116	104	78	91	73	59
RO	73	90	74	59	69	62	52	45	55	46
SI	41	40	28	17	25	18	17	15	25	22
SK	54	39	34	27	-	-	-	-	-	-
FI	32	36	27	18	29	21	24	17	20	17
SE	60	51	47	37	46	31	40	31	44	36
UK	596	488	472	403	359	320	337	347	361	316
EU	5.957	5.330	5.210	4.575	4.598	4.068	3.887	3.849	3.964	3.657
Yearly Change		-10,5%	-2,3%	-12,2%	0,5%	-11,5%	-4,5%	-1,0%	3,0%	-7,7%
IS	3	1	2	1	0	0	1	0	1	2
LI	-	-	-	-	-	-	-	-	-	-
NO	33	32	27	26	13	17	21	20	20	22
CH	82	83	78	68	68	74	55	53	66	43

Source: CARE (EU road accidents database) or national publications

Last update: April 2018

Annual Accident Report 2018

Figure 16: Annual number of fatalities by mode of transport (drivers and passengers, vulnerable modes) in the EU, 2007-2016



Source: CARE (EU road accidents database) or national publications
 Last update: April 2018

Annual Accident Report 2018

Table 8: Annual number of car and taxi driver and passenger fatalities by country, 2007-2016

	2007	2008	2009	2010	2011	2012	2013	2014	2015	2016
BE	550	479	464	443	457	383	340	379	361	327
BG	-	623	570	478	398	335	367	379	396	-
CZ	661	573	497	403	404	368	308	347	365	328
DK	168	196	164	135	106	81	79	89	74	96
DE	2.625	2.368	2.110	1.840	1.986	1.791	1.588	1.579	1.624	1.537
EE	122	69	54	44	56	42	41	33	35	-
IE	171	160	146	129	95	89	107	103	-	-
EL	771	708	680	545	474	383	347	289	314	340
ES	1.824	1.494	1.260	1.194	977	871	716	722	693	754
FR	2.466	2.205	2.162	2.117	2.062	1.881	1.615	1.664	1.796	1.760
HR	309	303	284	205	215	186	195	141	164	148
IT	2.320	2.115	1.793	1.832	1.673	1.695	1.491	1.497	1.476	1.477
CY	37	26	24	19	31	18	16	15	24	10
LV	203	167	116	91	78	72	71	91	85	71
LT	-	-	-	-	-	-	108	118	115	-
LU	27	20	26	27	21	22	30	24	16	19
HU	555	448	386	330	268	253	254	256	304	269
MT	4	4	12	9	-	-	-	-	4	5
NL	299	299	288	219	209	218	180	171	214	225
AT	378	367	325	291	289	282	194	191	241	191
PL	2.582	2.540	2.179	1.853	1.897	1.615	1.448	1.346	1.332	1.417
PT	417	358	301	367	331	255	214	223	214	225
RO	1.096	1.324	1.168	973	780	798	721	724	787	785
SI	126	82	59	44	46	53	40	41	38	45
SK	293	292	182	171	-	-	-	-	-	-
FI	241	202	165	159	172	147	152	121	156	150
SE	279	234	219	151	159	142	144	122	144	138
UK	1.489	1.312	1.123	859	911	829	815	835	798	853
EU	20.744	19.076	16.865	15.036	14.383	13.097	11.761	11.680	12.044	11.990
Yearly Change		-8,0%	-11,6%	-10,8%	-4,3%	-8,9%	-10,2%	-0,7%	3,1%	-0,4%
IS	11	10	9	4	7	6	11	3	12	13
LI	-	-	-	-	-	-	-	-	-	-
NO	138	151	127	127	102	73	105	72	67	67
CH	162	156	136	129	119	104	103	97	75	75

Source: CARE (EU road accidents database) or national publications
Last update: April 2018

Annual Accident Report 2018

Table 9: Annual number of heavy goods vehicles >3,5t fatalities by country, 2007-2016

	2007	2008	2009	2010	2011	2012	2013	2014	2015	2016
BE	25	25	20	13	15	17	13	14	16	23
BG	-	28	33	30	20	21	24	23	32	-
CZ	21	18	20	27	23	25	19	23	9	18
DK	4	2	3	2	1	0	1	1	2	3
DE	131	91	79	87	88	154	148	72	84	70
EE	3	3	6	1	0	1	2	3	0	-
IE	7	4	4	2	0	2	2	3	-	-
EL	14	19	7	14	10	11	7	12	11	6
ES	90	85	69	71	73	50	43	48	59	55
FR	68	76	54	65	67	56	57	56	56	55
HR	17	21	17	4	2	2	2	4	6	3
IT	203	219	173	53	50	46	43	46	44	83
CY	0	0	0	0	-	1	2	0	0	0
LV	12	3	6	0	2	4	3	5	5	3
LT	-	-	-	-	-	-	6	4	3	-
LU	4	0	0	1	0	0	2	0	1	0
HU	15	22	12	11	10	15	13	14	11	12
MT	0	1	0	0	0	0	0	0	0	0
NL	7	10	4	4	2	7	7	6	9	6
AT	11	3	9	7	6	4	6	9	8	13
PL	198	175	136	142	138	104	90	92	74	114
PT	25	17	29	12	14	16	18	8	10	7
RO	25	26	14	13	25	21	18	17	15	11
SI	4	0	0	1	1	0	1	1	1	3
SK	22	18	17	19	-	-	-	-	-	-
FI	7	5	6	9	5	10	6	4	4	5
SE	6	5	3	5	4	2	5	5	5	6
UK	54	24	15	30	29	30	22	14	33	17
EU	1.008	906	741	629	610	624	579	503	520	570
Yearly Change		-10,1%	-18,2%	-15,2%	-3,0%	2,4%	-7,2%	-13,1%	3,3%	9,6%
IS	0	1	1	1	0	0	0	0	0	1
LI	-	-	-	-	-	-	-	-	-	-
NO	5	9	9	8	8	2	11	7	4	5
CH	4	4	2	2	1	1	3	2	3	1

Source: CARE (EU road accidents database) or national publications
Last update: April 2018

Annual Accident Report 2018

Table 10: Annual number of lorries <3,5t fatalities by country, 2007-2016

	2007	2008	2009	2010	2011	2012	2013	2014	2015	2016
BE	49	40	43	35	29	29	34	27	37	37
BG	-	-	-	-	-	-	-	-	-	-
CZ	45	27	25	18	15	7	15	16	15	17
DK	24	22	16	14	10	6	17	9	9	6
DE	84	92	85	75	86	-	-	71	62	63
EE	0	0	0	0	-	-	-	-	-	-
IE	25	16	13	8	17	10	12	5	-	-
EL	56	62	75	62	51	51	38	35	44	31
ES	234	189	170	116	99	98	69	111	93	88
FR	131	134	144	146	134	145	132	142	120	130
HR	-	-	-	5	10	15	2	5	5	5
IT	-	-	-	141	117	118	102	109	118	58
CY	4	8	12	5	4	4	1	4	0	5
LV	1	2	5	0	2	4	5	6	3	2
LT	-	-	-	-	-	-	1	2	1	-
LU	-	-	-	-	1	1	0	0	6	1
HU	47	33	28	24	30	20	17	25	17	15
MT	0	0	0	0	-	-	-	-	0	0
NL	35	31	24	22	18	16	15	7	15	24
AT	15	19	13	10	5	15	15	10	12	10
PL	-	-	-	-	-	-	-	-	-	-
PT	70	88	68	88	76	48	61	49	46	41
RO	105	114	87	73	64	72	61	67	77	63
SI	3	3	6	2	1	5	5	0	0	0
SK	2	2	1	1	-	-	-	-	-	-
FI	12	9	10	9	9	11	9	10	13	14
SE	9	11	7	7	10	16	5	8	10	6
UK	63	47	40	37	35	34	39	34	34	51
EU	1.161	1.097	1.021	900	825	813	742	753	743	674
Yearly Change		-5,6%	-6,9%	-11,8%	-8,4%	-1,5%	-8,7%	1,6%	-1,4%	-9,3%
IS	0	0	1	0	0	1	1	1	0	0
LI	-	-	-	-	-	-	-	-	-	-
NO	10	7	5	9	5	9	9	1	4	1
CH	4	5	3	6	8	6	3	3	1	1

Source: CARE (EU road accidents database) or national publications
Last update: April 2018

Annual Accident Report 2018

Table 11: Annual number of buses or coaches fatalities by country, 2007-2016

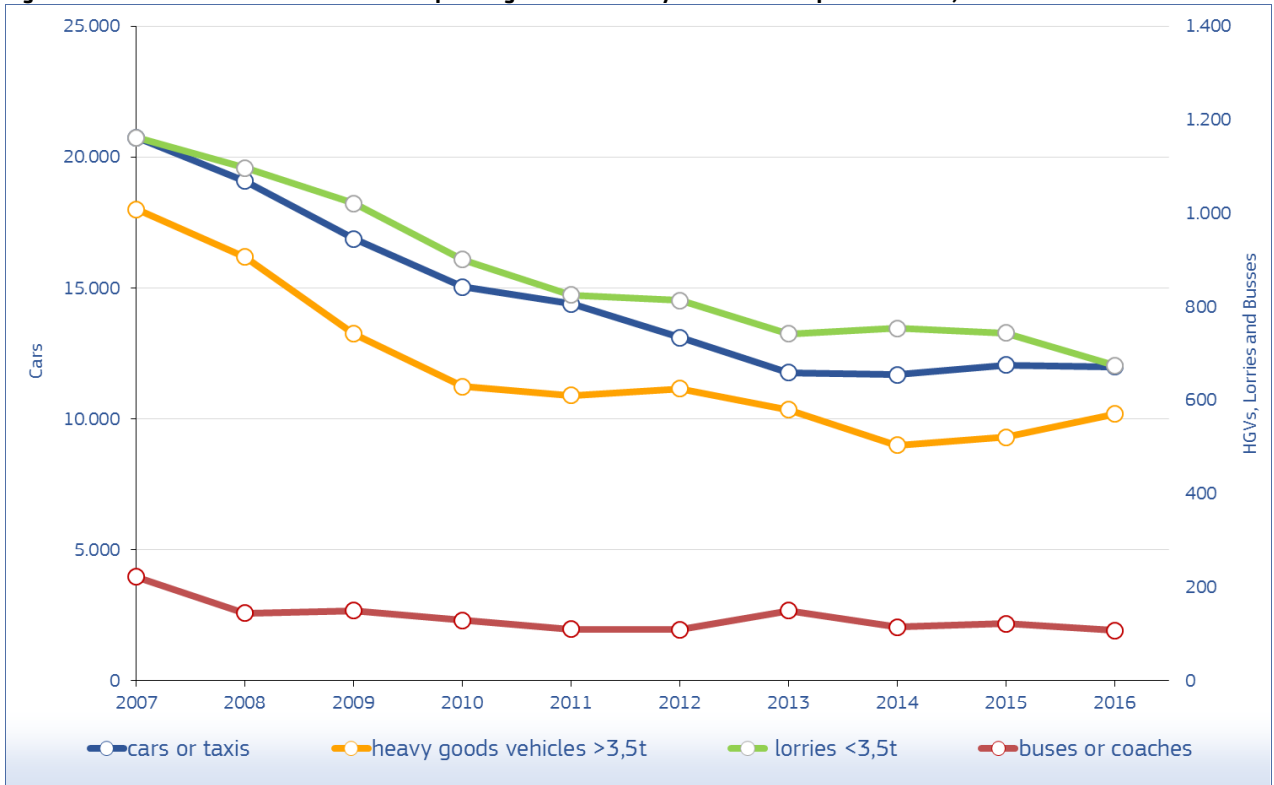
	2007	2008	2009	2010	2011	2012	2013	2014	2015	2016
BE	4	2	1	1	2	9	5	4	4	0
BG	-	5	5	3	11	2	1	4	3	-
CZ	2	0	3	1	4	2	2	3	1	0
DK	3	0	0	0	0	1	0	0	0	3
DE	24	10	11	32	10	3	11	13	5	4
EE	0	0	2	4	1	2	2	8	1	-
IE	1	0	1	1	0	1	0	0	-	-
EL	0	4	0	2	4	8	2	2	3	0
ES	15	28	21	5	4	3	11	26	2	21
FR	35	20	5	4	0	7	7	9	43	12
HR	6	17	0	0	0	8	1	0	1	2
IT	18	11	2	9	3	7	48	5	6	3
CY	0	0	0	0	0	0	0	0	0	1
LV	3	1	2	5	2	3	1	1	2	0
LT	-	-	-	-	-	-	1	0	1	-
LU	0	0	0	0	0	0	0	0	0	0
HU	14	3	3	12	30	3	6	1	1	10
MT	0	0	0	0	-	-	-	-	0	0
NL	1	3	0	1	0	1	0	1	1	0
AT	4	2	2	8	0	2	0	1	0	1
PL	17	11	19	14	12	18	18	12	14	8
PT	15	1	6	0	1	2	11	2	8	0
RO	26	6	36	10	9	10	8	9	18	23
SI	0	0	1	0	0	0	0	0	0	0
SK	8	4	12	0	-	-	-	-	-	-
FI	0	0	1	0	2	1	1	0	0	0
SE	6	1	0	2	2	2	1	2	0	1
UK	14	14	16	14	12	12	12	11	7	13
EU	222	144	149	129	110	108	149	114	121	107
Yearly Change		-35,0%	3,7%	-13,9%	-14,8%	-1,2%	38,0%	-23,7%	6,1%	-11,6%
IS	0	0	0	0	0	0	0	0	0	0
LI	-	-	-	-	-	-	-	-	-	-
NO	5	1	1	4	4	2	5	7	1	1
CH	0	4	0	4	3	32	0	2	1	1

Source: CARE (EU road accidents database) or national publications

Last update: April 2018

Annual Accident Report 2018

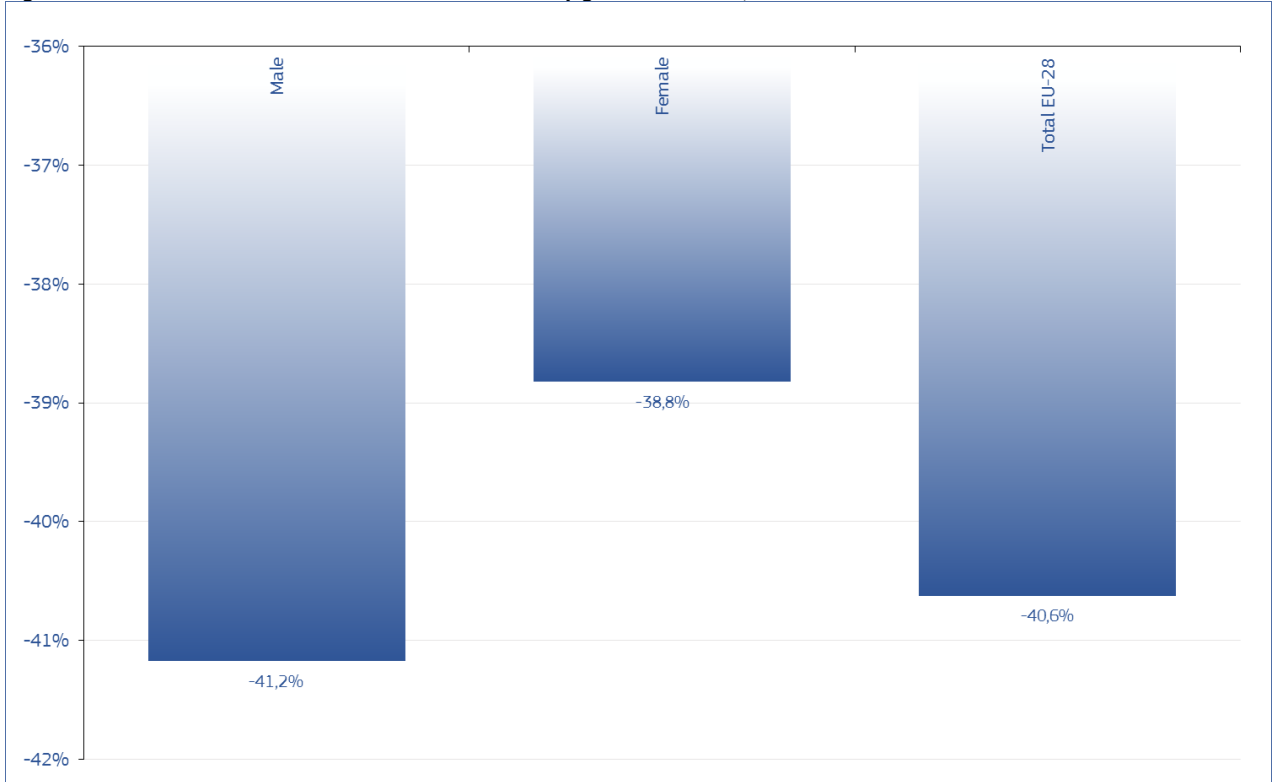
Figure 17: Annual number of drivers and passengers fatalities by mode of transport in the EU, 2007-2016



Source: CARE (EU road accidents database) or national publications
 Last update: April 2018

3.2 Time series related to age and gender

Figure 18: Increase/decrease of number of fatalities by gender in the EU, 2016 and 2007



Source: CARE (EU road accidents database) or national publications
Last update: April 2018

Annual Accident Report 2018

Table 12: Annual number of fatalities by age group by country, 2007-2008

	2007						2008					
	0-14	15-17	18-24	25-49	50-64	65+	0-14	15-17	18-24	25-49	50-64	65+
BE	30	27	215	464	159	170	35	28	177	411	139	149
BG	-	-	-	-	-	-	40	34	187	420	181	199
CZ	25	29	190	523	230	201	19	14	193	437	209	186
DK	20	18	58	145	69	95	19	14	69	146	61	97
DE	111	176	971	1.799	736	1.153	102	174	887	1.515	727	1.066
EE	6	8	41	70	27	41	3	4	28	40	28	29
IE	15	14	76	123	45	58	18	20	75	91	24	47
EL	42	43	280	685	207	330	35	41	246	658	221	329
ES	99	135	550	1.817	566	604	83	95	469	1.399	465	544
FR	150	166	984	1.789	627	896	114	136	956	1.624	622	823
HR	26	17	135	247	83	110	20	16	130	261	132	105
IT	95	190	723	2.187	681	1.105	85	163	634	1.937	660	1.099
CY	4	6	24	27	12	16	1	5	17	35	10	14
LV	11	15	44	169	90	73	12	12	48	126	63	46
LT	-	-	-	-	-	-	-	-	-	-	-	-
LU	2	2	8	22	4	7	0	0	8	16	5	4
HU	37	30	139	541	264	209	24	32	103	407	237	179
MT	0	0	4	5	0	3	0	0	2	5	0	2
NL	36	32	134	223	103	181	23	32	107	228	113	174
AT	13	32	135	254	112	145	12	26	134	220	115	172
PL	156	181	953	2.112	1.140	945	146	185	948	1.982	1.163	962
PT	27	11	148	385	171	225	23	11	113	363	174	197
RO	117	52	402	1.040	569	617	137	58	439	1.182	678	571
SI	6	6	64	126	40	51	4	10	38	87	41	34
SK	28	6	87	274	129	97	23	9	92	198	111	72
FI	14	18	75	118	76	79	8	26	50	111	56	93
SE	10	22	86	148	100	105	6	13	64	142	70	102
UK	96	192	639	1.142	407	575	110	160	542	989	344	499
EU	1.223	1.466	7.394	16.950	6.884	8.342	1.109	1.322	6.797	15.125	6.705	7.847
Yearly Change							-10,3%	-10,9%	-8,8%	-12,1%	-2,7%	-6,3%
IS	1	0	2	7	2	3	0	0	3	2	3	4
NO	10	10	33	89	40	51	8	11	59	84	44	48
CH	14	16	61	105	71	117	10	12	44	123	65	103

Source: CARE (EU road accidents database) or national publications
Last update: April 2018

Annual Accident Report 2018

Table 13: Annual number of fatalities by age group by country, 2009-2010

	2009						2010					
	0-14	15-17	18-24	25-49	50-64	65+	0-14	15-17	18-24	25-49	50-64	65+
BE	21	147	355	150	163	23	21	171	343	124	153	21
BG	33	157	368	155	158	19	20	116	322	147	147	33
CZ	13	133	405	166	167	17	17	125	329	142	172	13
DK	17	53	121	41	61	9	8	42	81	48	67	17
DE	133	796	1.351	678	1.104	104	101	690	1.218	624	910	133
EE	2	21	39	13	18	1	2	10	24	25	17	2
IE	9	64	96	31	26	6	7	56	83	26	30	9
EL	37	242	617	211	275	30	39	186	521	190	268	37
ES	70	357	1.273	412	507	79	49	311	1.087	407	527	70
FR	189	901	1.653	612	796	130	161	831	1.513	592	765	189
HR	18	102	187	101	116	12	9	58	170	80	97	18
IT	121	579	1.596	669	1.111	70	121	547	1.573	645	1.064	121
CY	2	19	29	3	14	1	2	12	27	7	11	2
LV	4	31	115	48	35	9	2	35	75	53	36	4
LT	-	-	-	-	-	-	-	-	-	-	-	-
LU	0	10	12	11	9	0	0	10	13	6	3	0
HU	16	81	353	184	166	20	10	73	304	184	137	16
MT	0	2	5	2	5	1	0	4	7	1	0	0
NL	26	126	191	91	187	16	20	90	171	86	154	26
AT	29	99	229	102	159	10	27	102	178	95	140	29
PL	120	833	1.668	970	810	112	122	677	1.419	871	674	120
PT	19	109	331	150	205	18	7	88	378	168	277	19
RO	58	416	1.000	597	593	95	50	307	849	577	494	58
SI	4	30	61	35	39	2	4	19	54	29	30	4
SK	5	53	122	80	51	11	7	59	126	67	48	5
FI	23	51	84	46	69	7	13	48	93	47	64	23
SE	25	60	100	72	92	9	5	47	82	52	71	25
UK	126	467	913	330	432	42	93	362	701	330	377	126
EU	1.125	5.981	13.368	6.017	7.420	860	921	5.117	11.836	5.679	6.785	1.125
Yearly Change	-17,5%	-13,6%	-13,1%	-11,4%	-5,7%	-10,8%	-22,2%	-16,9%	-13,0%	-5,9%	-9,4%	-17,5%
IS	1	1	8	4	3	0	0	3	1	2	2	1
NO	17	46	71	33	37	3	7	42	75	39	42	17
CH	5	68	97	68	90	8	12	36	105	65	101	5

Source: CARE (EU road accidents database) or national publications
Last update: April 2018

Annual Accident Report 2018

Table 14: Annual number of fatalities by age group by country, 2011-2012

	2011						2012					
	0-14	15-17	18-24	25-49	50-64	65+	0-14	15-17	18-24	25-49	50-64	65+
BE	35	14	143	353	127	183	16	18	128	279	151	177
BG	9	20	102	263	135	120	17	16	95	215	141	116
CZ	12	16	129	309	160	141	15	17	96	311	144	157
DK	9	8	35	63	42	63	7	6	31	51	28	44
DE	86	116	737	1.302	723	1.044	73	113	611	1.144	665	994
EE	4	0	15	40	23	19	0	1	17	26	25	18
IE	7	10	39	76	17	37	2	7	35	61	20	36
EL	22	28	163	458	185	260	21	21	143	389	147	248
ES	43	29	234	880	368	486	53	32	175	783	337	506
FR	128	144	813	1.517	602	759	115	131	753	1.345	564	745
HR	14	14	81	174	61	74	8	10	48	150	98	79
IT	61	105	496	1.417	667	1.038	52	85	423	1.400	656	1.068
CY	1	1	14	36	7	12	0	2	10	23	7	9
LV	5	4	20	70	32	43	6	5	16	67	40	34
LT	-	-	-	-	-	-	-	-	-	-	-	-
LU	1	2	8	12	7	3	1	2	6	14	2	9
HU	12	8	73	227	172	146	20	11	42	237	170	121
MT	-	-	-	-	-	-	-	-	-	-	-	-
NL	18	19	86	152	83	188	24	13	76	171	91	187
AT	13	24	76	164	96	150	8	24	84	156	105	154
PL	102	106	718	1.580	950	703	90	87	585	1.327	823	653
PT	19	11	105	303	189	264	14	10	65	274	155	195
RO	83	36	251	723	468	453	90	52	231	740	470	457
SI	6	4	17	62	29	23	3	2	19	46	34	26
SK	-	-	-	-	-	-	-	-	-	-	-	-
FI	8	14	51	92	45	82	7	14	41	84	51	58
SE	10	9	57	96	56	91	7	10	41	107	49	71
UK	52	77	341	746	305	439	56	66	344	631	283	422
EU	779	830	4.908	11.343	5.673	6.921	724	766	4.219	10.259	5.380	6.684
Yearly Change	-10,4%	-10,9%	-4,3%	-4,3%	-0,1%	2,0%	-7,6%	-8,3%	-16,3%	-10,6%	-5,4%	-3,5%
IS	2	4	0	2	2	2	0	0	2	2	1	4
NO	7	6	27	57	34	37	4	6	20	60	27	28
CH	10	9	41	80	62	118	31	6	39	92	78	93

Source: CARE (EU road accidents database) or national publications

Last update: April 2018

Annual Accident Report 2018

Table 15: Annual number of fatalities by age group by country, 2013-2014

	2013						2014					
	0-14	15-17	18-24	25-49	50-64	65+	0-14	15-17	18-24	25-49	50-64	65+
BE	18	8	119	318	108	151	10	22	117	255	137	178
BG	15	17	85	250	123	107	16	20	84	242	152	142
CZ	11	10	96	242	136	155	14	11	100	288	142	131
DK	13	6	25	56	38	53	6	3	22	61	32	58
DE	58	89	493	1.065	633	999	71	91	496	1.045	687	987
EE	3	2	8	32	17	19	1	2	13	27	19	16
IE	6	4	36	74	22	46	12	6	28	73	28	43
EL	17	27	112	319	149	234	10	19	114	300	160	187
ES	46	20	145	643	329	479	37	23	130	648	358	479
FR	97	102	636	1.213	532	688	112	116	582	1.255	547	772
HR	10	10	58	132	83	75	8	5	36	111	67	81
IT	55	69	404	1.171	614	1.011	62	70	369	1.129	645	1.056
CY	1	0	18	12	5	8	0	2	12	16	4	11
LV	7	1	14	75	32	40	7	3	30	80	37	42
LT	7	4	41	95	56	52	15	9	33	97	63	49
LU	2	0	5	19	10	9	1	0	5	18	9	2
HU	7	14	50	227	156	135	11	7	59	229	163	155
MT	-	-	-	-	-	-	-	-	-	-	-	-
NL	8	14	81	126	80	164	19	17	69	136	62	173
AT	10	14	56	148	85	142	8	16	59	130	102	115
PL	91	83	551	1.194	786	647	80	71	499	1.117	735	692
PT	11	8	65	215	142	193	8	11	53	215	144	206
RO	76	40	220	704	397	422	91	37	177	624	468	420
SI	3	2	22	43	28	27	2	1	9	51	19	26
SK	-	-	-	-	-	-	-	-	-	-	-	-
FI	6	12	36	79	52	73	10	12	32	78	41	56
SE	4	7	40	77	56	76	7	7	25	78	54	99
UK	41	48	348	642	282	409	50	38	335	662	295	474
EU	635	618	3.827	9.304	5.019	6.462	680	626	3.551	9.098	5.238	6.698
Yearly Change	-14,0%	-24,0%	-10,3%	-10,3%	-7,2%	-3,4%	6,7%	1,3%	-7,8%	-2,3%	4,2%	3,5%
IS	2	3	2	4	2	2	0	1	1	1	1	0
NO	4	6	29	60	44	44	4	4	18	48	25	47
CH	12	2	30	68	57	100	9	2	38	65	43	86

Source: CARE (EU road accidents database) or national publications

Last update: April 2018

Annual Accident Report 2018

Table 16: Annual number of fatalities by age group by country, 2015-2016

	2015						2016					
	0-14	15-17	18-24	25-49	50-64	65+	0-14	15-17	18-24	25-49	50-64	65+
BE	19	17	101	268	140	184	15	9	87	259	111	147
BG	20	12	97	278	148	147	20	12	97	278	148	147
CZ	18	4	103	281	149	178	14	9	65	224	138	160
DK	6	4	32	54	33	49	6	2	31	67	33	72
DE	84	72	473	1.068	736	1.024	66	83	435	889	681	1.049
EE	4	4	5	29	12	13	4	4	5	29	12	13
IE	-	-	-	-	-	-	-	-	-	-	-	-
EL	6	19	112	297	130	225	19	16	101	293	154	236
ES	25	27	144	659	320	505	28	23	176	669	393	515
FR	101	125	619	1.242	543	829	108	95	596	1.182	607	883
HR	14	7	45	140	79	63	4	4	42	97	77	83
IT	39	57	379	1.168	646	1.088	49	66	352	1.111	626	1.045
CY	1	1	11	24	4	16	1	6	5	12	8	14
LV	11	6	20	66	42	33	2	5	18	54	34	35
LT	5	6	29	87	46	66	-	-	-	-	-	-
LU	0	2	5	11	10	8	2	0	3	13	2	12
HU	11	9	61	271	145	144	10	8	47	226	156	159
MT	1	0	2	3	2	3	0	1	2	13	2	5
NL	20	15	70	142	108	176	12	9	75	138	100	198
AT	11	17	72	145	93	141	7	15	56	134	83	137
PL	70	67	446	1.044	690	619	72	74	440	1.144	639	656
PT	14	8	48	203	142	177	7	7	54	158	135	201
RO	76	40	207	703	409	450	74	51	195	637	438	509
SI	3	4	16	39	29	29	3	3	21	43	36	24
SK	-	-	-	-	-	-	-	-	-	-	-	-
FI	14	7	48	79	51	67	10	8	41	85	45	69
SE	7	9	35	83	55	70	6	6	31	78	60	89
UK	52	48	309	648	303	444	64	58	279	680	322	456
EU	655	600	3.576	9.231	5.160	6.839	631	593	3.370	8.799	5.181	7.071
Yearly Change	-3,8%	-4,4%	0,7%	1,4%	-1,5%	2,1%	-3,8%	-1,2%	-6,1%	-4,9%	0,4%	3,3%
IS	2	0	5	3	1	5	1	2	0	5	4	6
NO	2	2	31	36	22	24	2	3	20	40	37	32
CH	7	4	35	66	44	97	12	4	26	58	48	68

Source: CARE (EU road accidents database) or national publications
Last update: April 2018

Table 17: Annual number of female fatalities by country, 2007-2016

	2007	2008	2009	2010	2011	2012	2013	2014	2015	2016
BE	215	221	234	203	192	179	173	166	179	146
BG	-	231	201	-	-	-	-	-	-	-
CZ	275	259	225	177	187	167	150	164	154	146
DK	105	107	91	85	59	45	65	43	45	58
DE	1.309	1.229	1.102	997	1.038	950	905	867	910	864
EE	45	34	26	24	27	23	27	27	23	-
IE	85	75	56	46	56	54	46	58	-	-
EL	338	304	250	245	221	182	187	146	142	168
ES	823	676	621	556	465	449	392	398	395	410
FR	1.118	1.013	1.041	953	939	923	763	843	855	836
HR	-	157	141	102	84	69	84	64	74	64
IT	1.005	960	926	846	855	738	698	719	669	664
CY	14	17	12	10	13	14	9	13	21	10
LV	100	77	42	26	8	47	39	46	46	35
LT	-	-	-	-	-	-	61	75	74	-
LU	7	8	13	8	11	8	11	6	7	11
HU	314	237	207	181	169	163	159	167	173	145
MT	1	3	5	5	-	-	-	-	3	6
NL	192	179	175	145	162	146	131	134	131	148
AT	161	170	155	143	138	153	113	115	132	119
PL	1.333	1.321	1.109	913	938	845	792	771	707	757
PT	188	209	173	203	216	152	135	134	119	128
RO	740	765	694	575	473	500	487	457	463	508
SI	59	36	39	34	28	33	31	30	30	28
SK	156	111	88	92	-	-	-	-	-	-
FI	101	79	71	68	81	64	66	62	72	50
SE	127	111	92	67	78	67	65	79	58	65
UK	752	682	597	497	499	429	456	481	434	484
EU	9.781	9.100	8.246	7.262	7.095	6.558	6.142	6.162	6.066	6.097
Yearly Change		-7,0%	-9,4%	-11,9%	-2,3%	-7,6%	-6,3%	0,3%	-1,6%	0,5%
IS	2	2	3	4	4	2	8	2	4	5
NO	70	60	45	50	50	38	52	39	30	24
CH	82	90	80	83	80	90	78	56	65	65

Source: CARE (EU road accidents database) or national publications

Last update: April 2018

BG is not included in the EU totals due to missing gender data.

Annual Accident Report 2018

Table 18: Annual number of male fatalities by country, 2007-2016

	2007	2008	2009	2010	2011	2012	2013	2014	2015	2016
BE	850	717	705	629	659	589	549	557	550	481
BG	-	788	700	-	-	-	-	-	-	-
CZ	946	817	659	607	574	560	492	508	561	451
DK	300	299	212	170	161	122	126	139	133	153
DE	3.638	3.247	3.050	2.651	2.971	2.650	2.433	2.509	2.549	2.342
EE	147	97	71	55	74	64	54	51	44	-
IE	250	199	182	161	130	108	142	133	-	-
EL	1.268	1.244	1.201	1.013	920	806	692	649	651	656
ES	2.985	2.412	2.087	1.917	1.589	1.447	1.279	1.289	1.292	1.395
FR	3.502	3.262	3.232	3.039	3.024	2.730	2.505	2.541	2.604	2.635
HR	-	505	406	324	334	324	284	244	274	243
IT	4.126	3.765	3.311	3.268	3.005	3.015	2.703	2.662	2.759	2.619
CY	75	65	59	50	58	37	35	32	36	36
LV	317	239	166	121	109	128	137	166	142	123
LT	-	-	-	-	-	-	194	192	165	-
LU	38	27	35	24	22	26	34	29	29	21
HU	916	757	612	555	467	438	429	457	468	461
MT	11	6	10	8	-	-	-	-	8	17
NL	517	498	469	392	384	416	345	342	400	385
AT	530	509	478	409	385	378	342	315	347	313
PL	4.241	4.099	3.456	2.977	3.243	2.725	2.563	2.431	2.231	2.269
PT	779	674	666	734	675	564	501	503	473	435
RO	2.060	2.300	2.102	1.802	1.545	1.542	1.374	1.361	1.430	1.405
SI	232	178	132	104	113	97	94	78	90	102
SK	505	495	296	279	-	-	-	-	-	-
FI	279	265	208	204	211	191	192	167	194	208
SE	344	286	266	199	241	218	195	191	201	205
UK	2.307	1.962	1.740	1.408	1.461	1.373	1.314	1.373	1.370	1.376
EU	31.861	29.118	26.004	23.294	22.836	21.029	19.295	19.206	19.413	18.952
Yearly Change		-8,6%	-10,7%	-10,4%	-2,0%	-7,9%	-8,2%	-0,5%	1,1%	-2,4%
IS	13	10	14	4	8	7	7	2	12	13
NO	163	195	167	158	118	107	135	108	87	111
CH	302	267	269	244	240	249	191	187	188	151

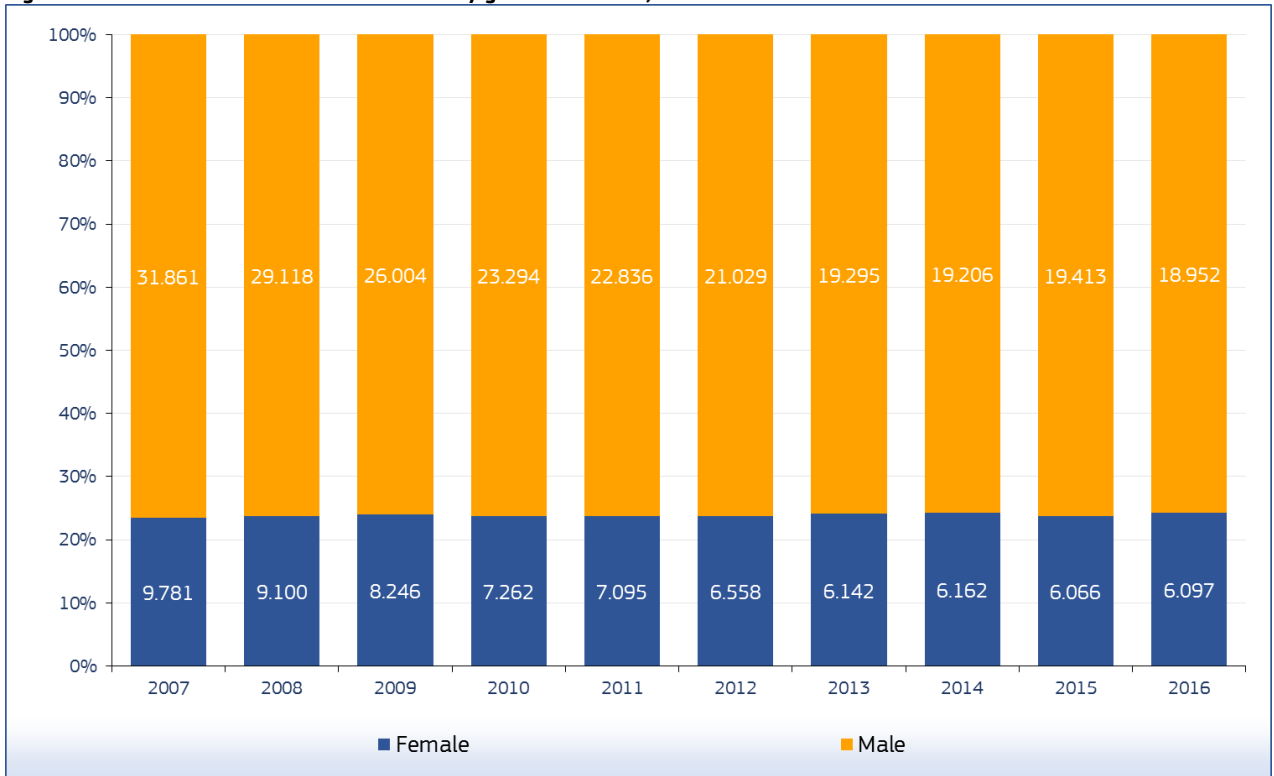
Source: CARE (EU road accidents database) or national publications

Last update: April 2018

BG is not included in the EU totals due to missing gender data.

Annual Accident Report 2018

Figure 19: Annual distribution of fatalities by gender in the EU, 2007-2016



Source: CARE (EU road accidents database) or national publications

Last update: April 2018

BG is not included in the EU totals due to missing gender data.

Table 19: Annual number of female fatalities as drivers by country, 2007-2016

	2007	2008	2009	2010	2011	2012	2013	2014	2015	2016
BE	120	105	113	111	88	95	74	80	95	70
BG	-	36	23	-	-	-	-	-	-	-
CZ	86	74	77	54	64	51	41	56	73	52
DK	56	58	45	43	32	23	27	18	19	30
DE	669	591	530	499	482	489	403	438	473	437
EE	11	11	5	9	2	6	7	8	5	-
IE	29	36	31	21	24	34	23	24	-	-
EL	64	64	44	60	52	33	44	35	31	39
ES	238	176	190	150	118	107	109	104	95	99
FR	507	451	473	435	423	433	337	383	365	376
HR	-	37	34	24	24	14	18	15	23	15
IT	353	337	313	306	317	273	258	244	246	239
CY	3	6	0	0	5	6	3	3	7	2
LV	14	15	14	7	0	13	8	9	7	4
LT	-	-	-	-	-	-	12	11	17	-
LU	4	6	3	4	4	1	7	3	3	3
HU	86	62	59	45	47	48	57	51	58	50
MT	0	2	0	1	-	-	-	-	1	2
NL	112	113	101	92	108	90	93	99	80	107
AT	69	81	63	58	60	76	49	61	65	57
PL	295	299	267	207	250	239	192	189	197	172
PT	46	63	46	46	52	34	35	37	32	31
RO	62	77	81	55	45	58	48	36	67	62
SI	24	13	10	16	11	16	16	12	11	13
SK	32	24	16	20	-	-	-	-	-	-
FI	46	46	30	31	32	29	31	32	36	26
SE	55	55	41	36	33	31	33	35	29	27
UK	269	260	220	204	204	153	182	192	154	168
EU	3.299	3.074	2.818	2.546	2.510	2.385	2.128	2.196	2.233	2.147
Yearly Change	0	-6,8%	-8,3%	-9,6%	-1,4%	-5,0%	-10,8%	3,2%	1,7%	-3,9%
IS	1	2	0	1	2	1	4	0	0	3
NO	34	26	14	21	25	25	26	21	14	13
CH	34	32	42	30	33	27	27	21	22	28

Source: CARE (EU road accidents database) or national publications

Last update: April 2018

BG is not included in the EU totals due to missing gender data.

Annual Accident Report 2018

Table 20: Annual number of male fatalities as drivers by country, 2007-2016

	2007	2008	2009	2010	2011	2012	2013	2014	2015	2016
BE	711	586	588	484	533	466	442	430	444	393
BG	-	421	413	-	-	-	-	-	-	-
CZ	666	555	466	440	388	402	345	392	385	317
DK	224	230	153	116	119	91	94	111	108	119
DE	2.848	2.527	2.408	2.085	2.344	2.108	1.906	1.983	2.011	1.853
EE	93	48	44	40	50	33	38	33	23	-
IE	155	134	125	91	81	67	101	87	-	-
EL	945	956	919	778	661	618	538	505	514	509
ES	2.180	1.750	1.500	1.360	1.170	1.056	906	939	953	1.001
FR	2.732	2.526	2.566	2.400	2.340	2.090	1.942	1.981	2.006	1.998
HR	-	335	270	209	245	237	197	170	202	171
IT	3.292	2.962	2.621	2.546	2.373	2.349	2.050	2.047	2.103	2.022
CY	56	49	44	38	45	31	26	24	26	24
LV	162	115	92	64	58	72	73	79	78	72
LT	-	-	-	-	-	-	93	86	85	-
LU	24	21	24	21	18	20	28	24	23	14
HU	601	480	430	341	321	280	266	309	294	286
MT	8	6	8	6	6	6	6	6	3	10
NL	406	417	387	317	315	341	289	283	323	330
AT	405	399	357	316	297	298	275	254	267	250
PL	2.144	2.070	1.898	1.648	1.692	1.517	1.373	1.356	1.287	1.372
PT	555	496	466	506	479	406	351	359	331	317
RO	937	1.152	974	872	764	763	672	657	733	711
SI	172	133	100	73	87	76	72	60	72	77
SK	289	258	162	150	-	-	-	-	-	-
FI	217	182	153	159	166	160	150	129	155	164
SE	266	231	207	154	170	145	138	143	153	152
UK	1.550	1.333	1.163	974	981	917	896	920	952	927
EU	22.066	20.044	18.218	16.281	15.946	14.792	13.417	13.517	13.768	13.434
Yearly Change		-9,2%	-9,1%	-10,6%	-2,1%	-7,2%	-9,3%	0,8%	1,9%	-2,4%
IS	12	8	9	3	5	5	6	2	9	10
NO	123	147	122	123	93	77	110	81	70	88
CH	227	218	204	181	183	183	144	148	146	117

Source: CARE (EU road accidents database) or national publications

Last update: April 2018

BG is not included in the EU totals due to missing gender data.

Table 21: Annual number of female fatalities as passengers by country, 2007-2016

	2007	2008	2009	2010	2011	2012	2013	2014	2015	2016
BE	49	74	66	46	53	40	50	45	46	38
BG	-	115	100	-	-	-	-	-	-	-
CZ	103	97	74	58	56	56	47	56	38	48
DK	23	24	22	24	12	7	23	13	12	15
DE	350	348	327	308	279	233	242	226	223	213
EE	18	8	11	10	14	6	8	4	9	-
IE	28	22	11	13	18	11	10	13	-	-
EL	171	141	135	119	100	81	78	76	64	76
ES	364	324	260	225	204	207	162	175	148	189
FR	374	322	356	306	314	280	245	239	316	258
HR	-	66	66	38	32	30	38	19	28	24
IT	396	370	322	315	282	253	240	253	208	218
CY	8	5	6	4	1	3	2	3	5	3
LV	34	24	13	9	2	15	11	19	22	13
LT	-	-	-	-	-	-	14	20	21	-
LU	1	0	4	4	4	5	1	3	0	4
HU	126	85	70	76	71	64	51	64	62	50
MT	0	0	3	3	-	-	-	-	1	3
NL	46	38	42	22	27	32	17	18	12	-
AT	56	45	53	33	39	44	28	21	35	28
PL	488	469	384	339	302	265	265	237	231	305
PT	92	95	79	80	85	52	53	42	39	48
RO	278	311	283	227	177	200	167	192	173	182
SI	19	12	19	8	12	9	7	12	9	6
SK	54	41	40	29	-	-	-	-	-	-
FI	41	17	30	21	29	22	18	14	20	12
SE	46	31	30	20	20	11	17	23	18	20
UK	254	203	191	161	143	144	144	125	133	164
EU	3.499	3.185	2.911	2.512	2.322	2.116	1.970	1.944	1.915	2.001
Yearly Change		-9,0%	-8,6%	-13,7%	-7,6%	-8,9%	-6,9%	-1,3%	-1,5%	4,5%
IS	1	0	2	2	0	0	3	2	3	2
NO	24	21	20	18	17	7	18	11	15	7
CH	12	27	13	18	13	26	13	16	16	14

Source: CARE (EU road accidents database) or national publications

Last update: April 2018

BG is not included in the EU totals due to missing gender data.

Annual Accident Report 2018

Table 22: Annual number of male fatalities as passengers by country, 2007-2016

	2007	2008	2009	2010	2011	2012	2013	2014	2015	2016
BE	81	72	69	85	64	63	57	51	47	45
BG	-	180	167	-	-	-	-	-	-	-
CZ	134	112	97	70	81	62	52	47	74	53
DK	34	36	31	28	24	15	14	18	12	11
DE	385	357	296	280	290	243	227	202	207	203
EE	29	22	15	6	9	11	4	4	5	-
IE	43	34	31	38	16	21	23	25	-	-
EL	172	144	153	122	105	86	68	54	56	51
ES	441	343	289	269	184	158	128	134	126	130
FR	446	428	382	366	367	361	279	282	306	286
HR	-	87	74	50	46	40	46	31	34	30
IT	463	410	314	326	299	302	302	259	269	234
CY	5	6	12	5	7	1	5	4	3	3
LV	50	57	29	16	12	13	15	34	18	14
LT	-	-	-	-	-	-	38	41	35	-
LU	9	2	5	2	1	2	4	2	3	3
HU	131	118	76	85	73	57	67	50	80	69
MT	1	0	0	1	-	-	-	-	1	0
NL	59	53	50	44	29	33	26	22	19	-
AT	53	52	59	47	40	32	21	23	28	24
PL	704	711	555	473	533	393	386	304	308	309
PT	117	74	100	110	76	65	53	54	45	44
RO	409	458	443	353	285	293	248	236	271	241
SI	44	16	17	14	10	10	10	9	11	12
SK	69	79	53	46	-	-	-	-	-	-
FI	28	46	36	26	24	15	25	18	23	27
SE	43	31	28	20	30	21	25	17	30	27
UK	323	257	239	151	166	159	143	153	138	138
EU	4.399	4.043	3.492	3.071	2.856	2.541	2.313	2.121	2.220	2.084
Yearly Change		-8,1%	-13,6%	-12,1%	-7,0%	-11,0%	-9,0%	-8,3%	4,6%	-6,1%
IS	0	2	4	0	1	1	1	0	3	1
NO	29	30	30	22	17	14	15	16	6	12
CH	32	21	30	23	22	28	16	15	11	7

Source: CARE (EU road accidents database) or national publications

Last update: April 2018

BG is not included in the EU totals due to missing gender data.

Table 23: Annual number of female fatalities as pedestrians by country, 2007-2016

	2007	2008	2009	2010	2011	2012	2013	2014	2015	2016
BE	46	41	53	46	50	44	49	40	38	37
BG	-	80	78	-	-	-	-	-	-	-
CZ	86	88	74	65	67	60	62	52	43	46
DK	26	25	24	18	15	15	15	12	14	13
DE	290	290	245	190	277	228	260	203	214	214
EE	16	15	10	5	11	11	12	15	9	-
IE	28	17	14	12	14	9	13	21	-	-
EL	103	99	71	66	69	68	65	35	47	53
ES	221	176	171	181	144	135	122	120	152	122
FR	237	240	212	212	202	210	181	221	174	202
HR	-	53	41	40	28	25	28	30	23	25
IT	256	253	291	225	256	212	200	222	215	207
CY	3	6	6	6	7	5	4	7	9	5
LV	52	38	15	10	6	19	20	18	17	18
LT	-	-	-	-	-	-	34	44	35	-
LU	2	2	6	0	3	2	3	0	4	4
HU	102	90	78	60	51	51	51	52	53	45
MT	1	1	2	1	-	-	-	-	1	1
NL	34	28	32	31	26	24	21	16	22	18
AT	36	44	39	52	39	33	36	33	32	34
PL	550	553	458	367	386	341	335	345	279	280
PT	50	51	49	77	79	66	47	55	48	49
RO	400	377	330	293	251	242	272	229	223	264
SI	16	11	10	9	5	8	8	6	10	9
SK	70	46	32	43	-	-	-	-	-	-
FI	14	16	11	16	20	13	17	16	16	12
SE	25	24	19	11	25	17	15	21	11	18
UK	229	219	186	132	152	132	130	164	147	152
EU	2.980	2.837	2.513	2.202	2.261	2.048	2.044	2.021	1.900	1.936
Yearly Change		-4,8%	-11,4%	-12,4%	2,7%	-9,4%	-0,2%	-1,1%	-6,0%	1,9%
IS	0	0	1	1	2	1	1	0	1	0
NO	12	13	11	11	8	6	8	7	1	4
CH	36	31	25	35	34	37	38	19	27	23

Source: CARE (EU road accidents database) or national publications

Last update: April 2018

BG is not included in the EU totals due to missing gender data.

Annual Accident Report 2018

Table 24: Annual number of male fatalities as pedestrians by country, 2007-2016

	2007	2008	2009	2010	2011	2012	2013	2014	2015	2016
BE	57	58	48	58	62	60	49	65	54	39
BG	-	187	120	-	-	-	-	-	-	-
CZ	146	150	95	97	105	96	95	69	102	81
DK	42	33	28	26	18	16	18	10	13	23
DE	405	363	346	286	337	299	300	324	331	286
EE	21	26	12	9	15	18	11	11	15	-
IE	52	31	26	32	33	20	18	21	-	-
EL	151	144	129	113	154	102	86	90	81	96
ES	363	319	298	288	234	233	246	216	213	264
FR	324	308	284	273	317	279	284	278	292	351
HR	-	83	62	65	43	47	41	43	38	42
IT	371	393	376	396	333	364	351	356	387	363
CY	14	10	3	7	6	5	4	3	7	9
LV	105	67	45	41	39	43	49	53	46	37
LT	-	-	-	-	-	-	61	65	45	-
LU	5	4	6	1	3	4	2	3	3	4
HU	184	159	106	129	73	101	96	98	94	106
MT	2	0	2	1	-	-	-	-	4	7
NL	52	28	31	31	39	40	30	34	38	26
AT	72	58	62	46	48	48	46	38	52	39
PL	1.393	1.318	1.003	856	1.018	815	804	771	636	588
PT	106	104	99	118	120	93	97	90	97	74
RO	713	690	685	575	496	486	454	468	426	453
SI	15	28	14	17	16	11	12	8	6	13
SK	147	158	81	83	-	-	-	-	-	-
FI	34	37	19	19	21	16	17	20	16	17
SE	33	21	25	20	28	33	27	31	17	24
UK	434	372	338	283	314	297	275	300	280	311
EU	5.385	5.022	4.284	3.931	4.017	3.671	3.557	3.549	3.397	3.417
Yearly Change		-6,7%	-14,7%	-8,2%	2,2%	-8,6%	-3,1%	-0,2%	-4,3%	0,6%
IS	1	0	1	1	2	1	0	0	0	2
NO	11	18	15	13	8	16	10	11	11	11
CH	43	28	35	40	35	38	31	24	31	27

Source: CARE (EU road accidents database) or national publications

Last update: April 2018

BG is not included in the EU totals due to missing gender data.

4 Fatalities 2016

4.1 People involved

4.1.1 Age and gender

Table 25: Number of total fatalities by age group by country, 2016

	unknown	0-14	15-17	18-24	25-49	50-64	65+	Total
BE	9	15	9	87	259	111	147	637
BG	6	20	12	97	278	148	147	708
CZ	1	14	9	65	224	138	160	611
DK	0	6	2	31	67	33	72	211
DE	3	66	83	435	889	681	1.049	3.206
EE	0	4	4	5	29	12	13	67
IE	3	12	6	28	73	28	43	193
EL	5	19	16	101	293	154	236	824
ES	6	28	23	176	669	393	515	1.810
FR	0	108	95	596	1.182	607	883	3.471
HR	0	4	4	42	97	77	83	307
IT	34	49	66	352	1.111	626	1.045	3.283
CY	-	1	6	5	12	8	14	46
LV	10	2	5	18	54	34	35	158
LT	3	5	6	29	87	46	66	242
LU	0	2	0	3	13	2	12	32
HU	1	10	8	47	226	156	159	607
MT	0	0	1	2	13	2	5	23
NL	1	12	9	75	138	100	198	533
AT	0	7	15	56	134	83	137	432
PL	1	72	74	440	1.144	639	656	3.026
PT	1	7	7	54	158	135	201	563
RO	9	74	51	195	637	438	509	1.913
SI	0	3	3	21	43	36	24	130
SK	53	11	7	59	126	67	48	371
FI	0	10	8	41	85	45	69	258
SE	0	6	6	31	78	60	89	270
UK	1	64	58	279	680	322	456	1.860
EU	148	631	593	3.370	8.799	5.181	7.071	25.792
%	0,6%	2,4%	2,3%	13,1%	34,1%	20,1%	27,4%	100,0%
IS	0	1	2	0	5	4	6	18
NO	1	2	3	20	40	37	32	135
CH	0	12	4	26	58	48	68	216

Source: CARE (EU road accidents database) or national publications
Last update: April 2018

Table 26: Number of female fatalities by age group by country, 2016

	unknown	0-14	15-17	18-24	25-49	50-64	65+	Total
BE	1	6	3	19	43	19	55	146
BG	-	-	-	-	-	-	-	-
CZ	0	0	2	17	38	30	59	146
DK	0	2	1	9	11	7	28	58
DE	0	25	20	92	161	176	390	864
EE	0	2	3	1	6	5	6	23
IE	0	5	1	5	17	13	17	58
EL	1	6	2	21	41	34	63	168
ES	0	15	13	45	108	76	153	410
FR	0	39	23	118	214	126	316	836
HR	0	2	4	3	13	15	27	64
IT	7	22	18	65	185	105	262	664
CY	0	0	0	1	1	3	5	10
LV	1	2	2	2	10	5	13	35
LT	0	1	2	3	23	14	31	74
LU	0	0	0	1	3	1	6	11
HU	0	3	2	13	46	27	54	145
MT	0	0	1	0	2	1	2	6
NL	0	6	0	18	26	30	68	148
AT	0	4	3	10	26	29	47	119
PL	0	22	29	73	218	131	284	757
PT	0	1	3	10	24	25	65	128
RO	4	26	17	41	125	99	196	508
SI	0	1	0	4	9	7	7	28
SK	12	3	3	12	19	20	23	92
FI	0	4	1	6	6	6	27	50
SE	0	2	1	7	7	13	35	65
UK	0	24	23	47	131	68	191	484
EU	26	223	177	643	1.513	1.085	2.430	6.097
%	0,4%	3,7%	2,9%	10,5%	24,8%	17,8%	39,9%	100,0%
IS	0	1	0	0	0	1	3	5
NO	0	1	1	1	6	6	9	24
CH	0	8	2	6	17	8	24	65

Source: CARE (EU road accidents database) or national publications
Last update: April 2018

Table 27: Number of male fatalities by age group by country, 2016

	unknown	0-14	15-17	18-24	25-49	50-64	65+	Total
BE	0	9	6	68	215	92	91	481
BG	-	-	-	-	-	-	-	-
CZ	1	0	7	48	186	108	101	451
DK	0	4	1	22	56	26	44	153
DE	3	41	63	343	728	505	659	2.342
EE	0	2	1	4	23	7	7	44
IE	1	7	5	23	56	15	26	133
EL	4	13	14	80	252	120	173	656
ES	4	13	10	131	561	317	359	1.395
FR	0	69	72	478	968	481	567	2.635
HR	0	2	0	39	84	62	56	243
IT	27	27	48	287	926	521	783	2.619
CY	0	1	6	4	11	5	9	36
LV	9	0	3	16	44	29	22	123
LT	0	4	4	26	64	32	35	165
LU	0	2	0	2	10	1	6	21
HU	0	7	6	34	180	129	105	461
MT	0	0	0	2	11	1	3	17
NL	1	6	9	57	112	70	130	385
AT	0	3	12	46	108	54	90	313
PL	1	50	45	367	926	508	372	2.269
PT	1	6	4	44	134	110	136	435
RO	5	48	34	154	512	339	313	1.405
SI	0	2	3	17	34	29	17	102
SK	41	8	4	47	107	47	25	279
FI	0	6	7	35	79	39	42	208
SE	0	4	5	24	71	47	54	205
UK	1	40	35	232	549	254	265	1.376
EU	99	374	404	2.630	7.007	3.948	4.490	18.952
%	0,5%	2,0%	2,1%	13,9%	37,0%	20,8%	23,7%	100,0%
IS	0	0	2	0	5	3	3	13
NO	1	1	2	19	34	31	23	111
CH	0	4	2	20	41	40	44	151

Source: CARE (EU road accidents database) or national publications
Last update: April 2018

4.2 Modes of transport

4.2.1 Mode of transport by age

Table 28: Number of pedestrian fatalities by age group by country, 2016

	unknown	0-14	15-17	18-24	25-49	50-64	65+	Total
BE	3	4	2	7	16	8	38	78
BG	5	9	4	2	27	37	80	164
CZ	1	3	0	1	34	32	59	130
DK	0	3	0	0	8	4	21	36
DE	1	27	8	34	75	74	281	500
EE	0	2	0	1	7	6	8	24
IE	0	6	1	2	11	6	16	42
EL	3	11	1	3	22	23	86	149
ES	1	7	5	16	77	64	219	389
FR	0	28	12	45	105	77	286	553
HR	0	2	0	4	9	16	36	67
IT	2	12	9	16	96	92	343	570
CY	0	0	0	0	2	2	10	14
LV	2	0	2	2	18	11	20	55
LT	1	1	1	5	20	19	34	81
LU	0	1	0	1	0	1	5	8
HU	1	1	2	7	32	51	58	152
MT	0	0	0	2	2	0	4	8
NL	1	2	3	1	7	6	24	44
AT	0	3	1	3	13	11	42	73
PL	1	16	12	32	238	258	311	868
PT	0	2	0	4	15	29	73	123
RO	9	46	18	21	142	178	303	717
SI	0	0	0	2	5	5	10	22
SK	20	4	3	9	29	32	29	126
FI	0	3	0	3	5	6	12	29
SE	0	4	1	1	3	12	21	42
UK	1	33	13	38	135	77	166	463
EU	52	230	98	262	1.153	1.137	2.595	5.527
%	0,9%	4,2%	1,8%	4,7%	20,9%	20,6%	47,0%	100,0%
IS	-	-	-	-	-	-	-	-
NO	0	0	0	0	3	7	5	15
CH	0	6	0	5	11	4	24	50

Source: CARE (EU road accidents database) or national publications

Last update: April 2018

Table 29: Number of pedal cyclist fatalities by age group by country, 2016

	unknown	0-14	15-17	18-24	25-49	50-64	65+	Total
BE	0	5	3	2	12	12	37	71
BG	1	3	0	1	5	7	12	29
CZ	0	1	0	0	10	20	22	53
DK	0	1	1	3	5	6	15	31
DE	1	5	7	14	46	88	232	393
EE	0	0	0	0	0	0	0	0
IE	0	0	0	0	8	2	3	13
EL	0	3	2	1	2	5	5	18
ES	0	1	2	3	20	19	22	67
FR	0	10	4	11	25	45	67	162
HR	0	1	0	0	1	11	14	27
IT	1	3	2	10	67	58	134	275
CY	0	0	0	0	0	0	0	0
LV	1	0	0	0	1	3	2	7
LT	1	1	0	0	5	7	8	22
LU	0	0	0	0	1	0	0	1
HU	0	0	1	5	10	32	25	73
MT	0	0	0	0	0	1	0	1
NL	0	6	3	8	9	14	61	101
AT	0	1	1	1	6	13	26	48
PL	0	13	6	11	47	84	110	271
PT	1	2	0	1	8	7	14	33
RO	0	5	5	3	45	54	64	176
SI	0	1	1	1	2	4	3	12
SK	1	1	1	1	7	8	8	27
FI	0	1	0	0	3	7	15	26
SE	0	1	0	3	2	5	11	22
UK	0	5	5	8	34	30	23	105
EU	7	70	44	87	381	542	933	2.064
%	0,3%	3,4%	2,1%	4,2%	18,5%	26,3%	45,2%	100,0%
IS	0	0	0	0	0	0	0	0
NO	0	2	0	0	2	3	5	12
CH	0	3	1	0	8	10	11	33

Source: CARE (EU road accidents database) or national publications
Last update: April 2018

Table 30: Number of moped rider and passenger fatalities by age group by country, 2016

	unknown	0-14	15-17	18-24	25-49	50-64	65+	Total
BE	1	0	1	1	8	2	3	16
BG	0	0	1	3	3	1	3	11
CZ	0	0	0	0	1	0	0	1
DK	0	0	0	1	4	2	1	8
DE	0	0	5	3	11	20	29	68
EE	0	0	0	0	0	0	0	0
IE	-	-	-	-	-	-	-	0
EL	1	0	1	3	9	2	9	25
ES	0	0	4	8	13	11	18	54
FR	0	4	22	30	40	18	7	121
HR	0	0	0	1	5	2	2	10
IT	1	3	21	16	28	16	31	116
CY	0	0	1	1	0	0	0	2
LV	0	0	0	1	1	2	2	6
LT	0	0	2	0	1	0	0	3
LU	0	0	0	0	0	0	0	0
HU	0	0	1	3	4	2	6	16
MT	0	0	0	0	0	0	0	0
NL	0	0	2	5	10	7	10	34
AT	0	0	5	1	0	1	1	8
PL	0	5	8	16	23	13	12	77
PT	0	0	0	2	14	10	18	44
RO	0	1	3	4	11	9	5	33
SI	0	0	0	1	0	1	1	3
SK	-	-	-	-	-	-	-	0
FI	0	0	3	0	1	0	1	5
SE	0	0	1	0	1	4	2	8
UK	0	0	4	1	0	2	1	8
EU	3	13	85	101	188	125	162	677
%	0,4%	1,9%	12,6%	14,9%	27,8%	18,5%	23,9%	100,0%
IS	-	-	-	-	-	-	-	-
NO	0	0	0	1	0	0	0	1
CH	0	0	1	0	0	0	5	6

Source: CARE (EU road accidents database) or national publications
Last update: April 2018

Table 31: Number of motorcycle rider and passenger fatalities by age group by country, 2016

	unknown	0-14	15-17	18-24	25-49	50-64	65+	Total
BE	0	0	0	7	47	20	3	77
BG	0	0	1	17	31	1	0	50
CZ	0	0	3	6	43	8	2	62
DK	0	0	0	4	14	5	3	26
DE	0	0	40	89	215	159	33	536
EE	0	0	0	0	0	0	0	0
IE	0	0	0	2	15	5	2	24
EL	1	0	8	46	129	34	22	240
ES	0	0	5	37	206	86	9	343
FR	0	1	13	98	333	142	26	613
HR	0	0	0	9	19	9	1	38
IT	0	1	15	78	353	160	50	657
CY	0	0	3	1	6	0	0	10
LV	0	0	0	3	7	1	1	12
LT	0	0	0	4	8	1	0	13
LU	0	0	0	0	2	0	1	3
HU	0	0	1	5	36	4	2	48
MT	0	0	0	0	9	0	0	9
NL	0	0	0	8	23	11	2	44
AT	0	0	1	10	38	24	12	85
PL	0	0	6	63	157	13	5	244
PT	0	0	5	8	34	10	2	59
RO	0	0	3	11	29	2	1	46
SI	0	0	1	4	12	5	0	22
SK	3	0	0	7	15	1	1	27
FI	0	0	1	2	9	4	1	17
SE	0	0	1	3	18	9	5	36
UK	0	1	5	56	163	72	19	316
EU	4	3	112	578	1.971	786	203	3.657
%	0,1%	0,1%	3,1%	15,8%	53,9%	21,5%	5,6%	100,0%
IS	0	0	0	0	2	0	0	2
NO	0	0	2	1	9	9	1	22
CH	0	0	1	8	14	18	2	43

Source: CARE (EU road accidents database) or national publications
Last update: April 2018

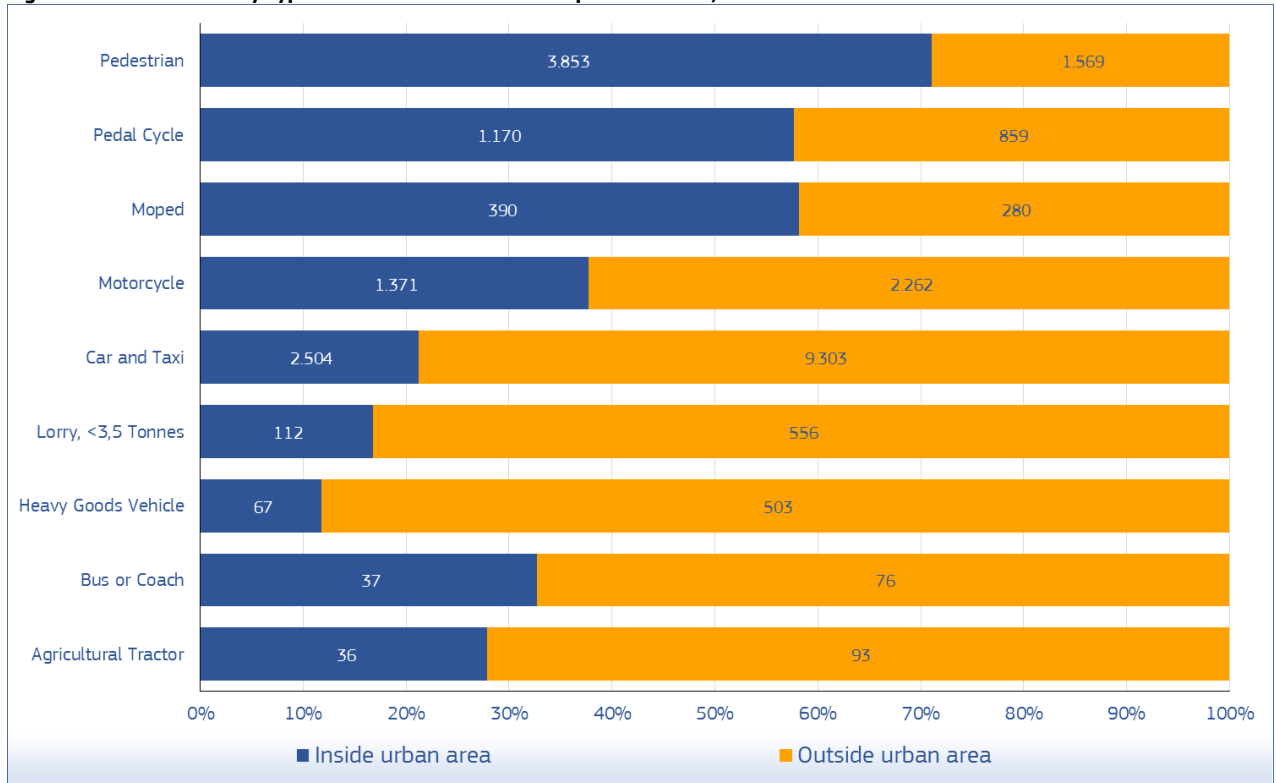
Table 32: Number of car driver and passenger fatalities by age group by country, 2016

	unknown	0-14	15-17	18-24	25-49	50-64	65+	Total
BE	4	5	2	69	139	48	60	327
BG	0	8	5	70	178	87	85	433
CZ	0	10	6	56	120	63	73	328
DK	0	2	1	22	29	13	29	96
DE	1	34	23	281	481	283	434	1.537
EE	0	2	3	4	19	3	4	35
IE	3	5	4	22	36	12	21	103
EL	0	5	2	48	119	80	86	340
ES	3	18	6	91	267	155	214	754
FR	0	60	36	382	582	252	448	1.760
HR	0	1	4	28	57	33	25	148
IT	14	29	18	220	505	247	444	1.477
CY	0	0	1	2	1	4	2	10
LV	6	2	3	12	24	15	9	71
LT	0	3	3	17	51	17	24	115
LU	0	1	0	2	9	1	6	19
HU	0	8	2	26	122	54	57	269
MT	0	0	1	0	2	1	1	5
NL	0	4	1	48	70	45	57	225
AT	0	3	6	39	66	25	52	191
PL	0	34	41	305	613	221	203	1.417
PT	0	3	2	36	68	47	69	225
RO	0	18	20	147	335	152	113	785
SI	0	0	1	8	19	12	5	45
SK	29	6	3	41	62	21	9	171
FI	0	2	3	34	54	23	34	150
SE	0	1	3	20	46	24	44	138
UK	0	25	30	167	298	109	224	853
EU	60	289	230	2.197	4.372	2.047	2.832	12.027
%	0,5%	2,4%	1,9%	18,3%	36,4%	17,0%	23,5%	100,0%
IS	0	1	2	0	2	3	5	13
NO	1	0	0	16	19	12	19	67
CH	0	3	1	12	20	15	24	75

Source: CARE (EU road accidents database) or national publications
Last update: April 2018

4.2.2 Mode of transport by type of area

Figure 20: Fatalities by type of area and mode of transport in the EU, 2016



Source: CARE (EU road accidents database) or national publications
 Last update: April 2018

Table 33: Number of fatalities by mode of transport and type of area by country (part 1), 2016

	Agricultural tractor		Bus or coach		Car + Taxi		Heavy goods vehicle		Lorry, under 3.5 tonnes	
	inside urban area	outside urban area	inside urban area	outside urban area	inside urban area	outside urban area	inside urban area	outside urban area	inside urban area	outside urban area
BE	0	2	0	0	56	252	1	22	4	31
BG	0	0	1	2	91	305	3	29	0	0
CZ	1	0	0	0	65	263	3	15	7	10
DK	0	1	1	2	14	82	0	3	0	6
DE	2	7	2	2	182	1.355	5	65	3	60
EE	0	0	2	6	4	29	1	2	-	-
IE	-	-	0	0	18	85	1	2	0	5
EL	3	8	0	0	110	230	1	5	4	27
ES	3	16	3	18	80	674	5	50	4	84
FR	0	8	8	4	257	1.503	5	50	13	117
HR	3	2	0	2	68	80	0	3	4	1
IT	4	15	1	2	431	1.046	3	80	21	37
CY	0	1	1	0	8	2	0	0	3	2
LV	0	0	0	0	11	60	0	3	0	2
LT	-	-	-	-	-	-	-	-	-	-
LU	0	0	0	0	2	17	0	0	0	1
HU	0	0	1	9	48	221	5	7	0	15
MT	0	0	0	0	4	1	0	0	0	0
NL	0	0	0	0	46	176	0	6	2	21
AT	0	3	1	0	25	166	1	12	1	9
PL	7	6	5	3	341	1.076	12	102	0	0
PT	7	12	0	0	79	146	3	4	18	23
RO	1	1	6	17	328	457	8	3	21	42
SI	4	0	0	0	8	37	0	3	0	0
SK	-	-	0	0	33	138	9	10	1	0
FI	0	6	0	0	20	130	0	5	1	13
SE	1	2	1	0	23	112	0	6	0	6
UK	0	3	4	9	152	660	1	16	5	44
EU	36	93	37	76	2.504	9.303	67	503	112	556
%	27,9%	72,1%	32,7%	67,3%	21,2%	78,8%	11,8%	88,2%	16,8%	83,2%
IS	0	0	0	0	3	10	0	1	0	0
NO	0	2	0	1	7	60	0	5	0	1
CH	0	4	0	1	15	60	0	1	0	1

Source: CARE (EU road accidents database) or national publications

Last update: April 2018

Table 34: Number of fatalities by mode of transport and type of area by country (part 2), 2016

	Moped		Motor cycle		Pedal cycle		Pedestrian		Total		Total
	inside urban area	outside urban area	inside urban area	outside urban area	inside urban area	outside urban area	inside urban area	outside urban area	inside urban area	outside urban area	
BE	8	5	24	47	33	33	49	24	175	416	591
BG	9	2	26	24	16	13	118	46	264	421	685
CZ	0	1	21	41	27	26	91	39	215	395	610
DK	1	7	4	22	19	12	27	9	66	144	210
DE	38	30	101	435	251	142	360	140	944	2.236	3.180
EE	0	-	0	-	0	-	12	14	19	51	70
IE	-	-	4	20	7	6	30	12	60	130	190
EL	18	7	161	79	8	10	121	28	426	394	820
ES	28	26	109	234	27	40	252	137	511	1.279	1.790
FR	60	61	203	410	77	85	379	174	1.002	2.412	3.414
HR	7	3	22	16	21	6	51	16	176	129	305
IT	73	43	316	341	160	115	452	118	1.461	1.797	3.258
CY	1	1	9	1	0	0	12	2	34	9	43
LV	1	5	3	9	1	6	14	41	30	126	156
LT	-	-	-	-	-	-	2	-	2	0	2
LU	0	0	0	3	0	1	6	2	8	24	32
HU	13	3	18	30	40	33	91	61	216	379	595
MT	0	0	3	6	0	1	7	1	14	9	23
NL	21	13	14	30	62	38	25	13	170	297	467
AT	2	6	11	74	22	26	47	26	110	322	432
PL	39	38	127	117	152	119	583	285	1.266	1.746	3.012
PT	35	9	34	25	23	10	97	26	296	255	551
RO	24	9	31	15	134	42	597	120	1.150	706	1.856
SI	2	1	7	15	4	8	11	11	36	75	111
SK	-	-	13	14	15	12	86	40	157	214	371
FI	3	2	5	12	16	10	18	11	63	189	252
SE	3	4	8	28	12	6	25	15	73	179	252
UK	4	4	97	214	43	59	290	158	596	1.167	1.763
EU	390	280	1.371	2.262	1.170	859	3.853	1.569	9.540	15.501	25.041
%	58,2%	41,8%	37,7%	62,3%	57,7%	42,3%	71,1%	28,9%	38,1%	61,9%	-
IS	0	0	1	1	0	0	1	1	0	0	18
NO	0	1	4	18	5	6	9	6	4	12	125
CH	2	4	11	32	22	11	37	13	7	14	214

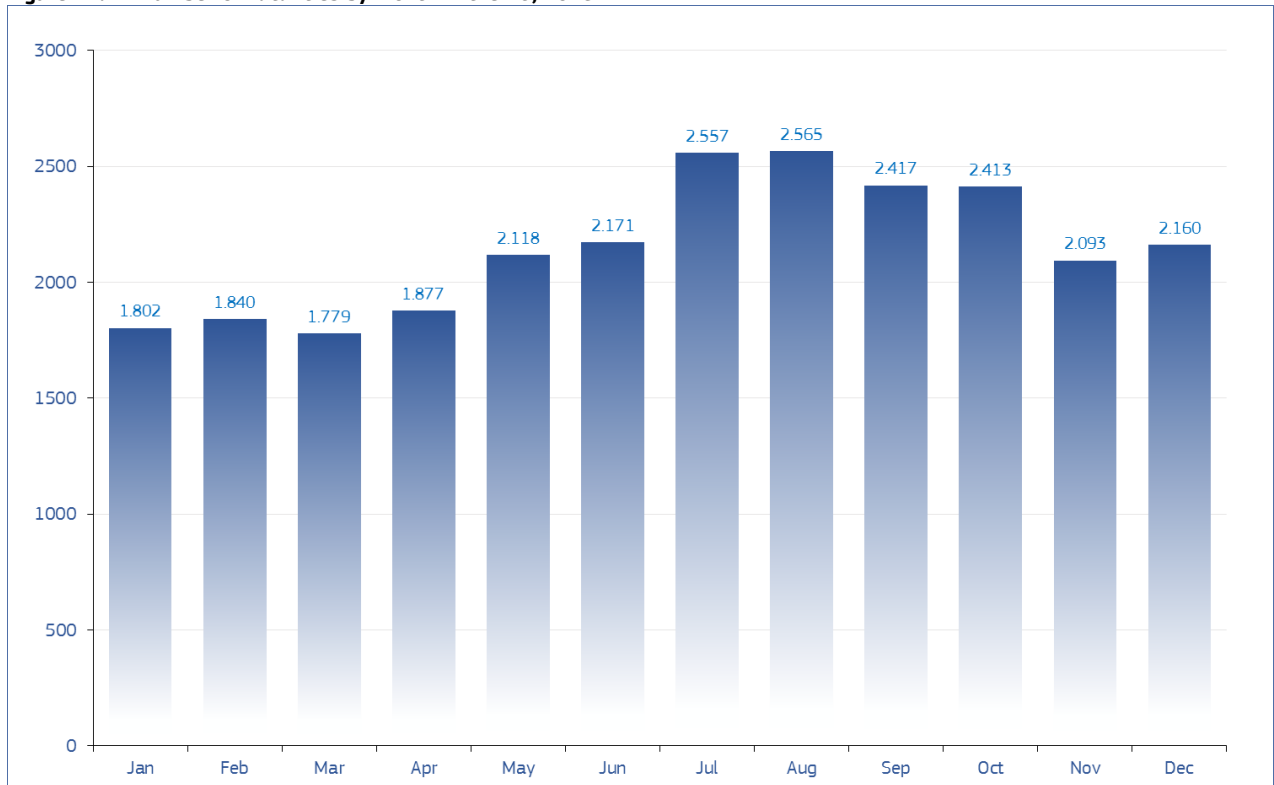
Source: CARE (EU road accidents database) or national publications

Last update: April 2018

4.3 Accident characteristics

4.3.1 Various periods of time (month, day of week, hour of day)

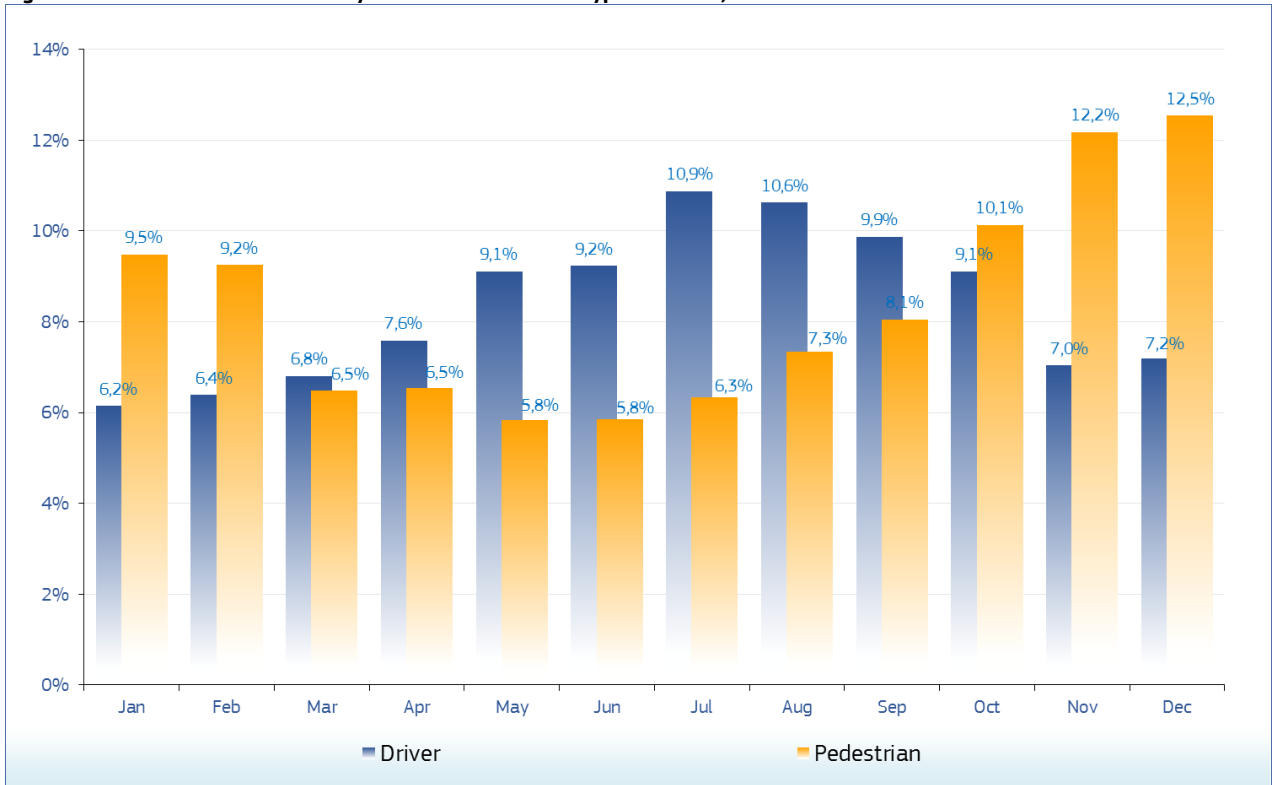
Figure 21: Number of fatalities by month in the EU, 2016



Source: CARE (EU road accidents database) or national publications
Last update: April 2018

Annual Accident Report 2018

Figure 22: Number of fatalities by month and road user type in the EU, 2016



Source: CARE (EU road accidents database) or national publications
 Last update: April 2018

Table 35: Number of fatalities by month by country (January to June), 2016

	January	February	March	April	May	June
BE	52	60	45	54	57	43
BG	51	42	44	64	53	64
CZ	35	39	56	40	47	41
DK	16	10	14	14	22	14
DE	239	190	189	247	322	259
EE	3	11	3	6	7	2
IE	16	13	15	14	18	18
EL	64	57	54	68	76	69
ES	147	136	153	132	132	145
FR	236	262	255	243	293	285
HR	23	24	13	17	34	26
IT	230	241	227	237	273	302
CY	1	4	2	5	2	4
LV	10	11	13	11	7	15
LT	21	22	12	15	12	20
LU	2	4	1	1	2	4
HU	44	50	40	28	44	61
MT	2	1	1	2	3	1
NL	37	53	41	34	36	34
AT	26	22	31	36	36	39
PL	164	195	204	217	244	278
PT	45	49	47	35	34	43
RO	103	132	122	133	127	169
SI	13	5	9	13	12	11
SK	31	27	21	20	21	27
FI	17	19	13	18	22	24
SE	16	24	9	21	23	28
UK	158	137	145	152	159	145
EU	1.802	1.840	1.779	1.877	2.118	2.171
%	7,0%	7,1%	6,9%	7,3%	8,2%	8,4%
IS	1	1	0	1	1	3
NO	13	10	8	9	7	15
CH	13	6	14	13	19	24

Source: CARE (EU road accidents database) or national publications
Last update: April 2018

Table 36: Number of fatalities by month by country (July to December), 2016

	July	August	September	October	November	December	Total
BE	64	65	45	62	51	39	637
BG	71	76	76	60	58	49	708
CZ	67	63	66	63	40	54	611
DK	20	18	28	19	22	14	211
DE	329	346	326	299	244	216	3.206
EE	3	9	6	1	10	6	67
IE	18	15	11	18	20	17	193
EL	79	81	69	84	65	58	824
ES	191	188	155	141	146	144	1.810
FR	356	301	334	313	257	336	3.471
HR	22	41	30	35	16	26	307
IT	367	338	295	276	265	232	3.283
CY	7	5	3	4	3	6	46
LV	15	15	20	11	15	15	158
LT	13	22	16	29	31	29	242
LU	2	3	2	2	6	3	32
HU	54	46	53	74	55	58	607
MT	3	2	3	2	2	1	23
NL	67	39	48	48	43	53	533
AT	63	38	43	37	33	28	432
PL	255	312	309	306	250	292	3.026
PT	55	55	48	61	46	45	563
RO	163	210	182	214	165	193	1.913
SI	15	20	9	9	3	11	130
SK	39	40	32	42	47	24	371
FI	28	29	23	27	22	16	258
SE	36	25	27	22	20	19	270
UK	155	163	158	154	158	176	1.860
EU	2.557	2.565	2.417	2.413	2.093	2.160	25.792
%	9,9%	9,9%	9,4%	9,4%	8,1%	8,4%	100,0%
IS	1	1	3	3	0	3	18
NO	22	13	14	11	5	8	135
CH	22	22	33	17	17	16	216

Source: CARE (EU road accidents database) or national publications
Last update: April 2018

Table 37: Number of driver fatalities by month by country (January to June), 2016

	January	February	March	April	May	June
BE	33	45	33	38	43	35
BG	21	21	23	30	22	38
CZ	14	16	29	29	36	30
DK	11	7	8	12	15	10
DE	139	122	117	190	231	200
EE	0	4	3	4	3	2
IE	13	6	10	6	9	9
EL	44	33	43	46	59	47
ES	90	76	81	74	89	102
FR	147	155	188	168	216	200
HR	13	15	5	10	25	15
IT	131	160	152	171	212	215
CY	1	3	1	3	1	2
LV	7	6	5	7	6	7
LT	9	6	7	9	4	14
LU	1	1	1	0	2	1
HU	22	26	20	18	28	42
MT	1	1	1	0	2	1
NL	31	41	30	24	31	30
AT	14	11	21	26	25	32
PL	58	81	104	129	153	169
PT	30	29	34	25	23	33
RO	33	49	46	53	61	83
SI	6	3	6	11	9	9
SK	11	9	8	10	8	17
FI	15	14	8	13	21	16
SE	9	12	6	15	18	22
UK	76	66	95	88	100	90
EU	980	1.018	1.085	1.209	1.452	1.471
%	6,2%	6,4%	6,8%	7,6%	9,1%	9,2%
IS	1	1	0	0	1	2
NO	10	7	6	6	5	13
CH	9	2	8	9	12	19

Source: CARE (EU road accidents database) or national publications
Last update: April 2018

Table 38: Number of driver fatalities by month by country (July to December), 2016

	July	August	September	October	November	December	Total
BE	52	47	31	48	32	29	466
BG	38	41	36	33	23	20	346
CZ	49	43	43	35	17	29	370
DK	14	14	21	11	16	10	149
DE	262	279	248	212	154	136	2.290
EE	3	4	1	1	1	2	28
IE	14	9	7	12	8	9	112
EL	54	51	37	56	43	35	548
ES	119	117	100	87	84	82	1.101
FR	249	218	235	210	163	225	2.374
HR	13	24	18	23	10	15	186
IT	268	242	217	184	159	150	2.261
CY	4	3	1	3	2	2	26
LV	9	9	11	5	3	1	76
LT	7	11	6	12	10	8	103
LU	1	3	1	2	2	2	17
HU	33	27	34	42	29	15	336
MT	1	0	2	1	2	0	12
NL	57	35	44	39	35	40	437
AT	52	30	31	24	20	21	307
PL	148	178	176	130	106	112	1.544
PT	29	35	31	37	19	23	348
RO	76	102	68	89	53	60	773
SI	10	14	7	5	2	8	90
SK	23	21	16	17	19	11	170
FI	22	24	14	22	12	9	190
SE	25	17	19	15	10	11	179
UK	101	96	118	97	87	81	1.095
EU	1.733	1.694	1.573	1.452	1.121	1.146	15.934
%	10,9%	10,6%	9,9%	9,1%	7,0%	7,2%	100,0%
IS	1	1	1	2	0	3	13
NO	16	10	11	9	4	4	101
CH	14	20	24	11	7	10	145

Source: CARE (EU road accidents database) or national publications
Last update: April 2018

Table 39: Number of passenger fatalities by month by country (January to June), 2016

	January	February	March	April	May	June
BE	7	6	7	5	6	5
BG	11	15	15	26	22	20
CZ	6	7	16	1	4	9
DK	2	1	1	1	2	3
DE	33	27	39	28	50	27
EE	1	3	0	1	2	0
IE	0	2	2	4	5	6
EL	8	9	8	10	12	12
ES	22	18	36	31	22	22
FR	40	52	45	41	40	47
HR	5	2	1	2	4	4
IT	35	30	39	34	26	46
CY	0	0	0	0	1	1
LV	0	1	2	1	0	5
LT	4	8	0	4	4	4
LU	1	2	0	0	0	2
HU	7	8	7	5	11	10
MT	1	0	0	1	0	0
NL	3	4	3	2	4	2
AT	3	2	7	5	5	4
PL	36	31	48	37	46	63
PT	7	6	6	2	6	4
RO	20	36	21	24	38	42
SI	1	1	1	1	0	1
SK	6	6	5	5	5	4
FI	0	3	4	3	1	6
SE	5	5	1	3	4	5
UK	32	27	19	31	26	25
EU	296	312	333	308	346	379
%	6,8%	7,1%	7,6%	7,1%	7,9%	8,7%
IS	0	0	0	1	0	1
NO	2	3	1	2	1	1
CH	2	0	1	0	3	1

Source: CARE (EU road accidents database) or national publications
Last update: April 2018

Table 40: Number of passenger fatalities by month by country (July to December), 2016

	July	August	September	October	November	December	Total
BE	8	8	10	9	9	7	87
BG	41	27	29	32	15	14	267
CZ	13	11	14	10	10	10	111
DK	3	3	3	4	1	2	26
DE	41	33	37	41	31	29	416
EE	0	4	3	0	0	0	14
IE	3	4	2	4	5	2	39
EL	11	15	15	11	9	7	127
ES	39	43	24	27	17	19	320
FR	63	48	46	48	27	47	544
HR	7	12	4	7	3	3	54
IT	62	54	33	33	32	28	452
CY	1	0	2	0	0	1	6
LV	3	4	3	1	4	3	27
LT	5	7	5	10	2	3	56
LU	0	0	1	0	1	0	7
HU	10	12	11	12	9	17	119
MT	1	0	0	0	0	0	3
NL	6	2	5	0	0	0	31
AT	7	2	8	5	3	1	52
PL	59	76	72	72	37	37	614
PT	9	13	9	11	10	9	92
RO	47	45	38	43	28	41	423
SI	4	4	2	1	1	1	18
SK	8	8	2	14	10	2	75
FI	4	2	4	2	6	4	39
SE	6	4	4	0	6	4	47
UK	26	33	18	20	18	27	302
EU	487	474	404	417	294	318	4.368
%	11,1%	10,9%	9,2%	9,5%	6,7%	7,3%	100,0%
IS	0	0	1	0	0	0	3
NO	5	0	0	2	1	1	19
CH	4	0	2	5	2	1	21

Source: CARE (EU road accidents database) or national publications
Last update: April 2018

Table 41: Number of pedestrian fatalities by month by country (January to June), 2016

	January	February	March	April	May	June
BE	10	9	5	11	6	3
BG	19	9	5	13	13	7
CZ	15	16	11	10	7	2
DK	3	2	5	1	5	1
DE	67	41	33	29	41	32
EE	2	4	0	1	2	0
IE	3	5	3	4	4	3
EL	12	15	3	12	5	10
ES	35	42	36	27	21	21
FR	49	55	22	34	37	38
HR	5	7	7	5	5	7
IT	64	51	36	32	35	41
CY	0	1	1	2	0	1
LV	3	4	6	3	1	3
LT	8	8	5	2	4	2
LU	0	1	0	1	0	1
HU	15	16	13	5	5	9
MT	0	0	0	1	1	0
NL	3	6	6	5	1	3
AT	9	9	3	5	6	3
PL	70	83	52	51	45	46
PT	8	14	7	8	5	6
RO	50	47	55	56	28	44
SI	6	1	2	1	3	1
SK	14	12	8	5	8	6
FI	2	2	1	2	0	2
SE	2	7	2	3	1	1
UK	50	44	31	33	33	30
EU	524	511	358	362	322	323
%	9,5%	9,2%	6,5%	6,5%	5,8%	5,8%
IS	0	0	0	0	0	0
NO	1	0	1	1	1	1
CH	2	4	5	4	4	4

Source: CARE (EU road accidents database) or national publications
Last update: April 2018

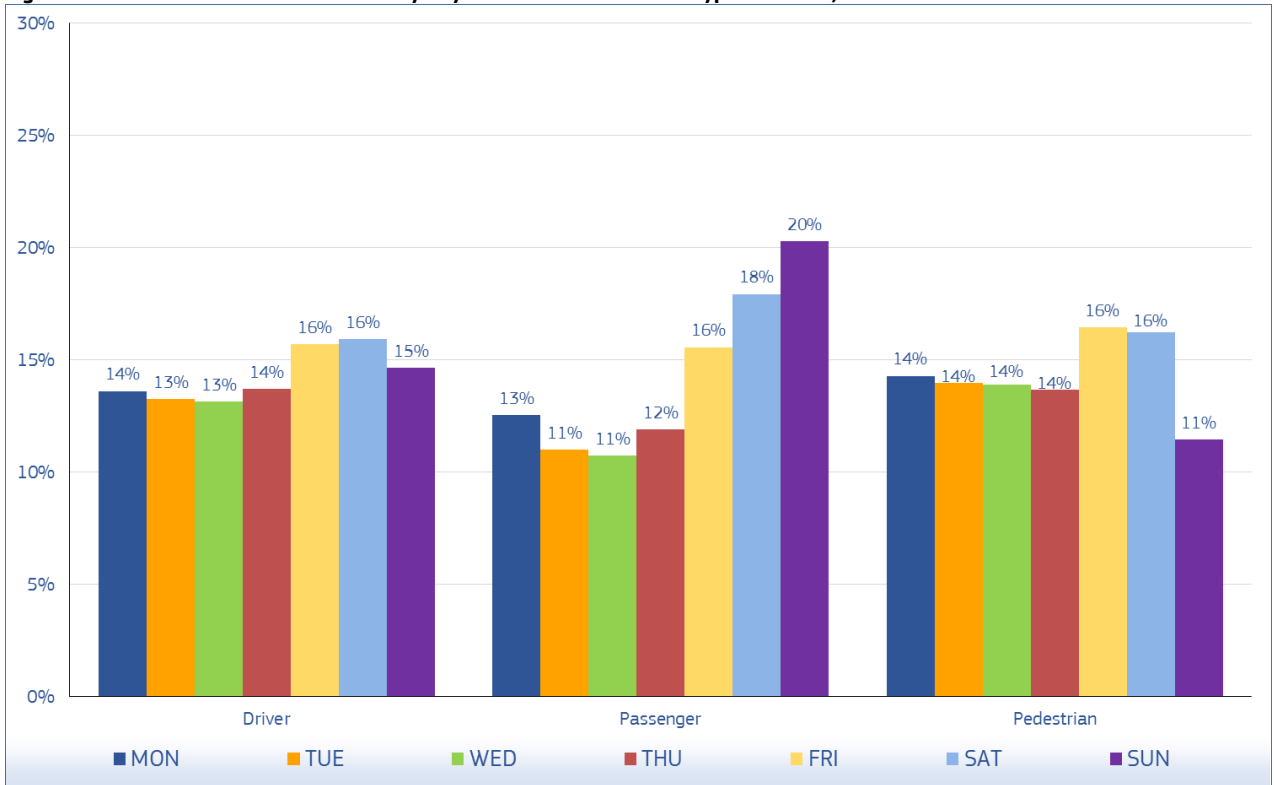
Annual Accident Report 2018

Table 42: Number of pedestrian fatalities by month by country (July to December), 2016

	July	August	September	October	November	December	Total
BE	4	8	4	5	10	3	78
BG	10	20	15	15	21	17	164
CZ	5	9	9	18	13	15	130
DK	3	1	4	4	5	2	36
DE	26	34	41	46	59	51	500
EE	0	0	2	0	9	4	24
IE	1	2	2	2	7	6	42
EL	14	15	17	17	13	16	149
ES	33	28	31	27	45	43	389
FR	44	35	53	55	67	64	553
HR	2	5	8	5	3	8	67
IT	37	42	45	59	74	54	570
CY	2	2	0	1	1	3	14
LV	3	2	6	5	8	11	55
LT	1	4	4	7	19	17	81
LU	1	0	0	0	3	1	8
HU	11	7	8	20	17	26	152
MT	1	2	1	1	0	1	8
NL	1	2	1	5	2	9	44
AT	4	6	4	8	10	6	73
PL	48	58	61	104	107	143	868
PT	17	7	8	13	17	13	123
RO	40	63	76	82	84	92	717
SI	1	2	0	3	0	2	22
SK	8	11	14	11	18	11	126
FI	2	3	5	3	4	3	29
SE	3	4	4	7	4	4	42
UK	28	34	22	37	53	68	463
EU	350	406	445	560	673	693	5.527
%	6,3%	7,3%	8,1%	10,1%	12,2%	12,5%	100,0%
IS	0	0	1	1	0	0	2
NO	1	3	3	0	0	3	15
CH	4	2	7	1	8	5	50

Source: CARE (EU road accidents database) or national publications
Last update: April 2018

Figure 23: Total number of fatalities by day of week and road user type in the EU, 2016



Source: CARE (EU road accidents database) or national publications
 Last update: April 2018

Annual Accident Report 2018

Table 43: Total number of fatalities by day of week by country, 2016

	Monday	Tuesday	Wednesday	Thursday	Friday	Saturday	Sunday	Total
BE	73	80	91	91	89	108	105	637
BG	95	90	65	96	125	117	120	708
CZ	114	80	73	70	97	92	85	611
DK	36	30	22	36	41	24	22	211
DE	442	471	444	421	550	429	449	3.206
EE	8	14	8	7	9	12	9	67
IE	26	18	25	38	27	29	30	193
EL	95	109	105	114	123	128	150	824
ES	265	215	243	250	261	294	282	1.810
FR	461	435	446	479	546	587	517	3.471
HR	32	34	34	46	59	54	48	307
IT	456	422	440	413	502	553	497	3.283
CY	4	4	7	4	9	11	7	46
LV	22	22	24	21	23	28	18	158
LT	32	36	25	24	33	51	41	242
LU	5	5	3	3	4	9	3	32
HU	79	89	73	79	95	115	77	607
MT	1	5	1	3	1	5	7	23
NL	65	82	66	83	83	89	65	533
AT	59	58	54	60	65	66	70	432
PL	409	385	386	398	504	521	423	3.026
PT	73	77	77	61	88	100	87	563
RO	260	226	248	245	310	304	320	1.913
SI	18	18	13	14	19	25	23	130
SK	48	52	47	51	54	64	55	371
FI	33	32	40	31	29	59	34	258
SE	43	32	36	32	33	53	41	270
UK	244	237	231	288	309	290	261	1.860
EU	3.498	3.358	3.327	3.458	4.088	4.217	3.846	25.792
%	13,6%	13,0%	12,9%	13,4%	15,8%	16,4%	14,9%	100,0%
IS	3	0	1	3	4	3	4	18
NO	22	17	17	18	23	18	20	135
CH	26	37	23	37	34	35	24	216

Source: CARE (EU road accidents database) or national publications
Last update: April 2018

Table 44: Number of fatalities by day of week by country, 2016 (drivers)

	Monday	Tuesday	Wednesday	Thursday	Friday	Saturday	Sunday	Total
BE	55	63	68	66	65	79	70	466
BG	53	49	34	40	58	54	58	346
CZ	77	48	39	38	60	60	48	370
DK	24	22	17	25	28	17	16	149
DE	307	344	310	315	406	299	309	2.290
EE	5	8	4	2	2	3	4	28
IE	17	7	20	22	17	14	15	112
EL	60	77	68	75	82	86	100	548
ES	160	134	146	151	160	192	158	1.101
FR	312	294	315	333	373	395	352	2.374
HR	16	23	16	34	35	31	31	186
IT	314	294	305	286	345	381	336	2.261
CY	2	2	3	2	6	7	4	26
LV	11	9	9	11	12	14	10	76
LT	13	24	11	13	9	15	18	103
LU	3	3	1	2	1	6	1	17
HU	43	44	40	48	54	61	46	336
MT	1	2	0	2	0	2	5	12
NL	58	67	53	70	70	71	48	437
AT	33	43	42	42	51	47	49	307
PL	201	186	213	228	247	261	208	1.544
PT	50	55	46	34	52	60	51	348
RO	109	87	117	97	118	118	127	773
SI	13	13	10	10	12	17	15	90
SK	17	30	27	25	19	27	25	170
FI	24	25	30	23	23	38	27	190
SE	31	22	24	23	20	31	28	179
UK	161	139	127	167	176	150	175	1.095
EU	2.170	2.114	2.095	2.184	2.501	2.536	2.334	15.934
%	13,6%	13,3%	13,1%	13,7%	15,7%	15,9%	14,6%	100,0%
IS	3	0	1	3	3	1	2	13
NO	17	10	15	12	19	13	15	101
CH	19	24	17	26	22	19	18	145

Source: CARE (EU road accidents database) or national publications
Last update: April 2018

Annual Accident Report 2018

Table 45: Number of fatalities by day of week by country, 2016 (passengers)

	Monday	Tuesday	Wednesday	Thursday	Friday	Saturday	Sunday	Total
BE	5	8	8	18	11	13	24	87
BG	18	21	13	29	39	37	40	197
CZ	15	18	16	15	11	22	14	111
DK	3	5	2	6	5	4	1	26
DE	60	53	50	41	60	61	91	416
EE	0	3	1	0	3	5	2	14
IE	5	3	1	7	5	9	9	39
EL	17	15	16	14	20	17	28	127
ES	43	39	32	33	42	50	81	320
FR	67	48	53	83	89	105	99	544
HR	6	5	7	4	11	10	11	54
IT	57	52	48	51	61	77	106	452
CY	1	1	1	1	0	1	1	6
LV	6	4	5	3	3	2	4	27
LT	7	2	4	5	7	17	14	56
LU	0	1	2	0	1	1	2	7
HU	14	16	14	16	16	23	20	119
MT	0	1	1	0	0	1	0	3
NL	3	5	6	4	5	3	5	31
AT	15	4	1	8	4	9	11	52
PL	89	75	54	53	104	117	122	614
PT	10	7	11	13	13	15	23	92
RO	46	48	45	44	76	75	89	423
SI	3	1	1	0	4	4	5	18
SK	10	6	5	11	13	15	15	75
FI	6	3	5	4	4	12	5	39
SE	5	3	6	4	6	18	5	47
UK	28	26	54	45	56	48	45	302
EU	539	473	462	512	669	771	872	4.298
%	12,5%	11,0%	10,7%	11,9%	15,6%	17,9%	20,3%	100,0%
IS	0	0	0	0	0	1	2	3
NO	2	4	1	3	2	4	3	19
CH	2	5	1	2	2	7	2	21

Source: CARE (EU road accidents database) or national publications
Last update: April 2018

Table 46: Number of fatalities by day of week by country, 2016 (pedestrians)

	Monday	Tuesday	Wednesday	Thursday	Friday	Saturday	Sunday	Total
BE	13	9	14	5	11	15	11	78
BG	24	20	18	26	28	26	22	164
CZ	22	14	18	17	26	10	23	130
DK	9	3	3	5	8	3	5	36
DE	75	74	84	65	84	69	49	500
EE	3	3	3	5	4	4	2	24
IE	4	8	4	9	5	6	6	42
EL	18	17	21	25	21	25	22	149
ES	62	42	65	66	59	52	43	389
FR	82	93	78	63	84	87	66	553
HR	10	6	11	8	13	13	6	67
IT	85	76	87	76	96	95	55	570
CY	1	1	3	1	3	3	2	14
LV	5	9	10	7	8	12	4	55
LT	12	10	10	6	16	18	9	81
LU	2	1	0	1	2	2	0	8
HU	22	29	19	15	25	31	11	152
MT	0	2	0	1	1	2	2	8
NL	5	11	6	7	3	6	6	44
AT	11	11	11	10	10	10	10	73
PL	119	124	119	117	153	143	93	868
PT	13	15	20	14	23	25	13	123
RO	105	91	86	104	116	111	104	717
SI	2	4	2	4	3	4	3	22
SK	21	16	15	15	22	22	15	126
FI	3	4	5	4	2	9	2	29
SE	7	7	6	5	7	2	8	42
UK	55	72	50	76	77	92	41	463
EU	790	772	768	757	910	897	633	5.527
%	14,3%	14,0%	13,9%	13,7%	16,5%	16,2%	11,5%	100,0%
IS	0	0	0	0	1	1	0	2
NO	3	3	1	3	2	1	2	15
CH	5	8	5	9	10	9	4	50

Source: CARE (EU road accidents database) or national publications
Last update: April 2018

Table 47: Number of fatalities by hour of day (00-08) by country, 2016

	00	01	02	03	04	05	06	07	08
BE	21	24	28	16	17	18	23	21	22
BG	18	4	21	12	11	11	21	30	30
CZ	6	9	10	10	8	24	34	30	36
DK	2	4	2	5	4	3	6	12	5
DE	73	46	54	56	61	98	101	101	117
EE	0	1	1	0	2	4	2	2	4
IE	3	10	7	5	9	2	5	9	8
EL	19	23	23	27	19	35	38	38	40
ES	42	43	32	27	30	59	66	70	83
FR	77	85	66	68	74	95	102	152	170
HR	11	6	5	6	13	14	7	7	11
IT	76	121	82	68	70	76	84	110	133
CY	1	2	1	1	0	1	3	2	1
LV	6	1	5	0	5	2	6	4	3
LT	7	3	8	3	4	2	6	8	5
LU	1	0	0	1	0	0	2	2	0
HU	13	12	14	7	7	15	29	23	38
MT	0	2	0	0	2	1	2	0	3
NL	15	14	4	11	11	17	22	17	21
AT	8	5	10	5	8	10	20	19	25
PL	49	56	48	61	52	78	147	101	101
PT	14	16	13	6	6	11	23	13	29
RO	43	54	39	38	24	39	77	75	66
SI	2	3	5	1	0	2	7	4	4
SK	7	4	7	8	13	10	24	11	16
FI	8	7	14	9	3	9	4	17	6
SE	6	7	9	3	5	6	9	10	6
UK	55	44	35	49	30	49	53	77	57
EU	583	606	543	503	488	691	923	965	1.040
%	2,3%	2,3%	2,1%	2,0%	1,9%	2,7%	3,6%	3,7%	4,0%
IS	1	0	0	0	1	0	0	2	1
NO	8	2	8	2	2	0	5	4	4
CH	6	2	4	4	3	5	13	9	13

Source: CARE (EU road accidents database) or national publications

Last update: April 2018

Table 48: Number of fatalities by hour of day (09-16) by country, 2016

	09	10	11	12	13	14	15	16
BE	28	28	28	22	28	32	36	30
BG	29	23	33	31	45	38	32	48
CZ	25	20	20	23	31	44	40	39
DK	9	8	18	9	10	16	12	16
DE	143	148	167	177	220	248	242	202
EE	1	0	1	7	1	3	2	7
IE	10	5	9	9	8	10	9	9
EL	37	41	37	30	33	30	54	33
ES	90	69	108	113	111	92	78	102
FR	154	165	161	152	132	165	231	244
HR	8	12	8	11	10	12	16	18
IT	158	167	157	173	156	162	147	187
CY	1	2	2	2	2	2	1	2
LV	2	4	6	8	4	5	7	4
LT	6	8	12	13	15	8	4	15
LU	1	0	0	0	2	2	2	6
HU	28	33	22	27	22	36	30	47
MT	2	1	0	0	0	1	0	0
NL	22	21	38	25	32	50	38	37
AT	19	16	17	21	23	30	32	37
PL	109	118	169	116	127	168	175	217
PT	29	21	18	31	24	27	36	32
RO	70	71	65	76	81	90	92	86
SI	4	1	8	10	7	10	7	9
SK	16	6	20	14	16	21	17	22
FI	7	17	20	11	13	16	19	14
SE	10	12	11	18	21	20	17	19
UK	72	87	95	95	101	101	100	121
EU	1.090	1.104	1.250	1.224	1.275	1.439	1.476	1.603
%	4,2%	4,3%	4,8%	4,7%	4,9%	5,6%	5,7%	6,2%
IS	0	1	0	3	2	1	2	2
NO	4	4	6	9	6	6	10	11
CH	7	10	12	10	8	15	15	15

Source: CARE (EU road accidents database) or national publications
Last update: April 2018

Table 49: Number of fatalities by hour of day (17-24) by country, 2016

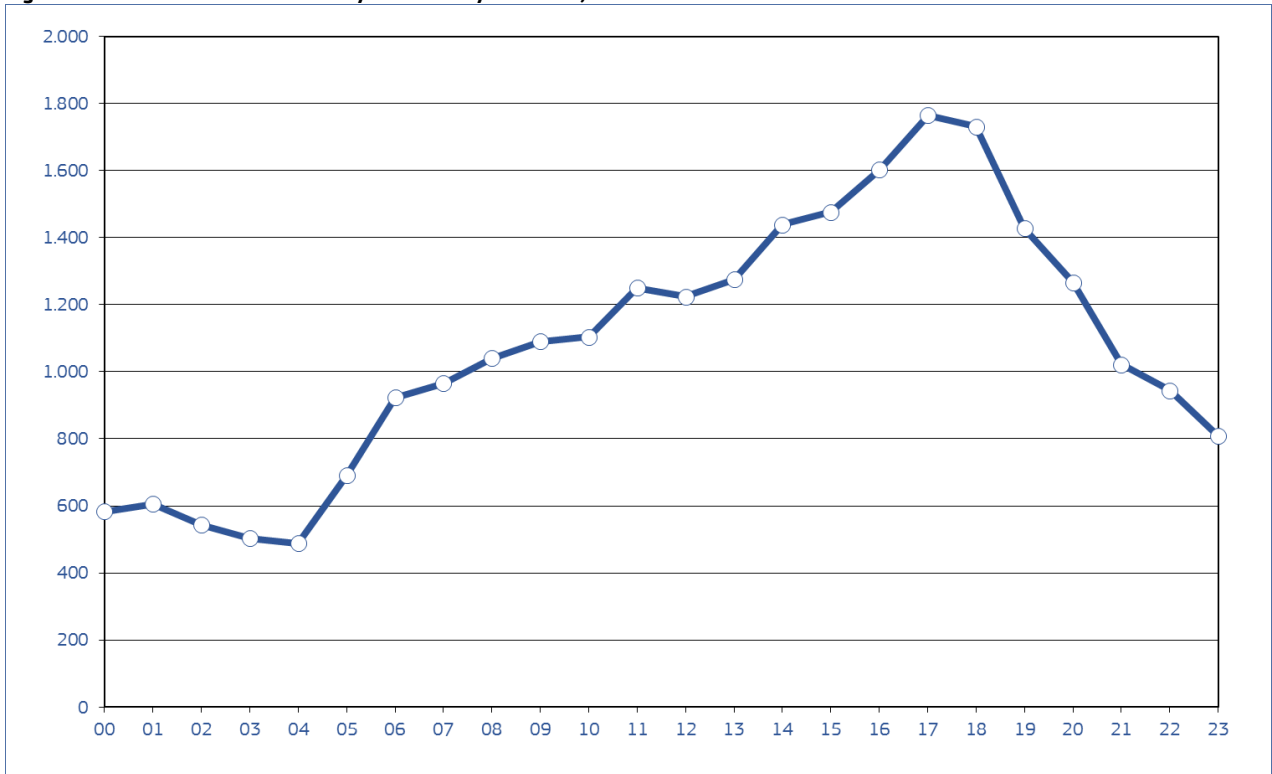
	17	18	19	20	21	22	23	Un-known	Total
BE	29	41	35	38	28	23	21	0	637
BG	46	59	45	28	42	24	27	0	708
CZ	37	48	33	29	15	14	21	5	611
DK	13	10	8	11	10	7	11	0	211
DE	258	186	143	109	74	90	92	0	3.206
EE	6	3	5	8	1	2	4	0	67
IE	13	16	8	12	8	5	4	0	193
EL	35	42	44	53	37	27	29	0	824
ES	100	109	103	97	79	62	45	0	1.810
FR	257	242	163	144	95	140	137	0	3.471
HR	24	23	20	19	20	13	13	0	307
IT	180	216	206	186	126	114	125	3	3.283
CY	5	1	3	7	3	0	1	0	46
LV	16	11	10	19	11	6	7	6	158
LT	36	31	19	7	14	3	5	0	242
LU	2	4	1	2	2	2	0	0	32
HU	37	42	35	24	24	19	23	0	607
MT	1	4	1	1	2	0	0	0	23
NL	27	31	29	13	14	14	10	0	533
AT	29	28	15	19	13	17	6	0	432
PL	239	222	172	156	150	129	66	0	3.026
PT	40	35	36	33	26	22	22	0	563
RO	158	141	144	127	109	103	45	0	1.913
SI	11	5	8	9	7	3	3	0	130
SK	27	32	22	19	13	9	13	4	371
FI	14	11	11	7	5	9	7	0	258
SE	10	17	11	7	13	8	9	6	270
UK	115	121	98	83	81	79	62	0	1.860
EU	1.765	1.731	1.428	1.267	1.022	944	808	24	25.792
%	6,8%	6,7%	5,5%	4,9%	4,0%	3,7%	3,1%	0,1%	100,0%
IS	1	0	0	0	0	1	0	0	18
NO	10	4	12	4	2	6	6	0	135
CH	14	7	14	13	4	6	7	0	216

Source: CARE (EU road accidents database) or national publications

Last update: April 2018

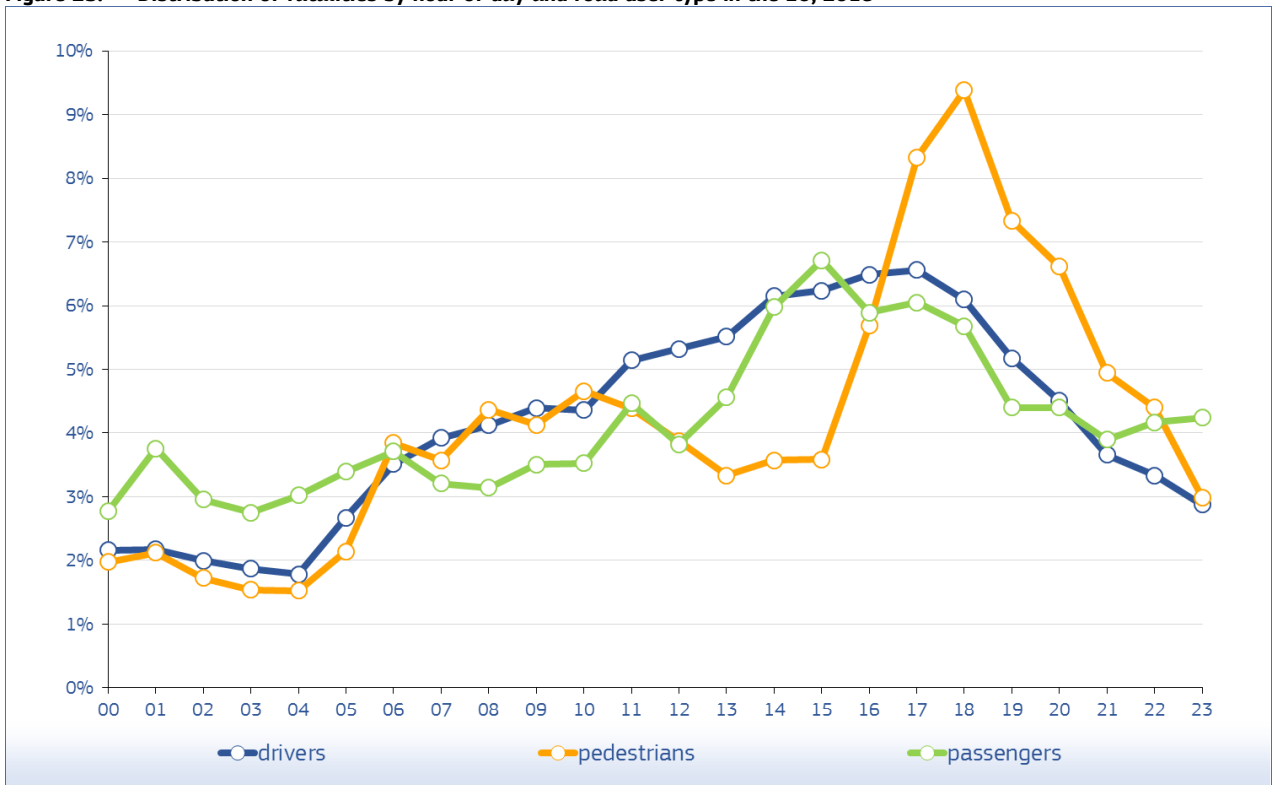
Annual Accident Report 2018

Figure 24: Number of fatalities by hour of day in the EU, 2016



Source: CARE (EU road accidents database) or national publications
 Last update: April 2018

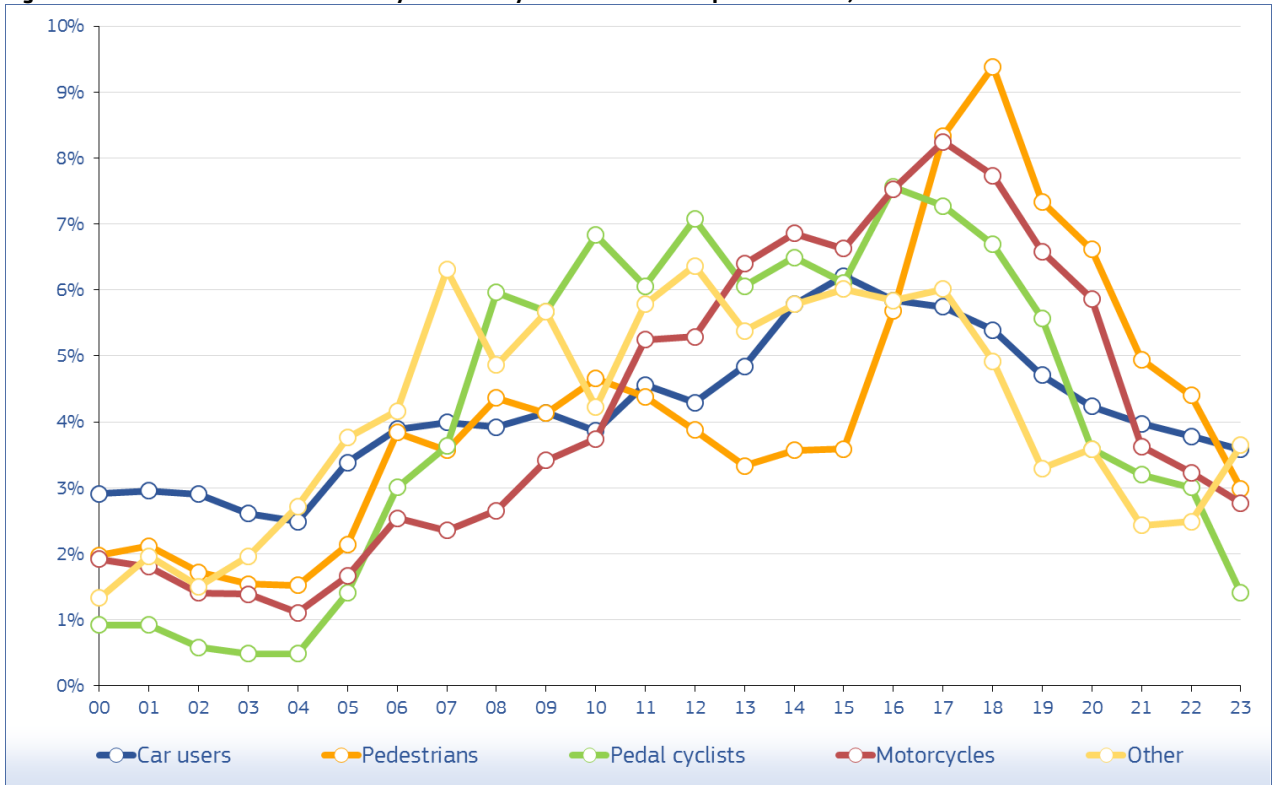
Figure 25: Distribution of fatalities by hour of day and road user type in the EU, 2016



Source: CARE (EU road accidents database) or national publications
 Last update: April 2018

Annual Accident Report 2018

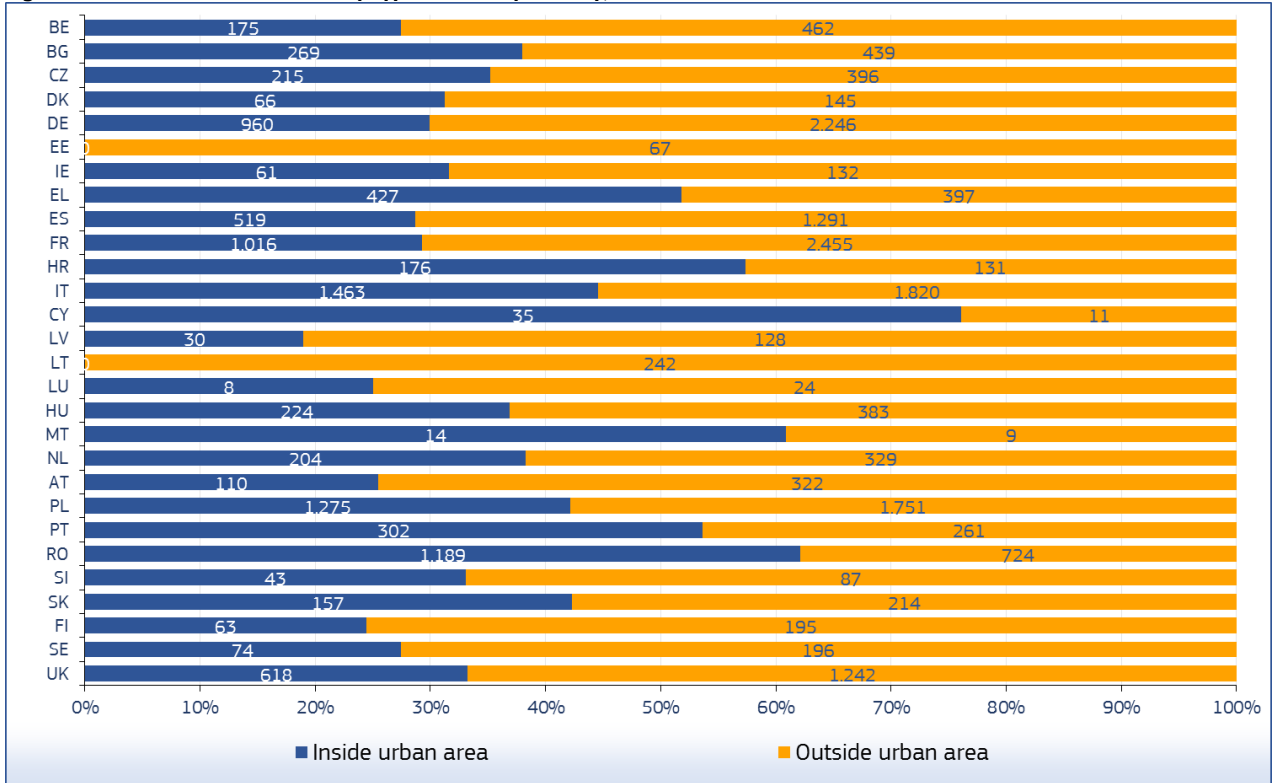
Figure 26: Distribution of fatalities by hour of day and mode of transport in the EU, 2016



Source: CARE (EU road accidents database) or national publications
 Last update: April 2018

4.3.2 Type of area/road

Figure 27: Number of fatalities by type of area by country, 2016



Source: CARE (EU road accidents database) or national publications
 Last update: April 2018

Annual Accident Report 2018

Table 50: Number of fatalities by type of area and road by country, 2016

	Inside urban area		Outside urban area			Total
		motorway	no motorway	unknown		
BE	175	95	322	45	637	
BG	269	60	379	-	708	
CZ	215	40	356	-	611	
DK	66	25	120	-	211	
DE	960	393	1.853	-	3.206	
EE	-	-	-	67	67	
IE	61	5	127	0	193	
EL	427	45	352	-	824	
ES	519	327	964	-	1.810	
FR	1.016	267	2.188	-	3.471	
HR	176	34	97	-	307	
IT	1.463	274	1.546	-	3.283	
CY	35	1	10	-	46	
LV	30	0	128	-	158	
LT	-	-	-	242	242	
LU	8	5	19	0	32	
HU	224	37	346	-	607	
MT	14	0	9	0	23	
NL	204	77	239	13	533	
AT	110	34	288	-	432	
PL	1.275	50	1.701	-	3.026	
PT	302	38	223	-	563	
RO	1.189	26	698	-	1.913	
SI	43	25	62	-	130	
SK	157	14	200	-	371	
FI	63	7	188	-	258	
SE	74	17	168	11	270	
UK	618	88	1.086	68	1.860	
EU	9.693	1.984	13.669	446	25.792	
%	37,6%	7,7%	53,0%	1,7%	100,0%	
IS	5	-	13	-	18	
NO	27	-	107	1	135	
CH	88	19	109	-	216	

Source: CARE (EU road accidents database) or national publications

Last update: April 2018

4.3.3 Type of junction

Table 51: Number of fatalities by type of junction by country, 2016

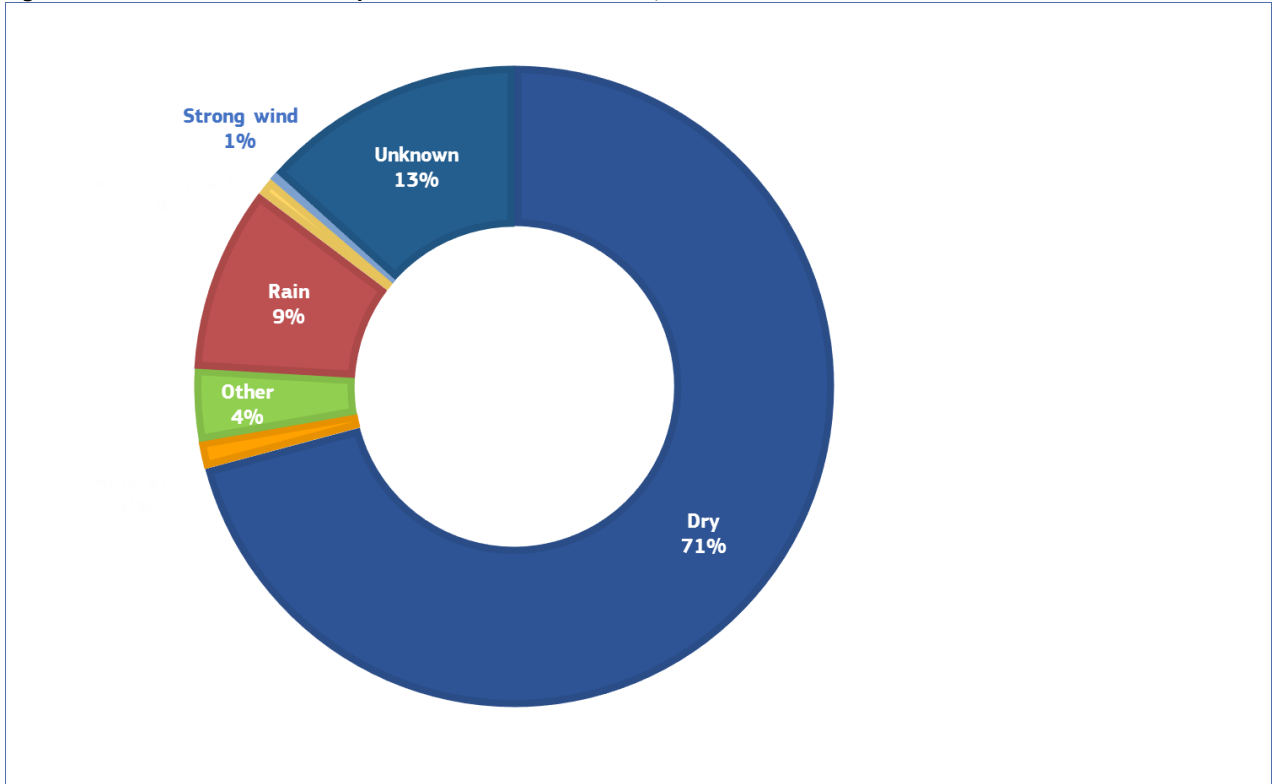
	Not at a junction	Junction Type					Unknown	Total	
		at-grade - crossroad	at-grade - multiple junction	at-grade - roundabout	at-grade - T or staggered junction	not at grade (interchange) other			
BE	510	0	0	3	0	0	80	42	635
BG	639	0	0	0	0	8	2	59	708
CZ	486	48	0	1	55	0	1	0	591
DK	151	22	0	1	29	0	6	2	211
DE	2.491	0	0	0	0	0	0	715	3.206
EE	0	0	0	0	0	0	49	18	67
IE	0	7	0	2	21	0	5	158	193
EL	779	0	0	0	0	0	0	45	824
ES	1.421	135	1	66	143	0	34	0	1.800
FR	2.985	191	8	43	173	0	57	0	3.457
HR	261	22	0	1	22	0	0	0	306
IT	2.523	326	0	78	355	0	0	0	3.282
CY	36	2	0	0	7	0	1	0	46
LV	151	0	0	0	0	0	7	0	158
LT	214	0	0	0	0	0	0	28	242
LU	28	1	0	2	1	0	0	0	32
HU	492	69	2	4	37	0	3	0	607
MT	18	1	0	0	2	0	0	2	23
NL	375	132	0	7	0	0	1	16	531
AT	347	53	0	0	7	0	9	0	416
PL	2.513	0	0	7	0	0	475	0	2.995
PT	471	29	0	4	44	10	1	4	563
RO	1.706	190	0	0	0	0	0	0	1.896
SI	120	0	0	0	0	0	0	8	128
SK	324	17	-	2	25	-	0	3	371
FI	216	0	0	0	0	0	0	34	250
SE	204	46	0	8	0	5	7	0	270
UK	1.234	85	3	52	378	0	108	0	1.860
EU	20.695	1.376	14	281	1.299	23	846	1.134	25.668
%	80,6%	5,4%	0,1%	1,1%	5,1%	0,1%	3,3%	4,4%	100,0%
IS	15	0	-	0	3	0	-	-	18
NO	0	-	-	-	-	-	-	135	135
CH	0	9	-	-	24	-	0	183	216

Source: CARE (EU road accidents database) or national publications

Last update: April 2018

4.3.4 Weather conditions

Figure 28: Number of fatalities by weather conditions in the EU, 2016



Source: CARE (EU road accidents database) or national publications
Last update: April 2018017

Annual Accident Report 2018

Table 52: Number of fatalities by weather conditions by country, 2016

	Dry	Fog or mist	Other	Rain	Snow, sleet, hail	Strong wind	Unknown	Total
BE	484	3	6	76	6	4	58	637
BG	632	9	0	56	11	0	0	708
CZ	509	9	5	69	18	1	0	611
DK	173	7	2	22	0	0	7	211
DE	0	16	43	0	0	3	3.144	3.206
EE	64	0	0	3	0	0	0	67
IE	142	2	0	48	1	0	0	193
EL	729	2	24	64	0	3	2	824
ES	1.524	27	0	137	7	5	110	1.810
FR	2.868	96	28	432	23	24	0	3.471
HR	276	5	0	26	0	0	0	307
IT	2.723	48	223	283	1	5	0	3.283
CY	45	0	1	0	0	0	0	46
LV	132	2	0	17	7	0	0	158
LT	200	0	0	21	15	0	2	238
LU	26	0	0	6	0	0	0	32
HU	530	13	5	54	3	2	0	607
MT	16	0	0	1	0	0	6	23
NL	450	5	0	49	1	1	27	533
AT	380	6	0	38	7	1	0	432
PL	1.838	49	572	467	68	32	0	3.026
PT	474	8	0	80	0	1	0	563
RO	1.690	25	0	173	19	6	0	1.913
SI	110	0	0	9	1	0	0	120
SK	291	5	8	47	16	0	3	370
FI	206	6	0	12	12	0	22	258
SE	217	5	0	15	13	0	20	270
UK	1.534	13	31	213	5	24	40	1.860
EU	18.263	361	948	2.418	234	112	3.441	25.777
%	70,8%	1,4%	3,7%	9,4%	0,9%	0,4%	13,3%	100,0%
IS	12	0	0	1	2	0	3	18
NO	68	1	29	13	5	0	19	135
CH	193	0	4	17	2	0	0	216

Source: CARE (EU road accidents database) or national publications
Last update: April 2018

5 Glossary

The CARE glossary provides short definitions for variables used in the Annual Statistical Report, and includes short definitions of CARE common values.

The glossary has two components:

- a) A **definition** of the common value
- b) The **availability** of the common value in the data file for each Member State.

ACCIDENT

ACCIDENT

Definition: Occurs on a public road. Occurs on a private road to which the public has right of access (except BE, NL, PT). Involves at least one moving vehicle (except UK, PT). Involves at least one injured or killed person. Is reported by the police. Self reporting possible (BE, UK, EL, IT, IE). Self reporting not possible (DK, FI, NL, AT, PT). Confirmed suicides excluded (BE, UK, IE, NL, AT, DK, PT). Confirmed suicides included (ES, IT, LU).

Note: The variation in the groups of road and the coverage of the injury categories included in injury accidents, together with differences in the level of self reported accidents, will lead to significant variations in the number of injury accidents reported, and their reporting rate, between Member States.

FATAL ACCIDENT

Definition: Accident with at least one killed person regardless the injury severity of any other involved persons.

Note: See “killed” definition from Injury Severity defined in Person type item (Death within 30 days of a road accident [UN/ECE Geneva 1995 – Statistics of Road Traffic Accidents in Europe and North America], except AT [3 days before 1992], ES [24 hours in CARE; 24 hours before 1993 in publication], FR [6 days], EL [24 hours], IT [7 days], PT [24 hours]. Suicide not included [except DK, ES, FR]. Natural death not included [except LU, SE]).

Data availability: All countries

TIME TYPE ITEMS

MONTH

Definition: Calendar month

Data availability: All countries (except DK)

HOURLY

Definition: Period of 60 minutes. Rounded down to whole hours (except EL, ES, IT: rounded to nearest hour).

Note: Winter time is:

- GMT from November to March (DE from 1996 onwards, GB, IE, NI, PT)
- GMT +1 hour from October to March (BE, AT, DK prior to 1996, DK, ES, FR, IT, LU, NL, SE)
- GMT +2 hours from October to March (EL, FI).

Summer time is one hour ahead of winter time:

- GMT +1 hour from April to October (DK from 1996 onwards, GB, IE, NI, PT)
- GMT +2 hours from April to September (AT, BE, DK prior to 1996, DK, ES, FR, IT, LU, NL, SE)
- GMT +3 hours from April to September (EL, FI)

For PT, unknown hour coded as '12' during daytime and '0' during night time

Data availability: All countries (except DK)

DAY OF WEEK

Definition: 24 hour day within 7 day week.

Note: Data calculated by the CARE system from the date of accident, where data is not available in national files (AT from 1992 onwards, BE, FR prior to 1993, PT, SE).

Data availability: All countries.

ROAD USER TYPE

DRIVER

Definition: Person driving or riding any motorised vehicle or pedal cycle. Person herding animals is not a driver (except BE, AT). Learner driver is a driver (except ES, PT). Learner driver is a driver during a driving test, but not in a driving lesson (DK). Driving instructor is not a driver (except ES, PT). Driving instructor is a driver during a driving lesson, but not during a driving test (DK).

Note: Uninjured drivers are included in the database (except GB, NI, NL: implicitly included in vehicle records only). Data on driving instructors and learner drivers collected separately from 1993 onwards (SE).

Data availability: All countries.

PASSENGER

Definition: Person on or in a vehicle, who is not the driver. Includes person in the act of boarding or alighting from a vehicle (except DK). Learner driver is not a passenger (except ES, PT). Learner driver is a passenger during a driving lesson, but not during a driving test (DK). Driving instructor is a passenger (except ES, PT). Driving instructor is a passenger during a driving test, but not in a driving lesson (DK).

Note: Uninjured passengers not included in the database (except FR, IE, LU; ES, FI in some cases, AT).

Data availability: All countries.

PEDESTRIAN

Definition: Person on foot. Person pushing or holding bicycle (except DK). Person pushing a pram or pushchair. Person leading or herding an animal (except DK, AT). Person riding a toy cycle on the footway (except AT). Person on roller skates, skateboard or skis (except AT). Does not include person in the act of boarding or alighting from a vehicle (except DK, ES).

Note: Uninjured pedestrians not included in the database (except BE, IE, LU, NL implicitly included in element records; DK, FR, FI, AT, SE if they caused the accident; ES not consistently).

Data availability: All countries.

TYPE OF INJURY

INJURED

Definition: Injured with application of correcting coefficient as stated for the 'Killed at 30 days'. Injured in a road accident. Hospitalisation or medical treatment not necessarily required (except FR). Self declaration of injury (DK if slight; FI, GB, IT, IE, NI). Opinion of the police. Aggregation of the following injury severities: SERIOUSLYINJUREDASREPORTED + SLIGHTLY INJURED + INJURED - 1 COEFFICIENT

Data availability: All countries

FATALITIES

Definition: Death within 30 days of a road accident (UN/ECE Geneva 1995 – Statistics of Road Traffic Accidents in Europe and North America, annex 1). Suicide not included (except DK, ES, FR). Natural death not included (except LU, SE). Corrective factors have been applied to comply with this international definition for the following countries: EL (24 hours), ES (24 hours in CARE; 24 hours before 1993 in publication), FR (6 days), IT (7 days), AT (3 days before 1992), PT (24 hours).

Data availability: All countries.

Member State	Correcting factors		
Greece	K(30) = K * 1,18 up to 1995		
Spain	K(30) = K * 1,3 up to 1992		
	1993 up to 1996:	Outside urban area	Inside urban area
	Driver	K(30)=K+SI*2,46%	K(30)=K+SI*1,02%
	Passenger	K(30)=K+SI*2,29%	K(30)=K+SI*0,94%
	Pedestrian	K(30)=K+SI*7,22%	K(30)=K+SI*3,87%
	1997 up to 2000:	Outside urban area	Inside urban area
	Driver	K(30)=K+SI*2,44%	K(30)=K+SI*1,93%
	Passenger	K(30)=K+SI*2,17%	K(30)=K+SI*1,80%
	Pedestrian	K(30)=K+SI*4,76%	K(30)=K+SI*5,71%
	2001 up to 2004:	Outside urban area	Inside urban area
	Driver	K(30)=K+SI*2,41%	K(30)=K+SI*2,17%
	Passenger	K(30)=K+SI*2,24%	K(30)=K+SI*2,15%
Pedestrian	K(30)=K+SI*6,17%	K(30)=K+SI*4,34%	
France	K(30) = K * 1,09 up to 1993 K(30) = K * 1,057 from 1994 onwards		
Italy	K(30) = K * 1,078		
Austria	K(30) = K * 1,12 only for 1991		
Portugal	K(30) = K * 1,3 up to 1997 K(30) = K * 1,14 from 1998 onwards		
K: number of persons killed, SI: number of persons seriously injured			

GENDER

FEMALE

Definition: Determined by the police (except ES, IT, LU, AT, PT: on the basis of identity documents; DK, FI, SE: on the basis of personal ID number).

Data availability: All countries.

MALE

Definition: Determined by the police (except ES, IT, LU, AT, PT: on the basis of identity documents; DK, FI, SE: on the basis of personal ID number).

Data availability: All countries.

AGE

AGE

Definition: Length of life of person. Rounded down to whole number of years (except EL, IT, NI: rounded to nearest year).

Note: Age 0 to 1 is exceptionally rounded up (FR, IT, IE, LU, NI, PT). Age over 99 only available for ES, FR (1993 on), NL.

Data availability: All countries.

AREA TYPE

INSIDE URBAN AREA

Definition: Area inside urban area boundary signs (except IE, UK). Includes dual carriageways and national roads. Can include motorways (except DK, EL, IT). Opinion of the police (DK, SE).

Note: Data approximated from speed limit of 40 mph or less (IE, UK).

Data availability: All countries.

OUTSIDE URBAN AREA

Definition: Area outside urban area boundary signs. Opinion of the police (DK, SE). Includes motorways.

Note: Data approximated from speed limit of over 40 mph (IE, UK).

Data availability: All countries.

MOTORWAY

Definition: Public road with dual carriageways, and at least two lanes each way. Entrance and exit signposted. Road with grade separated interchanges. Road with a central barrier or central reservation. No crossing permitted. No stopping permitted unless in an emergency. Entry prohibited for pedestrians, animals, pedal cycles, mopeds, agricultural vehicles; learner drivers (BE, GB, EL, IE, NI, PT). Access restricted to motor vehicles (DK, FI, AT). Minimum speed between 50 km/h and 80 km/h (except FR, UK). Maximum speed between 100 km/h and 130 km/h (except DK recommended 130 km/h).

Data availability: All countries.

MODES OF TRANSPORT-VEHICLE GROUP

AGRICULTURAL TRACTOR

Definition: Motor vehicle for agricultural use, with wheels or caterpillar tracks, with at least two axles. Driving licence required (DK, EL, ES, FI, GB, IT, IE, LU, AT; not in FR). Maximum speed 30 km/h or 40 km/h.

Data availability: All countries (except DK prior to 1997, AT, FR, GB, IE from 1996 onwards, LU).

Value included in another value:

agricultural machine (FR), construction or agricultural machine (DK, AT prior to 1997), agricultural or industrial tractor (LU), other motor vehicle (GB), other (IE from 1996 onwards).

BUS OR COACH

Definition:

Motor vehicle with at least four wheels, used for transporting people. Public or private use. Type D driving licence required (BE, GB, IE, NI). Includes bus, more than 8 and 16 seats, minibus, trolley-bus (except LU), scheduled bus, unscheduled bus, school bus.

Data availability:

All countries.

CAR OR TAXI

Definition:

Includes car, taxi. Motor vehicle with four wheels. Used to transport only or mainly people. Seating for no more than 8 passengers. Type B driving licence required. Includes taxi-bus (NL).

Data availability:

All countries.

HEAVY GOODS VEHICLE

Definition:

Includes road tractor, road tractor with semi trailer, lorry over 3,5 tonnes. Motor vehicle with at least four wheels, with a permissible gross vehicle weight of over 3,5 tonnes, used only for the transport of goods. With or without a trailer. Type C driving licence required. Includes lorry, over 3,5 tonnes ; road tractor ; road tractor with semi-trailer ; lorry with trailer ; tanker (except FI).

Note:

Lorries cannot systematically be categorised as over 3,5 tonnes (DK, IT).

Data availability:

All countries (except DE, IT).

LORRY, LESS THAN 3,5 TONNES

Definition:

Motor vehicle with a permissible gross vehicle weight of less than 3,5 tonnes, used only for the transport of goods. Type B driving licence required.

Note:

Lorries cannot systematically be categorised as less than 3,5 tonnes (DK, IT).

Data availability:

All countries (except DK, IT, LU).

MOPED

Definition:

Motor vehicle with two wheels, with an engine size of less than 50 cc. Design speed between 25 km/h and 50 km/h. One or two seats. Minimum age for driver between 14 and 18 (except IT). No driving licence required (ES, FR, FI, GB, IT, PT, SE). Unregistered vehicle (BE, DK, ES, FR, SE).

Data availability:

All countries (except IE from 1996 onwards).

Value included in another value:

Two wheeled motor vehicle (IE from 1996 onwards).

MOTORCYCLE

Definition:

Motor vehicle with two or three wheels (not three wheeled in DK), with an engine size of more than 50 cc. With a trailer possible (except DK). With a sidecar possible. Registered vehicle (except PT). Type A driving licence required. Includes motor scooter (except FR).

Data availability:

All countries (except IE from 1996 onwards).

Value included in another value: two wheeled motor vehicle (IE from 1996 onwards).

OTHER VEHICLE

Definition: Includes other non-motor vehicle, other motor vehicle.

PEDAL CYCLE

Definition: Vehicle with at least two wheels, without engine, moved by pedals or hand cranks. With or without a trailer. With or without passengers. Ridden in the carriageway. Ridden on the pavement (except DK, LU).

Data availability: All countries.

PEDESTRIAN

Definition: Wherever a person's person class has been identified as being pedestrian, its vehicle type is "pedestrian". This as opposed to older version of CARE where a pedestrian didn't have a vehicle type.

Data availability: All countries.

JUNCTION TYPE

JUNCTION

Definition: Road intersection with three or more arms. Not grade separated. Includes t junction, y junction, crossroad, level crossing (except DK, FI, GB, NI), roundabout (except FR), multiple junction.

Data availability: All countries (except EL).

CROSSROAD

Definition: Road intersection with four arms. Opinion of the police (DK, ES, FI; not AT).

Data availability: All countries (except BE, EL).

NOT AT A JUNCTION

Definition: Position on road more than 20m from a junction or roundabout (GB, IE, NI, NL, AT). Position on road more than 50m from a junction (FR). Opinion of the police (BE, DK, ES, FI, IT, LU, SE).

Data availability: All countries (except EL).

ROUNDABOUT

Definition: Circular highway. Includes sections of the road leading into it, within 20m (GB, IE, NI, AT). Opinion of the police (DK, ES, FR, IT).

Data availability: All countries (except BE, DK, EL, FI, LU, PT).

T OR Y JUNCTION

Definition: Road intersection with three arms. Includes t junction, y junction, staggered junction.

Data availability: All countries (except BE, EL, FI, IT, PT).

6 List of tables

Table 1:	Annual number of injury accidents by country, 2006-2015	7
Table 2:	Annual number of fatalities by country, 2006-2015	10
Table 3:	Annual number of fatal accidents by country, 2006-2015	13
Table 4:	Annual number of pedestrian fatalities by country, 2006-2015	17
Table 5:	Annual number of pedal cyclist rider and passenger fatalities by country, 2006-2015	18
Table 6:	Annual number of moped rider and passenger fatalities by country, 2006-2015	19
Table 7:	Annual number of motorcycle rider and passenger fatalities by country, 2006-2015	20
Table 8:	Annual number of car and taxi driver and passenger fatalities by country, 2006-2015	22
Table 9:	Annual number of heavy goods vehicles >3,5t fatalities by country, 2006-2015	23
Table 10:	Annual number of lorries <3,5t fatalities by country, 2006-2015	24
Table 11:	Annual number of buses or coaches fatalities by country, 2006-2015	25
Table 12:	Annual number of fatalities by age group by country, 2006-2007	28
Table 13:	Annual number of fatalities by age group by country, 2008-2009	29
Table 14:	Annual number of fatalities by age group by country, 2010-2011	30
Table 15:	Annual number of fatalities by age group by country, 2012-2013	31
Table 16:	Annual number of fatalities by age group by country, 2014-2015	32
Table 17:	Annual number of female fatalities by country, 2006-2015	33
Table 18:	Annual number of male fatalities by country, 2006-2015	34
Table 19:	Annual number of female fatalities as drivers by country, 2006-2015	36
Table 20:	Annual number of male fatalities as drivers by country, 2006-2015	37
Table 21:	Annual number of female fatalities as passengers by country, 2006-2015	38
Table 22:	Annual number of male fatalities as passengers by country, 2006-2015	39
Table 23:	Annual number of female fatalities as pedestrians by country, 2006-2015	40
Table 24:	Annual number of male fatalities as pedestrians by country, 2006-2015	41
Table 25:	Number of total fatalities by age group by country, 2015	42
Table 26:	Number of female fatalities by age group by country, 2015	43
Table 27:	Number of male fatalities by age group by country, 2015	44
Table 28:	Number of pedestrian fatalities by age group by country, 2015	45
Table 29:	Number of pedal cyclist fatalities by age group by country, 2015	46
Table 30:	Number of moped rider and passenger fatalities by age group by country, 2015	47
Table 31:	Number of motorcycle rider and passenger fatalities by age group by country, 2015	48
Table 32:	Number of car driver and passenger fatalities by age group by country, 2015	49
Table 33:	Number of fatalities by mode of transport and type of area by country (part 1), 2015	51
Table 34:	Number of fatalities by mode of transport and type of area by country (part 2), 2015	52
Table 35:	Number of fatalities by month by country (January to June), 2015	55
Table 36:	Number of fatalities by month by country (July to December), 2015	56
Table 37:	Number of driver fatalities by month by country (January to June), 2015	57
Table 38:	Number of driver fatalities by month by country (July to December), 2015	58
Table 39:	Number of passenger fatalities by month by country (January to June), 2015	59
Table 40:	Number of passenger fatalities by month by country (July to December), 2015	60
Table 41:	Number of pedestrian fatalities by month by country (January to June), 2015	61
Table 42:	Number of pedestrian fatalities by month by country (July to December), 2015	62
Table 43:	Total number of fatalities by day of week by country, 2015	64
Table 44:	Number of fatalities by day of week by country, 2015 (drivers)	65
Table 45:	Number of fatalities by day of week by country, 2015 (passengers)	66
Table 46:	Number of fatalities by day of week by country, 2015 (pedestrians)	67
Table 47:	Number of fatalities by hour of day (00-08) by country, 2015	68
Table 48:	Number of fatalities by hour of day (09-16) by country, 2015	69
Table 49:	Number of fatalities by hour of day (17-24) by country, 2015	70
Table 50:	Number of fatalities by type of area and road by country, 2015	74
Table 51:	Number of fatalities by type of junction by country, 2015	75
Table 52:	Number of fatalities by weather conditions by country, 2015	77

7 List of figures

Figure 1:	Annual number of fatalities, injury accidents and injured people in the EU, 2006-2015	5
Figure 2:	Fatalities per million inhabitants in the EU, 2015 compared to 2006	6
Figure 3:	Percentage change in number of fatalities and injury accidents by country, 2015 and 2006	6
Figure 4:	Annual number of injury accidents by country (part 1), 2006-2015	8
Figure 5:	Annual number of injury accidents by country (part 2), 2006-2015	8
Figure 6:	Annual number of injury accidents by country (part 3), 2006-2015	9
Figure 7:	Annual number of injury accidents by country (part 4), 2006-2015	9
Figure 8:	Annual number of fatalities by country (part 1), 2006-2015	11
Figure 9:	Annual number of fatalities by country (part 2), 2006-2015	11
Figure 10:	Annual number of fatalities by country (part 3), 2006-2015	12
Figure 11:	Annual number of fatalities by country (part 4), 2006-2015	12
Figure 12:	Share of fatalities by area type in the EU, 2015	14
Figure 13:	Distribution of male and female fatalities by road user type in the EU, 2015	14
Figure 14:	Distribution of fatalities by mode of transport in the EU, 2015	15
Figure 15:	Percentage change in number of fatalities by mode of transport in the EU, 2015 and 2006	16
Figure 16:	Annual number of fatalities by mode of transport (drivers and passengers, vulnerable modes) in the EU, 2006-2015	21
Figure 17:	Annual number of drivers and passengers fatalities by mode of transport in the EU, 2006-2015	26
Figure 18:	Increase/decrease of number of fatalities by gender in the EU, 2015 and 2006	27
Figure 19:	Annual distribution of fatalities by gender in the EU, 2006-2015	35
Figure 20:	Fatalities by type of area and mode of transport in the EU, 2015	50
Figure 21:	Number of fatalities by month in the EU, 2015	53
Figure 22:	Number of fatalities by month and road user type in the EU, 2015	54
Figure 23:	Total number of fatalities by day of week and road user type in the EU, 2015	63
Figure 24:	Number of fatalities by hour of day in the EU, 2015	71
Figure 25:	Distribution of fatalities by hour of day and road user type in the EU, 2015	71
Figure 26:	Distribution of fatalities by hour of day and mode of transport in the EU, 2015	72
Figure 27:	Number of fatalities by type of area by country, 2015	73
Figure 28:	Number of fatalities by weather conditions in the EU, 2015	76

