



# Traffic Safety Basic Facts 2018



# Motorways



## General

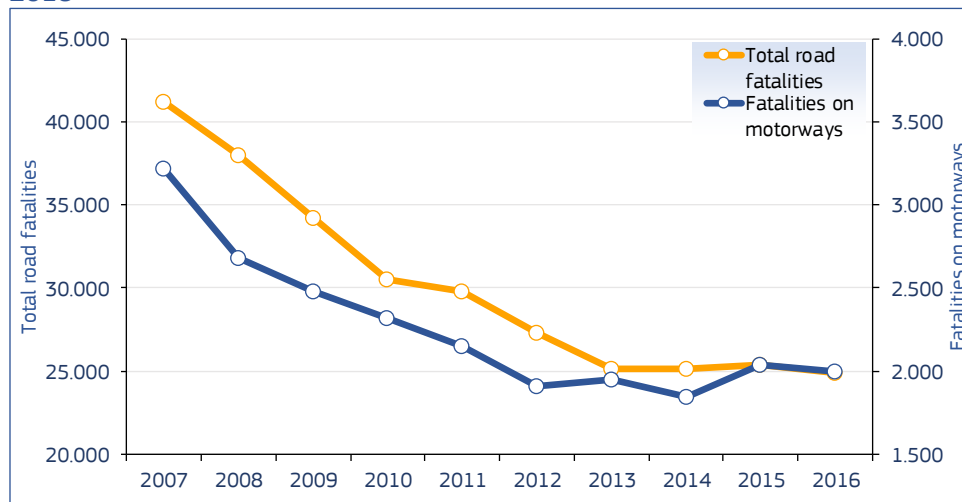
More than 22.500 people were killed in road accidents on motorways in the European Union countries between 2007 and 2016. This number corresponds to 8% of all road fatalities in those countries.

There were 3.221 road accident fatalities on motorways in 2007 and the number fell by 38% in 2016. The total number of road accident fatalities in the European Union countries also fell significantly over the same decade, by 41%.

Although the overall number of road fatalities decreased rather steadily, the trend for motorway fatalities has been more variable. However, a clear increase of 10% was recorded between 2014 and 2015 in the EU motorway fatalities.

The number of people killed in road accidents on motorways fell by 38% in the decade from 2007 to 2016.

**Figure 1: Number of fatalities on motorways and all road fatalities, EU, 2007-2016**



Source: CARE database, data available in May 2018

Table 1 provides an overview of the changes in the number of fatalities on motorways by country.

**Table 1: Number of fatalities on motorways by country, 2007-2016**

	2007	2008	2009	2010	2011	2012	2013	2014	2015	2016
<b>BE</b>	153	139	150	106	120	91	94	108	108	99
<b>BG</b>	-	38	36	40	38	21	25	42	61	-
<b>CZ</b>	48	30	25	28	21	22	25	25	32	42
<b>DK</b>	24	31	24	27	12	8	12	14	16	25
<b>DE</b>	602	495	475	430	453	387	428	375	414	393
<b>EE</b>	-	-	-	-	-	-	-	-	-	-
<b>IE</b>	10	2	4	9	9	5	8	5	-	-
<b>EL</b>	140	120	108	87	81	57	79	56	53	45
<b>ES</b>	618	496	465	418	341	304	294	290	277	327
<b>FR</b>	273	233	225	238	268	223	238	220	298	270
<b>HR</b>	65	67	43	33	23	43	41	23	18	34
<b>IT</b>	526	452	350	376	338	330	321	287	305	274
<b>CY</b>	13	8	7	9	7	3	2	3	6	1
<b>LV</b>	-	-	-	-	-	-	-	-	-	-
<b>LT</b>	-	-	-	-	-	-	-	-	-	-
<b>LU</b>	11	6	36	29	4	7	6	3	3	5
<b>HU</b>	61	54	38	44	49	31	30	27	34	37
<b>MT</b>	-	-	-	-	-	-	-	-	-	-
<b>NL</b>	83	83	83	64	43	68	59	57	81	77
<b>AT</b>	74	71	61	59	46	50	31	36	41	34
<b>PL</b>	53	35	43	28	37	44	40	56	61	50
<b>PT</b>	128	96	89	111	84	58	44	50	61	38
<b>RO</b>	41	21	25	18	16	17	24	21	19	26
<b>SI</b>	37	13	30	19	20	20	16	15	15	25
<b>SK</b>	19	14	9	14	-	-	-	-	-	-
<b>FI</b>	14	9	12	4	11	13	8	8	6	7
<b>SE</b>	25	18	21	24	20	18	21	31	15	24
<b>UK</b>	185	160	132	118	106	89	102	96	111	96
<b>EU</b>	<b>3.221</b>	<b>2.677</b>	<b>2.482</b>	<b>2.319</b>	<b>2.147</b>	<b>1.909</b>	<b>1.948</b>	<b>1.848</b>	<b>2.040</b>	<b>1.995</b>
<b>Yearly change</b>		-16,9%	-7,3%	-6,6%	-7,4%	-11,0%	2,0%	-5,2%	10,4%	-2,2%
<b>CH</b>	47	27	34	23	22	63	23	12	21	19

Source: CARE database, data available in May 2018

Totals for EU include latest available data (Data for Estonia, Latvia, Lithuania and Slovakia not included in totals)

The reduction in motorway fatalities over the decade was highest in Portugal (70%).

Table 2 shows the percentages of road accident fatalities that occurred on motorways by country between 2007-2016. Slovenia had the highest percentage of fatalities on motorways in 2016 in the EU (19%), followed by Spain (18%) and Belgium (16%). By contrast, the lowest proportion of fatalities occurring on motorways was in Romania (1%), Finland (3%) and Poland (2%).

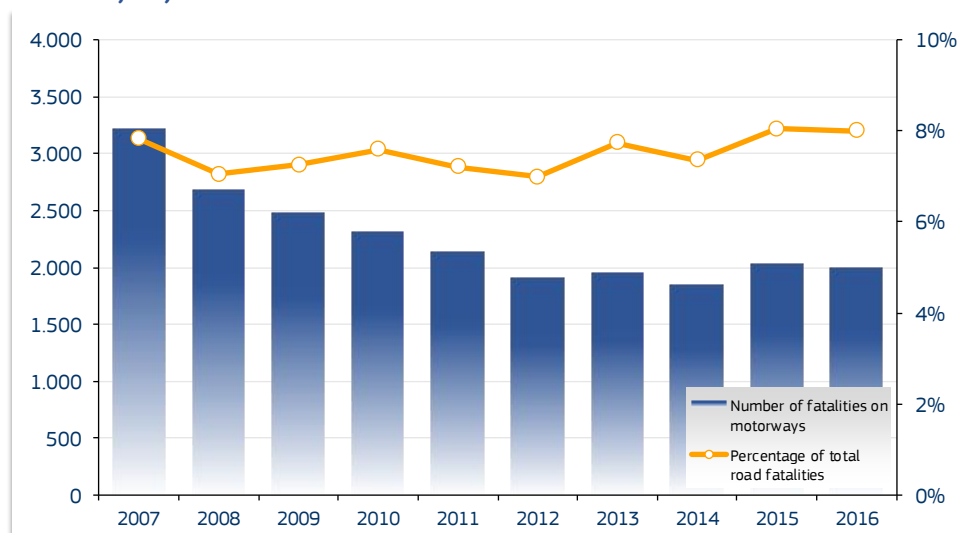
**Table 2: Percentage of fatalities on motorways of all road fatalities by country, 2007-2016**

	2007	2008	2009	2010	2011	2012	2013	2014	2015	2016
BE	14%	15%	16%	13%	14%	12%	13%	15%	15%	16%
BG	-	4%	4%	5%	6%	3%	4%	6%	9%	-
CZ	4%	3%	3%	3%	3%	3%	4%	4%	4%	7%
DK	6%	8%	8%	11%	5%	5%	6%	8%	9%	12%
DE	12%	11%	11%	12%	11%	11%	13%	11%	12%	12%
EE	-	-	-	-	-	-	-	-	-	-
IE	3%	1%	2%	4%	5%	3%	4%	3%	-	-
EL	9%	8%	7%	7%	7%	6%	9%	7%	7%	5%
ES	16%	16%	17%	17%	17%	16%	18%	17%	16%	18%
FR	6%	5%	5%	6%	7%	6%	7%	7%	9%	8%
HR	11%	10%	8%	8%	6%	11%	11%	7%	5%	11%
IT	10%	10%	8%	9%	9%	9%	9%	8%	9%	8%
CY	15%	10%	10%	15%	10%	6%	5%	7%	11%	2%
LV	-	-	-	-	-	-	-	-	-	-
LT	-	-	-	-	-	-	-	-	-	-
LU	24%	17%	75%	91%	12%	21%	13%	9%	8%	16%
HU	5%	5%	5%	6%	8%	5%	5%	4%	5%	6%
MT	-	-	-	-	-	-	-	-	-	-
NL	12%	12%	13%	12%	8%	12%	12%	12%	15%	14%
AT	11%	10%	10%	11%	9%	9%	7%	8%	9%	8%
PL	1%	1%	1%	1%	1%	1%	1%	2%	2%	2%
PT	13%	11%	11%	12%	9%	8%	7%	8%	10%	7%
RO	1%	1%	1%	1%	1%	1%	1%	1%	1%	1%
SI	13%	6%	18%	14%	14%	15%	13%	14%	13%	19%
SK	3%	2%	2%	4%	-	-	-	-	-	-
FI	4%	3%	4%	1%	4%	5%	3%	3%	2%	3%
SE	5%	5%	6%	9%	6%	6%	8%	11%	6%	9%
UK	6%	6%	6%	6%	5%	5%	6%	5%	6%	5%
<b>EU</b>	<b>8%</b>	<b>7%</b>	<b>7%</b>	<b>8%</b>	<b>7%</b>	<b>7%</b>	<b>8%</b>	<b>7%</b>	<b>8%</b>	<b>8%</b>
CH	12%	8%	10%	7%	7%	19%	9%	5%	8%	9%

Source: CARE database, data available in May 2018

Romania is the country with the lowest proportion of fatalities occurring on motorways in 2016.

**Figure 2a: Number of fatalities on motorways and percentage of all road fatalities, EU, 2007-2016**



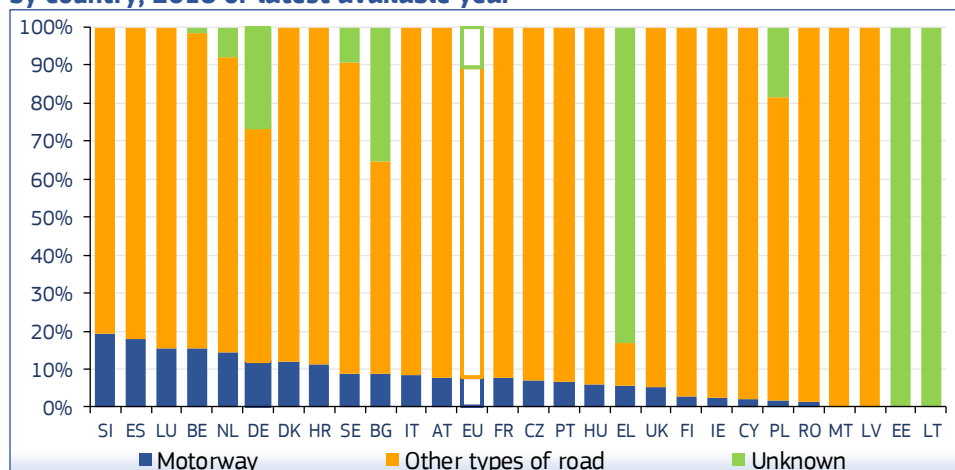
Source: CARE database, data available in May 2018

Note that in four countries (Germany, Bulgaria, Greece and Poland) a significant number of fatalities are recorded in the CARE data as being on non-specified road network type (it is not known whether or not they occurred on a motorway). In Estonia and Lithuania, there is no distinction of fatalities by road type.

# Traffic Safety Basic Facts 2018 - Motorways

Slovenia had the highest percentage of road accident fatalities on motorways (19%) in 2016.

**Figure 2b: Distribution of fatalities on motorways and on other types of roads by country, 2016 or latest available year**



Source: CARE database, data available in May 2018

Table 3 shows the rate of fatalities on motorways per million population between 2007 and 2016. The rate in 2016 was highest in Slovenia (12,1), while the average EU rate was 4 fatalities per million population.

**Table 3: Motorway fatality rates per million population by country, 2007-2016**

	2007	2008	2009	2010	2011	2012	2013	2014	2015	2016
BE	14,6	13,1	14,1	9,9	11,1	8,3	8,5	9,7	9,7	8,8
BG	-	5,0	4,8	5,4	5,1	2,8	3,4	5,8	8,4	-
CZ	4,7	2,9	2,4	2,7	2,0	2,1	2,4	2,4	3,0	4,0
DK	4,4	5,7	4,4	4,9	2,2	1,4	2,2	2,5	2,8	4,4
DE	7,3	6,0	5,8	5,2	5,5	4,7	5,3	4,7	5,1	4,8
EE	-	-	-	-	-	-	-	-	-	-
IE	2,4	0,5	0,9	2,0	2,0	1,1	1,7	1,1	-	-
EL	12,7	10,9	9,8	7,8	7,3	5,1	7,1	5,1	4,9	4,1
ES	14,0	11,1	10,2	9,0	7,3	6,5	6,3	6,2	6,0	7,0
FR	4,3	3,7	3,5	3,7	4,1	3,4	3,6	3,4	4,5	4,1
HR	15,1	15,5	10,0	7,7	5,3	10,0	9,6	5,4	4,2	8,0
IT	9,1	7,8	6,0	6,4	5,7	5,6	5,4	4,8	5,0	4,5
CY	17,5	10,6	9,0	11,3	8,5	3,6	2,3	3,5	7,0	1,2
LV	-	-	-	-	-	-	-	-	-	-
LT	-	-	-	-	-	-	-	-	-	-
LU	23,4	12,6	74,4	58,8	8,0	13,7	11,4	5,6	5,5	8,9
HU	6,1	5,4	3,8	4,4	4,9	3,1	3,0	2,7	3,4	3,8
MT	-	-	-	-	-	-	-	-	-	-
NL	5,1	5,1	5,1	3,9	2,6	4,1	3,5	3,4	4,8	4,6
AT	9,0	8,6	7,3	7,1	5,5	6,0	3,7	4,3	4,8	4,0
PL	1,4	0,9	1,1	0,7	1,0	1,2	1,1	1,5	1,6	1,3
PT	12,1	9,1	8,4	10,5	7,9	5,5	4,2	4,8	5,9	3,7
RO	1,9	1,0	1,2	0,9	0,8	0,8	1,2	1,0	1,0	1,3
SI	18,5	6,5	14,9	9,3	9,8	9,8	7,8	7,3	7,3	12,1
SK	3,5	2,6	1,7	2,6	-	-	-	-	-	-
FI	2,7	1,7	2,3	0,8	2,1	2,4	1,5	1,5	1,1	1,3
SE	2,8	2,0	2,3	2,6	2,1	1,9	2,2	3,2	1,6	2,5
UK	3,1	2,6	2,1	1,9	1,7	1,4	1,6	1,5	1,7	1,5
EU	<b>6,7</b>	<b>5,5</b>	<b>5,1</b>	<b>4,7</b>	<b>4,4</b>	<b>3,9</b>	<b>4,0</b>	<b>3,7</b>	<b>4,1</b>	<b>4,0</b>
CH	6,3	3,6	4,5	3,0	2,8	8,0	2,9	1,5	2,6	2,3

Sources: CARE database (EUROSTAT for population data), data available in May 2018

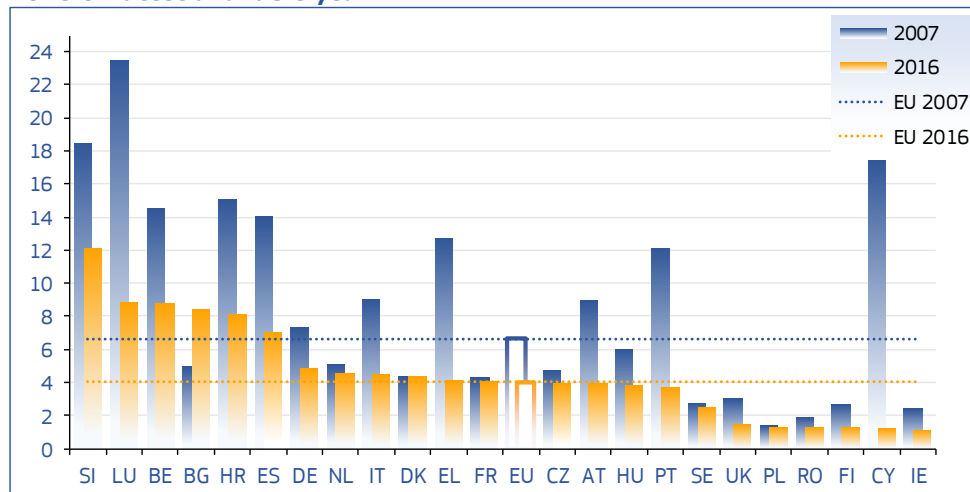
The fatality rate on motorways, in the EU, decreased by almost 40% between 2007 and 2016.

# Traffic Safety Basic Facts 2018 - Motorways

The fatality rate on motorways in the EU fell from 6,7 fatalities per million population in 2007 to 4,0 in 2016.

Figure 3 shows that the fatality rate on motorways in the EU decreased by almost 40% between 2007 and 2016, from 6,7 fatalities per million population in 2007 to 4,0 in 2016.

**Figure 3: Motorway fatality rates per million population by country, 2007 and 2016 or latest available year**



Sources: CARE database (EUROSTAT for population data), data available in May 2018

A fairer comparison of the level of safety on motorways involves the fatality rate per thousand kilometres of motorway. Using this exposure measure (motorway network length), Table 4 and Figure 4 show that the motorway fatality rate decreased by 85% in Ireland, 76% in Romania and by 75% in Portugal between 2007 and 2016. Furthermore, the average rate for the EU was reduced by 46% between 2007 (49,3) and 2016 (26,4).

# Traffic Safety Basic Facts 2018 - Motorways

The fatality rate per 1.000 km of motorways in Ireland decreased by 85% between 2007 and 2016.

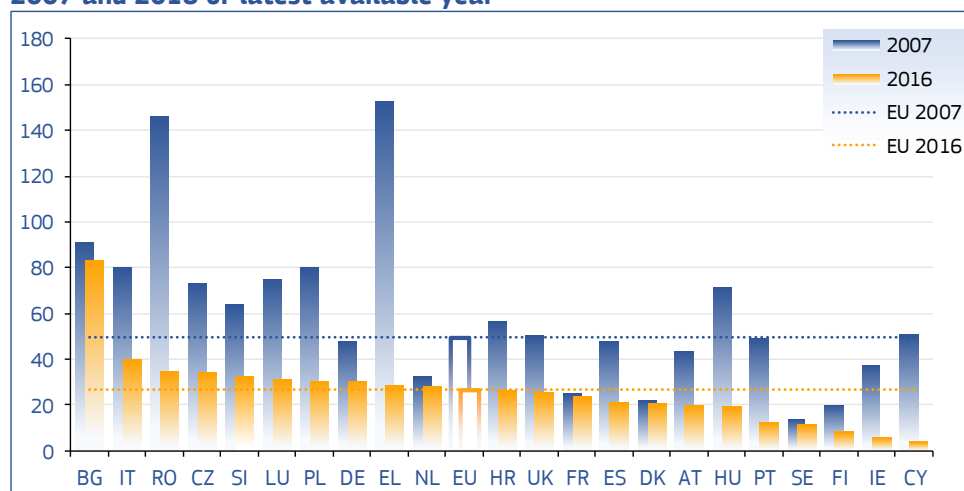
**Table 4: Motorway fatality rates per 1.000 km of motorways by country, 2007-2016**

	2007	2008	2009	2010	2011	2012	2013	2014	2015	2016
<b>BE</b>	86,8	78,8	85,1	60,1	68,1	51,6	53,3	61,3	61,3	56,2
<b>BG</b>	-	90,9	86,1	91,5	83,0	38,8	41,3	68,9	83,1	-
<b>CZ</b>	73,1	43,4	34,3	38,1	28,2	29,3	32,2	32,2	41,2	34,4
<b>DK</b>	21,6	27,5	21,2	23,9	10,5	6,7	9,9	11,4	12,9	20,2
<b>DE</b>	47,8	39,1	37,1	33,5	35,3	30,0	33,1	29,0	31,9	30,2
<b>EE</b>	-	-	-	-	-	-	-	-	-	-
<b>IE</b>	37,2	4,7	6,0	10,0	10,0	5,6	8,9	5,6	-	-
<b>EL</b>	152,8	130,9	69,3	55,8	52,0	36,6	50,7	35,9	33,4	28,3
<b>ES</b>	47,5	36,7	33,2	29,3	23,4	20,7	19,7	19,3	18,1	21,2
<b>FR</b>	24,9	21,1	20,2	20,9	23,5	19,5	20,6	19,0	25,7	23,3
<b>HR</b>	56,2	55,9	34,6	26,5	18,3	34,3	31,8	17,8	13,7	26,0
<b>IT</b>	79,8	68,2	52,5	56,4	50,7	49,1	47,5	41,9	43,9	39,5
<b>CY</b>	50,6	31,1	27,2	35,0	27,2	11,7	7,8	11,7	22,1	3,7
<b>LV</b>	-	-	-	-	-	-	-	-	-	-
<b>LT</b>	-	-	-	-	-	-	-	-	-	-
<b>LU</b>	74,8	40,8	236,8	190,8	26,3	46,1	39,5	19,7	18,6	31,1
<b>HU</b>	71,1	42,4	29,9	29,8	32,3	20,5	17,0	15,2	18,0	19,2
<b>MT</b>	-	-	-	-	-	-	-	-	-	-
<b>NL</b>	32,1	31,5	31,5	24,1	16,2	25,6	22,1	21,3	29,7	27,9
<b>AT</b>	43,6	41,9	36,0	34,3	26,8	29,1	18,0	20,9	23,9	19,8
<b>PL</b>	79,9	45,8	50,6	32,7	34,6	32,2	27,0	36,0	39,1	30,5
<b>PT</b>	48,9	35,8	32,9	40,6	30,7	19,4	14,5	16,3	19,9	12,4
<b>RO</b>	145,9	74,7	77,9	54,2	45,7	30,9	37,3	30,7	25,4	34,8
<b>SI</b>	63,9	18,7	40,2	24,7	26,0	26,0	20,8	19,5	19,4	32,3
<b>SK</b>	52,1	36,5	23,0	33,7	-	-	-	-	-	-
<b>FI</b>	20,0	12,2	15,7	5,1	13,9	16,7	9,9	9,1	6,8	7,9
<b>SE</b>	13,6	9,7	10,9	12,2	10,2	9,0	10,3	14,8	7,1	11,3
<b>UK</b>	50,4	43,6	35,9	32,1	28,8	23,8	27,2	25,5	29,5	25,5
<b>EU</b>	<b>49,3</b>	<b>39,9</b>	<b>35,9</b>	<b>33,0</b>	<b>30,3</b>	<b>26,5</b>	<b>26,5</b>	<b>25,0</b>	<b>27,2</b>	<b>26,4</b>
<b>CH</b>	34,0	19,5	24,2	16,4	15,5	44,4	16,2	8,4	14,6	13,1

Sources: CARE database (EUROSTAT, EC, IRF for road length data), data available in May 2018

The average fatality rate per thousand kilometres of motorways for EU fell by 46% between 2007 and 2016.

**Figure 4: Motorway fatality rates per 1.000 km of motorways by country, EU, 2007 and 2016 or latest available year**



Sources: CARE database (EUROSTAT, EC, IRF for road length data), data available in May 2018

Bulgaria is the country with the highest number of fatalities on motorways per thousand kilometres of motorway network in 2016. Conversely, the fatality rates in Ireland (5,6) and Finland (7,9) are clearly lower than the average rate for EU countries (26,4).

The highest percentage of fatalities on motorways in the EU in 2016 occurred in the 25-49 age group.

In the following tables and figures, the CARE data for 2016 are analysed in greater detail. It should be noted that the latest available data are used, meaning 2010 data for SK, 2014 data for IE and 2015 data for BG, EE and LT.

## Age Group

Table 5a shows the distribution of fatalities on motorways in 2016 by age group in the EU countries, while Table 5b shows the respective distribution on non-motorway road network. Of the age groups studied, the highest percentage of fatalities on motorways occurred in the 25-49 age group.

**Table 5a: Total number and distribution of fatalities on motorways by country and age group, 2016 or latest available year**

	<18	18-24	25-49	50-64	>64	Unknown	Total
BE	0%	12%	53%	18%	14%	3%	99
BG	2%	11%	48%	28%	10%	2%	61
CZ	5%	2%	48%	29%	14%	2%	42
DK	4%	8%	48%	12%	28%	0%	25
DE	5%	15%	39%	25%	17%	0%	393
EE	-	-	-	-	-	-	-
IE	0%	20%	60%	20%	0%	0%	5
EL	0%	11%	42%	18%	29%	0%	45
ES	3%	12%	42%	24%	19%	0%	327
FR	5%	15%	37%	23%	20%	0%	270
HR	6%	9%	53%	18%	15%	0%	34
IT	4%	9%	42%	26%	16%	3%	274
CY	0%	0%	0%	100%	0%	0%	1
LV	-	-	-	-	-	-	-
LT	-	-	-	-	-	-	-
LU	0%	40%	60%	0%	0%	0%	5
HU	3%	11%	51%	30%	5%	0%	37
MT	-	-	-	-	-	-	-
NL	3%	9%	42%	27%	19%	0%	77
AT	6%	18%	38%	24%	15%	0%	34
PL	0%	12%	62%	18%	8%	0%	50
PT	3%	11%	24%	39%	24%	0%	38
RO	15%	4%	19%	38%	23%	0%	26
SI	8%	8%	44%	32%	8%	0%	25
SK	0%	21%	50%	29%	0%	0%	14
FI	0%	29%	57%	14%	0%	0%	7
SE	0%	17%	42%	29%	13%	0%	24
UK	5%	13%	54%	19%	9%	0%	96
EU	4%	12%	43%	24%	16%	1%	2.009
CH	11%	5%	53%	16%	16%	0%	19

Source: CARE database, data available in May 2018



The over 64 age group is less involved in motorway fatalities (16%) than in non-motorway fatalities (28%).

Table 5b shows that in the EU countries, the highest percentage of fatalities on non-motorway roads was also in the 25-49 age group. It is noted that the over 64 age group is less involved in motorway fatalities (16%) than in non-motorway fatalities (28%).

**Table 5b: Total number and distribution of fatalities on non-motorway road network by country and age group, 2016 or latest available year**

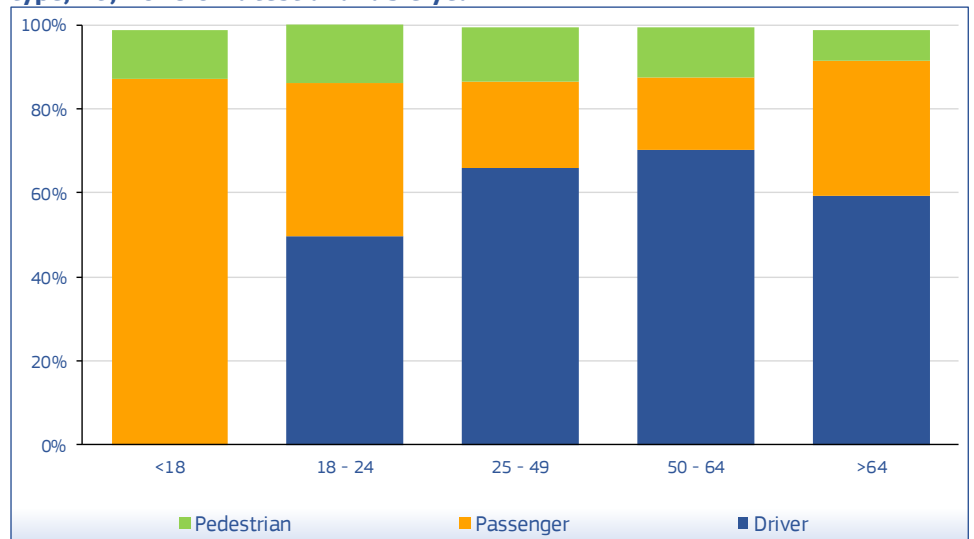
	<18	18-24	25-49	50-64	>64	Unknown	Total
BE	5%	14%	34%	19%	27%	0%	614
BG	7%	17%	40%	18%	18%	0%	865
CZ	3%	14%	37%	20%	25%	0%	702
DK	6%	15%	30%	19%	30%	0%	162
DE	5%	14%	28%	20%	34%	0%	2.099
EE	-	-	-	-	-	-	-
IE	5%	20%	39%	12%	24%	0%	180
EL	4%	12%	35%	19%	29%	1%	779
ES	3%	9%	36%	21%	31%	0%	1.483
FR	6%	17%	34%	17%	26%	0%	3.201
HR	2%	14%	29%	26%	29%	0%	273
IT	3%	11%	33%	18%	33%	1%	3.009
CY	16%	11%	27%	16%	31%	0%	45
LV	4%	11%	34%	22%	22%	6%	158
LT	-	-	-	-	-	-	-
LU	7%	4%	37%	7%	44%	0%	27
HU	3%	8%	36%	25%	28%	0%	570
MT	4%	9%	57%	9%	22%	0%	23
NL	4%	16%	23%	17%	39%	0%	414
AT	5%	13%	30%	19%	33%	0%	398
PL	5%	15%	38%	21%	21%	0%	2.413
PT	2%	10%	28%	23%	37%	0%	525
RO	6%	10%	33%	23%	27%	0%	1.887
SI	4%	18%	30%	27%	21%	0%	105
SK	5%	16%	33%	18%	13%	15%	357
FI	7%	16%	32%	18%	27%	0%	251
SE	5%	11%	29%	21%	33%	0%	221
UK	7%	15%	36%	17%	25%	0%	1.764
<b>EU</b>	<b>5%</b>	<b>13%</b>	<b>34%</b>	<b>19%</b>	<b>28%</b>	<b>0%</b>	<b>22.344</b>
CH	7%	13%	24%	23%	33%	0%	197

Source: CARE database, data available in May 2018

# Traffic Safety Basic Facts 2018 - Motorways

Figure 5a shows the distribution of fatalities on motorways by age group and road user type in the EU in 2016. Compared to the other road users, a lower but notable percentage of fatalities were pedestrians (7% - 14%, depending on age group). The percentage of driver fatalities on motorways is highest for the 50-64 age group (70%), followed by the 25-49 age group (66%). The majority of killed people aged below 18 years were passengers (87%).

**Figure 5a: Distribution of fatalities on motorways by age group and road user type, EU, 2016 or latest available year**

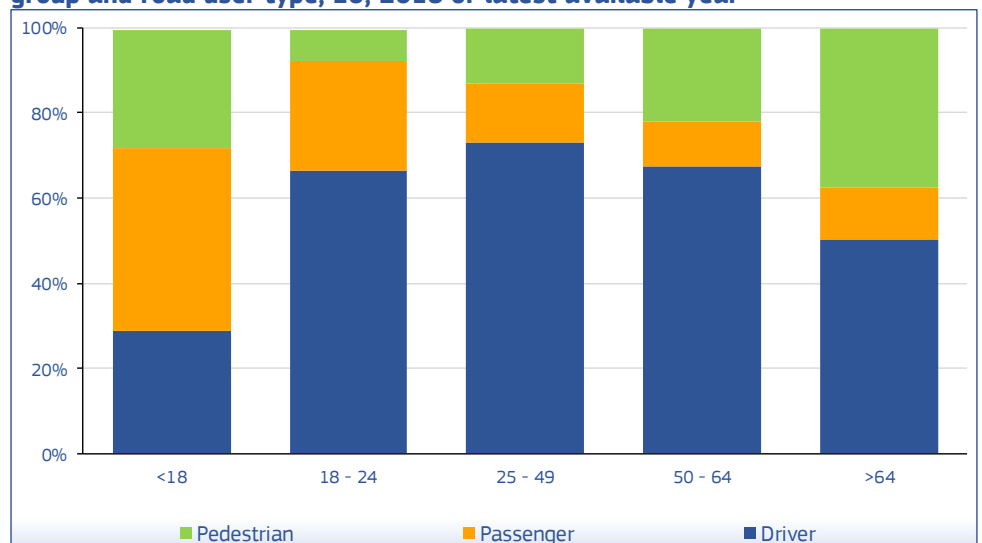


Source: CARE database, data available in May 2018

On motorways, the percentage of drivers' fatalities is highest for the 50-64 age group, whereas on the remaining road network it is highest for the 25-49 age group.

Figure 5b shows the distribution for non-motorway roads that corresponds to the motorway distribution of Figure 5a. On these roads, the percentage of drivers' fatalities is highest in the 25 - 49 age group (73%). Young road users (up to 18 years old) were mostly killed as passengers on non-motorway roads (43%). In addition, on non-motorway roads, 24% of killed people aged below 18 years and 37% of elderly fatalities (more than 64 years old) were pedestrians.

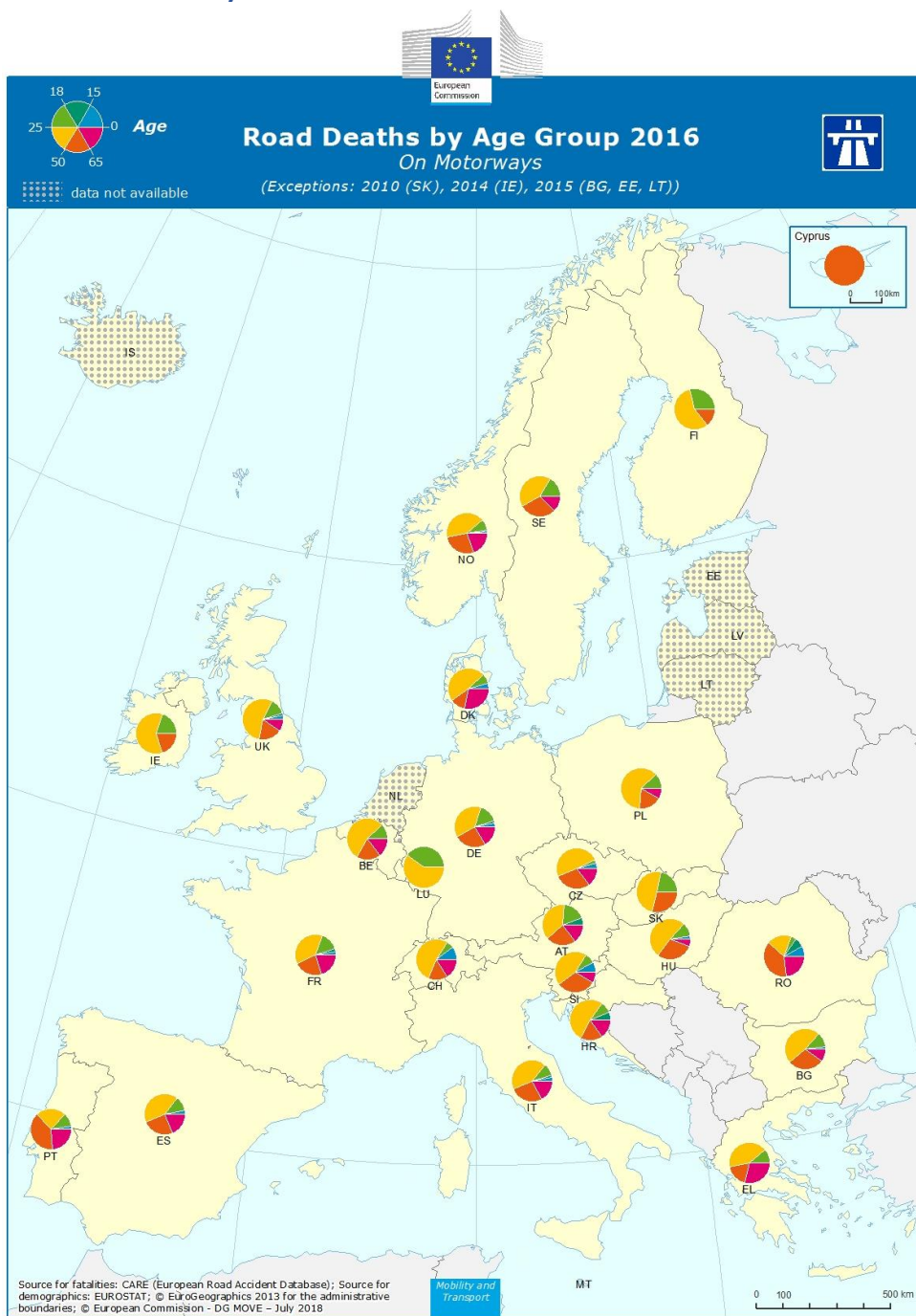
**Figure 5b: Distribution of fatalities on non-motorway road network by age group and road user type, EU, 2016 or latest available year**



Source: CARE database, data available in May 2018

# Traffic Safety Basic Facts 2018 - Motorways

**Map 1: Distribution of fatalities on motorways by country and age group, 2016 or latest available year**



## Road User Type and Transport Mode

Table 6 shows the distribution of fatalities on motorways and non-motorway road network by road user type in 2016. More passenger fatalities occurred on motorways than on non-motorways in 2016.

**Table 6: Total number and distribution of fatalities on motorways and non-motorway road network by road user type and country, EU, 2016 or latest available year**

	Motorways				Non-motorways			
	Driver	Passenger	Pedestrian	Total	Driver	Passenger	Pedestrian	Total
<b>BE</b>	79%	15%	6%	99	73%	13%	14%	528
<b>BG</b>	44%	46%	10%	61	55%	34%	11%	396
<b>CZ</b>	40%	29%	31%	42	62%	17%	21%	569
<b>DK</b>	68%	16%	16%	25	71%	12%	17%	186
<b>DE</b>	65%	27%	8%	393	71%	10%	19%	1.971
<b>EE</b>	-	-	-	-	-	-	-	-
<b>IE</b>	100%	0%	0%	5	57%	21%	22%	188
<b>EL</b>	73%	20%	7%	45	66%	15%	19%	779
<b>ES</b>	56%	29%	15%	327	62%	15%	23%	1.483
<b>FR</b>	60%	22%	18%	270	69%	15%	16%	3.201
<b>HR</b>	56%	29%	15%	34	61%	16%	23%	273
<b>IT</b>	61%	33%	6%	274	70%	12%	18%	3.009
<b>CY</b>	0%	0%	100%	1	58%	13%	29%	45
<b>LV</b>	-	-	-	-	48%	17%	35%	158
<b>LT</b>	-	-	-	-	-	-	-	-
<b>LU</b>	60%	40%	0%	5	52%	19%	30%	27
<b>HU</b>	46%	46%	8%	37	56%	18%	26%	570
<b>MT</b>	-	-	-	-	52%	13%	35%	23
<b>NL</b>	81%	0%	5%	77	83%	0%	7%	414
<b>AT</b>	65%	21%	15%	34	72%	11%	17%	398
<b>PL</b>	68%	24%	8%	50	52%	22%	27%	2.413
<b>PT</b>	50%	37%	13%	38	63%	15%	22%	525
<b>RO</b>	27%	62%	12%	26	41%	22%	38%	1.887
<b>SI</b>	56%	24%	20%	25	72%	11%	16%	105
<b>SK</b>	50%	36%	14%	14	46%	20%	35%	357
<b>FI</b>	57%	14%	29%	7	74%	15%	11%	251
<b>SE</b>	63%	25%	13%	24	66%	18%	16%	221
<b>UK</b>	60%	19%	21%	96	59%	16%	25%	1.764
<b>EU</b>	<b>61%</b>	<b>27%</b>	<b>12%</b>	<b>2.009</b>	<b>62%</b>	<b>16%</b>	<b>22%</b>	<b>21.560</b>
<b>CH</b>	53%	32%	16%	19	69%	8%	24%	197

Source: CARE database, data available in May 2018

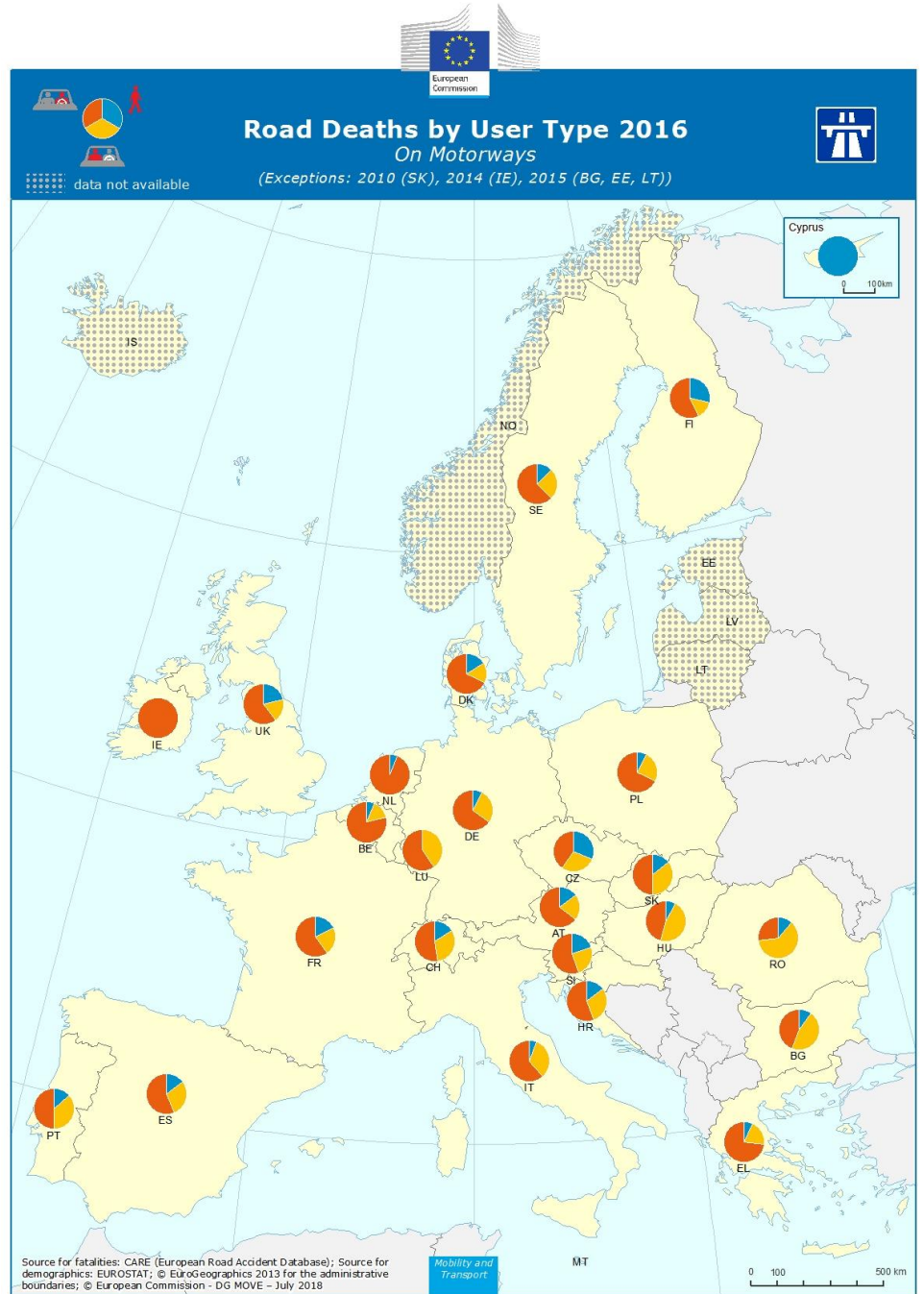
The Netherlands and Belgium had the highest percentages of driver fatalities on motorways (81% and 79% respectively), while Romania had the highest percentage of passenger fatalities on motorways (62%).

As far as pedestrian fatalities on non-motorway roads are concerned, the highest percentage of fatalities occurred in Romania (38%).

Proportionately the number of pedestrians killed on non-motorways was almost twice the respective on motorways.

# Traffic Safety Basic Facts 2018 - Motorways

**Map 2: Distribution of fatalities on motorways by country and road user type, 2016 or latest available year**



58% of fatalities on motorways across the EU countries were car or taxi occupants.

About 11% of fatalities on motorways across the EU countries were pedestrians.

Table 7 shows the number of fatalities on motorways in 2016 by mode of transport. About 58% of fatalities on motorways across the EU countries were car or taxi occupants and 11% of fatalities were users of two-wheelers.

**Table 7: Total number and distribution of fatalities on motorways by country and mode of transport, 2016 or latest available year**

	Car/Taxi	Lorries	Two-wheelers	Pedestrian	Other	Total
BE	63%	11%	4%	6%	16%	99
BG	69%	2%	5%	10%	15%	61
CZ	43%	2%	5%	31%	19%	42
DK	64%	4%	8%	16%	8%	25
DE	63%	8%	10%	8%	11%	393
EE	-	-	-	-	-	0
IE	80%	0%	20%	0%	0%	5
EL	64%	4%	22%	7%	2%	45
ES	46%	10%	21%	15%	8%	327
FR	53%	6%	14%	18%	9%	270
HR	71%	3%	6%	15%	6%	34
IT	61%	1%	11%	6%	22%	274
CY	0%	0%	0%	100%	0%	1
LV	-	-	-	-	-	0
LT	-	-	-	-	-	0
LU	60%	20%	20%	0%	0%	5
HU	59%	24%	0%	8%	8%	37
MT	-	-	-	-	-	0
NL	75%	9%	6%	5%	4%	77
AT	53%	0%	9%	15%	24%	34
PL	66%	2%	8%	8%	16%	50
PT	66%	13%	5%	13%	3%	38
RO	58%	27%	0%	12%	4%	26
SI	40%	0%	4%	20%	36%	25
SK	71%	0%	7%	14%	7%	14
FI	57%	0%	0%	29%	14%	7
SE	54%	4%	17%	13%	13%	24
UK	57%	6%	8%	21%	7%	96
<b>EU</b>	<b>58%</b>	<b>7%</b>	<b>11%</b>	<b>12%</b>	<b>12%</b>	<b>2.009</b>
CH	74%	0%	11%	16%	0%	19

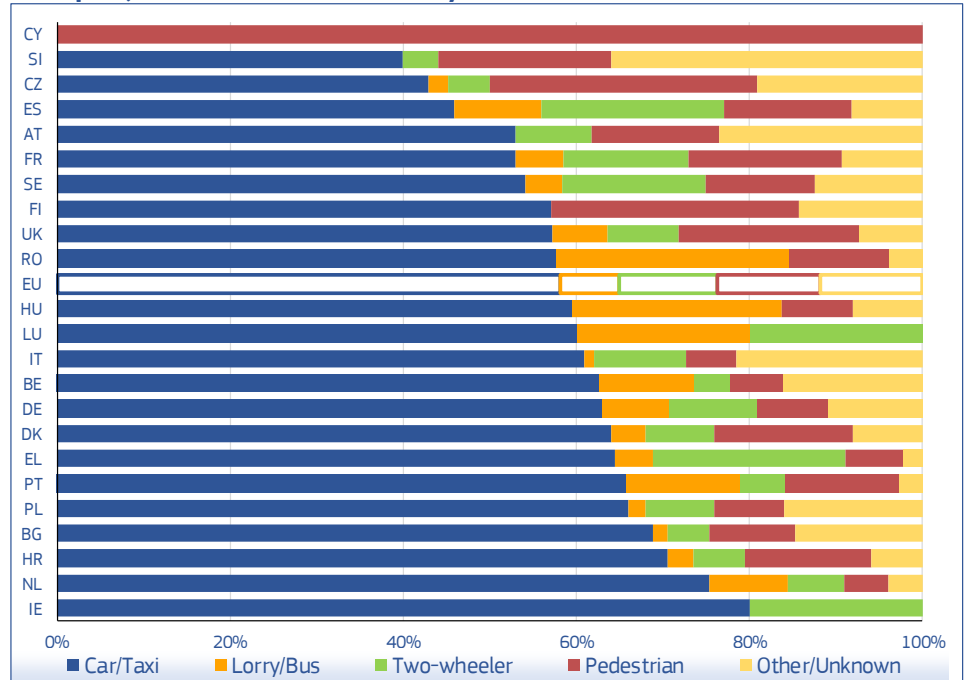
Source: CARE database, data available in May 2018

Figure 6a shows that in 2016, 31% of fatally injured on motorways in the Czech Republic were pedestrians, the highest percentage among the EU countries. Furthermore, Finland and the UK had high percentages of pedestrian fatalities on motorways (29% and 21% respectively).

# Traffic Safety Basic Facts 2018 - Motorways

More than 30% of fatalities on motorways in the Czech Republic were allotted to pedestrians, the highest percentage among the EU countries.

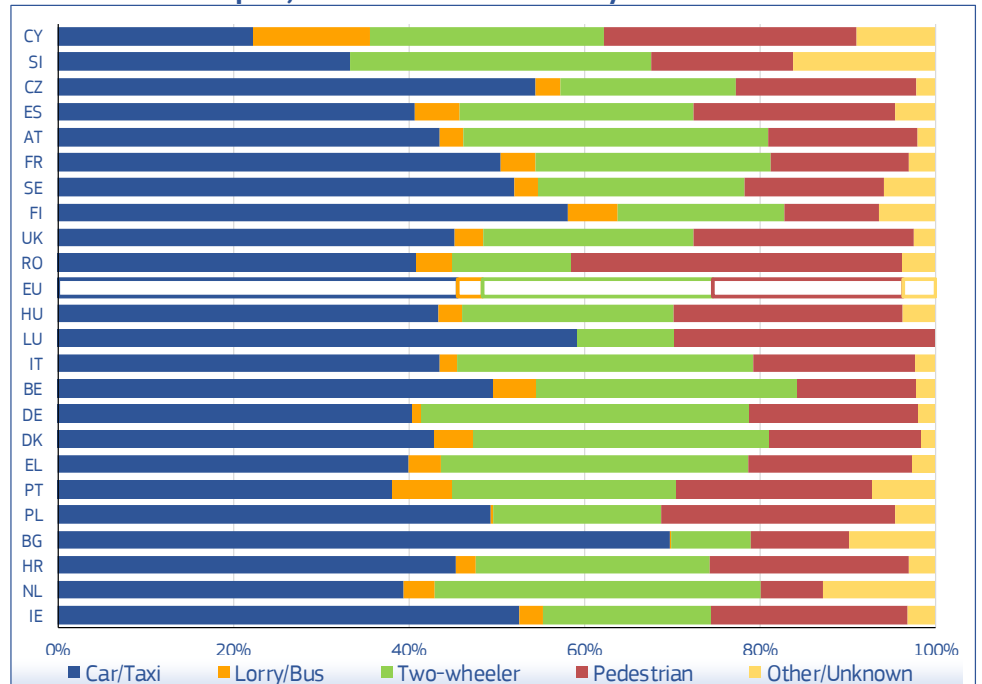
**Figure 6a: Distribution of fatalities on motorways by country and mode of transport, 2016 or latest available year**



Source: CARE database, data available in May 2018

It is worth noticing that in 2016, 11% of the fatalities occurring on motorways in the EU countries were allotted to users of two wheeled vehicles (motorcycle, moped or pedal cycle users), with Greece (22%), Spain (21%) and Ireland (20%) having the highest percentages. By comparison, Figure 6b shows that 26% of fatalities on non-motorway roads were users of two wheeled vehicles with Denmark and the Netherlands having the highest percentage (37%).

**Figure 6b: Distribution of fatalities on non-motorway road network by country and mode of transport, 2016 or latest available year**



Source: CARE database, data available in May 2018

## Manoeuvre Type

Table 8a shows that the vehicle manoeuvre most frequently associated with fatalities on motorways in the EU countries is driving 'straight ahead'. About 23% of fatally injured were occupants of vehicles, who were driving straight ahead and making no other manoeuvre. However, the corresponding percentage for this manoeuvre on non-motorway network is lower (17%), as shown in Table 8b, maybe due to the large number of "not defined" manoeuvres. More specifically, in 9 countries (Bulgaria, Czech Republic, Germany, Croatia, Italy, the Netherlands, Slovenia, Finland and Sweden) almost all manoeuvres on motorways and on non-motorways are "not defined".

**Table 8a: Total number and distribution of fatalities on motorways by country and manoeuvre type, 2016 or latest available year**

	changing lane	over taking	stopped/ stopping	straight ahead	turning	u turn	other	not defined	Total
BE	0%	10%	0%	30%	3%	0%	43%	13%	99
BG	0%	0%	0%	0%	0%	0%	0%	100%	61
CZ	0%	0%	0%	0%	0%	0%	2%	98%	42
DK	8%	0%	12%	76%	0%	0%	4%	0%	25
DE	0%	0%	0%	0%	0%	0%	0%	100%	393
EE	-	-	-	-	-	-	-	-	0
IE	0%	0%	0%	0%	0%	0%	80%	20%	5
EL	7%	0%	0%	31%	2%	0%	27%	33%	45
ES	1%	4%	7%	51%	2%	0%	27%	9%	327
FR	15%	2%	1%	41%	0%	0%	26%	16%	270
HR	0%	0%	0%	0%	0%	0%	0%	100%	34
IT	0%	0%	0%	0%	0%	0%	0%	100%	274
CY	0%	0%	0%	0%	0%	0%	100%	0%	1
LV	-	-	-	-	-	-	-	-	0
LT	-	-	-	-	-	-	-	-	0
LU	0%	0%	0%	80%	0%	0%	20%	0%	5
HU	14%	0%	3%	73%	3%	0%	8%	0%	37
MT	-	-	-	-	-	-	-	-	0
NL	0%	0%	0%	0%	0%	0%	0%	100%	77
AT	0%	0%	0%	6%	0%	0%	6%	88%	34
PL	2%	4%	0%	0%	0%	0%	84%	10%	50
PT	3%	3%	16%	61%	0%	0%	18%	0%	38
RO	0%	0%	0%	0%	0%	0%	8%	92%	26
SI	0%	0%	0%	0%	0%	0%	0%	100%	25
SK	0%	0%	0%	0%	100%	0%	0%	0%	14
FI	0%	0%	0%	0%	0%	0%	0%	100%	7
SE	0%	0%	0%	0%	0%	0%	0%	100%	24
UK	5%	1%	7%	66%	1%	0%	13%	7%	96
<b>EU</b>	<b>3%</b>	<b>2%</b>	<b>2%</b>	<b>23%</b>	<b>1%</b>	<b>0%</b>	<b>14%</b>	<b>55%</b>	<b>2.009</b>
CH	0%	0%	0%	0%	0%	0%	0%	100%	19

Source: CARE database, data available in May 2018

The vehicle manoeuvre most frequently associated with fatalities on motorways in the EU countries is driving 'straight ahead'.



About 50% of manoeuvres on motorways and non-motorways in the EU were "not defined" in 2016.

**Table 8b: Total number and distribution of fatalities on non-motorway road network by country and manoeuvre type, 2016 or latest available year**

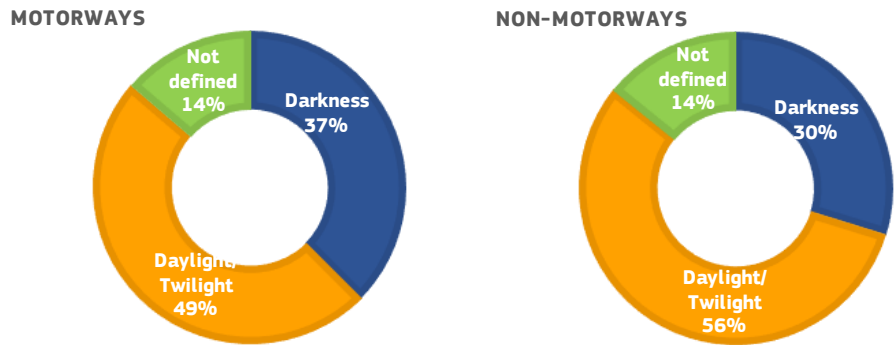
	changing lane	over taking	stopped/ stopping	straight ahead	turning	u turn	other	not defined	Total
<b>BE</b>	0%	6%	0%	27%	5%	0%	53%	9%	528
<b>BG</b>	0%	0%	0%	0%	0%	0%	0%	100%	380
<b>CZ</b>	0%	0%	0%	0%	0%	0%	14%	86%	569
<b>DK</b>	1%	0%	5%	73%	6%	0%	13%	2%	186
<b>DE</b>	0%	0%	0%	0%	0%	0%	0%	100%	1.971
<b>EE</b>	-	-	-	-	-	-	-	-	0
<b>IE</b>	1%	2%	0%	0%	2%	0%	78%	17%	188
<b>EL</b>	1%	2%	16%	2%	8%	1%	49%	22%	779
<b>ES</b>	1%	2%	1%	36%	2%	0%	43%	15%	1.483
<b>FR</b>	23%	4%	0%	41%	2%	0%	22%	7%	3.201
<b>HR</b>	0%	0%	0%	0%	0%	0%	0%	100%	273
<b>IT</b>	0%	0%	0%	0%	0%	0%	0%	100%	3.009
<b>CY</b>	2%	2%	0%	62%	4%	0%	18%	11%	45
<b>LV</b>	0%	0%	0%	0%	0%	0%	0%	100%	158
<b>LT</b>	-	-	-	-	-	-	-	-	0
<b>LU</b>	0%	0%	4%	33%	0%	0%	63%	0%	27
<b>HU</b>	2%	4%	0%	61%	5%	0%	28%	1%	570
<b>MT</b>	0%	0%	0%	0%	0%	0%	0%	100%	23
<b>NL</b>	0%	0%	0%	0%	0%	0%	0%	100%	414
<b>AT</b>	0%	5%	0%	16%	5%	1%	6%	67%	398
<b>PL</b>	2%	6%	0%	0%	1%	0%	70%	21%	2.413
<b>PT</b>	0%	2%	6%	64%	3%	1%	23%	1%	525
<b>RO</b>	0%	0%	0%	0%	0%	0%	33%	67%	1.887
<b>SI</b>	0%	0%	0%	0%	0%	0%	0%	100%	105
<b>SK</b>	0%	0%	0%	0%	0%	0%	0%	100%	357
<b>FI</b>	0%	0%	0%	0%	0%	0%	0%	100%	251
<b>SE</b>	0%	0%	0%	0%	0%	0%	0%	100%	221
<b>UK</b>	1%	6%	2%	41%	3%	0%	42%	4%	1.764
<b>EU</b>	<b>4%</b>	<b>2%</b>	<b>1%</b>	<b>17%</b>	<b>2%</b>	<b>0%</b>	<b>26%</b>	<b>48%</b>	<b>21.544</b>
<b>CH</b>	0%	0%	0%	0%	0%	0%	0%	100%	197

Source: CARE database, data available in May 2018

## Lighting Conditions

Figure 7 shows that in 2016, 49% of the fatalities on motorways in the EU countries occurred in accidents during daylight or twilight. The respective percentage for the remaining road network in the EU appears to be only slightly higher (56%). Note that the high percentage of fatalities for which the lighting condition is “not defined” means that the actual percentages are rather higher.

**Figure 7: Distribution of fatalities on motorways and non-motorway road network by lighting conditions, EU, 2016 or latest available year**



Source: CARE database, data available in May 2018

Furthermore, 37% of the fatalities on motorways occurred in darkness, whereas on non-motorway network, the respective percentage is lower, with 30%.

49% of the fatalities on motorways in the EU countries occurred in accidents during daylight or twilight.

## Day of the week

Table 9 shows that in the EU countries in 2016, there is only a slight difference between the percentage of fatalities on motorways per fatalities on the remaining road network on different days of the week.

**Table 9: Percentage of fatalities on motorways per fatalities on non-motorway road network by country and day of the week, 2016 or latest available year**

	Mon	Tue	Wed	Thu	Fri	Sat	Sun	Total
BE	28%	16%	20%	18%	18%	14%	20%	19%
BG	5%	4%	17%	24%	15%	25%	16%	15%
CZ	8%	11%	7%	4%	3%	6%	13%	7%
DK	13%	3%	16%	6%	8%	85%	5%	13%
DE	21%	29%	22%	16%	16%	17%	20%	20%
EE	-	-	-	-	-	-	-	-
IE	0%	6%	4%	6%	0%	0%	3%	3%
EL	1%	15%	7%	5%	3%	8%	3%	6%
ES	20%	15%	22%	25%	18%	21%	33%	22%
FR	10%	11%	7%	6%	8%	9%	8%	8%
HR	23%	13%	6%	5%	23%	6%	14%	12%
IT	10%	14%	6%	10%	13%	5%	8%	9%
CY	0%	0%	17%	0%	0%	0%	0%	2%
LV	0%	0%	0%	0%	0%	0%	0%	0%
LT	-	-	-	-	-	-	-	-
LU	0%	25%	0%	0%	0%	13%	-	19%
HU	8%	6%	6%	8%	2%	12%	3%	6%
MT	0%	0%	0%	0%	0%	0%	0%	0%
NL	11%	27%	24%	21%	20%	14%	16%	19%
AT	7%	12%	8%	3%	8%	12%	9%	9%
PL	3%	2%	3%	2%	2%	2%	2%	2%
PT	3%	7%	7%	11%	6%	5%	13%	7%
RO	0%	2%	1%	0%	2%	3%	1%	1%
SI	13%	6%	18%	8%	58%	25%	44%	24%
SK	4%	8%	0%	0%	8%	3%	4%	4%
FI	10%	3%	0%	0%	7%	0%	3%	3%
SE	5%	15%	11%	14%	7%	14%	11%	11%
UK	6%	7%	4%	6%	5%	6%	4%	5%
EU	9%	11%	9%	9%	9%	9%	10%	9%
CH	4%	28%	0%	0%	17%	6%	14%	10%

Source: CARE database, data available in May 2018

In the EU there is only a slight difference between the percentage of fatalities on motorways per fatalities on the remaining road network on different days of the week.

## Seasonality

Table 10a shows that in the EU countries, the peak period for fatalities on motorways is July/August (20%). However, the peak periods differ among countries.

**Table 10a: Total number and distribution of fatalities on motorways by country and month, 2016 or latest available year**

	Jan/Feb	Mar/Apr	May/Jun	Jul/Aug	Sep/Oct	Nov/Dec	Total
<b>BE</b>	19%	13%	13%	18%	17%	19%	99
<b>BG</b>	7%	10%	21%	25%	21%	16%	61
<b>CZ</b>	7%	31%	7%	17%	17%	21%	42
<b>DK</b>	24%	12%	12%	16%	24%	12%	25
<b>DE</b>	15%	14%	19%	21%	17%	15%	393
<b>EE</b>	-	-	-	-	-	-	0
<b>IE</b>	0%	20%	0%	60%	20%	0%	5
<b>EL</b>	16%	16%	33%	4%	16%	16%	45
<b>ES</b>	15%	18%	15%	22%	19%	12%	327
<b>FR</b>	11%	15%	22%	15%	17%	21%	270
<b>HR</b>	35%	3%	18%	18%	21%	6%	34
<b>IT</b>	11%	15%	17%	27%	18%	13%	274
<b>CY</b>	0%	0%	0%	0%	0%	100%	1
<b>LV</b>	-	-	-	-	-	-	0
<b>LT</b>	-	-	-	-	-	-	0
<b>LU</b>	0%	0%	60%	20%	0%	20%	5
<b>HU</b>	14%	11%	5%	27%	22%	22%	37
<b>MT</b>	-	-	-	-	-	-	0
<b>NL</b>	25%	18%	9%	13%	23%	12%	77
<b>AT</b>	15%	38%	18%	6%	15%	9%	34
<b>PL</b>	8%	12%	24%	24%	14%	18%	50
<b>PT</b>	24%	8%	16%	24%	13%	16%	38
<b>RO</b>	12%	4%	0%	27%	19%	38%	26
<b>SI</b>	32%	20%	12%	16%	8%	12%	25
<b>SK</b>	14%	14%	14%	29%	7%	21%	14
<b>FI</b>	0%	14%	0%	43%	29%	14%	7
<b>SE</b>	21%	13%	29%	4%	21%	13%	24
<b>UK</b>	22%	13%	18%	15%	11%	22%	96
<b>EU</b>	<b>15%</b>	<b>15%</b>	<b>17%</b>	<b>20%</b>	<b>17%</b>	<b>16%</b>	<b>2.009</b>
<b>CH</b>	0%	5%	21%	47%	26%	0%	19

Source: CARE database, data available in May 2018

Table 10b shows that in 2016, the average monthly percentage of fatalities on motorways per fatalities on non-motorways in the EU was almost 9%, with the highest percentage being recorded in January, March and April. It should be noted that the unknown road network fatalities are not included in the described results.

In the EU, the peak period for fatalities on motorways is July/August (22%).

**Table 10b: Percentage of fatalities on motorways per fatalities on non-motorway road network by country and month, 2016 or latest available year**

	Jan	Feb	Mar	Apr	May	Jun	Jul	Aug	Sep	Oct	Nov	Dec
<b>BE</b>	24%	18%	19%	13%	16%	13%	21%	13%	10%	27%	31%	23%
<b>BG</b>	4%	14%	3%	17%	30%	14%	23%	16%	11%	24%	21%	10%
<b>CZ</b>	6%	3%	24%	5%	7%	0%	5%	7%	5%	7%	8%	13%
<b>DK</b>	33%	25%	17%	8%	10%	8%	18%	6%	12%	19%	10%	8%
<b>DE</b>	31%	13%	28%	17%	21%	21%	24%	16%	16%	17%	16%	24%
<b>EE</b>	-	-	-	-	-	-	-	-	-	-	-	-
<b>IE</b>	0%	0%	7%	0%	0%	0%	13%	7%	0%	6%	0%	0%
<b>EL</b>	8%	4%	6%	6%	13%	10%	1%	1%	6%	4%	12%	0%
<b>ES</b>	20%	21%	33%	20%	16%	26%	19%	28%	26%	26%	17%	14%
<b>FR</b>	8%	5%	9%	9%	12%	11%	9%	4%	7%	8%	14%	8%
<b>HR</b>	35%	33%	0%	6%	13%	8%	10%	11%	7%	17%	7%	4%
<b>IT</b>	6%	7%	10%	9%	10%	8%	14%	9%	11%	7%	8%	7%
<b>CY</b>	0%	0%	0%	0%	0%	0%	0%	0%	0%	0%	0%	20%
<b>LV</b>	0%	0%	0%	0%	0%	0%	0%	0%	0%	0%	0%	0%
<b>LT</b>	-	-	-	-	-	-	-	-	-	-	-	-
<b>LU</b>	0%	0%	0%	0%	0%	300%	100%	0%	0%	0%	20%	0%
<b>HU</b>	7%	4%	8%	4%	0%	3%	13%	10%	13%	3%	2%	14%
<b>MT</b>	-	-	-	-	-	-	-	-	-	-	-	-
<b>NL</b>	33%	26%	19%	38%	9%	15%	16%	3%	18%	33%	10%	13%
<b>AT</b>	8%	16%	19%	29%	16%	3%	3%	0%	5%	9%	6%	4%
<b>PL</b>	0%	3%	1%	3%	2%	3%	4%	1%	1%	2%	1%	3%
<b>PT</b>	13%	9%	7%	0%	13%	5%	8%	10%	7%	3%	12%	2%
<b>RO</b>	0%	2%	0%	1%	0%	0%	3%	1%	1%	1%	2%	3%
<b>SI</b>	117%	25%	0%	63%	9%	22%	25%	5%	29%	0%	0%	38%
<b>SK</b>	3%	4%	11%	0%	0%	8%	11%	0%	0%	2%	2%	9%
<b>FI</b>	0%	0%	0%	6%	0%	0%	8%	4%	5%	4%	5%	0%
<b>SE</b>	0%	33%	14%	13%	18%	20%	3%	0%	13%	11%	6%	12%
<b>UK</b>	8%	7%	4%	4%	5%	7%	5%	4%	3%	4%	9%	5%
<b>EU</b>	<b>11%</b>	<b>9%</b>	<b>11%</b>	<b>9%</b>	<b>10%</b>	<b>9%</b>	<b>11%</b>	<b>8%</b>	<b>9%</b>	<b>8%</b>	<b>9%</b>	<b>8%</b>
<b>CH</b>	0%	0%	0%	8%	19%	4%	38%	16%	10%	13%	0%	0%

Source: CARE database, data available in May 2018

In 2016, the average monthly percentage of fatalities on motorways per fatalities on non-motorways in the EU was almost 9%.

## Notes

### 1. Country abbreviations

	Belgium	BE		Italy	IT		Romania	RO
	Bulgaria	BG		Cyprus	CY		Slovenia	SI
	Czech Republic	CZ		Latvia	LV		Slovakia	SK
	Denmark	DK		Lithuania	LT		Finland	FI
	Germany	DE		Luxembourg	LU		Sweden	SE
	Estonia	EE		Hungary	HU		United Kingdom	UK
	Ireland	IE		Malta	MT			
	Greece	EL		Netherlands	NL		Iceland	IS
	Spain	ES		Austria	AT		Liechtenstein	LI
	France	FR		Poland	PL		Norway	NO
	Croatia	HR		Portugal	PT		Switzerland	CH

### 2. Sources: CARE (Community database on road accidents)

The full glossary of definitions of variables used in this Report is available at:  
[http://ec.europa.eu/transport/road\\_safety/pdf/statistics/cadas\\_glossary.pdf](http://ec.europa.eu/transport/road_safety/pdf/statistics/cadas_glossary.pdf)

### 3. Data available in May 2018.

4. Data refer to 2016 and when not available the latest available data are used (2010 data for SK, 2014 data for IE and 2015 data for BG, EE and LT). Totals and related average percentages for EU also include latest available data.

5. Data for Estonia, Latvia, Lithuania and Slovakia are not included in the totals of data comparing the years 2007-2016.

6. At the commenting of the tables and figures, countries with small figures are omitted.

7. This 2018 edition of Traffic Safety Basic Facts updates the previous versions produced within the EU co-funded research projects SafetyNet and DaCoTA.

### 8. Disclaimer

This report has been produced by the National Technical University of Athens ([NTUA](#)), the Austrian Road Safety Board ([KFV](#)) and the European Union Road Federation ([ERF](#)) under a contract with the [European Commission](#). Whilst every effort has been made to ensure that the matter presented in this report is relevant, accurate and up-to-date, the Partners cannot accept any liability for any error or omission, or reliance on part or all of the content in another context.

Any information and views set out in this report are those of the author(s) and do not necessarily reflect the official opinion of the Commission. The Commission does not guarantee the accuracy of the data included in this study. Neither the Commission nor any person acting on the Commission's behalf may be held responsible for the use that may be made of the information contained therein.

### 9. Please refer to this Report as follows:

*European Commission, Traffic Safety Basic Facts on Motorways, European Commission, Directorate General for Transport, June 2018.*

