

SAFE ROADS IN THE EU

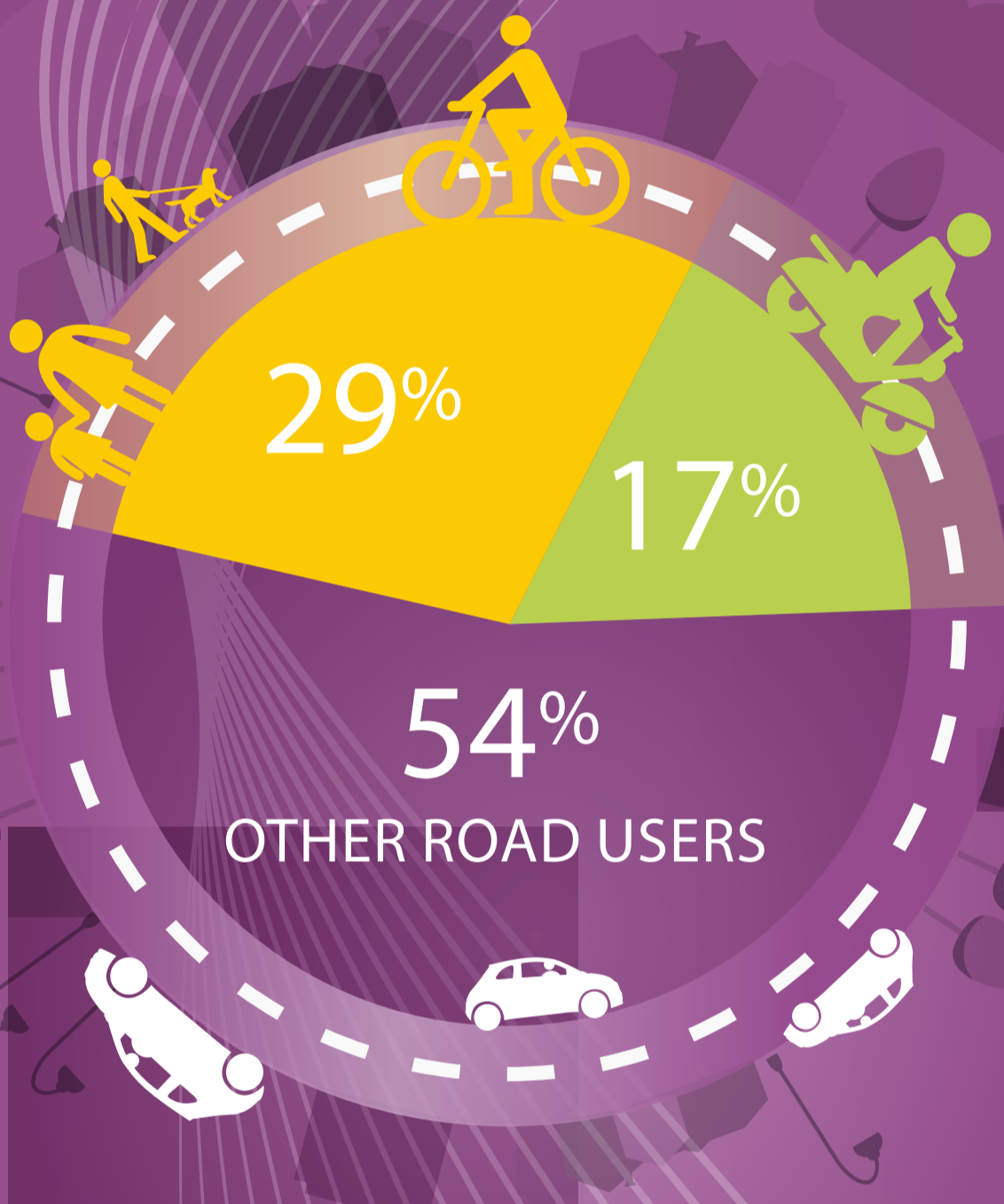
# Vulnerable Road Users

## GROUPS MOST AT RISK FOR ROAD TRAFFIC FATALITIES

### BY MEANS OF TRANSPORT

#### CYCLISTS AND PEDESTRIANS

Number of fatalities does not decrease as quickly as others over time.



#### POWERED TWO-WHEELER RIDERS

High share of fatalities when compared to the number of vehicles and vehicle-kilometres.

### BY AGE

#### YOUNG PEOPLE (18-24 YEARS)

- 8% of the total population, but 14% of fatalities.
- In 2017, two thirds of the young people killed were drivers.
- Young men have the highest risk rate.

#### ELDERLY PEOPLE

- Share of elderly road victims increasing in line with their population share.
- In 2017, 26% of those killed were 65 years or older.
- Most often injured and killed when walking or cycling inside urban areas.

