



Annual Accident Report

2015



OVERVIEW - MAJOR ISSUES



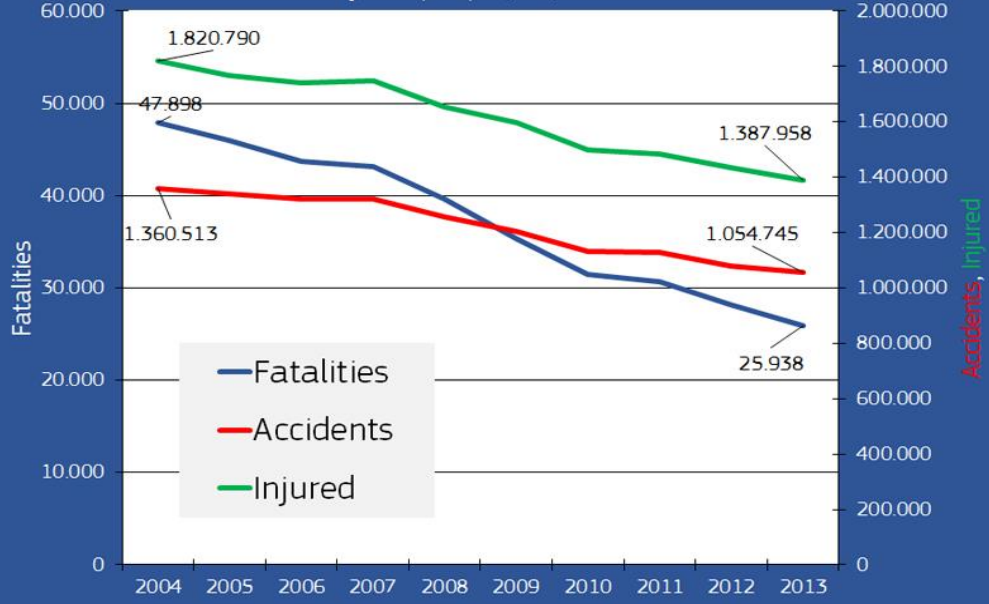
1 Million

Road Accidents per Year - **2.900 per day** (2013) with consequences:

1,4 Million Injured (3.800 per day)

26.000 Fatalities (70 per day)

Annual number of fatalities, injury accidents and injured people, EU, 2004-2013



Main progress in reducing fatalities

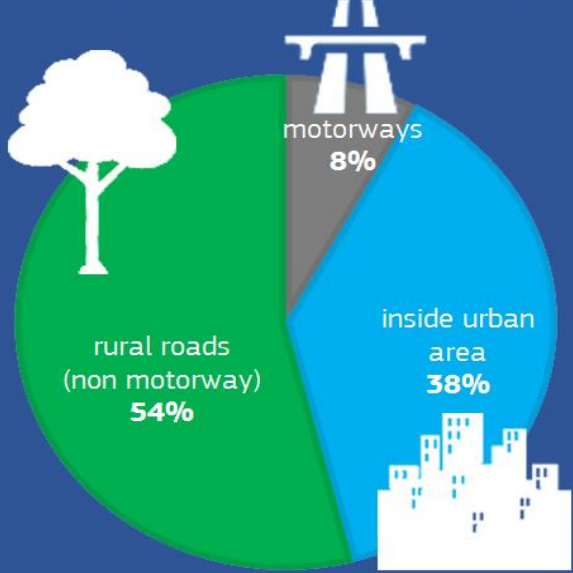
-46%



less in injury accidents

-22%

Share of fatalities by area type in EU-28, 2013

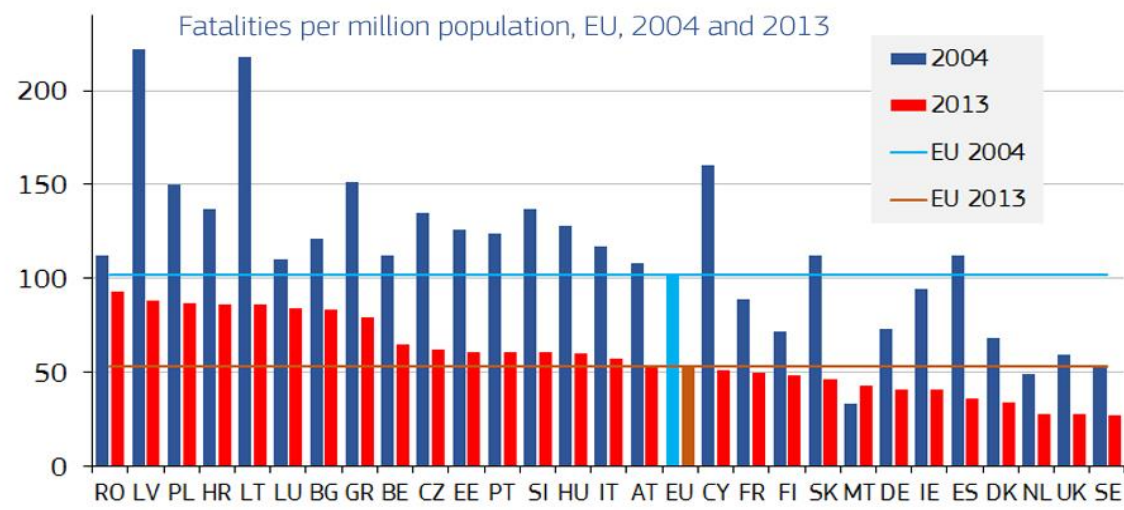


The overall **downward trend**

in the number of road fatalities is different for different road users



The most significant reduction in the overall number of fatalities between 2004 and 2013 occurred in **Latvia, Lithuania and Cyprus**

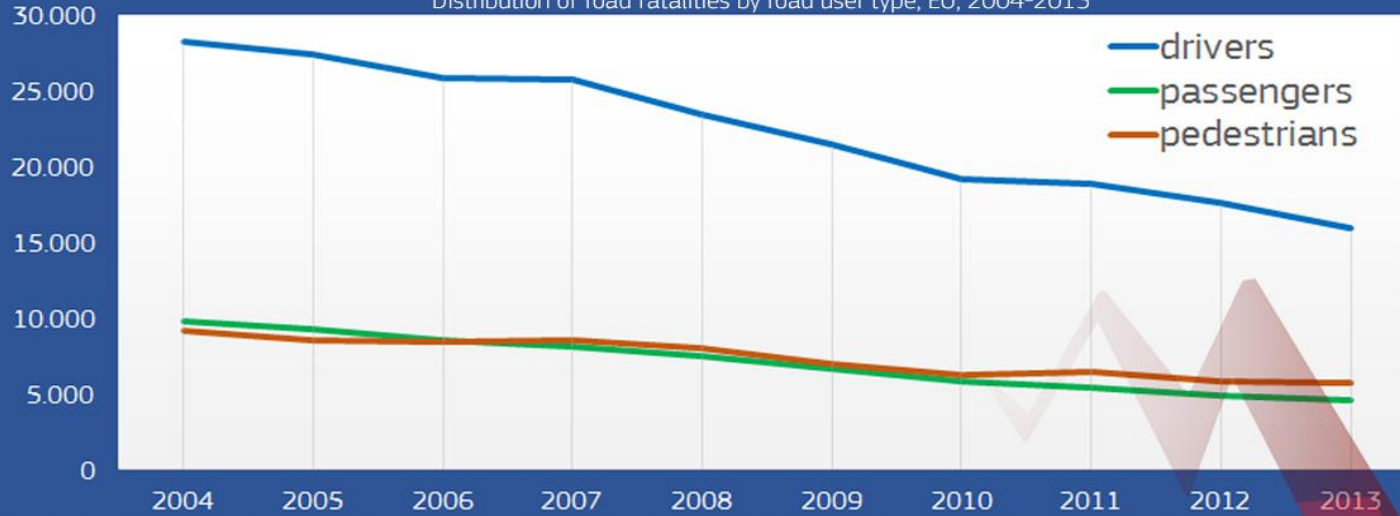


TIME SERIES – LAST 10 YEARS IN DETAIL



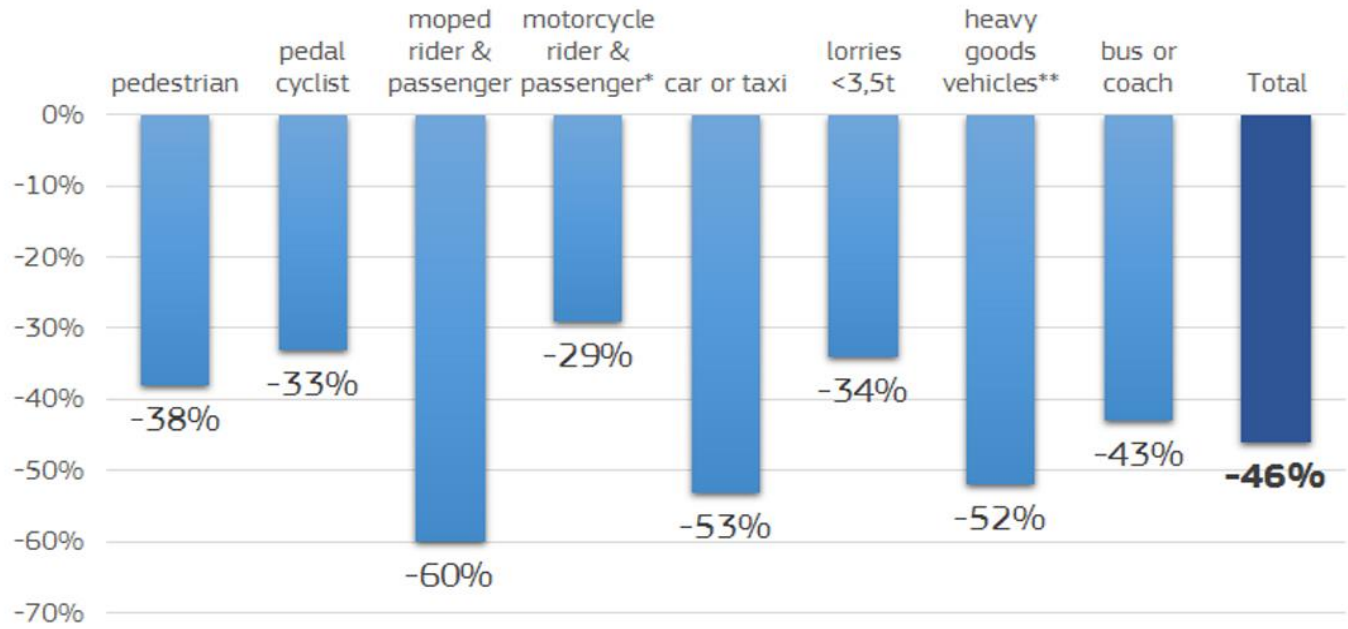
Over the last decade passenger fatalities in EU decreased by **54%**, driver fatalities by **44%** and pedestrians by **37%**

Distribution of road fatalities by road user type, EU, 2004-2013



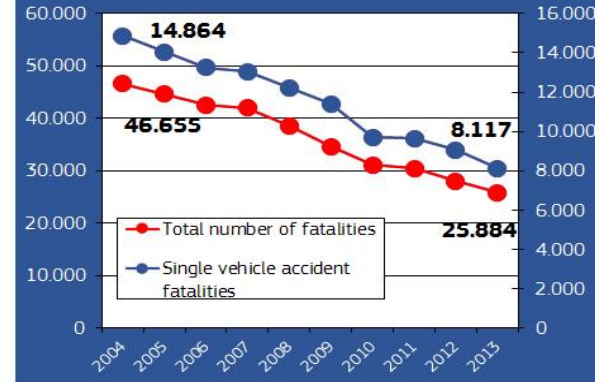
Fatalities on roads outside urban areas were **reduced by 46%** between 2004 and 2013

Percentage change in number of fatalities by mode of transport in EU-28 (2013 compared to 2004)



Over **115.000** persons - **1/3** of all traffic accident fatalities - were killed in single vehicle accidents, in EU, within the decade 2004 -2013

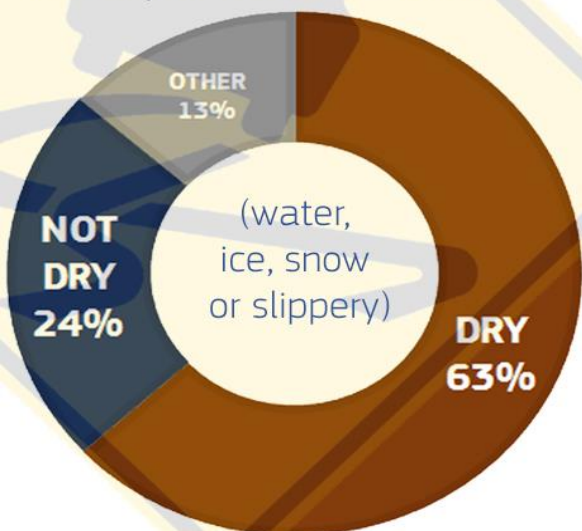
Distribution of road fatalities in the EU, 2004-2013



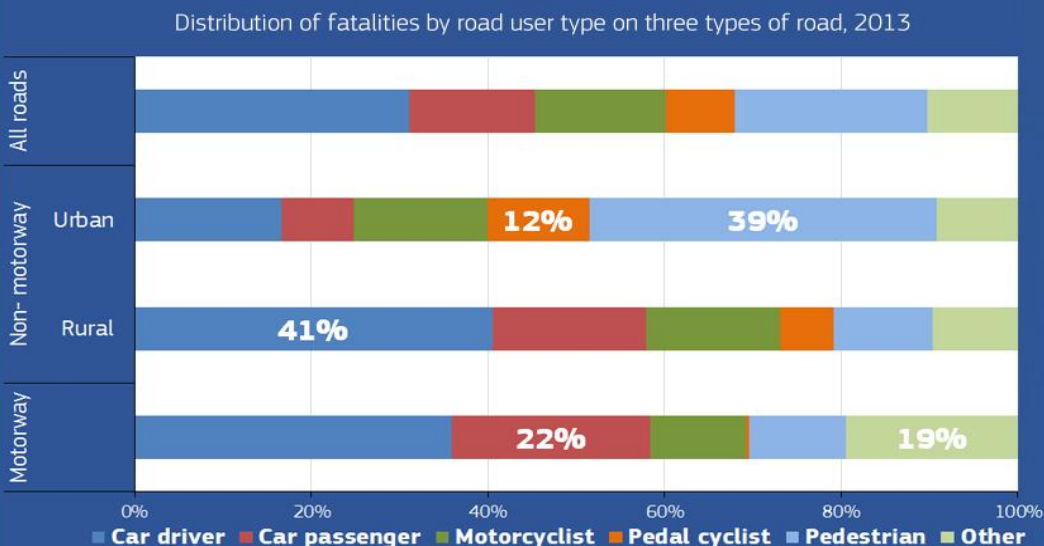
FATALITIES 2013



In 2013, in EU, **3.249** persons were killed on **ROU areas**, on non-dry road surface conditions

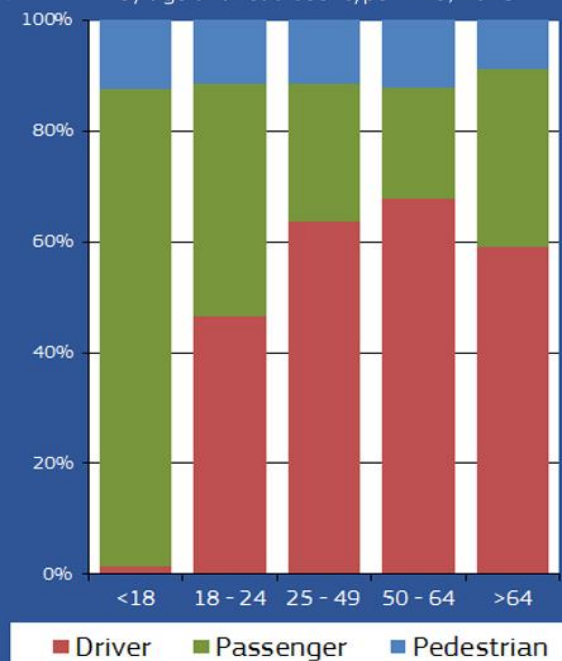


45% of all road fatalities are **car occupants**.
 On **motorways** this proportion increases to almost two thirds

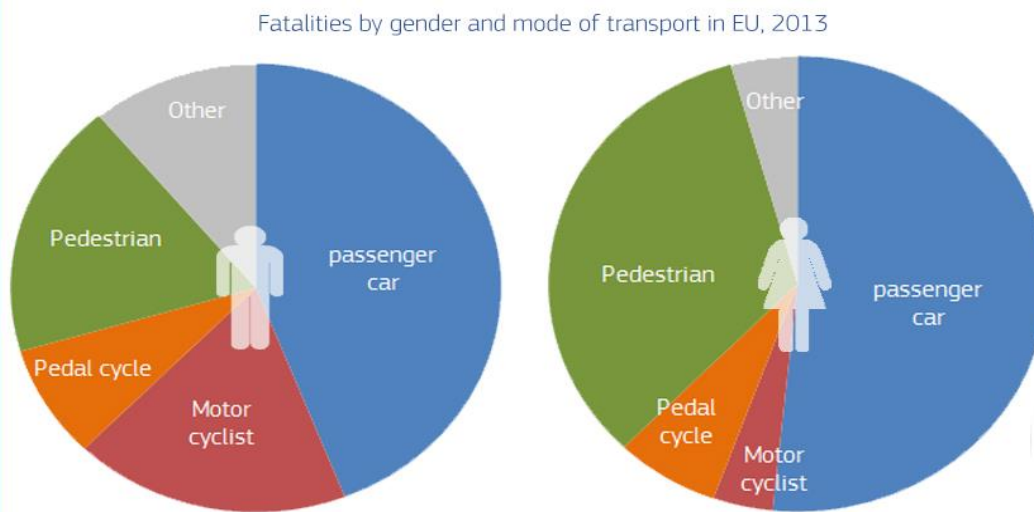


In 2013, 15-17 year olds represented almost **2,5%** of deaths in road accidents in the EU

Fatalities on motorways by age and road user type in EU, 2013



The proportion of fatalities **as passengers or pedestrians** is higher for females than for males



Powered Two Wheelers (PTW) accounted for **18%** of the total number of road accident fatalities in the in EU 2013:

Motorcycles
15%
3.862 deaths

Mopeds
3%
741 deaths